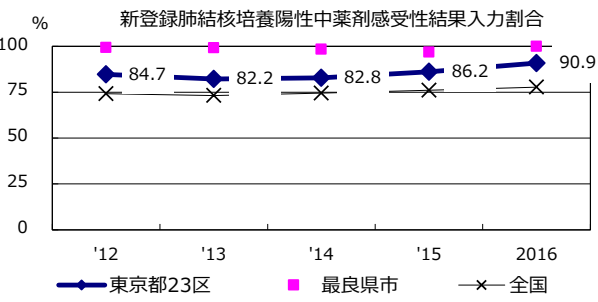
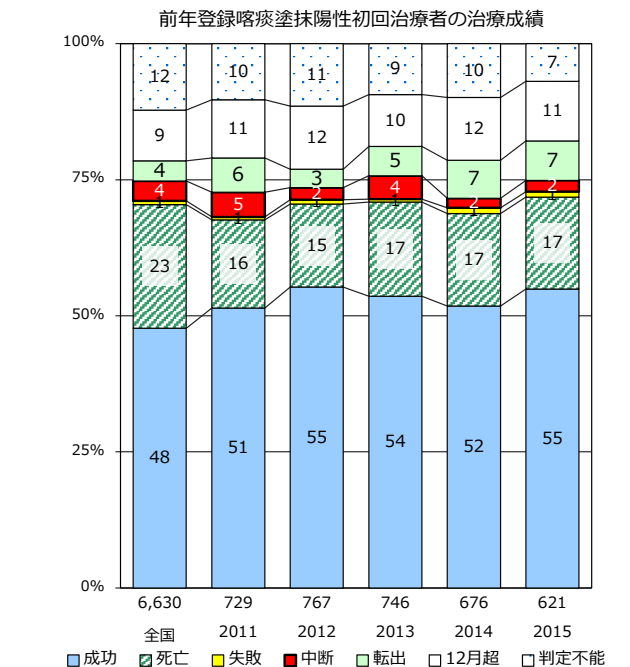
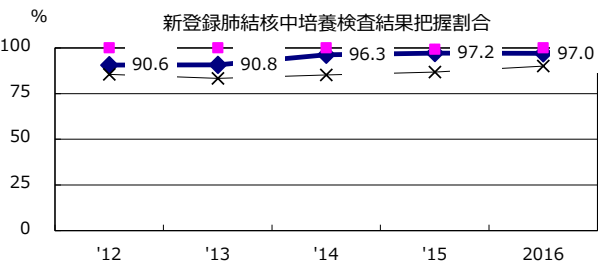
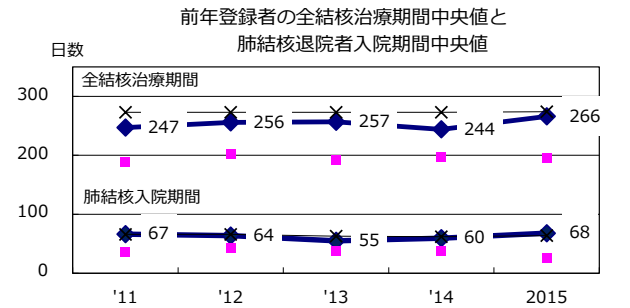
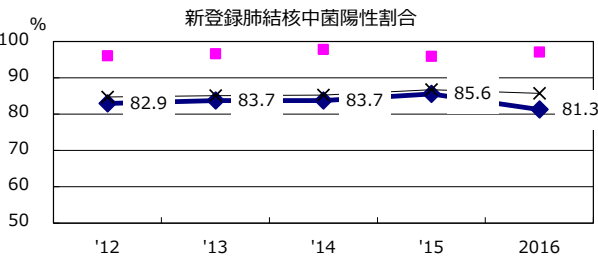
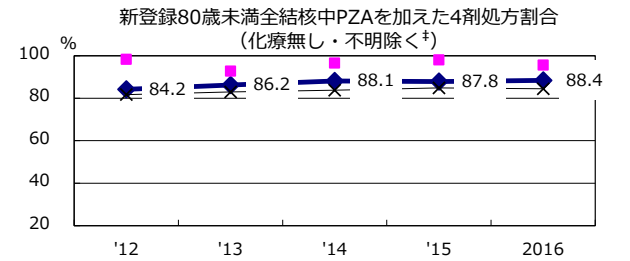
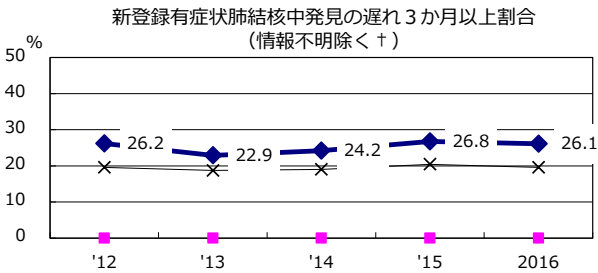
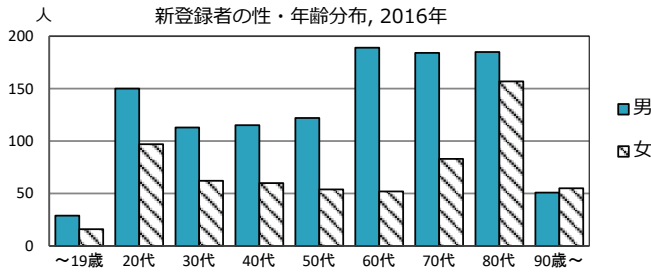
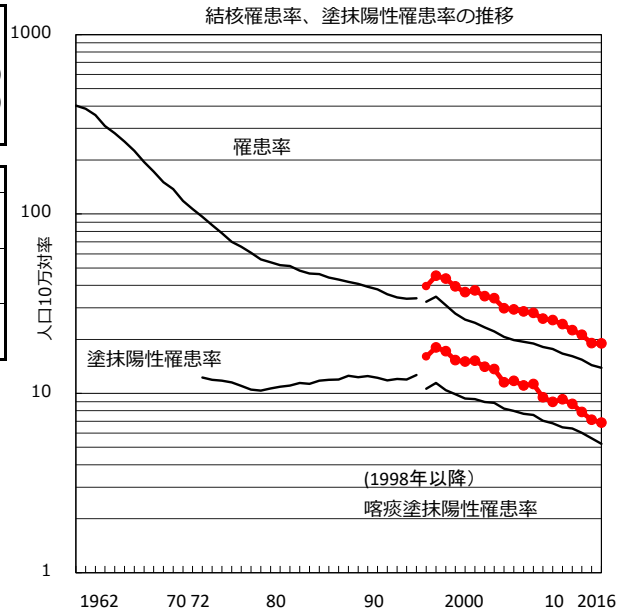


人口	9,366,124 人	(全国)
新登録中外国人	269 名	15.2% (7.6%)
新登録中ホームレス経験あり	67 名	3.8% (1.0%)
新登録30-59歳男中無職かつ生保	37 名	10.6% (7.7%)

	'12	'13	'14	'15	2016
新登録数	2,177	2,034	1,937	1,761	1,774
人口10万対率	24.3	22.5	21.2	19.1	18.9
新登録肺結核喀痰塗抹陽性数	829	791	719	658	643
人口10万対率	9.3	8.7	7.9	7.1	6.9
潜在性結核	868	666	766	674	793
人口10万対率	9.7	7.4	8.4	7.3	8.5



† 発見の遅れ情報不明(%) '12 45.1 '13 43.7 '14 51.1 '15 35.4 2016 46.3

‡ 化療無・不明(%) '12 3.9 '13 2.8 '14 3.1 '15 3.7 2016 3.0