

図1 新登録肺結核中 年齢5歳階層別症状の有無、2011年

Fig.1 Proportion of symptoms among newly notified pulmonary TB patients by 5 years age group, in 2011

Respiratory symptoms include cough, sputum expectoration, bloody sputum, and hemoptysis. Other symptoms include wheezing, chest pain, back pain, dyspnea, fever, night sweating, fatigue tendency, and weight loss.

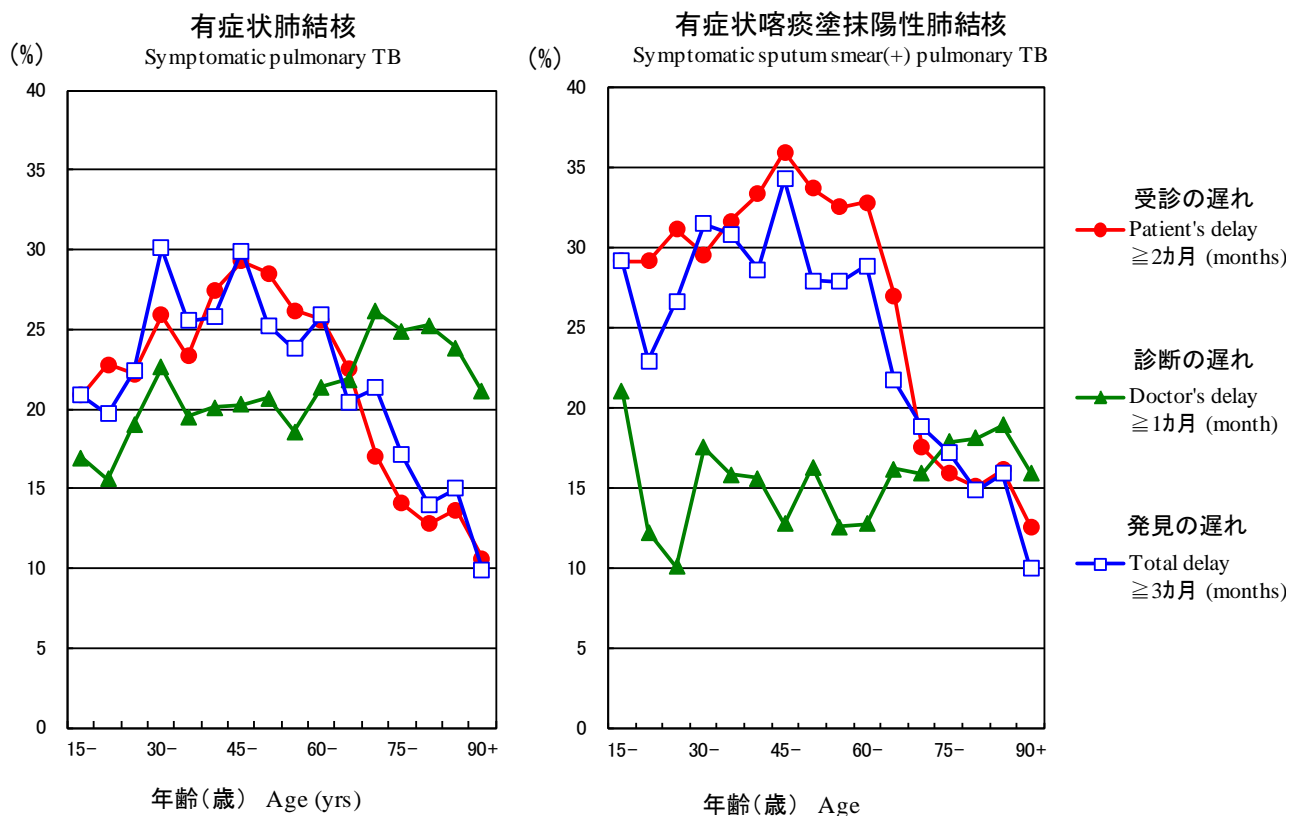


図2 新登録有症状肺結核中年齢5歳階層別発見の遅れの割合、2011年

Fig.2 Proportion of patient delay, doctor delay and total delay among symptomatic pulmonary tuberculosis patients by 5-year age group, in 2011

受診の遅れ:「発病の時期」(結核の症状が初めて自覚された時期)から「初診の時期」(結核による症状を訴えて初めて医療機関を受診した時期)までの期間が2ヵ月以上である場合。

Patient delay : The amount of time between the onset of symptoms and the initial consultation visit to a medical institution is 2 months or more.

診断の遅れ:「初診の時期」から「診断の時期」(結核と診断された時期)までの期間が1ヵ月以上である場合。

Doctor delay : The amount of time between the initial consultation visit of the patient to a medical institution and the diagnosis of tuberculosis is 1 month or more.

発見の遅れ:「発病の時期」から「診断の時期」までの期間が3ヵ月以上である場合。

Total delay : The amount of time between the onset of symptoms and the diagnosis of tuberculosis is 3 months or more.

表1 新登録結核患者の発見方法、1998～2011年

Table 1 Proportion of mode of detection among newly notified TB patients, 1998-2011

年	新登録患者	個別健診	定期健診				接触者健診		医療機関			その他	不明
			Mass screening				Contact examination		Medical institutions				
Year	Newly notified TB patients	Individual medical checkup	学校	住民	職場	施設	家族	その他	有症状受診(*1)	入院中	通院中	Others	Unknown
	<i>n</i>	%	Schools	Resident s	Employ ees	Facilities	Family	Others	Outpatients with TB symptoms(*1)	Inpatients with other diseases	Outpatients with other diseases	%	%
1998	41,033	2.6	1.0	3.8	7.6	0.4	1.5	1.2	78.3	-	-	2.7	1.0
1999	43,818	2.6	0.9	3.4	7.6	0.5	1.5	1.4	78.5	-	-	2.9	0.8
2000	39,384	2.3	1.1	3.6	8.3	0.5	1.4	1.2	78.3	-	-	2.8	0.5
2001	35,489	2.4	1.1	3.5	8.2	0.5	1.4	1.3	78.6	-	-	2.7	0.3
2002	32,828	2.1	1.1	3.2	8.0	0.6	1.4	1.5	78.7	-	-	2.9	0.5
2003	31,638	2.0	1.0	2.8	7.7	0.6	1.4	1.4	79.7	-	-	2.9	0.5
2004	29,736	2.1	1.0	2.8	7.4	0.6	1.3	1.6	79.6	-	-	2.8	0.9
2005	28,319	2.1	0.9	2.4	7.3	0.5	1.4	1.7	80.4	-	-	2.4	0.9
2006	26,384	2.1	0.9	2.3	7.6	0.6	1.3	1.2	81.2	-	-	2.5	0.5
2007	25,311	2.1	0.9	2.5	7.6	0.6	1.4	1.5	67.2	8.0	6.4	1.3	0.6
2008	24,760	2.6	0.8	2.0	7.6	0.6	1.3	1.7	62.0	10.8	8.5	1.3	1.0
2009	24,170	2.5	0.8	2.3	7.2	0.6	1.3	1.3	61.5	11.4	9.2	1.2	0.6
2010	23,261	2.2	1.0	2.3	7.0	0.6	1.3	1.5	59.8	12.0	9.9	1.4	1.0
2011	22,681	2.1	0.8	2.2	6.8	0.6	1.6	2.1	58.1	12.9	11.1	1.5	0.4

TB: tuberculosis

*1 有症状:咳・痰・血痰・喀血等の「呼吸器症状」や、喘鳴、胸痛、背部痛、息切れ、発熱、寝汗、全身倦怠、体重減少等の「その他の症状」を有する場合。

TB symptoms: Respiratory symptoms such as cough, sputum expectoration, bloody sputum, and hemoptysis; and other symptoms such as wheezing, chest pain, back pain, dyspnea, fever, night sweating, fatigue tendency, and weight loss.

旧表 新登録結核患者の発見方法、年齢階層別、2011年
Previous table Proportion of mode of detection among newly notified TB patients by age group, 2011

年齢階層 Age groups	新登録患者 Newly notified TB patients	個別健診 Individual medical checkup	定期健診 Mass screening				接触者健診 Contact examination		医療機関 Medical institutions			その他 Others	不明 Unknown
			学校 Schools	住民 Residents	職場 Employees	施設 Facilities	家族 Family	その他 Others	有症状受診 Outpatients with TB symptoms(*1)	入院中 Inpatients with other diseases	通院中 Outpatients with other diseases		
全結核 All forms of TB													
総数 Total	22,681	2.1	0.8	2.2	6.8	0.6	1.6	2.1	58.1	12.9	11.1	1.5	0.4
0-14	84	0.0	1.2	0.0	0.0	0.0	53.6	10.7	27.4	4.8	1.2	1.2	0.0
15-19	157	2.5	26.8	0.0	5.1	0.0	10.2	7.6	44.6	0.0	0.6	1.9	0.6
20-24	631	2.5	16.8	0.3	15.7	0.2	2.2	6.3	49.0	1.4	1.9	3.0	0.6
25-29	786	1.7	3.3	0.4	23.8	0.3	2.0	6.1	55.7	2.3	2.7	1.4	0.4
30-34	827	1.8	0.8	0.8	23.1	0.2	2.5	5.4	57.7	2.4	2.1	2.5	0.5
35-39	891	2.6	0.2	0.9	21.9	0.6	2.6	4.5	59.1	1.7	4.3	1.5	0.2
40-44	961	3.3	0.2	2.4	19.8	0.7	2.4	4.5	56.5	3.4	4.2	2.1	0.5
45-49	859	2.4	0.1	1.9	18.0	0.8	2.6	5.4	54.1	5.5	6.8	1.5	0.9
50-54	914	3.5	0.0	1.6	17.7	0.9	1.9	3.7	54.9	5.5	7.1	2.3	0.9
55-59	1,135	2.9	0.0	2.8	14.3	0.6	2.5	2.9	53.4	8.3	8.9	2.9	0.5
60-64	1,680	2.7	0.1	2.6	6.8	0.7	2.4	2.6	56.7	10.1	12.6	2.0	1.0
65-69	1,552	2.7	0.0	3.9	2.6	0.6	1.0	1.7	59.1	11.3	14.9	1.8	0.2
70-74	2,014	2.1	0.0	3.7	0.5	0.3	0.9	0.6	56.7	15.6	17.6	1.6	0.3
75-79	2,861	2.0	0.0	3.2	0.3	0.3	0.8	0.3	59.5	16.5	16.0	0.9	0.1
80-84	3,305	1.4	0.0	2.2	0.1	0.4	0.5	0.5	60.4	19.2	14.4	0.7	0.3
85-89	2,592	1.5	0.0	1.5	0.1	0.6	0.5	0.5	62.1	20.3	11.7	0.9	0.3
90+	1,432	0.8	0.0	0.6	0.1	1.4	0.3	1.0	62.7	23.4	8.8	0.6	0.3
(再掲) 喀痰塗抹陽性肺結核 (Re-count) Sputum smear positive pulmonary TB													
総数 Total	8,654	1.5	0.3	1.6	4.0	0.4	0.5	0.7	65.3	13.8	10.3	1.2	0.2
0-14	5	0.0	0.0	0.0	0.0	0.0	20.0	0.0	80.0	0.0	0.0	0.0	0.0
15-19	45	4.4	22.2	0.0	4.4	0.0	2.2	6.7	57.8	0.0	2.2	0.0	0.0
20-24	157	1.9	8.9	0.0	8.9	0.0	1.9	0.6	73.2	0.6	0.0	3.8	0.0
25-29	203	0.5	0.5	0.0	16.3	0.0	0.0	0.5	77.8	1.5	1.0	1.5	0.5
30-34	241	1.2	0.0	0.8	12.9	0.0	0.4	1.2	77.2	2.5	2.1	1.7	0.0
35-39	279	1.8	0.0	1.8	14.3	0.0	1.1	1.1	72.4	1.4	4.3	1.4	0.4
40-44	321	1.9	0.6	1.9	11.2	0.3	2.2	2.5	69.2	3.4	4.4	2.2	0.3
45-49	304	1.6	0.0	1.3	13.5	0.7	0.7	1.3	67.4	5.3	5.9	1.6	0.7
50-54	343	2.0	0.0	0.6	12.5	0.6	1.2	1.7	67.1	5.2	7.0	2.0	0.0
55-59	476	1.3	0.0	1.7	12.0	0.6	0.6	0.6	65.5	7.6	6.9	2.9	0.2
60-64	641	1.7	0.2	1.6	5.3	0.2	0.3	1.2	67.4	9.4	10.0	2.2	0.6
65-69	600	2.8	0.0	2.2	1.7	0.3	0.7	1.0	67.0	11.2	11.3	1.7	0.2
70-74	701	1.7	0.0	2.3	0.1	0.6	0.1	0.4	60.2	18.0	14.8	1.7	0.0
75-79	1,116	1.4	0.0	2.0	0.3	0.4	0.2	0.1	62.4	17.4	15.1	0.6	0.1
80-84	1,425	1.5	0.0	2.2	0.0	0.4	0.5	0.2	61.3	19.4	13.9	0.4	0.2
85-89	1,139	0.7	0.0	1.8	0.2	0.4	0.2	0.3	64.2	20.0	11.7	0.5	0.2
90+	658	0.8	0.0	0.5	0.0	0.9	0.2	0.8	66.3	23.1	7.0	0.3	0.3

TB: tuberculosis

*1 有症状:咳・痰・血痰・喀血等の「呼吸器症状」や、喘鳴、胸痛、背部痛、息切れ、発熱、寝汗、全身倦怠、体重減少等の「その他の症状」を有する場合。

TB symptoms: Respiratory symptoms such as cough, sputum expectoration, bloody sputum, and hemoptysis; and other symptoms such as wheezing, chest pain, back pain, dyspnea, fever, night sweating, fatigue tendency, and weight loss.

旧表 新登録結核患者数、職業・性・年齢階層別、2011年
Previous table Number of newly notified TB patients by occupation, sex and age group, 2011

性/年齢 Sex/Age group	総数 Total	接客業 Service workers	看護師 /保健 師 Nurses/P ublic health nurses	医師 Medical doctors/ dentists	他医療 従事者 Other medical workers	教員/ 保育士 Teachers/ Nursery nurses	生徒/ 学生 Pupils/St udents	他常用 勤労者 Other regular workers	他臨時 /日雇 Other temporar y/daily workers	他自営 /自由 業 Other self- employe d	家事従 事者 Housekee pers	乳幼児 Infants	無職/ 他 Unemplo yed/Othe rs	不明 Unknown
男 Male	13,994	289	33	66	82	56	255	2,646	529	770	21	20	8,916	311
0-14	35	-	-	-	-	-	14	-	-	-	-	20	1	-
15-19	76	1	-	-	1	-	56	8	4	2	-	-	4	-
20-24	330	20	1	1	3	2	128	117	22	3	-	-	28	5
25-29	410	33	3	6	9	5	41	224	33	8	-	-	38	10
30-39	891	58	9	8	23	10	13	518	62	54	2	-	113	21
40-49	1,159	54	9	6	15	10	-	612	85	91	1	-	234	42
50-59	1,447	48	7	14	20	18	1	634	120	119	2	-	430	34
60-69	2,259	53	3	8	6	7	2	427	135	210	1	-	1,325	82
70-79	3,158	18	1	6	3	3	-	87	63	183	8	-	2,721	65
80+	4,229	4	-	17	2	1	-	19	5	100	7	-	4,022	52
女 Female	8,687	264	317	15	160	65	218	787	306	149	647	21	5,561	177
0-14	49	-	-	-	-	-	28	-	-	-	-	21	-	-
15-19	81	5	-	-	1	-	65	4	3	-	-	-	3	-
20-24	301	27	19	2	8	11	91	78	20	3	8	-	28	6
25-29	376	33	54	4	19	10	24	113	23	2	36	-	48	10
30-39	827	71	97	4	39	14	8	213	66	19	121	-	153	22
40-49	661	49	75	4	48	13	1	178	63	11	85	-	121	13
50-59	602	35	57		29	15	1	111	58	17	86	-	175	18
60-69	973	29	13	1	16	1	-	73	60	40	164	-	540	36
70-79	1,717	14	1	-	-	1	-	14	10	39	105	-	1,496	37
80+	3,100	1	1	-	-	-	-	3	3	18	42	-	2,997	35

旧表 職業別、20～59歳新登録肺結核患者の発見方法別割合、2011年
Previous table Proportion of mode of detection among newly notified pulmonary TB patients aged 20-59 years by occupation, 2011

	肺結核 Pulmonary TB patients	個別健 診 Individual medical checkup	定期健診 Mass screening			接触者健診 Contact examination		医療機関 Clinics/Hospitals			その他/ 不明 Others/Un known
			住民 Residents	職場 Employe es	学校/施 設 Schools/F acilities	家族 Family	その他 Others	有症状 受診(*2) Outpatient s with TB symptoms	入院中 with other diseases	通院中 with other diseases	
総数 Total	5,772	3.0	1.7	22.5	3.0	2.7	5.5	50.5	3.4	4.7	2.9
接客業 Service workers	340	0.9	2.1	19.1	0.0	2.9	5.9	56.2	3.2	8.5	1.2
医療関係者 Medical workers(*1)	499	2.4	0.8	33.3	0.2	2.4	17.8	35.9	1.4	2.8	3.0
教員・保育士 Teachers/ Nursery nurses	90	4.4	1.1	42.2	2.2	2.2	4.4	34.4	1.1	3.3	4.4
学生 Students	267	4.1	1.9	1.1	49.1	0.7	3.7	32.2	0.0	1.5	5.6
他の常用勤労者 Other regular workers	2,348	2.6	0.6	37.9	0.2	2.2	4.6	45.1	1.6	3.6	1.7
他の臨時・日雇 Other temporary/ daily workers	465	3.0	3.0	15.3	0.9	4.1	6.2	62.2	0.6	3.4	1.3
他の自営自由 Other self-employed	271	4.4	3.3	7.0	0.0	3.0	3.0	64.6	7.4	5.5	1.8
家事 Housekeepers	247	6.9	6.1	2.8	0.0	6.9	1.6	62.8	2.0	7.7	3.2
無職 Jobless/ Others	1,110	3.0	2.8	2.3	2.6	2.8	3.9	60.9	9.6	7.4	4.7
不明 Unknown	135	5.2	0.7	8.9	2.2	3.7	0.7	53.3	5.9	5.2	14.1

*1 医療関係者：看護師・保健師・助産師、医師、その他医療職含む。

Medical workers include nurses, public health nurses, medical doctors and dentists, physical therapists, occupational therapists, medical technologists, radiographers, and co-medicals.

*2 有症状：咳・痰・血痰・咯血等の「呼吸器症状」や、喘鳴、胸痛、背部痛、息切れ、発熱、寝汗、全身倦怠、体重減少等の「その他の症状」を有する場合。
TB symptoms: Respiratory symptoms such as cough, sputum expectoration, bloody sputum, and hemoptysis; and other symptoms such as wheezing, chest pain, back pain, dyspnea, fever, night sweating, fatigue tendency, and weight loss.

【診断時病状 1】

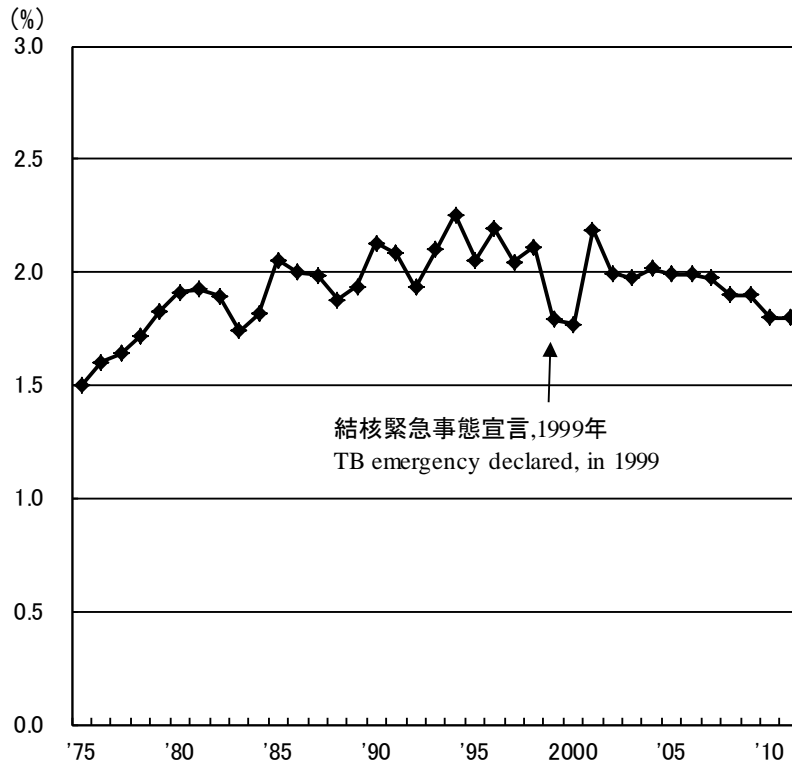
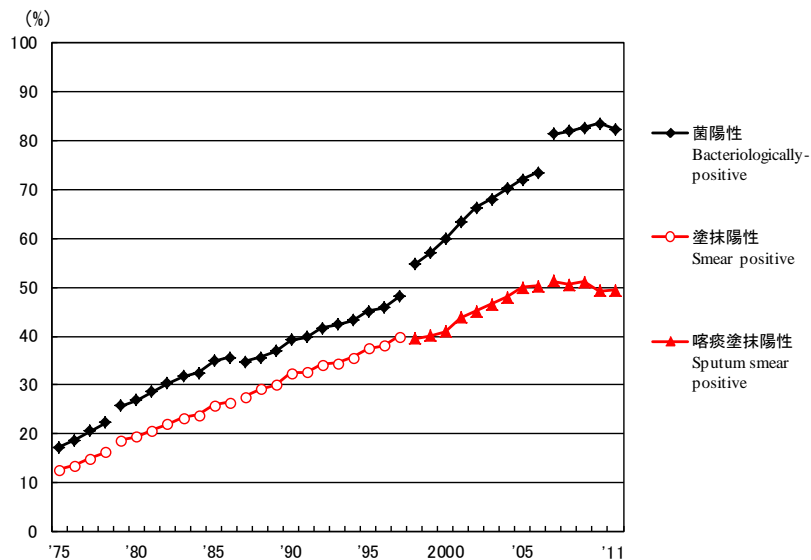


図3 新登録肺結核患者中胸部X線写真での広汎空洞型割合の推移、1975～2011年

Fig.3 Proportion of far-advanced cavitary cases among newly notified pulmonary TB patients, 1975-2011



旧図 新登録肺結核患者中菌陽性割合の推移、1975～2011年

Previous Fig.

Proportion of bacteriologically confirmed cases among newly notified pulmonary tuberculosis patients, 1975-2011

資料と対象 Sources of information and subjects:

結核登録者の定期報告 Annual tuberculosis reports from public health centers

1975-1978: 全結核 All forms of tuberculosis

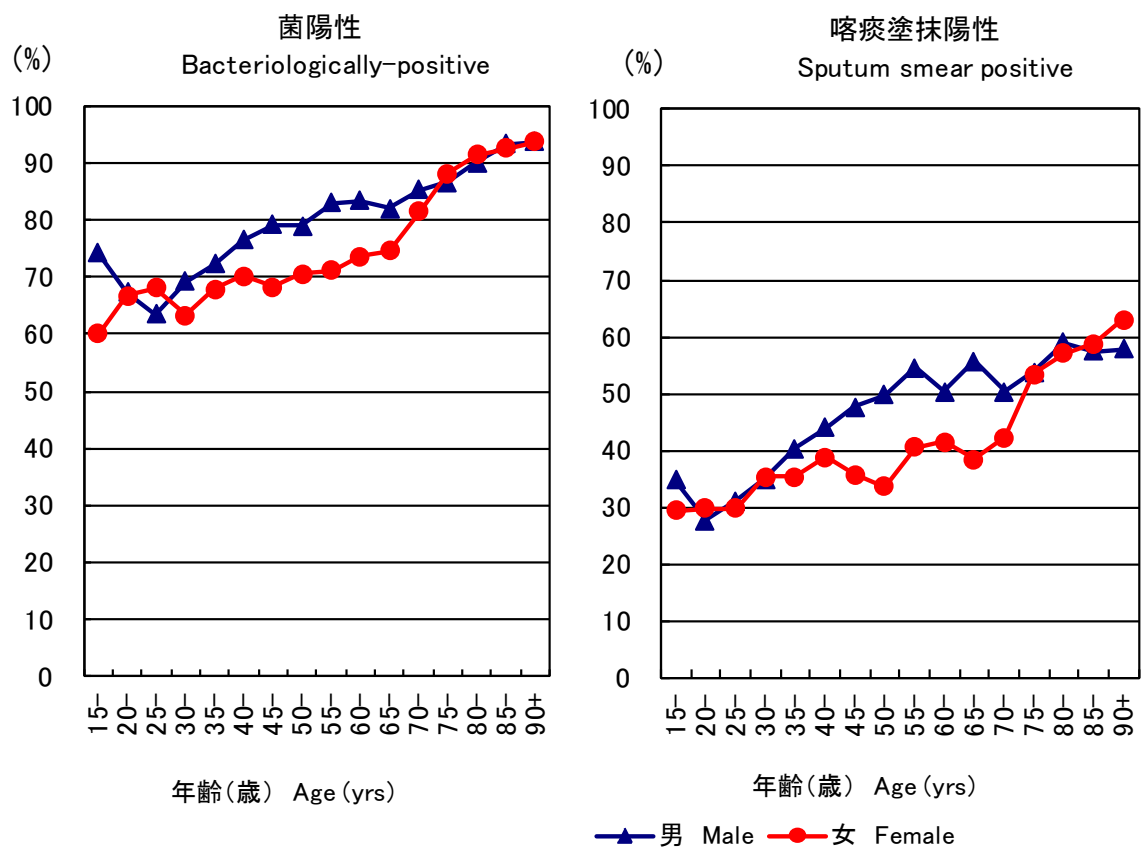
1979-1986: 肺結核 Pulmonary tuberculosis

電算化結核サーベイランスシステム Nationwide computerized tuberculosis surveillance system

1987-1997: 肺結核 Pulmonary Tuberculosis

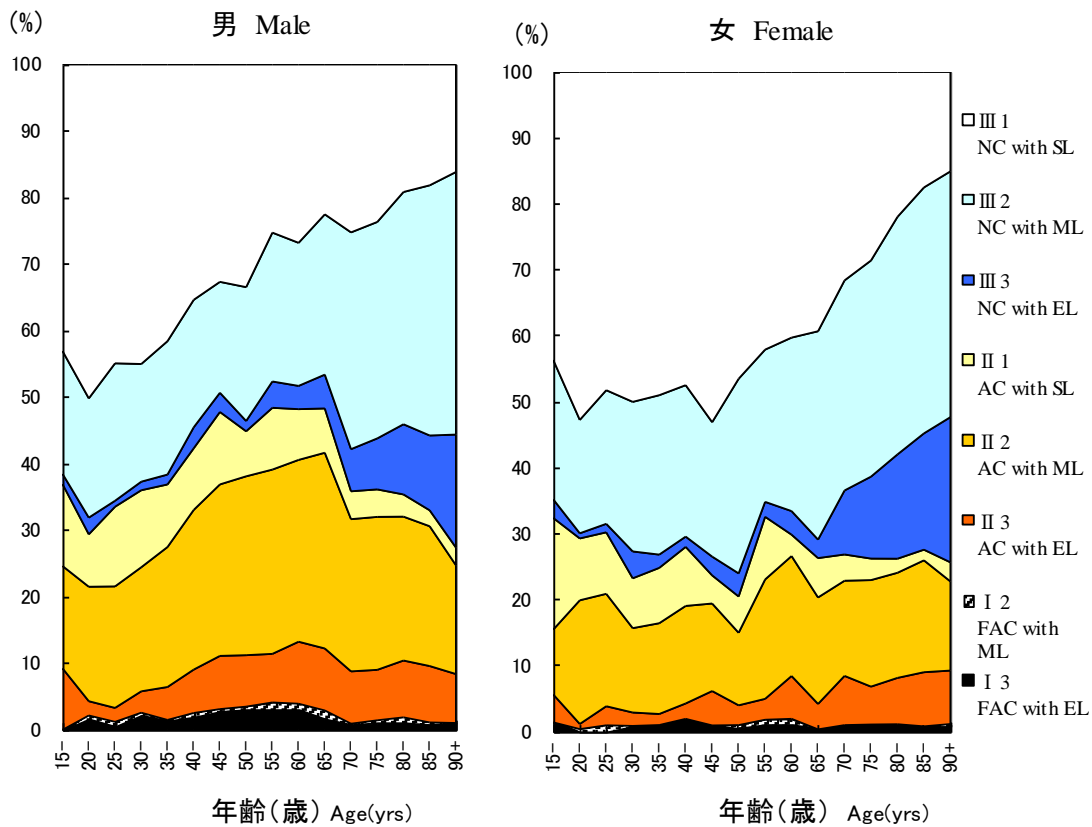
1998-2006: 肺結核(活動性分類の変更) Pulmonary tuberculosis (New patient criteria for notification were applied)

2007-2009: 肺結核(核酸増幅法項目の追加) Pulmonary tuberculosis (Item of nucleic acid amplification was added)



旧 図 新登録肺結核患者中菌陽性割合、性・年齢5歳階級別、2011年
Previous Fig.

Proportion of bacteriologically confirmed cases among newly notified pulmonary tuberculosis patients by sex and 5-year age group, 2011



旧図 新登録肺結核患者中胸部X線写真学会分類別所見割合, 性・年齢5 歳階級別, 2011 年
 Previous Fig. Proportion of cases classified by X-ray Gakkai classification by sex and 5-yearage group, 2011
 NC : Non-cavitary SL : Slight lesion AC : Advanced cavitary ML : Moderate lesion
 FAC: Far-advance cavitary EL : Extensive lesion

旧表 性・職業別、30~59歳新登録肺結核患者中有空洞あるいは／かつ喀痰塗抹陽性の割合、2011年
 Previous table Proportion of cavitary or/and sputum smear positive cases among newly notified pulmonary TB patients aged 30-59 years, 2011

	男 Male								女 Female							
	肺結核 Pulmonary TB	有空洞あるいは 喀痰塗抹陽性 Cavitary or sputum smear(+)			有空洞かつ 喀痰塗抹陽性 Cavitary and sputum smear(+)			肺結核 Pulmonary TB	有空洞あるいは 喀痰塗抹陽性 Cavitary or sputum smear(+)			有空洞かつ 喀痰塗抹陽性 Cavitary and sputum smear(+)				
		n	%	Ratio	n	%	Ratio		n	%	Ratio	n	%	Ratio		
接客業 Service workers	134	85	63.4	1.5	46	34.3	2.3	113	63	55.8	1.6	31	27.4	4.0		
医療職 Medical workers	95	41	43.2	1.0	14	14.7	1.0	294	100	34.0	1.0	20	6.8	1.0		
教員・保育士 Teachers/ Nursery nurses	32	18	56.3	1.3	3	9.4	0.6	32	15	46.9	1.4	2	6.3	0.9		
他の常用勤労者 Other regular workers	1,490	757	50.8	1.2	355	23.8	1.6	391	146	37.3	1.1	45	11.5	1.7		
他の臨時・日雇 Other temporary/ daily workers	242	179	74.0	1.7	124	51.2	3.5	145	77	53.1	1.6	25	17.2	2.5		
他の自営自由 Other self- employed	226	154	68.1	1.6	85	37.6	2.6	30	16	53.3	1.6	4	13.3	2.0		
無職 Jobless	651	430	66.1	1.5	253	38.9	2.6	341	191	56.0	1.6	85	24.9	3.7		
その他 Others	87	45	51.7	1.2	19	21.8	1.5	257	122	47.5	1.4	34	13.2	1.9		
総数 Total	2,957	1,709	57.8		899	30.4		1,603	730	45.5		246	15.3			

その他: 家事、学生、不明 Others: Houskeepers/ Students/ Unknown

Ratio: 医療職の割合に対するその他職業の割合の比 The ratio of each proportion to that of medical workers

【診断時病状 2】

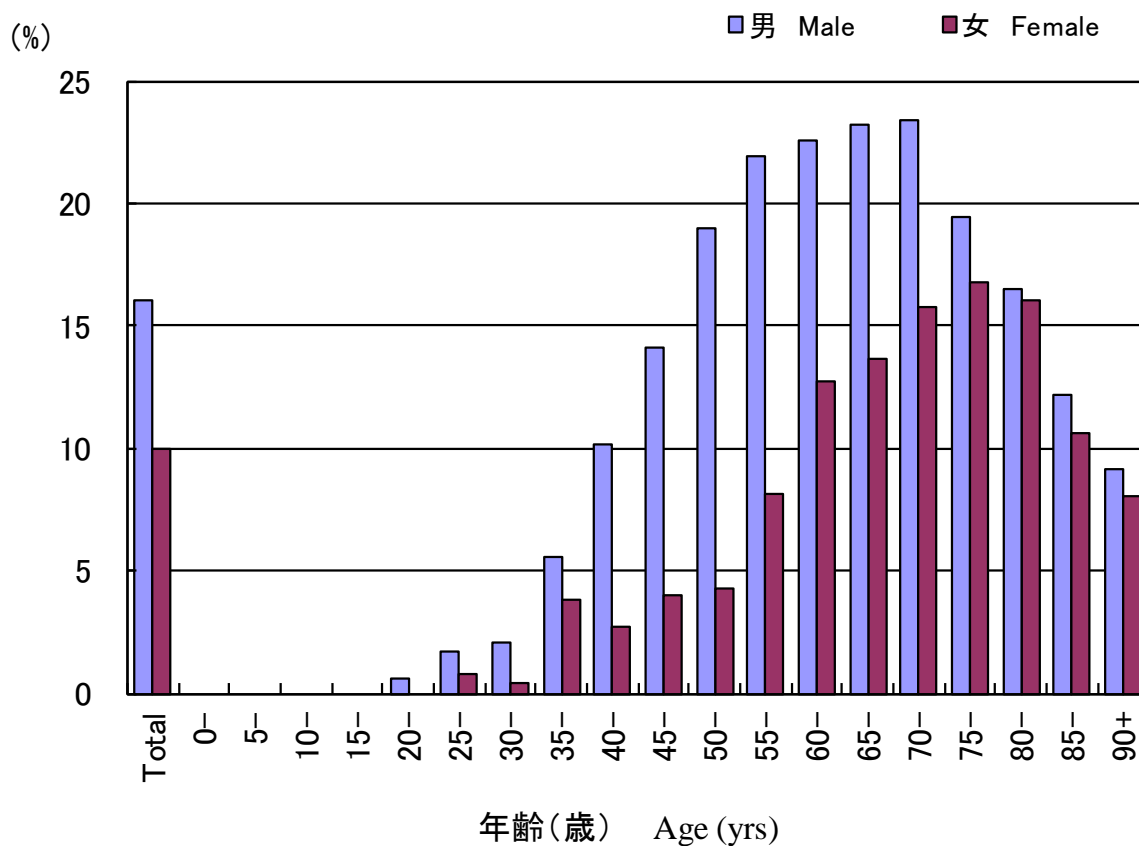


図4 新登録結核患者中「糖尿病合併あり」と報告された患者の割合、性・年齢階層別、2011年
 Fig.4 Proportion of newly notified tuberculosis patients with diabetes mellitus in each age-group by sex, 2011

表2 新登録結核患者中「HIV合併あり」と報告された患者数、性・年齢階層別、2011年および2007～2011年
Table 2 Number of newly notified tuberculosis patients with HIV infection, by sex and age group, 2011 and 2007-2011

年齢階層 Age group	喀痰塗抹陽性 Sputum smear positive		他結核菌陽性 Other bacteriologically-positive		菌陰性結核 Bacteriologically-negative		肺外結核 Extra-pulmonary		総数 Total	
	男 M	女 F	男 M	女 F	男 M	女 F	男 M	女 F	男 M	女 F
2011年 2011 Calendar year										
総計 Total	20 (3)	7 (4)	13 (2)	3 (1)	6 (1)	2 (1)	20 (3)	4 (2)	59 (9)	16 (8)
0-19	0	0	0	0	0	0	1	0	1	0
20-24	0	0	0	0	1 (1)	1 (1)	0	0	1 (1)	1 (1)
25-29	1 (1)	1	0	0	0	0	1	0	2 (1)	1
30-34	1 (1)	0	0	0	0	0	1	1 (1)	2 (1)	1 (1)
35-39	4	2 (2)	2	0	0	0	4	0	10	2 (2)
40-44	3	2 (2)	2 (1)	0	0	1	4 (2)	1 (1)	9 (3)	4 (3)
45-49	4 (1)	0	1	1 (1)	0	0	4 (1)	0	9 (2)	1 (1)
50-54	1	0	4 (1)	0	1	0	0	0	6 (1)	0
55-59	1	0	0	0	1	0	1	0	3	0
60-64	1	0	2	0	2	0	0	0	5	0
65-69	0	0	1	0	1	0	2	0	4	0
70-74	1	1	0	0	0	0	0	1	1	2
75-79	0	0	0	0	0	0	1	0	1	0
80+	3	1	1	2	0	0	1	1	5	4
2007～2011年 2007-2011 Calendar year										
総計 Total	86 (9)	16 (12)	49 (9)	7 (4)	27 (2)	4 (2)	101 (21)	14 (8)	263 (41)	41 (26)
0-19	1 (1)	0	0	0	0	0	1	0	2 (1)	0
20-24	2 (1)	0	0	0	1 (1)	1 (1)	1	1	4 (2)	2 (1)
25-29	5 (3)	3 (2)	1 (1)	1 (1)	0	0	7 (1)	0	13 (5)	4 (3)
30-34	8 (3)	4 (4)	5	2 (1)	1	1 (1)	11 (4)	3 (2)	25 (7)	10 (8)
35-39	16	3 (3)	14 (4)	1 (1)	4	0	17 (3)	2 (2)	51 (7)	6 (6)
40-44	17	3 (3)	9 (3)	0	6 (1)	2	24 (10)	4 (3)	56 (14)	9 (6)
45-49	10 (1)	0	4	1 (1)	2	0	19 (3)	0	35 (4)	1 (1)
50-54	7	0	8 (1)	0	3	0	5	0	23 (1)	0
55-59	4	0	1	0	4	0	6	1 (1)	15	1 (1)
60-64	5	1	4	0	3	0	3	0	15	1
65-69	5	0	1	0	1	0	2	0	9	0
70-74	1	1	1	0	1	0	1	1	4	2
75-79	2	0	0	0	1	0	3	1	6	1
80+	3	1	1	2	0	0	1	1	5	4

(): 外国人患者の再掲 Re-count of foreigners

HIV : Human Immunodeficiency Virus. M : male patients, F : female patients.

表3 新登録肺結核患者から分離培養された結核菌の抗結核薬剤感受性検査結果、治療歴別、2007～2011年

Table 3 Drug susceptibility test results among newly notified pulmonary tuberculosis patients, by treatment history, 2007–2011

治療歴、菌検査状況、耐性状況 Treatment history, Culture examination results, Drug susceptibility test results	2007				2008				2009				2010				2011				
	n	%	%	%	n	%	%	%	n	%	%	%	n	%	%	%	n	%	%	%	
総数 Total																					
肺結核 Pulmonary tuberculosis	19,893	100%			19,393	100%			18,912	100%			18,328	100%			17,519	100%			
培養結果把握 Culture result obtained	12,690	63.8			12,087	62.3			14,146	74.8			14,656	80.0			13,902	79.4			
培養陽性 Culture positive	9,983	50.2	100%		9,480	48.9	100%		10,902	57.6	100%		11,495	62.7	100%		10,915	62.3	100%		
感受性結果把握 DST result obtained	4,173		41.8	100%	4,332		45.7	100%	6,920		63.5	100%	8,380		72.9	100%	8,046		73.7	100%	
多剤耐性 MDR	50			1.2	48			1.1	56			0.8	68			0.8	60			0.7	
INH 耐性 Any INH resistantce	258			6.2	211			4.9	346			5.0	396			4.7	386			4.8	
RFP耐性 Any RFP resistantce	72			1.7	64			1.5	80			1.2	95			1.1	86			1.1	
1 剤以上耐性 Any resistantce	628			15.0	550			12.7	903			13.0	1,025			12.2	998			12.4	
初回治療 New treatment																					
肺結核 Pulmonary tuberculosis	18,220	100%			17,515	100%			17,125	100%			16,481	100%			15,761	100%			
培養結果把握 Culture result obtained	11,602	63.7			10,845	61.9			12,801	74.8			13,164	79.9			12,454	79.0			
培養陽性 Culture positive	9,148	50.2	100%		8,540	48.8	100%		9,899	57.8	100%		10,374	62.9	100%		9,800	62.2	100%		
感受性結果把握 DST result obtained	3,752			41.0	3,885			45.5	6,276			63.4	7,553			72.8	7,226			73.7	100%
多剤耐性 MDR	23				28			0.7	34			0.5	38			0.5	38			0.5	
INH 耐性 Any INH resistantce	194			5.2	163			4.2	276			4.4	311			4.1	297			4.1	
RFP耐性 Any RFP resistantce	36			1.0	39			1.0	50			0.8	56			0.7	57			0.8	
1 剤以上耐性 Any resistantce	516			13.8	470			12.1	780			12.4	876			11.6	858			11.9	
再治療 Re-treatment																					
肺結核 Pulmonary tuberculosis	1,409	100%			1,542	100%			1,468	100%			1,461	100%			1,351	100%			
培養結果把握 Culture result obtained	946	67.1			1,059	68.7			1,134	77.2			1,217	83.3			1,151	85.2			
培養陽性 Culture positive	713	50.6	100%		779	50.5	100%		830	56.5	100%		885	60.6	100%		863	63.9	100%		
感受性結果把握 DST result obtained	376			52.7	391			50.2	559			67.3	694			78.4	661			76.6	100%
多剤耐性 MDR	27			7.2	20			5.1	20			3.6	27			3.9	22			3.3	
INH 耐性 Any INH resistantce	63			16.8	48			12.3	65			11.6	79			11.4	80			12.1	
RFP耐性 Any RFP resistantce	36			9.6	24			6.1	28			5.0	36			5.2	28			4.2	
1 剤以上耐性 Any resistantce	107			28.5	75			19.2	112			20.0	132			19.0	122			18.5	
治療歴不明 No information about treatment history																					
肺結核 Pulmonary tuberculosis	264	100%			336	100%			319	100%			386	100%			407	100%			
培養結果把握 Culture result obtained	142	53.8			183	54.5			211	66.1			275	71.2			297	73.0			
培養陽性 Culture positive	122	46.2	100%		161	47.9	100%		173	54.2	100%		236	61.1	100%		252	61.9	100%		
感受性結果把握 DST result obtained	45			36.9	56			34.8	85			49.1	133			56.4	159			63.1	100%
多剤耐性 MDR	0			0.0	0			0.0	2			2.4	3			2.3	0			0.0	
INH 耐性 Any INH resistantce	1			2.2	0			0.0	5			5.9	6			4.5	9			5.7	
RFP耐性 Any RFP resistantce	0			0.0	1			1.8	2			2.4	3			2.3	1			0.6	
1 剤以上耐性 Any resistantce	5			11.1	5			8.9	11			12.9	17			12.8	18			11.3	

DST: Drug susceptibility test MDR: Multi-drug resistant/resistant, i.e., resistant to at least INH and RFP INH: isoniazid RFP: rifampicin

Cases having drug resistance are counted independently by drug.

旧表 新登録肺結核患者の薬剤感受性検査結果、性・年齢別、2011年および2007～2011年

Previous table Drug susceptibility test results among newly notified pulmonary tuberculosis patients, by sex and age group, 2010 and 2007-2010

年齢 Age group	総数 Total										初回治療(再掲) New treatment (Re-count)									
	男 Male					女 Female					男 Male					女 Female				
	感受性 結果把握	多剤耐性	INH耐性	RFP耐性	1剤以上耐性	感受性結果把握	多剤耐性	INH耐性	RFP耐性	1剤以上耐性	感受性結果把握	多剤耐性	INH耐性	RFP耐性	1剤以上耐性	感受性結果把握	多剤耐性	INH耐性	RFP耐性	1剤以上耐性
	DST result obtained	MDR	Any INH resistance	Any RFP resistance	Any resistance	DST result obtained	MDR	Any INH resistance	Any RFP resistance	Any resistance	DST result obtained	MDR	Any INH resistance	Any RFP resistance	Any resistance	DST result obtained	MDR	Any INH resistance	Any RFP resistance	Any resistance
2011年	2011 Calendar year																			
総数 Total	5,303	36	260	56	689	2,743	24	126	30	309	4,698	23	196	38	587	2,528	15	101	19	271
0-19	31	0	4	0	5	38	0	2	0	12	30	0	4	0	5	37	0	2	0	11
20-29	226	6	21	8	49	222	6	17	7	33	211	3	16	5	44	209	5	15	5	30
30-39	304	2	15	4	47	252	3	16	3	34	283	1	13	3	43	241	3	15	3	32
40-49	426	4	19	8	64	204	2	3	4	23	401	3	16	5	57	194	1	2	2	20
50-59	633	3	34	6	106	179	3	7	5	22	586	2	30	5	99	173	2	5	4	19
60-69	936	6	47	13	138	249	1	15	1	38	838	5	35	9	112	234	1	12	1	35
70-79	1,203	7	56	8	142	539	4	23	5	58	1,061	5	42	6	123	481	1	19	2	50
80+	1,544	8	64	9	138	1,060	5	43	5	89	1,288	4	40	5	104	959	2	31	2	74
2007～2011年	2007-2011 Calendar year																			
総数 Total	21,434	174	1,084	254	2,837	10,417	108	513	143	1,267	19,062	102	837	154	2,408	9,630	59	404	84	1,092
0-19	143	2	11	2	31	145	1	12	1	32	139	2	11	2	31	138	1	11	1	29
20-29	1,104	21	71	28	199	931	25	75	32	165	1,055	15	60	21	186	881	17	65	22	150
30-39	1,461	10	87	19	231	1,122	13	69	22	169	1,374	6	79	15	214	1,069	10	61	15	152
40-49	1,778	16	100	23	270	816	13	42	20	124	1,656	9	86	13	238	773	8	37	14	114
50-59	2,864	27	153	43	448	716	10	36	14	95	2,634	16	129	27	401	673	3	25	7	82
60-69	4,015	30	224	51	604	1,013	10	59	11	149	3,599	20	182	30	515	941	4	41	4	123
70-79	4,745	43	233	56	596	2,036	19	90	22	230	4,088	22	154	28	469	1,838	7	65	10	190
80+	5,324	25	205	32	458	3,638	17	130	21	303	4,517	12	136	18	354	3,317	9	99	11	252
2007～2011年	2007-2011 Calendar year																			
総数 Total	100%	0.8	5.1	1.2	13.2	100%	1.0	4.9	1.4	12.2	100%	0.5	4.4	0.8	12.6	100%	0.6	4.2	0.9	11.3
0-19	100	1.4	7.7	1.4	21.7	100	0.7	8.3	0.7	22.1	100	1.4	7.9	1.4	22.3	100	0.7	8.0	0.7	21.0
20-29	100	1.9	6.4	2.5	18.0	100	2.7	8.1	3.4	17.7	100	1.4	5.7	2.0	17.6	100	1.9	7.4	2.5	17.0
30-39	100	0.7	6.0	1.3	15.8	100	1.2	6.1	2.0	15.1	100	0.4	5.7	1.1	15.6	100	0.9	5.7	1.4	14.2
40-49	100	0.9	5.6	1.3	15.2	100	1.6	5.1	2.5	15.2	100	0.5	5.2	0.8	14.4	100	1.0	4.8	1.8	14.7
50-59	100	0.9	5.3	1.5	15.6	100	1.4	5.0	2.0	13.3	100	0.6	4.9	1.0	15.2	100	0.4	3.7	1.0	12.2
60-69	100	0.7	5.6	1.3	15.0	100	1.0	5.8	1.1	14.7	100	0.6	5.1	0.8	14.3	100	0.4	4.4	0.4	13.1
70-79	100	0.9	4.9	1.2	12.6	100	0.9	4.4	1.1	11.3	100	0.5	3.8	0.7	11.5	100	0.4	3.5	0.5	10.3
80+	100	0.5	3.9	0.6	8.6	100	0.5	3.6	0.6	8.3	100	0.3	3.0	0.4	7.8	100	0.3	3.0	0.3	7.6

DST: Drug susceptibility test. MDR: Multi-drug resistance, i.e., resistant to at least INH and RFP. INH: Isoniazid. RFP: Rifampicin.

旧表 新登録肺結核患者の薬剤感受性検査結果および耐性率、性・年齢別、2007～2011年（再掲；外国人）

Previous table Drug susceptibility test results among newly notified pulmonary tuberculosis patients, by sex and age group, 2007-2011 (Re-count of foreigners)

年齢 Age group	総数 Total					初回治療(再掲) New treatment (Re-count)														
	男 Male		女 Female			男 Male		女 Female												
	感受性結果把握 DST result obtained	多剤耐性 MDR	INH耐性 Any resistance	RFP耐性 Any resistance	1剤以上耐性 Any resistance	感受性結果把握 DST result obtained	多剤耐性 MDR	INH耐性 Any resistance	RFP耐性 Any resistance	1剤以上耐性 Any resistance	感受性結果把握 DST result obtained	多剤耐性 MDR	INH耐性 Any resistance	RFP耐性 Any resistance	1剤以上耐性 Any resistance					
2007～2011年	2007-2011 Calendar year					2007-2011 Calendar year					2007-2011 Calendar year									
総数 Total	492	18	41	22	90	585	33	76	42	133	461	11	28	15	78	546	24	64	30	115
0-19	19	1	4	1	8	18	1	2	1	2	19	1	4	1	8	17	1	1	1	1
20-29	211	14	22	18	42	263	22	43	27	73	201	9	14	13	37	250	16	36	20	65
30-39	101	2	6	2	13	158	6	18	8	29	97	1	5	1	11	146	4	16	5	26
40-49	56	1	5	1	13	82	1	7	3	18	51	0	3	0	10	76	1	7	2	16
50-59	36	0	0	0	3	24	0	2	0	3	33	0	0	0	3	21	0	1	0	1
60-69	26	0	1	0	7	16	1	2	1	3	22	0	0	0	6	16	1	2	1	3
70-79	23	0	1	0	2	12	2	2	2	3	21	0	1	0	2	9	1	1	1	1
80+	20	0	2	0	2	12	0	0	0	2	17	0	1	0	1	11	0	0	0	2
2007～2011年	2007-2011 Calendar year					2007-2011 Calendar year					2007-2011 Calendar year									
総数 Total	100%	3.7	8.3	4.5	18.3	100%	5.6	13.0	7.2	22.7	100%	2.4	6.1	3.3	16.9	100%	4.4	11.7	5.5	21.1
0-19	100	5.3	21.1	5.3	42.1	100	5.6	11.1	5.6	11.1	100	5.3	21.1	5.3	42.1	100	5.9	5.9	5.9	5.9
20-29	100	6.6	10.4	8.5	19.9	100	8.4	16.3	10.3	27.8	100	4.5	7.0	6.5	18.4	100	6.4	14.4	8.0	26.0
30-39	100	2.0	5.9	2.0	12.9	100	3.8	11.4	5.1	18.4	100	1.0	5.2	1.0	11.3	100	2.7	11.0	3.4	17.8
40-49	100	1.8	8.9	1.8	23.2	100	1.2	8.5	3.7	22.0	100	0.0	5.9	0.0	19.6	100	1.3	9.2	2.6	21.1
50-59	100	0.0	0.0	0.0	8.3	100	0.0	8.3	0.0	12.5	100	0.0	0.0	0.0	9.1	100	0.0	4.8	0.0	4.8
60-69	100	0.0	3.8	0.0	26.9	100	6.3	12.5	6.3	18.8	100	0.0	0.0	0.0	27.3	100	6.3	12.5	6.3	18.8
70-79	100	0.0	4.3	0.0	8.7	100	16.7	16.7	16.7	25.0	100	0.0	4.8	0.0	9.5	100	11.1	11.1	11.1	11.1
80+	100	0.0	10.0	0.0	10.0	100	0.0	0.0	0.0	16.7	100	0.0	5.9	0.0	5.9	100	0.0	0.0	0.0	18.2

DST: Drug susceptibility test. MDR: Multi-drug resistance, i.e., resistant to at least INH and RFP. INH: Isoniazid. RFP: Rifampicin.