

【患者発見】

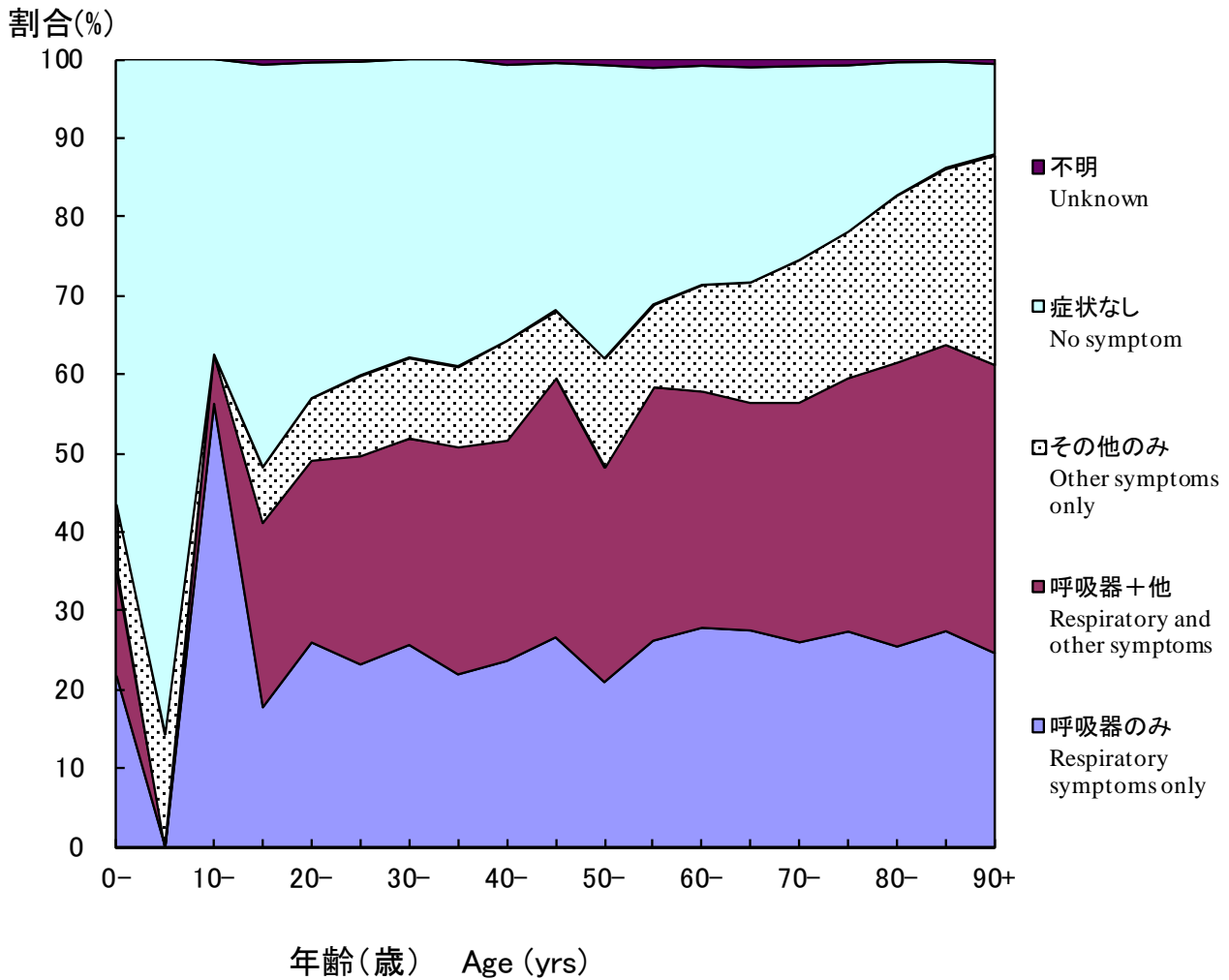


図1 新登録肺結核中 年齢5歳階層別症状の有無、2012年

Fig.1 Proportion of symptoms among newly notified pulmonary tuberculosis patients by 5 years age group, in 2012

Respiratory symptoms include cough, sputum expectoration, bloody sputum, and hemoptysis. Other symptoms include wheezing, chest pain, back pain, dyspnea, fever, night sweating, fatigue tendency, and weight loss.

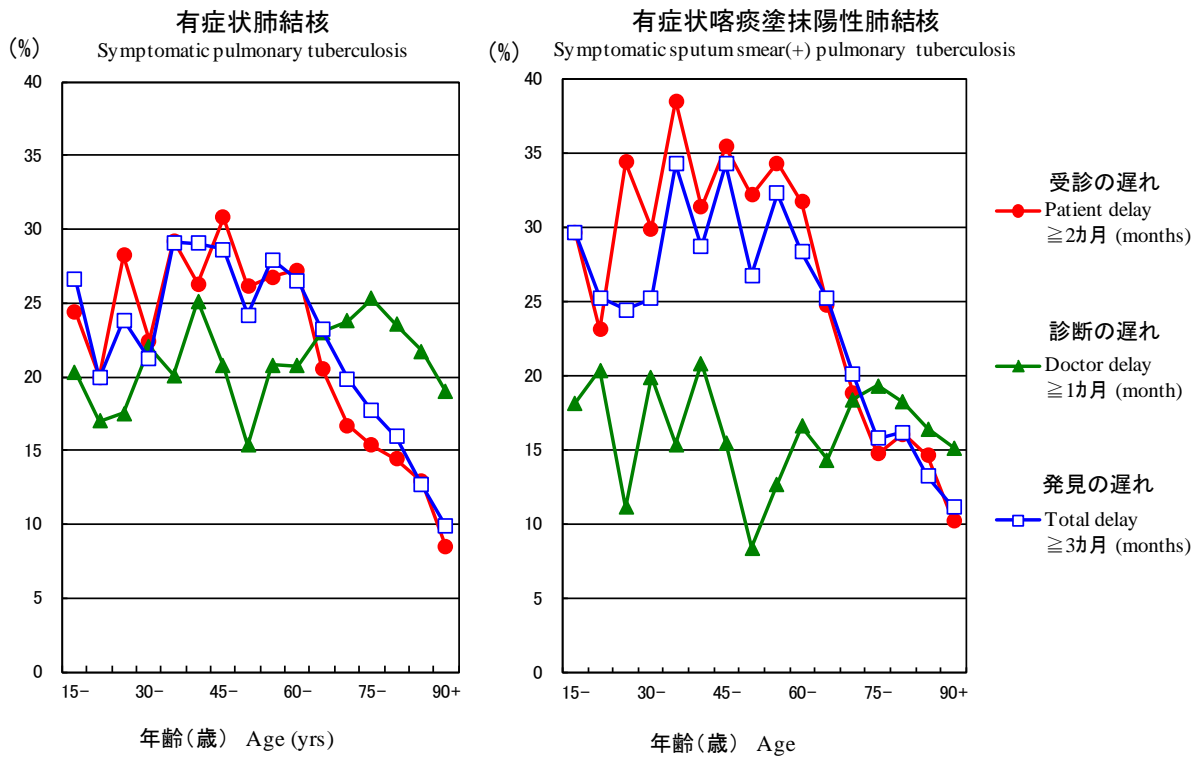


図2 新登録有症状肺結核中年齢5歳階層別発見の遅れの割合、2012年

Fig.2 Proportion of patient delay, doctor delay and total delay among symptomatic pulmonary tuberculosis patients by 5-year age group, in 2012

受診の遅れ:「発病の時期」(結核の症状が初めて自覚された時期)から「初診の時期」(結核による症状を訴えて初めて医療機関を受診した時期)までの期間が2カ月以上である場合。

Patient delay : The amount of time between the onset of symptoms and the initial consultation visit to a medical institution is 2 months or more.

診断の遅れ:「初診の時期」から「診断の時期」(結核と診断された時期)までの期間が1カ月以上である場合。

Doctor delay : The amount of time between the initial consultation visit of the patient to a medical institution and the diagnosis of tuberculosis is 1 month or more.

発見の遅れ:「発病の時期」から「診断の時期」までの期間が3カ月以上である場合。

Total delay : The amount of time between the onset of symptoms and the diagnosis of tuberculosis is 3 months or more.

表1 新登録結核患者の発見方法、1998～2012年

Table1 Proportion of mode of detection among newly notified tuberculosis patients, 1998-2012

年	新登録患者	個別健診	定期健診 Mass screening				接触者健診 Contact examination		医療機関 Medical institutions			その他	不明
			学校	住民	職場	施設	家族	その他	有症状受診 (*1)	入院中	通院中		
Year	Newly notified TB patients	Individual medical checkup	Schools	Residents	Employees	Facilities	Family	Others	Outpatients with TB symptoms(*1)	Inpatients with other diseases	Outpatients with other diseases	Others	Unknown
	<i>n</i>	%	%	%	%	%	%	%	%	%	%	%	%
1998	41,033	2.6	1.0	3.8	7.6	0.4	1.5	1.2	78.3	-	-	2.7	1.0
1999	43,818	2.6	0.9	3.4	7.6	0.5	1.5	1.4	78.5	-	-	2.9	0.8
2000	39,384	2.3	1.1	3.6	8.3	0.5	1.4	1.2	78.3	-	-	2.8	0.5
2001	35,489	2.4	1.1	3.5	8.2	0.5	1.4	1.3	78.6	-	-	2.7	0.3
2002	32,828	2.1	1.1	3.2	8.0	0.6	1.4	1.5	78.7	-	-	2.9	0.5
2003	31,638	2.0	1.0	2.8	7.7	0.6	1.4	1.4	79.7	-	-	2.9	0.5
2004	29,736	2.1	1.0	2.8	7.4	0.6	1.3	1.6	79.6	-	-	2.8	0.9
2005	28,319	2.1	0.9	2.4	7.3	0.5	1.4	1.7	80.4	-	-	2.4	0.9
2006	26,384	2.1	0.9	2.3	7.6	0.6	1.3	1.2	81.2	-	-	2.5	0.5
2007	25,311	2.1	0.9	2.5	7.6	0.6	1.4	1.5	67.2	8.0	6.4	1.3	0.6
2008	24,760	2.6	0.8	2.0	7.6	0.6	1.3	1.7	62.0	10.8	8.5	1.3	1.0
2009	24,170	2.5	0.8	2.3	7.2	0.6	1.3	1.3	61.5	11.4	9.2	1.2	0.6
2010	23,261	2.2	1.0	2.3	7.0	0.6	1.3	1.5	59.8	12.0	9.9	1.4	1.0
2011	22,681	2.1	0.8	2.2	6.8	0.6	1.6	2.1	58.1	12.9	11.1	1.5	0.4
2012	21,283	1.9	0.8	2.3	6.7	0.6	1.5	1.8	57.7	13.8	10.9	1.7	0.4

TB: tuberculosis

\*1 有症状:咳・痰・血痰・喀血等の「呼吸器症状」や、喘鳴、胸痛、背部痛、息切れ、発熱、寝汗、全身倦怠、体重減少等の「その他の症状」を有する場合。

TB symptoms: Respiratory symptoms such as cough, sputum expectoration, bloody sputum, and hemoptysis; and other symptoms such as wheezing, chest pain, back pain, dyspnea, fever, night sweating, fatigue tendency, and weight loss.

旧表 新登録結核患者の発見方法、年齢階層別、2012年  
Previous table Proportion of mode of detection among newly notified TB patients by age group, 2012

年齢階層 Age groups	新登録患者 Newly notified TB patients	個別健診 Individual medical checkup	定期健診 Mass screening				接触者健診 Contact examination		医療機関 Medical institutions			その他 Others	不明 Unknown
			学校 Schools	住民 Residents	職場 Employees	施設 Facilities	家族 Family	その他 Others	有症状受診 Outpatients with TB symptoms(*1)	入院中 Inpatients with other diseases	通院中 Outpatients with other diseases		
<b>全結核 All forms of TB</b>													
総数 Total	21,283	1.9	0.8	2.3	6.7	0.6	1.5	1.8	57.7	13.8	10.9	1.7	0.4
0-14	63	0.0	1.6	0.0	0.0	0.0	50.8	6.3	33.3	1.6	0.0	6.3	0.0
15-19	165	3.0	28.5	0.0	3.0	0.0	6.1	7.3	42.4	2.4	0.6	6.1	0.6
20-24	568	3.2	13.0	0.0	15.5	0.0	3.9	6.2	51.2	0.7	0.9	4.8	0.7
25-29	720	2.5	4.2	0.0	23.9	0.3	2.8	5.1	52.9	1.9	2.8	3.2	0.4
30-34	712	1.0	0.7	0.4	24.3	0.3	2.8	3.7	60.7	1.7	2.8	1.4	0.3
35-39	816	1.8	0.2	0.5	24.8	0.6	2.5	4.2	57.5	1.7	4.2	1.7	0.4
40-44	850	3.8	0.1	3.2	19.2	0.5	2.1	4.7	56.8	2.8	4.8	1.3	0.7
45-49	750	3.3	0.1	2.4	20.4	0.4	1.5	2.3	56.0	4.8	6.5	1.9	0.4
50-54	789	3.4	0.0	2.5	19.5	1.3	2.9	3.5	53.5	4.6	7.4	1.4	0.0
55-59	1,006	3.2	0.0	1.9	13.9	1.0	1.7	2.9	55.6	8.4	8.0	2.5	1.0
60-64	1,537	2.8	0.1	3.9	7.2	0.5	1.7	1.8	56.0	10.0	13.9	2.0	0.2
65-69	1,475	2.2	0.0	4.6	3.0	0.3	1.8	0.9	56.0	12.6	15.5	2.6	0.5
70-74	1,984	2.5	0.0	4.0	0.6	0.3	0.8	1.0	57.7	15.8	15.4	1.7	0.2
75-79	2,611	1.5	0.0	3.6	0.2	0.5	0.7	0.6	58.1	18.1	15.5	0.9	0.3
80-84	3,100	1.0	0.0	2.0	0.0	0.4	0.6	0.6	58.2	20.8	14.7	1.2	0.4
85-89	2,653	0.9	0.0	1.2	0.1	0.8	0.5	0.3	61.2	22.2	11.3	1.1	0.5
90+	1,484	0.7	0.0	0.7	0.0	1.5	0.2	0.5	64.8	23.7	6.5	1.1	0.5
<b>(再掲) 喀痰塗抹陽性肺結核 (Re-count) Sputum smear positive pulmonary TB</b>													
総数 Total	8,237	1.2	0.3	1.7	3.9	0.4	0.5	0.6	65.4	14.7	9.6	1.4	0.3
0-14	5	0.0	0.0	0.0	0.0	0.0	0.0	0.0	80.0	0.0	0.0	20.0	0.0
15-19	40	7.5	15.0	0.0	2.5	0.0	2.5	7.5	62.5	0.0	0.0	2.5	0.0
20-24	144	2.1	7.6	0.0	13.9	0.0	0.7	0.7	69.4	0.0	0.7	4.9	0.0
25-29	193	1.6	1.6	0.0	14.5	0.0	0.5	1.0	75.1	1.0	1.6	2.6	0.5
30-34	212	1.4	0.5	0.0	17.0	0.5	1.9	0.5	75.0	0.5	1.9	0.9	0.0
35-39	236	1.3	0.0	0.4	18.6	0.4	0.0	1.3	72.0	0.0	5.1	0.8	0.0
40-44	273	4.4	0.0	3.7	10.3	0.4	1.8	1.1	70.7	2.9	2.2	1.5	1.1
45-49	282	2.5	0.0	1.4	16.7	1.1	0.4	0.7	66.7	3.9	5.3	1.1	0.4
50-54	283	1.1	0.0	1.1	14.1	1.8	1.4	1.1	67.1	4.2	6.4	1.8	0.0
55-59	397	2.0	0.0	1.3	9.1	0.3	0.5	1.8	69.5	7.6	5.3	2.0	0.8
60-64	592	1.2	0.2	2.7	4.7	0.0	0.5	0.5	67.9	9.8	10.3	1.9	0.3
65-69	569	1.1	0.0	2.6	1.4	0.0	1.4	1.1	63.8	12.8	13.4	2.5	0.0
70-74	757	1.1	0.0	3.0	0.8	0.1	0.3	0.5	67.1	13.3	12.0	1.6	0.1
75-79	1,044	1.1	0.0	2.6	0.2	0.3	0.2	0.4	60.3	20.4	13.3	1.0	0.3
80-84	1,315	0.9	0.0	1.7	0.0	0.4	0.5	0.2	59.5	21.8	13.9	1.0	0.1
85-89	1,217	0.6	0.0	0.9	0.1	0.5	0.2	0.2	65.2	20.9	9.9	1.0	0.5
90+	678	0.6	0.0	0.3	0.0	1.2	0.0	0.3	67.1	23.9	5.5	1.0	0.1

TB: tuberculosis

\*1 有症状: 咳・痰・血痰・喀血等の「呼吸器症状」や、喘鳴、胸痛、背部痛、息切れ、発熱、寝汗、全身倦怠、体重減少等の「その他の症状」を有する場合。

TB symptoms: Respiratory symptoms such as cough, sputum expectoration, bloody sputum, and hemoptysis; and other symptoms such as wheezing, chest pain, back pain, dyspnea, fever, night sweating, fatigue tendency, and weight loss.

旧表改訂 新登録結核患者数、職業・性・年齢階層別、2012年  
Previous table Number of newly notified TB patients by occupation, sex and age group, 2012

性/年齢	総数	接客業	看護師 /保健 師	医師	他医療 従事者	教員/ 保育士	生徒/ 学生	他常用 勤労者	他臨時 /日雇	他自営/ 自由業	家事従 事者	保育園児/ 幼稚園児/ 他の乳幼児	無職/ 他	不明
Sex/Age group	Total	Service workers	Nurses/P ublic health nurses	Medical doctors	Other medical workers	Teachers/ Nursery nurses	Pupils/St udents	Other regular workers	Other temporar y/daily workers	Other self- employed	Housekee pers	Infants/ Little children	Jobless/ Others	Unknown
男 Male	12,988	343	16	56	77	37	252	2,283	487	785	15	19	8,342	276
0-14	34	-	-	-	-	-	14	-	-	-	-	19	1	-
15-19	93	-	-	-	-	-	68	11	4	-	-	-	9	1
20-24	292	23	2	-	7	-	117	104	13	3	-	-	18	5
25-29	382	42	4	6	15	1	40	179	30	11	-	-	41	13
30-39	833	83	6	8	22	11	9	459	45	51	-	-	122	17
40-49	1,011	53	2	3	14	8	2	515	78	92	-	-	219	25
50-59	1,294	56	1	20	12	5	1	549	101	126	1	-	393	29
60-69	2,124	55	-	4	6	12	1	380	140	234	1	-	1,210	81
70-79	2,931	28	1	3	1	-	-	75	71	186	5	-	2,515	46
80+	3,994	3	-	12	-	-	-	11	5	82	8	-	3,814	59
女 Female	8,295	226	278	6	203	37	182	685	260	143	497	13	5,607	158
0-14	29	-	-	-	-	-	16	-	-	-	-	13	-	-
15-19	72	1	-	-	-	-	59	7	2	-	-	-	3	-
20-24	276	25	15	-	12	4	69	78	20	1	10	-	35	7
25-29	338	35	34	-	20	7	29	110	20	4	29	-	40	10
30-39	695	59	99	3	46	6	8	172	56	12	87	-	116	31
40-49	589	37	67	1	57	6	1	142	59	18	63	-	117	21
50-59	501	24	48	-	41	10	-	101	44	21	58	-	138	16
60-69	888	29	12	1	23	2	-	65	41	41	125	-	525	24
70-79	1,664	14	3	1	3	2	-	10	15	33	82	-	1,480	21
80+	3,243	2	-	-	1	-	-	-	3	13	43	-	3,153	28

旧表 職業別、20～59歳新登録肺結核患者の発見方法別割合、2012年  
Previous table Proportion of mode of detection among newly notified pulmonary TB patients aged 20-59 years by occupation, 2012

	肺結核 Pulmonary TB patients	個別健 診 Individual medical checkup	定期健診 Mass screening			接触者健診 Contact examination		医療機関 Clinics/Hospitals			その他/ 不明 Others/Un known
			住民 Residents	職場 Employe es	学校/施 設 Schools/F acilities	家族 Family	その他 Others	有症状 受診(*2) Outpatient s with TB symptoms	入院中 with other diseases Inpatients	通院中 with other diseases Outpatients	
総数 Total	5,085	3.2	1.7	23.8	2.8	2.9	4.5	50.6	3.1	4.5	2.9
接客業 Service workers	351	1.1	1.4	22.5	0.0	1.7	4.3	59.8	4.0	3.4	1.7
医療関係者 Medical workers(*1)	459	3.1	0.4	39.0	0.4	1.7	15.5	33.1	0.7	3.5	2.6
教員・保育士 Teachers/ Nursery nurses	51	5.9	0.0	31.4	0.0	3.9	5.9	52.9	0.0	0.0	0.0
学生 Students	240	4.2	0.0	0.8	44.2	0.8	2.9	35.0	0.4	0.8	10.8
他の常用勤労者 Other regular workers	1,994	2.4	1.0	39.7	0.3	2.8	3.1	44.0	1.6	3.9	1.4
他の臨時・日雇 Other temporary/ daily workers	379	2.6	4.2	17.7	0.0	4.5	2.9	59.9	0.8	3.7	3.7
他の自営自由業 Other self-employed	290	5.2	6.2	7.9	0.0	3.8	1.7	65.5	2.1	5.2	2.4
家事 Housekeepers	193	6.2	4.7	3.1	0.0	4.7	1.0	68.4	2.6	5.7	3.6
無職 Jobless/ Others	940	4.7	1.6	2.3	2.8	3.6	4.4	58.7	9.9	8.1	3.9
不明 Unknown	188	2.1	1.6	12.2	2.1	1.6	5.3	65.4	1.1	2.1	6.4

\*1 医療関係者：看護師・保健師・助産師、医師、その他医療職含む。

Medical workers include nurses, public health nurses, medical doctors and dentists, physical therapists, occupational therapists, medical technologists, radiographers, and co-medicals.

\*2 有症状：咳・痰・血痰・喀血等の「呼吸器症状」や、喘鳴、胸痛、背部痛、息切れ、発熱、寝汗、全身倦怠、体重減少等の「その他の症状」を有する場  
TB symptoms: Respiratory symptoms such as cough, sputum expectoration, bloody sputum, and hemoptysis; and other symptoms such as wheezing, chest pain, back pain, dyspnea, fever, night sweating, fatigue tendency, and weight loss.

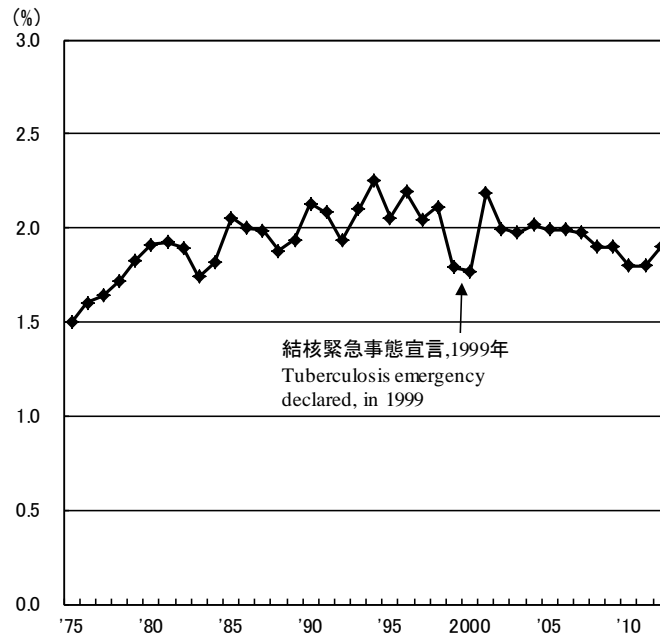
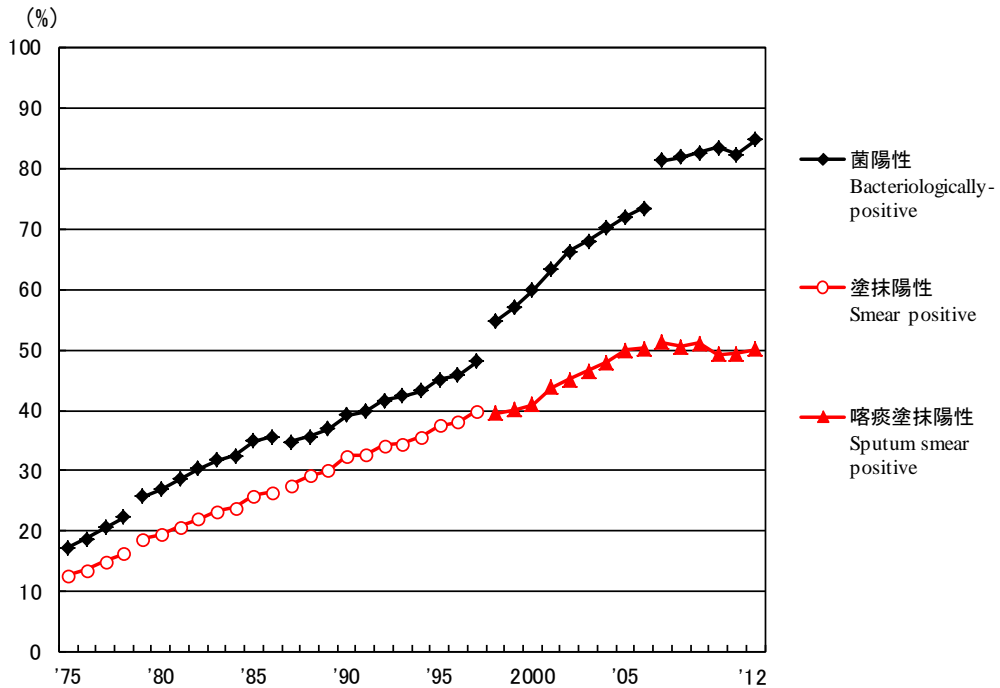


図3 新登録肺結核患者中胸部X線写真での広汎空洞型割合の推移、1975～2012年  
 Fig.3 Proportion of far-advanced cavitory cases among newly notified pulmonary Tuberculosis patients, 1975-2012



旧図 新登録肺結核患者中菌陽性割合の推移、1975～2012年  
 Previous Fig.  
 Proportion of bacteriologically confirmed cases among newly notified pulmonary tuberculosis patients, 1975-2012

資料と対象 Sources of information and subjects:

結核登録者の定期報告 Annual tuberculosis reports from public health centers

1975-1978: 全結核 All forms of tuberculosis

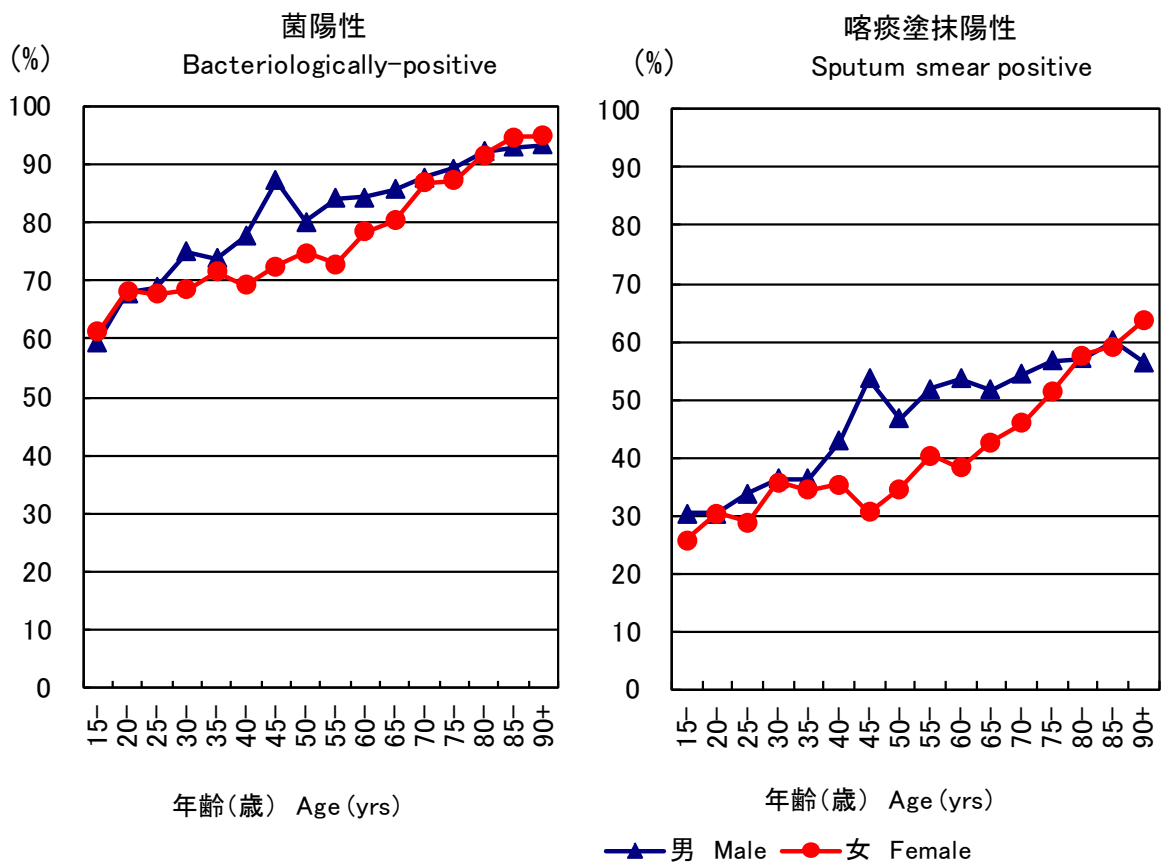
1979-1986: 肺結核 Pulmonary tuberculosis

電算化結核サーベイランスシステム Nationwide computerized tuberculosis surveillance system

1987-1997: 肺結核 Pulmonary Tuberculosis

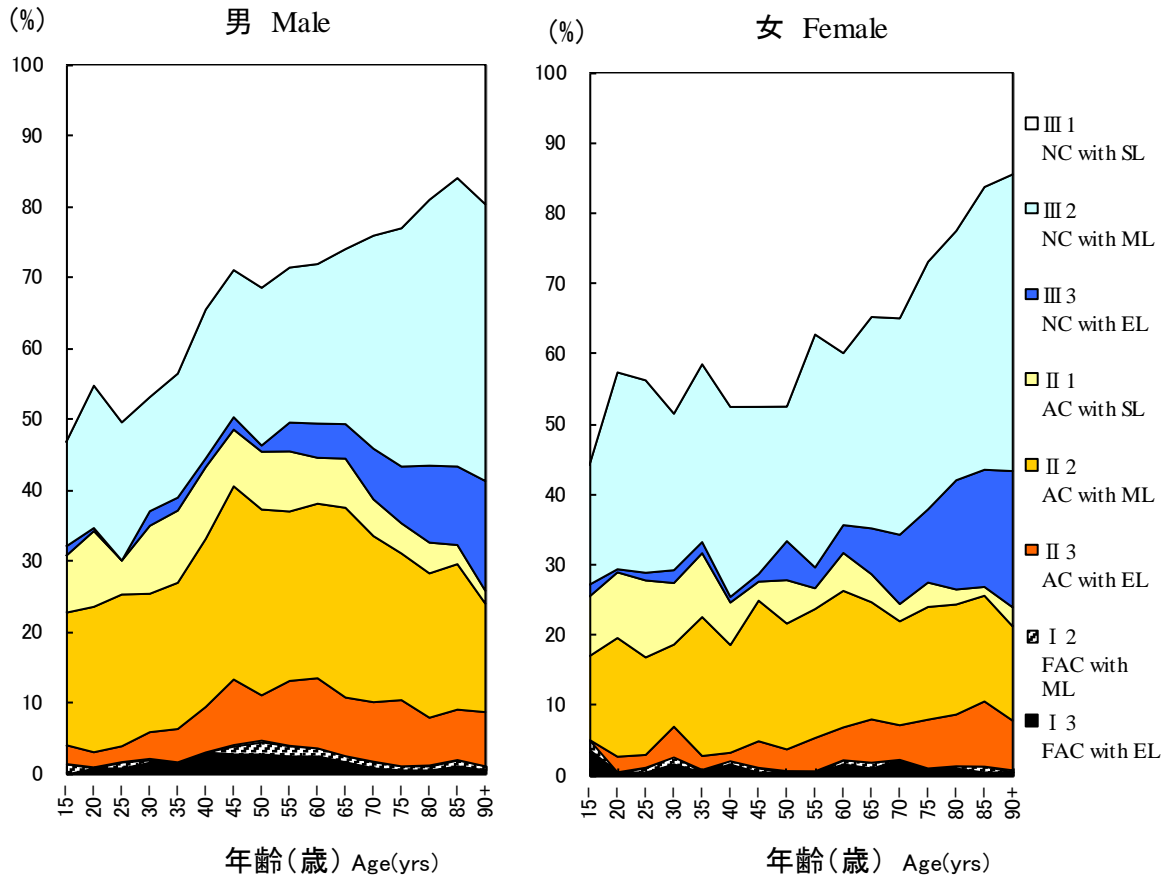
1998-2006: 肺結核(活動性分類の変更) Pulmonary tuberculosis (New patient criteria for notification were applied)

2007-2009: 肺結核(核酸増幅法項目の追加) Pulmonary tuberculosis (Item of nucleic acid amplification was added)



旧 図 新登録肺結核患者中菌陽性割合、性・年齢5歳階級別、2012年  
Previous Fig.

Proportion of bacteriologically confirmed cases among newly notified pulmonary tuberculosis patients by sex and 5-year age group, 2012



旧図 新登録肺結核患者中胸部X線写真学会分類別所見割合, 性・年齢5 歳階級別, 2012 年  
 Previous Fig. Proportion of cases classified by X-ray Gakkai classification by sex and 5-yearage group, 2012  
 NC : Non-cavitary SL : Slight lesion AC : Advanced cavitary ML : Moderate lesion  
 FAC: Far-advance cavitary EL : Extensive lesion

旧表 性・職業別、30~59歳新登録肺結核患者中有空洞あるいは／かつ喀痰塗抹陽性の割合、2012年  
 Previous table Proportion of cavitary or/and sputum smear positive cases among newly notified pulmonary TB patients aged 30-59 years, 2012

	男 Male						女 Female							
	肺結核 Pulmonary TB	有空洞あるいは 喀痰塗抹陽性 Cavitary or sputum smear(+)			有空洞かつ 喀痰塗抹陽性 Cavitary and sputum smear(+)			肺結核 Pulmonary TB	有空洞あるいは 喀痰塗抹陽性 Cavitary or sputum smear(+)			有空洞かつ 喀痰塗抹陽性 Cavitary and sputum smear(+)		
		n	%	Ratio	n	%	Ratio		n	%	Ratio	n	%	Ratio
接客業 Service workers	167	101	60.5	1.8	53	31.7	4.6	79	36	45.6	1.3	15	19.0	2.6
医療職 Medical workers	72	24	33.3	1.0	5	6.9	1.0	289	104	36.0	1.0	21	7.3	1.0
教員・保育士 Teachers/ Nursery nurses	21	9	42.9	1.3	6	28.6	4.1	20	12	60.0	1.7	2	10.0	1.4
他の常用勤労者 Other regular workers	1,269	666	52.5	1.6	337	26.6	3.8	326	131	40.2	1.1	42	12.9	1.8
他の臨時・日雇 Other temporary/ daily workers	195	128	65.6	2.0	91	46.7	6.7	117	59	50.4	1.4	27	23.1	3.2
他の自営自由 Other self- employed	234	157	67.1	2.0	85	36.3	5.2	41	25	61.0	1.7	9	22.0	3.0
無職 Jobless	592	367	62.0	1.9	204	34.5	5.0	261	137	52.5	1.5	55	21.1	2.9
その他 Others	99	52	52.5	1.6	23	23.2	3.3	216	110	50.9	1.4	54	25.0	3.4
総数 Total	2,649	1,504	56.8		804	30.4		1,349	614	45.5		225	16.7	

その他: 家事、学生、不明 Others: Houskeepers/ Students/ Unknown

Ratio: 医療職の割合に対するその他職業の割合の比 The ratio of each proportion to that of medical workers



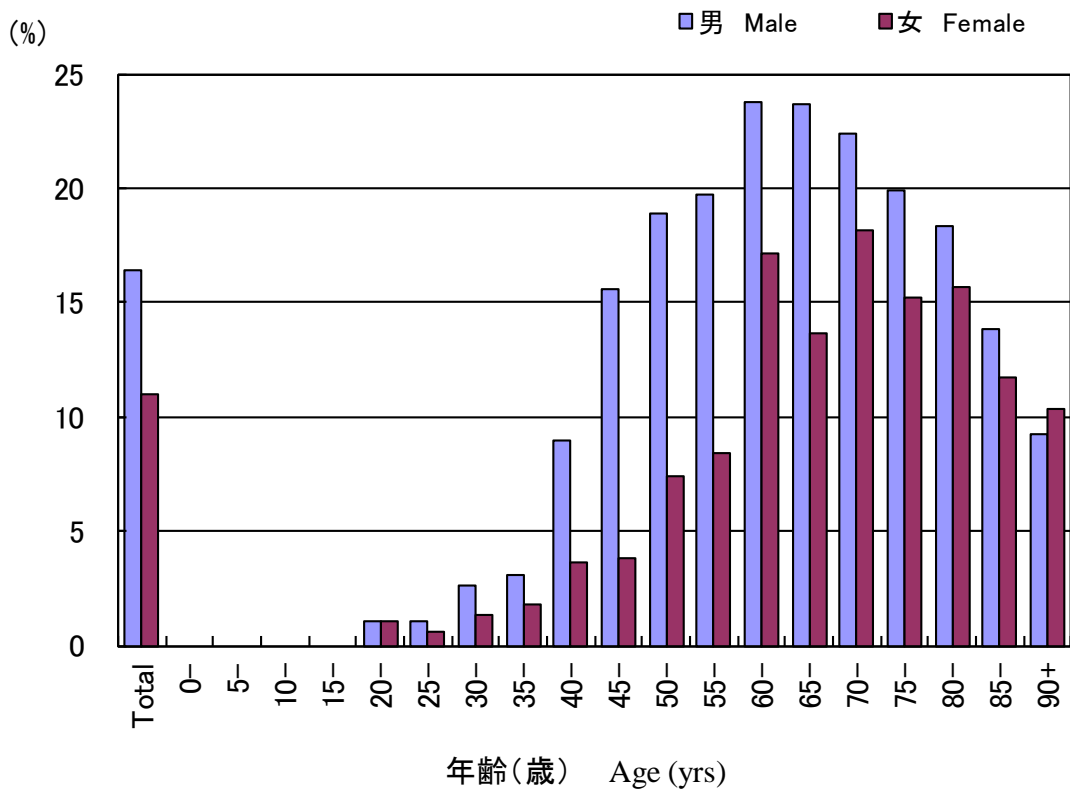


図4 新登録結核患者中「糖尿病合併あり」と報告された患者の割合、性・年齢階層別、2012年  
 Fig.4 Proportion of newly notified tuberculosis patients with diabetes mellitus in each age-group by sex, 2012

表2 新登録結核患者中「HIV合併あり」と報告された患者数、性・年齢階層別、2012年および2007～2012年  
 Table 2 Number of newly notified tuberculosis patients with HIV infection, by sex and age group, 2012 and 2007-2012

年齢階層 Age group	喀痰塗抹陽性 Sputum smear positive		他結核菌陽性 Other bacteriologically-positive		菌陰性結核 Bacteriologically-negative		肺外結核 Extra-pulmonary		総数 Total	
	男 M	女 F	男 M	女 F	男 M	女 F	男 M	女 F	男 M	女 F
2012年 2012 Calendar year										
総計 Total	22 (1)	4 (1)	6 (1)	1 (1)	4 (2)	1 (1)	19	5 (2)	51 (4)	11 (5)
0-19	0	0	0	0	0	0	1	0	1	0
20-24	1 (1)	0	1	0	0	0	0	0	2 (1)	0
25-29	1	0	0	0	1 (1)	0	1	0	3 (1)	0
30-34	1	0	0	1 (1)	0	0	2	1	3	2 (1)
35-39	0	0	0	0	1	0 1	3	0	4	0
40-44	4	0	1 (1)	0	0	1	4	1 (1)	9 (1)	2 (2)
45-49	1	1 (1)	0	0	1 1	0	4	0	6 (1)	1 (1)
50-54	2	0	0	0	0	0	1	0	3	0
55-59	1	0	1	0	0	0	1	1 1	3	1 (1)
60-64	4	0	1	0	0	0	1	0	6	0
65-69	4	0	1	0	1	0	1	1	7	1
70-74	1	1	0	0	0	0	0	0	1	1
75-79	0	0	0	0	0	0	0	1	0	1
80+	2	2	1	0	0	0	0	0	3	2
2007～2012年 2007-2012 Calendar year										
総計 Total	108 (10)	20 (13)	55 (10)	8 (5)	31 (4)	5 (3)	120 (21)	19 (10)	314 (45)	52 (31)
0-19	1 (1)	0	0	0	0	0	2	0	3 (1)	0
20-24	3 (2)	0	1	0	1 (1)	1 (1)	1	1	6 (3)	2 (1)
25-29	6 (3)	3 (2)	1 (1)	1 (1)	1 (1)	0	8 (1)	0	16 (6)	4 (3)
30-34	9 (3)	4 (4)	5	3 (2)	1	1 (1)	13 (4)	4 (2)	28 (7)	12 (9)
35-39	16	3 (3)	14 (4)	1 (1)	5	0 (1)	20 (3)	2 (2)	55 (7)	6 (6)
40-44	21	3 (3)	10 (4)	0	6 (1)	3	28 (10)	5 (4)	65 (15)	11 (8)
45-49	11 (1)	1 (1)	4	1 (1)	3 (1)	0	23 (3)	0	41 (5)	2 (2)
50-54	9	0	8 (1)	0	3	0	6	0	26 (1)	0
55-59	5	0	2	0	4	0	7	2 (2)	18	2 (2)
60-64	9	1	5	0	3	0	4	0	21	1
65-69	9	0	2	0	2	0	3	1	16	1
70-74	2	2	1	0	1	0	1	1	5	3
75-79	2	0	0	0	1	0	3	2	6	2
80+	5	3	2	2	0	0	1	1	8	6

( ): 外国人患者の再掲 Re-count of foreigners

HIV : Human Immunodeficiency Virus. M : male patients, F : female patients.

表3 新登録肺結核患者から分離培養された結核菌の抗結核薬剤感受性検査結果、治療歴別、2007～2012年

Table 3 Drug susceptibility test results among newly notified pulmonary tuberculosis patients, by treatment history, 2007-2012

治療歴、菌検査状況、耐性状況 Treatment history, Culture examination results, Drug susceptibility test results	2007				2008				2009				2010				2011				2012			
	n	%	%	%	n	%	%	%	n	%	%	%	n	%	%	%	n	%	%	%	n	%	%	%
総数 Total																								
肺結核 Pulmonary tuberculosis	19,893	100%			19,393	100%			18,912	100%			18,328	100%			17,519	100%			16,432	100%		
培養結果把握 Culture result obtained	12,690	63.8			12,087	62.3			14,146	74.8			14,656	80.0			13,902	79.4			14,058	85.6		
培養陽性 Culture positive	9,983	50.2	100%		9,480	48.9	100%		10,902	57.6	100%		11,495	62.7	100%		10,915	62.3	100%		11,261	68.5	100%	
感受性結果把握 DST result obtained	4,173		41.8	100%	4,332		45.7	100%	6,920		63.5	100%	8,380		72.9	100%	8,046		73.7	100%	8,347		74.1	100%
多剤耐性 MDR	50			1.2	48			1.1	56			0.8	68			0.8	60			0.7	60			0.7
INH 耐性 Any INH resistance	258			6.2	211			4.9	346			5.0	396			4.7	386			4.8	380			4.6
RFP 耐性 Any RFP resistance	72			1.7	64			1.5	80			1.2	95			1.1	86			1.1	73			0.9
1 剤以上耐性 Any resistance*	628			15.0	550			12.7	903			13.0	1,025			12.2	998			12.4	810			9.7
初回治療 New treatment																								
肺結核 Pulmonary tuberculosis	18,220	100%			17,515	100%			17,125	100%			16,481	100%			15,761	100%			15,040	100%		
培養結果把握 Culture result obtained	11,602	63.7			10,845	61.9			12,801	74.8			13,164	79.9			12,454	79.0			12,882	85.7		
培養陽性 Culture positive	9,148	50.2	100%		8,540	48.8	100%		9,899	57.8	100%		10,374	62.9	100%		9,800	62.2	100%		10,379	69.0	100%	
感受性結果把握 DST result obtained	3,752		41.0	100%	3,885		45.5	100%	6,276		63.4	100%	7,553		72.8	100%	7,226		73.7	100%	7,676		74.0	100%
多剤耐性 MDR	23			0.6	28			0.7	34			0.5	38			0.5	38			0.5	38			0.5
INH 耐性 Any INH resistance	194			5.2	163			4.2	276			4.4	311			4.1	297			4.1	310			4.0
RFP 耐性 Any RFP resistance	36			1.0	39			1.0	50			0.8	56			0.7	57			0.8	46			0.6
1 剤以上耐性 Any resistance*	516			13.8	470			12.1	780			12.4	876			11.6	858			11.9	712			9.3
再治療 Re-treatment																								
肺結核 Pulmonary tuberculosis	1,409	100%			1,542	100%			1,468	100%			1,461	100%			1,351	100%			1,094	100%		
培養結果把握 Culture result obtained	946	67.1			1,059	68.7			1,134	77.2			1,217	83.3			1,151	85.2			959	87.7		
培養陽性 Culture positive	713	50.6	100%		779	50.5	100%		830	56.5	100%		885	60.6	100%		863	63.9	100%		693	63.3	100%	
感受性結果把握 DST result obtained	376		52.7	100%	391		50.2	100%	559		67.3	100%	694		78.4	100%	661		76.6	100%	555		80.1	100%
多剤耐性 MDR	27			7.2	20			5.1	20			3.6	27			3.9	22			3.3	22			4.0
INH 耐性 Any INH resistance	63			16.8	48			12.3	65			11.6	79			11.4	80			12.1	67			12.1
RFP 耐性 Any RFP resistance	36			9.6	24			6.1	28			5.0	36			5.2	28			4.2	26			4.7
1 剤以上耐性 Any resistance*	107			28.5	75			19.2	112			20.0	132			19.0	122			18.5	94			16.9
治療歴不明 No information about treatment history																								
肺結核 Pulmonary tuberculosis	264	100%			336	100%			319	100%			386	100%			407	100%			298	100%		
培養結果把握 Culture result obtained	142	53.8			183	54.5			211	66.1			275	71.2			297	73.0			217	72.8		
培養陽性 Culture positive	122	46.2	100%		161	47.9	100%		173	54.2	100%		236	61.1	100%		252	61.9	100%		189	63.4	100%	
感受性結果把握 DST result obtained	45		36.9	100%	56		34.8	100%	85		49.1	100%	133		56.4	100%	159		63.1	100%	116		61.4	100%
多剤耐性 MDR	0			0.0	0			0.0	2			2.4	3			2.3	0			0.0	0			0.0
INH 耐性 Any INH resistance	1			2.2	0			0.0	5			5.9	6			4.5	9			5.7	3			2.6
RFP 耐性 Any RFP resistance	0			0.0	1			1.8	2			2.4	3			2.3	1			0.6	1			0.9
1 剤以上耐性 Any resistance*	5			11.1	5			8.9	11			12.9	17			12.8	18			11.3	4			3.4

DST: Drug susceptibility test MDR: Multi-drug resistant, i.e., resistant to at least INH and RFP INH: isoniazid RFP: rifampicin

感受性結果は重複あり Cases having drug resistance are counted independently by drug.

\*: 2012年はINH, RFP, SM EBの4剤のうちいずれかに耐性

旧表 新登録肺結核患者の薬剤感受性検査結果、性・年齢別、2012年および2007～2012年

Previous table Drug susceptibility test results among newly notified pulmonary tuberculosis patients, by sex and age group, 2012 and 2007-2012

年齢 Age group	総数 Total										初回治療(再掲) New treatment (Re-count)									
	男 Male					女 Female					男 Male					女 Female				
	感受性結 果把握	多剤耐 性	INH耐 性	RFP耐 性	1剤以 上耐性 *	感受性結 果把握	多剤耐 性	INH耐 性	RFP耐 性	1剤以 上耐性 *	感受性結 果把握	多剤耐 性	INH耐 性	RFP耐 性	1剤以 上耐性 *	感受性結 果把握	多剤耐 性	INH耐 性	RFP耐 性	1剤以 上耐性 *
	DST result obtained	MDR	Any INH resista nce	Any RFP resista nce	Any resista nce	DST result obtained	MDR	Any INH resista nce	Any RFP resista nce	Any resista nce	DST result obtained	MDR	Any INH resista nce	Any RFP resista nce	Any resista nce	DST result obtained	MDR	Any INH resista nce	Any RFP resista nce	Any resista nce
2012年 2012 Calendar year																				
総数 Total	5,425	44	258	55	556	2,922	16	124	18	256	4,927	29	213	35	489	2,749	9	99	11	225
0-19	31	3	4	3	4	28	0	1	0	4	30	2	3	2	3	25	0	0	0	3
20-29	256	3	17	4	46	216	4	18	6	35	246	3	15	4	44	204	3	15	5	31
30-39	340	4	30	4	52	237	3	14	3	32	320	4	28	4	49	228	1	12	1	29
40-49	448	3	19	6	53	216	1	11	1	30	415	3	17	5	48	199	0	9	0	27
50-59	575	6	39	8	80	164	1	7	1	12	531	4	33	5	70	159	0	5	0	10
60-69	966	7	41	9	109	283	2	16	2	30	894	3	34	4	96	266	2	14	2	26
70-79	1,219	10	55	11	119	546	1	23	1	47	1,092	4	42	5	102	509	1	20	1	44
80+	1,590	8	53	10	93	1,232	4	34	4	66	1,399	6	41	6	77	1,159	2	24	2	55
2007～2012年 2007-2012 Calendar year																				
総数 Total	26,859	218	1,342	309	3,393	13,339	124	637	161	1,523	23,989	131	1,050	189	2,897	12,379	68	503	95	1,317
0-19	174	5	15	5	35	173	1	13	1	36	169	4	14	4	34	163	1	11	1	32
20-29	1,360	24	88	32	245	1,147	29	93	38	200	1,301	18	75	25	230	1,085	20	80	27	181
30-39	1,801	14	117	23	283	1,359	16	83	25	201	1,694	10	107	19	263	1,297	11	73	16	181
40-49	2,226	19	119	29	323	1,032	14	53	21	154	2,071	12	103	18	286	972	8	46	14	141
50-59	3,439	33	192	51	528	880	11	43	15	107	3,165	20	162	32	471	832	3	30	7	92
60-69	4,981	37	265	60	713	1,296	12	75	13	179	4,493	23	216	34	611	1,207	6	55	6	149
70-79	5,964	53	288	67	715	2,582	20	113	23	277	5,180	26	196	33	571	2,347	8	85	11	234
80+	6,914	33	258	42	551	4,870	21	164	25	369	5,916	18	177	24	431	4,476	11	123	13	307
2007～2012年 2007-2012 Calendar year																				
総数 Total	100%	0.8	5.0	1.2	12.6	100%	0.9	4.8	1.2	11.4	100%	0.5	4.4	0.8	12.1	100%	0.5	4.1	0.8	10.6
0-19	100	2.9	8.6	2.9	20.1	100	0.6	7.5	0.6	20.8	100	2.4	8.3	2.4	20.1	100	0.6	6.7	0.6	19.6
20-29	100	1.8	6.5	2.4	18.0	100	2.5	8.1	3.3	17.4	100	1.4	5.8	1.9	17.7	100	1.8	7.4	2.5	16.7
30-39	100	0.8	6.5	1.3	15.7	100	1.2	6.1	1.8	14.8	100	0.6	6.3	1.1	15.5	100	0.8	5.6	1.2	14.0
40-49	100	0.9	5.3	1.3	14.5	100	1.4	5.1	2.0	14.9	100	0.6	5.0	0.9	13.8	100	0.8	4.7	1.4	14.5
50-59	100	1.0	5.6	1.5	15.4	100	1.3	4.9	1.7	12.2	100	0.6	5.1	1.0	14.9	100	0.4	3.6	0.8	11.1
60-69	100	0.7	5.3	1.2	14.3	100	0.9	5.8	1.0	13.8	100	0.5	4.8	0.8	13.6	100	0.5	4.6	0.5	12.3
70-79	100	0.9	4.8	1.1	12.0	100	0.8	4.4	0.9	10.7	100	0.5	3.8	0.6	11.0	100	0.3	3.6	0.5	10.0
80+	100	0.5	3.7	0.6	8.0	100	0.4	3.4	0.5	7.6	100	0.3	3.0	0.4	7.3	100	0.2	2.7	0.3	6.9

DST: Drug susceptibility test. MDR: Multi-drug resistance, i.e., resistant to at least INH and RFP. INH: Isoniazid. RFP: Rifampicin.

\*: 2012年はINH, RFP, SM EBの4剤のうちのいずれかに耐性

旧表 新登録肺結核患者の薬剤感受性検査結果および耐性率、性・年齢別、2007～2012年（再掲；外国人）

Previous table Drug susceptibility test results among newly notified pulmonary tuberculosis patients, by sex and age group, 2007-2012 (Re-count of foreigners)

年齢 Age group	総数 Total										初回治療(再掲) New treatment (Re-count)									
	男 Male					女 Female					男 Male					女 Female				
	感受性結果把握 DST result obtained	多剤耐性 MDR	INH耐性 Any INH resistance	RFP耐性 Any RFP resistance	1剤以上耐性* Any resistance	感受性結果把握 DST result obtained	多剤耐性 MDR	INH耐性 Any INH resistance	RFP耐性 Any RFP resistance	1剤以上耐性* Any resistance	感受性結果把握 DST result obtained	多剤耐性 MDR	INH耐性 Any INH resistance	RFP耐性 Any RFP resistance	1剤以上耐性* Any resistance	感受性結果把握 DST result obtained	多剤耐性 MDR	INH耐性 Any INH resistance	RFP耐性 Any RFP resistance	1剤以上耐性* Any resistance
2007～2012年	2007-2012 Calendar year																			
総数 Total	648	25	61	29	115	767	40	102	50	170	608	17	46	21	101	714	28	85	35	145
0-19	25	4	7	4	11	21	1	2	1	2	24	3	6	3	10	20	1	1	1	1
20-29	288	16	31	20	55	337	26	57	32	93	276	11	22	15	49	320	19	48	24	82
30-39	126	4	10	4	18	200	8	26	10	40	121	3	9	3	16	184	5	23	6	35
40-49	71	1	5	1	13	118	2	10	4	22	64	0	3	0	10	108	1	9	2	19
50-59	49	0	2	0	5	39	0	3	0	4	46	0	2	0	5	35	0	1	0	1
60-69	35	0	2	0	8	21	1	2	1	3	29	0	1	0	7	21	1	2	1	3
70-79	28	0	2	0	3	15	2	2	2	3	26	0	2	0	3	11	1	1	1	1
80+	26	0	2	0	2	16	0	0	0	3	22	0	1	0	1	15	0	0	0	3
2007～2012年	2007-2012 Calendar year																			
総数 Total	100%	3.9	9.4	4.5	17.7	100%	5.2	13.3	6.5	22.2	100%	2.8	7.6	3.5	16.6	100%	3.9	11.9	4.9	20.3
0-19	100	16.0	28.0	16.0	44.0	100	4.8	9.5	4.8	9.5	100	12.5	25.0	12.5	41.7	100	5.0	5.0	5.0	5.0
20-29	100	5.6	10.8	6.9	19.1	100	7.7	16.9	9.5	27.6	100	4.0	8.0	5.4	17.8	100	5.9	15.0	7.5	25.6
30-39	100	3.2	7.9	3.2	14.3	100	4.0	13.0	5.0	20.0	100	2.5	7.4	2.5	13.2	100	2.7	12.5	3.3	19.0
40-49	100	1.4	7.0	1.4	18.3	100	1.7	8.5	3.4	18.6	100	0.0	4.7	0.0	15.6	100	0.9	8.3	1.9	17.6
50-59	100	0.0	4.1	0.0	10.2	100	0.0	7.7	0.0	10.3	100	0.0	4.3	0.0	10.9	100	0.0	2.9	0.0	2.9
60-69	100	0.0	5.7	0.0	22.9	100	4.8	9.5	4.8	14.3	100	0.0	3.4	0.0	24.1	100	4.8	9.5	4.8	14.3
70-79	100	0.0	7.1	0.0	10.7	100	13.3	13.3	13.3	20.0	100	0.0	7.7	0.0	11.5	100	9.1	9.1	9.1	9.1
80+	100	0.0	7.7	0.0	7.7	100	0.0	0.0	0.0	18.8	100	0.0	4.5	0.0	4.5	100	0.0	0.0	0.0	20.0

DST: Drug susceptibility test. MDR: Multi-drug resistance, i.e., resistant to at least INH and RFP. INH: Isoniazid. RFP: Rifampicin.

\*: 2012年はINH, RFP, SM EBの4剤のうちのいずれかに耐性