

【患者発見】

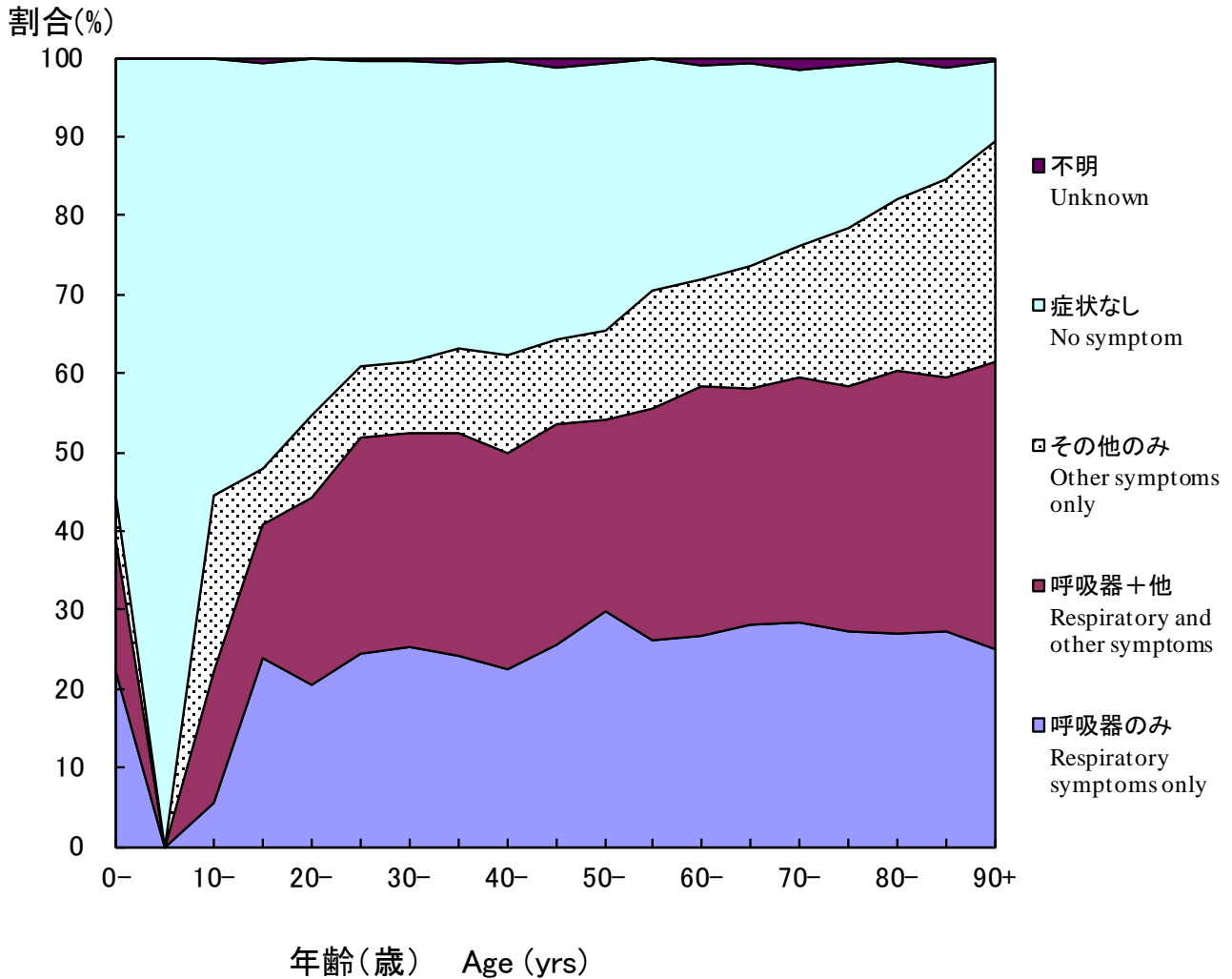


図1 新登録肺結核中 年齢5歳階層別症状の有無、2013年

Fig.1 Proportion of symptoms among newly notified pulmonary tuberculosis patients by 5-years age group, in 2013

呼吸器症状は咳, 痰, 血痰, 喀血を含む。その他の症状は喘鳴, 胸痛, 背部痛, 息切れ, 発熱, 寝汗, 全身倦怠, 体重減少を含む。

Respiratory symptoms include cough, sputum expectoration, bloody sputum, and hemoptysis. Other symptoms include wheezing, chest pain, back pain, dyspnea, fever, night sweating, fatigue tendency, and weight loss.

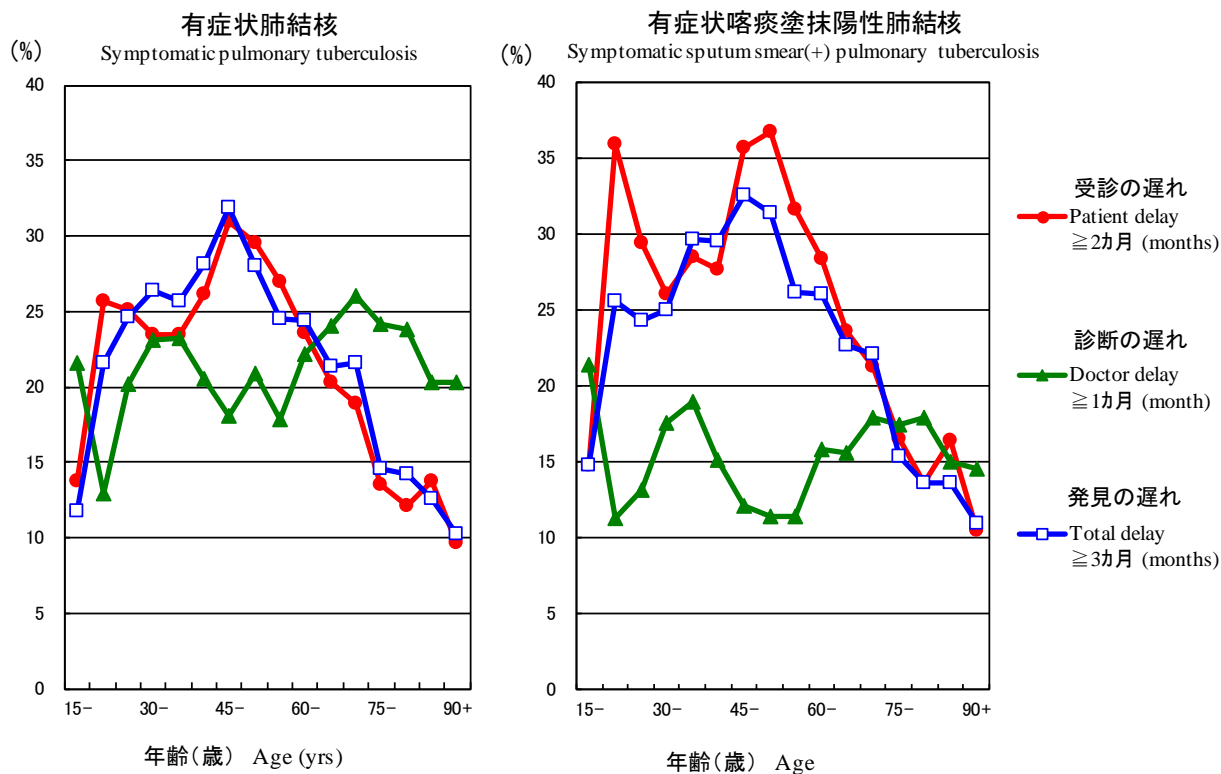


図2 新登録有症状肺結核中年齢5歳階層別発見の遅れの割合、2013年

Fig.2 Proportion of patient delay, doctor delay and total delay among symptomatic pulmonary tuberculosis patients by 5-year age group, in 2013

受診の遅れ:「発病の時期」(結核の症状が初めて自覚された時期)から「初診の時期」(結核による症状を訴えて初めて医療機関を受診した時期)までの期間が2ヵ月以上である場合。

Patient delay : The amount of time between the onset of symptoms and the initial consultation visit to a medical institution is 2 months or more.

診断の遅れ:「初診の時期」から「診断の時期」(結核と診断された時期)までの期間が1ヵ月以上である場合。

Doctor delay : The amount of time between the initial consultation visit of the patient to a medical institution and the diagnosis of tuberculosis is 1 month or more.

発見の遅れ:「発病の時期」から「診断の時期」までの期間が3ヵ月以上である場合。

Total delay : The amount of time between the onset of symptoms and the diagnosis of tuberculosis is 3 months or more.

表1 新登録結核患者の発見方法、1998～2013年

Table1 Proportion of mode of detection among newly notified tuberculosis patients, 1998-2013

年	新登録患者	個別健診	定期健診				接触者健診		医療機関			その他	不明
			Mass screening				Contact examination		Medical institutions				
Year	Newly notified TB patients	Individual medical checkup	学校	住民	職場	施設	家族	その他	有症状受診(*1)	入院中	通院中	Others	Unknown
	<i>n</i>	%	%	%	%	%	%	%	Outpatients with TB symptoms(*1) %	Inpatients with other diseases %	Outpatients with other diseases %	%	%
1998	41,033	2.6	1.0	3.8	7.6	0.4	1.5	1.2	78.3	-	-	2.7	1.0
1999	43,818	2.6	0.9	3.4	7.6	0.5	1.5	1.4	78.5	-	-	2.9	0.8
2000	39,384	2.3	1.1	3.6	8.3	0.5	1.4	1.2	78.3	-	-	2.8	0.5
2001	35,489	2.4	1.1	3.5	8.2	0.5	1.4	1.3	78.6	-	-	2.7	0.3
2002	32,828	2.1	1.1	3.2	8.0	0.6	1.4	1.5	78.7	-	-	2.9	0.5
2003	31,638	2.0	1.0	2.8	7.7	0.6	1.4	1.4	79.7	-	-	2.9	0.5
2004	29,736	2.1	1.0	2.8	7.4	0.6	1.3	1.6	79.6	-	-	2.8	0.9
2005	28,319	2.1	0.9	2.4	7.3	0.5	1.4	1.7	80.4	-	-	2.4	0.9
2006	26,384	2.1	0.9	2.3	7.6	0.6	1.3	1.2	81.2	-	-	2.5	0.5
2007	25,311	2.1	0.9	2.5	7.6	0.6	1.4	1.5	67.2	8.0	6.4	1.3	0.6
2008	24,760	2.6	0.8	2.0	7.6	0.6	1.3	1.7	62.0	10.8	8.5	1.3	1.0
2009	24,170	2.5	0.8	2.3	7.2	0.6	1.3	1.3	61.5	11.4	9.2	1.2	0.6
2010	23,261	2.2	1.0	2.3	7.0	0.6	1.3	1.5	59.8	12.0	9.9	1.4	1.0
2011	22,681	2.1	0.8	2.2	6.8	0.6	1.6	2.1	58.1	12.9	11.1	1.5	0.4
2012	21,283	1.9	0.8	2.3	6.7	0.6	1.5	1.8	57.7	13.8	10.9	1.7	0.4
2013	20,495	2.0	0.8	2.2	6.1	0.4	1.5	1.6	58.4	13.4	11.3	1.6	0.5

TB: tuberculosis

*1 有症状:咳・痰・血痰・喀血等の「呼吸器症状」や、喘鳴、胸痛、背部痛、息切れ、発熱、寝汗、全身倦怠、体重減少等の「その他の症状」を有する場合。

TB symptoms: Respiratory symptoms such as cough, sputum expectoration, bloody sputum, and hemoptysis; and other symptoms such as wheezing, chest pain, back pain, dyspnea, fever, night sweating, fatigue tendency, and weight loss.

旧表 新登録結核患者の発見方法、年齢階層別、2013年
Previous table Proportion of mode of detection among newly notified TB patients by age group, 2013

年齢階層 Age groups	新登録患者 Newly notified TB patients	個別健診 Individual medical checkup	定期健診 Mass screening				接触者健診 Contact examination		医療機関 Medical institutions			その他 Others	不明 Unknown
			学校 Schools	住民 Residents	職場 Employees	施設 Facilities	家族 Family	その他 Others	有症状受診 Outpatients with TB symptoms(*1)	入院中 Inpatients with other diseases	通院中 Outpatients with other diseases		
全結核 All forms of TB													
総数 Total	20,495	2.0	0.8	2.2	6.1	0.4	1.5	1.6	58.4	13.4	11.3	1.6	0.5
0-14	66	0.0	6.1	0.0	0.0	0.0	50.0	3.0	30.3	3.0	1.5	6.1	0.0
15-19	165	2.4	23.6	0.0	4.2	0.0	13.3	4.8	41.8	3.6	1.2	4.2	0.6
20-24	536	2.2	14.7	0.0	17.5	0.2	2.4	4.7	51.5	0.7	0.7	4.7	0.6
25-29	660	1.8	6.1	0.6	24.2	0.2	3.3	4.8	54.2	0.6	1.5	1.5	1.1
30-34	641	2.3	0.9	0.6	23.1	0.0	3.9	3.9	57.9	2.3	2.2	1.7	1.1
35-39	676	4.9	0.4	0.6	21.3	0.1	2.4	3.6	59.6	1.8	2.4	2.2	0.7
40-44	791	4.4	0.0	1.6	21.5	0.9	2.3	3.9	52.7	4.0	5.8	2.0	0.8
45-49	705	2.8	0.0	2.1	18.7	0.6	3.0	3.7	55.2	4.4	6.0	2.4	1.1
50-54	779	3.7	0.1	2.3	18.4	0.4	2.3	2.7	55.8	5.5	6.0	2.6	0.1
55-59	886	2.0	0.0	2.7	11.3	0.1	2.9	2.6	59.5	6.3	9.0	2.9	0.6
60-64	1,363	2.6	0.0	3.4	6.2	0.3	1.7	2.6	58.1	10.9	11.5	2.1	0.5
65-69	1,470	2.6	0.0	4.1	2.2	0.3	1.2	1.2	57.0	12.5	16.6	1.7	0.4
70-74	1,852	1.9	0.0	3.7	1.1	0.3	1.0	0.9	58.2	13.6	17.3	1.3	0.6
75-79	2,507	1.8	0.0	3.0	0.3	0.4	0.6	0.5	57.1	16.8	17.9	1.0	0.6
80-84	3,082	1.2	0.0	2.3	0.0	0.4	0.4	0.5	61.6	18.9	13.2	1.2	0.3
85-89	2,774	1.2	0.0	1.5	0.0	0.6	0.3	0.3	61.2	21.5	11.9	1.1	0.3
90+	1,542	0.8	0.0	0.7	0.0	1.0	0.2	0.7	63.5	23.1	8.7	0.9	0.4
(再掲) 喀痰塗抹陽性肺結核 (Re-count) Sputum smear positive pulmonary TB													
総数 Total	8,119	1.5	0.3	1.7	3.6	0.4	0.6	0.5	65.9	14.1	10.1	1.0	0.5
0-14	0	-	-	-	-	-	-	-	-	-	-	-	-
15-19	49	4.1	12.2	0.0	2.0	0.0	2.0	2.0	73.5	2.0	2.0	0.0	0.0
20-24	137	0.7	9.5	0.0	10.2	0.0	0.7	1.5	73.0	0.7	0.0	2.9	0.7
25-29	220	1.8	1.8	0.9	16.8	0.5	1.4	0.5	72.3	0.0	2.3	0.9	0.9
30-34	195	3.1	0.5	0.0	10.8	0.0	2.6	0.5	74.9	2.1	2.6	0.5	2.6
35-39	217	1.4	0.0	0.0	15.7	0.0	0.9	0.5	76.0	0.0	2.3	1.8	1.4
40-44	264	4.2	0.0	1.9	15.5	0.4	0.8	1.5	63.6	3.8	6.1	1.1	1.1
45-49	259	2.3	0.0	0.8	15.1	0.8	0.8	0.0	71.0	5.0	2.7	0.8	0.8
50-54	305	2.3	0.0	1.0	13.8	0.3	0.7	1.0	68.2	5.9	4.3	2.6	0.0
55-59	358	1.1	0.0	2.5	6.4	0.0	1.1	0.6	68.4	5.0	10.9	3.6	0.3
60-64	579	1.6	0.0	2.2	4.7	0.2	0.9	1.2	66.8	13.0	7.6	1.4	0.5
65-69	540	1.7	0.0	2.6	1.1	0.0	0.7	0.0	66.5	12.2	13.5	1.3	0.4
70-74	711	1.4	0.0	2.7	0.6	0.3	0.7	0.6	64.0	13.4	15.0	0.7	0.7
75-79	971	1.1	0.0	2.1	0.1	0.4	0.2	0.2	62.3	17.2	15.4	0.6	0.3
80-84	1,318	1.0	0.0	2.0	0.0	0.3	0.4	0.2	64.4	18.9	11.7	0.6	0.5
85-89	1,292	1.3	0.0	1.3	0.0	0.8	0.2	0.5	63.8	20.9	10.5	0.6	0.1
90+	704	0.9	0.0	0.9	0.0	0.9	0.0	0.4	65.2	22.6	8.7	0.6	0.0

TB: tuberculosis

*1 有症状: 咳・痰・血痰・喀血等の「呼吸器症状」や、喘鳴、胸痛、背部痛、息切れ、発熱、寝汗、全身倦怠、体重減少等の「その他の症状」を有する場合。

TB symptoms: Respiratory symptoms such as cough, sputum expectoration, bloody sputum, and hemoptysis; and other symptoms such as wheezing, chest pain, back pain, dyspnea, fever, night sweating, fatigue tendency, and weight loss.

旧表改訂 新登録結核患者数、職業・性・年齢階層別、2013年
Previous table Number of newly notified TB patients by occupation, sex and age group, 2013

性/年齢	総数	接客業	看護師 /保健師	医師	他医療 従事者	教員/ 保育士	生徒/ 学生	他常用 勤労者	他臨時 /日雇	他自営/ 自由業	家事従 事者	保育園児/ 幼稚園児/ 他の乳幼児	無職/ 他	不明
Sex/Age group	Total	Service workers	Nurses/P ublic health nurses	Medical doctors	Other medical workers	Teachers/ Nursery nurses	Pupils/St udents	Other regular workers	Other temporar y/daily workers	Other self- employed	Housekee pers	Infants/ Little children	Jobless/ Others	Unknown
男 Male	12,504	298	10	53	98	46	288	2,083	428	721	7	13	8,123	336
0-14	31	-	-	-	-	-	17	-	-	-	-	13	1	-
15-19	85	-	-	-	1	-	60	10	1	1	-	-	9	3
20-24	303	14	1	-	5	4	140	94	19	4	-	-	20	2
25-29	329	24	-	6	14	3	60	153	22	7	-	-	27	13
30-39	711	73	6	8	25	9	8	393	38	44	-	-	87	20
40-49	929	48	2	9	19	9	1	474	55	83	-	-	199	30
50-59	1,150	58	1	10	18	13	1	483	85	107	1	-	326	47
60-69	2,007	56	-	7	13	3	-	372	132	218	1	-	1,131	74
70-79	2,811	24	-	8	1	4	1	87	73	170	2	-	2,359	82
80+	4,148	1	-	5	2	1	-	17	3	87	3	-	3,964	65
女 Female	7,991	248	224	13	183	49	192	599	255	154	450	18	5,447	159
0-14	35	-	-	-	-	-	17	-	-	-	-	18	-	-
15-19	80	4	-	-	1	-	58	4	2	-	-	-	9	2
20-24	233	20	12	-	5	5	83	52	19	2	6	-	22	7
25-29	331	39	28	4	25	5	23	96	20	4	27	-	46	14
30-39	606	52	53	4	42	13	11	152	53	13	93	-	104	16
40-49	567	39	74	3	40	10	-	135	53	19	66	-	110	18
50-59	515	41	46	1	51	12	-	87	44	20	41	-	160	12
60-69	826	34	8	-	16	4	-	57	47	39	98	-	493	30
70-79	1,548	17	2	-	1	-	-	14	14	34	83	-	1,355	28
80+	3,250	2	1	1	2	-	-	2	3	23	36	-	3,148	32

旧表 職業別、20～59歳新登録肺結核患者の発見方法別割合、2013年
Previous table Proportion of mode of detection among newly notified pulmonary TB patients aged 20-59 years by occupation, 2013

	肺結核 Pulmonary TB patients	個別健 診 Individual medical checkup	定期健診 Mass screening			接触者健診 Contact examination		医療機関 Clinics/Hospitals			その他/ 不明 Others/Un known
			住民 Residents	職場 Employe es	学校/施 設 Schools/F acilities	家族 Family	その他 Others	有症状 受診(*2) Outpatient s with TB symptoms	入院中 with other diseases Inpatients	通院中 with other diseases Outpatients	
総数 Total	4,493	3.5	1.6	23.1	3.0	3.2	4.3	51.1	3.0	3.9	3.3
接客業 Service workers	324	2.2	1.5	19.8	0.3	4.0	1.9	60.8	1.9	5.6	2.2
医療関係者 Medical workers(*1)	438	2.3	0.5	41.3	0.5	2.1	13.5	34.0	0.7	2.5	2.7
教員・保育士 Teachers/Nursery nurses	64	6.3	3.1	21.9	3.1	9.4	6.3	40.6	0.0	4.7	4.7
学生 Students	256	2.7	1.2	2.3	42.2	1.6	6.3	32.8	0.4	0.4	10.2
他の常用勤労者 Other regular workers	1,734	2.5	0.7	38.2	0.2	3.0	3.7	45.6	2.0	2.7	1.4
他の臨時・日雇 Other temporary/daily workers	314	3.5	1.3	16.6	0.6	2.9	6.4	60.2	3.2	2.9	2.5
他の自営自由業 Other self-employed	248	4.8	2.4	8.1	0.0	4.0	0.8	68.1	4.4	5.2	2.0
家事 Housekeepers	176	6.8	4.0	3.4	0.0	3.4	0.6	68.2	2.3	7.4	4.0
無職 Jobless/Others	818	6.0	3.8	2.8	1.6	3.9	2.1	60.9	7.7	6.6	4.6
不明 Unknown	121	0.8	0.8	5.8	0.8	4.1	2.5	58.7	3.3	6.6	16.5

*1 医療関係者：看護師・保健師・助産師、医師、その他医療職含む。

Medical workers include nurses, public health nurses, medical doctors and dentists, physical therapists, occupational therapists, medical technologists, radiographers, and co-medicals.

*2 有症状：咳・痰・血痰・喀血等の「呼吸器症状」や、喘鳴、胸痛、背部痛、息切れ、発熱、寝汗、全身倦怠、体重減少等の「その他の症状」を有する場合。
TB symptoms: Respiratory symptoms such as cough, sputum expectoration, bloody sputum, and hemoptysis; and other symptoms such as wheezing, chest pain, back pain, dyspnea, fever, night sweating, fatigue tendency, and weight loss.

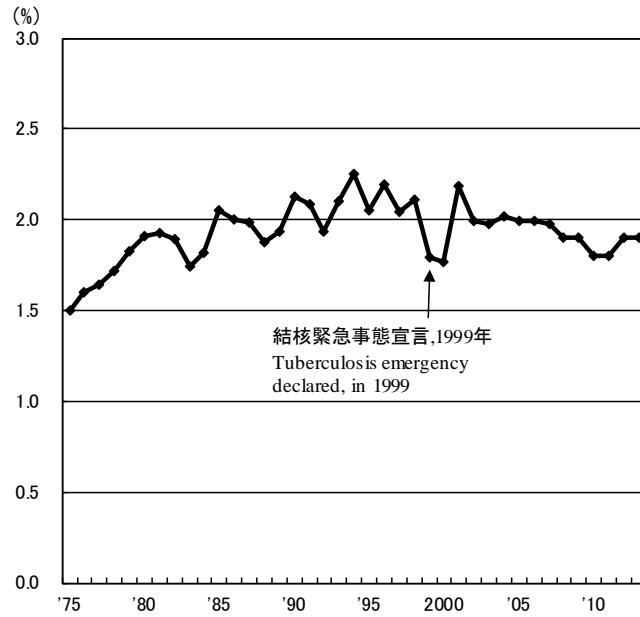
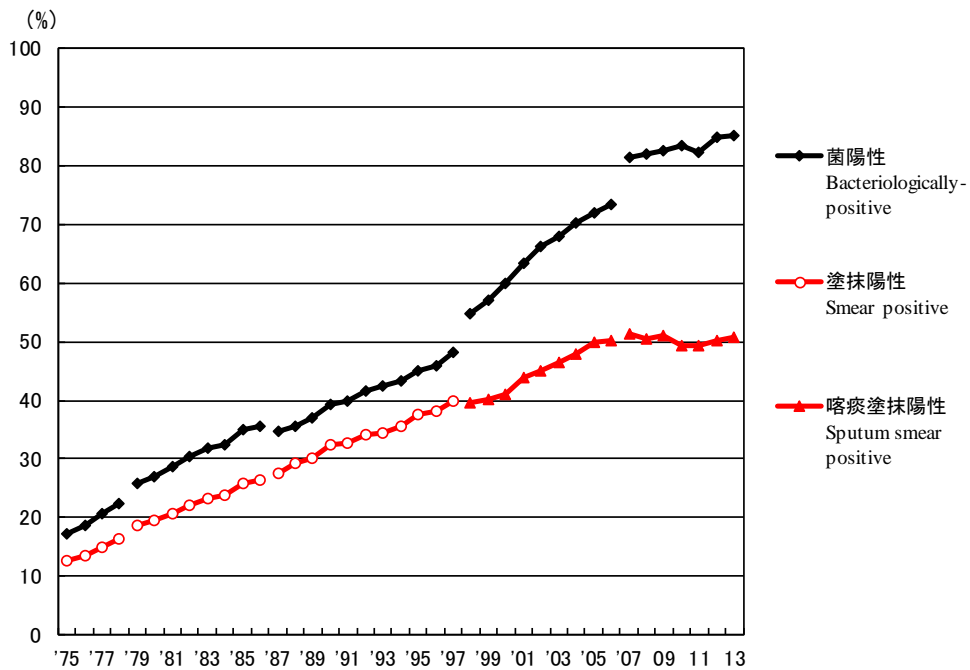
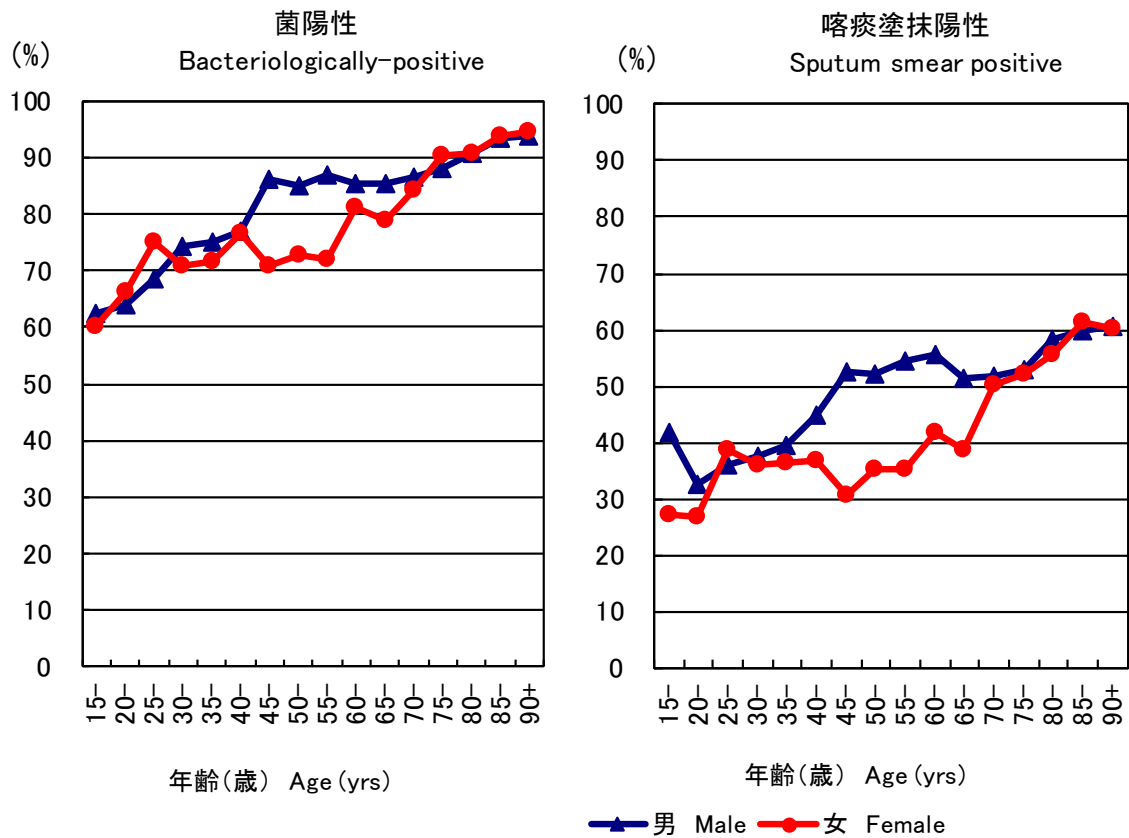


図3 新登録肺結核患者中胸部X線写真での広汎空洞型割合の推移、1975～2013年
 Fig.3 Proportion of far-advanced cavitory cases among newly notified pulmonary Tuberculosis patients, 1975-2013



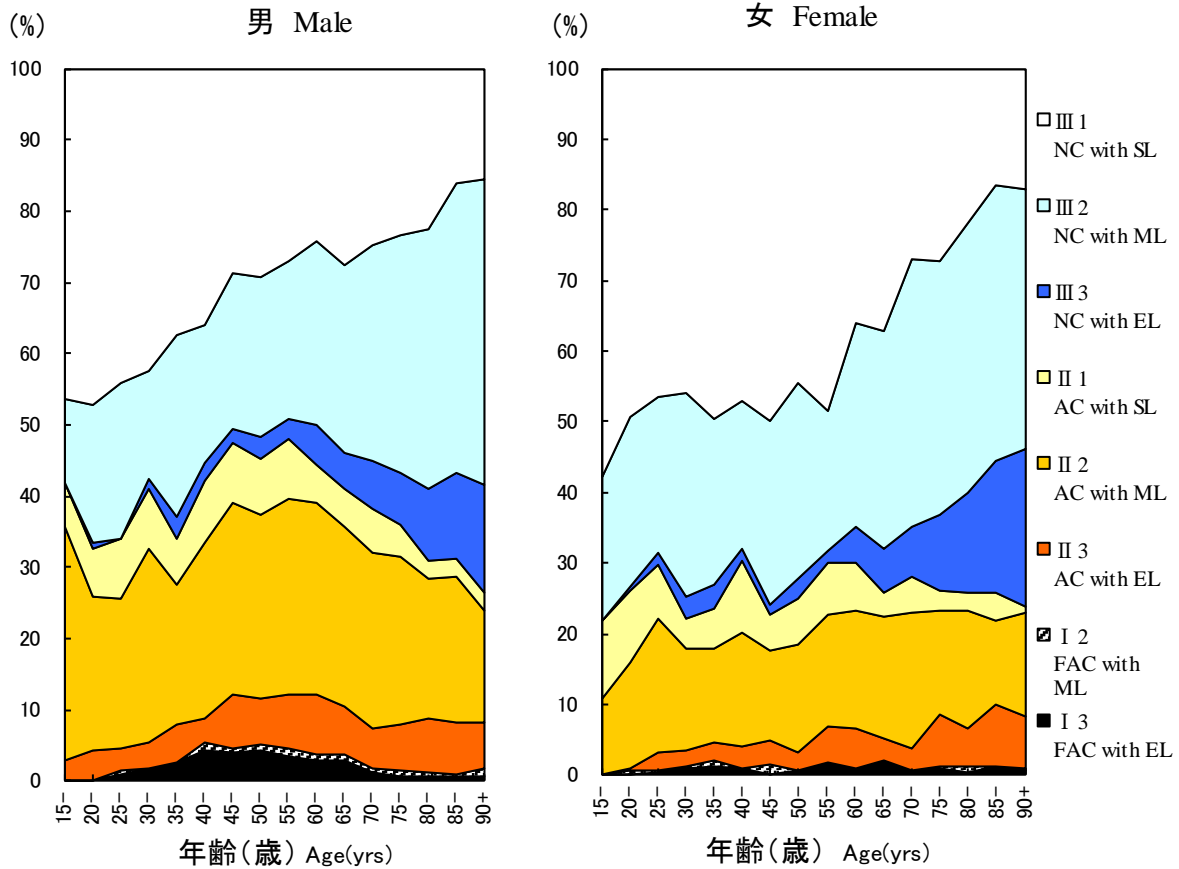
旧図 新登録肺結核患者中菌陽性割合の推移、1975～2013年
 Previous Fig. Proportion of bacteriologically confirmed cases among newly notified pulmonary tuberculosis patients, 1975-2013

資料と対象 Sources of information and subjects:
 結核登録者の定期報告 Annual tuberculosis reports from public health centers
 1975-1978: 全結核 All forms of tuberculosis
 1979-1986: 肺結核 Pulmonary tuberculosis
 電算化結核サーベイランスシステム Nationwide computerized tuberculosis surveillance system
 1987-1997: 肺結核 Pulmonary Tuberculosis
 1998-2006: 肺結核(活動性分類の変更) Pulmonary tuberculosis (New patient criteria for notification were applied)
 2007-2009: 肺結核(核酸増幅法項目の追加) Pulmonary tuberculosis (Item of nucleic acid amplification was added)



旧 図 新登録肺結核患者中菌陽性割合、性・年齢5歳階級別、2013年
Previous Fig.

Proportion of bacteriologically confirmed cases among newly notified pulmonary tuberculosis patients by sex and 5-year age group, 2013



旧図 新登録肺結核患者中胸部X線写真学会分類別所見割合, 性・年齢5歳階級別, 2013年
 Previous Fig. Proportion of cases classified by X-ray Gakkai classification by sex and 5-yearage group, 2013
 NC : Non-cavitory SL : Slight lesion AC : Advanced cavitory ML : Moderate lesion
 FAC: Far-advance cavitory EL : Extensive lesion

旧表 性・職業別、30~59歳新登録肺結核患者中有空洞あるいは／かつ喀痰塗抹陽性の割合、2013年
 Previous table Proportion of cavitory or/and sputum smear positive cases among newly notified pulmonary TB patients aged 30-59 years, 2013

	男 Male						女 Female							
	肺結核 Pulmonary TB	有空洞あるいは 喀痰塗抹陽性 Cavitory or sputum smear(+)			有空洞かつ 喀痰塗抹陽性 Cavitory and sputum smear(+)			肺結核 Pulmonary TB	有空洞あるいは 喀痰塗抹陽性 Cavitory or sputum smear(+)			有空洞かつ 喀痰塗抹陽性 Cavitory and sputum smear(+)		
		n	%	Ratio	n	%	Ratio		n	%	Ratio	n	%	Ratio
接客業 Service workers	148	100	67.6	1.6	69	46.6	2.5	104	55	52.9	1.6	13	12.5	1.4
医療職 Medical workers	82	35	42.7	1.0	15	18.3	1.0	267	88	33.0	1.0	24	9.0	1.0
教員・保育士 Teachers/ Nursery nurses	26	10	38.5	0.9	1	3.8	0.2	23	6	26.1	0.8	2	8.7	1.0
他の常用勤労者 Other regular workers	1,160	599	51.6	1.2	302	26.0	1.4	293	102	34.8	1.1	29	9.9	1.1
他の臨時・日雇 Other temporary/ daily workers	158	119	75.3	1.8	79	50.0	2.7	111	55	49.5	1.5	22	19.8	2.2
他の自営自由 Other self- employed	202	122	60.4	1.4	67	33.2	1.8	40	22	55.0	1.7	12	30.0	3.3
無職 Jobless	484	324	66.9	1.6	190	39.3	2.1	256	134	52.3	1.6	61	23.8	2.7
その他 Others	113	60	53.1	1.2	29	25.7	1.4	208	108	51.9	1.6	43	20.7	2.3
総数 Total	2,373	1,369	57.7		752	31.7		1,302	570	43.8		206	15.8	

その他:家事、学生、不明 Others:Houskeepers/ Students/ Unknown

Ratio: 医療職の割合に対するその他職業の割合の比 The ratio of each proportion to that of medical workers

【診断時病状 2】

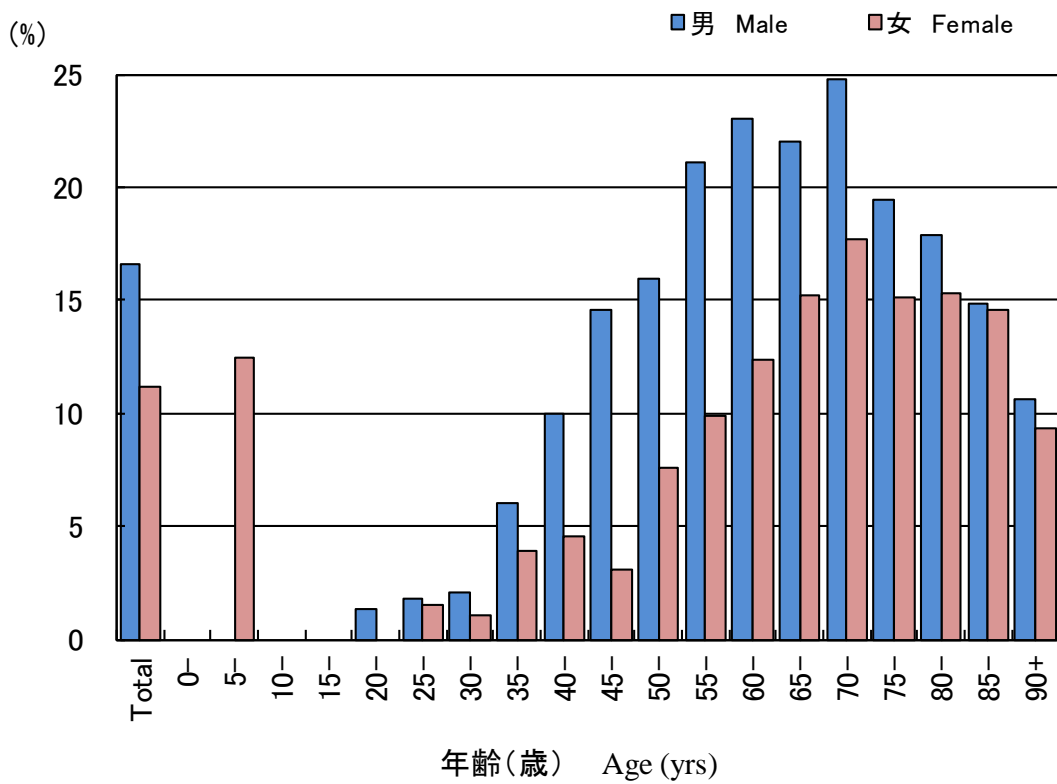


図4 新登録結核患者中「糖尿病合併あり」と報告された患者の割合、性・年齢階層別、2013年
 Fig.4 Proportion of newly notified tuberculosis patients with diabetes mellitus in each age-group by sex, 2013

表2 新登録結核患者中「HIV合併あり」と報告された患者数、性・年齢階層別、2013年および2007～2013年
 Table 2 Number of newly notified tuberculosis patients with HIV infection, by sex and age group, 2013 and 2007-2013

年齢階層 Age group	喀痰塗抹陽性 Sputum smear positive		他結核菌陽性 Other bacteriologically-positive		菌陰性結核 Bacteriologically-negative		肺外結核 Extra-pulmonary		総数 Total	
	男 M	女 F	男 M	女 F	男 M	女 F	男 M	女 F	男 M	女 F
2013年 2013 Calendar year										
総計 Total	15 (2)	1	9 (3)	1 (1)	4	0	17 (3)	3 (1)	45 (8)	5 (2)
0-19	0	0	0	0	0	0	0	0	0	0
20-24	0	0	0	0	0	0	0	0	0	0
25-29	1	0	0	0	0	0	0	1 (1)	1	1 (1)
30-34	1	0	1	0	0	0	6 (3)	0	8 (3)	0
35-39	2 (1)	0	0	1 (1)	0	0	1	1	3 (1)	2 (1)
40-44	4 (1)	0	2	0	0	0	4	0	10 (1)	0
45-49	1	0	3 (3)	0	1	0	3	1	8 (3)	1
50-54	1	0	2	0	2	0	0	0	5	0
55-59	2	0	1	0	0	0	1	0	4	0
60-64	1	0	0	0	0	0	0	0	1	0
65-69	0	0	0	0	1	0	1	0	2	0
70-74	0	0	0	0	0	0	1	0	1	0
75-79	1	0	0	0	0	0	0	0	1	0
80+	1	1	0	0	0	0	0	0	1	1
2007～2013年 2007-2013 Calendar year										
総計 Total	123 (12)	21 (13)	64 (13)	9 (6)	35 (4)	5 (3)	137 (24)	22 (11)	359 (53)	57 (33)
0-19	1 (1)	0	0	0	0	0	2	0	3 (1)	0
20-24	3 (2)	0	1	0	1 (1)	1 (1)	1	1	6 (3)	2 (1)
25-29	7 (3)	3 (2)	1 (1)	1 (1)	1 (1)	0	8 (1)	1 (1)	17 (6)	5 (4)
30-34	10 (3)	4 (4)	6	3 (2)	1	1 (1)	19 (7)	4 (2)	36 (10)	12 (9)
35-39	18 (1)	3 (3)	14 (4)	2 (2)	5	0	21 (3)	3 (2)	58 (8)	8 (7)
40-44	25 (1)	3 (3)	12 (4)	0	6 (1)	3 (1)	32 (10)	5 (4)	75 (16)	11 (8)
45-49	12 (1)	1 (1)	7 (3)	1 (1)	4 (1)	0	26 (3)	1	49 (8)	3 (2)
50-54	10	0	10 (1)	0	5	0	6	0	31 (1)	0
55-59	7	0	3	0	4	0	8	2 (2)	22	2 (2)
60-64	10	1	5	0	3	0	4	0	22	1
65-69	9	0	2	0	3	0	4	1	18	1
70-74	2	2	1	0	1	0	2	1	6	3
75-79	3	0	0	0	1	0	3	2	7	2
80+	6	4	2	2	0	0	1	1	9	7

(): 外国人患者の再掲 Re-count of foreigners

HIV : Human Immunodeficiency Virus. M : male patients, F : female patients.

表3 新登録肺結核患者から分離培養された結核菌の抗結核薬剤感受性検査結果、治療歴別、2007～2013年
Table 3 Drug susceptibility test results among newly notified pulmonary tuberculosis patients, by treatment history, 2007-2013

治療歴、菌検査状況、耐性状況 Treatment history, Culture examination results, Drug susceptibility test results	2007				2008				2009				2010				2011				2012				2013			
	n	%	%	%	n	%	%	%	n	%	%	%	n	%	%	%	n	%	%	%	n	%	%	%	n	%	%	%
総数 Total																												
肺結核 Pulmonary tuberculosis	19,893	100%			19,393	100%			18,912	100%			18,328	100%			17,519	100%			16,432	100%			15,972	100%		
培養結果把握 Culture result obtained	12,690	63.8			12,087	62.3			14,146	74.8			14,656	80.0			13,902	79.4			14,058	85.6			13,311	83.3		
培養陽性 Culture positive	9,983	50.2	100%		9,480	48.9	100%		10,902	57.6	100%		11,495	62.7	100%		10,915	62.3	100%		11,261	68.5	100%		10,523	65.9	100%	
感受性結果把握 DST result obtained	4,173		41.8	100%	4,332		45.7	100%	6,920		63.5	100%	8,380		72.9	100%	8,046		73.7	100%	8,347		74.1	100%	7,701		73.2	100%
多剤耐性 MDR	50			1.2	48			1.1	56			0.8	68			0.8	60			0.7	60			0.7	47			0.6
INH 耐性 Any INH resistance	258			6.2	211			4.9	346			5.0	396			4.7	386			4.8	380			4.6	369			4.8
RFP耐性 Any RFP resistance	72			1.7	64			1.5	80			1.2	95			1.1	86			1.1	73			0.9	64			0.8
1剤以上耐性 Any resistance*	628			15.0	550			12.7	903			13.0	1,025			12.2	998			12.4	810			9.7	757			9.8
初回治療 New treatment																												
肺結核 Pulmonary tuberculosis	18,220	100%			17,515	100%			17,125	100%			16,481	100%			15,761	100%			15,040	100%			14,727	100%		
培養結果把握 Culture result obtained	11,602	63.7			10,845	61.9			12,801	74.8			13,164	79.9			12,454	79.0			12,882	85.7			12,279	83.4		
培養陽性 Culture positive	9,148	50.2	100%		8,540	48.8	100%		9,899	57.8	100%		10,374	62.9	100%		9,800	62.2	100%		10,379	69.0	100%		9,782	66.4	100%	
感受性結果把握 DST result obtained	3,752			41.0	3,885			45.5	6,276			63.4	7,553			72.8	7,226			73.7	7,676			74.0	7,166			73.3
多剤耐性 MDR	23			0.6	28			0.7	34			0.5	38			0.5	38			0.5	38			0.5	31			0.4
INH 耐性 Any INH resistance	194			5.2	163			4.2	276			4.4	311			4.1	297			4.1	310			4.0	326			4.5
RFP耐性 Any RFP resistance	36			1.0	39			1.0	50			0.8	56			0.7	57			0.8	46			0.6	42			0.6
1剤以上耐性 Any resistance*	516			13.8	470			12.1	780			12.4	876			11.6	858			11.9	712			9.3	680			9.5
再治療 Re-treatment																												
肺結核 Pulmonary tuberculosis	1,409	100%			1,542	100%			1,468	100%			1,461	100%			1,351	100%			1,094	100%			1,013	100%		
培養結果把握 Culture result obtained	946	67.1			1,059	68.7			1,134	77.2			1,217	83.3			1,151	85.2			959	87.7			852	84.1		
培養陽性 Culture positive	713	50.6	100%		779	50.5	100%		830	56.5	100%		885	60.6	100%		863	63.9	100%		693	63.3	100%		586	57.8	100%	
感受性結果把握 DST result obtained	376			52.7	391			50.2	559			67.3	694			78.4	661			76.6	555			80.1	435			74.2
多剤耐性 MDR	27			7.2	20			5.1	20			3.6	27			3.9	22			3.3	22			4.0	16			3.7
INH 耐性 Any INH resistance	63			16.8	48			12.3	65			11.6	79			11.4	80			12.1	67			12.1	35			8.0
RFP耐性 Any RFP resistance	36			9.6	24			6.1	28			5.0	36			5.2	28			4.2	26			4.7	22			5.1
1剤以上耐性 Any resistance*	107			28.5	75			19.2	112			20.0	132			19.0	122			18.5	94			16.9	65			14.9
治療歴不明 No information about treatment history																												
肺結核 Pulmonary tuberculosis	264	100%			336	100%			319	100%			386	100%			407	100%			298	100%			232	100%		
培養結果把握 Culture result obtained	142	53.8			183	54.5			211	66.1			275	71.2			297	73.0			217	72.8			180	77.6		
培養陽性 Culture positive	122	46.2	100%		161	47.9	100%		173	54.2	100%		236	61.1	100%		252	61.9	100%		189	63.4	100%		155	66.8	100%	
感受性結果把握 DST result obtained	45			36.9	56			34.8	85			49.1	133			56.4	159			63.1	116			61.4	100			64.5
多剤耐性 MDR	0			0.0	0			0.0	2			2.4	3			2.3	0			0.0	0			0.0	0			0.0
INH 耐性 Any INH resistance	1			2.2	0			0.0	5			5.9	6			4.5	9			5.7	3			2.6	8			8.0
RFP耐性 Any RFP resistance	0			0.0	1			1.8	2			2.4	3			2.3	1			0.6	1			0.9	0			0.0
1剤以上耐性 Any resistance*	5			11.1	5			8.9	11			12.9	17			12.8	18			11.3	4			3.4	12			12.0

DST: Drug susceptibility test MDR: Multi-drug resistant, i.e., resistant to at least INH and RFP INH: isoniazid RFP: rifampicin

感受性結果は重複あり Cases having drug resistance are counted independently by drug.

*: 2012年以降はINH, RFP, SM EBの4剤のうちのいずれかに耐性

旧表 新登録肺結核患者の薬剤感受性検査結果、性・年齢別、2013年および2007～2013年

Previous table Drug susceptibility test results among newly notified pulmonary tuberculosis patients, by sex and age group, 2013 and 2007—2013

年齢 Age group	総数 Total										初回治療(再掲) New treatment (Re-count)									
	男 Male					女 Female					男 Male					女 Female				
	感受性結果把握 DST result obtained	多剤耐性 MDR	INH耐性 Any INH resistance	RFP耐性 Any RFP resistance	1剤以上耐性* Any resistance	感受性結果把握 DST result obtained	多剤耐性 MDR	INH耐性 Any INH resistance	RFP耐性 Any RFP resistance	1剤以上耐性* Any resistance	感受性結果把握 DST result obtained	多剤耐性 MDR	INH耐性 Any INH resistance	RFP耐性 Any RFP resistance	1剤以上耐性* Any resistance	感受性結果把握 DST result obtained	多剤耐性 MDR	INH耐性 Any INH resistance	RFP耐性 Any RFP resistance	1剤以上耐性* Any resistance
2013年 2013 Calendar year																				
総数 Total	4,995	34	249	47	515	2,706	13	120	17	242	4,615	20	219	29	462	2,551	11	107	13	218
0-19	33	1	4	1	9	29	1	3	1	6	32	0	3	0	8	28	1	3	1	6
20-29	220	5	20	6	30	213	5	20	5	42	211	5	19	6	29	206	3	18	3	39
30-39	285	1	19	1	36	223	3	18	3	28	275	1	19	1	35	215	3	16	3	26
40-49	392	2	21	4	55	191	1	8	1	16	376	1	19	3	52	182	1	7	1	14
50-59	523	5	27	8	66	166	2	5	4	17	484	3	25	4	60	157	2	5	3	16
60-69	851	4	44	8	103	255	0	14	0	30	792	0	37	3	91	243	0	14	0	28
70-79	1,096	8	59	9	114	481	0	21	2	47	1,010	5	50	6	102	435	0	20	1	42
80+	1,595	8	55	10	102	1,148	1	31	1	56	1,435	5	47	6	85	1,085	1	24	1	47
2007～2013年 2007-2013 Calendar year																				
総数 Total	31,854	252	1,591	356	3,908	16,045	137	757	178	1,765	28,604	151	1,269	218	3,359	14,930	79	610	108	1,535
0-19	207	6	19	6	44	202	2	16	2	42	201	4	17	4	42	191	2	14	2	38
20-29	1,580	29	108	38	275	1,360	34	113	43	242	1,512	23	94	31	259	1,291	23	98	30	220
30-39	2,086	15	136	24	319	1,582	19	101	28	229	1,969	11	126	20	298	1,512	14	89	19	207
40-49	2,618	21	140	33	378	1,223	15	61	22	170	2,447	13	122	21	338	1,154	9	53	15	155
50-59	3,962	38	219	59	594	1,046	13	48	19	124	3,649	23	187	36	531	989	5	35	10	108
60-69	5,832	41	309	68	816	1,551	12	89	13	209	5,285	23	253	37	702	1,450	6	69	6	177
70-79	7,060	61	347	76	829	3,063	20	134	25	324	6,190	31	246	39	673	2,782	8	105	12	276
80+	8,509	41	313	52	653	6,018	22	195	26	425	7,351	23	224	30	516	5,561	12	147	14	354
2007～2012年 2007-2012 Calendar year																				
総数 Total	100%	0.8	5.0	1.1	12.3	100%	0.9	4.7	1.1	11.0	100%	0.5	4.4	0.8	11.7	100%	0.5	4.1	0.7	10.3
0-19	100	2.9	9.2	2.9	21.3	100	1.0	7.9	1.0	20.8	100	2.0	8.5	2.0	20.9	100	1.0	7.3	1.0	19.9
20-29	100	1.8	6.8	2.4	17.4	100	2.5	8.3	3.2	17.8	100	1.5	6.2	2.1	17.1	100	1.8	7.6	2.3	17.0
30-39	100	0.7	6.5	1.2	15.3	100	1.2	6.4	1.8	14.5	100	0.6	6.4	1.0	15.1	100	0.9	5.9	1.3	13.7
40-49	100	0.8	5.3	1.3	14.4	100	1.2	5.0	1.8	13.9	100	0.5	5.0	0.9	13.8	100	0.8	4.6	1.3	13.4
50-59	100	1.0	5.5	1.5	15.0	100	1.2	4.6	1.8	11.9	100	0.6	5.1	1.0	14.6	100	0.5	3.5	1.0	10.9
60-69	100	0.7	5.3	1.2	14.0	100	0.8	5.7	0.8	13.5	100	0.4	4.8	0.7	13.3	100	0.4	4.8	0.4	12.2
70-79	100	0.9	4.9	1.1	11.7	100	0.7	4.4	0.8	10.6	100	0.5	4.0	0.6	10.9	100	0.3	3.8	0.4	9.9
80+	100	0.5	3.7	0.6	7.7	100	0.4	3.2	0.4	7.1	100	0.3	3.0	0.4	7.0	100	0.2	2.6	0.3	6.4

DST: Drug susceptibility test. MDR: Multi-drug resistance, i.e., resistant to at least INH and RFP. INH: Isoniazid. RFP: Rifampicin.

*: 2012年以降はINH, RFP, SM EBの4剤のうちのいずれかに耐性

旧表 新登録肺結核患者の薬剤感受性検査結果および耐性率、性・年齢別、2007～2013年（再掲；外国人）

Previous table Drug susceptibility test results among newly notified pulmonary tuberculosis patients, by sex and age group, 2007-2013 (Re-count of foreigners)

年齢 Age group	総数 Total										初回治療(再掲) New treatment (Re-count)									
	男 Male					女 Female					男 Male					女 Female				
	感受性結果 把握 DST result obtained	多剤耐 性 MDR	INH耐 性 Any INH resista nce	RFP耐 性 Any RFP resista nce	1剤以 上耐性 * Any resista nce	感受性結果 把握 DST result obtained	多剤耐 性 MDR	INH耐 性 Any INH resista nce	RFP耐 性 Any RFP resista nce	1剤以 上耐性 * Any resista nce	感受性結果 把握 DST result obtained	多剤耐 性 MDR	INH耐 性 Any INH resista nce	RFP耐 性 Any RFP resista nce	1剤以 上耐性 * Any resista nce	感受性結果 把握 DST result obtained	多剤耐 性 MDR	INH耐 性 Any INH resista nce	RFP耐 性 Any RFP resista nce	1剤以 上耐性 * Any resista nce
2007～2013年	2007-2013 Calendar year																			
総数 Total	812	32	82	37	146	962	48	128	59	206	761	22	64	27	129	902	34	109	42	179
0-19	35	5	11	5	17	28	1	3	1	3	33	3	9	3	15	27	1	2	1	2
20-29	372	21	43	26	71	418	31	72	37	114	356	16	33	21	64	398	22	61	27	101
30-39	150	4	12	4	21	253	10	34	12	49	143	3	11	3	19	234	7	31	8	44
40-49	84	2	7	2	17	146	2	10	4	23	76	0	4	0	13	135	1	9	2	20
50-59	59	0	2	0	5	49	1	4	2	6	55	0	2	0	5	45	1	2	2	3
60-69	45	0	3	0	9	24	1	2	1	3	39	0	2	0	8	24	1	2	1	3
70-79	37	0	2	0	3	19	2	3	2	4	34	0	2	0	3	15	1	2	1	2
80+	30	0	2	0	3	25	0	0	0	4	25	0	1	0	2	24	0	0	0	4
2007～2013年	2007-2013 Calendar year																			
総数 Total	100%	3.9	10.1	4.6	18.0	100%	5.0	13.3	6.1	21.4	100%	2.9	8.4	3.5	17.0	100%	3.8	12.1	4.7	19.8
0-19	100	14.3	31.4	14.3	48.6	100	3.6	10.7	3.6	10.7	100	9.1	27.3	9.1	45.5	100	3.7	7.4	3.7	7.4
20-29	100	5.6	11.6	7.0	19.1	100	7.4	17.2	8.9	27.3	100	4.5	9.3	5.9	18.0	100	5.5	15.3	6.8	25.4
30-39	100	2.7	8.0	2.7	14.0	100	4.0	13.4	4.7	19.4	100	2.1	7.7	2.1	13.3	100	3.0	13.2	3.4	18.8
40-49	100	2.4	8.3	2.4	20.2	100	1.4	6.8	2.7	15.8	100	0.0	5.3	0.0	17.1	100	0.7	6.7	1.5	14.8
50-59	100	0.0	3.4	0.0	8.5	100	2.0	8.2	4.1	12.2	100	0.0	3.6	0.0	9.1	100	2.2	4.4	4.4	6.7
60-69	100	0.0	6.7	0.0	20.0	100	4.2	8.3	4.2	12.5	100	0.0	5.1	0.0	20.5	100	4.2	8.3	4.2	12.5
70-79	100	0.0	5.4	0.0	8.1	100	10.5	15.8	10.5	21.1	100	0.0	5.9	0.0	8.8	100	6.7	13.3	6.7	13.3
80+	100	0.0	6.7	0.0	10.0	100	0.0	0.0	0.0	16.0	100	0.0	4.0	0.0	8.0	100	0.0	0.0	0.0	16.7

DST: Drug susceptibility test. MDR: Multi-drug resistance, i.e., resistant to at least INH and RFP. INH: Isoniazid. RFP: Rifampicin.

*: 2012年はINH, RFP, SM EBの4剤のうちのいずれかに耐性