

【患者発見】

表1 新登録結核患者の発見方法、2007～2014年

Table1 Proportion of mode of detection among newly notified tuberculosis patients, 2007-2014

年 Year	新登録 患者 Newly notified TB patients	個別 健診 Individual medical checkup	定期健診 Mass screening				接触者健診 Contact examination				医療機関 Medical institutions				その他 Others		不明 Unknown										
			学校 Schools	住民 Residents	職場 Employees	施設 Facilities	家族 Family	その他 Others	有症状受診(*1) Outpatients with TB symptoms(*1)	入院中 Inpatients with other diseases	通院中 Outpatients with other diseases			n	%	n	%										
2007	25,311	537	2.1	217	0.9	636	2.5	1,931	7.6	145	0.6	355	1.4	370	1.5	16,997	67.2	2,031	8.0	1,611	6.4	340	1.3	141	0.6		
2008	24,760	639	2.6	195	0.8	486	2.0	1,877	7.6	144	0.6	325	1.3	410	1.7	15,347	62.0	2,681	10.8	2,100	8.5	316	1.3	240	1.0		
2009	24,170	611	2.5	197	0.8	550	2.3	1,749	7.2	136	0.6	324	1.3	311	1.3	14,864	61.5	2,752	11.4	2,220	9.2	301	1.2	155	0.6		
2010	23,261	507	2.2	244	1.0	544	2.3	1,618	7.0	128	0.6	313	1.3	350	1.5	13,901	59.8	2,792	12.0	2,305	9.9	333	1.4	226	1.0		
2011	22,681	470	2.1	188	0.8	497	2.2	1,531	6.8	126	0.6	354	1.6	482	2.1	13,177	58.1	2,916	12.9	2,515	11.1	330	1.5	95	0.4		
2012	21,283	409	1.9	163	0.8	498	2.3	1,424	6.7	121	0.6	315	1.5	374	1.8	12,284	57.7	2,941	13.8	2,312	10.9	357	1.7	85	0.4		
2013	20,495	413	2.0	172	0.8	455	2.2	1,246	6.1	89	0.4	314	1.5	333	1.6	11,978	58.4	2,745	13.4	2,306	11.3	336	1.6	108	0.5		
2014	19,615	344	1.8	201	1.0	404	2.1	1,221	6.2	92	0.5	303	1.5	333	1.7	11,441	58.3	2,591	13.2	2,210	11.3	328	1.7	147	0.7		
2014年																											
Age																											
0～9歳	32	0	0.0	0	0.0	0	0.0	0	0.0	0	0.0	17	53.1	0	0.0	13	40.6	0	0.0	0	0.0	1	3.1	1	3.1		
10～19	185	4	2.2	54	29.2	0	0.0	3	1.6	0	0.0	31	16.8	10	5.4	68	36.8	1	0.5	0	0.0	11	5.9	3	1.6		
20～29	1,188	24	2.0	131	11.0	4	0.3	247	20.8	6	0.5	29	2.4	58	4.9	602	50.7	16	1.3	15	1.3	50	4.2	6	0.5		
30～39	1,235	24	1.9	11	0.9	3	0.2	281	22.8	4	0.3	39	3.2	55	4.5	695	56.3	34	2.8	56	4.5	23	1.9	10	0.8		
40～49	1,440	44	3.1	3	0.2	28	1.9	292	20.3	6	0.4	42	2.9	57	4.0	799	55.5	51	3.5	76	5.3	26	1.8	16	1.1		
50～59	1,514	52	3.4	0	0.0	32	2.1	223	14.7	8	0.5	35	2.3	54	3.6	865	57.1	84	5.5	110	7.3	37	2.4	14	0.9		
60～69	2,597	62	2.4	1	0.0	74	2.8	146	5.6	9	0.3	39	1.5	42	1.6	1,499	57.7	257	9.9	393	15.1	51	2.0	24	0.9		
70～79	4,028	62	1.5	0	0.0	149	3.7	25	0.6	15	0.4	37	0.9	30	0.7	2,336	58.0	615	15.3	672	16.7	58	1.4	29	0.7		
80～89	5,753	56	1.0	1	0.0	98	1.7	4	0.1	29	0.5	31	0.5	19	0.3	3,542	61.6	1,135	19.7	747	13.0	63	1.1	28	0.5		
90～	1,643	16	1.0	0	0.0	16	1.0	0	0.0	15	0.9	3	0.2	8	0.5	1,022	62.2	398	24.2	141	8.6	8	0.5	16	1.0		

TB: tuberculosis

\*1 有症状: 咳・痰・血痰・咯血等の「呼吸器症状」や、喘鳴、胸痛、背部痛、息切れ、発熱、寝汗、全身倦怠、体重減少等の「その他の症状」を有する場合。

TB symptoms: Respiratory symptoms such as cough, sputum expectoration, bloody sputum, and hemoptysis; and other symptoms such as wheezing, chest pain, back pain, dyspnea, fever, night sweating, fatigue tendency, and weight loss.

総数には、その他集団検診 82名、登録中の健康診断 102名がある。

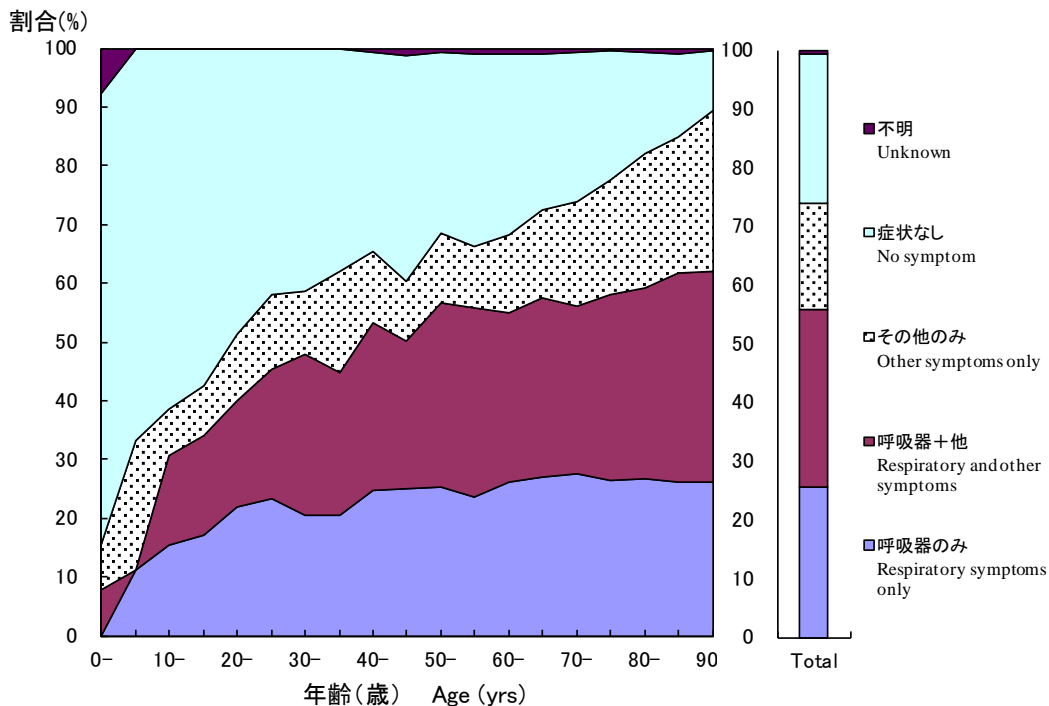


図1 新登録肺結核中 年齢5歳階層別症状の有無、2014年

Fig.1 Proportion of symptoms among newly notified pulmonary tuberculosis patients by 5-years age group, in 2014

呼吸器症状は咳、痰、血痰、咯血を含む。その他の症状は喘鳴、胸痛、背部痛、息切れ、発熱、寝汗、全身倦怠、体重減少を含む。

Respiratory symptoms include cough, sputum expectoration, bloody sputum, and hemoptysis. Other symptoms include wheezing, chest pain, back pain, dyspnea, fever, night sweating, fatigue tendency, and weight loss.

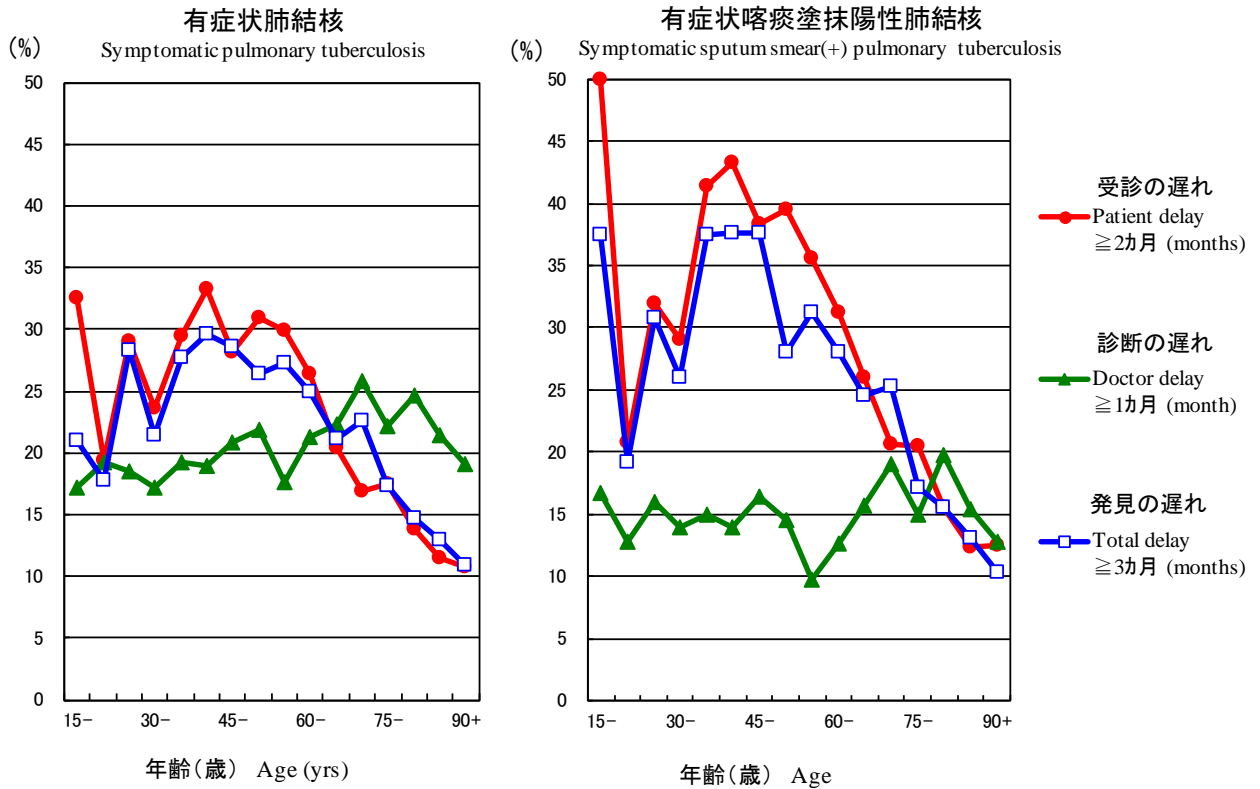


図2 新登録有症状肺結核中年齢5歳階層別発見の遅れの割合、2014年

Fig.2 Proportion of patient delay, doctor delay and total delay among symptomatic pulmonary tuberculosis patients by 5-year age group, in 2014

受診の遅れ:「発病の時期」(結核の症状が初めて自覚された時期)から「初診の時期」(結核による症状を訴えて初めて医療機関を受診した時期)までの期間が2ヵ月以上である場合。

Patient delay: time interval from the onset of symptoms to the first visit to a medical institution of 2 months or longer

診断の遅れ:「初診の時期」から「診断の時期」(結核と診断された時期)までの期間が1ヵ月以上である場合。

Doctor delay: time interval from the first visit to a medical institution to the diagnosis of tuberculosis of 1 month or longer

発見の遅れ:「発病の時期」から「診断の時期」までの期間が3ヵ月以上である場合。

Total delay: time interval from the onset of symptoms to the diagnosis of tuberculosis is 3 months or longer

旧表 新登録結核患者の発見方法、年齢階層別、2014年  
Previous table Proportion of mode of detection among newly notified TB patients by age group, 2014

年齢階層 Age groups	新登録患者 Newly notified TB patients	個別健診 Individual medical checkup	定期健診 Mass screening				接触者健診 Contact examination		医療機関 Medical institutions			その他 Others	不明 Unknown
			学校 Schools	住民 Residents	職場 Employees	施設 Facilities	家族 Family	その他 Others	有症状受診 Outpatients with TB symptoms(*1)	入院中 Inpatients with other diseases	通院中 Outpatients with other diseases		
<i>n</i>	%	%	%	%	%	%	%	%	%	%	%	%	
<b>全結核 All forms of TB</b>													
総数 Total	19,615	1.8	1.0	2.1	6.2	0.5	1.5	1.7	58.3	13.2	11.3	1.7	0.7
0-14	49	0.0	2.0	0.0	0.0	0.0	51.0	2.0	38.8	0.0	0.0	4.1	2.0
15-19	168	2.4	31.5	0.0	1.8	0.0	13.7	5.4	36.9	0.6	0.0	6.0	1.8
20-24	553	2.5	17.2	0.5	15.4	0.7	3.3	4.9	46.3	0.9	1.1	6.7	0.5
25-29	635	1.6	5.7	0.2	25.5	0.3	1.7	4.9	54.5	1.7	1.4	2.0	0.5
30-34	612	2.1	1.5	0.0	22.2	0.5	3.3	4.2	55.9	3.6	3.8	2.0	1.0
35-39	623	1.8	0.3	0.5	23.3	0.2	3.0	4.7	56.7	1.9	5.3	1.8	0.6
40-44	717	3.3	0.4	2.9	20.4	0.3	3.5	2.6	57.0	2.1	5.2	1.4	0.8
45-49	723	2.8	0.0	1.0	20.2	0.6	2.4	5.3	53.9	5.0	5.4	2.2	1.4
50-54	711	3.2	0.0	2.0	15.3	0.6	2.7	3.8	60.1	4.4	5.3	2.1	0.6
55-59	803	3.6	0.0	2.2	14.2	0.5	2.0	3.4	54.5	6.6	9.0	2.7	1.2
60-64	1,198	2.7	0.1	1.8	7.7	0.4	1.8	2.4	55.3	9.0	15.4	2.5	0.8
65-69	1,399	2.1	0.0	3.7	3.9	0.3	1.2	0.9	59.8	10.7	14.9	1.5	1.0
70-74	1,806	2.0	0.0	4.0	1.2	0.4	1.0	1.1	58.6	12.7	16.4	1.8	0.7
75-79	2,222	1.2	0.0	3.5	0.1	0.3	0.9	0.5	57.5	17.3	16.9	1.1	0.7
80-84	2,949	1.0	0.0	2.1	0.0	0.5	0.7	0.4	59.2	20.3	14.2	1.2	0.4
85-89	2,804	0.9	0.0	1.3	0.1	0.5	0.3	0.3	64.1	19.2	11.7	1.0	0.6
90+	1,643	1.0	0.0	1.0	0.0	0.9	0.2	0.5	62.2	24.2	8.6	0.5	1.0
<b>(再掲) 喀痰塗抹陽性肺結核 (Re-count) Sputum smear positive pulmonary TB</b>													
総数 Total	7,651	1.3	0.4	1.4	3.6	0.4	0.3	0.5	66.0	14.0	10.1	1.4	0.7
0-14	1	0.0	0.0	0.0	0.0	0.0	0.0	0.0	100.0	0.0	0.0	0.0	0.0
15-19	36	2.8	33.3	0.0	0.0	0.0	0.0	0.0	58.3	0.0	0.0	2.8	2.8
20-24	139	2.2	12.2	0.0	14.4	0.7	0.0	0.7	63.3	1.4	2.2	2.2	0.7
25-29	190	1.1	1.6	0.5	15.3	0.0	1.1	2.1	75.8	1.1	1.1	0.0	0.5
30-34	164	1.8	0.0	0.0	15.9	0.0	1.2	1.8	68.3	3.7	3.0	2.4	1.8
35-39	177	2.8	0.0	0.6	15.8	0.0	1.1	0.6	71.2	0.6	5.1	2.3	0.0
40-44	249	3.2	0.0	2.0	11.6	0.0	0.0	0.8	73.5	0.8	4.0	2.8	1.2
45-49	231	2.2	0.0	0.9	16.0	0.9	0.4	0.9	65.8	5.6	3.5	2.2	1.7
50-54	278	3.2	0.0	1.1	10.4	0.4	1.1	0.7	73.4	5.0	2.9	1.1	0.7
55-59	319	1.9	0.0	1.3	8.8	0.0	0.0	1.6	68.0	6.0	8.8	2.8	0.9
60-64	458	2.4	0.0	1.3	5.5	0.4	0.9	0.7	67.2	7.4	11.1	2.6	0.4
65-69	552	0.5	0.0	3.3	3.1	0.4	0.2	0.4	70.8	8.9	10.1	1.4	0.9
70-74	672	1.5	0.0	2.1	1.2	0.4	0.3	0.4	65.6	10.9	14.9	1.9	0.7
75-79	906	0.9	0.0	2.1	0.2	0.1	0.3	0.4	61.3	17.9	14.9	1.1	0.8
80-84	1,276	0.9	0.0	1.3	0.0	0.2	0.2	0.3	60.7	22.6	12.9	0.9	0.1
85-89	1,281	0.5	0.0	0.7	0.1	0.6	0.1	0.2	67.4	18.9	9.9	0.9	0.7
90+	722	0.7	0.0	0.7	0.0	0.6	0.1	0.1	64.5	22.6	9.1	0.4	1.1

TB: tuberculosis

\*1 有症状: 咳・痰・血痰・喀血等の「呼吸器症状」や、喘鳴、胸痛、背部痛、息切れ、発熱、寝汗、全身倦怠、体重減少等の「その他の症状」を有する場合。

TB symptoms: Respiratory symptoms such as cough, sputum expectoration, bloody sputum, and hemoptysis; and other symptoms such as wheezing, chest pain, back pain, dyspnea, fever, night sweating, fatigue tendency, and weight loss.

旧表改訂 新登録結核患者数、職業・性・年齢階層別、2014年  
 Previous table Number of newly notified TB patients by occupation, sex and age group, 2014

性/年齢	総数	接客業	看護師 /保健 師	医師	他医療 従事者	教員/ 保育士	生徒/ 学生	他常用 勤労者	他臨時 /日雇	他自営/ 自由業	家事従 事者	保育園児/ 幼稚園児/ 他の乳幼児	無職/ 他	不明
Sex/Age group	Total	Service workers	Nurses/P ublic health nurses	Medical doctors	Other medical workers	Teachers/ Nursery nurses	Pupils/St udents	Other regular workers	Other temporar y/daily workers	Other self- employed	Housekee pers	Infants/ Little children	Jobless/ Others	Unknown
男 Male	12,005	262	18	37	81	32	298	2,105	443	670	5	10	7,719	325
0-14	23	-	-	-	-	-	12	-	-	-	-	10	1	-
15-19	88	1	-	-	-	-	67	7	6	2	-	-	3	2
20-24	306	13	-	-	5	1	148	92	18	1	-	-	26	2
25-29	334	35	3	1	10	9	57	157	16	5	-	-	35	6
30-39	674	41	10	7	22	3	11	397	47	36	-	-	86	14
40-49	905	45	1	6	14	7	2	499	66	69	1	-	150	45
50-59	1,020	39	3	5	15	9	1	467	71	104	-	-	275	31
60-69	1,850	52	1	6	9	1	0	389	134	179	3	-	996	80
70-79	2,655	26	-	5	4	1	0	84	80	160	1	-	2,215	79
80+	4,150	10	-	7	2	1	0	13	5	114	-	-	3,932	66
女 Female	7,610	234	231	10	174	43	232	591	231	124	369	11	5,218	142
0-14	26	-	-	-	-	-	15	-	-	-	-	11	-	-
15-19	80	-	-	-	-	-	72	3	2	-	-	-	2	1
20-24	247	15	12	-	11	2	98	52	21	1	4	-	27	4
25-29	301	30	33	2	20	7	27	88	24	2	20	-	45	3
30-39	561	64	74	2	33	4	17	146	38	7	73	-	89	14
40-49	535	49	59	4	46	11	2	123	50	16	51	-	108	16
50-59	494	25	41	2	41	14	0	107	42	16	50	-	138	18
60-69	747	34	11	-	18	3	0	61	40	37	75	-	445	23
70-79	1,373	12	1	-	5	1	1	8	10	28	75	-	1,206	26
80+	3,246	5	-	-	-	1	0	3	4	17	21	-	3,158	37

旧表 職業別、20～59歳新登録肺結核患者の発見方法別割合、2014年  
 Previous table Proportion of mode of detection among newly notified pulmonary TB patients aged 20-59 years by occupation, 2014

	肺結核 Pulmonary TB patients	個別健診 Individual medical checkup	定期健診 Mass screening			接触者健診 Contact examination		医療機関 Clinics/Hospitals			その他/ 不明 Others/Un known
			住民 Residents	職場 Employe es	学校/施 設 Schools/F acilities	家族 Family	その他 Others	有症状 受診(*2) Outpatient s with TB symptoms	入院中 Inpatients with other diseases	通院中 Outpatients with other diseases	
総数 Total	4,430	3.0	1.5	22.8	3.7	3.2	4.7	50.3	3.1	4.2	3.6
接客業 Service workers	290	3.1	1.4	22.1	0.0	5.2	1.7	60.0	1.7	3.4	1.4
医療関係者 Medical workers(*1)	410	2.2	0.5	38.3	0.7	1.7	13.7	36.1	1.5	3.7	1.7
教員・保育士 Teachers/ Nursery nurses	58	3.4	1.7	44.8	0.0	6.9	3.4	37.9	0.0	1.7	0.0
学生 Students	322	2.2	0.9	1.6	42.9	1.2	6.5	30.4	0.3	1.9	12.1
他の常用勤労者 Other regular workers	1,767	2.5	0.8	36.6	0.1	2.6	3.8	46.5	1.9	3.5	1.6
他の臨時・日雇 Other temporary/ daily workers	328	3.4	1.8	14.0	0.9	4.6	4.0	63.4	2.7	2.1	3.0
他の自営自由業 Other self-employed	213	4.2	6.6	7.5	0.0	3.8	1.9	65.3	2.8	5.2	2.8
家事 Housekeepers	140	5.7	3.6	2.9	0.0	10.7	0.0	67.9	1.4	6.4	1.4
無職 Jobless/ Others	713	3.6	2.2	2.4	1.8	3.2	4.3	60.9	8.3	7.7	5.5
不明 Unknown	189	3.2	0.5	15.9	3.2	1.6	3.7	46.6	7.4	4.8	13.2

\*1 医療関係者：看護師・保健師・助産師，医師，その他医療職含む。

Medical workers include nurses, public health nurses, medical doctors and dentists, physical therapists, occupational therapists, medical technologists, radiographers, and co-medicals.

\*2 有症状：咳・痰・血痰・喀血等の「呼吸器症状」や、喘鳴、胸痛、背部痛、息切れ、発熱、寝汗、全身倦怠、体重減少等の「その他の症状」を有する場合。

TB symptoms: Respiratory symptoms such as cough, sputum expectoration, bloody sputum, and hemoptysis; and other symptoms such as wheezing, chest pain, back pain, dyspnea, fever, night sweating, fatigue tendency, and weight loss.

【診斷時病狀】

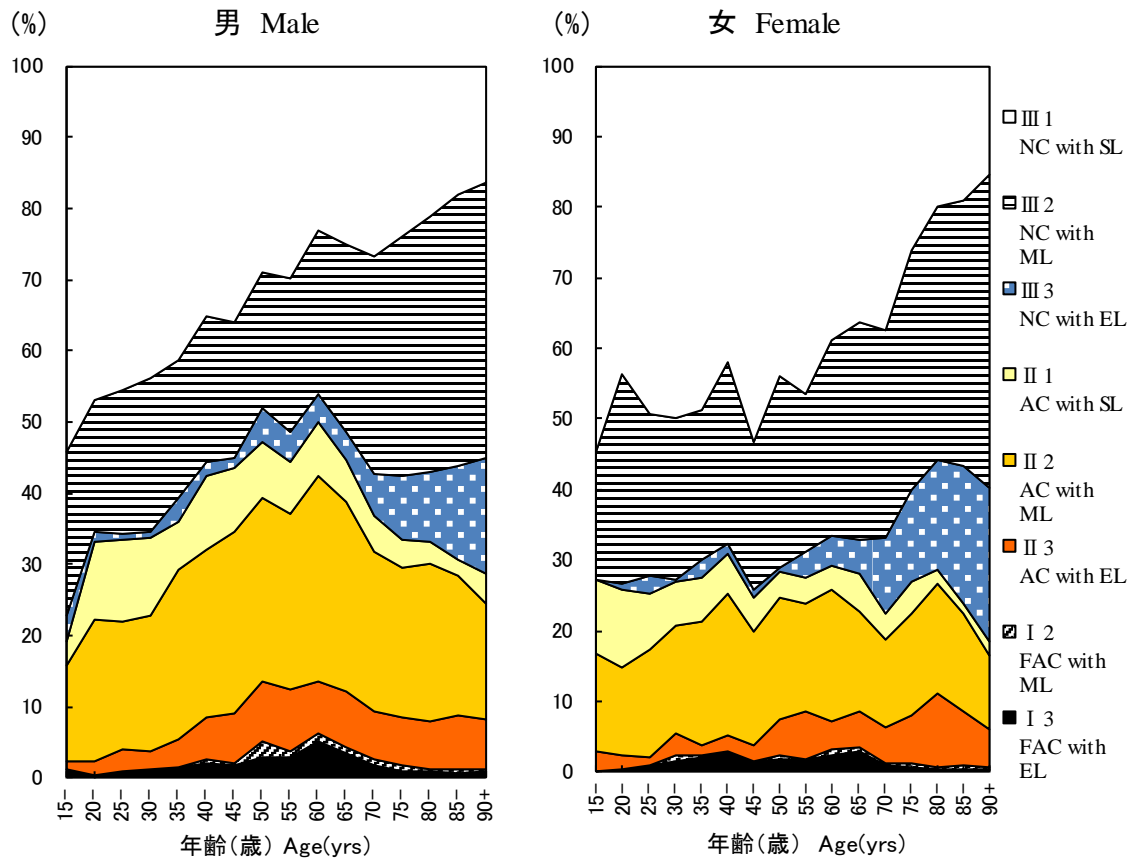


図3 新登録肺結核患者中胸部X線写真学会分類別所見割合，性・年齢5 歳階級別，2014 年

Fig.3 Proportion of cases classified by X-ray classification by sex and 5-yearage group, 2014

NC : Non-cavitory SL : Slight lesion AC : Advanced cavitory ML : Moderate lesion  
 FAC: Far-advance cavitory EL : Extensive lesion

表2 新登録結核患者中「HIV合併あり」と報告された患者数、性・年齢階層別、2014年および2007～2014年  
 Table 2 Number of newly notified tuberculosis patients with HIV infection, by sex and age group, 2014 and 2007-2014

年齢階層 Age group	喀痰塗抹陽性 Sputum smear positive		他結核菌陽性 Other bacteriologic- ally- positive		菌陰性結核 Bacteriologically- negative		肺外結核 Extra-pulmonary		総数 Total	
	男 M	女 F	男 M	女 F	男 M	女 F	男 M	女 F	男 M	女 F
2014年 2014 Calendar year										
総計 Total	11	2	11 (3)	0	1	2 (2)	16 (4)	2 (1)	39 (7)	6 (3)
0-19	0	0	0	0	0	0	0	0	0	0
20-24	1	0	1 (1)	0	0	0	0	0	2 (1)	0
25-29	1	0	0	0	0	0	1	0	2	0
30-34	1	0	3 (1)	0	1	0	1	0	6 (1)	0
35-39	1	0	1	0	0	2 (2)	3 (2)	1 (1)	5 (2)	3 (3)
40-44	0	1	3 (1)	0	0	0	3 (1)	0	6 (2)	1
45-49	1	0	2	0	0	0	3 (1)	1	6 (1)	1
50-54	0	0	0	0	0	0	1	0	1	0
55-59	1	0	0	0	0	0	1	0	2	0
60-64	1	0	0	0	0	0	2	0	3	0
65-69	1	0	1	0	0	0	1	0	3	0
70-74	0	0	0	0	0	0	0	0	0	0
75-79	1	0	0	0	0	0	0	0	1	0
80+	2	1	0	0	0	0	0	0	2	1
2007～2014年 2007-2014 Calendar year										
総計 Total	134 (12)	23 (13)	75 (16)	9 (6)	36 (4)	7 (5)	153 (28)	24 (12)	398 (60)	63 (36)
0-19	1 (1)	0	0	0	0	0	2	0	3 (1)	0
20-24	4 (2)	0	2 (1)	0	1 (1)	1 (1)	1	1	8 (4)	2 (1)
25-29	8 (3)	3 (2)	1 (1)	1 (1)	1 (1)	0	9 (1)	1 (1)	19 (6)	5 (4)
30-34	11 (3)	4 (4)	9 (1)	3 (2)	2	1 (1)	20 (7)	4 (2)	42 (11)	12 (9)
35-39	19 (1)	3 (3)	15 (4)	2 (2)	5	2 (2)	24 (5)	4 (3)	63 (10)	11 (10)
40-44	25 (1)	4 (3)	15 (5)	0	6 (1)	3 (1)	35 (11)	5 (4)	81 (18)	12 (8)
45-49	13 (1)	1 (1)	9 (3)	1 (1)	4 (1)	0	29 (4)	2	55 (9)	4 (2)
50-54	10	0	10 (1)	0	5	0	7	0	32 (1)	0
55-59	8	0	3	0	4	0	9	2 (2)	24	2 (2)
60-64	11	1	5	0	3	0	6	0	25	1
65-69	10	0	3	0	3	0	5	1	21	1
70-74	2	2	1	0	1	0	2	1	6	3
75-79	4	0	0	0	1	0	3	2	8	2
80+	8	5	2	2	0	0	1	1	11	8

( ): 外国人患者の再掲 Re-count of foreigners

HIV : Human Immunodeficiency Virus. M : male patients, F : female patients.

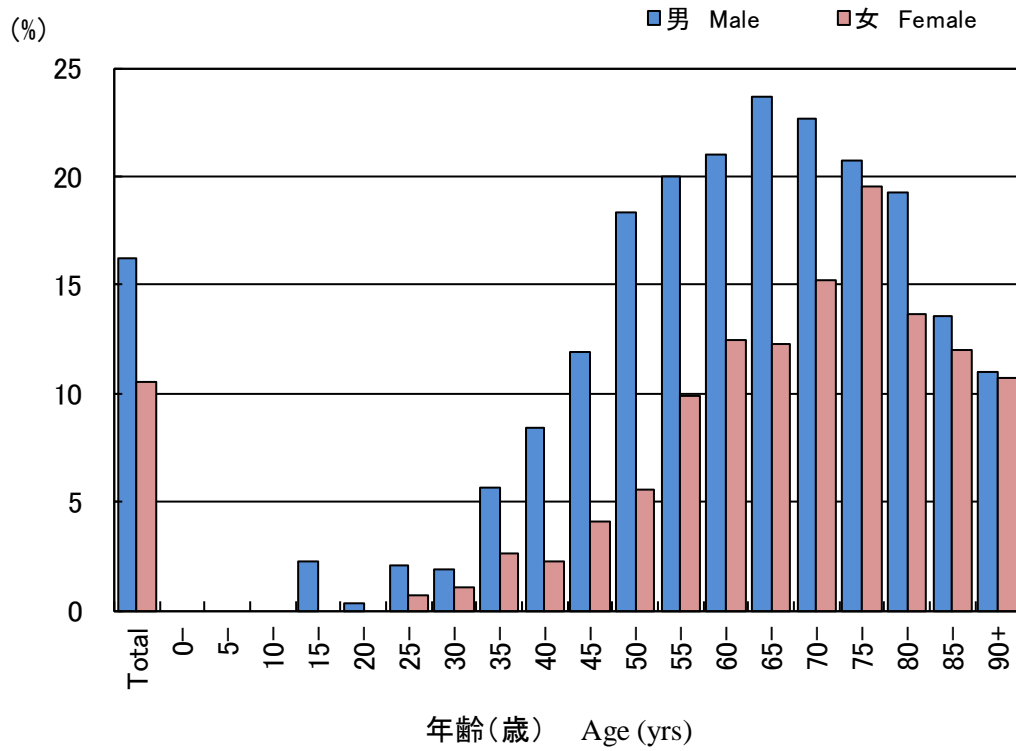


図4 新登録結核患者中「糖尿病合併あり」と報告された患者の割合、性・年齢階層別、2014年  
 Fig.4 Proportion of newly notified tuberculosis patients with diabetes mellitus in each age-group by sex, 2014



表3 新登録肺結核患者から分離培養された結核菌の抗結核薬剤感受性検査結果、治療歴別、2012～2014年  
Table 3 Drug susceptibility test results among newly notified pulmonary tuberculosis patients, by treatment history, 2012–2014

治療歴、菌検査状況、耐性状況 Treatment history, Culture examination results, Drug susceptibility test results	2012				2013				2014			
	n	%	%	%	n	%	%	%	n	%	%	%
<b>総数 Total</b>												
肺結核 Pulmonary tuberculosis	16,432	100%			15,972	100%			15,149	100%		
培養結果把握 Culture result obtained	14,058	85.6			13,311	83.3			12,909	85.2		
培養陽性 Culture positive	11,261	68.5	100%		10,523	65.9	100%		10,259	67.7	100%	
感受性結果把握 DST result obtained	8,347		74.1	100%	7,701		73.2	100%	7,645		74.5	100%
多剤耐性 MDR	60			0.7	47			0.6	56			0.7
INH 耐性 Any INH resistance	380			4.6	369			4.8	349			4.6
RFP耐性 Any RFP resistance	73			0.9	64			0.8	76			1.0
1 剤以上耐性 Any resistance*	810			9.7	757			9.8	749			9.8
<b>初回治療 New treatment</b>												
肺結核 Pulmonary tuberculosis	15,040	100%			14,727	100%			13,956	100%		
培養結果把握 Culture result obtained	12,882	85.7			12,279	83.4			11,897	85.2		
培養陽性 Culture positive	10,379	69.0	100%		9,782	66.4	100%		9,523	68.2	100%	
感受性結果把握 DST result obtained	7,676		74.0	100%	7,166		73.3	100%	7,104		74.6	100%
多剤耐性 MDR	38			0.5	31			0.4	40			0.6
INH 耐性 Any INH resistance	310			4.0	326			4.5	288			4.1
RFP耐性 Any RFP resistance	46			0.6	42			0.6	58			0.8
1 剤以上耐性 Any resistance*	712			9.3	680			9.5	664			9.3
<b>再治療 Re-treatment</b>												
肺結核 Pulmonary tuberculosis	1,094	100%			1,013	100%			968	100%		
培養結果把握 Culture result obtained	959	87.7			852	84.1			848	87.6		
培養陽性 Culture positive	693	63.3	100%		586	57.8	100%		591	61.1	100%	
感受性結果把握 DST result obtained	555		80.1	100%	435		74.2	100%	449		76.0	100%
多剤耐性 MDR	22			4.0	16			3.7	15			3.3
INH 耐性 Any INH resistance	67			12.1	35			8.0	57			12.7
RFP耐性 Any RFP resistance	26			4.7	22			5.1	17			3.8
1 剤以上耐性 Any resistance*	94			16.9	65			14.9	79			17.6
<b>治療歴不明 No information about treatment history</b>												
肺結核 Pulmonary tuberculosis	298	100%			232	100%			225	100%		
培養結果把握 Culture result obtained	217	72.8			180	77.6			164	72.9		
培養陽性 Culture positive	189	63.4	100%		155	66.8	100%		145	64.4	100%	
感受性結果把握 DST result obtained	116		61.4	100%	100		64.5	100%	92		63.4	100%
多剤耐性 MDR	0			0.0	0			0.0	1			1.1
INH 耐性 Any INH resistance	3			2.6	8			8.0	4			4.3
RFP耐性 Any RFP resistance	1			0.9	0			0.0	1			1.1
1 剤以上耐性 Any resistance*	4			3.4	12			12.0	6			6.5

DST: Drug susceptibility test MDR: Multi-drug resistant, i.e., resistant to at least INH and RFP INH: isoniazid RFP: rifampicin

感受性結果は重複あり Cases having drug resistance are counted independently by drug

\*: INH, RFP, SM EBの4剤のうちのいずれかに耐性 resistant to either INH, RFP, SM, or EB

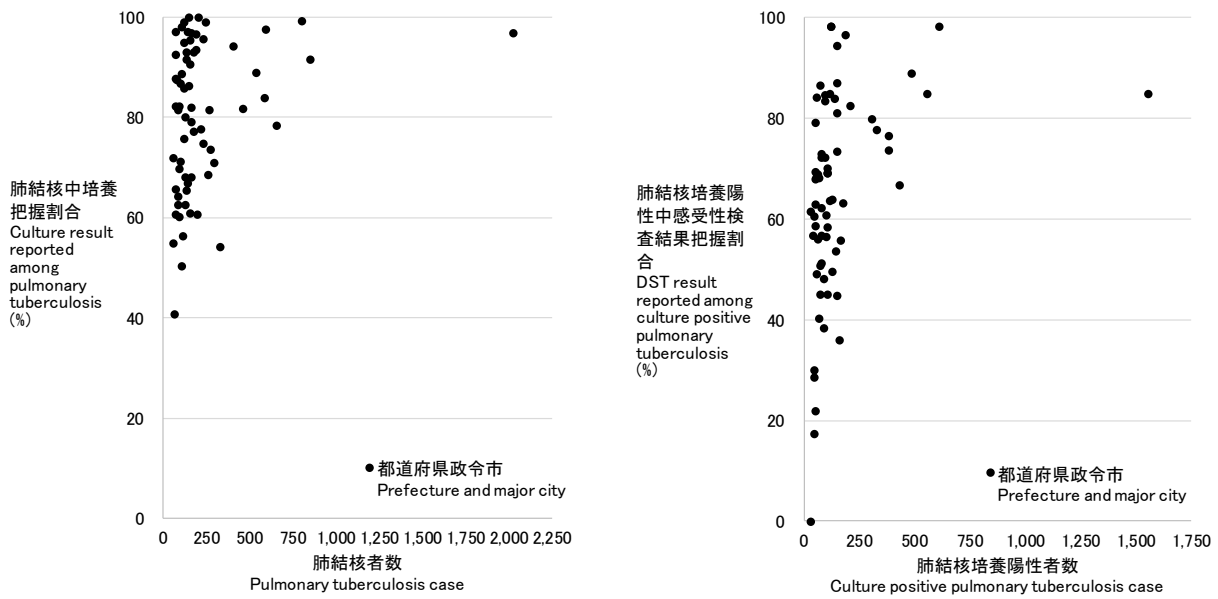
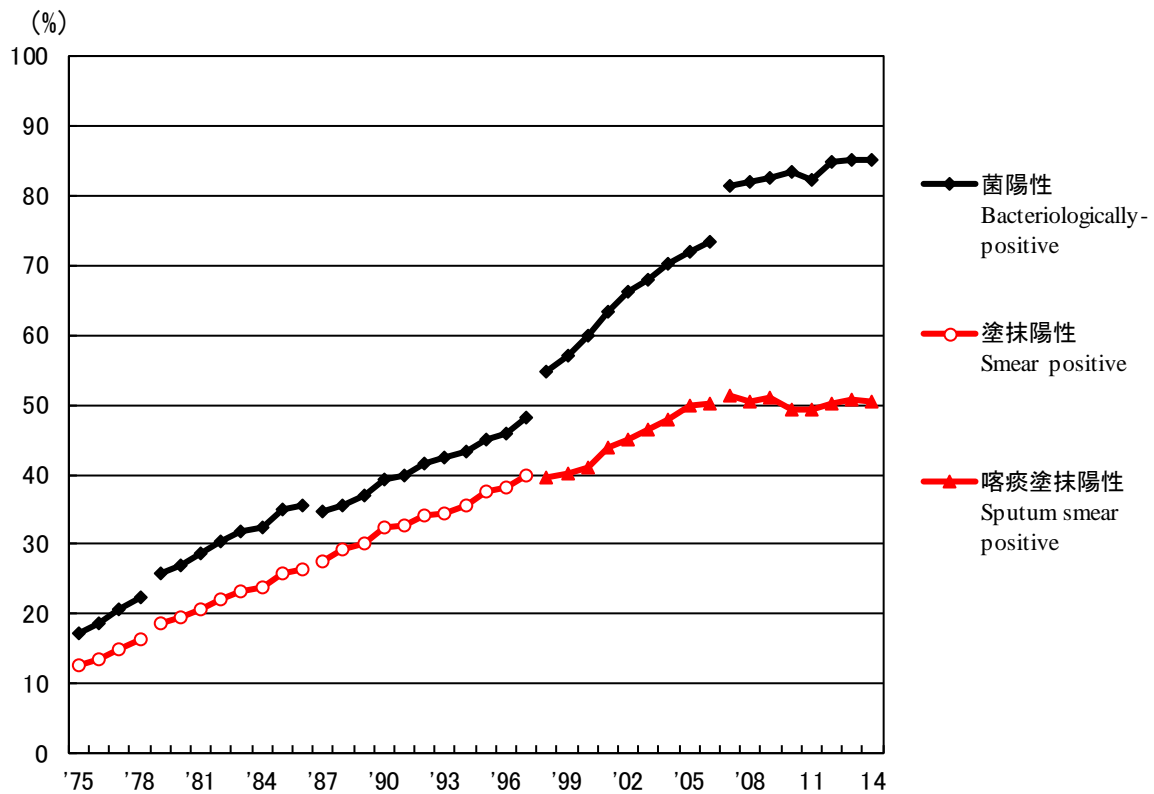


図5 新登録肺結核患者数とその内培養把握割合の散布図(左)、及び新登録肺結核培養陽性者数とその内感受性検査結果把握割合の散布図(右)、都道府県政令指定都市別、2014年

Fig. 5 Scatter plot of culture results reported among pulmonary tuberculosis patients and anti-tuberculosis drug susceptibility test results among newly notified pulmonary tuberculosis patients, by prefecture and major city, 2014



旧 図 新登録肺結核患者中菌陽性割合の推移、1975～2014年

Previous Fig.

Proportion of bacteriologically confirmed cases among newly notified pulmonary tuberculosis patients, 1975-2014

資料と対象 Sources of information and subjects:

結核登録者の定期報告 Annual tuberculosis reports from public health centers

1975-1978: 全結核 All forms of tuberculosis

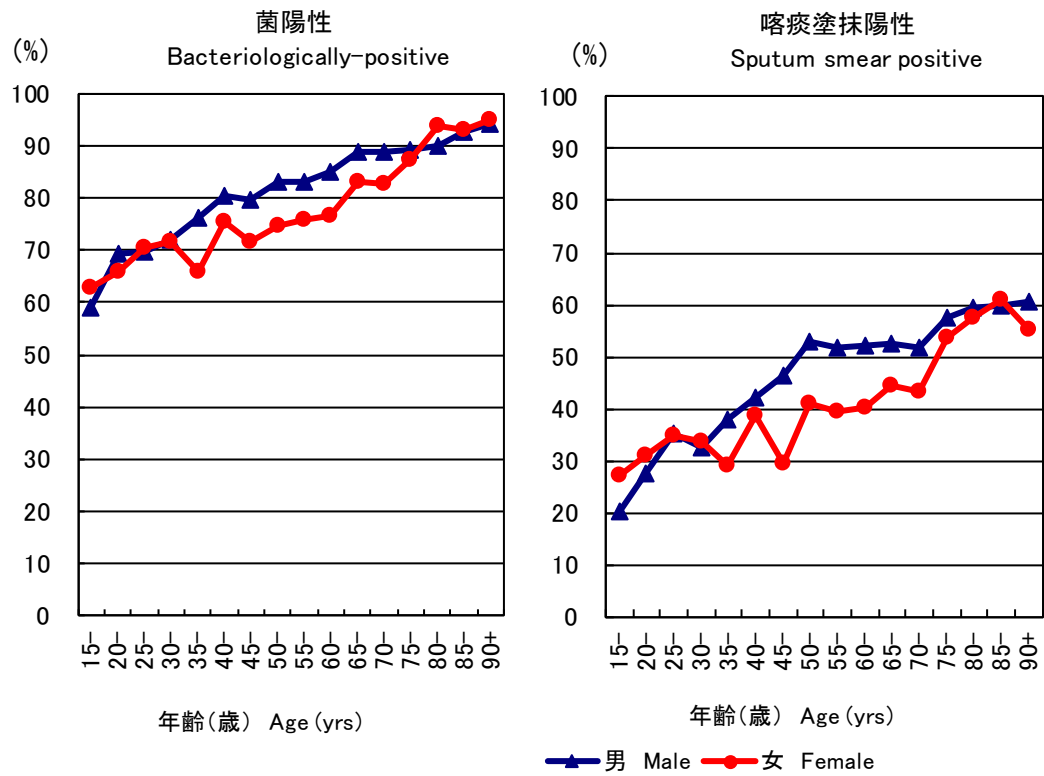
1979-1986: 肺結核 Pulmonary tuberculosis

電算化結核サーベイランスシステム Nationwide computerized tuberculosis surveillance system

1987-1997: 肺結核 Pulmonary Tuberculosis

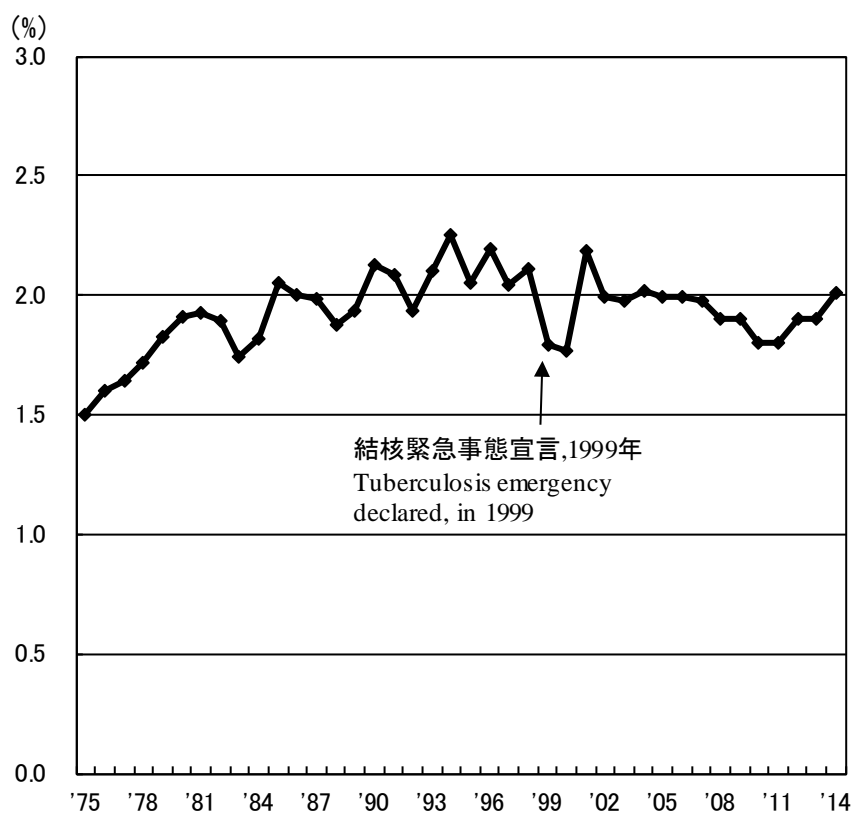
1998-2006: 肺結核(活動性分類の変更) Pulmonary tuberculosis (New patient criteria for notification were applied)

2007-2009: 肺結核(核酸増幅法項目の追加) Pulmonary tuberculosis (Item of nucleic acid amplification was added)



旧 図 新登録肺結核患者中菌陽性割合、性・年齢5歳階級別、2014年  
Previous Fig.

Proportion of bacteriologically confirmed cases among newly notified pulmonary tuberculosis patients by sex and 5-year age group, 2014



旧図 新登録肺結核患者中胸部X線写真での広汎空洞型割合の推移、1975～2014年

Previous Fig. Proportion of far-advanced cavitary cases among newly notified pulmonary Tuberculosis patients, 1975-2014

旧表 性・職業別、30～59歳新登録肺結核患者中有空洞あるいは／かつ喀痰塗抹陽性の割合、2014年  
 Previous table Proportion of cavitory or/and sputum smear positive cases among newly notified pulmonary TB patients aged 30-59 years, 2014

	男 Male							女 Female						
	肺結核 Pulmonary TB	有空洞あるいは 喀痰塗抹陽性 Cavitory or sputum smear(+)			有空洞かつ 喀痰塗抹陽性 Cavitory and sputum smear(+)			肺結核 Pulmonary TB	有空洞あるいは 喀痰塗抹陽性 Cavitory or sputum smear(+)			有空洞かつ 喀痰塗抹陽性 Cavitory and sputum smear(+)		
		n	%	Ratio	n	%	Ratio		n	%	Ratio	n	%	Ratio
		接客業 Service workers	104	62	59.6	1.5	32		30.8	1.9	108	57	52.8	1.5
医療職 Medical workers	75	30	40.0	1.0	12	16.0	1.0	246	88	35.8	1.0	19	7.7	1.0
教員・保育士 Teachers/ Nursery nurses	16	6	37.5	0.9	5	31.3	2.0	26	6	23.1	0.6	2	7.7	1.0
他の常用勤労者 Other regular workers	1,154	579	50.2	1.3	282	24.4	1.5	282	120	42.6	1.2	46	16.3	2.1
他の臨時・日雇 Other temporary/ daily workers	169	112	66.3	1.7	67	39.6	2.5	95	52	54.7	1.5	19	20.0	2.6
他の自営自由 Other self- employed	174	112	64.4	1.6	63	36.2	2.3	33	11	33.3	0.9	6	18.2	2.4
無職 Jobless	393	266	67.7	1.7	151	38.4	2.4	231	116	50.2	1.4	57	24.7	3.2
その他 Others	115	65	56.5	1.4	25	21.7	1.4	193	87	45.1	1.3	33	17.1	2.2
総数 Total	2,200	1,232	56.0		637	29.0		1,214	537	44.2		208	17.1	

その他:家事、学生、不明 Others:Houskeepers/ Students/ Unknown

Ratio: 医療職の割合に対するその他職業の割合の比 The ratio of each proportion to that of medical workers

旧表 新登録肺結核患者の薬剤感受性検査結果、性・年齢別、2014年および2007～2014年

Previous table Drug susceptibility test results among newly notified pulmonary tuberculosis patients, by sex and age group, 2014 and 2007-2014

年齢 Age group	総数 Total										初回治療(再掲) New treatment (Re-count)									
	男 Male					女 Female					男 Male					女 Female				
	感受性結果把握	多剤耐性	INH耐性	RFP耐性	1剤以上耐性*	感受性結果把握	多剤耐性	INH耐性	RFP耐性	1剤以上耐性*	感受性結果把握	多剤耐性	INH耐性	RFP耐性	1剤以上耐性*	感受性結果把握	多剤耐性	INH耐性	RFP耐性	1剤以上耐性*
DST result obtained	MDR	Any INH resistance	Any RFP resistance	Any resistance	DST result obtained	MDR	Any INH resistance	Any RFP resistance	Any resistance	DST result obtained	MDR	Any INH resistance	Any RFP resistance	Any resistance	DST result obtained	MDR	Any INH resistance	Any RFP resistance	Any resistance	
2014年	2014 Calendar year																			
総数 Total	4,946	42	269	54	554	2,699	14	80	22	195	4,525	29	221	39	484	2,579	11	67	19	180
0-19	36	0	2	0	4	33	0	2	1	5	30	0	2	0	4	33	0	2	1	5
20-29	256	9	24	11	45	211	8	13	9	30	249	8	22	9	42	203	7	12	8	29
30-39	260	1	14	1	39	189	1	7	3	21	248	1	14	1	38	183	1	5	3	18
40-49	390	6	23	6	51	187	1	8	1	19	367	5	20	5	47	180	0	6	0	16
50-59	453	6	34	8	61	161	1	2	2	11	421	3	28	5	52	155	0	1	1	10
60-69	795	3	45	9	104	243	0	7	1	19	731	3	37	8	89	230	0	6	1	18
70-79	1,117	10	65	12	142	434	1	12	1	29	1,012	6	50	8	123	413	1	11	1	28
80+	1,639	7	62	7	108	1,241	2	29	4	61	1,467	3	48	3	89	1,182	2	24	4	56
2007～2014年	2007-2014 Calendar year																			
総数 Total	36,800	294	1,860	410	4,462	18,744	151	837	200	1,960	33,129	180	1,490	257	3,843	17,509	90	677	127	1,715
0-19	243	6	21	6	48	235	2	18	3	47	231	4	19	4	46	224	2	16	3	43
20-29	1,836	38	132	49	320	1,571	42	126	52	272	1,761	31	116	40	301	1,494	30	110	38	249
30-39	2,346	16	150	25	358	1,771	20	108	31	250	2,217	12	140	21	336	1,695	15	94	22	225
40-49	3,008	27	163	39	429	1,410	16	69	23	189	2,814	18	142	26	385	1,334	9	59	15	171
50-59	4,415	44	253	67	655	1,207	14	50	21	135	4,070	26	215	41	583	1,144	5	36	11	118
60-69	6,627	44	354	77	920	1,794	12	96	14	228	6,016	26	290	45	791	1,680	6	75	7	195
70-79	8,177	71	412	88	971	3,497	21	146	26	353	7,202	37	296	47	796	3,195	9	116	13	304
80+	10,148	48	375	59	761	7,259	24	224	30	486	8,818	26	272	33	605	6,743	14	171	18	410
2007～2014年	2007-2014 Calendar year																			
総数 Total	100%	0.8	5.1	1.1	12.1	100%	0.8	4.5	1.1	10.5	100%	0.5	4.5	0.8	11.6	100%	0.5	3.9	0.7	9.8
0-19	100	2.5	8.6	2.5	19.8	100	0.9	7.7	1.3	20.0	100	1.7	8.2	1.7	19.9	100	0.9	7.1	1.3	19.2
20-29	100	2.1	7.2	2.7	17.4	100	2.7	8.0	3.3	17.3	100	1.8	6.6	2.3	17.1	100	2.0	7.4	2.5	16.7
30-39	100	0.7	6.4	1.1	15.3	100	1.1	6.1	1.8	14.1	100	0.5	6.3	0.9	15.2	100	0.9	5.5	1.3	13.3
40-49	100	0.9	5.4	1.3	14.3	100	1.1	4.9	1.6	13.4	100	0.6	5.0	0.9	13.7	100	0.7	4.4	1.1	12.8
50-59	100	1.0	5.7	1.5	14.8	100	1.2	4.1	1.7	11.2	100	0.6	5.3	1.0	14.3	100	0.4	3.1	1.0	10.3
60-69	100	0.7	5.3	1.2	13.9	100	0.7	5.4	0.8	12.7	100	0.4	4.8	0.7	13.1	100	0.4	4.5	0.4	11.6
70-79	100	0.9	5.0	1.1	11.9	100	0.6	4.2	0.7	10.1	100	0.5	4.1	0.7	11.1	100	0.3	3.6	0.4	9.5
80+	100	0.5	3.7	0.6	7.5	100	0.3	3.1	0.4	6.7	100	0.3	3.1	0.4	6.9	100	0.2	2.5	0.3	6.1

DST: Drug susceptibility test. MDR: Multi-drug resistance, i.e., resistant to at least INH and RFP.

INH: Isoniazid. RFP: Rifampicin.

\*: 2012年以降はINH, RFP, SM EBの4剤のうちのいずれかに耐性

旧表 新登録肺结核患者の薬剤感受性検査結果および耐性率、性・年齢別、2007～2014年（再掲；外国人）  
 Previous table Drug susceptibility test results among newly notified pulmonary tuberculosis patients, by sex and age group, 2007-2014 (Re-count of foreigners)

年齢 Age group	総数 Total										初回治療(再掲) New treatment (Re-count)									
	男 Male					女 Female					男 Male					女 Female				
	感受性結果 把握 DST result obtained	多剤耐 性 MDR	INH耐 性 Any resista nce	RFP耐 性 Any resista nce	1剤以 上耐性 * Any resista nce	感受性結果 把握 DST result obtained	多剤耐 性 MDR	INH耐 性 Any resista nce	RFP耐 性 Any resista nce	1剤以 上耐性 * Any resista nce	感受性結果 把握 DST result obtained	多剤耐 性 MDR	INH耐 性 Any resista nce	RFP耐 性 Any resista nce	1剤以 上耐性 * Any resista nce	感受性結果 把握 DST result obtained	多剤耐 性 MDR	INH耐 性 Any resista nce	RFP耐 性 Any resista nce	1剤以 上耐性 * Any resista nce
2007～2014年	2007-2014 Calendar year																			
総数 Total	996	43	106	48	181	1139	56	146	68	231	940	31	86	36	162	1071	40	124	49	201
0-19	46	5	12	5	19	38	1	4	2	5	43	3	10	3	17	37	1	3	2	4
20-29	476	29	60	34	95	495	37	81	43	126	458	23	49	28	87	473	27	69	32	112
30-39	176	4	14	4	26	290	11	39	13	55	169	3	13	3	24	269	8	35	9	49
40-49	98	3	8	3	18	178	3	12	5	26	89	0	4	0	13	164	1	10	2	22
50-59	67	0	2	0	5	58	1	4	2	7	63	0	2	0	5	53	1	2	2	4
60-69	57	2	6	2	12	30	1	3	1	4	51	2	5	2	11	30	1	3	1	4
70-79	40	0	2	0	3	20	2	3	2	4	36	0	2	0	3	16	1	2	1	2
80+	36	0	2	0	3	30	0	0	0	4	31	0	1	0	2	29	0	0	0	4
2007～2014年	2007-2014 Calendar year																			
総数 Total	100%	4.3	10.6	4.8	18.2	100%	4.9	12.8	6.0	20.3	100%	3.3	9.1	3.8	17.2	100%	3.7	11.6	4.6	18.8
0-19	100	10.9	26.1	10.9	41.3	100	2.6	10.5	5.3	13.2	100	7.0	23.3	7.0	39.5	100	2.7	8.1	5.4	10.8
20-29	100	6.1	12.6	7.1	20.0	100	7.5	16.4	8.7	25.5	100	5.0	10.7	6.1	19.0	100	5.7	14.6	6.8	23.7
30-39	100	2.3	8.0	2.3	14.8	100	3.8	13.4	4.5	19.0	100	1.8	7.7	1.8	14.2	100	3.0	13.0	3.3	18.2
40-49	100	3.1	8.2	3.1	18.4	100	1.7	6.7	2.8	14.6	100	0.0	4.5	0.0	14.6	100	0.6	6.1	1.2	13.4
50-59	100	0.0	3.0	0.0	7.5	100	1.7	6.9	3.4	12.1	100	0.0	3.2	0.0	7.9	100	1.9	3.8	3.8	7.5
60-69	100	3.5	10.5	3.5	21.1	100	3.3	10.0	3.3	13.3	100	3.9	9.8	3.9	21.6	100	3.3	10.0	3.3	13.3
70-79	100	0.0	5.0	0.0	7.5	100	10.0	15.0	10.0	20.0	100	0.0	5.6	0.0	8.3	100	6.3	12.5	6.3	12.5
80+	100	0.0	5.6	0.0	8.3	100	0.0	0.0	0.0	13.3	100	0.0	3.2	0.0	6.5	100	0.0	0.0	0.0	13.8

DST: Drug susceptibility test. MDR: Multi-drug resistance, i. e., resistant to at least INH and RFP. INH: Isoniazid. RFP: Rifampicin.

\*: 2012年はINH, RFP, SM, EBの4剤のうちのいずれかに耐性