

【概況】

人口10万対率
Rate per 100,000

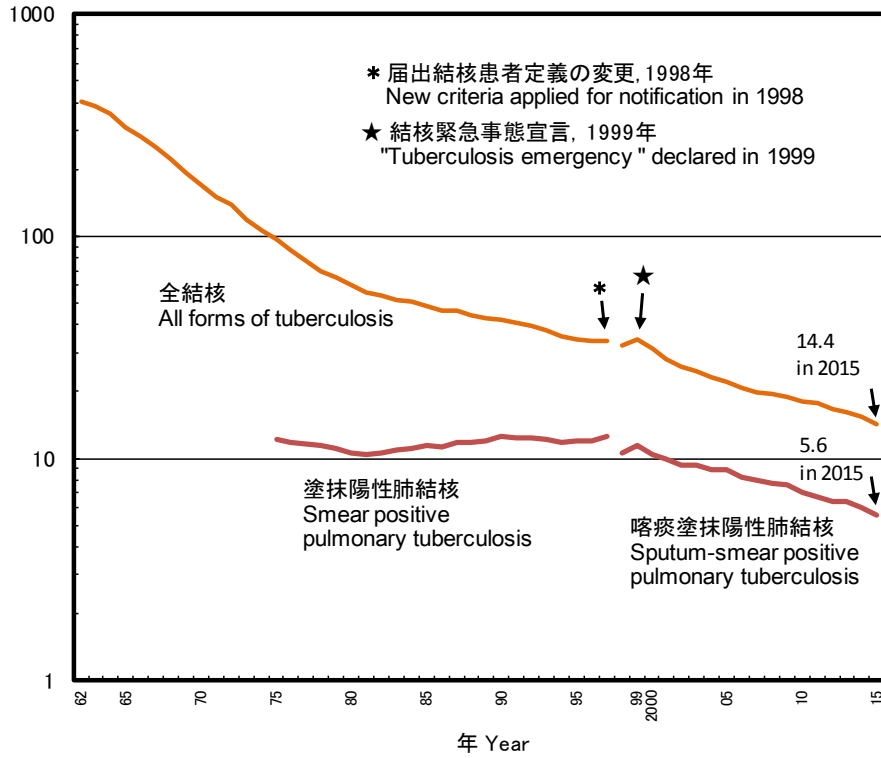


図1 人口10万対年間新結核患者登録数(登録率)の年次推移, 1962~2015年
Fig. 1 Annual trend of tuberculosis notification rate (all forms, sputum-smear positive pulmonary tuberculosis) per 100,000 population in Japan, 1962-2015

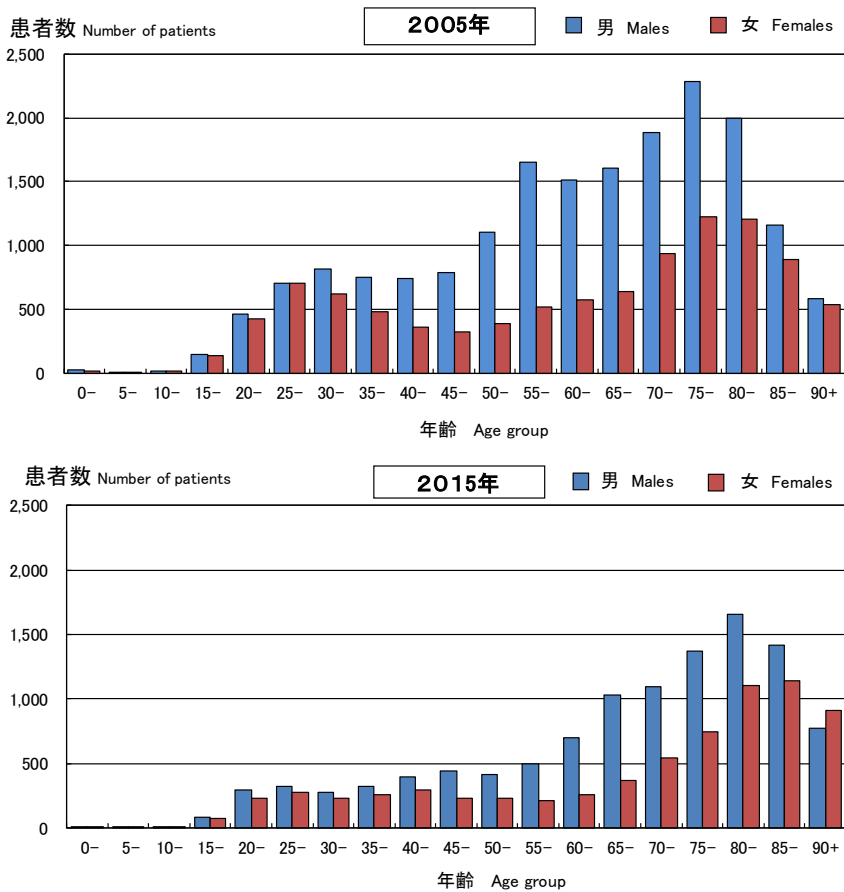


図2 新登録結核患者数の年齢分布, 性別, 2005年・2015年
Fig. 2 Age distribution of newly notified tuberculosis patients by sex in Japan, in 2005 and in 2015

表 1 新登録結核患者数(全結核・初回治療・再治療別・肺結核・肺外結核別), 年齢階層別, 2012~2015年
 Table 1 Number of newly notified tuberculosis patients (all forms, new and re-treatment, pulmonary and extra-pulmonary), by age group, in Japan, 2012-2015

年齢階層 Age group	新登録全結核患者数 Tuberculosis notifications, all forms (*1)				新全結核患者登録率(罹患率) Tuberculosis notification rates, all forms (*2)				初回治療結核 New tuberculosis												再治療結核 Re-treatment tuberculosis																											
									肺結核 Pulmonary tuberculosis						肺外結核 Extra-pulmonary tuberculosis						肺結核 Pulmonary tuberculosis						肺外結核 Extra-pulmonary tuberculosis																					
									喀痰塗抹陰性肺結核 Sputum-smear negative						菌検査結果不明 Bacteriological test results unknown						喀痰塗抹陽性肺結核 Sputum-smear positive						喀痰塗抹陰性肺結核 Sputum-smear negative						菌検査結果不明 Bacteriological test results unknown															
									喀痰塗抹陽性肺結核 Sputum-smear positive		その他菌陽性肺結核 Other bacteriologically positive		喀痰塗抹陰性・他肺結核 Other sputum-smear negative		菌検査結果不明		喀痰塗抹陽性肺結核 Sputum-smear positive		その他菌陽性肺結核 Other bacteriologically positive		喀痰塗抹陰性・他肺結核 Other sputum-smear negative		菌検査結果不明		喀痰塗抹陽性肺結核 Sputum-smear positive		その他菌陽性肺結核 Other bacteriologically positive		喀痰塗抹陰性・他肺結核 Other sputum-smear negative		菌検査結果不明																	
2012	2013	2014	2015	2012	2013	2014	2015	2012	2013	2014	2015	2012	2013	2014	2015	2012	2013	2014	2015	2012	2013	2014	2015	2012	2013	2014	2015	2012	2013	2014	2015	2012	2013	2014	2015	2012	2013	2014	2015									
総数 Total	21,283	20,495	19,615	18,280	16.7	16.1	15.4	14.4	7,663	7,584	7,153	6,676	5,350	5,174	4,937	4,819	2,132	2,041	1,918	1,638	193	160	173	139	4,609	4,274	4,255	3,976	574	535	498	455	336	296	296	264	162	163	157	119	22	19	17	13	242	249	211	181
0-14	63	66	49	51	0.4	0.4	0.3	0.3	4	0	1	2	4	14	11	12	30	26	18	17	6	1	4	2	16	20	13	16	1	0	0	0	0	1	0	0	1	3	1	1	0	0	0	1	1	1	1	0
15-19	165	165	168	163	2.7	2.7	2.8	2.8	38	44	31	40	40	37	54	47	46	45	50	37	4	4	4	3	23	21	15	29	2	5	5	1	5	1	3	2	4	5	5	3	2	1	1	0	1	2	0	1
20-29	1,288	1,196	1,188	1,127	9.7	9.1	9.2	9.0	320	345	321	277	387	346	356	378	304	302	277	271	23	15	18	12	188	144	164	151	17	12	8	15	18	16	15	12	16	7	20	9	2	2	1	0	13	7	8	2
30-39	1,528	1,317	1,235	1,101	8.9	7.9	7.7	7.1	423	393	323	327	439	379	371	313	310	261	255	202	19	17	16	12	258	200	202	192	25	19	18	21	19	13	14	20	14	15	12	2	2	1	2	0	19	19	22	12
40-49	1,600	1,496	1,440	1,363	9.1	8.3	7.8	7.5	514	495	453	426	428	418	416	396	244	227	229	188	22	16	20	20	286	266	234	243	41	28	27	28	28	12	18	22	13	10	19	15	1	2	0	4	23	22	24	21
50-59	1,795	1,665	1,514	1,351	11.5	10.8	9.8	8.8	631	606	550	501	462	429	366	357	239	207	187	156	23	15	24	14	323	270	277	234	49	57	47	34	28	34	23	26	21	18	21	5	3	3	3	3	16	26	16	21
60-69	3,012	2,833	2,597	2,359	16.3	15.4	14.3	13.1	1,083	1,045	936	858	742	716	656	616	306	283	253	241	38	29	23	20	644	556	547	476	78	74	74	77	55	41	52	26	33	41	23	19	5	5	2	3	28	43	31	23
70-79	4,595	4,359	4,028	3,757	33.7	31.4	28.4	26.9	1,657	1,572	1,465	1,323	1,082	1,064	961	966	333	340	297	257	33	30	30	26	1,163	1,081	1,017	974	144	110	113	85	80	75	65	58	27	29	32	28	5	4	4	1	71	54	44	39
80-89	5,753	5,856	5,753	5,317	77.6	76.2	72.5	66.0	2,339	2,426	2,389	2,194	1,400	1,392	1,309	1,289	261	290	290	216	23	32	30	23	1,357	1,354	1,401	1,280	193	184	168	153	87	85	85	81	28	29	20	28	2	1	4	1	63	63	57	52
90+	1,484	1,542	1,643	1,691	97.1	95.6	95.7	92.0	654	658	684	728	366	379	437	445	59	60	62	53	2	1	4	7	351	362	385	381	24	46	38	41	16	18	21	17	5	6	4	9	0	0	0	0	7	12	8	10

*1: All forms include new and re-treatment tuberculosis patients.

*2: 人口10万対率 Rate per 100,000 population

表 2 新登録潜在性結核感染症登録者数、性・年齢階層別、2013～2015年

Table 2 Newly notified latent tuberculosis infection (LTBI) patients, by sex and age group, in Japan, from 2013 to 2015

年齢 Age group	2013年					2014年					2015年				
	総数 Total	性 Sex		割合 (%)	女/男 Ratio of F/M	総数 Total	性 Sex		割合 (%)	女/男 Ratio of F/M	総数 Total	性 Sex		割合 (%)	女/男 Ratio of F/M
		男 Males	女 Females				男 Males	女 Females				男 Males	女 Females		
総数 Total	7,147	3,094	4,053	100	1.3	7,562	3,448	4,114	100	1.2	6,675	3,046	3,629	100	1.2
0-4	493	246	247	6.9	1.0	514	247	267	6.8	1.1	420	182	238	6.3	1.3
5-9	163	75	88	2.3	1.2	140	62	78	1.9	1.3	131	67	64	2.0	1.0
10-14	202	97	105	2.8	1.1	86	45	41	1.1	0.9	110	59	51	1.6	0.9
15-19	188	97	91	2.6	0.9	173	83	90	2.3	1.1	124	55	69	1.9	1.3
20-24	426	147	279	6.0	1.9	479	195	284	6.3	1.5	342	138	204	5.1	1.5
25-29	621	251	370	8.7	1.5	538	224	314	7.1	1.4	404	169	235	6.1	1.4
30-34	564	218	346	7.9	1.6	555	238	317	7.3	1.3	444	189	255	6.7	1.3
35-39	638	258	380	8.9	1.5	607	267	340	8.0	1.3	489	193	296	7.3	1.5
40-44	649	259	390	9.1	1.5	681	266	415	9.0	1.6	499	210	289	7.5	1.4
45-49	637	255	382	8.9	1.5	666	299	367	8.8	1.2	543	216	327	8.1	1.5
50-54	600	222	378	8.4	1.7	602	237	365	8.0	1.5	543	222	321	8.1	1.4
55-59	573	229	344	8.0	1.5	610	274	336	8.1	1.2	520	247	273	7.8	1.1
60-64	498	250	248	7.0	1.0	618	298	320	8.2	1.1	497	243	254	7.4	1.0
65-69	321	169	152	4.5	0.9	432	248	184	5.7	0.7	523	280	243	7.8	0.9
70+	574	321	253	8.0	0.8	861	465	396	11.4	0.9	1,086	576	510	16.3	0.9

Ratio of F/M: Ratio of female patients to male patients

#: proportion

旧表 新登録結核患者数、および潜在性結核感染症治療対象者数、登録月別、2015年
Previous table Newly notified tuberculosis cases by registered month, 2015

登録月 Registered month	活動性結核 Active tuberculosis									(別掲) 潜在性結 核感染症 LTBI* on treatment
	総数 All active tuberculosis	肺結核活動性 Active pulmonary tuberculosis						菌陰性・ その他 Bacillary negative or bacillary results unknown	肺外結核 活動性 Extra- pulmonary	
		総数 All active pulmonary tuberculosis	喀痰塗抹陽性 Sputum smear positive			その他結 核菌陽性 Other bacillary positive				
			総数 All sputum smear positive	初回治療 New	再治療 Retreatment					
総数 Total	18,280	14,123	7,131	6,676	455	5,118	1,874	4,157	6,675	
1月 Jan.	1,365	1,067	543	501	42	401	123	298	456	
2月 Feb.	1,436	1,118	584	543	41	388	146	318	504	
3月 Mar.	1,515	1,155	590	548	42	418	147	360	626	
4月 Apr.	1,482	1,136	585	546	39	405	146	346	569	
5月 May	1,516	1,147	574	543	31	410	163	369	493	
6月 Jun.	1,722	1,361	678	634	44	509	174	361	691	
7月 Jul.	1,718	1,314	663	618	45	469	182	404	602	
8月 Aug.	1,522	1,174	600	560	40	411	163	348	611	
9月 Sep.	1,481	1,133	576	545	31	396	161	348	570	
10月 Oct.	1,532	1,191	595	559	36	444	152	341	538	
11月 Nov.	1,462	1,131	556	527	29	425	150	331	495	
12月 Dec.	1,529	1,196	587	552	35	442	167	333	520	

* LTBI: Latent Tuberculosis Infection. These are not included in the number of active tuberculosis.

表3.1 新登録結核患者数、結核病種別、性・年齢階層別、1998～2015年
Table 3.1 Newly notified tuberculosis patients by affected organ, sex and age group, in Japan, from 1998 to 2015

性・年齢 2015年 Sex, Age-group, in 2015	全結核 Tuberculosis notifications, all forms	肺結核 Pulmonary tuberculosis		肺外結核 Extra-pulmonary tuberculosis																	
		肺 Lungs	気管支 Bronchi	咽頭・ 喉頭 Pharynx / Larynx	粟粒 Miliary	胸膜炎 Pleuritis	膿胸 Empyema	肺門・縦隔 リンパ節 Hilar・ Mediastinal lymph node	他の リンパ節 Other lymph nodes	髄膜炎 Menin- ges	腸 Intes- tines	脊椎 Verte- brae	他の 骨関節 Other joints / bones	腎・尿路 Kidneys / Urinary tracts	性器 Genitals	皮膚 Skins	眼 Eyes	耳 Ears	腹膜炎 Perito- neum	心膜炎 Pericar- dium	他の 臓器 Other organs
総数 Total	18,280	14,581 (79.8)	119 (0.7)	43 (0.2)	631 (3.5)	3,277 (17.9)	46 (0.3)	128 (0.7)	813 (4.4)	166 (0.9)	248 (1.4)	192 (1.1)	98 (0.5)	73 (0.4)	21 (0.1)	87 (0.5)	20 (0.1)	19 (0.1)	176 (1.0)	69 (0.4)	134 (0.7)
男 Male	11,124	9,125 (82.0)	46 (0.4)	14 (0.1)	231 (2.1)	2,272 (20.4)	34 (0.3)	68 (0.6)	271 (2.4)	101 (0.9)	111 (1.0)	87 (0.8)	50 (0.4)	44 (0.4)	14 (0.1)	29 (0.3)	8 (0.1)	6 (0.1)	78 (0.7)	46 (0.4)	67 (0.6)
女 Female	7,156	5,456 (76.2)	73 (1.0)	29 (0.4)	400 (5.6)	1,005 (14.0)	12 (0.2)	60 (0.8)	542 (7.6)	65 (0.9)	137 (1.9)	105 (1.5)	48 (0.7)	29 (0.4)	7 (0.1)	58 (0.8)	12 (0.2)	13 (0.2)	98 (1.4)	23 (0.3)	67 (0.9)
0-14	51	36 (70.6)	0 (0.0)	1 (2.0)	1 (2.0)	4 (7.8)	0 (0.0)	11 (21.6)	2 (3.9)	1 (2.0)	0 (0.0)	1 (2.0)	2 (3.9)	0 (0.0)	0 (0.0)	1 (2.0)	0 (0.0)	1 (2.0)	0 (0.0)	2 (3.9)	0 (0.0)
15-19	163	134 (82.2)	1 (0.6)	1 (0.6)	1 (0.6)	21 (12.9)	0 (0.0)	1 (0.6)	8 (4.9)	3 (1.8)	2 (1.2)	1 (0.6)	0 (0.0)	0 (0.0)	1 (0.6)	1 (0.6)	1 (0.6)	0 (0.0)	1 (0.6)	1 (0.6)	1 (0.6)
20-29	1,127	980 (87.0)	14 (1.2)	5 (0.4)	11 (1.0)	125 (11.1)	1 (0.1)	18 (1.6)	65 (5.8)	7 (0.6)	13 (1.2)	5 (0.4)	3 (0.3)	0 (0.0)	1 (0.1)	2 (0.2)	3 (0.3)	4 (0.4)	6 (0.5)	0 (0.0)	9 (0.8)
30-39	1,101	905 (82.2)	8 (0.7)	5 (0.5)	8 (0.7)	140 (12.7)	2 (0.2)	13 (1.2)	83 (7.5)	10 (0.9)	23 (2.1)	8 (0.7)	3 (0.3)	4 (0.4)	0 (0.0)	5 (0.5)	1 (0.1)	2 (0.2)	8 (0.7)	0 (0.0)	12 (1.1)
40-49	1,363	1,121 (82.2)	13 (1.0)	5 (0.4)	24 (1.8)	158 (11.6)	6 (0.4)	17 (1.2)	79 (5.8)	21 (1.5)	31 (2.3)	9 (0.7)	9 (0.7)	6 (0.4)	0 (0.0)	2 (0.1)	3 (0.2)	3 (0.2)	8 (0.6)	2 (0.1)	18 (1.3)
50-59	1,351	1,105 (81.8)	11 (0.8)	5 (0.4)	17 (1.3)	172 (12.7)	5 (0.4)	8 (0.6)	80 (5.9)	19 (1.4)	27 (2.0)	11 (0.8)	5 (0.4)	8 (0.6)	1 (0.1)	5 (0.4)	5 (0.4)	2 (0.1)	13 (1.0)	3 (0.2)	8 (0.6)
60-69	2,359	1,892 (80.2)	12 (0.5)	4 (0.2)	36 (1.5)	346 (14.7)	6 (0.3)	15 (0.6)	125 (5.3)	35 (1.5)	52 (2.2)	28 (1.2)	13 (0.6)	18 (0.8)	9 (0.4)	8 (0.3)	4 (0.2)	2 (0.1)	19 (0.8)	12 (0.5)	21 (0.9)
70-79	3,757	2,862 (76.2)	26 (0.7)	7 (0.2)	153 (4.1)	718 (19.1)	8 (0.2)	31 (0.8)	190 (5.1)	25 (0.7)	50 (1.3)	53 (1.4)	22 (0.6)	20 (0.5)	6 (0.2)	27 (0.7)	2 (0.1)	3 (0.1)	56 (1.5)	25 (0.7)	25 (0.7)
80-89	5,317	4,168 (78.4)	29 (0.5)	9 (0.2)	274 (5.2)	1,176 (22.1)	13 (0.2)	13 (0.2)	160 (3.0)	38 (0.7)	46 (0.9)	61 (1.1)	34 (0.6)	15 (0.3)	3 (0.1)	30 (0.6)	0 (0.0)	2 (0.0)	58 (1.1)	20 (0.4)	30 (0.6)
90+	1,691	1,378 (81.5)	5 (0.3)	1 (0.1)	106 (6.3)	417 (24.7)	5 (0.3)	1 (0.1)	21 (1.2)	7 (0.4)	4 (0.2)	15 (0.9)	7 (0.4)	2 (0.1)	0 (0.0)	6 (0.4)	1 (0.1)	0 (0.0)	6 (0.4)	6 (0.4)	8 (0.5)
年 Year	総数 Total																				
1998	41,033	33,981 (82.8)	-	-	505 (1.2)	5,125 (12.5)	251 (0.6)	136 (0.3)	1,469 (3.6)	154 (0.4)	335 (0.8)	385 (0.9)	328 (0.8)	227 (0.6)	78 (0.2)	100 (0.2)	12 (0.0)	25 (0.1)	-	-	692 (1.7)
1999	43,818	36,190 (82.6)	-	-	603 (1.4)	5,586 (12.7)	221 (0.5)	143 (0.3)	1,538 (3.5)	163 (0.4)	345 (0.8)	334 (0.8)	300 (0.7)	179 (0.4)	96 (0.2)	94 (0.2)	13 (0.0)	28 (0.1)	-	-	684 (1.6)
2000	39,384	32,338 (82.1)	-	-	597 (1.5)	5,108 (13.0)	202 (0.5)	123 (0.3)	1,432 (3.6)	158 (0.4)	356 (0.9)	319 (0.8)	272 (0.7)	181 (0.5)	72 (0.2)	123 (0.3)	16 (0.0)	38 (0.1)	-	-	656 (1.7)
2001	35,489	28,868 (81.3)	-	-	642 (1.8)	4,840 (13.6)	162 (0.5)	102 (0.3)	1,368 (3.9)	177 (0.5)	275 (0.8)	276 (0.8)	274 (0.8)	172 (0.5)	72 (0.2)	104 (0.3)	11 (0.0)	25 (0.1)	-	-	619 (1.7)
2002	32,828	26,472 (80.6)	-	-	626 (1.9)	4,666 (14.2)	152 (0.5)	84 (0.3)	1,269 (3.9)	188 (0.6)	323 (1.0)	299 (0.9)	222 (0.7)	148 (0.5)	66 (0.2)	100 (0.3)	19 (0.1)	29 (0.1)	-	-	544 (1.7)
2003	31,638	25,478 (80.5)	-	-	639 (2.0)	4,539 (14.3)	142 (0.4)	83 (0.3)	1,341 (4.2)	149 (0.5)	276 (0.9)	268 (0.8)	223 (0.7)	144 (0.5)	47 (0.1)	87 (0.3)	15 (0.0)	28 (0.1)	-	-	570 (1.8)
2004	29,736	23,829 (80.1)	-	-	617 (2.1)	4,491 (15.1)	125 (0.4)	70 (0.2)	1,293 (4.3)	160 (0.5)	299 (1.0)	275 (0.9)	220 (0.7)	112 (0.4)	53 (0.2)	95 (0.3)	13 (0.0)	30 (0.1)	-	-	564 (1.9)
2005	28,319	22,655 (80.0)	-	-	585 (2.1)	4,338 (15.3)	115 (0.4)	88 (0.3)	1,151 (4.1)	180 (0.6)	296 (1.0)	233 (0.8)	201 (0.7)	130 (0.5)	37 (0.1)	98 (0.3)	11 (0.0)	33 (0.1)	-	-	536 (1.9)
2006	26,384	20,856 (79.0)	-	-	616 (2.3)	4,192 (15.9)	97 (0.4)	79 (0.3)	1,191 (4.5)	127 (0.5)	263 (1.0)	248 (0.9)	231 (0.9)	112 (0.4)	40 (0.2)	109 (0.4)	9 (0.0)	24 (0.1)	-	-	554 (2.1)
2007	25,311	20,264 (80.1)	108 (0.4)	31 (0.1)	602 (2.4)	4,134 (16.3)	75 (0.3)	57 (0.2)	1,186 (4.7)	153 (0.6)	328 (1.3)	232 (0.9)	190 (0.8)	108 (0.4)	34 (0.1)	92 (0.4)	19 (0.1)	18 (0.1)	92 (0.4)	61 (0.2)	281 (1.1)
2008	24,760	19,780 (79.9)	117 (0.5)	43 (0.2)	570 (2.3)	4,001 (16.2)	78 (0.3)	68 (0.3)	1,194 (4.8)	171 (0.7)	292 (1.2)	273 (1.1)	170 (0.7)	121 (0.5)	34 (0.1)	92 (0.4)	13 (0.1)	29 (0.1)	144 (0.6)	80 (0.3)	181 (0.7)
2009	24,170	19,278 (79.8)	121 (0.5)	36 (0.1)	604 (2.5)	3,940 (16.3)	63 (0.3)	73 (0.3)	1,221 (5.1)	162 (0.7)	321 (1.3)	241 (1.0)	182 (0.8)	100 (0.4)	23 (0.1)	121 (0.5)	26 (0.1)	22 (0.1)	168 (0.7)	88 (0.4)	179 (0.7)
2010	23,261	18,735 (80.5)	127 (0.5)	53 (0.2)	598 (2.6)	3,959 (17.0)	48 (0.2)	74 (0.3)	1,158 (5.0)	138 (0.6)	330 (1.4)	239 (1.0)	159 (0.7)	88 (0.4)	35 (0.2)	97 (0.4)	29 (0.1)	12 (0.1)	154 (0.7)	76 (0.3)	171 (0.7)
2011	22,681	17,969 (79.2)	129 (0.6)	57 (0.3)	695 (3.1)	3,929 (17.3)	52 (0.2)	70 (0.3)	1,199 (5.3)	156 (0.7)	317 (1.4)	250 (1.1)	145 (0.6)	83 (0.4)	22 (0.1)	89 (0.4)	27 (0.1)	21 (0.1)	173 (0.8)	89 (0.4)	187 (0.8)
2012	21,283	16,826 (79.1)	107 (0.5)	46 (0.2)	608 (2.9)	3,653 (17.2)	63 (0.3)	134 (0.6)	1,038 (4.9)	152 (0.7)	348 (1.6)	255 (1.2)	157 (0.7)	82 (0.4)	20 (0.1)	97 (0.5)	34 (0.2)	16 (0.1)	176 (0.8)	80 (0.4)	166 (0.8)
2013	20,495	16,380 (79.9)	131 (0.6)	34 (0.2)	635 (3.1)	3,634 (17.7)	48 (0.2)	128 (0.6)	972 (4.7)	181 (0.9)	298 (1.5)	228 (1.1)	138 (0.7)	74 (0.4)	29 (0.1)	87 (0.4)	22 (0.1)	17 (0.1)	190 (0.9)	87 (0.4)	153 (0.7)
2014	19,615	15,586 (79.5)	100 (0.5)	37 (0.2)	642 (3.3)	3,421 (17.4)	41 (0.2)	137 (0.7)	978 (5.0)	184 (0.9)	281 (1.4)	212 (1.1)	132 (0.7)	68 (0.3)	15 (0.1)	101 (0.5)	30 (0.2)	15 (0.1)	207 (1.1)	67 (0.3)	153 (0.8)
2015	18,280	14,581 (79.8)	119 (0.7)	43 (0.2)	631 (3.5)	3,277 (17.9)	46 (0.3)	128 (0.7)	813 (4.4)	166 (0.9)	248 (1.4)	192 (1.1)	98 (0.5)	73 (0.4)	21 (0.1)	87 (0.5)	20 (0.1)	19 (0.1)	176 (1.0)	69 (0.4)	134 (0.7)

注1: 結核病種別は重複あり。 Note 1: Cases having multiple organs are counted independently.

注2: 括弧内は各性・年齢階層、登録年の新登録患者数に対する割合(%)。 Note 2: Numbers in brackets indicate the proportion out of the total number of newly notified tuberculosis cases (all forms) for each sex and age group.

表3.2 粟粒結核患者数・割合、性・年齢階層別、2004～2015年

Table 3.2 Number and proportion of miliary tuberculosis by age group and sex, 2004-2015

年 year		年齢総数 Age group tota		0～9歳 0-9 yrs	10～19歳 10-19 yrs	20～29歳 20-29 yrs	30～39歳 30-39 yrs	40～49歳 40-49 yrs	50～59歳 50-59 yrs	60～69歳 60-69 yrs	70～79歳 70-79 yrs	80歳以上 80 yrs+
		数 n	割合(%)	数 n	割合(%)	数 n	割合(%)	数 n	割合(%)	数 n	割合(%)	数 n
男女計 Total	2004	617 (2.1)		0 (0.0)	6 (1.8)	19 (0.8)	22 (0.8)	24 (1.0)	44 (1.1)	82 (1.8)	199 (2.9)	221 (3.6)
	2005	585 (2.1)		1 (1.3)	3 (0.9)	13 (0.6)	38 (1.4)	25 (1.1)	41 (1.1)	77 (1.8)	180 (2.8)	207 (3.2)
	2006	616 (2.3)		1 (1.9)	1 (0.4)	19 (0.9)	24 (1.0)	27 (1.3)	42 (1.3)	84 (2.2)	173 (2.8)	245 (3.9)
	2007	602 (2.4)		0 (0.0)	2 (0.9)	10 (0.5)	20 (0.9)	23 (1.2)	26 (0.9)	75 (2.0)	190 (3.4)	256 (4.0)
	2008	570 (2.3)		1 (1.4)	1 (0.5)	17 (0.9)	18 (0.8)	21 (1.1)	40 (1.4)	64 (1.7)	162 (2.9)	246 (3.7)
	2009	604 (2.5)		3 (6.4)	2 (0.9)	6 (0.4)	26 (1.2)	25 (1.4)	38 (1.5)	68 (1.9)	164 (3.2)	272 (3.9)
	2010	598 (2.6)		0 (0.0)	2 (0.7)	11 (0.7)	20 (1.0)	22 (1.2)	23 (1.1)	80 (2.2)	139 (2.8)	301 (4.4)
	2011	695 (3.1)		1 (1.9)	2 (1.1)	18 (1.3)	21 (1.2)	28 (1.5)	27 (1.3)	58 (1.8)	155 (3.2)	385 (5.3)
	2012	608 (2.9)		0 (0.0)	2 (1.1)	4 (0.3)	10 (0.7)	20 (1.3)	28 (1.6)	53 (1.8)	147 (3.2)	344 (4.8)
	2013	635 (3.1)		0 (0.0)	4 (2.1)	9 (0.8)	21 (1.6)	15 (1.0)	23 (1.4)	59 (2.1)	151 (3.5)	353 (4.8)
	2014	642 (3.3)		1 (3.1)	2 (1.1)	7 (0.6)	15 (1.2)	12 (0.8)	23 (1.5)	53 (2.0)	133 (3.3)	396 (5.4)
	2015	631 (3.5)		0 (0.0)	2 (1.1)	11 (1.0)	8 (0.7)	24 (1.8)	17 (1.3)	36 (1.5)	153 (4.1)	380 (5.4)
男 Males	2004	282 (1.5)		0 (0.0)	2 (1.3)	10 (0.8)	15 (0.9)	21 (1.3)	32 (1.1)	49 (1.5)	78 (1.7)	75 (2.1)
	2005	269 (1.5)		1 (2.2)	2 (1.2)	7 (0.6)	24 (1.5)	15 (1.0)	23 (0.8)	47 (1.5)	83 (2.0)	67 (1.8)
	2006	309 (1.8)		0 (0.0)	1 (0.9)	12 (1.1)	17 (1.3)	23 (1.6)	34 (1.3)	55 (2.0)	78 (1.9)	89 (2.4)
	2007	250 (1.5)		0 (0.0)	2 (1.8)	6 (0.6)	13 (1.0)	14 (1.1)	16 (0.7)	45 (1.7)	76 (2.0)	78 (2.0)
	2008	241 (1.5)		0 (0.0)	1 (0.9)	13 (1.4)	12 (1.0)	17 (1.4)	26 (1.3)	39 (1.5)	65 (1.8)	68 (1.8)
	2009	211 (1.4)		0 (0.0)	1 (1.0)	2 (0.2)	18 (1.6)	18 (1.5)	21 (1.2)	26 (1.0)	57 (1.7)	68 (1.7)
	2010	232 (1.6)		0 (0.0)	2 (1.3)	7 (0.8)	11 (1.1)	19 (1.6)	14 (0.9)	40 (1.5)	54 (1.7)	85 (2.1)
	2011	283 (2.0)		1 (4.2)	0 (0.0)	12 (1.6)	14 (1.6)	17 (1.5)	18 (1.2)	34 (1.5)	66 (2.1)	121 (2.9)
	2012	243 (1.9)		0 (0.0)	1 (1.0)	4 (0.6)	7 (0.8)	17 (1.7)	22 (1.7)	33 (1.6)	46 (1.6)	113 (2.8)
	2013	234 (1.9)		0 (0.0)	2 (2.0)	2 (0.3)	14 (2.0)	7 (0.8)	12 (1.0)	34 (1.7)	52 (1.8)	111 (2.7)
	2014	249 (2.1)		0 (0.0)	1 (1.1)	3 (0.5)	7 (1.0)	7 (0.8)	9 (0.9)	41 (2.2)	66 (2.5)	115 (2.8)
	2015	231 (2.1)		0 (0.0)	1 (1.1)	6 (1.0)	7 (1.2)	19 (2.3)	11 (1.2)	20 (1.2)	65 (2.6)	102 (2.7)
女 Females	2004	335 (3.2)		0 (0.0)	4 (2.2)	9 (0.7)	7 (0.6)	3 (0.4)	12 (1.2)	33 (2.4)	121 (5.3)	146 (5.5)
	2005	316 (3.1)		0 (0.0)	1 (0.6)	6 (0.5)	14 (1.3)	10 (1.5)	18 (2.0)	30 (2.5)	97 (4.5)	140 (5.3)
	2006	307 (3.3)		1 (4.0)	0 (0.0)	7 (0.7)	7 (0.7)	4 (0.6)	8 (1.0)	29 (2.8)	95 (4.6)	156 (6.1)
	2007	352 (3.9)		0 (0.0)	0 (0.0)	4 (0.4)	7 (0.7)	9 (1.4)	10 (1.4)	30 (2.9)	114 (5.9)	178 (6.7)
	2008	329 (3.6)		1 (3.3)	0 (0.0)	4 (0.4)	6 (0.6)	4 (0.6)	14 (2.0)	25 (2.4)	97 (5.2)	178 (6.4)
	2009	393 (4.3)		3 (10.7)	1 (0.8)	4 (0.5)	8 (0.8)	7 (1.0)	17 (2.3)	42 (4.2)	107 (5.9)	204 (6.7)
	2010	366 (4.2)		0 (0.0)	0 (0.0)	4 (0.6)	9 (1.0)	3 (0.5)	9 (1.5)	40 (4.0)	85 (4.9)	216 (7.3)
	2011	412 (4.7)		0 (0.0)	2 (2.0)	6 (0.9)	7 (0.8)	11 (1.7)	9 (1.5)	24 (2.5)	89 (5.2)	264 (8.5)
	2012	365 (4.4)		0 (0.0)	1 (1.2)	0 (0.0)	3 (0.4)	3 (0.5)	6 (1.2)	20 (2.3)	101 (6.1)	231 (7.1)
	2013	401 (5.0)		0 (0.0)	2 (2.2)	7 (1.2)	7 (1.2)	8 (1.4)	11 (2.1)	25 (3.0)	99 (6.4)	242 (7.4)
	2014	393 (5.2)		1 (6.3)	1 (1.1)	4 (0.7)	8 (1.4)	5 (0.9)	14 (2.8)	12 (1.6)	67 (4.9)	281 (8.7)
	2015	400 (5.6)		0 (0.0)	1 (1.2)	5 (1.0)	1 (0.2)	5 (1.0)	6 (1.4)	16 (2.5)	88 (6.8)	278 (8.8)

注1: 他結核病類との重複あり。 Note1: Cases having multiple organs are counted independently.

注2: 割合は各年齢階層新登録患者数に対する割合。 Note2: % indicate proportion out of the total number of newly notified tuberculosis cases for each age group.

【外国生れ】

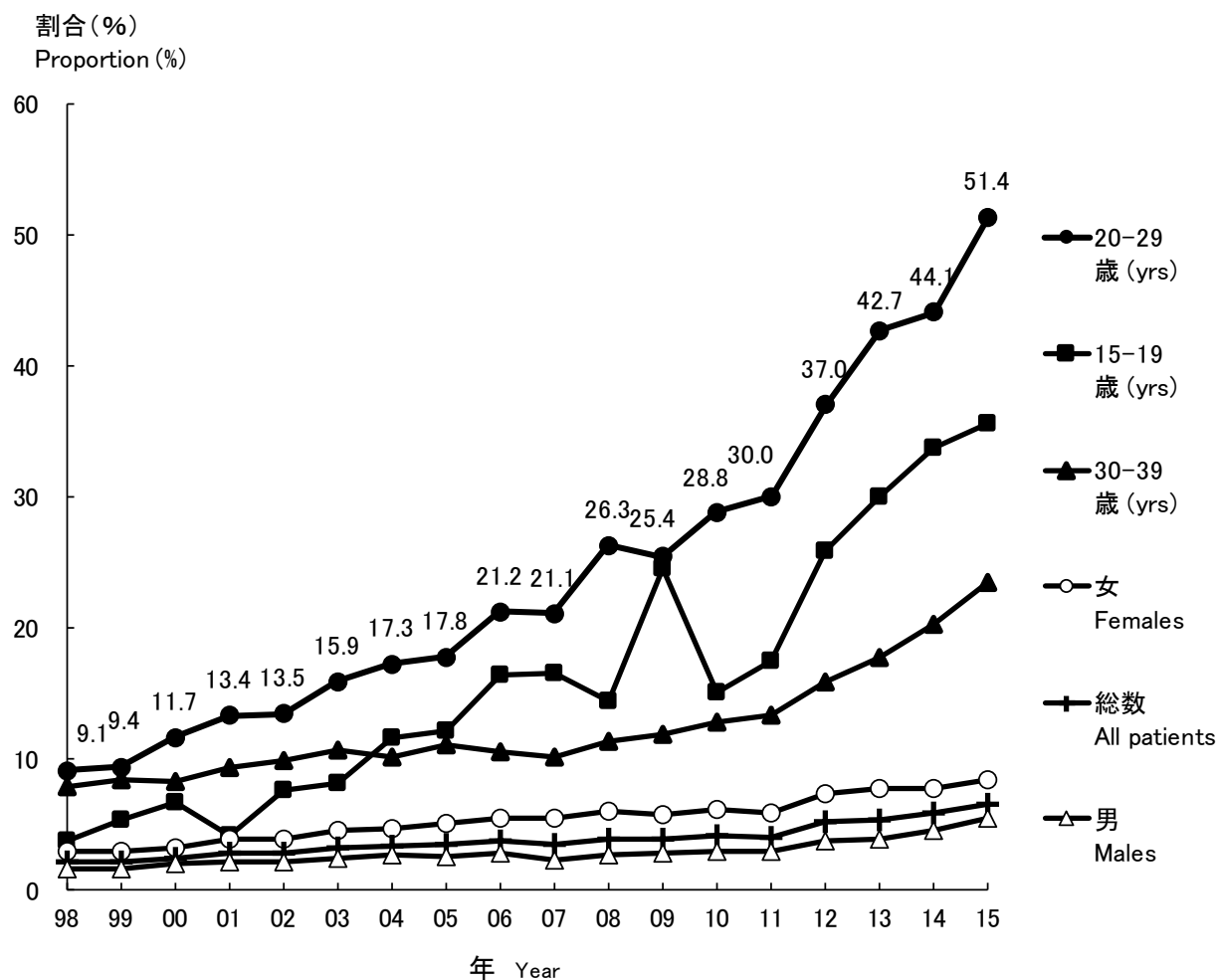


図 3 新登録結核患者に占める外国生まれ結核患者割合の推移, 性別・特定年齢階層別, 1998~2015年
 Fig. 3 Annual trend of proportion of foreign-borns among newly notified tuberculosis patients, by sex and age group, from 1998 to 2015

割合: 国籍または出生国不明を除く。

Those whose country of birth is unknown are excluded from the numerator.

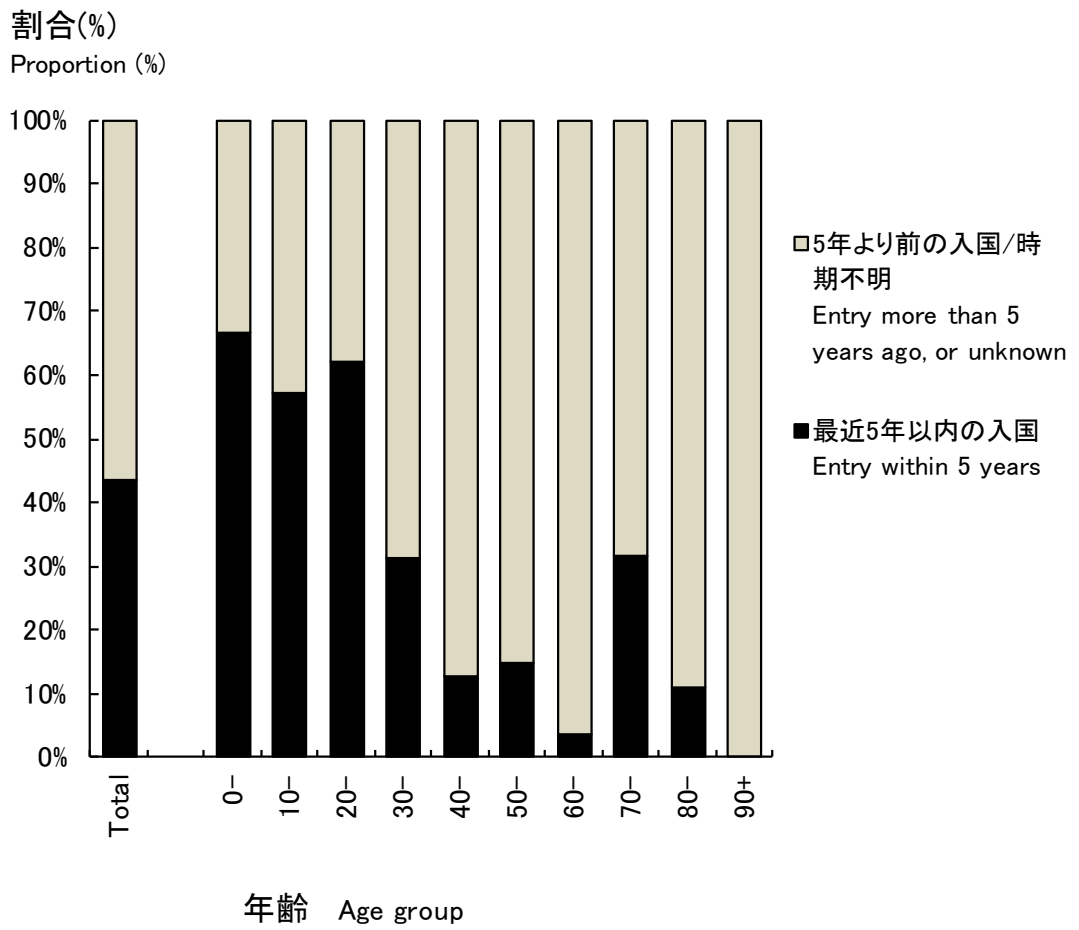


図4 外国生まれ結核患者の入国時期別割合、年齢階層別、2015年

Fig. 4 Proportion of foreign-born tuberculosis patients, by age group and time of entry to Japan, in 2015

表4.1 新登録全結核患者の発生動向年次推移, 国籍または出生国別, 性別, 1998~2015年
 Table 4.1 Annual trend of newly notified tuberculosis patients by nationality or country of birth, and by sex, from 1998 to 2015

暦年 Year	新登録全結核 患者数 Number of newly notified tuberculosis patients, all forms	日本生まれ Born in Japan	外国籍もしくは 外国生まれ Foreign nationalities or Foreign borns (*1)	国籍または 出生国不明 Nationalities or country of birth unknown	外国生まれ 割合 (%) Proportion of foreign borns (%)(*2)	性 Sex (*3)		女-男比 Ratio of Females to Males
						男 Males	女 Females	
1998	41,033	34,382	739	5,912	2.1	365	374	1.0
1999	43,818	37,094	821	5,903	2.2	415	406	1.0
2000	39,384	33,720	837	4,827	2.4	436	401	0.9
2001	35,489	30,305	866	4,318	2.8	442	424	1.0
2002	32,828	28,667	824	3,337	2.8	411	413	1.0
2003	31,638	27,665	906	3,067	3.2	433	473	1.1
2004	29,736	26,205	931	2,600	3.4	479	452	0.9
2005	28,319	25,247	923	2,149	3.5	438	485	1.1
2006	26,384	23,505	920	1,959	3.8	444	476	1.1
2007	25,311	23,451	842	1,018	3.5	364	478	1.3
2008	24,760	23,163	945	652	3.9	416	529	1.3
2009	24,170	22,808	938	424	4.0	414	524	1.3
2010	23,261	21,976	952	333	4.2	424	528	1.2
2011	22,681	21,372	921	388	4.1	416	505	1.2
2012	21,283	19,555	1,069	659	5.2	474	595	1.3
2013	20,495	18,589	1,064	842	5.4	468	596	1.3
2014	19,615	17,727	1,101	787	5.8	531	570	1.1
2015	18,280	16,396	1,164	720	6.6	581	583	1.0

*1: 2011年までは外国籍結核患者数、2012年以降外国生まれ結核患者数。

Number of tuberculosis patients with foreign nationalities until 2011, number of foreign-born patients afterwards.

*2: 2011年までは外国籍患者割合、2012年以降外国生まれ患者割合(国籍または出生国不明を除く)。Proportion of Tuberculosis patients with foreign nationalities until 2011, proportion of foreign-born patients afterwards, excluding those of unknown nationality or country of birth.

*3: 外国籍または外国生まれにおける性別。

Sex distribution among foreign nationalities or foreign-borns.

表4.2 新登録外国人結核患者数・割合、年齢階層別、1998～2015年
Table 4.2 Annual trend of foreign-borns by age group, 1998-2015

年 year	年齢 Age group	0～9歳 0-9 yrs		10～19歳 10-19 yrs		20～29歳 20-29 yrs		30～39歳 30-39 yrs		40～49歳 40-49 yrs		50～59歳 50-59 yrs		60～69歳 60-69 yrs		70～79歳 70-79 yrs		80歳以上 80 yrs+	
		総数 Total	数n 割合(%)	数n 割合(%)	数n 割合(%)	数n 割合(%)	数n 割合(%)	数n 割合(%)	数n 割合(%)	数n 割合(%)	数n 割合(%)	数n 割合(%)	数n 割合(%)	数n 割合(%)	数n 割合(%)	数n 割合(%)	数n 割合(%)	数n 割合(%)	数n 割合(%)
1998	739	6	(0.8)	20	(2.7)	300	(40.6)	215	(29.1)	83	(11.2)	44	(6.0)	23	(3.1)	29	(3.9)	19	(2.6)
1999	821	11	(1.3)	27	(3.3)	319	(38.9)	241	(29.4)	89	(10.8)	54	(6.6)	27	(3.3)	35	(4.3)	18	(2.2)
2000	837	14	(1.7)	26	(3.1)	357	(42.7)	235	(28.1)	92	(11.0)	49	(5.9)	23	(2.7)	27	(3.2)	14	(1.7)
2001	866	4	(0.5)	17	(2.0)	361	(41.7)	249	(28.8)	110	(12.7)	55	(6.4)	27	(3.1)	25	(2.9)	18	(2.1)
2002	824	5	(0.6)	24	(2.9)	345	(41.9)	249	(30.2)	81	(9.8)	47	(5.7)	26	(3.2)	24	(2.9)	23	(2.8)
2003	906	9	(1.0)	25	(2.8)	399	(44.0)	268	(29.6)	98	(10.8)	38	(4.2)	22	(2.4)	27	(3.0)	20	(2.2)
2004	931	4	(0.4)	32	(3.4)	402	(43.2)	250	(26.9)	107	(11.5)	59	(6.3)	28	(3.0)	27	(2.9)	22	(2.4)
2005	923	5	(0.5)	37	(4.0)	378	(41.0)	273	(29.6)	105	(11.4)	62	(6.7)	26	(2.8)	16	(1.7)	21	(2.3)
2006	920	5	(0.5)	34	(3.7)	409	(44.5)	234	(25.4)	113	(12.3)	59	(6.4)	35	(3.8)	11	(1.2)	20	(2.2)
2007	842	6	(0.7)	35	(4.2)	390	(46.3)	224	(26.6)	102	(12.1)	43	(5.1)	15	(1.8)	12	(1.4)	15	(1.8)
2008	945	4	(0.4)	27	(2.9)	468	(49.5)	237	(25.1)	114	(12.1)	41	(4.3)	25	(2.6)	10	(1.1)	19	(2.0)
2009	938	2	(0.2)	50	(5.3)	427	(45.5)	243	(25.9)	103	(11.0)	41	(4.4)	30	(3.2)	20	(2.1)	22	(2.3)
2010	952	5	(0.5)	41	(4.3)	438	(46.0)	242	(25.4)	114	(12.0)	39	(4.1)	35	(3.7)	18	(1.9)	20	(2.1)
2011	921	5	(0.5)	30	(3.3)	419	(45.5)	226	(24.5)	126	(13.7)	53	(5.8)	20	(2.2)	19	(2.1)	23	(2.5)
2012	1,069	4	(0.4)	45	(4.2)	468	(43.8)	237	(22.2)	181	(16.9)	63	(5.9)	33	(3.1)	17	(1.6)	21	(2.0)
2013	1,064	3	(0.3)	52	(4.9)	494	(46.4)	225	(21.1)	147	(13.8)	65	(6.1)	30	(2.8)	25	(2.3)	23	(2.2)
2014	1,101	5	(0.5)	59	(5.4)	511	(46.4)	243	(22.1)	151	(13.7)	71	(6.4)	26	(2.4)	16	(1.5)	19	(1.7)
2015	1,164	3	(0.3)	63	(5.4)	565	(48.5)	252	(21.6)	134	(11.5)	74	(6.4)	27	(2.3)	19	(1.6)	27	(2.3)

注1:割合は新登録外国人結核患者総数に対する各年齢階層患者数の割合

Note1: % indicate proportion out of the total number of newly notified foreign-born tuberculosis cases for each age group.

注2: 2011年までは外国国籍患者数。2012年以降は外国生まれ患者数

Note2: "Foreign nationalities" until 2011, "Foreign-born" since 2012.

表5 外国生まれ結核患者及び薬剤耐性結核の数および割合、出生国別、入国時期別 2015年
Table 5 Number and proportion of foreign-born tuberculosis patients by country of birth and time of entry to Japan, 2015

総数 Total	薬剤耐性 Drug resistance					最近5年以内入国 Entry within 5 years	薬剤耐性 Drug resistance					5年以上前入国/時期不明 Entry more than 5 years ago, or unknown	薬剤耐性 Drug resistance																			
	n	(%)	多剤耐性 MDR	INH 耐性 INH resistance	Any RFP 耐性 Any RFP resistance		Any 1剤以上耐性 Any resistance*	n	(%)	多剤耐性 MDR	INH 耐性 Any INH resistance		RFP 耐性 RFP resistance	Any 1剤以上耐性 Any resistance*	n	(%)	多剤耐性 MDR	INH 耐性 Any INH resistance	RFP 耐性 RFP resistance	Any 1剤以上耐性 Any resistance*												
総数 Total	1,164	(100.0)	16	(100.0)	49	(100.0)	22	(100.0)	54	(100.0)	総数 Total	437	(100.0)	9	(100.0)	23	(100.0)	13	(100.0)	24	(100.0)	総数 Total	659	(100.0)	7	(100.0)	26	(100.0)	9	(100.0)	30	(100.0)
フィリピン Philippines	284	(24.4)	3	(18.8)	15	(30.6)	4	(18.2)	17	(31.5)	中国 China	124	(28.4)	5	(55.6)	12	(52.2)	7	(53.8)	12	(50.0)	フィリピン Philippines	204	(31.0)	2	(28.6)	11	(42.3)	2	(22.2)	12	(40.0)
中国 China	249	(21.4)	8	(50.0)	18	(36.7)	12	(54.5)	18	(33.3)	ベトナム Vietnam	95	(21.7)	2	(22.2)	6	(26.1)	2	(15.4)	6	(25.0)	中国 China	125	(19.0)	3	(42.9)	6	(23.1)	5	(55.6)	6	(20.0)
ベトナム Vietnam	135	(11.6)	2	(12.5)	7	(14.3)	2	(9.1)	7	(13.0)	フィリピン Philippines	80	(18.3)	1	(11.1)	4	(17.4)	2	(15.4)	5	(20.8)	ベトナム Vietnam	40	(6.1)			1	(3.8)			1	(3.3)
ネパール Nepal	108	(9.3)									ネパール Nepal	69	(15.8)									ネパール Nepal	39	(5.9)								
インドネシア Indonesia	78	(6.7)	1	(6.3)	1	(2.0)	1	(4.5)	1	(1.9)	インドネシア Indonesia	46	(10.5)	1	(11.1)	1	(4.3)	1	(7.7)	1	(4.2)	韓国 Republic of Korea	35	(5.3)								
韓国 Republic of Korea	42	(3.6)					1	(4.5)			ミャンマー Myanmar	15	(3.4)									インドネシア Indonesia	32	(4.9)								
タイ Thailand	28	(2.4)									タイ Thailand	10	(2.3)									タイ Thailand	18	(2.7)								
ミャンマー Myanmar	23	(2.0)	2	(12.5)	2	(4.1)	2	(9.1)	2	(3.7)	その他 Others	53	(12.1)				1	(7.7)			ブラジル Brazil	15	(2.3)			1	(3.8)			2	(6.7)	
インド India	21	(1.8)			1	(2.0)			1	(1.9)	国名不明 Unknown	13	(3.0)								インド India	14	(2.1)			1	(3.8)			1	(3.3)	
ブラジル Brazil	18	(1.5)			1	(2.0)			2	(3.7)											ペルー Peru	13	(2.0)									
ペルー Peru	13	(1.1)																														
モンゴル Mongolia	12	(1.0)																														
カンボジア Cambodia	10	(0.9)			1	(2.0)			1	(1.9)																						
その他 Others	65	(5.6)							1	(1.9)																						
国名不明 Unknown	78	(6.7)			3	(6.1)			4	(7.4)																						

国名:10名以上患者発生届けのあった国名を掲載 Only those countries with more than ten tuberculosis cases are listed.

MDR: Multi-drug resistant, i.e., resistant to at least INH and RFP INH: isoniazid RFP: rifampicin

*: INH, RFP, SM EBの4剤のうちのいずれかに耐性 resistant to either INH, RFP, SM, or EB

表6 職業分類別外国生まれ結核患者数、性別・年齢階層別、2015年
Table 6 Occupation of foreign-born tuberculosis patients by sex and age group, in Japan, in 2015

年齢 Age group	総数 Total	(%)	接客業 Service trade workers	(%)	医療職 Health care workers	(%)	教員・ 保育士 Teachers / Nursery staff	(%)	乳幼児 ・児童 Infants / Children	(%)	生徒・ 学生 Students	(%)	他常用勤 労者 Other regular employees	(%)	他臨時雇 ・日雇 Other temporary / day laborer	(%)	他自営・ 自由業 Other self- employed	(%)	家事 従業者 Housekee pers	(%)	無職・ その他 Unemplo- yed / Others	(%)	不明 Unknown	(%)
総数 Total	1,164	(100)	50	(4)	21	(2)	8	(1)	9	(1)	310	(27)	332	(29)	121	(10)	15	(1)	40	(3)	215	(18)	43	(4)
男 Males	581	(100)	13	(2)	5	(1)	4	(1)	6	(1)	196	(34)	187	(32)	47	(8)	6	(1)	2		94	(16)	21	(4)
女 Females	583	(100)	37	(6)	16	(3)	4	(1)	3	(1)	114	(20)	145	(25)	74	(13)	9	(2)	38	(7)	121	(21)	22	(4)
0-14	9	(100)	-		-		-		9	(100)	-		-		-		-		-		-		-	
15-19	57	(100)	1	(2)	-		-		-		40	(70)	5	(9)	5	(9)	-		1	(2)	5	(9)	-	
20-24	296	(100)	4	(1)	3	(1)	-		-		158	(53)	73	(25)	24	(8)	2	(1)	2	(1)	25	(8)	5	(2)
25-29	269	(100)	10	(4)	8	(3)	1	(0)	-		89	(33)	92	(34)	24	(9)	2	(1)	6	(2)	29	(11)	8	(3)
30-34	154	(100)	10	(6)	-		2	(1)	-		19	(12)	56	(36)	18	(12)	-		12	(8)	31	(20)	6	(4)
35-39	98	(100)	7	(7)	4	(4)	1	(1)	-		4	(4)	35	(36)	16	(16)	2	(2)	8	(8)	16	(16)	5	(5)
40-44	76	(100)	7	(9)	2	(3)	-		-		-		26	(34)	13	(17)	-		7	(9)	17	(22)	4	(5)
45-49	58	(100)	4	(7)	1	(2)	-		-		-		25	(43)	7	(12)	2	(3)	-		13	(22)	6	(10)
50-54	43	(100)	1	(2)	2	(5)	2	(5)	-		-		9	(21)	5	(12)	1	(2)	4	(9)	14	(33)	5	(12)
55-59	31	(100)	5	(16)	-		1	(3)	-		-		7	(23)	5	(16)	2	(6)	-		10	(32)	1	(3)
60+	73	(100)	1	(1)	1	(1)	1	(1)	-		-		4	(5)	4	(5)	4	(5)	-		55	(75)	3	(4)

旧表 外国人新登録結核患者の発生動向, 暦年別, 年齢階層別, 1998~2015年
 Previous table Trend of newly notified foreign nationals with TB by year and age group, 1998-2015

暦年 Year	外国人 All	年齢 Age group							20歳代 割合
		0-14	15-19	20-29	30-39	40-49	50-59	60+	
1998	739	11	15	300	215	83	44	71	40.6%
1999	821	13	25	319	241	89	54	80	38.9
2000	837	16	24	357	235	92	49	64	42.7
2001	866	6	15	361	249	110	55	70	41.7
2002	824	6	23	345	249	81	47	73	41.9
2003	906	12	22	399	268	98	38	69	44.0
2004	931	6	30	402	250	107	59	77	43.2
2005	923	9	33	378	273	105	62	63	41.0
2006	920	6	33	409	234	113	59	66	44.5
2007	842	9	32	390	224	102	43	42	46.3
2008	945	5	26	468	237	114	41	54	49.5
2009	938	3	49	427	243	103	41	72	45.5
2010	952	9	37	438	242	114	39	73	46.0
2011	921	8	27	419	226	126	53	62	45.5
2012	1069	7	42	468	237	181	63	71	43.8
2013	1064	7	48	494	225	147	65	78	46.4
2014	1101	8	56	511	243	151	71	61	46.4
2015	1164	9	57	565	252	134	74	73	48.5

2011年までは外国籍結核患者数、2012年以降外国生まれ結核患者数

Number of tuberculosis patients with foreign nationalities until 2011, number of foreign-born patients afterwards.

旧表 都道府県・政令指定都市別外国人結核患者数, 2015年
 Previous table Distribution of foreign nationals with
 tuberculosis by prefecture and designated city, 2015

		新登録患者数 Newly notified patients	外国生まれ Foreign born	割合 Proportion (%)
全国	Japan	18,280	1,164	6.4
長野県	Nagano	175	21	12.0
群馬県	Gunma	192	23	12.0
仙台市	Sendai city	93	11	11.8
栃木県	Tochigi	229	27	11.8
相模原市	Sagamihara city	79	9	11.4
東京都	Tokyo	2,306	256	11.1
愛知県	Aichi	685	76	11.1
三重県	Mie	244	27	11.1
静岡県	Shizuoka	257	28	10.9
福岡市	Fukuoka city	222	24	10.8
広島県	Hiroshima	208	21	10.1
島根県	Shimane	102	10	9.8
福井県	Fukui	72	7	9.7
山梨県	Yamanashi	73	7	9.6
岐阜県	Gifu	314	29	9.2
富山県	Toyama	125	11	8.8
静岡市	Shizuoka city	107	9	8.4
滋賀県	Shiga	157	13	8.3
名古屋市	Nagoya city	514	42	8.2
千葉県	Chiba	721	58	8.0
川崎市	Kawasaki city	226	18	8.0
埼玉県	Saitama	787	62	7.9
岡山県	Okayama	154	12	7.8
浜松市	Hamamatsu city	78	6	7.7
茨城県	Ibaraki	345	26	7.5
新潟県	Niigata	146	11	7.5
岡山市	Okayama city	81	6	7.4
香川県	Kagawa	144	9	6.3
石川県	Ishikawa	149	9	6.0
広島市	Hiroshima city	116	7	6.0
横浜市	Yokohama city	565	32	5.7
徳島県	Tokushima	106	6	5.7

外国人患者が5.5%以上(国籍不明を含む)の県・市を掲載。政令指定都市は県に含まず(別掲)

Those prefectures and designated cities with 5% or more tuberculosis cases with foreign nationals are listed.

The figures of prefectures do not include those cases registered to designated cities in the respective prefecture, if applicable.

E.g., the figure of Kanagawa prefecture does not include those of Yokohama and Kawasaki cities.