

【患者発見】

表1 新登録結核患者の発見方法、2007~2015年

Table1 Proportion of mode of detection among newly notified tuberculosis patients, 2007-2015

年 Year	新登録 患者 Newly notified TB patients	個別 健診 Individual medical checkup	定期健診 Mass screening										接触者健診 Contact examination				医療機関 Medical institutions						その他 Others		不明 Unknown	
			学校 Schools		住民 Residents		職場 Employees		施設 Facilities		家族 Family		その他 Others		有症状受診(*1) Outpatients with TB symptoms(*1)		入院中 Inpatients with other diseases		通院中 Outpatients with other diseases		n	%	n	%		
			n	%	n	%	n	%	n	%	n	%	n	%	n	%	n	%	n	%					n	%
2007	25,311	537	2.1	217	0.9	636	2.5	1,931	7.6	145	0.6	355	1.4	370	1.5	16,997	67.2	2,031	8.0	1,611	6.4	340	1.3	141	0.6	
2008	24,760	639	2.6	195	0.8	486	2.0	1,877	7.6	144	0.6	325	1.3	410	1.7	15,347	62.0	2,681	10.8	2,100	8.5	316	1.3	240	1.0	
2009	24,170	611	2.5	197	0.8	550	2.3	1,749	7.2	136	0.6	324	1.3	311	1.3	14,864	61.5	2,752	11.4	2,220	9.2	301	1.2	155	0.6	
2010	23,261	507	2.2	244	1.0	544	2.3	1,618	7.0	128	0.6	313	1.3	350	1.5	13,901	59.8	2,792	12.0	2,305	9.9	333	1.4	226	1.0	
2011	22,681	470	2.1	188	0.8	497	2.2	1,531	6.8	126	0.6	354	1.6	482	2.1	13,177	58.1	2,916	12.9	2,515	11.1	330	1.5	95	0.4	
2012	21,283	409	1.9	163	0.8	498	2.3	1,424	6.7	121	0.6	315	1.5	374	1.8	12,284	57.7	2,941	13.8	2,312	10.9	357	1.7	85	0.4	
2013	20,495	413	2.0	172	0.8	455	2.2	1,246	6.1	89	0.4	314	1.5	333	1.6	11,978	58.4	2,745	13.4	2,306	11.3	336	1.6	108	0.5	
2014	19,615	344	1.8	201	1.0	404	2.1	1,221	6.2	92	0.5	303	1.5	333	1.7	11,441	58.3	2,591	13.2	2,210	11.3	328	1.7	147	0.7	
2015	18,280	319	1.7	192	1.1	359	2.0	1,147	6.3	78	0.4	248	1.4	263	1.4	10,556	57.7	2,630	14.4	2,043	11.2	144	0.8	127	0.7	
2015年																										
Age group																										
0~9	38	1	2.6	0	0.0	0	0.0	0	0.0	0	0.0	20	52.6	3	7.9	12	31.6	0	0.0	0	0.0	2	5.3		0.0	
10~19	176	6	3.4	40	22.7	0	0.0	3	1.7	0	0.0	20	11.4	9	5.1	85	48.3	5	2.8	4	2.3	1	0.6		0.0	
20~29	1,127	29	2.6	139	12.3	2	0.2	247	21.9	5	0.4	27	2.4	61	5.4	539	47.8	25	2.2	13	1.2	6	0.5	9	0.8	
30~39	1,101	18	1.6	9	0.8	4	0.4	264	24.0	3	0.3	18	1.6	46	4.2	637	57.9	25	2.3	42	3.8	7	0.6	12	1.1	
40~49	1,363	41	3.0	3	0.2	19	1.4	266	19.5	4	0.3	29	2.1	37	2.7	791	58.0	44	3.2	89	6.5	12	0.9	12	0.9	
50~59	1,351	37	2.7	1	0.1	18	1.3	200	14.8	6	0.4	31	2.3	34	2.5	778	57.6	83	6.1	112	8.3	23	1.7	8	0.6	
60~69	2,359	65	2.8	0	0.0	77	3.3	141	6.0	6	0.3	36	1.5	34	1.4	1,302	55.2	270	11.4	341	14.5	33	1.4	22	0.9	
70~79	3,757	72	1.9	0	0.0	120	3.2	24	0.6	16	0.4	34	0.9	16	0.4	2,149	57.2	627	16.7	621	16.5	20	0.5	31	0.8	
80~89	5,317	31	0.6	0	0.0	111	2.1	2	0.0	18	0.3	28	0.5	12	0.2	3,206	60.3	1,123	21.1	708	13.3	30	0.6	23	0.4	
90~	1,691	19	1.1	0	0.0	8	0.5	0	0.0	20	1.2	5	0.3	11	0.7	1,057	62.5	428	25.3	113	6.7	10	0.6	10	0.6	

*1 有症状・咳・痰・血痰・咯血等の「呼吸器症状」や、喘鳴、胸痛、背部痛、息切れ、発熱、寝汗、全身倦怠、体重減少等の「その他の症状」を有する場合。
 TB symptoms: Respiratory symptoms such as cough, sputum expectoration, bloody sputum, and hemoptysis; and other symptoms such as wheezing, chest pain, back pain, dyspnea, fever, night sweating, fatigue tendency, and weight loss.
 総数には、その他集団検診81名、登録中の健康診断93名がある。

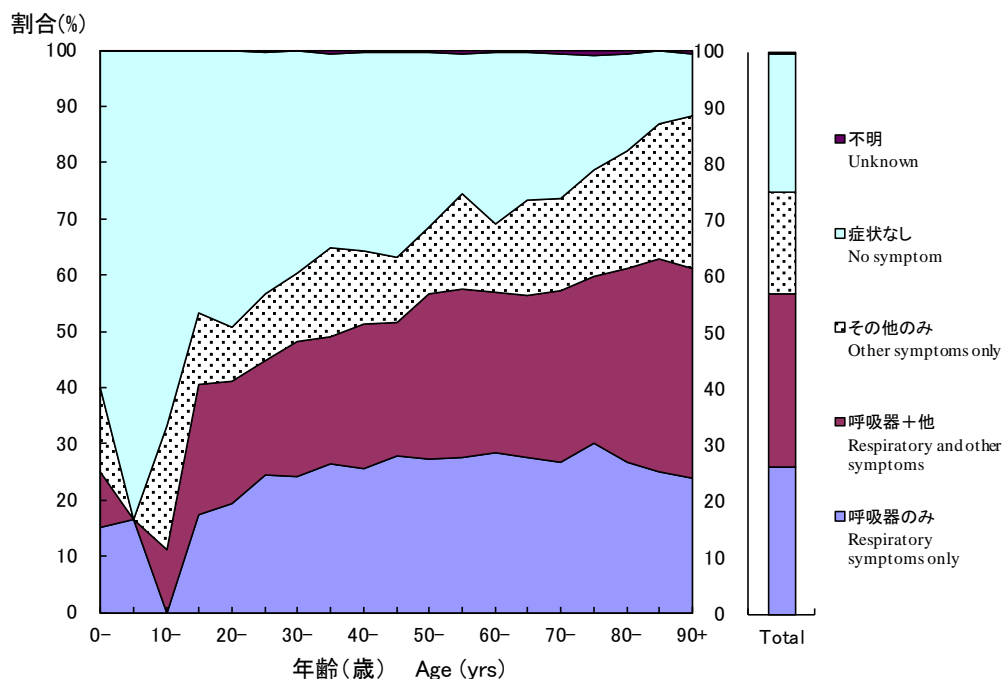


図1 新登録肺結核中 年齢5歳階層別症状の有無、2015年

Fig.1 Proportion of symptoms among newly notified pulmonary tuberculosis patients by 5- years age group, in 2015

呼吸器症状は咳、痰、血痰、咯血を含む。その他の症状は喘鳴、胸痛、背部痛、息切れ、発熱、寝汗、全身倦怠、体重減少を含む。
 Respiratory symptoms include cough, sputum expectoration, bloody sputum, and hemoptysis. Other symptoms include wheezing, chest pain, back pain, dyspnea, fever, night sweating, fatigue tendency, and weight loss.

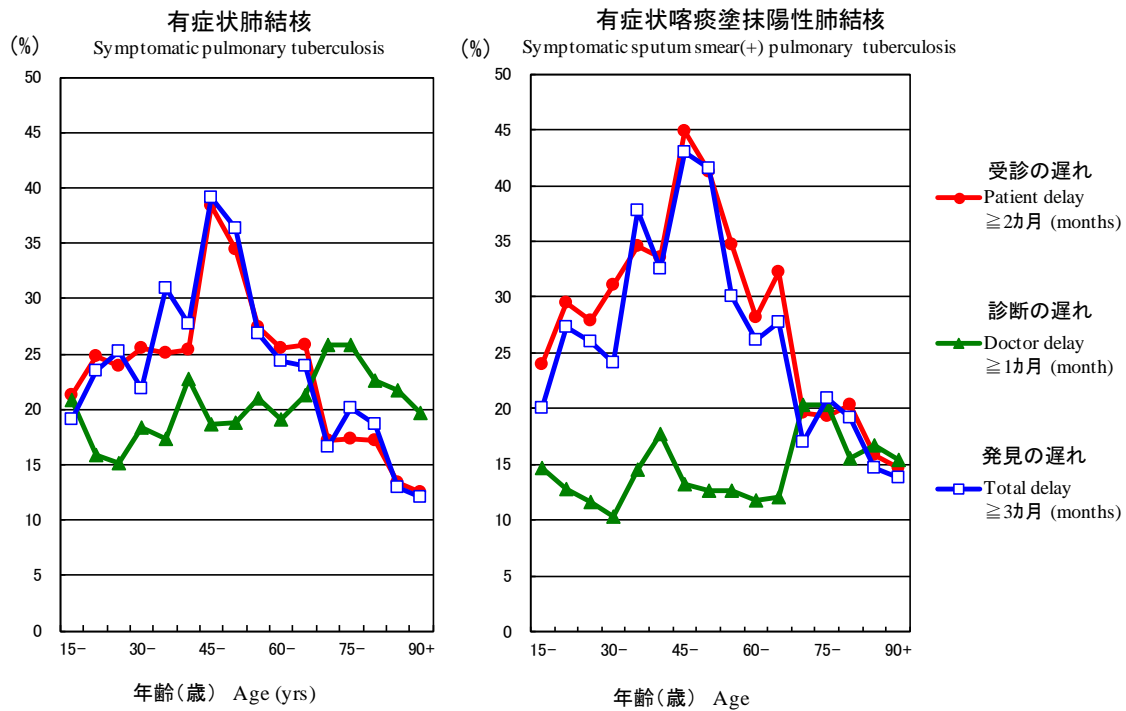


図2 新登録有症状肺結核中年齢5歳階層別発見の遅れの割合、2015年
Fig.2 Proportion of patient delay, doctor delay and total delay among symptomatic pulmonary tuberculosis patients by 5-year age group, in 2015

受診の遅れ:「発病の時期」(結核の症状が初めて自覚された時期)から「初診の時期」(結核による症状を訴えて初めて医療機関を受診した時期)までの期間が2カ月以上である場合。

Patient delay: time interval from the onset of symptoms to the first visit to a medical institution of 2 months or longer

診断の遅れ:「初診の時期」から「診断の時期」(結核と診断された時期)までの期間が1カ月以上である場合。

Doctor delay: time interval from the first visit to a medical institution to the diagnosis of tuberculosis of 1 month or longer

発見の遅れ:「発病の時期」から「診断の時期」までの期間が3カ月以上である場合。

Total delay: time interval from the onset of symptoms to the diagnosis of tuberculosis is 3 months or longer

旧表 新登録結核患者の発見方法、年齢階層別、2015年
Previous table Proportion of mode of detection among newly notified TB patients by age group, 2015

年齢階層 Age groups	新登録患者 Newly notified TB patients	個別健診 Individual medical checkup	定期健診 Mass screening				接触者健診 Contact examination		医療機関 Medical institutions			その他 Others	不明 Unknown
			学校 Schools	住民 Residents	職場 Employees	施設 Facilities	家族 Family	その他 Others	有症状受診 Outpatients with TB symptoms(*1)	入院中 Inpatients with other diseases	通院中 Outpatients with other diseases		
全結核 All forms of TB													
総数 Total	18,280	1.7	1.1	2.0	6.3	0.4	1.4	1.4	57.7	14.4	11.2	0.8	0.7
0-14	51	2.0	2.0	0.0	0.0	0.0	49.0	5.9	33.3	2.0	2.0	3.9	0.0
15-19	163	3.7	23.9	0.0	1.8	0.0	9.2	5.5	49.1	2.5	1.8	0.6	0.0
20-24	524	3.1	19.3	0.4	16.6	0.4	2.7	5.7	44.7	2.1	0.8	0.2	0.8
25-29	603	2.2	6.3	0.0	26.5	0.5	2.2	5.1	50.6	2.3	1.5	0.8	0.8
30-34	517	1.5	1.4	0.2	24.2	0.2	1.0	4.8	57.6	1.7	4.1	0.6	0.8
35-39	584	1.7	0.3	0.5	23.8	0.3	2.2	3.6	58.0	2.7	3.6	0.7	1.4
40-44	693	2.6	0.3	1.3	20.8	0.1	2.5	2.2	60.2	2.2	5.5	0.7	1.2
45-49	670	3.4	0.1	1.5	18.2	0.4	1.8	3.3	55.8	4.3	7.6	1.0	0.6
50-54	646	3.7	0.0	1.9	18.0	0.6	2.5	2.5	54.5	5.3	7.3	1.9	0.5
55-59	705	1.8	0.1	0.9	11.9	0.3	2.1	2.6	60.4	7.0	9.2	1.6	0.7
60-64	958	3.0	0.0	2.6	9.1	0.2	1.8	1.8	54.9	8.0	14.8	1.8	0.7
65-69	1,401	2.6	0.0	3.7	3.9	0.3	1.4	1.2	55.4	13.8	14.2	1.1	1.1
70-74	1,636	1.8	0.0	3.6	1.2	0.4	1.5	0.6	57.3	13.9	17.2	0.8	0.9
75-79	2,121	2.0	0.0	2.9	0.2	0.5	0.4	0.3	57.1	18.8	16.0	0.3	0.8
80-84	2,756	0.7	0.0	2.8	0.0	0.4	0.6	0.3	60.0	19.7	14.3	0.5	0.3
85-89	2,561	0.5	0.0	1.3	0.1	0.3	0.5	0.1	60.6	22.6	12.3	0.6	0.6
90+	1,691	1.1	0.0	0.5	0.0	1.2	0.3	0.7	62.5	25.3	6.7	0.6	0.6
(再掲) 喀痰塗抹陽性肺結核 (Re-count) Sputum smear positive pulmonary TB													
総数 Total	7,131	1.1	0.5	1.5	3.7	0.3	0.6	0.4	65.1	14.6	9.9	0.7	0.5
0-14	2	0.0	0.0	0.0	0.0	0.0	0.0	0.0	100.0	0.0	0.0	0.0	0.0
15-19	41	2.4	22.0	0.0	0.0	0.0	2.4	0.0	61.0	4.9	2.4	2.4	0.0
20-24	130	3.8	12.3	0.0	8.5	0.0	1.5	0.0	72.3	0.0	0.8	0.0	0.0
25-29	162	0.6	3.7	0.0	19.8	0.6	0.0	0.0	69.8	1.9	1.2	0.6	0.6
30-34	149	0.0	2.0	0.7	17.4	0.0	0.0	1.3	67.8	1.3	4.0	2.0	0.7
35-39	199	2.0	0.0	0.0	17.1	0.0	0.5	0.5	72.4	2.0	3.5	0.5	0.5
40-44	216	2.8	0.0	0.9	11.1	0.0	0.9	0.9	74.5	1.9	5.6	0.5	0.5
45-49	238	2.5	0.0	2.1	12.6	0.4	1.3	1.3	68.9	3.4	4.6	0.4	0.4
50-54	252	3.6	0.0	0.8	13.5	0.0	1.2	2.4	65.1	4.4	5.2	1.6	0.4
55-59	283	0.7	0.4	1.1	6.7	0.4	0.7	1.8	69.6	6.4	8.5	2.1	1.1
60-64	383	3.1	0.0	1.6	7.3	0.5	0.5	0.8	63.7	7.0	13.1	0.5	0.8
65-69	552	1.1	0.0	1.4	4.0	0.2	1.1	0.4	65.9	12.7	10.0	0.5	1.1
70-74	616	0.8	0.0	2.8	1.0	0.3	0.8	0.5	62.8	13.3	14.4	1.3	0.8
75-79	792	1.1	0.0	1.8	0.1	0.4	0.4	0.1	61.7	18.6	14.8	0.3	0.4
80-84	1,157	0.1	0.0	2.7	0.0	0.3	0.3	0.0	63.6	19.4	12.3	0.4	0.4
85-89	1,190	0.3	0.0	1.3	0.0	0.2	0.4	0.0	63.9	21.9	10.8	0.6	0.3
90+	769	1.3	0.0	0.3	0.0	0.9	0.4		64.8	23.5	6.6	0.4	0.4

TB: tuberculosis

*1 有症状: 咳・痰・血痰・喀血等の「呼吸器症状」や、喘鳴、胸痛、背部痛、息切れ、発熱、寝汗、全身倦怠、体重減少等の「その他の症状」を有する場合。

TB symptoms: Respiratory symptoms such as cough, sputum expectoration, bloody sputum, and hemoptysis; and other symptoms such as wheezing, chest pain, back pain, dyspnea, fever, night sweating, fatigue tendency, and weight loss.

旧表改訂 新登録結核患者数、職業・性・年齢階層別、2015年
Previous table Number of newly notified TB patients by occupation, sex and age group, 2015

性/年齢	総数	接客業	看護師 /保健師	医師	他医療 従事者	教員/ 保育士	生徒/ 学生	他常用 勤労者	他臨時 /日雇	他自営/ 自由業	家事従 事者	保育園児/ 幼稚園児/ 他の乳幼児	無職/ 他	不明
Sex/Age group	Total	Service workers	Nurses/P ublic health nurses	Medical doctors	Other medical workers	Teachers/ Nursery nurses	Pupils/St udents	Other regular workers	Other temporar y/daily workers	Other self- employed	Housekee pers	Infants/ Little children	Jobless/ Others	Unknown
男 Male	11,124	215	16	47	91	32	294	1,810	438	623	9	16	7,180	353
0-14	29	-	-	-	-	-	13	-	-	-	-	16	-	-
15-19	84	1	-	-	1	-	58	9	5	1	1	-	8	-
20-24	292	13	-	-	3	-	139	83	26	1	-	-	24	3
25-29	322	17	3	5	18	2	67	145	23	2	1	-	26	13
30-39	605	48	7	8	22	6	16	339	28	31	-	-	77	23
40-49	840	37	4	6	20	7	1	431	64	80	-	-	155	35
50-59	913	39	1	9	18	8	-	385	73	84	-	-	269	27
60-69	1,723	42	1	7	4	4	-	325	148	144	1	-	963	84
70-79	2,467	16	-	5	4	2	-	78	62	167	1	-	2,033	99
80+	3,849	2	-	7	1	3	-	15	9	113	5	-	3,625	69
女 Female	7,156	226	203	14	173	40	205	585	209	117	314	14	4,877	179
0-14	22	-	-	-	-	-	8	-	-	-	-	14	-	-
15-19	79	-	-	-	-	-	66	4	4	-	-	-	4	1
20-24	232	18	10	-	6	1	89	59	17	2	3	-	21	6
25-29	281	36	19	4	21	6	31	85	18	5	10	-	36	10
30-39	496	50	56	4	40	6	10	133	51	8	51	-	72	15
40-49	523	41	57	3	41	12	1	147	37	17	46	-	108	13
50-59	438	35	46	3	35	7	0	94	34	16	36	-	114	18
60-69	636	26	14	-	25	6	0	54	29	26	67	-	359	30
70-79	1,290	16	1	-	5	1	0	7	16	22	68	-	1,117	37
80+	3,159	4	-	-	-	1	0	2	3	21	33	-	3,046	49

旧表 職業別、20～59歳新登録肺結核患者の発見方法別割合、2015年
Previous table Proportion of mode of detection among newly notified pulmonary TB patients aged 20-59 years by occupation, 2015

	肺結核 Pulmonary TB patients	個別健 診 Individual medical checkup	定期健診 Mass screening			接触者健診 Contact examination		医療機関 Clinics/Hospitals			その他/ 不明 Others/Un known
			住民 Residents	職場 Employe es	学校/施 設 Schools/F acilities	家族 Family	その他 Others	有症状 受診(*2) Outpatient s with TB symptoms	入院中 with other diseases	通院中 with other diseases	
総数 Total	4,066	2.9	1.0	23.1	4.2	2.6	4.2	50.6	3.1	4.8	3.5
接客業 Service workers	275	3.3	1.5	25.8	0.0	4.7	2.5	52.4	2.9	4.7	2.2
医療関係者 Medical workers(*1)	398	1.8	0.3	37.2	0.3	1.3	15.1	34.7	1.5	3.5	4.5
教員・保育士 Teachers/ Nursery nurses	49	10.2	0.0	26.5	2.0	4.1	4.1	42.9	6.1	4.1	0.0
学生 Students	313	2.9	0.0	1.6	48.2	1.6	6.1	30.4	0.3	0.6	8.3
他の常用勤労者 Other regular workers	1,574	2.4	0.6	37.7	0.1	2.4	2.7	46.8	2.2	3.9	1.2
他の臨時・日雇 Other temporary/ daily workers	304	3.0	0.7	17.4	0.3	3.3	4.3	62.2	2.3	3.0	3.6
他の自営自由業 Other self-employed	206	4.4	3.9	6.8	0.0	2.4	0.5	67.0	4.9	9.2	1.0
家事 Housekeepers	112	2.7	6.3	0.9	0.0	6.3	1.8	70.5	0.9	8.9	1.8
無職 Jobless/ Others	638	3.4	1.1	1.3	1.6	3.1	2.0	65.0	8.0	8.8	5.6
不明 Unknown	197	3.6	1.0	17.8	1.5	0.0	4.6	52.3	2.5	4.6	12.2

*1 医療関係者：看護師・保健師・助産師、医師、その他医療職含む。

Medical workers include nurses, public health nurses, medical doctors and dentists, physical therapists, occupational therapists, medical technologists, radiographers, and co-medicals.

*2 有症状：咳・痰・血痰・喀血等の「呼吸器症状」や、喘鳴、胸痛、背部痛、息切れ、発熱、寝汗、全身倦怠、体重減少等の「その他の症状」を有する場合。
TB symptoms: Respiratory symptoms such as cough, sputum expectoration, bloody sputum, and hemoptysis; and other symptoms such as wheezing, chest pain, back pain, dyspnea, fever, night sweating, fatigue tendency, and weight loss.

【診断時病状】

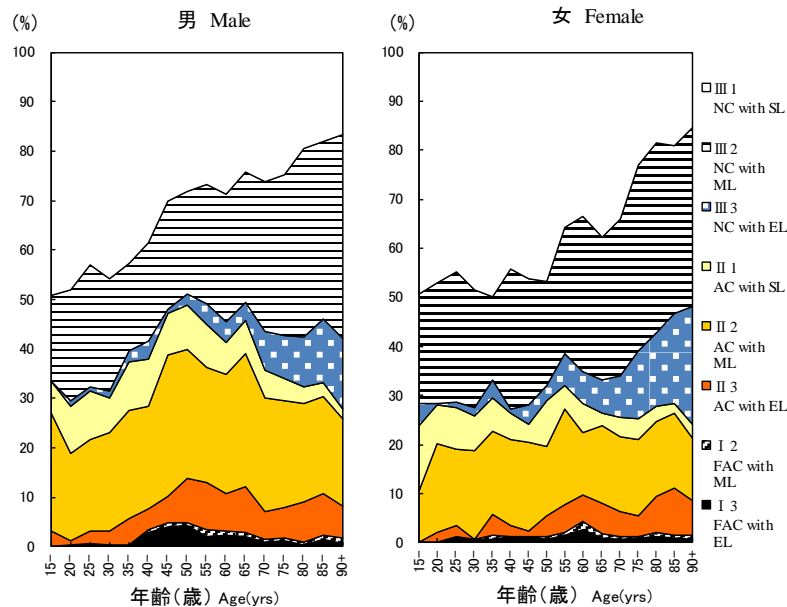


図3 新登録肺結核患者中胸部X線写真学会分類別所見割合、性・年齢5歳階級別、2015年
 Fig.3 Proportion of cases classified by X-ray classification by sex and 5-yearage group, 2015
 NC : Non-cavitary SL : Slight lesion AC : Advanced cavitary ML : Moderate lesion
 FAC: Far-advance cavitary EL : Extensive lesion

表2 新登録結核患者中「HIV合併あり」と報告された患者数、性・年齢階層別、2015年および2007～2015年
 Table 2 Number of newly notified tuberculosis patients with HIV infection, by sex and age group, 2015 and 2007-2015

年齢階層 Age group	喀痰塗抹陽性 Sputum smear positive		他結核菌陽性 Other bacteriologically-positive		菌陰性結核 Bacteriologically-negative		肺外結核 Extra-pulmonary		総数 Total	
	男 M	女 F	男 M	女 F	男 M	女 F	男 M	女 F	男 M	女 F
2015年 2015 Calendar year										
総計 Total	15 (3)	2 (1)	5 (2)	2 (2)	2	0	14 (2)	0	36 (7)	4 (3)
0-19	0	0	0	0	0	0	0	0	0	0
20-24	1 (1)	0	1 (1)	0	0	0	0	0	2 (2)	0
25-29	1 (1)	1 (1)	0	0	0	0	0	0	1 (1)	1 (1)
30-34	1	0	1	0	0	0	1	0	3	0
35-39	3 (1)	0	2	1 (1)	1	0	3 (1)	0	9 (2)	1 (1)
40-44	1	0	0	0	1	0	6 (1)	0	8 (1)	0
45-49	2	0	0	0	0	0	1	0	3	0
50-54	2	0	1 (1)	0	0	0	1	0	4 (1)	0
55-59	0	0	0	0	0	0	0	0	0	0
60-64	2	0	0	1 (1)	0	0	1	0	3	1 (1)
65-69	0	0	0	0	0	0	1	0	1	0
70-74	0	0	0	0	0	0	0	0	0	0
75-79	1	0	0	0	0	0	0	0	1	0
80+	1	1	0	0	0	0	0	0	1	1
2007～2015年 2007-2015 Calendar year										
総計 Total	149 (15)	25 (14)	80 (18)	11 (8)	38 (4)	7 (5)	167 (30)	24 (12)	434 (67)	67 (39)
0-19	1 (1)	0	0	0	0	0	2	0	3 (1)	0
20-24	5 (3)	0	3 (2)	0	1 (1)	1 (1)	1	1	10 (6)	2 (1)
25-29	9 (4)	4 (3)	1 (1)	1 (1)	1 (1)	0	9 (1)	1 (1)	20 (7)	6 (5)
30-34	12 (3)	4 (4)	10 (1)	3 (2)	2	1 (1)	21 (7)	4 (2)	45 (11)	12 (9)
35-39	22 (2)	3 (3)	17 (4)	3 (3)	6	2 (2)	27 (6)	4 (3)	72 (12)	12 (11)
40-44	26 (1)	4 (3)	15 (5)	0	7 (1)	3 (1)	41 (12)	5 (4)	89 (19)	12 (8)
45-49	15 (1)	1 (1)	9 (3)	1 (1)	4 (1)	0	30 (4)	2	58 (9)	4 (2)
50-54	12	0	11 (2)	0	5	0	8	0	36 (2)	0
55-59	8	0	3	0	4	0	9	2 (2)	24	2 (2)
60-64	13	1	5	1 (1)	3	0	7	0	28	2 (1)
65-69	10	0	3	0	3	0	6	1	22	1
70-74	2	2	1	0	1	0	2	1	6	3
75-79	5	0	0	0	1	0	3	2	9	2
80+	9	6	2	2	0	0	1	1	12	9

(): 外国人患者の再掲 Re-count of foreigners

HIV : Human Immunodeficiency Virus. M : male patients, F : female patients.

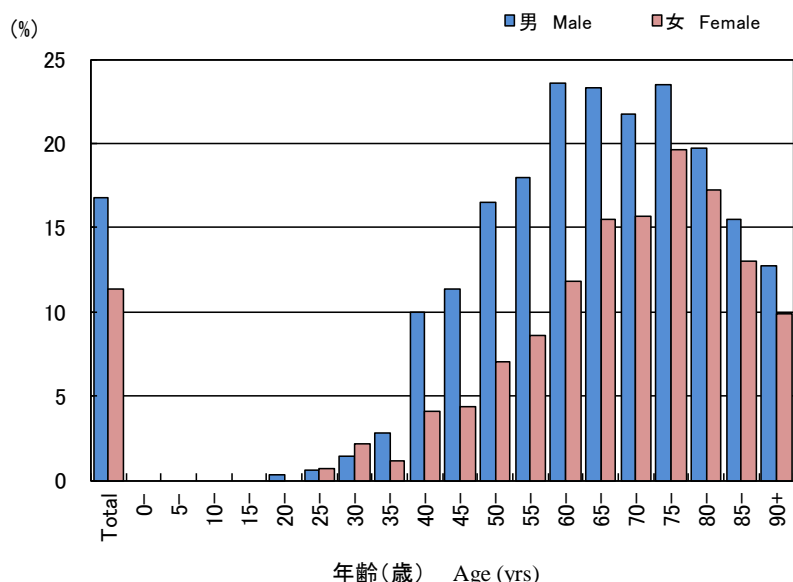


図4 新登録結核患者中「糖尿病合併あり」と報告された患者の割合、性・年齢階層別、2015年
Fig.4 Proportion of newly notified tuberculosis patients with diabetes mellitus in each age-group by sex, 2015

表3 新登録肺結核患者から分離培養された結核菌の抗結核薬剤感受性検査結果、治療歴別、2012~2015年
Table 3 Drug susceptibility test results among newly notified pulmonary tuberculosis patients, by treatment history, 2012-2015

治療歴、菌検査状況、耐性状況 Treatment history, Culture examination results, Drug susceptibility test results	2012				2013				2014				2015			
	n	%	%	%	n	%	%	%	n	%	%	%	n	%	%	%
総数 Total																
肺結核 Pulmonary tuberculosis	16,432	100%			15,972	100%			15,149	100%			14,123	100%		
培養結果把握 Culture result obtained	14,058	85.6			13,311	83.3			12,909	85.2			12,260	86.8		
培養陽性 Culture positive	11,261	68.5	100%		10,523	65.9	100%		10,259	67.7	100%		10,035	71.1	100%	
感受性結果把握 DST result obtained	8,347		74.1	100%	7,701		73.2	100%	7,645		74.5	100%	7,630		76.0	100%
多剤耐性 MDR	60			0.7	47			0.6	56			0.7	48			0.6
INH 耐性 Any INH resistance	380			4.6	369			4.8	349			4.6	372			4.9
RFP耐性 Any RFP resistance	73			0.9	64			0.8	76			1.0	77			1.0
1剤以上耐性 Any resistance*	810			9.7	757			9.8	749			9.8	767			10.1
初回治療 New treatment																
肺結核 Pulmonary tuberculosis	15,040	100%			14,727	100%			13,956	100%			13,102	100%		
培養結果把握 Culture result obtained	12,882	85.7			12,279	83.4			11,897	85.2			11,394	87.0		
培養陽性 Culture positive	10,379	69.0	100%		9,782	66.4	100%		9,523	68.2	100%		9,379	71.6	100%	
感受性結果把握 DST result obtained	7,676		74.0	100%	7,166		73.3	100%	7,104		74.6	100%	7,135		76.1	100%
多剤耐性 MDR	38			0.5	31			0.4	40			0.6	33			0.5
INH 耐性 Any INH resistance	310			4.0	326			4.5	288			4.1	317			4.4
RFP耐性 Any RFP resistance	46			0.6	42			0.6	58			0.8	58			0.8
1剤以上耐性 Any resistance*	712			9.3	680			9.5	664			9.3	686			9.6
再治療 Re-treatment																
肺結核 Pulmonary tuberculosis	1,094	100%			1,013	100%			968	100%			851	100%		
培養結果把握 Culture result obtained	959	87.7			852	84.1			848	87.6			732	86.0		
培養陽性 Culture positive	693	63.3	100%		586	57.8	100%		591	61.1	100%		534	62.7	100%	
感受性結果把握 DST result obtained	555		80.1	100%	435		74.2	100%	449		76.0	100%	412		77.2	100%
多剤耐性 MDR	22			4.0	16			3.7	15			3.3	14			3.4
INH 耐性 Any INH resistance	67			12.1	35			8.0	57			12.7	49			11.9
RFP耐性 Any RFP resistance	26			4.7	22			5.1	17			3.8	18			4.4
1剤以上耐性 Any resistance*	94			16.9	65			14.9	79			17.6	72			17.5
治療歴不明 No information about treatment history																
肺結核 Pulmonary tuberculosis	298	100%			232	100%			225	100%			170	100%		
培養結果把握 Culture result obtained	217	72.8			180	77.6			164	72.9			134	78.8		
培養陽性 Culture positive	189	63.4	100%		155	66.8	100%		145	64.4	100%		122	71.8	100%	
感受性結果把握 DST result obtained	116		61.4	100%	100		64.5	100%	92		63.4	100%	83		68.0	100%
多剤耐性 MDR	0			0.0	0			0.0	1			1.1	1			1.2
INH 耐性 Any INH resistance	3			2.6	8			8.0	4			4.3	6			7.2
RFP耐性 Any RFP resistance	1			0.9	0			0.0	1			1.1	1			1.2
1剤以上耐性 Any resistance*	4			3.4	12			12.0	6			6.5	9			10.8

DST: Drug susceptibility test MDR: Multi-drug resistant, i.e., resistant to at least INH and RFP INH: isoniazid RFP: rifampicin
感受性結果は重複あり Cases having drug resistance are counted independently by drug.

*: INH, RFP, SM EBの4剤のうちのいずれかに耐性 resistant to either INH, RFP, SM, or EB

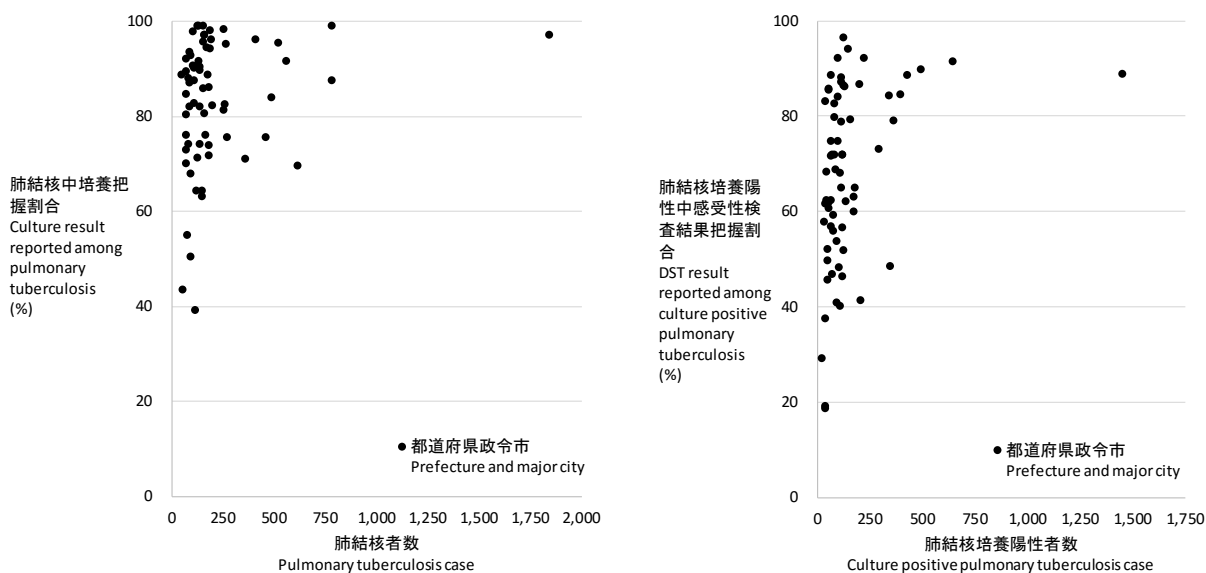
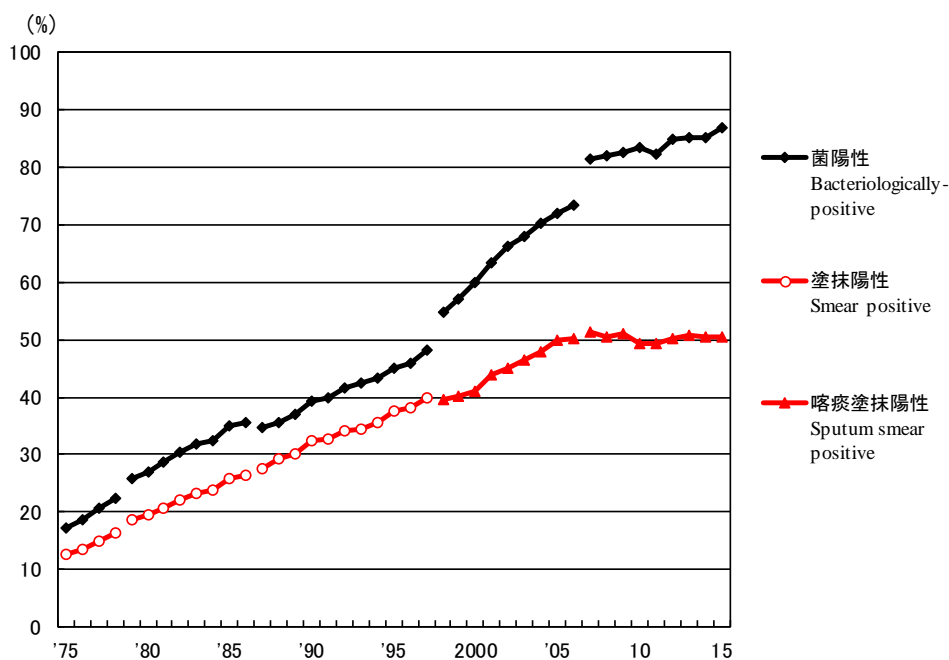


図5 新登録肺結核患者数とその内培養把握割合の散布図(左)、及び新登録肺結核培養陽性者数とその内感受性検査結果把握割合の散布図(右)、都道府県政令指定都市別、2015年

Fig. 5 Scatter plot of culture results reported among pulmonary tuberculosis patients and anti-tuberculosis drug susceptibility test results among newly notified pulmonary tuberculosis patients, by prefecture and major city, 2015



旧図 新登録肺結核患者中菌陽性割合の推移、1975~2015年

Previous Fig.

Proportion of bacteriologically confirmed cases among newly notified pulmonary tuberculosis patients, 1975-2015

資料と対象 Sources of information and subjects:

結核登録者の定期報告 Annual tuberculosis reports from public health centers

1975-1978: 全結核 All forms of tuberculosis

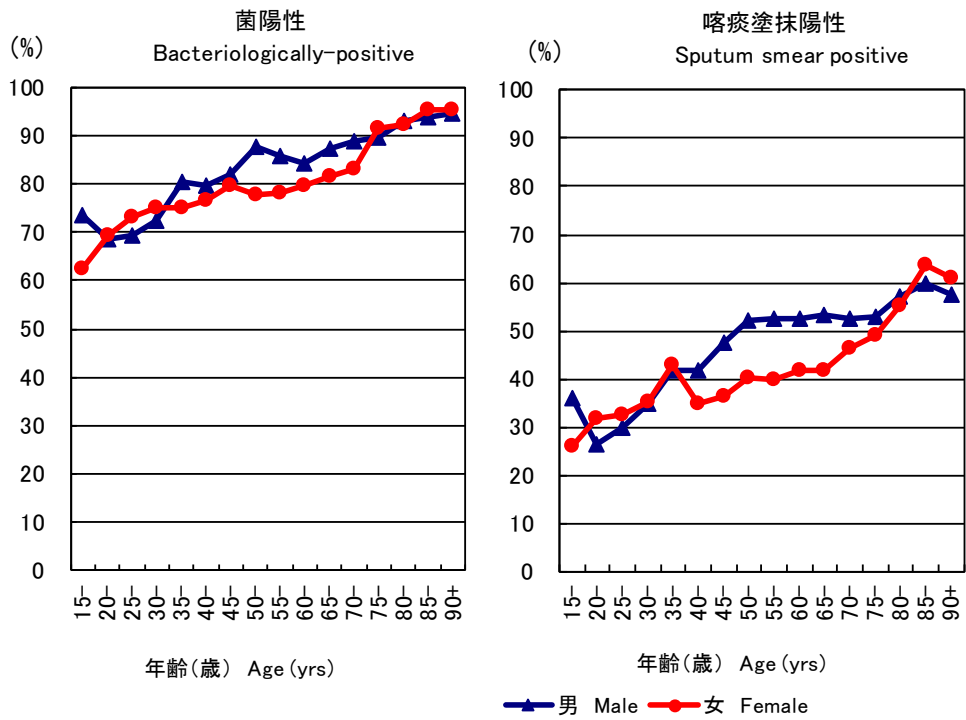
1979-1986: 肺結核 Pulmonary tuberculosis

電算化結核サーベイランスシステム Nationwide computerized tuberculosis surveillance system

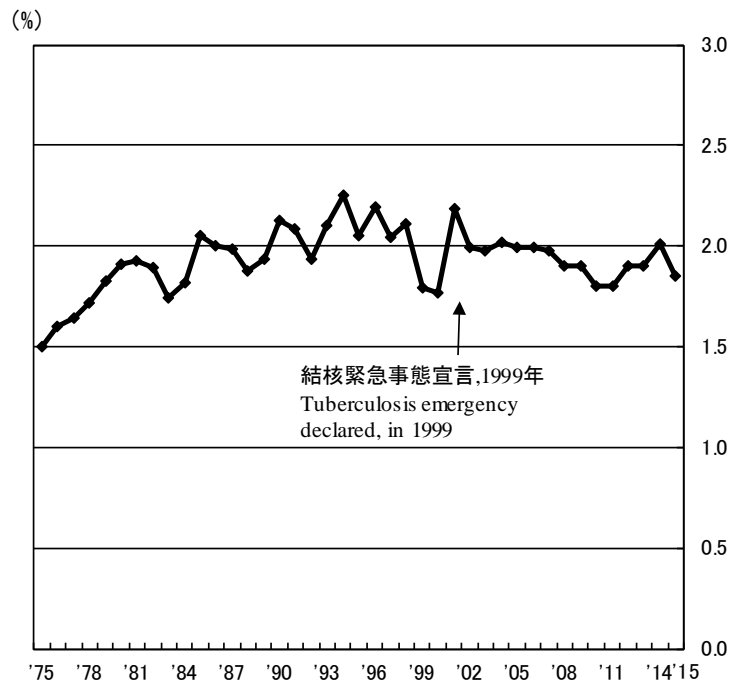
1987-1997: 肺結核 Pulmonary Tuberculosis

1998-2006: 肺結核(活動性分類の変更) Pulmonary tuberculosis (New patient criteria for notification were applied)

2007-2009: 肺結核(核酸増幅法項目の追加) Pulmonary tuberculosis (Item of nucleic acid amplification was added)



旧図 新登録肺結核患者中菌陽性割合、性・年齢5歳階級別、2015年
 Previous Fig. Proportion of bacteriologically confirmed cases among newly notified pulmonary tuberculosis patients by sex and 5-year age group, 2015



旧図 新登録肺結核患者中胸部X線写真での広汎空洞型割合の推移、1975~2015年
 Previous Fig. Proportion of far-advanced cavitory cases among newly notified pulmonary Tuberculosis patients, 1975-2015

旧表 性・職業別、30～59歳新登録肺結核患者中有空洞あるいは／かつ喀痰塗抹陽性の割合、2015年
 Previous table Proportion of cavity or/and sputum smear positive cases among newly notified pulmonary TB patients aged 30-59 years, 2015

	男 Male						女 Female							
	肺結核 Pulmonary TB	有空洞あるいは 喀痰塗抹陽性 Cavity or sputum smear(+)			有空洞かつ 喀痰塗抹陽性 Cavity and sputum smear(+)			肺結核 Pulmonary TB	有空洞あるいは 喀痰塗抹陽性 Cavity or sputum smear(+)			有空洞かつ 喀痰塗抹陽性 Cavity and sputum smear(+)		
		n	%	Ratio	n	%	Ratio		n	%	Ratio	n	%	Ratio
接客業 Service workers	105	60	57.1	1.2	35	33.3	2.3	93	49	52.7	1.4	19	20.4	2.3
医療職 Medical workers	81	39	48.1	1.0	12	14.8	1.0	234	90	38.5	1.0	21	9.0	1.0
教員・保育士 Teachers/ Nursery nurses	18	10	55.6	1.2	2	11.1	0.8	22	7	31.8	0.8	3	13.6	1.5
他の常用勤労者 Other regular workers	957	473	49.4	1.0	234	24.5	1.7	297	123	41.4	1.1	40	13.5	1.5
他の臨時・日雇 Other temporary/ daily workers	146	104	71.2	1.5	56	38.4	2.6	92	49	53.3	1.4	23	25.0	2.8
他の自営自由 Other self- employed	162	113	69.8	1.4	57	35.2	2.4	34	23	67.6	1.8	9	26.5	2.9
無職 Jobless	382	253	66.2	1.4	129	33.8	2.3	196	110	56.1	1.5	44	22.4	2.5
その他 Others	115	50	43.5	0.9	21	18.3	1.2	158	70	44.3	1.2	26	16.5	1.8
総数 Total	1,966	1,102	56.1		546	27.8		1,126	521	46.3		185	16.4	

その他：家事、学生、不明 Others:Houskeepers/ Students/ Unknown
 Ratio: 医療職の割合に対するその他職業の割合の比 The ratio of each proportion to that of medical workers

旧表 新登録肺結核患者の薬剤感受性検査結果、性・年齢別、2015年および2007～2015年
 Previous table Drug susceptibility test results among newly notified pulmonary tuberculosis patients, by sex and age group, 2015 and 2007-2015

年齢 Age group	総数 Total										初回治療(再掲) New treatment (Re-count)										
	男 Male					女 Female					男 Male					女 Female					
	感受性結果把握	多剤耐性	INH耐性	RFP耐性	1剤以上耐性*	感受性結果把握	多剤耐性	INH耐性	RFP耐性	1剤以上耐性*	感受性結果把握	多剤耐性	INH耐性	RFP耐性	1剤以上耐性*	感受性結果把握	多剤耐性	INH耐性	RFP耐性	1剤以上耐性*	
	DST result obtained	MDR	Any INH resistance	Any RFP resistance	Any resistance	DST result obtained	MDR	Any INH resistance	Any RFP resistance	Any resistance	DST result obtained	MDR	Any INH resistance	Any RFP resistance	Any resistance	DST result obtained	MDR	Any INH resistance	Any RFP resistance	Any resistance	
2015年 2015 Calendar year	総数 Total	4,890	28	254	47	513	2,740	20	118	30	254	4,533	20	218	37	458	2,602	13	99	21	228
0-19	44	0	3	0	5	31	0	3	0	6	42	0	3	0	5	30	0	3	0	6	
20-29	244	6	18	6	37	202	4	15	7	28	227	2	14	2	31	198	3	14	5	26	
30-39	259	1	17	3	37	179	4	17	4	31	245	1	16	3	35	173	4	17	4	31	
40-49	362	3	23	4	43	206	1	12	1	23	347	2	22	2	39	196	0	11	0	22	
50-59	447	2	18	7	57	152	4	13	4	21	422	1	17	5	53	141	2	11	2	18	
60-69	819	7	48	9	91	214	0	4	2	18	762	7	42	9	84	203	0	3	2	17	
70-79	1,027	3	54	8	120	485	3	18	5	51	957	2	47	7	107	456	1	14	2	45	
80+	1,688	6	73	10	123	1,271	4	36	7	76	1,531	5	57	9	104	1,205	3	26	6	63	
2007～2015年 2007-2015 Calendar year	総数 Total	41,690	322	2,114	457	4,975	21,484	171	955	230	2,214	37,662	200	1,708	294	4,301	20,111	103	776	148	1,943
0-19	287	6	24	6	53	266	2	21	3	53	273	4	22	4	51	254	2	19	3	49	
20-29	2,080	44	150	55	357	1,773	46	141	59	300	1,988	33	130	42	332	1,692	33	124	43	275	
30-39	2,605	17	167	28	395	1,950	24	125	35	281	2,462	13	156	24	371	1,868	19	111	26	256	
40-49	3,370	30	186	43	472	1,616	17	81	24	212	3,161	20	164	28	424	1,530	9	70	15	193	
50-59	4,862	46	271	74	712	1,359	18	63	25	156	4,492	27	232	46	636	1,285	7	47	13	136	
60-69	7,446	51	402	86	1,011	2,008	12	100	16	246	6,778	33	332	54	875	1,883	6	78	9	212	
70-79	9,204	74	466	96	1,091	3,982	24	164	31	404	8,159	39	343	54	903	3,651	10	130	15	349	
80+	11,836	54	448	69	884	8,530	28	260	37	562	10,349	31	329	42	709	7,948	17	197	24	473	
2007～2014年 2007-2014 Calendar year	総数 Total	100%	0.8	5.1	1.1	11.9	100%	0.8	4.4	1.1	10.3	100%	0.5	4.5	0.8	11.4	100%	0.5	3.9	0.7	9.7
0-19	100	2.1	8.4	2.1	18.5	100	0.8	7.9	1.1	19.9	100	1.5	8.1	1.5	18.7	100	0.8	7.5	1.2	19.3	
20-29	100	2.1	7.2	2.6	17.2	100	2.6	8.0	3.3	16.9	100	1.7	6.5	2.1	16.7	100	2.0	7.3	2.5	16.3	
30-39	100	0.7	6.4	1.1	15.2	100	1.2	6.4	1.8	14.4	100	0.5	6.3	1.0	15.1	100	1.0	5.9	1.4	13.7	
40-49	100	0.9	5.5	1.3	14.0	100	1.1	5.0	1.5	13.1	100	0.6	5.2	0.9	13.4	100	0.6	4.6	1.0	12.6	
50-59	100	0.9	5.6	1.5	14.6	100	1.3	4.6	1.8	11.5	100	0.6	5.2	1.0	14.2	100	0.5	3.7	1.0	10.6	
60-69	100	0.7	5.4	1.2	13.6	100	0.6	5.0	0.8	12.3	100	0.5	4.9	0.8	12.9	100	0.3	4.1	0.5	11.3	
70-79	100	0.8	5.1	1.0	11.9	100	0.6	4.1	0.8	10.1	100	0.5	4.2	0.7	11.1	100	0.3	3.6	0.4	9.6	
80+	100	0.5	3.8	0.6	7.5	100	0.3	3.0	0.4	6.6	100	0.3	3.2	0.4	6.9	100	0.2	2.5	0.3	6.0	

DST: Drug susceptibility test. MDR: Multi-drug resistance, i.e., resistant to at least INH and RFP. INH: Isoniazid. RFP: Rifampicin.

*: 2012年以降はINH, RFP, SM EBの4剤のうちのいずれかに耐性

旧表 新登録肺結核患者の薬剤感受性検査結果および耐性率、性・年齢別、2007～2015年（再掲：外国人）

Previous table Drug susceptibility test results among newly notified pulmonary tuberculosis patients, by sex and age group, 2007-2015 (Re-count of foreigners)

年齢 Age group	総数 Total										初回治療(再掲) New treatment (Re-count)									
	男 Male					女 Female					男 Male					女 Female				
	感受性結果 把握 DST result obtained	多剤耐性 MDR	INH耐性 Any INH resistance	RFP耐性 Any RFP resistance	1剤以上耐性 * Any resistance	感受性結果 把握 DST result obtained	多剤耐性 MDR	INH耐性 Any INH resistance	RFP耐性 Any RFP resistance	1剤以上耐性 * Any resistance	感受性結果 把握 DST result obtained	多剤耐性 MDR	INH耐性 Any INH resistance	RFP耐性 Any RFP resistance	1剤以上耐性 * Any resistance	感受性結果 把握 DST result obtained	多剤耐性 MDR	INH耐性 Any INH resistance	RFP耐性 Any RFP resistance	1剤以上耐性 * Any resistance
2007～2015年	2007-2015 Calendar year																			
総数 Total	1194	50	125	57	211	1330	65	169	81	270	1127	31	100	39	186	1256	48	146	60	238
0-19	61	5	14	5	21	44	1	5	2	6	58	3	12	3	19	43	1	4	2	5
20-29	584	35	70	40	111	584	39	89	48	141	559	25	55	30	99	560	29	77	36	126
30-39	211	4	16	5	31	339	15	46	17	66	202	3	15	4	29	317	12	42	13	60
40-49	112	4	12	5	23	196	4	16	6	33	101	0	7	0	16	181	1	13	2	28
50-59	73	0	2	0	5	73	3	7	4	11	69	0	2	0	5	68	3	5	4	8
60-69	64	2	7	2	13	35	1	3	2	5	58	2	6	2	12	34	1	3	2	5
70-79	48	0	2	0	3	23	2	3	2	4	44	0	2	0	3	18	1	2	1	2
80+	41	0	2	0	4	36	0	0	0	4	36	0	1	0	3	35	0	0	0	4
2007～2015年	2007-2015 Calendar year																			
総数 Total	100%	4.2	10.5	4.8	17.7	100%	4.9	12.7	6.1	20.3	100%	2.8	8.9	3.5	16.5	100%	3.8	11.6	4.8	18.9
0-19	100	8.2	23.0	8.2	34.4	100	2.3	11.4	4.5	13.6	100	5.2	20.7	5.2	32.8	100	2.3	9.3	4.7	11.6
20-29	100	6.0	12.0	6.8	19.0	100	6.7	15.2	8.2	24.1	100	4.5	9.8	5.4	17.7	100	5.2	13.8	6.4	22.5
30-39	100	1.9	7.6	2.4	14.7	100	4.4	13.6	5.0	19.5	100	1.5	7.4	2.0	14.4	100	3.8	13.2	4.1	18.9
40-49	100	3.6	10.7	4.5	20.5	100	2.0	8.2	3.1	16.8	100	0.0	6.9	0.0	15.8	100	0.6	7.2	1.1	15.5
50-59	100	0.0	2.7	0.0	6.8	100	4.1	9.6	5.5	15.1	100	0.0	2.9	0.0	7.2	100	4.4	7.4	5.9	11.8
60-69	100	3.1	10.9	3.1	20.3	100	2.9	8.6	5.7	14.3	100	3.4	10.3	3.4	20.7	100	2.9	8.8	5.9	14.7
70-79	100	0.0	4.2	0.0	6.3	100	8.7	13.0	8.7	17.4	100	0.0	4.5	0.0	6.8	100	5.6	11.1	5.6	11.1
80+	100	0.0	4.9	0.0	9.8	100	0.0	0.0	0.0	11.1	100	0.0	2.8	0.0	8.3	100	0.0	0.0	0.0	11.4

DST: Drug susceptibility test. MDR: Multi-drug resistance, i.e., resistant to at least INH and RFP. INH: Isoniazid. RFP: Rifampicin.

*: 2012年はINH, RFP, SM EBの4剤のうちのいずれかに耐性