

【治療 1】

Table 1 新登録結核患者の年齢階層別・治療歴別患者数、2015
Number of notified patients with tuberculosis according to treatment history and age group, 2015

Age group (years)	Newly notified patients with tuberculosis	Treatment history				Proportion of patients undergoing re-treatment for tuberculosis (%)
		New	Re-treatment		Unknown	
			All	Previous treatment of LTBI (re-count)		
Total	18,280	17,037	1,032	98	211	5.7
0-4	29	29	0	0	0	0.0
5-9	9	7	2	2	0	22.2
10-14	13	13	0	0	0	0.0
15-19	163	155	7	6	1	4.3
20-24	524	507	17	7	0	3.2
25-29	603	582	21	7	0	3.5
30-34	517	490	23	9	4	4.5
35-39	584	548	32	11	4	5.5
40-44	693	653	38	7	2	5.5
45-49	670	617	52	15	1	7.8
50-54	646	599	46	3	1	7.1
55-59	705	660	43	9	2	6.1
60-64	958	888	63	7	7	6.6
65-69	1,401	1,305	85	3	11	6.1
70-74	1,636	1,523	94	4	19	5.8
75-79	2,121	1,975	117	2	29	5.6
80-84	2,756	2,558	168	4	30	6.2
85-89	2,561	2,358	147	2	56	5.9
90+	1,691	1,570	77	0	44	4.7

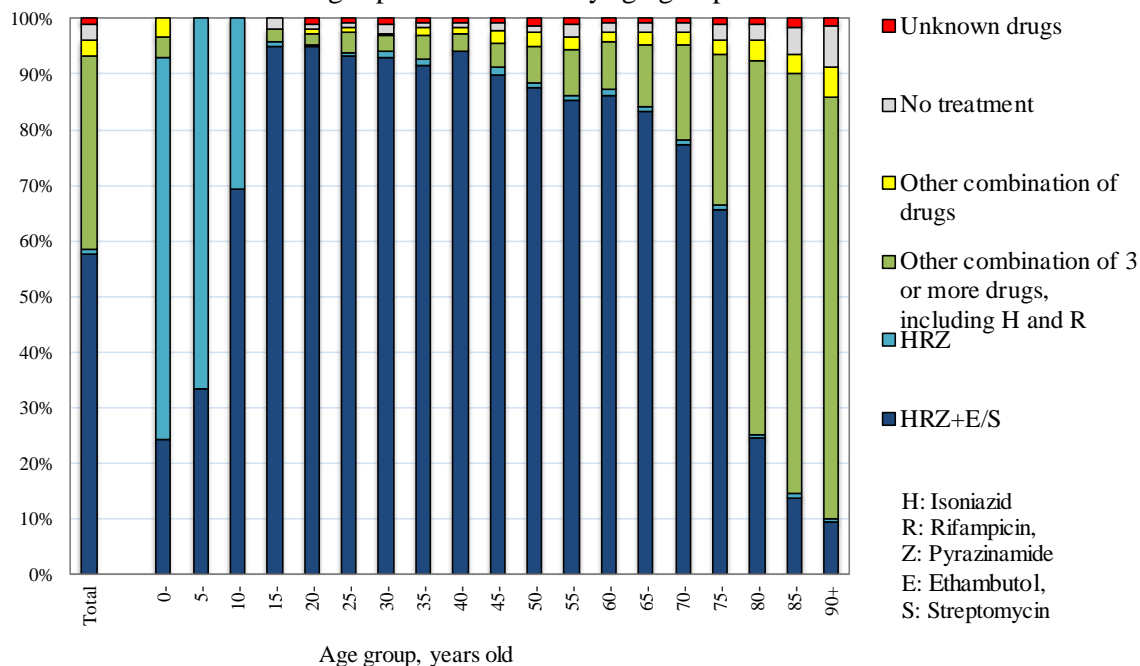
Proportion of patients undergoing re-treatment for tuberculosis: those with an unknown treatment history were excluded.

Table 2 再治療患者の年齢階層別・前回治療開始年別患者数、2015
Number of patients with TB on re-treatment, by year when previous TB treatment was initiated and age group, 2015

Year when previous TB treatment initiated	Total	Age group (years)								Previous TB treatment regimen unknown (re-count)
		0-19	20-29	30-39	40-49	50-59	60-69	70-79	80+	
Total	1,032	0	38	55	90	89	148	211	392	315
~1949	63	0	0	0	0	0	1	6	56	47
1950-59	154	0	0	0	0	0	8	32	114	92
1960-69	74	0	0	0	0	1	13	30	30	50
1970-79	30	0	0	0	1	3	9	8	9	17
1980-89	23	0	0	1	1	6	5	7	3	17
1990-99	66	0	1	3	18	8	10	9	17	30
2000-09	169	0	3	14	24	19	33	37	39	37
2010-15	453	9	34	37	46	52	69	82	124	25
2005-2015 (re-count)										
2005	9	0	1	1	1	0	1	1	4	3
2006	16	0	0	1	0	4	6	3	2	4
2007	17	0	0	1	4	1	2	4	5	2
2008	37	0	0	3	5	4	9	9	7	5
2009	25	0	0	3	3	3	4	5	7	3
2010	43	1	4	4	2	2	11	11	8	6
2011	37	0	2	2	2	8	7	9	7	4
2012	73	2	8	11	13	8	11	6	14	5
2013	119	1	6	7	7	12	20	22	44	5
2014	141	2	11	8	14	18	15	27	46	4
2015	40	3	3	5	8	4	5	7	5	1

TB: tuberculosis

Fig.1 新登録結核患者の年齢階層別治療開始時化学療法内容、2015
Anti-tuberculosis drugs upon notification by age group in 2015



旧表 再治療者の年齢階層別前回治療内容別患者数、2015年

Previous table Number of retreatment tuberculosis patients by previous tuberculosis treatment regimen and age group, 2015

年齢 Age group	再治療者 Retreatment	前回治療内容 Previous treatment regimen				
		HRZ含む治療 Regimen with HRZ	他HR含む治療 Other regimen with HR	その他治療 Other regimen	潜在性結核治療 LTBI treatment	不明 Unknown
総数 Total	1,032	311	182	126	98	315
0-4	0	0	0	0	0	0
5-9	2	0	0	0	2	0
10-14	0	0	0	0	0	0
15-19	7	1	0	0	6	0
20-24	17	8	1	0	7	1
25-29	21	10	1	0	7	3
30-34	23	9	3	0	9	2
35-39	32	16	4	1	11	0
40-44	38	17	6	0	7	8
45-49	52	18	8	0	15	11
50-54	46	22	8	1	3	12
55-59	43	19	2	4	9	9
60-64	63	27	9	4	7	16
65-69	85	37	12	7	3	26
70-74	94	29	11	15	4	35
75-79	117	43	19	16	2	37
80-84	168	28	29	39	4	68
85-89	147	22	39	29	2	55
90+	77	5	30	10	0	32

H : Isoniazid, R : Rifampicin, Z : Pyrazinamide

LTBI : Latent Tuberculosis Infection

旧表 治療開始時 P Z A 使用者について、治療完遂者のPZA使用継続状況、2014年新登録患者

Previous table Treatment with PZA in initial phase among newly notified tuberculosis patients in 2014 and completed standard treatment

		総計 Total	治療完遂者 Completed (%)
総計	Total	11,412	9,256
2ヵ月	2 months	8,453	7,945 (86.5)
1ヵ月以上2ヵ月未満 ≥ 1 month and < 2 months		857	666 (7.2)
1ヵ月未満	< 1 month	790	576 (6.3)
不明	Unknown	1,312	69 (-)

(%) : 不明を除く割合 Proportions: cases with unknown PZA use status excluded.

PZA: Pyrazinamide

【治療 2】

Fig.2 新登録肺結核患者の治療開始時受療状況別割合、年齢階層別、2015

Proportion of the outpatients and the hospitalized patients by age group in 2015 (N=14,123)

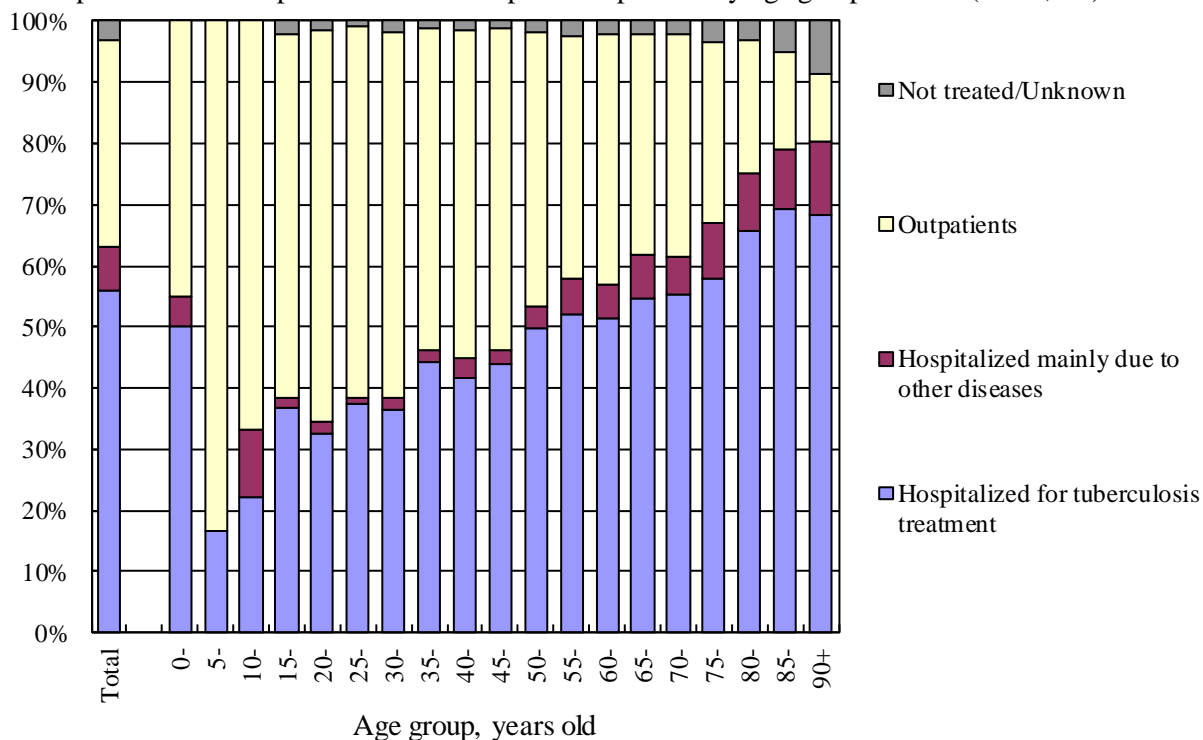


Table 3 治療開始時入院治療者の入院期間、総合患者分類別、2014年新登録患者
Duration of hospitalization among newly notified patients with tuberculosis in 2014

	Newly notified patients with tuberculosis						
	Total	Patients with pulmonary tuberculosis					Patients with extra-pulmonary tuberculosis
		Sub-total	Sputum-smear positive		Other bacteriologically positive	Bacteriologically negative and others	
			New	Re-treatment			
Total number of newly notified TB patients	19,547	15,130	7,198	491	5,284	2,157	4,417
Number of hospitalized TB patients	9,762	8,479	6,505	445	1,289	240	1,283
Median (days)*	60	62	65	65	42	26.5	45
[1st quartile, 3rd quartile] (days)*	[33, 99]	[35, 100]	[38, 104]	[43, 102]	[22, 79]	[15, 65]	[22, 91]

* Duration of hospitalization among those hospitalized with tuberculosis and with known date of discharge.

TB: tuberculosis

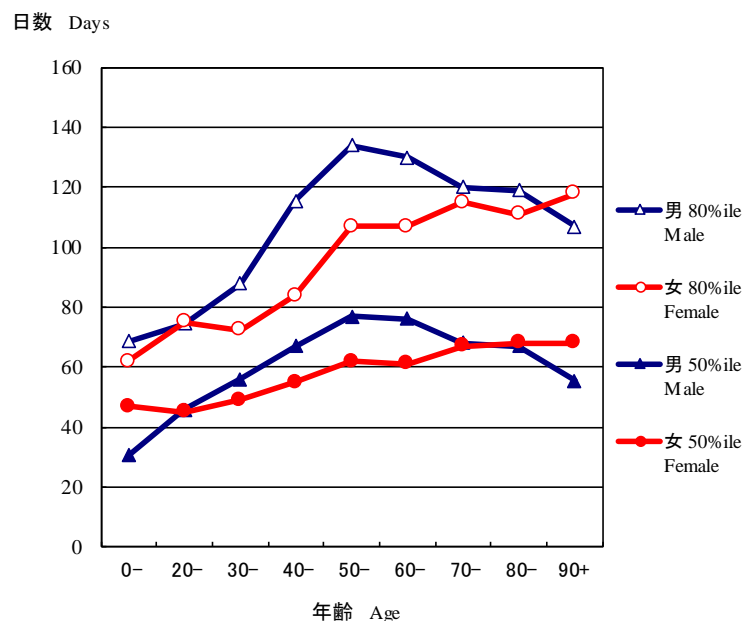
Table 4 前年(2013,2014)新登録治療開始者の各年末時治療終了状況および治療期間、総合患者分類別
Reasons for not continuing treatment 1 year after commencing treatment, and treatment duration among those newly notified in 2013 and 2014, by patient classification

	Newly notified patients with tuberculosis							Patients with LTBI (Not included in the total)
	Total	Patients with pulmonary tuberculosis					Patients with extra- pulmonary tuberculosis	
		Sub-total	Sputum-smear positive		Other bacteriologically positive	Bacteriologically negative and others		
		New	Re-treatment					
Newly notified cases in 2013*	20,435	15,941	7,600	529	5,478	2,334	4,494	7,129
Number of those who started treatment in 2013	19,886 (100%)	15,483 (100%)	7,420 (100%)	522 (100%)	5,256 (100%)	2,285 (100%)	4,403 (100%)	7,001 (100%)
Number of those no longer on treatment at the end of 2014 [§]	17,611 (88.6)	13,744 (88.8)	6,506 (87.7)	438 (83.9)	4,722 (89.8)	2,078 (90.9)	3,867 (87.8)	6,521 (93.1)
Treatment completed	14,160 (71.2)	11,066 (71.5)	4,908 (66.1)	322 (61.7)	4,006 (76.2)	1,830 (80.1)	3,094 (70.3)	5,727 (81.8)
Treatment stopped due to physician's instruction	423 (2.1)	255 (1.6)	81 (1.1)	13 (2.5)	87 (1.7)	74 (3.2)	168 (3.8)	622 (8.9)
Defaulted	82 (0.4)	56 (0.4)	18 (0.2)	2 (0.4)	19 (0.4)	17 (0.7)	26 (0.6)	110 (1.6)
Missing	14 (0.1)	13 (0.1)	2 (0.0)	0 (0.0)	5 (0.1)	6 (0.3)	1 (0.0)	5 (0.1)
Moved out of Japan	47 (0.2)	35 (0.2)	19 (0.3)	0 (0.0)	7 (0.1)	9 (0.4)	12 (0.3)	15 (0.2)
Dead	2,882 (14.5)	2,317 (15.0)	1,478 (19.9)	101 (19.3)	597 (11.4)	141 (6.2)	565 (12.8)	42 (0.6)
Unknown reasons	3 (0.0)	2 (0.0)	0 (0.0)	0 (0.0)	1 (0.0)	1 (0.0)	1 (0.0)	0 (0.0)
Median of duration of treatment among those completed treatment and still receiving treatment								
Subjects#	14,956	11,628	5,166	355	4,207	1,900	3,328	5,972
Median (days)	273	273	276	285	260	196	274	184
[1st quartile, 3rd quartile] (days)	[187, 324]	[187, 315]	[196, 344]	[270, 368]	[185, 299]	[183, 279]	[189, 353]	[181, 198]
Newly notified cases in 2014**	19,547	15,130	7,198	491	5,284	2,157	4,417	7,540
Number of those who started treatment in 2014	18,994 (100%)	14,669 (100%)	7,028 (100%)	480 (100%)	5,059 (100%)	2,102 (100%)	4,325 (100%)	7,429 (100%)
Number of those no longer on treatment at the end of 2015 [§]	16,977 (89.4)	13,153 (89.7)	6,199 (88.2)	428 (89.2)	4,593 (90.8)	1,933 (92.0)	3,824 (88.4)	6,981 (94.0)
Treatment completed	13,530 (71.2)	10,472 (71.4)	4,586 (65.3)	323 (67.3)	3,862 (76.3)	1,701 (80.9)	3,058 (70.7)	6,160 (82.9)
Treatment stopped due to physician's instruction	421 (2.2)	248 (1.7)	63 (0.9)	10 (2.1)	97 (1.9)	78 (3.7)	173 (4.0)	619 (8.3)
Defaulted	68 (0.4)	57 (0.4)	11 (0.2)	3 (0.6)	22 (0.4)	21 (1.0)	11 (0.3)	111 (1.5)
Missing	20 (0.1)	17 (0.1)	4 (0.1)	1 (0.2)	5 (0.1)	7 (0.3)	3 (0.1)	4 (0.1)
Moved out of Japan	46 (0.2)	41 (0.3)	22 (0.3)	0 (0.0)	14 (0.3)	5 (0.2)	5 (0.1)	10 (0.1)
Dead	2,890 (15.2)	2,317 (15.8)	1,513 (21.5)	91 (19.0)	592 (11.7)	121 (5.8)	573 (13.2)	74 (1.0)
Unknown reasons	2 (0.0)	1 (0.0)	0 (0.0)	0 (0.0)	1 (0.0)	0 (0.0)	1 (0.0)	3 (0.0)
Median of duration of treatment among those completed treatment and still receiving treatment								
Subjects#	14,199	10,931	4,803	347	4,018	1,763	3,268	6,368
Median (days)	273	273	276	285	266	194	274	184
[1st quartile, 3rd quartile] (days)	[187, 315]	[186, 309]	[193, 333]	[270, 366]	[185, 297]	[183, 280]	[189, 341]	[181, 200]

* Based on the annual report database in 2014. ** Based on the annual report database in 2015. [§] As registered by the public health center.

Subjects: Those who completed tuberculosis treatment or those who were still receiving treatment at the end of years (2014/2015).

LTBI: Latent tuberculosis infection



旧図 治療開始時結核を主たる理由に入院かつ退院時期情報があった者について、性・年齢階層別入院期間（中央値および80パーセントイル値）、2014年新登録肺結核喀痰塗抹陽性初回治療者

Previous Fig. Median (50 percentile) and 80 percentile of duration of hospitalization among those hospitalized with tuberculosis and with known discharged day, new sputum-smear positive pulmonary tuberculosis patients in 2014 by sex and age group

旧表 年齢階層別治療開始時入院あるいは他疾患入院の割合（％）、総合患者分類別、2015年新登録結核患者
 Previous table Proportion (%) hospitalized among newly notified tuberculosis patients in 2015 by age group and patient classification

年齢 Age	肺結核 Pulmonary TB									
	計 Total		喀痰塗抹陽性 Sputum smear positive		その他の結核菌陽性 Other bacillary positive		菌陰性・その他 Bacillary negative /unknown		肺外結核 Extra-pulmonary	
	入院 Ht	他入院 Ho	入院 Ht	他入院 Ho	入院 Ht	他入院 Ho	入院 Ht	他入院 Ho	入院 Ht	他入院 Ho
総数 Total	56.0	7.1	90.5	2.3	24.4	12.3	11.0	10.9	29.8	20.5
0-19	36.9	2.4	90.7	0.0	23.0	3.3	14.1	3.1	28.3	15.2
20-29	35.1	1.5	92.5	0.7	14.3	2.0	5.5	1.7	25.5	6.5
30-39	40.6	2.0	87.6	0.0	14.1	3.3	5.6	3.3	19.1	8.3
40-49	42.9	2.7	91.6	0.7	8.8	4.7	8.1	3.1	25.8	10.2
50-59	51.0	4.7	91.8	1.5	15.8	8.5	4.0	5.7	15.7	16.9
60-69	53.2	6.6	90.2	2.1	17.1	10.7	13.2	11.7	21.8	17.4
70-79	56.6	7.9	89.8	2.5	24.2	12.8	13.2	16.8	29.1	20.6
80-89	67.3	9.6	90.9	2.8	36.0	17.9	20.2	27.5	35.4	25.2
90+	68.2	12.1	89.9	3.8	38.5	23.4	24.2	28.8	42.5	30.2

入院：結核を主たる理由に入院 Ht: Hospitalized for tuberculosis treatment

他入院：結核以外の他疾患の治療を主たる理由に入院 Ho: Hospitalized mainly due to other diseases

旧表 治療開始時 I N HあるいはR F P使用者の使用継続状況、治療完遂の有無別、2014年新登録結核患者
 Previous table Outcome of treatment with INH or RFP in initial phase among those newly notified TB patients in 2014 by completion of standard regimen

	INHの使用 Treatment with INH		RFPの使用 Treatment with RFP	
	総数 Total	完遂 Completed	総数 Total	完遂 Completed
総数 Total	18,748	13,447 (100%)	18,532	13,395 (100%)
全期間中断なし Full course without interruption	11,695	10,544 (78.4)	11,718	10,671 (79.7)
一時中断あり Full course with interruption	1,476	1,120 (8.3)	1,526	1,194 (8.9)
中止後未使用 Interrupted and discontinued	833	408 (3.0)	630	145 (1.1)
不明* Unknown*	4,744	1,375 (10.2)	4,658	1,385 (10.3)

*: 治療継続中、治療中の除外等も含む Including those who were still receiving treatment with INH or RFP and those who were deleted from registration during their treatment.

INH : Isoniazid, RFP : Rifampicin

【治療成績】

Table 5.1 2014年新登録肺結核患者の総合患者分類別によるコホート治療成績
Treatment outcomes of newly notified patients with pulmonary tuberculosis (PTB) by patient classification,
2014 year cohort - all PTB patients

	Patients with pulmonary tuberculosis									
	Total	Sputum-smear positive					Other bacteriologically positive	Bacteriologically negative and others		
		New	Re-treatment							
New pulmonary tuberculosis patients	15,130 (100%)	7,198 (100%)	491 (100%)	5,284 (100%)	2,157 (100%)					
Treatment outcomes (*)										
1. Treatment Success	7,981	52.7	3,476	48.3	217	44.2	2,972	56.2	1,316	61.0
Cure	2,170	14.3	1,250	17.4	88	17.9	615	11.6	217	10.1
Treatment completed	5,811	38.4	2,226	30.9	129	26.3	2,357	44.6	1,099	51.0
Treatment Completed 1	3,905	25.8	1,658	23.0	96	19.6	1,127	21.3	1,024	47.5
Treatment Completed 2	1,906	12.6	568	7.9	33	6.7	1,230	23.3	75	3.5
2. Died	2,567	17.0	1,660	23.1	93	18.9	675	12.8	139	6.4
3. Treatment failed	59	0.4	36	0.5	8	1.6	15	0.3	0	0.0
4. Lost to follow-up	949	6.3	280	3.9	26	5.3	404	7.6	239	11.1
Lost to follow-up 1	303	2.0	107	1.5	9	1.8	113	2.1	74	3.4
Lost to follow-up 2	646	4.3	173	2.4	17	3.5	291	5.5	165	7.6
5. Transfer out	501	3.3	254	3.5	9	1.8	160	3.0	78	3.6
6. Still on treatment	1,122	7.4	620	8.6	60	12.2	344	6.5	98	4.5
Still on treatment 1	248	1.6	139	1.9	13	2.6	79	1.5	17	0.8
Still on treatment 2	175	1.2	88	1.2	9	1.8	59	1.1	19	0.9
Still on treatment 3	439	2.9	257	3.6	22	4.5	118	2.2	42	1.9
Still on treatment 4	260	1.7	136	1.9	16	3.3	88	1.7	20	0.9
7. Unclassified	1,951	12.9	872	12.1	78	15.9	714	13.5	287	13.3
Unclassified 1	442	2.9	159	2.2	10	2.0	224	4.2	49	2.3
Unclassified 2	0	0.0	0	0.0	0	0.0	0	0.0	0	0.0
Unclassified 3	540	3.6	297	4.1	35	7.1	140	2.6	68	3.2
Unclassified 4	76	0.5	33	0.5	5	1.0	29	0.5	9	0.4
Unclassified 5	893	5.9	383	5.3	28	5.7	321	6.1	161	7.5

*Treatment outcomes: See definitions in Table 6.

Table 5.2 2014年新登録肺結核患者の総合患者分類別によるコホート治療成績外国出生者全体
Treatment outcomes of newly notified patients with pulmonary tuberculosis (PTB) by patient classification,
2014 year cohort - foreign born patients with PTB

	Patients with pulmonary tuberculosis									
	Total	Sputum-smear positive					Other bacteriologically positive	Bacteriologically negative and others		
		New	Re-treatment							
New pulmonary tuberculosis patients	860 (100%)	297 (100%)	10 (100%)	302 (100%)	251 (100%)					
Treatment outcomes (*)										
1. Treatment Success	509	59.2	169	56.9	4	40.0	193	63.9	143	57.0
Cure	130	15.1	44	14.8	3	30.0	50	16.6	33	13.1
Treatment completed	379	44.1	125	42.1	1	10.0	143	47.4	110	43.8
Treatment Completed 1	249	29.0	84	28.3	1	10.0	59	19.5	105	41.8
Treatment Completed 2	130	15.1	41	13.8	0	0.0	84	27.8	5	2.0
2. Died	14	1.6	11	3.7	0	0.0	2	0.7	1	0.4
3. Treatment failed	3	0.3	2	0.7	1	10.0	0	0.0	0	0.0
4. Lost to follow-up	55	6.4	8	2.7	2	20.0	16	5.3	29	11.6
Lost to follow-up 1	22	2.6	5	1.7	1	10.0	6	2.0	10	4.0
Lost to follow-up 2	33	3.8	3	1.0	1	10.0	10	3.3	19	7.6
5. Transfer out	159	18.5	65	21.9	0	0.0	55	18.2	39	15.5
6. Still on treatment	34	4.0	12	4.0	2	20.0	13	4.3	7	2.8
Still on treatment 1	9	1.0	5	1.7	1	10.0	1	0.3	2	0.8
Still on treatment 2	2	0.2	0	0.0	0	0.0	2	0.7	0	0.0
Still on treatment 3	19	2.2	5	1.7	1	10.0	9	3.0	4	1.6
Still on treatment 4	4	0.5	2	0.7	0	0.0	1	0.3	1	0.4
7. Unclassified	86	10.0	30	10.1	1	10.0	23	7.6	32	12.7
Unclassified 1	18	2.1	9	3.0	1	10.0	4	1.3	4	1.6
Unclassified 2	0	0.0	0	0.0	0	0.0	0	0.0	0	0.0
Unclassified 3	16	1.9	5	1.7	0	0.0	3	1.0	8	3.2
Unclassified 4	1	0.1	0	0.0	0	0.0	1	0.3	0	0.0
Unclassified 5	51	5.9	16	5.4	0	0.0	15	5.0	20	8.0

*Treatment outcomes: See definitions in Table 6.

Table 5.1a Treatment outcome of newly notified pulmonary tuberculosis patients by patient classification, 2014 year cohort - 0~19 years old, all PTB patients

	Pulmonary tuberculosis patients									
	Total	Sputum-smear positive					Other bacteriologically positive	Bacteriologically negative and others		
		New	Retreatment							
New pulmonary tuberculosis patients	189	32	5	77	75					
Treatment outcomes (*)										
1. Treatment Success	145	76.7	23	71.9	4	80.0	61	79.2	57	76.0
Cure	21	11.1	5	15.6	2	40.0	9	11.7	5	6.7
Treatment completed	124	65.6	18	56.3	2	40.0	52	67.5	52	69.3
Treatment Completed 1	94	49.7	15	46.9	2	40.0	29	37.7	48	64.0
Treatment Completed 2	30	15.9	3	9.4	0	0.0	23	29.9	4	5.3
2. Died	0	0.0	0	0.0	0	0.0	0	0.0	0	0.0
3. Treatment failed	0	0.0	0	0.0	0	0.0	0	0.0	0	0.0
4. Lost to follow-up	13	6.9	3	9.4	0	0.0	4	5.2	6	8.0
Lost to follow-up 1	3	1.6	1	3.1	0	0.0	2	2.6	0	0.0
Lost to follow-up 2	10	5.3	2	6.3	0	0.0	2	2.6	6	8.0
5. Transfer out	15	7.9	2	6.3	0	0.0	7	9.1	6	8.0
6. Still on treatment	5	2.6	1	3.1	0	0.0	3	3.9	1	1.3
Still on treatment 1	1	0.5	0	0.0	0	0.0	1	1.3	0	0.0
Still on treatment 2	1	0.5	1	3.1	0	0.0	0	0.0	0	0.0
Still on treatment 3	2	1.1	0	0.0	0	0.0	1	1.3	1	1.3
Still on treatment 4	1	0.5	0	0.0	0	0.0	1	1.3	0	0.0
7. Unclassified	11	5.8	3	9.4	1	20.0	2	2.6	5	6.7
Unclassified 1	2	1.1	0	0.0	1	20.0	0	0.0	1	1.3
Unclassified 2	0	0.0	0	0.0	0	0.0	0	0.0	0	0.0
Unclassified 3	3	1.6	0	0.0	0	0.0	1	1.3	2	2.7
Unclassified 4	0	0.0	0	0.0	0	0.0	0	0.0	0	0.0
Unclassified 5	6	3.2	3	9.4	0	0.0	1	1.3	2	2.7

*Treatment outcomes: See definitions in Table 6.

PTB: pulmonary tuberculosis

Table 5.2a Treatment outcome of newly notified pulmonary tuberculosis patients by patient classification, 2014 year cohort - 0~19 years old, foreign born patients

	Pulmonary tuberculosis patients									
	Total	Sputum-smear positive					Other bacteriologically positive	Bacteriologically negative and others		
		New	Retreatment							
New pulmonary tuberculosis patients	58	14	0	21	23					
Treatment outcomes (*)										
1. Treatment Success	41	70.7	10	71.4	0 -	16	76.2	15	65.2	
Cure	9	15.5	2	14.3	0 -	5	23.8	2	8.7	
Treatment completed	32	55.2	8	57.1	0 -	11	52.4	13	56.5	
Treatment Completed 1	23	39.7	6	42.9	0 -	5	23.8	12	52.2	
Treatment Completed 2	9	15.5	2	14.3	0 -	6	28.6	1	4.3	
2. Died	0	0.0	0	0.0	0 -	0	0.0	0	0.0	
3. Treatment failed	0	0.0	0	0.0	0 -	0	0.0	0	0.0	
4. Lost to follow-up	3	5.2	2	14.3	0 -	0	0.0	1	4.3	
Lost to follow-up 1	1	1.7	1	7.1	0 -	0	0.0	0	0.0	
Lost to follow-up 2	2	3.4	1	7.1	0 -	0	0.0	1	4.3	
5. Transfer out	11	19.0	1	7.1	0 -	5	23.8	5	21.7	
6. Still on treatment	0	0.0	0	0.0	0 -	0	0.0	0	0.0	
Still on treatment 1	0	0.0	0	0.0	0 -	0	0.0	0	0.0	
Still on treatment 2	0	0.0	0	0.0	0 -	0	0.0	0	0.0	
Still on treatment 3	0	0.0	0	0.0	0 -	0	0.0	0	0.0	
Still on treatment 4	0	0.0	0	0.0	0 -	0	0.0	0	0.0	
7. Unclassified	3	5.2	1	7.1	0 -	0	0.0	2	8.7	
Unclassified 1	0	0.0	0	0.0	0 -	0	0.0	0	0.0	
Unclassified 2	0	0.0	0	0.0	0 -	0	0.0	0	0.0	
Unclassified 3	2	3.4	0	0.0	0 -	0	0.0	2	8.7	
Unclassified 4	0	0.0	0	0.0	0 -	0	0.0	0	0.0	
Unclassified 5	1	1.7	1	7.1	0 -	0	0.0	0	0.0	

*Treatment outcomes: See definitions in Table 6.

PTB: pulmonary tuberculosis

Table 5.1b Treatment outcome of newly notified pulmonary tuberculosis patients by patient classification, 2014 year cohort - 20~39 years old, all PTB patients

	Pulmonary tuberculosis patients									
	Total	Sputum-smear positive					Other bacteriologically positive	Bacteriologically negative and others		
		New	Retreatment							
New pulmonary tuberculosis patients	2,028	648	25	768	587					
Treatment outcomes (*)										
1. Treatment Success	1,427	70.4	455	70.2	15	60.0	554	72.1	403	68.7
Cure	354	17.5	162	25.0	7	28.0	113	14.7	72	12.3
Treatment completed	1,073	52.9	293	45.2	8	32.0	441	57.4	331	56.4
Treatment Completed 1	708	34.9	207	31.9	7	28.0	183	23.8	311	53.0
Treatment Completed 2	365	18.0	86	13.3	1	4.0	258	33.6	20	3.4
2. Died	9	0.4	6	0.9	2	8.0	0	0.0	1	0.2
3. Treatment failed	7	0.3	3	0.5	1	4.0	3	0.4	0	0.0
4. Lost to follow-up	139	6.9	28	4.3	1	4.0	53	6.9	57	9.7
Lost to follow-up 1	38	1.9	8	1.2	1	4.0	10	1.3	19	3.2
Lost to follow-up 2	101	5.0	20	3.1	0	0.0	43	5.6	38	6.5
5. Transfer out	213	10.5	84	13.0	0	0.0	75	9.8	54	9.2
6. Still on treatment	57	2.8	20	3.1	3	12.0	20	2.6	14	2.4
Still on treatment 1	14	0.7	7	1.1	1	4.0	4	0.5	2	0.3
Still on treatment 2	5	0.2	2	0.3	0	0.0	1	0.1	2	0.3
Still on treatment 3	28	1.4	9	1.4	1	4.0	10	1.3	8	1.4
Still on treatment 4	10	0.5	2	0.3	1	4.0	5	0.7	2	0.3
7. Unclassified	176	8.7	52	8.0	3	12.0	63	8.2	58	9.9
Unclassified 1	19	0.9	8	1.2	0	0.0	5	0.7	6	1.0
Unclassified 2	0	0.0	0	0.0	0	0.0	0	0.0	0	0.0
Unclassified 3	34	1.7	8	1.2	1	4.0	12	1.6	13	2.2
Unclassified 4	8	0.4	2	0.3	1	4.0	5	0.7	0	0.0
Unclassified 5	115	5.7	34	5.2	1	4.0	41	5.3	39	6.6

*Treatment outcomes: See definitions in Table 6.

PTB: pulmonary tuberculosis

Table 5.2b Treatment outcome of newly notified pulmonary tuberculosis patients by patient classification, 2014 year cohort - 20~39 years old, foreign born patients

	Pulmonary tuberculosis patients									
	Total	Sputum-smear positive					Other bacteriologically positive	Bacteriologically negative and others		
		New	Retreatment							
New pulmonary tuberculosis patients	606	192	4	217	193					
Treatment outcomes (*)										
1. Treatment Success	359	59.2	108	56.3	2	50.0	139	64.1	110	57.0
Cure	97	16.0	31	16.1	2	50.0	36	16.6	28	14.5
Treatment completed	262	43.2	77	40.1	0	0.0	103	47.5	82	42.5
Treatment Completed 1	173	28.5	50	26.0	0	0.0	45	20.7	78	40.4
Treatment Completed 2	89	14.7	27	14.1	0	0.0	58	26.7	4	2.1
2. Died	2	0.3	2	1.0	0	0.0	0	0.0	0	0.0
3. Treatment failed	2	0.3	1	0.5	1	25.0	0	0.0	0	0.0
4. Lost to follow-up	38	6.3	4	2.1	1	25.0	12	5.5	21	10.9
Lost to follow-up 1	15	2.5	2	1.0	1	25.0	4	1.8	8	4.1
Lost to follow-up 2	23	3.8	2	1.0	0	0.0	8	3.7	13	6.7
5. Transfer out	128	21.1	52	27.1	0	0.0	44	20.3	32	16.6
6. Still on treatment	19	3.1	7	3.6	0	0.0	6	2.8	6	3.1
Still on treatment 1	4	0.7	3	1.6	0	0.0	0	0.0	1	0.5
Still on treatment 2	0	0.0	0	0.0	0	0.0	0	0.0	0	0.0
Still on treatment 3	13	2.1	4	2.1	0	0.0	5	2.3	4	2.1
Still on treatment 4	2	0.3	0	0.0	0	0.0	1	0.5	1	0.5
7. Unclassified	58	9.6	18	9.4	0	0.0	16	7.4	24	12.4
Unclassified 1	14	2.3	6	3.1	0	0.0	4	1.8	4	2.1
Unclassified 2	0	0.0	0	0.0	0	0.0	0	0.0	0	0.0
Unclassified 3	11	1.8	3	1.6	0	0.0	3	1.4	5	2.6
Unclassified 4	1	0.2	0	0.0	0	0.0	1	0.5	0	0.0
Unclassified 5	32	5.3	9	4.7	0	0.0	8	3.7	15	7.8

*Treatment outcomes: See definitions in Table 6.

PTB: pulmonary tuberculosis

Table 5.1c Treatment outcome of newly notified pulmonary tuberculosis patients by patient classification, 2014 year cohort - 40-59 years old, all PTB patients

	Pulmonary tuberculosis patients									
	Total	Sputum-smear positive					Other bacteriologically positive	Bacteriologically negative and others		
		New	Retreatment							
New pulmonary tuberculosis patients	2,394	1,010	73				829		482	
Treatment outcomes (*)										
1. Treatment Success	1,661	69.4	680	67.3	38	52.1	608	73.3	335	69.5
Cure	472	19.7	278	27.5	12	16.4	127	15.3	55	11.4
Treatment completed	1,189	49.7	402	39.8	26	35.6	481	58.0	280	58.1
Treatment Completed 1	800	33.4	309	30.6	20	27.4	214	25.8	257	53.3
Treatment Completed 2	389	16.2	93	9.2	6	8.2	267	32.2	23	4.8
2. Died	54	2.3	38	3.8	2	2.7	12	1.4	2	0.4
3. Treatment failed	11	0.5	6	0.6	3	4.1	2	0.2	0	0.0
4. Lost to follow-up	156	6.5	36	3.6	3	4.1	67	8.1	50	10.4
Lost to follow-up 1	52	2.2	15	1.5	1	1.4	15	1.8	21	4.4
Lost to follow-up 2	104	4.3	21	2.1	2	2.7	52	6.3	29	6.0
5. Transfer out	85	3.6	52	5.1	5	6.8	20	2.4	8	1.7
6. Still on treatment	171	7.1	88	8.7	8	11.0	50	6.0	25	5.2
Still on treatment 1	41	1.7	19	1.9	4	5.5	14	1.7	4	0.8
Still on treatment 2	30	1.3	12	1.2	0	0.0	13	1.6	5	1.0
Still on treatment 3	67	2.8	38	3.8	2	2.7	15	1.8	12	2.5
Still on treatment 4	33	1.4	19	1.9	2	2.7	8	1.0	4	0.8
7. Unclassified	256	10.7	110	10.9	14	19.2	70	8.4	62	12.9
Unclassified 1	38	1.6	16	1.6	2	2.7	11	1.3	9	1.9
Unclassified 2	0	0.0	0	0.0	0	0.0	0	0.0	0	0.0
Unclassified 3	53	2.2	26	2.6	6	8.2	9	1.1	12	2.5
Unclassified 4	12	0.5	5	0.5	1	1.4	4	0.5	2	0.4
Unclassified 5	153	6.4	63	6.2	5	6.8	46	5.5	39	8.1

*Treatment outcomes: See definitions in Table 6.

PTB: pulmonary tuberculosis

Table 5.2c Treatment outcome of newly notified pulmonary tuberculosis patients by patient classification, 2014 year cohort - 40-59 years old, foreign born patients

	Pulmonary tuberculosis patients									
	Total	Sputum-smear positive					Other bacteriologically positive	Bacteriologically negative and others		
		New	Retreatment							
New pulmonary tuberculosis patients	144	59	5				50		30	
Treatment outcomes (*)										
1. Treatment Success	87	60.4	39	66.1	1	20.0	31	62.0	16	53.3
Cure	16	11.1	7	11.9	0	0.0	7	14.0	2	6.7
Treatment completed	71	49.3	32	54.2	1	20.0	24	48.0	14	46.7
Treatment Completed 1	44	30.6	22	37.3	1	20.0	7	14.0	14	46.7
Treatment Completed 2	27	18.8	10	16.9	0	0.0	17	34.0	0	0.0
2. Died	1	0.7	1	1.7	0	0.0	0	0.0	0	0.0
3. Treatment failed	0	0.0	0	0.0	0	0.0	0	0.0	0	0.0
4. Lost to follow-up	13	9.0	2	3.4	1	20.0	4	8.0	6	20.0
Lost to follow-up 1	6	4.2	2	3.4	0	0.0	2	4.0	2	6.7
Lost to follow-up 2	7	4.9	0	0.0	1	20.0	2	4.0	4	13.3
5. Transfer out	14	9.7	8	13.6	0	0.0	5	10.0	1	3.3
6. Still on treatment	9	6.3	2	3.4	2	40.0	4	8.0	1	3.3
Still on treatment 1	3	2.1	0	0.0	1	20.0	1	2.0	1	3.3
Still on treatment 2	1	0.7	0	0.0	0	0.0	1	2.0	0	0.0
Still on treatment 3	4	2.8	1	1.7	1	20.0	2	4.0	0	0.0
Still on treatment 4	1	0.7	1	1.7	0	0.0	0	0.0	0	0.0
7. Unclassified	20	13.9	7	11.9	1	20.0	6	12.0	6	20.0
Unclassified 1	3	2.1	2	3.4	1	20.0	0	0.0	0	0.0
Unclassified 2	0	0.0	0	0.0	0	0.0	0	0.0	0	0.0
Unclassified 3	1	0.7	0	0.0	0	0.0	0	0.0	1	3.3
Unclassified 4	0	0.0	0	0.0	0	0.0	0	0.0	0	0.0
Unclassified 5	16	11.1	5	8.5	0	0.0	6	12.0	5	16.7

*Treatment outcomes: See definitions in Table 6.

PTB: pulmonary tuberculosis

Table 5.1d Treatment outcome of newly notified pulmonary tuberculosis patients by patient classification, 2014 year cohort - 60~ years old, all PTB patients

	Pulmonary tuberculosis patients									
	Total	Sputum-smear positive					Other bacteriologically positive	Bacteriologically negative and others		
		New	Retreatment							
New pulmonary tuberculosis patients	10,519	5,508	388			3,610	1,013			
Treatment outcomes (*)										
1. Treatment Success	4,748	45.1	2,318	42.1	160	41.2	1,749	48.4	521	51.4
Cure	1,323	12.6	805	14.6	67	17.3	366	10.1	85	8.4
Treatment completed	3,425	32.6	1,513	27.5	93	24.0	1,383	38.3	436	43.0
Treatment Completed 1	2,303	21.9	1,127	20.5	67	17.3	701	19.4	408	40.3
Treatment Completed 2	1,122	10.7	386	7.0	26	6.7	682	18.9	28	2.8
2. Died	2,504	23.8	1,616	29.3	89	22.9	663	18.4	136	13.4
3. Treatment failed	41	0.4	27	0.5	4	1.0	10	0.3	0	0.0
4. Lost to follow-up	641	6.1	213	3.9	22	5.7	280	7.8	126	12.4
Lost to follow-up 1	210	2.0	83	1.5	7	1.8	86	2.4	34	3.4
Lost to follow-up 2	431	4.1	130	2.4	15	3.9	194	5.4	92	9.1
5. Transfer out	188	1.8	116	2.1	4	1.0	58	1.6	10	1.0
6. Still on treatment	889	8.5	511	9.3	49	12.6	271	7.5	58	5.7
Still on treatment 1	192	1.8	113	2.1	8	2.1	60	1.7	11	1.1
Still on treatment 2	139	1.3	73	1.3	9	2.3	45	1.2	12	1.2
Still on treatment 3	342	3.3	210	3.8	19	4.9	92	2.5	21	2.1
Still on treatment 4	216	2.1	115	2.1	13	3.4	74	2.0	14	1.4
7. Unclassified	1,508	14.3	707	12.8	60	15.5	579	16.0	162	16.0
Unclassified 1	383	3.6	135	2.5	7	1.8	208	5.8	33	3.3
Unclassified 2	0	0.0	0	0.0	0	0.0	0	0.0	0	0.0
Unclassified 3	450	4.3	263	4.8	28	7.2	118	3.3	41	4.0
Unclassified 4	56	0.5	26	0.5	3	0.8	20	0.6	7	0.7
Unclassified 5	619	5.9	283	5.1	22	5.7	233	6.5	81	8.0

*Treatment outcomes: See definitions in Table 6.

PTB: pulmonary tuberculosis

Table 5.2d Treatment outcome of newly notified pulmonary tuberculosis patients by patient classification, 2014 year cohort - 60~ years old, foreign born patients

	Pulmonary tuberculosis patients									
	Total	Sputum-smear positive					Other bacteriologically positive	Bacteriologically negative and others		
		New	Retreatment							
New pulmonary tuberculosis patients	52	32	1			14	5			
Treatment outcomes (*)										
1. Treatment Success	22	42.3	12	37.5	1	100.0	7	50.0	2	40.0
Cure	8	15.4	4	12.5	1	100.0	2	14.3	1	20.0
Treatment completed	14	26.9	8	25.0	0	0.0	5	35.7	1	20.0
Treatment Completed 1	9	17.3	6	18.8	0	0.0	2	14.3	1	20.0
Treatment Completed 2	5	9.6	2	6.3	0	0.0	3	21.4	0	0.0
2. Died	11	21.2	8	25.0	0	0.0	2	14.3	1	20.0
3. Treatment failed	1	1.9	1	3.1	0	0.0	0	0.0	0	0.0
4. Lost to follow-up	1	1.9	0	0.0	0	0.0	0	0.0	1	20.0
Lost to follow-up 1	0	0.0	0	0.0	0	0.0	0	0.0	0	0.0
Lost to follow-up 2	1	1.9	0	0.0	0	0.0	0	0.0	1	20.0
5. Transfer out	6	11.5	4	12.5	0	0.0	1	7.1	1	20.0
6. Still on treatment	6	11.5	3	9.4	0	0.0	3	21.4	0	0.0
Still on treatment 1	2	3.8	2	6.3	0	0.0	0	0.0	0	0.0
Still on treatment 2	1	1.9	0	0.0	0	0.0	1	7.1	0	0.0
Still on treatment 3	2	3.8	0	0.0	0	0.0	2	14.3	0	0.0
Still on treatment 4	1	1.9	1	3.1	0	0.0	0	0.0	0	0.0
7. Unclassified	5	9.6	4	12.5	0	0.0	1	7.1	0	0.0
Unclassified 1	1	1.9	1	3.1	0	0.0	0	0.0	0	0.0
Unclassified 2	0	0.0	0	0.0	0	0.0	0	0.0	0	0.0
Unclassified 3	2	3.8	2	6.3	0	0.0	0	0.0	0	0.0
Unclassified 4	0	0.0	0	0.0	0	0.0	0	0.0	0	0.0
Unclassified 5	2	3.8	1	3.1	0	0.0	1	7.1	0	0.0

*Treatment outcomes: See definitions in Table 6.

PTB: pulmonary tuberculosis

Table 5.1e Treatment outcome of newly notified pulmonary tuberculosis patients by patient classification, 2014 year cohort DM all PTB patients

	Pulmonary tuberculosis patients									
	Total	Sputum-smear positive					Other bacteriologically positive	Bacteriologically negative and others		
		New	Retreatment							
New pulmonary tuberculosis patients	2,185	1,252	84	656	193					
Treatment outcomes (*)										
1. Treatment Success	976	44.7	524	41.9	28	33.3	324	49.4	100	51.8
Cure	293	13.4	191	15.3	13	15.5	78	11.9	11	5.7
Treatment completed	683	31.3	333	26.6	15	17.9	246	37.5	89	46.1
Treatment Completed 1	485	22.2	257	20.5	13	15.5	129	19.7	86	44.6
Treatment Completed 2	198	9.1	76	6.1	2	2.4	117	17.8	3	1.6
2. Died	449	20.5	307	24.5	15	17.9	113	17.2	14	7.3
3. Treatment failed	13	0.6	10	0.8	2	2.4	1	0.2	0	0.0
4. Lost to follow-up	95	4.3	28	2.2	4	4.8	42	6.4	21	10.9
Lost to follow-up 1	42	1.9	12	1.0	2	2.4	22	3.4	6	3.1
Lost to follow-up 2	53	2.4	16	1.3	2	2.4	20	3.0	15	7.8
5. Transfer out	66	3.0	47	3.8	3	3.6	12	1.8	4	2.1
6. Still on treatment	281	12.9	176	14.1	14	16.7	71	10.8	20	10.4
Still on treatment 1	47	2.2	32	2.6	1	1.2	10	1.5	4	2.1
Still on treatment 2	44	2.0	30	2.4	3	3.6	8	1.2	3	1.6
Still on treatment 3	134	6.1	86	6.9	4	4.8	35	5.3	9	4.7
Still on treatment 4	56	2.6	28	2.2	6	7.1	18	2.7	4	2.1
7. Unclassified	305	14.0	160	12.8	18	21.4	93	14.2	34	17.6
Unclassified 1	35	1.6	18	1.4	3	3.6	10	1.5	4	2.1
Unclassified 2	0	0.0	0	0.0	0	0.0	0	0.0	0	0.0
Unclassified 3	82	3.8	52	4.2	8	9.5	16	2.4	6	3.1
Unclassified 4	12	0.5	5	0.4	1	1.2	5	0.8	1	0.5
Unclassified 5	176	8.1	85	6.8	6	7.1	62	9.5	23	11.9

*Treatment outcomes: See definitions in Table 6.

PTB: pulmonary tuberculosis

Table 5.2e Treatment outcome of newly notified pulmonary tuberculosis patients by patient classification, 2014 year cohort DM foreign born patients

	Pulmonary tuberculosis patients									
	Total	Sputum-smear positive					Other bacteriologically positive	Bacteriologically negative and others		
		New	Retreatment							
New pulmonary tuberculosis patients	49	32	3	8	6					
Treatment outcomes (*)										
1. Treatment Success	23	46.9	14	43.8	1	33.3	5	62.5	3	50.0
Cure	5	10.2	4	12.5	0	0.0	1	12.5	0	0.0
Treatment completed	18	36.7	10	31.3	1	33.3	4	50.0	3	50.0
Treatment Completed 1	13	26.5	7	21.9	1	33.3	2	25.0	3	50.0
Treatment Completed 2	5	10.2	3	9.4	0	0.0	2	25.0	0	0.0
2. Died	3	6.1	3	9.4	0	0.0	0	0.0	0	0.0
3. Treatment failed	1	2.0	1	3.1	0	0.0	0	0.0	0	0.0
4. Lost to follow-up	2	4.1	1	3.1	0	0.0	0	0.0	1	16.7
Lost to follow-up 1	1	2.0	1	3.1	0	0.0	0	0.0	0	0.0
Lost to follow-up 2	1	2.0	0	0.0	0	0.0	0	0.0	1	16.7
5. Transfer out	8	16.3	7	21.9	0	0.0	1	12.5	0	0.0
6. Still on treatment	6	12.2	3	9.4	1	33.3	1	12.5	1	16.7
Still on treatment 1	2	4.1	2	6.3	0	0.0	0	0.0	0	0.0
Still on treatment 2	0	0.0	0	0.0	0	0.0	0	0.0	0	0.0
Still on treatment 3	4	8.2	1	3.1	1	33.3	1	12.5	1	16.7
Still on treatment 4	0	0.0	0	0.0	0	0.0	0	0.0	0	0.0
7. Unclassified	6	12.2	3	9.4	1	33.3	1	12.5	1	16.7
Unclassified 1	3	6.1	1	3.1	1	33.3	0	0.0	1	16.7
Unclassified 2	0	0.0	0	0.0	0	0.0	0	0.0	0	0.0
Unclassified 3	0	0.0	0	0.0	0	0.0	0	0.0	0	0.0
Unclassified 4	0	0.0	0	0.0	0	0.0	0	0.0	0	0.0
Unclassified 5	3	6.1	2	6.3	0	0.0	1	12.5	0	0.0

*Treatment outcomes: See definitions in Table 6.

PTB: pulmonary tuberculosis

Table 6 治療成績区分と定義および新登録喀痰塗抹陽性初回治療肺結核患者の治療成績(率)
Treatment outcomes of newly notified patients with sputum-smear positive pulmonary tuberculosis, 2007-2014 year cohorts, %

Treatment outcomes	Definition	2007	2008	2009	2010	2011	2012	2013	2014
		n=	9,421	8,999	8,772	8,242	7,736	7,694	7,600
1. Cure	A patient who completed treatment within 12 months and whose sputum culture tests were negative at least two times (one of the negative culture results was within three months before the completion of treatment).	16.9	17.6	20.7	20.1	20.0	18.4	18.6	17.4
2. Treatment completed 1	A patient who completed treatment within 12 months but had only one negative sputum culture result.	24.9	26.8	27.2	27.4	20.7	20.9	22.9	23.0
3. Treatment completed 2	A patient who completed treatment within 12 months but did not have a negative sputum culture result.	3.8	3.4	3.9	4.5	9.9	10.1	8.0	7.9
4. Died	A patient who died for any reason during the course of treatment.	18.4	19.1	19.3	20.8	21.6	22.6	21.6	23.1
5. Treatment failed	A patient whose sputum culture was positive at 5 months or later during the course of treatment.	1.0	1.1	0.9	0.7	0.7	0.7	0.6	0.5
6. Lost to follow-up 1	A patient whose treatment was interrupted for 60 days (or two consecutive months) or more.	0.7	0.6	0.8	0.6	1.1	1.4	1.7	1.5
7. Lost to follow-up 2	A patient whose treatment was stopped by physician's instruction before completing standard treatment.	4.3	3.2	2.9	2.3	2.2	2.3	2.7	2.4
8. Transfer out	A patient who has been transferred out of the region where the patient was initially registered.	3.2	2.8	3.3	3.0	3.2	3.0	3.2	3.5
9. Still on treatment 1	A patient who stopped INH and/or RFP and was still on treatment after 12 months.	1.7	1.4	2.0	1.6	1.8	1.9	2.2	1.9
10. Still on treatment 2*	A patient who has been on treatment with INH and/or RFP and was still on treatment after 12 months due possibly to treatment interruption.	10.3	10.5	8.8	8.3	1.3	1.4	1.6	1.2
11. Still on treatment 3	A patient who has been on treatment with INH and/or RFP and was still on treatment after 12 months without treatment interruption.					4.1	4.0	5.0	3.6
12. Still on treatment 4	A patient who has been on treatment with INH and/or RFP and was still on treatment after 12 months due to unknown reasons.					3.9	3.2	2.3	1.9
13. Unclassified 1	A patient who did not start tuberculosis treatment (due mostly to early death).	1.9	2.2	2.1	2.1	0.7	2.4	2.2	2.2
14. Unclassified 2	A patient whose initial treatment regimen was unknown.	4.3	3.9	1.4	1.2	1.0	0.6	0.8	0.0
15. Unclassified 3	A patient whose treatment regimen was other than the standard.	2.5	2.7	2.5	2.7	4.1	3.6	3.4	4.1
16. Unclassified 4	A patient who stopped INH and/or RFP but completed treatment within 12 months.	1.1	1.1	1.3	1.1	0.4	0.4	0.4	0.5
17. Unclassified 5	A patient whose information was insufficient for classifying treatment outcome.	5.1	3.8	2.9	3.5	3.1	3.1	2.8	5.3

*There were two categories of "Still on treatment" until 2010 cohorts. Since 2011, the categories have been divided into four kinds as indicated.
INH: isoniazid, RFP: rifampicin

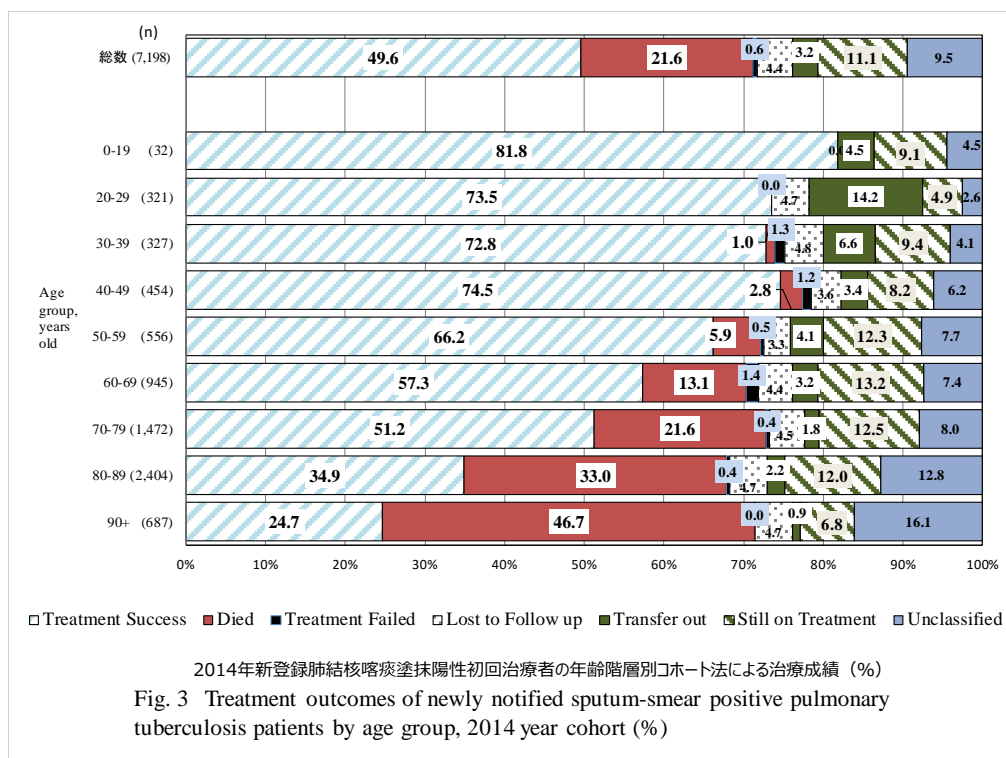


Table 7 新登録結核患者と潜在性結核感染症登録患者の次年末時登録除外状況および除外理由、総合患者分類別(2013、2014年新登録患者)
 Patients deleted from tuberculosis registration by the end of years (in 2014 and in 2015)
 - Patients with tuberculosis patients and LTBI notified in the previous years (in 2013 and in 2014, respectively) -

	Newly notified patients with tuberculosis									Patients with LTBI (Not included in the total) (%)
	Total (%)	Patients with pulmonary tuberculosis							Patients with extra-pulmonary tuberculosis (%)	
		Sub-total (pulmonary tuberculosis) (%)	Sputum-smear positive		Other bacteriologically positive (%)	Bacteriologically negative and others (%)				
			New (%)	Re-treatment (%)						
Newly notified tuberculosis cases in 2013*	20,435 (100)	15,941 (100)	7,600 (100)	529 (100)	5,478 (100)	2,334 (100)	4,494 (100)	7,129 (100)		
Total number of patients deleted from tuberculosis registration by the end of 2013	6,064 (29.7)	4,858 (30.5)	2,728 (35.9)	190 (35.9)	1,472 (26.9)	468 (20.1)	1,206 (26.8)	725 (10.2)		
No need for post-treatment follow-up	41 (0.2)	14 (0.1)	4 (0.1)	0 (0.0)	2 (0.0)	8 (0.3)	27 (0.6)	112 (1.6)		
Died	4,868 (23.8)	3,864 (24.2)	2,287 (30.1)	147 (27.8)	1,151 (21.0)	279 (12.0)	1,004 (22.3)	116 (1.6)		
Tuberculosis-related death	1,433 (7.0)	1,211 (7.6)	921 (12.1)	55 (10.4)	184 (3.4)	51 (2.2)	222 (4.9)	0 (0.0)		
Other causes of death	3,435 (16.8)	2,653 (16.6)	1,366 (18.0)	92 (17.4)	967 (17.7)	228 (9.8)	782 (17.4)	116 (1.6)		
Transfer out	1,003 (4.9)	848 (5.3)	374 (4.9)	36 (6.8)	274 (5.0)	164 (7.0)	155 (3.4)	389 (5.5)		
Register during follow-up	127 (0.6)	111 (0.7)	57 (0.8)	6 (1.1)	36 (0.7)	12 (0.5)	16 (0.4)	72 (1.0)		
Other reasons	25 (0.1)	21 (0.1)	6 (0.1)	1 (0.2)	9 (0.2)	5 (0.2)	4 (0.1)	36 (0.5)		
Newly notified tuberculosis cases in 2014**	19,547 (100)	15,130 (100)	7,198 (100)	491 (100)	5,284 (100)	2,157 (100)	4,417 (100)	7,540 (100)		
Total number of patients deleted from tuberculosis registration by the end of 2014	5,883 (30.1)	4,681 (30.9)	2,678 (37.2)	159 (32.4)	1,436 (27.2)	408 (18.9)	1,202 (27.2)	768 (10.2)		
No need for post-treatment follow-up	29 (0.1)	22 (0.1)	4 (0.1)	2 (0.4)	6 (0.1)	10 (0.5)	7 (0.2)	121 (1.6)		
Died	4,762 (24.4)	3,752 (24.8)	2,264 (31.5)	135 (27.5)	1,116 (21.1)	237 (11.0)	1,010 (22.9)	159 (2.1)		
Tuberculosis-related death	1,501 (7.7)	1,269 (8.4)	971 (13.5)	41 (8.4)	214 (4.0)	43 (2.0)	232 (5.3)	1 (0.0)		
Other causes of death	3,261 (16.7)	2,483 (16.4)	1,293 (18.0)	94 (19.1)	902 (17.1)	194 (9.0)	778 (17.6)	158 (2.1)		
Transfer out	952 (4.9)	792 (5.2)	362 (5.0)	14 (2.9)	270 (5.1)	146 (6.8)	160 (3.6)	412 (5.5)		
Register during follow-up	116 (0.6)	99 (0.7)	45 (0.6)	7 (1.4)	39 (0.7)	8 (0.4)	17 (0.4)	42 (0.6)		
Other reasons	24 (0.1)	16 (0.1)	3 (0.0)	1 (0.2)	5 (0.1)	7 (0.3)	8 (0.2)	34 (0.5)		

* Based on the annual report database in 2014. ** Based on the annual report database in 2015.
 LTBI : Latent Tuberculosis Infection

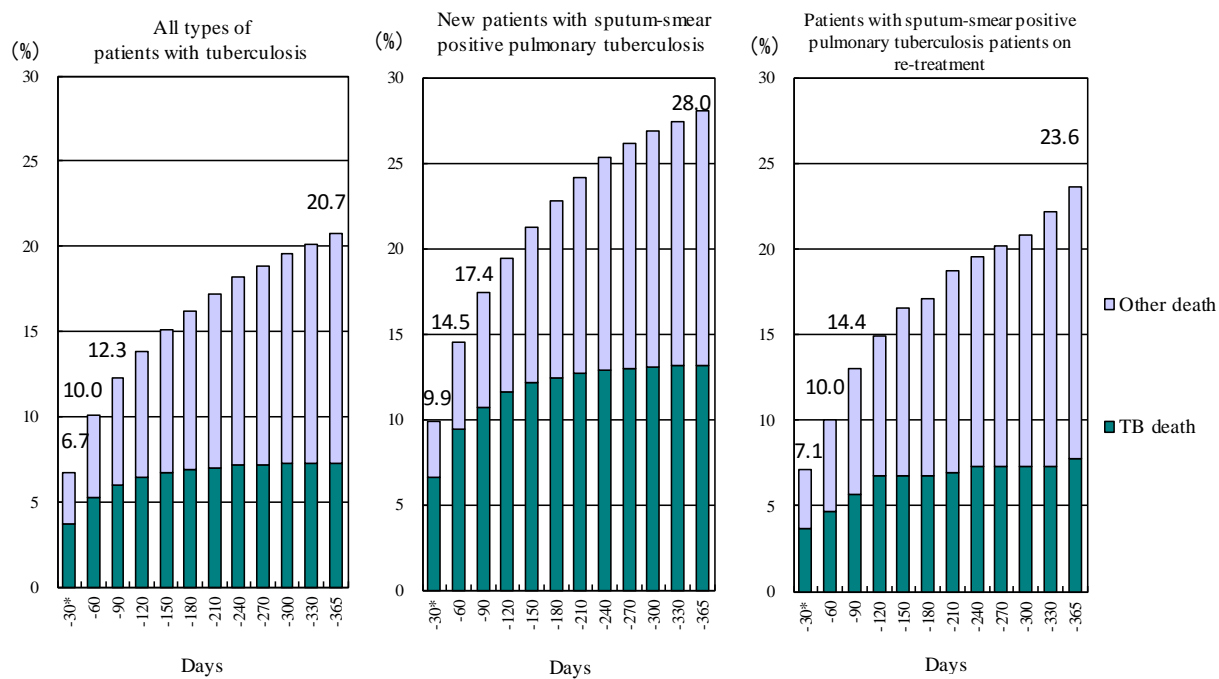


Fig. 4 2014年新登録結核患者中治療開始後1年以内死亡者の時期別・死因別累積死亡割合 (%)
 Cumulative proportion of deaths by duration of treatment - Newly notified patients with tuberculosis in 2014

* Includes patients who died before the commencement of treatment.
 TB: tuberculosis