

【概況】

人口10万対率  
Rate per 100,000

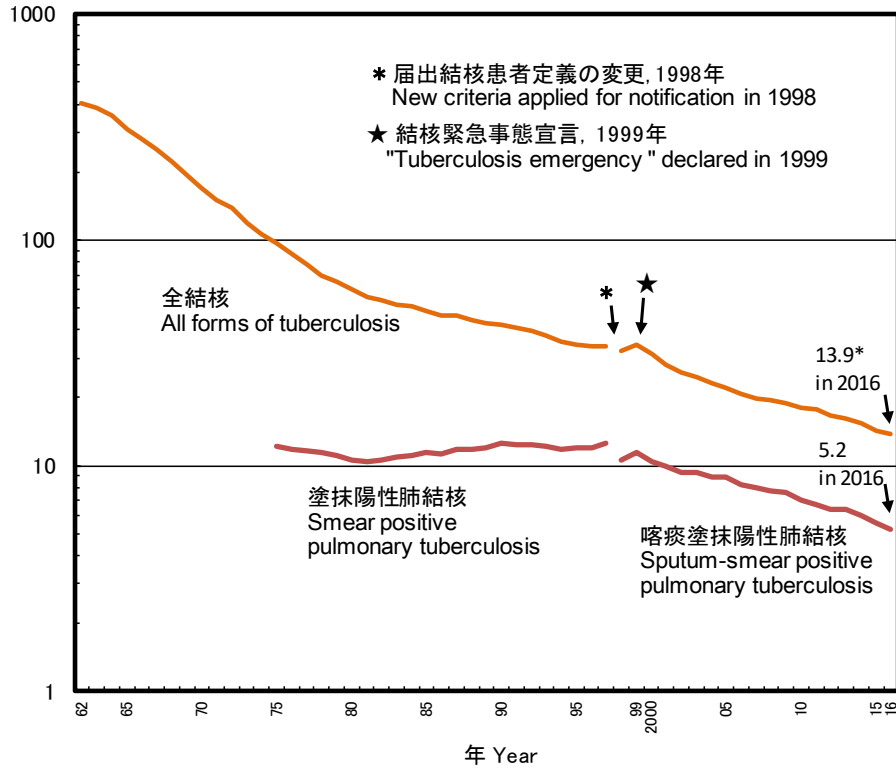


図 1 人口10万対年間新結核患者登録数(登録率)の年次推移, 1962~2016年  
Fig. 1 Annual trend of tuberculosis notification rate (all forms, sputum-smear positive pulmonary tuberculosis) per 100,000 population in Japan, 1962-2016

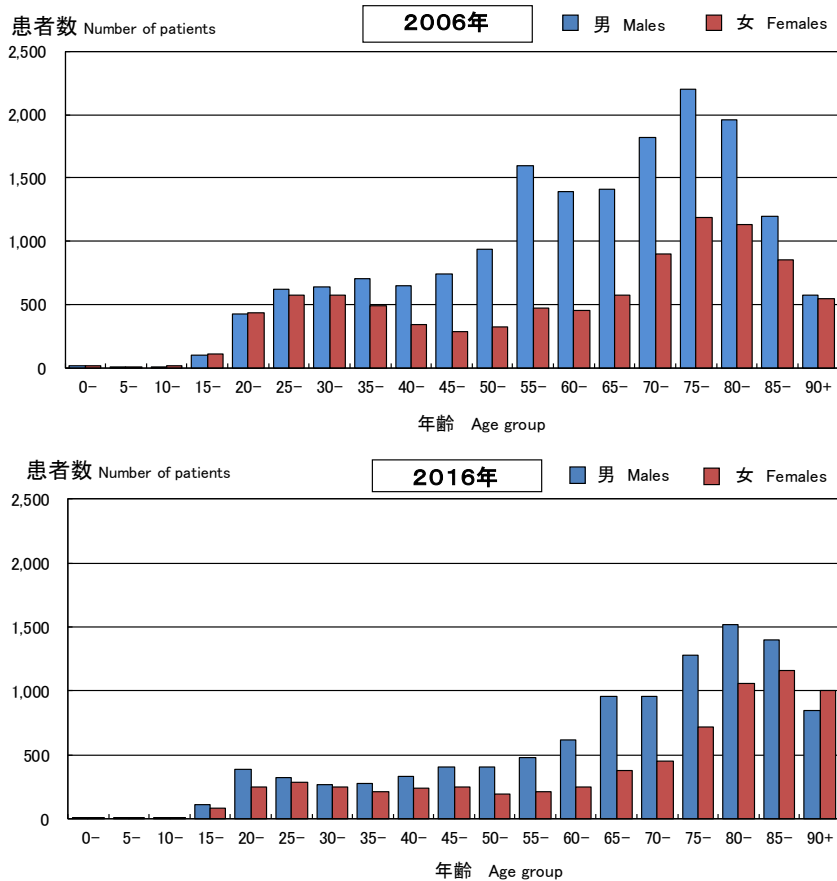


図 2 新登録結核患者数の年齢分布, 性別, 2006年・2016年  
Fig. 2 Age distribution of newly notified tuberculosis patients by sex in Japan, in 2006 and in 2016

表 1 新登録結核患者数 (全結核・初回治療・再治療別、肺結核・肺外結核別)、年齢階層別、2012~2016年  
 Table 1 Number of newly notified tuberculosis patients (all forms, new and re-treatment, pulmonary and extra-pulmonary), by age group, in Japan, 2012-2016

年齢階層 Age group	初回治療結核 New tuberculosis															再治療結核 Re-treatment tuberculosis																																												
	新登録全結核患者数 Tuberculosis notifications, all forms (*1)					新全結核患者登録率 (罹患率) Tuberculosis notification rates, all forms (*2)					肺結核 Pulmonary tuberculosis					肺外結核 Extra-pulmonary tuberculosis					肺結核 Pulmonary tuberculosis					肺外結核 Extra-pulmonary tuberculosis																																		
											喀痰塗抹陰性肺結核 Sputum-smear negative					菌検査結果不明 Bacteriological test results unknown					喀痰塗抹陽性肺結核 Sputum-smear positive					喀痰塗抹陽性肺結核 Sputum-smear positive					菌検査結果不明 Bacteriological test results unknown																													
											その他菌陽性肺結核 Other bacteriologically positive					喀痰塗抹陽性・他肺結核 Other sputum-smear negative					その他菌陽性肺結核 Other bacteriologically positive					喀痰塗抹陽性・他肺結核 Other sputum-smear negative																																		
2012	2013	2014	2015	2016	2012	2013	2014	2015	2016	2012	2013	2014	2015	2016	2012	2013	2014	2015	2016	2012	2013	2014	2015	2016	2012	2013	2014	2015	2016	2012	2013	2014	2015	2016	2012	2013	2014	2015	2016	2012	2013	2014	2015	2016																
総数 Total	21,283	20,495	19,615	18,280	17,625	16.7	16.1	15.4	14.4	13.9	7,663	7,584	7,153	6,676	6,281	5,350	5,174	4,937	4,819	4,777	2,132	2,041	1,918	1,638	1,709	193	160	173	139	106	4,609	4,274	4,255	3,976	3,844	574	535	498	455	361	336	296	296	264	249	162	163	157	119	115	22	19	17	13	10	242	249	211	181	173
0-14	63	66	49	51	59	0.4	0.4	0.3	0.3	0.4	4	0	1	2	2	4	14	11	12	12	30	26	18	17	20	6	1	4	2	5	16	20	13	16	18	1	0	0	0	1	0	1	0	0	0	1	3	1	1	1	0	0	0	1	0	1	1	1	0	0
15-19	165	165	168	163	190	2.7	2.7	2.8	2.8	3.1	38	44	31	40	45	40	37	54	47	48	46	45	50	37	69	4	4	4	3	4	23	21	15	29	14	2	5	5	1	2	5	1	3	2	5	4	5	5	3	0	2	1	1	0	1	1	2	0	1	2
20-29	1,288	1,196	1,188	1,127	1,235	9.7	9.1	9.2	9.0	9.8	320	345	321	277	269	387	346	356	378	420	304	302	277	271	320	23	15	18	12	19	188	144	164	151	160	17	12	8	15	13	18	16	15	12	11	16	7	20	9	9	2	2	1	0	1	13	7	8	2	13
30-39	1,528	1,317	1,235	1,101	1,004	8.9	7.9	7.7	7.1	6.5	423	393	323	327	269	439	379	371	313	320	310	261	255	202	207	19	17	16	12	7	258	200	202	192	157	25	19	18	21	13	19	13	14	20	12	14	15	12	2	10	2	1	2	0	0	19	19	22	12	9
40-49	1,600	1,496	1,440	1,363	1,228	9.1	8.3	7.8	7.5	6.5	514	495	453	426	363	428	418	416	396	360	244	227	229	188	198	22	16	20	20	12	286	266	234	243	228	41	28	27	28	23	28	12	18	22	13	13	10	19	15	16	1	2	0	4	1	23	22	24	21	14
50-59	1,795	1,665	1,514	1,351	1,295	11.5	10.8	9.8	8.8	8.4	631	606	550	501	433	462	429	366	357	380	239	207	187	156	151	23	15	24	14	6	323	270	277	234	243	49	57	47	34	20	28	34	23	26	26	21	18	21	5	12	3	3	3	3	5	16	26	16	21	19
60-69	3,012	2,833	2,597	2,359	2,213	16.3	15.4	14.3	13.1	12.0	1,083	1,045	936	858	792	742	716	656	616	566	306	283	253	241	205	38	29	23	20	26	644	556	547	476	498	78	74	74	77	60	55	41	52	26	23	33	41	23	19	18	5	5	2	3	1	28	43	31	23	24
70-79	4,595	4,359	4,028	3,757	3,407	33.7	31.4	28.4	26.9	24.5	1,657	1,572	1,465	1,323	1,184	1,082	1,064	961	966	856	333	340	297	257	258	33	30	30	26	6	1,163	1,081	1,017	974	917	144	110	113	85	68	80	75	65	58	53	27	29	32	28	26	5	4	4	1	0	71	54	44	39	39
80-89	5,753	5,856	5,753	5,317	5,138	77.6	76.2	72.5	66.0	60.8	2,339	2,426	2,389	2,194	2,095	1,400	1,392	1,309	1,289	1,321	261	290	290	216	228	23	32	30	23	19	1,357	1,354	1,401	1,280	1,219	193	184	168	153	120	87	85	85	81	78	28	29	20	28	18	2	1	4	1	0	63	63	57	52	40
90+	1,484	1,542	1,643	1,691	1,856	97.1	95.6	95.7	92.0	96.3	654	658	684	728	829	366	379	437	445	494	59	60	62	53	53	2	1	4	7	2	351	362	385	381	390	24	46	38	41	41	16	18	21	17	28	5	6	4	9	5	0	0	0	0	1	7	12	8	10	13

\*1: All forms include new and re-treatment tuberculosis patients.

\*2: 人口10万対率 Rate per 100,000 population

表 2 新登録潜在性結核感染症登録者数、性・年齢階層別、2014～2016年

Table 2 Newly notified latent tuberculosis infection (LTBI) patients, by sex and age group, in Japan, from 2014 to 2016

年齢 Age group	2014 年					2015 年					2016 年				
	総数 Total	性 Sex		割合 (%)	女/男 Ratio of F/M	総数 Total	性 Sex		割合 (%)	女/男 Ratio of F/M	総数 Total	性 Sex		割合 (%)	女/男 Ratio of F/M
		男 Males	女 Females				男 Males	女 Females				男 Males	女 Females		
総数 Total	7,562	3,448	4,114	100	1.2	6,675	3,046	3,629	100	1.2	7,477	3,605	3,872	100	1.1
0-4	514	247	267	6.8	1.1	420	182	238	6.3	1.3	419	203	216	5.6	1.1
5-9	140	62	78	1.9	1.3	131	67	64	2.0	1.0	96	48	48	1.3	1.0
10-14	86	45	41	1.1	0.9	110	59	51	1.6	0.9	83	46	37	1.1	0.8
15-19	173	83	90	2.3	1.1	124	55	69	1.9	1.3	162	93	69	2.2	0.7
20-24	479	195	284	6.3	1.5	342	138	204	5.1	1.5	403	189	214	5.4	1.1
25-29	538	224	314	7.1	1.4	404	169	235	6.1	1.4	493	238	255	6.6	1.1
30-34	555	238	317	7.3	1.3	444	189	255	6.7	1.3	445	189	256	6.0	1.4
35-39	607	267	340	8.0	1.3	489	193	296	7.3	1.5	443	185	258	5.9	1.4
40-44	681	266	415	9.0	1.6	499	210	289	7.5	1.4	541	226	315	7.2	1.4
45-49	666	299	367	8.8	1.2	543	216	327	8.1	1.5	607	269	338	8.1	1.3
50-54	602	237	365	8.0	1.5	543	222	321	8.1	1.4	584	239	345	7.8	1.4
55-59	610	274	336	8.1	1.2	520	247	273	7.8	1.1	616	270	346	8.2	1.3
60-64	618	298	320	8.2	1.1	497	243	254	7.4	1.0	578	301	277	7.7	0.9
65-69	432	248	184	5.7	0.7	523	280	243	7.8	0.9	683	382	301	9.1	0.8
70+	861	465	396	11.4	0.9	1,086	576	510	16.3	0.9	1,324	727	597	17.7	0.8

Ratio of F/M: Ratio of female patients to male patients

%; proportion

旧表 新登録結核患者数、および潜在性結核感染症治療対象者数、登録月別、2016年  
Previous table Newly notified tuberculosis cases by registered month, 2016

登録月 Registered month	活動性結核 Active tuberculosis									(別掲) 潜在性結 核感染症 LTBI* on treatment	
	総数 All active tuberculosis	肺結核活動性 Active pulmonary tuberculosis							菌陰性・ その他 Bacillary negative or bacillary results unknown		肺外結核 活動性 Extra- pulmonary
		喀痰塗抹陽性 Sputum smear positive					その他結 核菌陽性 Other bacillary positive				
		総数 All sputum smear positive	初回治療 New	再治療 Retreatment							
総数 Total	17,625	13,608	6,642	6,281	361	5,026	1,940	4,017	7,477		
1月 Jan.	1,282	969	468	434	34	368	133	313	432		
2月 Feb.	1,335	1,030	530	498	32	356	144	305	514		
3月 Mar.	1,462	1,103	536	512	24	416	151	359	643		
4月 Apr.	1,542	1,182	580	543	37	428	174	360	565		
5月 May	1,517	1,177	581	560	21	432	164	340	653		
6月 Jun.	1,611	1,226	588	553	35	443	195	385	739		
7月 Jul.	1,528	1,192	593	556	37	458	141	336	635		
8月 Aug.	1,609	1,246	618	584	34	470	158	363	711		
9月 Sep.	1,491	1,174	580	557	23	422	172	317	674		
10月 Oct.	1,424	1,141	580	546	34	382	179	283	674		
11月 Nov.	1,380	1,065	505	482	23	411	149	315	590		
12月 Dec.	1,444	1,103	483	456	27	440	180	341	647		

\* LTBI: Latent Tuberculosis Infection. These are not included in the number of active tuberculosis.

表3.1 新登録結核患者数、結核病種別、性・年齢階層別、1998～2016年  
Table 3.1 Newly notified tuberculosis patients by affected organ, sex and age group, in Japan, from 1998 to 2016

性・年齢 2016年 Sex, Age-group, in 2016	全結核 Tuberculosis notifications, all forms	肺結核 Pulmonary tuberculosis		肺外結核 Extra-pulmonary tuberculosis																	
		肺 Lungs	気管支 Bronchi	咽頭・ 喉頭 Pharynx / Larynx	粟粒 Miliary	胸膜炎 Pleuritis	膿胸 Empyema	肺門・縦隔 リンパ節 Hilar・ Mediastinal lymph node	他の リンパ節 Other lymph nodes	髄膜炎 Menin- ges	腸 Intes- tines	脊椎 Verte- brae	他の 骨関節 Other joints / bones	腎・尿路 Kidneys / Urinary tracts	性器 Genitals	皮膚 Skins	眼 Eyes	耳 Ears	腹膜炎 Perito- neum	心膜炎 Pericar- dium	他の 臓器 Other organs
総数 Total	17,625	14,014 (79.5)	119 (0.7)	44 (0.2)	633 (3.6)	3,141 (17.8)	30 (0.2)	121 (0.7)	835 (4.7)	164 (0.9)	264 (1.5)	194 (1.1)	101 (0.6)	83 (0.5)	19 (0.1)	80 (0.5)	25 (0.1)	15 (0.1)	184 (1.0)	81 (0.5)	149 (0.8)
男 Male	10,594	8,678 (81.9)	43 (0.4)	28 (0.3)	246 (2.3)	2,087 (19.7)	21 (0.2)	58 (0.5)	262 (2.5)	103 (1.0)	110 (1.0)	88 (0.8)	44 (0.4)	39 (0.4)	14 (0.1)	33 (0.3)	14 (0.1)	3 (0.0)	93 (0.9)	59 (0.6)	79 (0.7)
女 Female	7,031	5,336 (75.9)	76 (1.1)	16 (0.2)	387 (5.5)	1,054 (15.0)	9 (0.1)	63 (0.9)	573 (8.1)	61 (0.9)	154 (2.2)	106 (1.5)	57 (0.8)	44 (0.6)	5 (0.1)	47 (0.7)	11 (0.2)	12 (0.2)	91 (1.3)	22 (0.3)	70 (1.0)
0-14	59	40 (67.8)	2 (3.4)	0 (0.0)	1 (1.7)	3 (5.1)	0 (0.0)	8 (13.6)	8 (13.6)	2 (3.4)	0 (0.0)	0 (0.0)	1 (1.7)	0 (0.0)	0 (0.0)	0 (0.0)	0 (0.0)	0 (0.0)	0 (0.0)	0 (0.0)	0 (0.0)
15-19	190	176 (92.6)	2 (1.1)	2 (1.1)	0 (0.0)	15 (7.9)	1 (0.5)	4 (2.1)	8 (4.2)	1 (0.5)	0 (0.0)	0 (0.0)	1 (0.5)	0 (0.0)	0 (0.0)	0 (0.0)	0 (0.0)	1 (0.5)	0 (0.0)	0 (0.0)	0 (0.0)
20-29	1,235	1,072 (86.8)	11 (0.9)	2 (0.2)	8 (0.6)	143 (11.6)	1 (0.1)	19 (1.5)	99 (8.0)	7 (0.6)	9 (0.7)	10 (0.8)	3 (0.2)	2 (0.2)	0 (0.0)	3 (0.2)	0 (0.0)	1 (0.1)	10 (0.8)	1 (0.1)	6 (0.5)
30-39	1,004	843 (84.0)	11 (1.1)	3 (0.3)	16 (1.6)	107 (10.7)	2 (0.2)	8 (0.8)	75 (7.5)	14 (1.4)	12 (1.2)	6 (0.6)	3 (0.3)	2 (0.2)	2 (0.2)	3 (0.3)	5 (0.5)	3 (0.3)	8 (0.8)	2 (0.2)	11 (1.1)
40-49	1,228	992 (80.8)	13 (1.1)	7 (0.6)	12 (1.0)	150 (12.2)	3 (0.2)	15 (1.2)	87 (7.1)	18 (1.5)	22 (1.8)	3 (0.2)	6 (0.5)	1 (0.1)	1 (0.1)	2 (0.2)	5 (0.4)	3 (0.2)	14 (1.1)	0 (0.0)	8 (0.7)
50-59	1,295	1,052 (81.2)	7 (0.5)	3 (0.2)	26 (2.0)	155 (12.0)	3 (0.2)	7 (0.5)	66 (5.1)	12 (0.9)	42 (3.2)	14 (1.1)	10 (0.8)	12 (0.9)	5 (0.4)	6 (0.5)	4 (0.3)	1 (0.1)	14 (1.1)	1 (0.1)	25 (1.9)
60-69	2,213	1,721 (77.8)	11 (0.5)	8 (0.4)	50 (2.3)	354 (16.0)	5 (0.2)	18 (0.8)	128 (5.8)	25 (1.1)	44 (2.0)	29 (1.3)	14 (0.6)	15 (0.7)	2 (0.1)	13 (0.6)	6 (0.3)	3 (0.1)	19 (0.9)	11 (0.5)	23 (1.0)
70-79	3,407	2,535 (74.4)	25 (0.7)	7 (0.2)	135 (4.0)	643 (18.9)	5 (0.1)	32 (0.9)	181 (5.3)	42 (1.2)	72 (2.1)	61 (1.8)	23 (0.7)	29 (0.9)	1 (0.0)	23 (0.7)	4 (0.1)	2 (0.1)	46 (1.4)	29 (0.9)	43 (1.3)
80-89	5,138	4,066 (79.1)	31 (0.6)	9 (0.2)	289 (5.6)	1,113 (21.7)	8 (0.2)	8 (0.2)	164 (3.2)	35 (0.7)	53 (1.0)	63 (1.2)	27 (0.5)	18 (0.4)	8 (0.2)	22 (0.4)	1 (0.0)	1 (0.0)	59 (1.1)	31 (0.6)	25 (0.5)
90+	1,856	1,517 (81.7)	6 (0.3)	3 (0.2)	96 (5.2)	458 (24.7)	2 (0.1)	2 (0.1)	19 (1.0)	8 (0.4)	10 (0.5)	8 (0.4)	13 (0.7)	4 (0.2)	0 (0.0)	8 (0.4)	0 (0.0)	0 (0.0)	14 (0.8)	6 (0.3)	8 (0.4)
年 Year	総数 Total																				
1998	41,033	33,981 (82.8)	-	-	505 (1.2)	5,125 (12.5)	251 (0.6)	136 (0.3)	1,469 (3.6)	154 (0.4)	335 (0.8)	385 (0.9)	328 (0.8)	227 (0.6)	78 (0.2)	100 (0.2)	12 (0.0)	25 (0.1)	-	-	692 (1.7)
1999	43,818	36,190 (82.6)	-	-	603 (1.4)	5,586 (12.7)	221 (0.5)	143 (0.3)	1,538 (3.5)	163 (0.4)	345 (0.8)	334 (0.8)	300 (0.7)	179 (0.4)	96 (0.2)	94 (0.2)	13 (0.0)	28 (0.1)	-	-	684 (1.6)
2000	39,384	32,338 (82.1)	-	-	597 (1.5)	5,108 (13.0)	202 (0.5)	123 (0.3)	1,432 (3.6)	158 (0.4)	356 (0.9)	319 (0.8)	272 (0.7)	181 (0.5)	72 (0.2)	123 (0.3)	16 (0.0)	38 (0.1)	-	-	656 (1.7)
2001	35,489	28,868 (81.3)	-	-	642 (1.8)	4,840 (13.6)	162 (0.5)	102 (0.3)	1,368 (3.9)	177 (0.5)	275 (0.8)	276 (0.8)	274 (0.8)	172 (0.5)	72 (0.2)	104 (0.3)	11 (0.0)	25 (0.1)	-	-	619 (1.7)
2002	32,828	26,472 (80.6)	-	-	626 (1.9)	4,666 (14.2)	152 (0.5)	84 (0.3)	1,269 (3.9)	188 (0.6)	323 (1.0)	299 (0.9)	222 (0.7)	148 (0.5)	66 (0.2)	100 (0.3)	19 (0.1)	29 (0.1)	-	-	544 (1.7)
2003	31,638	25,478 (80.5)	-	-	639 (2.0)	4,539 (14.3)	142 (0.4)	83 (0.3)	1,341 (4.2)	149 (0.5)	276 (0.9)	268 (0.8)	223 (0.7)	144 (0.5)	47 (0.1)	87 (0.3)	15 (0.0)	28 (0.1)	-	-	570 (1.8)
2004	29,736	23,829 (80.1)	-	-	617 (2.1)	4,491 (15.1)	125 (0.4)	70 (0.2)	1,293 (4.3)	160 (0.5)	299 (1.0)	275 (0.9)	220 (0.7)	112 (0.4)	53 (0.2)	95 (0.3)	13 (0.0)	30 (0.1)	-	-	564 (1.9)
2005	28,319	22,655 (80.0)	-	-	585 (2.1)	4,338 (15.3)	115 (0.4)	88 (0.3)	1,151 (4.1)	180 (0.6)	296 (1.0)	233 (0.8)	201 (0.7)	130 (0.5)	37 (0.1)	98 (0.3)	11 (0.0)	33 (0.1)	-	-	536 (1.9)
2006	26,384	20,856 (79.0)	-	-	616 (2.3)	4,192 (15.9)	97 (0.4)	79 (0.3)	1,191 (4.5)	127 (0.5)	263 (1.0)	248 (0.9)	231 (0.9)	112 (0.4)	40 (0.2)	109 (0.4)	9 (0.0)	24 (0.1)	-	-	554 (2.1)
2007	25,311	20,264 (80.1)	108 (0.4)	31 (0.1)	602 (2.4)	4,134 (16.3)	75 (0.3)	57 (0.2)	1,186 (4.7)	153 (0.6)	328 (1.3)	232 (0.9)	190 (0.8)	108 (0.4)	34 (0.1)	92 (0.4)	19 (0.1)	18 (0.1)	92 (0.4)	61 (0.2)	281 (1.1)
2008	24,760	19,780 (79.9)	117 (0.5)	43 (0.2)	570 (2.3)	4,001 (16.2)	78 (0.3)	68 (0.3)	1,194 (4.8)	171 (0.7)	292 (1.2)	273 (1.1)	170 (0.7)	121 (0.5)	34 (0.1)	92 (0.4)	13 (0.1)	29 (0.1)	144 (0.6)	80 (0.3)	181 (0.7)
2009	24,170	19,278 (79.8)	121 (0.5)	36 (0.1)	604 (2.5)	3,940 (16.3)	63 (0.3)	73 (0.3)	1,221 (5.1)	162 (0.7)	321 (1.3)	241 (1.0)	182 (0.8)	100 (0.4)	23 (0.1)	121 (0.5)	26 (0.1)	22 (0.1)	168 (0.7)	88 (0.4)	179 (0.7)
2010	23,261	18,735 (80.5)	127 (0.5)	53 (0.2)	598 (2.6)	3,959 (17.0)	48 (0.2)	74 (0.3)	1,158 (5.0)	138 (0.6)	330 (1.4)	239 (1.0)	159 (0.7)	88 (0.4)	35 (0.2)	97 (0.4)	29 (0.1)	12 (0.1)	154 (0.7)	76 (0.3)	171 (0.7)
2011	22,681	17,969 (79.2)	129 (0.6)	57 (0.3)	695 (3.1)	3,929 (17.3)	52 (0.2)	70 (0.3)	1,199 (5.3)	156 (0.7)	317 (1.4)	250 (1.1)	145 (0.6)	83 (0.4)	22 (0.1)	89 (0.4)	27 (0.1)	21 (0.1)	173 (0.8)	89 (0.4)	187 (0.8)
2012	21,283	16,826 (79.1)	107 (0.5)	46 (0.2)	608 (2.9)	3,653 (17.2)	63 (0.3)	134 (0.6)	1,038 (4.9)	152 (0.7)	348 (1.6)	255 (1.2)	157 (0.7)	82 (0.4)	20 (0.1)	97 (0.5)	34 (0.2)	16 (0.1)	176 (0.8)	80 (0.4)	166 (0.8)
2013	20,495	16,380 (79.9)	131 (0.6)	34 (0.2)	635 (3.1)	3,634 (17.7)	48 (0.2)	128 (0.6)	972 (4.7)	181 (0.9)	298 (1.5)	228 (1.1)	138 (0.7)	74 (0.4)	29 (0.1)	87 (0.4)	22 (0.1)	17 (0.1)	190 (0.9)	87 (0.4)	153 (0.7)
2015	18,280	14,581 (79.8)	119 (0.7)	43 (0.2)	631 (3.5)	3,277 (17.9)	46 (0.3)	128 (0.7)	813 (4.4)	166 (0.9)	248 (1.4)	192 (1.1)	98 (0.5)	73 (0.4)	21 (0.1)	87 (0.5)	20 (0.1)	19 (0.1)	176 (1.0)	69 (0.4)	134 (0.7)
2016	17,625	14,014 (79.5)	119 (0.7)	44 (0.2)	633 (3.6)	3,141 (17.8)	30 (0.2)	121 (0.7)	835 (4.7)	164 (0.9)	264 (1.5)	194 (1.1)	101 (0.6)	83 (0.5)	19 (0.1)	80 (0.5)	25 (0.1)	15 (0.1)	184 (1.0)	81 (0.5)	149 (0.8)

注1: 結核病種別は重複あり。 Note 1: Cases having multiple organs are counted independently.

注2: 括弧内は各性・年齢階層、登録年の新登録患者数に対する割合(%)。 Note 2: Numbers in brackets indicate the proportion out of the total number of newly notified tuberculosis cases (all forms) for each sex and age group.

Table 3.2 Number and proprotio of miliary tuberculosis by age group and sex, 2004–2016

年 year	年齢総数 Age group tota		0～9歳 0-9 yrs	10～19歳 10-19 yrs	20～29歳 20-29 yrs	30～39歳 30-39 yrs	40～49歳 40-49 yrs	50～59歳 50-59 yrs	60～69歳 60-69 yrs	70～79歳 70-79 yrs	80歳以上 80 yrs+
	数 n	割合(%)	数 n割合(%)	数 n割合(%)	数 n割合(%)	数 n割合(%)	数 n割合(%)	数 n割合(%)	数 n割合(%)	数 n割合(%)	数 n割合(%)
男女計 Total	2004	617 (2.1)	0 (0.0)	6 (1.8)	19 (0.8)	22 (0.8)	24 (1.0)	44 (1.1)	82 (1.8)	199 (2.9)	221 (3.6)
	2005	585 (2.1)	1 (1.3)	3 (0.9)	13 (0.6)	38 (1.4)	25 (1.1)	41 (1.1)	77 (1.8)	180 (2.8)	207 (3.2)
	2006	616 (2.3)	1 (1.9)	1 (0.4)	19 (0.9)	24 (1.0)	27 (1.3)	42 (1.3)	84 (2.2)	173 (2.8)	245 (3.9)
	2007	602 (2.4)	0 (0.0)	2 (0.9)	10 (0.5)	20 (0.9)	23 (1.2)	26 (0.9)	75 (2.0)	190 (3.4)	256 (4.0)
	2008	570 (2.3)	1 (1.4)	1 (0.5)	17 (0.9)	18 (0.8)	21 (1.1)	40 (1.4)	64 (1.7)	162 (2.9)	246 (3.7)
	2009	604 (2.5)	3 (6.4)	2 (0.9)	6 (0.4)	26 (1.2)	25 (1.4)	38 (1.5)	68 (1.9)	164 (3.2)	272 (3.9)
	2010	598 (2.6)	0 (0.0)	2 (0.7)	11 (0.7)	20 (1.0)	22 (1.2)	23 (1.1)	80 (2.2)	139 (2.8)	301 (4.4)
	2011	695 (3.1)	1 (1.9)	2 (1.1)	18 (1.3)	21 (1.2)	28 (1.5)	27 (1.3)	58 (1.8)	155 (3.2)	385 (5.3)
	2012	608 (2.9)	0 (0.0)	2 (1.1)	4 (0.3)	10 (0.7)	20 (1.3)	28 (1.6)	53 (1.8)	147 (3.2)	344 (4.8)
	2013	635 (3.1)	0 (0.0)	4 (2.1)	9 (0.8)	21 (1.6)	15 (1.0)	23 (1.4)	59 (2.1)	151 (3.5)	353 (4.8)
	2014	642 (3.3)	1 (3.1)	2 (1.1)	7 (0.6)	15 (1.2)	12 (0.8)	23 (1.5)	53 (2.0)	133 (3.3)	396 (5.4)
	2015	631 (3.5)	0 (0.0)	2 (1.1)	11 (1.0)	8 (0.7)	24 (1.8)	17 (1.3)	36 (1.5)	153 (4.1)	380 (5.4)
	2016	633 (3.6)	1 (2.7)	0 (0.0)	8 (0.6)	16 (1.6)	12 (1.0)	26 (2.0)	50 (2.3)	135 (4.0)	385 (5.5)
男 Males	2004	282 (1.5)	0 (0.0)	2 (1.3)	10 (0.8)	15 (0.9)	21 (1.3)	32 (1.1)	49 (1.5)	78 (1.7)	75 (2.1)
	2005	269 (1.5)	1 (2.2)	2 (1.2)	7 (0.6)	24 (1.5)	15 (1.0)	23 (0.8)	47 (1.5)	83 (2.0)	67 (1.8)
	2006	309 (1.8)	0 (0.0)	1 (0.9)	12 (1.1)	17 (1.3)	23 (1.6)	34 (1.3)	55 (2.0)	78 (1.9)	89 (2.4)
	2007	250 (1.5)	0 (0.0)	2 (1.8)	6 (0.6)	13 (1.0)	14 (1.1)	16 (0.7)	45 (1.7)	76 (2.0)	78 (2.0)
	2008	241 (1.5)	0 (0.0)	1 (0.9)	13 (1.4)	12 (1.0)	17 (1.4)	26 (1.3)	39 (1.5)	65 (1.8)	68 (1.8)
	2009	211 (1.4)	0 (0.0)	1 (1.0)	2 (0.2)	18 (1.6)	18 (1.5)	21 (1.2)	26 (1.0)	57 (1.7)	68 (1.7)
	2010	232 (1.6)	0 (0.0)	2 (1.3)	7 (0.8)	11 (1.1)	19 (1.6)	14 (0.9)	40 (1.5)	54 (1.7)	85 (2.1)
	2011	283 (2.0)	1 (4.2)	0 (0.0)	12 (1.6)	14 (1.6)	17 (1.5)	18 (1.2)	34 (1.5)	66 (2.1)	121 (2.9)
	2012	243 (1.9)	0 (0.0)	1 (1.0)	4 (0.6)	7 (0.8)	17 (1.7)	22 (1.7)	33 (1.6)	46 (1.6)	113 (2.8)
	2013	234 (1.9)	0 (0.0)	2 (2.0)	2 (0.3)	14 (2.0)	7 (0.8)	12 (1.0)	34 (1.7)	52 (1.8)	111 (2.7)
	2014	249 (2.1)	0 (0.0)	1 (1.1)	3 (0.5)	7 (1.0)	7 (0.8)	9 (0.9)	41 (2.2)	66 (2.5)	115 (2.8)
	2015	231 (2.1)	0 (0.0)	1 (1.1)	6 (1.0)	7 (1.2)	19 (2.3)	11 (1.2)	20 (1.2)	65 (2.6)	102 (2.7)
	2016	246 (2.3)	1 (4.8)	0 (0.0)	5 (0.7)	11 (2.0)	7 (0.9)	14 (1.6)	26 (1.6)	60 (2.7)	122 (3.2)
女 Females	2004	335 (3.2)	0 (0.0)	4 (2.2)	9 (0.7)	7 (0.6)	3 (0.4)	12 (1.2)	33 (2.4)	121 (5.3)	146 (5.5)
	2005	316 (3.1)	0 (0.0)	1 (0.6)	6 (0.5)	14 (1.3)	10 (1.5)	18 (2.0)	30 (2.5)	97 (4.5)	140 (5.3)
	2006	307 (3.3)	1 (4.0)	0 (0.0)	7 (0.7)	7 (0.7)	4 (0.6)	8 (1.0)	29 (2.8)	95 (4.6)	156 (6.1)
	2007	352 (3.9)	0 (0.0)	0 (0.0)	4 (0.4)	7 (0.7)	9 (1.4)	10 (1.4)	30 (2.9)	114 (5.9)	178 (6.7)
	2008	329 (3.6)	1 (3.3)	0 (0.0)	4 (0.4)	6 (0.6)	4 (0.6)	14 (2.0)	25 (2.4)	97 (5.2)	178 (6.4)
	2009	393 (4.3)	3 (10.7)	1 (0.8)	4 (0.5)	8 (0.8)	7 (1.0)	17 (2.3)	42 (4.2)	107 (5.9)	204 (6.7)
	2010	366 (4.2)	0 (0.0)	0 (0.0)	4 (0.6)	9 (1.0)	3 (0.5)	9 (1.5)	40 (4.0)	85 (4.9)	216 (7.3)
	2011	412 (4.7)	0 (0.0)	2 (2.0)	6 (0.9)	7 (0.8)	11 (1.7)	9 (1.5)	24 (2.5)	89 (5.2)	264 (8.5)
	2012	365 (4.4)	0 (0.0)	1 (1.2)	0 (0.0)	3 (0.4)	3 (0.5)	6 (1.2)	20 (2.3)	101 (6.1)	231 (7.1)
	2013	401 (5.0)	0 (0.0)	2 (2.2)	7 (1.2)	7 (1.2)	8 (1.4)	11 (2.1)	25 (3.0)	99 (6.4)	242 (7.4)
	2014	393 (5.2)	1 (6.3)	1 (1.1)	4 (0.7)	8 (1.4)	5 (0.9)	14 (2.8)	12 (1.6)	67 (4.9)	281 (8.7)
	2015	400 (5.6)	0 (0.0)	1 (1.2)	5 (1.0)	1 (0.2)	5 (1.0)	6 (1.4)	16 (2.5)	88 (6.8)	278 (8.8)
	2016	387 (5.5)	0 (0.0)	0 (0.0)	3 (0.6)	5 (1.1)	5 (1.0)	12 (2.9)	24 (3.8)	75 (6.4)	263 (8.1)

注1: 他結核病類との重複あり。 Note1: Cases having multiple organs are counted independently.

注2: 割合は各年齢層層新登録患者数に対する割合。 Note2: % indicate proportion out of the total number of newly notified tuberculosis cases for each age group.

【外国生れ】

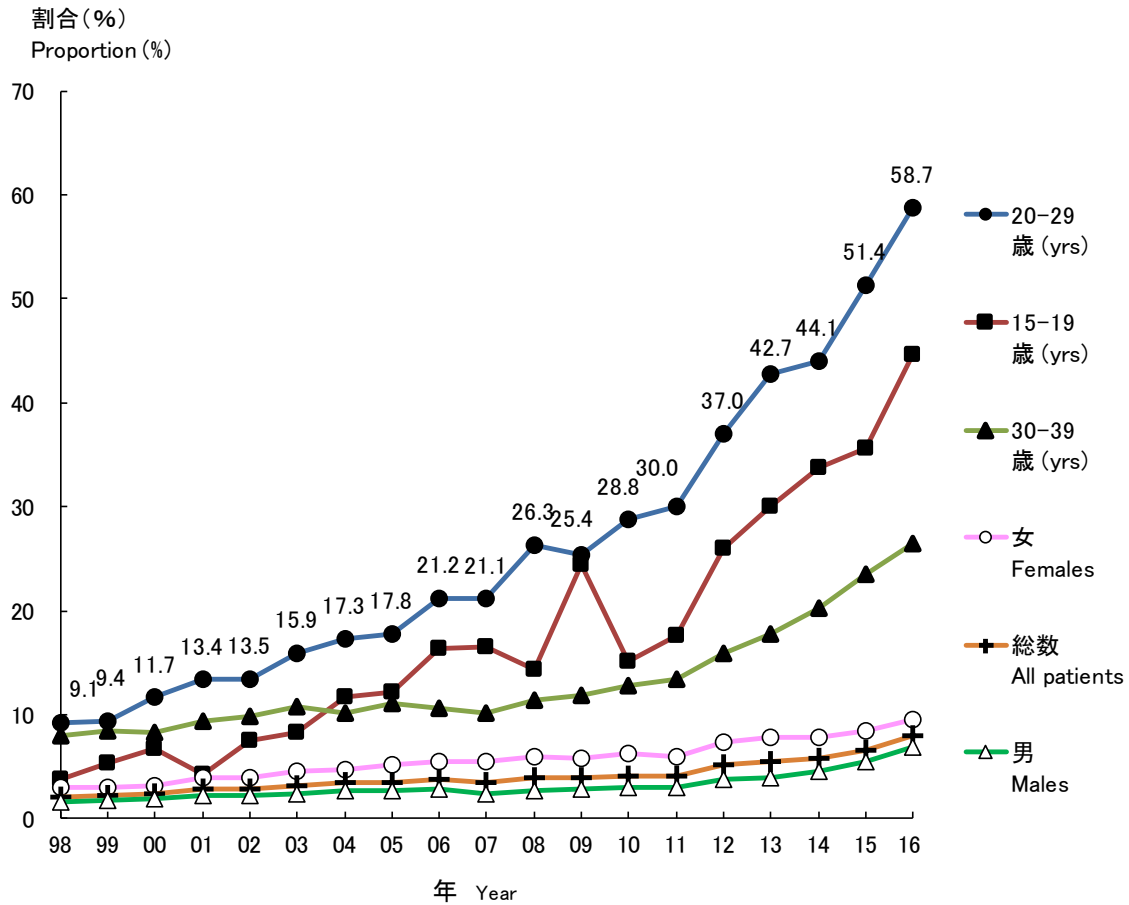


図 3 新登録結核患者に占める外国生まれ結核患者割合の推移、性別・特定年齢階層別、1998～2016年  
 Fig. 3 Annual trend of proportion of foreign-born among newly notified tuberculosis patients, by sex and age group, from 1998 to 2016  
 割合：国籍または出生国不明を除く。  
 Those whose country of birth is unknown are excluded from the numerator.

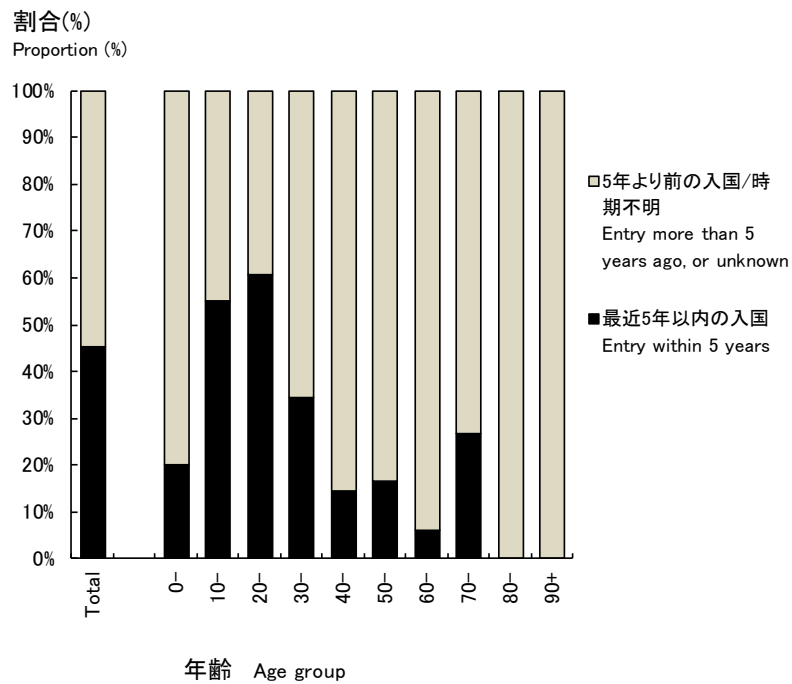


図 4 外国生まれ結核患者の入国時期別割合、年齢階層別、2016年  
 Fig. 4 Proportion of foreign-born tuberculosis patients, by age group and time of entry to Japan, in 2016

表4.1 新登録全結核患者の発生動向年次推移, 国籍または出生国別, 性別, 1998~2016年  
 Table 4.1 Annual trend of newly notified tuberculosis patients by nationality or country of birth, and by sex, from 1998 to 2016

暦年 Year	新登録全結核 患者数 Number of newly notified tuberculosis patients, all forms	日本生まれ Born in Japan	外国籍もしくは 外国生まれ Foreign nationalities or Foreign borns (*1)	国籍または 出生国不明 Nationalities or country of birth unknown	外国生まれ 割合 (%) Proportion of foreign borns (%)(*2)	性 Sex (*3)		女-男比 Ratio of Females to Males
						男 Males	女 Females	
1998	41,033	34,382	739	5,912	2.1	365	374	1.0
1999	43,818	37,094	821	5,903	2.2	415	406	1.0
2000	39,384	33,720	837	4,827	2.4	436	401	0.9
2001	35,489	30,305	866	4,318	2.8	442	424	1.0
2002	32,828	28,667	824	3,337	2.8	411	413	1.0
2003	31,638	27,665	906	3,067	3.2	433	473	1.1
2004	29,736	26,205	931	2,600	3.4	479	452	0.9
2005	28,319	25,247	923	2,149	3.5	438	485	1.1
2006	26,384	23,505	920	1,959	3.8	444	476	1.1
2007	25,311	23,451	842	1,018	3.5	364	478	1.3
2008	24,760	23,163	945	652	3.9	416	529	1.3
2009	24,170	22,808	938	424	4.0	414	524	1.3
2010	23,261	21,976	952	333	4.2	424	528	1.2
2011	22,681	21,372	921	388	4.1	416	505	1.2
2012	21,283	19,555	1,069	659	5.2	474	595	1.3
2013	20,495	18,589	1,064	842	5.4	468	596	1.3
2014	19,615	17,727	1,101	787	5.8	531	570	1.1
2015	18,280	16,396	1,164	720	6.6	581	583	1.0
2016	17,625	15,504	1,338	783	7.9	693	645	0.9

\*1: 2011年までは外国籍結核患者数、2012年以降外国生まれ結核患者数。

Number of tuberculosis patients with foreign nationalities until 2011, number of foreign-born patients afterwards.

\*2: 2011年までは外国籍患者割合、2012年以降外国生まれ患者割合(国籍または出生国不明を除く)。Proportion of Tuberculosis patients with foreign nationalities until 2011, proportion of foreign-born patients afterwards, excluding those of unknown nationality or country of birth.

\*3: 外国籍または外国生まれにおける性別。

Sex distribution among foreign nationalities or foreign-borns.

表4.2 新登録外国人結核患者数・割合、年齢階層別、1998～2016年

Table 4.2 Annual trend of foreign-borns by age group, 1998-2016

年 year	年齢 Age group	0～9歳 0-9 yrs		10～19歳 10-19 yrs		20～29歳 20-29 yrs		30～39歳 30-39 yrs		40～49歳 40-49 yrs		50～59歳 50-59 yrs		60～69歳 60-69 yrs		70～79歳 70-79 yrs		80歳以上 80 yrs+	
		総数 Total	数n 割合(%)	数n 割合(%)	数n 割合(%)	数n 割合(%)	数n 割合(%)	数n 割合(%)	数n 割合(%)	数n 割合(%)	数n 割合(%)	数n 割合(%)	数n 割合(%)	数n 割合(%)	数n 割合(%)	数n 割合(%)	数n 割合(%)	数n 割合(%)	
1998	739	6	(0.8)	20	(2.7)	300	(40.6)	215	(29.1)	83	(11.2)	44	(6.0)	23	(3.1)	29	(3.9)	19	(2.6)
1999	821	11	(1.3)	27	(3.3)	319	(38.9)	241	(29.4)	89	(10.8)	54	(6.6)	27	(3.3)	35	(4.3)	18	(2.2)
2000	837	14	(1.7)	26	(3.1)	357	(42.7)	235	(28.1)	92	(11.0)	49	(5.9)	23	(2.7)	27	(3.2)	14	(1.7)
2001	866	4	(0.5)	17	(2.0)	361	(41.7)	249	(28.8)	110	(12.7)	55	(6.4)	27	(3.1)	25	(2.9)	18	(2.1)
2002	824	5	(0.6)	24	(2.9)	345	(41.9)	249	(30.2)	81	(9.8)	47	(5.7)	26	(3.2)	24	(2.9)	23	(2.8)
2003	906	9	(1.0)	25	(2.8)	399	(44.0)	268	(29.6)	98	(10.8)	38	(4.2)	22	(2.4)	27	(3.0)	20	(2.2)
2004	931	4	(0.4)	32	(3.4)	402	(43.2)	250	(26.9)	107	(11.5)	59	(6.3)	28	(3.0)	27	(2.9)	22	(2.4)
2005	923	5	(0.5)	37	(4.0)	378	(41.0)	273	(29.6)	105	(11.4)	62	(6.7)	26	(2.8)	16	(1.7)	21	(2.3)
2006	920	5	(0.5)	34	(3.7)	409	(44.5)	234	(25.4)	113	(12.3)	59	(6.4)	35	(3.8)	11	(1.2)	20	(2.2)
2007	842	6	(0.7)	35	(4.2)	390	(46.3)	224	(26.6)	102	(12.1)	43	(5.1)	15	(1.8)	12	(1.4)	15	(1.8)
2008	945	4	(0.4)	27	(2.9)	468	(49.5)	237	(25.1)	114	(12.1)	41	(4.3)	25	(2.6)	10	(1.1)	19	(2.0)
2009	938	2	(0.2)	50	(5.3)	427	(45.5)	243	(25.9)	103	(11.0)	41	(4.4)	30	(3.2)	20	(2.1)	22	(2.3)
2010	952	5	(0.5)	41	(4.3)	438	(46.0)	242	(25.4)	114	(12.0)	39	(4.1)	35	(3.7)	18	(1.9)	20	(2.1)
2011	921	5	(0.5)	30	(3.3)	419	(45.5)	226	(24.5)	126	(13.7)	53	(5.8)	20	(2.2)	19	(2.1)	23	(2.5)
2012	1,069	4	(0.4)	45	(4.2)	468	(43.8)	237	(22.2)	181	(16.9)	63	(5.9)	33	(3.1)	17	(1.6)	21	(2.0)
2013	1,064	3	(0.3)	52	(4.9)	494	(46.4)	225	(21.1)	147	(13.8)	65	(6.1)	30	(2.8)	25	(2.3)	23	(2.2)
2014	1,101	5	(0.5)	59	(5.4)	511	(46.4)	243	(22.1)	151	(13.7)	71	(6.4)	26	(2.4)	16	(1.5)	19	(1.7)
2015	1,164	3	(0.3)	63	(5.4)	565	(48.5)	252	(21.6)	134	(11.5)	74	(6.4)	27	(2.3)	19	(1.6)	27	(2.3)
2016	1,338	5	(0.4)	89	(6.7)	712	(53.2)	258	(19.3)	139	(10.4)	66	(4.9)	33	(2.5)	15	(1.1)	21	(1.6)

注1:割合は新登録外国人結核患者総数に対する各年齢階層患者数の割合

Note1: % indicate proportion out of the total number of newly notified foreign-born tuberculosis cases for each age group.

注2: 2011年までは外国国籍患者数。2012年以降は外国生まれ患者数

Note2: "Foreign nationalities" until 2011, "Foreign-born" since 2012.



表5 外国生まれ結核患者及び薬剤耐性結核の数および割合、出生国別、入国時期別 2016年  
Table 5 Number and proportion of foreign-born tuberculosis patients by country of birth and time of entry to Japan, 2016

総数 Total	薬剤耐性 Drug resistance								最近5年以内入国 Entry within 5 years	薬剤耐性 Drug resistance					5年以上前入国/時期不明 Entry more than 5 years ago, or unknown	薬剤耐性 Drug resistance																
	多剤耐性 MDR		INH 耐性 Any INH resistance		RFP耐性 Any RFP resistance		1剤以上耐性 Any resistance*			多剤耐性 MDR		INH 耐性 Any INH resistance		RFP耐性 Any RFP resistance		1剤以上耐性 Any resistance*		多剤耐性 MDR		INH 耐性 Any INH resistance		RFP耐性 Any RFP resistance		1剤以上耐性 Any resistance*								
	n	(%)	n	(%)	n	(%)	n	(%)		n	(%)	n	(%)	n		(%)	n	(%)	n	(%)	n	(%)	n	(%)	n	(%)						
総数 Total	1,338	(100.0)	15	(100.0)	76	(100.0)	20	(100.0)	112	(100.0)	総数 Total	608	(100.0)	9	(100.0)	37	(100.0)	14	(100.0)	58	(100.0)	総数 Total	730	(100.0)	6	(100.0)	39	(100.0)	6	(100.0)	54	(100.0)
フィリピン Philippines	318	(23.8)	1	(6.7)	21	(27.6)	1	(5.0)	25	(22.3)	ベトナム Vietnam	138	(22.7)	2	(22.2)	17	(45.9)	4	(28.6)	28	(48.3)	フィリピン Philippines	231	(31.6)	6	(41.0)	16	(41.0)	19	(35.2)		
中国 China	272	(20.3)	5	(33.3)	19	(25.0)	5	(25.0)	29	(25.9)	中国 China	133	(21.9)	2	(22.2)	10	(27.0)	2	(14.3)	15	(25.9)	中国 China	139	(19.0)	3	(50.0)	9	(23.1)	3	(50.0)	14	(25.9)
ベトナム Vietnam	212	(15.8)	2	(13.3)	22	(28.9)	4	(20.0)	35	(31.3)	ネパール Nepal	87	(14.3)	1	(11.1)	1	(2.7)	1	(7.1)	1	(1.7)	ベトナム Vietnam	74	(10.1)	5	(12.8)	5	(12.8)	7	(13.0)		
ネパール Nepal	135	(10.1)	1	(6.7)	1	(1.3)	1	(5.0)	2	(1.8)	フィリピン Philippines	87	(14.3)	1	(11.1)	5	(13.5)	1	(7.1)	6	(10.3)	ネパール Nepal	48	(6.6)			1	(1.9)	1	(1.9)		
インドネシア Indonesia	90	(6.7)			2	(2.6)			2	(1.8)	インドネシア Indonesia	53	(8.7)							5	(8.6)	韓国 Republic of Korea	38	(5.2)			1	(2.6)	3	(5.6)		
ミャンマー Myanmar	58	(4.3)	2	(13.3)	5	(6.6)	3	(15.0)	8	(7.1)	ミャンマー Myanmar	35	(5.8)	2	(22.2)	3	(8.1)	3	(21.4)	5	(8.6)	インドネシア Indonesia	37	(5.1)			2	(5.1)	2	(3.7)		
韓国 Republic of Korea	45	(3.4)	1	(6.7)	2	(2.6)	2	(10.0)	5	(4.5)	タイ Thailand	19	(1.4)									ミャンマー Myanmar	23	(3.2)			2	(5.1)	3	(5.6)		
タイ Thailand	19	(1.4)								その他 Others	63	(10.4)	1	(11.1)	1	(2.7)	2	(14.3)	2	(3.4)	その他 Others	59	(8.1)	2	(33.3)	3	(7.7)	2	(33.3)	3	(5.6)	
モンゴル Mongolia	16	(1.2)	2	(13.3)	2	(2.6)	2	(10.0)	2	(1.8)	国名不明 Unknown	12	(2.0)			1	(7.1)	1	(1.7)	国名不明 Unknown	70	(9.6)	1	(16.7)	1	(2.6)	1	(16.7)	2	(3.7)		
ブラジル Brazil	14	(1.0)																														
インド India	12	(0.9)			1	(1.3)			1	(0.9)																						
その他 Others	65	(4.9)																														
国名不明 Unknown	82	(6.1)	1	(6.7)	1	(1.3)	2	(10.0)	3	(2.7)																						

国名: 10名以上患者発生届けのあった国名を掲載 Only those countries with more than ten tuberculosis cases are listed.

MDR: Multi-drug resistant, i.e., resistant to at least INH and RFP INH: isoniazid RFP: rifampicin

\*: INH, RFP, SM EBの4剤のうちのいずれかに耐性 resistant to either INH, RFP, SM, or EB

表6 職業分類別外国生まれ結核患者数、性別・年齢階層別、2016年  
Table 6 Occupation of foreign-born tuberculosis patients by sex and age group, in Japan, in 2016

年齢 Age group	総数 Total	(%)	接客業 Service trade workers	医療職 Health care workers	教員・ 保育士 Teachers / Nursery staff	乳幼児 ・児童 Infants / Children	生徒・ 学生 Students	他常用勤 労者 Other regular employees	他臨時雇 ・日雇 Other temporary /day laborer	他自営・ 自由業 Other self- employed	家事 従業者 Housekee pers	無職・ その他 Unemplo- yed / Others	不明 Unknown
		(%)	(%)	(%)	(%)	(%)	(%)	(%)	(%)	(%)	(%)	(%)	(%)
総数 Total	1,338	(100)	47 (4)	13 (1)	4 (0)	15 (1)	427 (32)	385 (29)	121 (9)	19 (1)	43 (3)	230 (17)	34 (3)
男 Males	693	(100)	15 (2)	1 (0)	1 (0)	6 (1)	277 (40)	233 (34)	57 (8)	11 (2)	0 (0)	79 (11)	13 (2)
女 Females	645	(100)	32 (5)	12 (2)	3 (0)	9 (1)	150 (23)	152 (24)	64 (10)	8 (1)	43 (7)	151 (23)	21 (3)
0-14	12	(100)	—	—	—	12 (100)	—	—	—	—	—	—	—
15-19	82	(100)	—	—	—	3 (4)	60 (73)	9 (11)	6 (7)	—	—	4 (5)	—
20-24	389	(100)	7 (2)	—	—	—	225 (58)	101 (26)	19 (5)	2 (1)	2 (1)	30 (8)	3 (1)
25-29	323	(100)	7 (2)	2 (1)	—	—	111 (34)	127 (39)	26 (8)	4 (1)	4 (1)	38 (12)	4 (1)
30-34	155	(100)	17 (11)	1 (1)	2 (1)	—	21 (14)	51 (33)	17 (11)	3 (2)	13 (8)	26 (17)	4 (3)
35-39	103	(100)	6 (6)	2 (2)	1 (1)	—	6 (6)	37 (36)	15 (15)	1 (1)	7 (7)	22 (21)	6 (6)
40-44	72	(100)	4 (6)	2 (3)	—	—	4 (6)	22 (31)	11 (15)	—	10 (14)	16 (22)	3 (4)
45-49	67	(100)	3 (4)	5 (7)	—	—	—	16 (24)	15 (22)	3 (4)	4 (6)	13 (19)	8 (12)
50-54	40	(100)	—	1 (3)	—	—	—	17 (43)	3 (8)	3 (8)	1 (3)	15 (38)	—
55-59	26	(100)	2 (8)	—	1 (4)	—	—	5 (19)	5 (19)	1 (4)	—	10 (38)	2 (8)
60+	69	(100)	1 (1)	—	—	—	—	—	4 (6)	2 (3)	2 (3)	56 (81)	4 (6)

旧表 外国人新登録結核患者の発生動向, 暦年別, 年齢階層別, 1998~2016年  
 Previous table Trend of newly notified foreign nationals with TB by year and age group, 1998-2016

暦年 Year	外国人 All foreigners	年齢 Age group							20歳代 割合(%) Percentage of 20-29 yrs in total
		0-14	15-19	20-29	30-39	40-49	50-59	60+	
1998	739	11	15	300	215	83	44	71	40.6
1999	821	13	25	319	241	89	54	80	38.9
2000	837	16	24	357	235	92	49	64	42.7
2001	866	6	15	361	249	110	55	70	41.7
2002	824	6	23	345	249	81	47	73	41.9
2003	906	12	22	399	268	98	38	69	44.0
2004	931	6	30	402	250	107	59	77	43.2
2005	923	9	33	378	273	105	62	63	41.0
2006	920	6	33	409	234	113	59	66	44.5
2007	842	9	32	390	224	102	43	42	46.3
2008	945	5	26	468	237	114	41	54	49.5
2009	938	3	49	427	243	103	41	72	45.5
2010	952	9	37	438	242	114	39	73	46.0
2011	921	8	27	419	226	126	53	62	45.5
2012	1069	7	42	468	237	181	63	71	43.8
2013	1064	7	48	494	225	147	65	78	46.4
2014	1101	8	56	511	243	151	71	61	46.4
2015	1164	9	57	565	252	134	74	73	48.5
2016	1338	12	82	712	258	139	66	69	53.2

2011年までは外国籍結核患者数、2012年以降外国生まれ結核患者数

Number of tuberculosis patients with foreign nationalities until 2011, number of foreign-born patients afterwards.

旧表 都道府県・政令指定都市別外国人結核患者数, 2016年  
Previous table Distribution of foreign nationals with tuberculosis by prefecture and designated city, 2016

		新登録患者数 Newly notified patients	外国生まれ Foreign born	割合 Proportion (%)
全国	Japan	17625	1338	7.6
福岡市	Fukuoka city	192	35	18.2
群馬県	Gunma	183	32	17.5
静岡県	Shizuoka	223	35	15.7
広島県	Hiroshima	215	31	14.4
岡山市	Okayama city	77	11	14.3
相模原市	Sagamihara city	57	8	14.0
東京都	Tokyo	2340	308	13.2
愛知県	Aichi	776	87	11.2
仙台市	Sendai city	87	9	10.3
静岡市	Shizuoka city	97	10	10.3
新潟市	Niigata city	79	8	10.1
栃木県	Tochigi	218	22	10.1
岐阜県	Gifu	329	33	10.0
山口県	Ymaguchi	178	17	9.6
浜松市	Hamamatsu city	105	10	9.5
三重県	Mie	241	22	9.1
千葉県	Chiba	748	68	9.1
茨城県	Ibaraki	354	32	9.0
さいたま市	Saitama city	182	16	8.8
富山県	Toyama	117	10	8.5
山梨県	Yamanashi	72	6	8.3
神奈川県	Kanagawa	348	28	8.0
島根県	Shimane	87	7	8.0
新潟県	Niigata	137	11	8.0
長野県	Nagano	165	13	7.9
埼玉県	Saitama	797	61	7.7
川崎市	Kawasaki city	249	19	7.6
鳥取県	Totori	66	5	7.6
名古屋市	Nagoya city	494	36	7.3
滋賀県	Shiga	152	11	7.2
福井県	Fukui	87	6	6.9
沖縄県	Okinawa	203	14	6.9
神戸市	Kobe city	285	19	6.7
香川県	Kagawa	138	9	6.5
山形県	Yamagata	80	5	6.3
横浜市	Yokohama city	538	33	6.1
宮城県	Miyagi	98	6	6.1
熊本県	Kumamoto	147	9	6.1
愛媛県	Ehime	133	8	6.0
大分県	Oita	185	11	5.9
奈良県	Nara	191	11	5.8
千葉市	Chiba city	158	9	5.7
石川県	Ishikawa	126	7	5.6
広島市	Hiroshima city	109	6	5.5

外国人患者が5.5%以上(国籍不明を含む)の県・市を掲載。政令指定都市は県に含まず(別掲)  
Those prefectures and designated cities with 5% or more tuberculosis cases with foreign nationals are listed.

The figures of prefectures do not include those cases registered to designated cities in the respective prefecture, if applicable.

E.g., the figure of Kanagawa prefecture does not include those of Yokohama and Kawasaki cities.