

【患者発見】

表1 新登録結核患者の発見方法、2007～2016年  
Table1 Proportion of mode of detection among newly notified tuberculosis patients, 2007-2016

年 Year	新登録患者 Newly notified TB patients	個別健診 Individual medical checkup	定期健診 Mass screening								接触者健診 Contact examination				医療機関 Medical institutions			その他 Others	不明 Unknown							
			学校 Schools		住民 Residents		職場 Employees		施設 Facilities		家族 Family	その他 Others	有症状受診(*1) Outpatients with TB symptoms(*1)	入院中 Inpatients with other diseases	通院中 Outpatients with other diseases											
			n	%	n	%	n	%	n	%						n	%			n	%	n	%			
2007	25,311	537	2.1	217	0.9	636	2.5	1,931	7.6	145	0.6	355	1.4	370	1.5	16,997	67.2	2,031	8.0	1,611	6.4	340	1.3	141	0.6	
2008	24,760	639	2.6	195	0.8	486	2.0	1,877	7.6	144	0.6	325	1.3	410	1.7	15,347	62.0	2,681	10.8	2,100	8.5	316	1.3	240	1.0	
2009	24,170	611	2.5	197	0.8	550	2.3	1,749	7.2	136	0.6	324	1.3	311	1.3	14,864	61.5	2,752	11.4	2,220	9.2	301	1.2	155	0.6	
2010	23,261	507	2.2	244	1.0	544	2.3	1,618	7.0	128	0.6	313	1.3	350	1.5	13,901	59.8	2,792	12.0	2,305	9.9	333	1.4	226	1.0	
2011	22,681	470	2.1	188	0.8	497	2.2	1,531	6.8	126	0.6	354	1.6	482	2.1	13,177	58.1	2,916	12.9	2,515	11.1	330	1.5	95	0.4	
2012	21,283	409	1.9	163	0.8	498	2.3	1,424	6.7	121	0.6	315	1.5	374	1.8	12,284	57.7	2,941	13.8	2,312	10.9	357	1.7	85	0.4	
2013	20,495	413	2.0	172	0.8	455	2.2	1,246	6.1	89	0.4	314	1.5	333	1.6	11,978	58.4	2,745	13.4	2,306	11.3	336	1.6	108	0.5	
2014	19,615	344	1.8	201	1.0	404	2.1	1,221	6.2	92	0.5	303	1.5	333	1.7	11,441	58.3	2,591	13.2	2,210	11.3	328	1.7	147	0.7	
2015	18,280	319	1.7	192	1.1	359	2.0	1,147	6.3	78	0.4	248	1.4	263	1.4	10,556	57.7	2,630	14.4	2,043	11.2	144	0.8	127	0.7	
2016	17,625	319	1.8	250	1.4	355	2.0	1,056	6.0	98	0.6	211	1.2	409	2.3	10,073	57.2	2,471	14.0	1,971	11.2	146	0.8	98	0.6	
2016年 Age group																										
0~9	37	0	0.0	1	2.7	0	0.0	0	0.0	0	0.0	9	24.3	2	5.4	20	54.1	0	0.0	2	5.4	3	8.1	0	0.0	
10~19	212	2	0.9	67	31.6	1	0.5	6	2.8	0	0.0	20	9.4	29	13.7	72	34.0	0	0.0	3	1.4	1	0.5	2	0.9	
20~29	1,235	28	2.3	164	13.3	2	0.2	226	18.3	2	0.2	27	2.2	104	8.4	588	47.6	13	1.1	19	1.5	6	0.5	7	0.6	
30~39	1,004	23	2.3	14	1.4	7	0.7	228	22.7	3	0.3	21	2.1	48	4.8	564	56.2	33	3.3	39	3.9	5	0.5	4	0.4	
40~49	1,228	36	2.9	4	0.3	22	1.8	239	19.5	8	0.7	35	2.9	64	5.2	660	53.7	50	4.1	78	6.4	16	1.3	8	0.7	
50~59	1,295	35	2.7	0	0.0	15	1.2	202	15.6	7	0.5	19	1.5	41	3.2	745	57.5	71	5.5	128	9.9	7	0.5	11	0.8	
60~69	2,213	54	2.4	0	0.0	76	3.4	136	6.1	14	0.6	37	1.7	51	2.3	1,266	57.2	229	10.3	273	12.3	39	1.8	21	0.9	
70~79	3,407	59	1.7	0	0.0	127	3.7	16	0.5	10	0.3	21	0.6	36	1.1	1,947	57.1	551	16.2	562	16.5	30	0.9	17	0.5	
80~89	5,138	66	1.3	0	0.0	93	1.8	3	0.1	30	0.6	19	0.4	25	0.5	3,058	59.5	1,068	20.8	704	13.7	29	0.6	23	0.4	
90~	1,856	16	0.9	0	0.0	12	0.6	0	0.0	24	1.3	3	0.2	9	0.5	1,153	62.1	456	24.6	163	8.8	10	0.5	5	0.3	

TB: tuberculosis

\*1 有症状:咳・痰・血痰・咯血等の「呼吸器症状」や、喘鳴、胸痛、背部痛、息切れ、発熱、寝汗、全身倦怠、体重減少等の「その他の症状」を有する場合。

TB symptoms: Respiratory symptoms such as cough, sputum expectoration, bloody sputum, and hemoptysis; and other symptoms such as wheezing, chest pain, back pain, dyspnea, fever, night sweating, fatigue tendency, and weight loss.

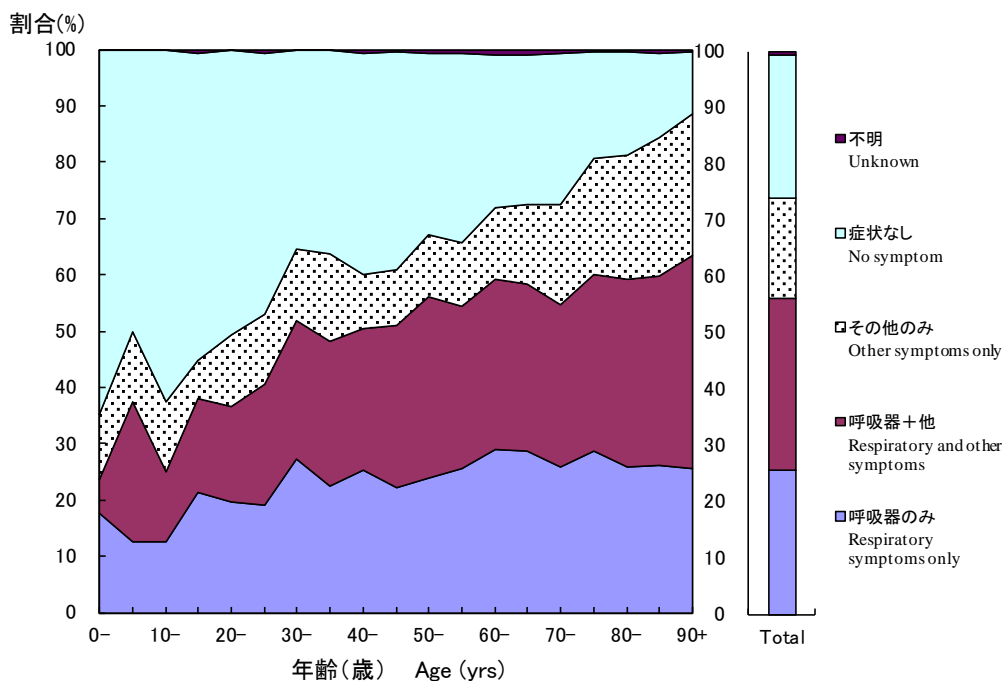


図1 新登録肺結核中年齢5歳階層別症状の有無、2016年

Fig.1 Proportion of symptoms among newly notified pulmonary tuberculosis patients by 5- years age group, in 2016

呼吸器症状は咳、痰、血痰、咯血を含む。その他の症状は喘鳴、胸痛、背部痛、息切れ、発熱、寝汗、全身倦怠、体重減少を含む。

Respiratory symptoms include cough, sputum expectoration, bloody sputum, and hemoptysis. Other symptoms include wheezing, chest pain, back pain, dyspnea, fever, night sweating, fatigue tendency, and weight loss.

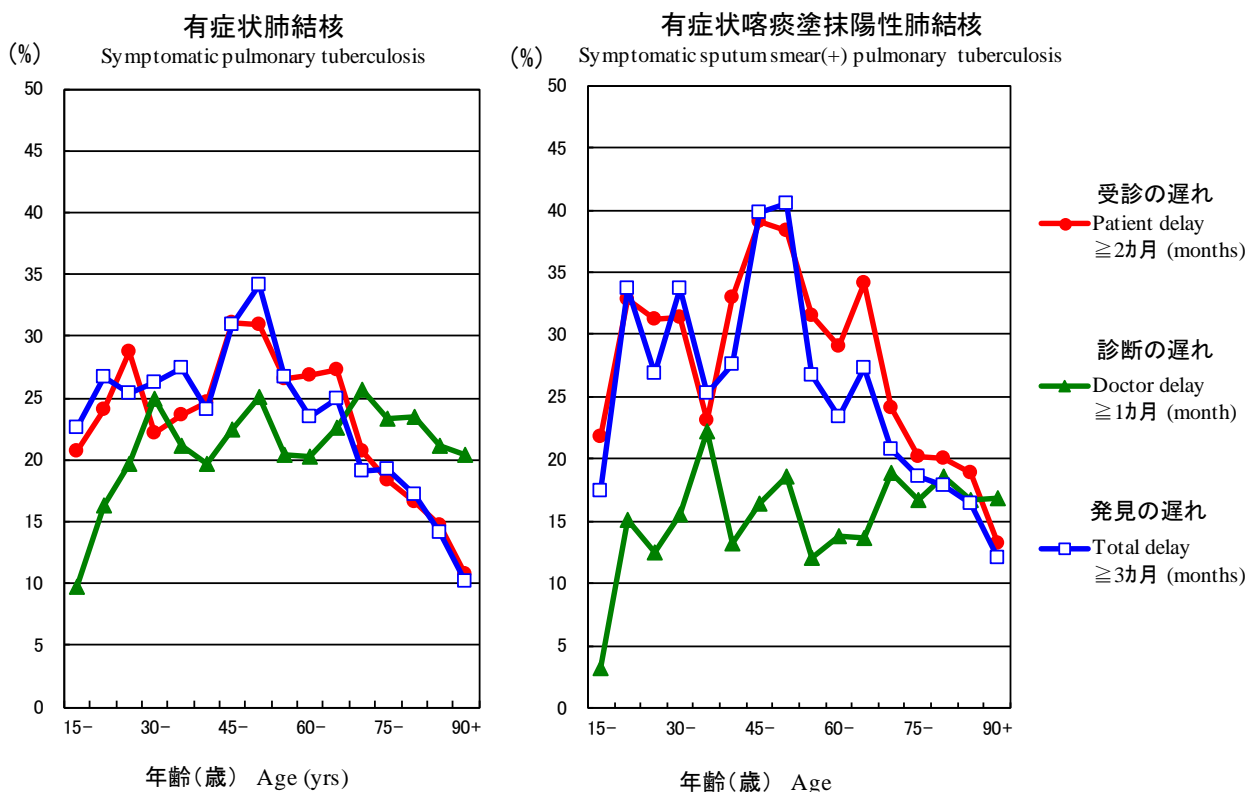


図2 新登録有症状肺結核中年齢5歳階層別発見の遅れの割合、2016年

Fig.2 Proportion of patient delay, doctor delay and total delay among symptomatic pulmonary tuberculosis patients by 5-year age group, in 2016

受診の遅れ:「発病の時期」(結核の症状が初めて自覚された時期)から「初診の時期」(結核による症状を訴えて初めて医療機関を受診した時期)までの期間が2ヵ月以上である場合。

Patient delay: time interval from the onset of symptoms to the first visit to a medical institution of 2 months or longer

診断の遅れ:「初診の時期」から「診断の時期」(結核と診断された時期)までの期間が1ヵ月以上である場合。

Doctor delay: time interval from the first visit to a medical institution to the diagnosis of tuberculosis of 1 month or longer

発見の遅れ:「発病の時期」から「診断の時期」までの期間が3ヵ月以上である場合。

Total delay: time interval from the onset of symptoms to the diagnosis of tuberculosis is 3 months or longer

旧表 新登録結核患者の発見方法、年齢階層別、2016年  
Previous table Proportion of mode of detection among newly notified TB patients by age group, 2016

年齢階層 Age groups	新登録患者 Newly notified TB patients	個別健診 Individual medical checkup	定期健診 Mass screening				接触者健診 Contact examination		医療機関 Medical institutions			その他 Others	不明 Unknown
			学校 Schools	住民 Residents	職場 Employees	施設 Facilities	家族 Family	その他 Others	有症状受診 Outpatients with TB symptoms (*1)	入院中 Inpatients with other diseases	通院中 Outpatients with other diseases		
全結核 All forms of TB													
総数 Total	17,625	1.8	1.4	2.0	6.0	0.6	1.2	2.3	57.2	14.0	11.2	0.8	0.6
0-14	59	0.0	3.4	0.0	0.0	0.0	27.1	11.9	47.5	0.0	3.4	6.8	0.0
15-19	190	1.1	34.7	0.5	3.2	0.0	6.8	12.6	33.7	0.0	1.6	0.0	1.1
20-24	630	3.0	18.3	0.3	16.5	0.0	1.9	9.5	42.9	1.0	0.6	0.6	0.5
25-29	605	1.5	8.1	0.0	20.2	0.3	2.5	7.3	52.6	1.2	2.5	0.3	0.7
30-34	516	1.7	1.7	0.4	23.8	0.2	2.3	3.3	58.3	2.3	2.9	0.2	0.4
35-39	488	2.9	1.0	1.0	21.5	0.4	1.8	6.4	53.9	4.3	4.9	0.8	0.4
40-44	572	3.8	0.7	3.3	19.6	0.5	2.6	4.2	54.2	3.5	5.1	1.2	0.5
45-49	656	2.1	0.0	0.5	19.4	0.8	3.0	6.1	53.4	4.6	7.5	1.4	0.8
50-54	602	3.3	0.0	1.0	18.6	0.7	1.2	2.3	56.8	5.1	9.5	0.2	0.7
55-59	693	2.2	0.0	1.3	13.0	0.4	1.7	3.9	58.2	5.8	10.2	0.9	1.0
60-64	872	2.3	0.0	2.2	9.2	0.5	1.9	2.9	57.1	8.7	12.0	1.5	0.8
65-69	1,341	2.5	0.0	4.3	4.2	0.7	1.5	1.9	57.3	11.4	12.5	1.9	1.0
70-74	1,406	2.0	0.0	4.4	0.9	0.4	0.8	1.6	54.6	15.6	16.9	1.1	0.4
75-79	2,001	1.5	0.0	3.2	0.2	0.2	0.5	0.6	59.0	16.6	16.2	0.7	0.5
80-84	2,579	1.5	0.0	2.1	0.1	0.4	0.4	0.6	57.9	20.7	15.0	0.6	0.3
85-89	2,559	1.1	0.0	1.5	0.0	0.8	0.3	0.4	61.2	20.9	12.4	0.5	0.5
90+	1,856	0.9	0.0	0.6	0.0	1.3	0.2	0.5	62.1	24.6	8.8	0.5	0.3
(再掲) 喀痰塗抹陽性肺結核 (Re-count) Sputum smear positive pulmonary TB													
総数 Total	6,642	1.4	0.5	1.8	3.6	0.6	0.4	0.7	63.8	15.3	10.3	0.5	0.6
0-14	3	0.0	33.3	0.0	0.0	0.0	33.3	0.0	33.3	0.0	0.0	0.0	0.0
15-19	47	0.0	29.8	0.0	6.4	0.0	2.1	6.4	55.3	0.0	0.0	0.0	0.0
20-24	134	2.2	9.7	0.0	16.4	0.0	2.2	5.2	59.7	0.0	0.0	0.7	0.0
25-29	148	0.7	4.7	0.0	11.5	0.0	0.7	0.7	72.3	1.4	3.4	0.7	2.0
30-34	142	1.4	0.0	0.0	19.7	0.7	0.7	0.7	69.0	3.5	1.4	0.7	0.0
35-39	140	2.1	0.0	0.7	13.6	0.0	0.0	0.7	72.9	4.3	5.0	0.0	0.7
40-44	177	2.8	0.6	1.1	16.4	1.1	0.6	1.7	67.2	3.4	4.0	0.6	0.6
45-49	209	2.9	0.0	0.5	12.9	1.4	1.4	1.9	66.5	4.3	6.7	0.0	0.5
50-54	213	1.4	0.0	0.9	11.7	0.5	0.5	0.9	72.3	4.2	6.6	0.5	0.5
55-59	240	1.3	0.0	0.8	7.9	0.4	0.8	2.5	70.4	4.2	8.8	0.0	1.3
60-64	350	1.1	0.0	1.7	7.1	0.3	1.1	1.1	66.3	8.9	10.3	0.6	1.1
65-69	502	1.6	0.0	4.2	3.8	0.6	0.6	1.2	63.5	11.8	9.4	1.6	1.0
70-74	501	1.0	0.0	3.0	1.0	0.8	0.2	0.0	63.3	14.6	14.2	0.2	0.6
75-79	751	0.9	0.0	3.3	0.1	0.3	0.1	0.4	61.1	18.4	14.0	0.8	0.3
80-84	1,074	1.2	0.0	2.0	0.0	0.5	0.2	0.4	59.6	21.3	14.0	0.3	0.4
85-89	1,141	1.6	0.0	1.1	0.0	0.4	0.2	0.2	64.3	20.2	10.9	0.4	0.5
90+	870	1.0	0.0	1.0	0.0	1.5	0.1	0.2	62.2	24.1	9.0	0.2	0.3

TB: tuberculosis

\*1 有症状: 咳・痰・血痰・喀血等の「呼吸器症状」や、喘鳴、胸痛、背部痛、息切れ、発熱、寝汗、全身倦怠、体重減少等の「その他の症状」を有する場合。

TB symptoms: Respiratory symptoms such as cough, sputum expectoration, bloody sputum, and hemoptysis; and other symptoms such as wheezing, chest pain, back pain, dyspnea, fever, night sweating, fatigue tendency, and weight loss.

旧表改訂 新登録結核患者数、職業・性・年齢階層別、2016年  
Previous table Number of newly notified TB patients by occupation, sex and age group, 2016

性/年齢	総数	接客業	看護師/保健師	医師	他医療従事者	教員/保育士	生徒/学生	他常用勤労者	他臨時/日雇	他自営/自由業	家事従事者	保育園児/幼稚園児/他の乳幼児	無職/他	不明
Sex/Age group	Total	Service workers	Nurses/Public health nurses	Medical doctors	Other medical workers	Teachers/Nursery nurses	Pupils/Students	Other regular workers	Other temporary/daily workers	Other self-employed	Housekeepers	Infants/Little children	Jobless/Others	Unknown
男 Male	10,594	233	16	35	66	23	382	1,851	424	524	8	15	6,731	286
0-14	31	-	-	-	-	-	15	-	-	-	-	15	1	-
15-19	108	1	-	-	-	-	86	10	7	-	-	-	4	-
20-24	384	14	2	-	3	-	186	113	22	5	-	-	35	4
25-29	322	24	1	3	6	3	73	153	26	6	-	-	24	3
30-39	544	44	5	1	22	7	16	306	32	32	-	-	63	16
40-49	738	42	5	6	9	4	3	405	59	47	-	-	136	22
50-59	886	42	3	4	10	6	0	423	66	68	-	-	225	39
60-69	1,580	39	-	8	12	2	2	343	146	149	2	-	799	78
70-79	2,238	24	-	4	4	-	1	80	58	133	2	-	1,862	70
80+	3,763	3	-	9	-	1	-	18	8	84	4	-	3,582	54
女 Female	7,031	176	175	5	165	39	255	547	210	99	284	11	4,914	151
0-14	28	-	-	-	-	-	16	-	-	-	-	11	1	-
15-19	82	2	-	-	1	-	65	7	1	-	-	-	5	1
20-24	246	15	10	-	8	-	113	64	10	-	4	-	17	5
25-29	283	23	11	-	19	6	45	95	18	5	6	-	48	7
30-39	460	40	48	2	30	9	14	132	40	4	49	-	82	10
40-49	490	33	42	2	54	11	2	103	51	15	45	-	106	26
50-59	409	26	41	1	34	11	-	77	45	13	34	-	116	11
60-69	633	18	18	-	16	1	-	55	38	14	59	-	385	29
70-79	1,169	12	4	-	3	1	-	13	7	26	60	-	1,018	25
80+	3,231	7	1	-	-	-	-	1	-	22	27	-	3,136	37

旧表 職業別、20～59歳新登録肺結核患者の発見方法別割合、2016年  
Previous table Proportion of mode of detection among newly notified pulmonary TB patients aged 20-59 years by occupation, 2016

	肺結核 Pulmonary TB patients	個別健診 Individual medical checkup	定期健診 Mass screening			接触者健診 Contact examination		医療機関 Clinics/Hospitals			その他/ 不明 Others/Unknown
			住民 Residents	職場 Employees	学校/施設 Schools/Facilities	家族 Family	その他 Others	有症状受診(*2) Outpatients with TB symptoms	入院中 Inpatients with other diseases	通院中 Outpatients with other diseases	
総数 Total	3,919	3.0	1.1	22.1	5.1	2.5	6.3	49.1	2.8	4.7	3.4
接客業 Service workers	264	4.2	1.9	22.0	0.0	2.7	5.7	57.6	1.1	3.4	1.5
医療関係者 Medical workers(*1)	321	2.2	0.0	37.1	0.0	2.2	14.0	40.5	0.9	2.8	0.3
教員・保育士 Teachers/Nursery nurses	45	8.9	0.0	37.8	0.0	0.0	6.7	40.0	2.2	4.4	0.0
学生 Students	406	3.2	0.0	1.0	43.1	1.7	12.6	28.1	0.2	0.2	9.9
他の常用勤労者 Other regular workers	1,571	2.6	0.8	36.4	0.1	2.0	5.3	45.3	1.6	3.9	2.0
他の臨時・日雇 Other temporary/daily workers	295	3.1	1.7	15.6	1.0	3.7	7.1	55.9	3.1	5.8	3.1
他の自営自由業 Other self-employed	151	0.7	4.0	6.0	0.0	2.0	1.3	66.2	4.0	12.6	3.3
家事 Housekeepers	103	7.8	1.9	2.9	1.0	4.9	1.9	66.0	2.9	9.7	1.0
無職 Jobless/Others	648	2.6	1.9	4.0	2.6	4.0	3.2	61.1	8.2	8.0	4.3
不明 Unknown	115	4.3	0.0	9.6	0.9	0.9	2.6	60.0	4.3	5.2	12.2

\*1 医療関係者：看護師・保健師・助産師、医師、その他医療職含む。

Medical workers include nurses, public health nurses, medical doctors and dentists, physical therapists, occupational therapists, medical technologists, radiographers, and co-medicals.

\*2 有症状：咳・痰・血痰・喀血等の「呼吸器症状」や、喘鳴、胸痛、背部痛、息切れ、発熱、寝汗、全身倦怠、体重減少等の「その他の症状」を有する場  
TB symptoms: Respiratory symptoms such as cough, sputum expectoration, bloody sputum, and hemoptysis; and other symptoms such as wheezing, chest pain, back pain, dyspnea, fever, night sweating, fatigue tendency, and weight loss.

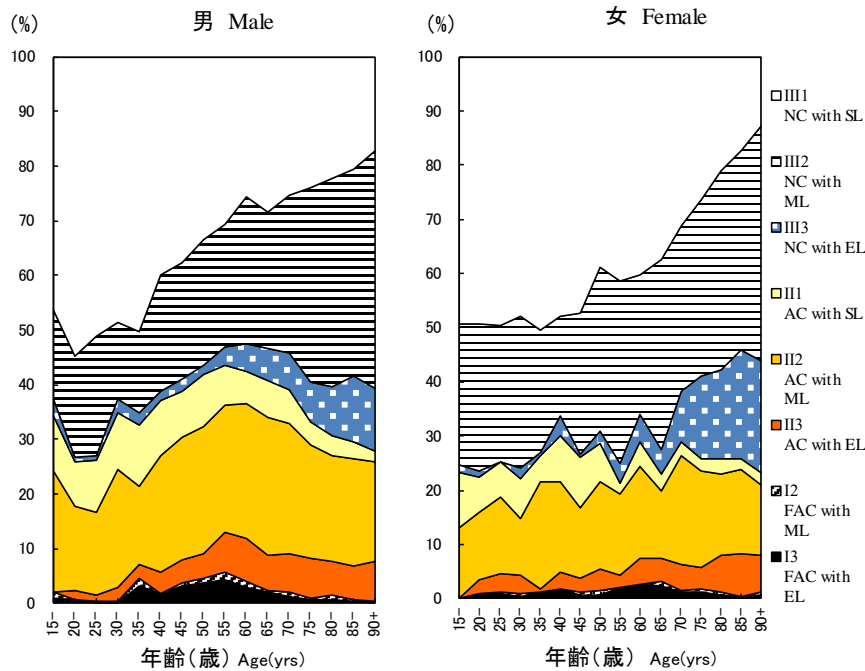


図3 新登録肺結核患者中胸部X線写真学会分類別所見割合、性・年齢5歳階級別、2016年  
 Fig.3 Proportion of cases classified by X-ray classification by sex and 5-yearage group, 2016  
 NC : Non-cavitory SL : Slight lesion AC : Advanced cavitory ML : Moderate lesion  
 FAC: Far-advance cavitory EL : Extensive lesion

表2 新登録結核患者中「HIV合併あり」と報告された患者数、性・年齢階層別、2016年および2007～2016年  
 Table 2 Number of newly notified tuberculosis patients with HIV infection, by sex and age group, 2016 and 2007-2016

年齢階層 Age group	喀痰塗抹陽性 Sputum smear positive		他結核菌陽性 Other bacteriologically-positive		菌陰性結核 Bacteriologically-negative		肺外結核 Extra-pulmonary		総数 Total	
	男 M	女 F	男 M	女 F	男 M	女 F	男 M	女 F	男 M	女 F
2015年 2015 Calendar year										
総計 Total	10 (1)	5 (2)	5 (2)	1	1 (1)	2 (2)	20 (4)	0	36 (8)	8 (4)
0-19	0	0	0	0	0	0	0	0	0	0
20-24	0	0	1 (1)	0	0	0	0	0	1 (1)	0
25-29	1 (1)	1 (1)	0	0	0	2 (2)	2 (1)	0	3 (2)	3 (3)
30-34	1	0	1	0	0	0	1	0	3	0
35-39	1	0	1 (1)	0	0	0	7 (1)	0	9 (2)	0
40-44	0	1 (1)	1	0	1 (1)	0	2 (1)	0	4 (2)	1 (1)
45-49	1	0	0	0	0	0	2 (1)	0	3 (1)	0
50-54	0	0	0	0	0	0	3	0	3	0
55-59	1	0	0	0	0	0	0	0	1	0
60-64	2	0	1	0	0	0	0	0	3	0
65-69	0	0	0	0	0	0	2	0	2	0
70-74	2	0	0	1	0	0	1	0	3	1
75-79	0	0	0	0	0	0	0	0	0	0
80+	1	3	0	0	0	0	0	0	1	3
2007～2016年 2007-2016 Calendar year										
総計 Total	159 (16)	30 (16)	85 (20)	12 (8)	39 (5)	9 (7)	187 (34)	24 (12)	470 (75)	75 (43)
0-19	1 (1)	0	0	0	0	0	2	0	3 (1)	0
20-24	5 (3)	0	4 (3)	0	1 (1)	1 (1)	1	1	11 (7)	2 (1)
25-29	10 (5)	5 (4)	1 (1)	1 (1)	1 (1)	2 (2)	11 (2)	1 (1)	23 (9)	9 (8)
30-34	13 (3)	4 (4)	11 (1)	3 (2)	2	1 (1)	22 (7)	4 (2)	48 (11)	12 (9)
35-39	23 (2)	3 (3)	18 (5)	3 (3)	6	2 (2)	34 (7)	4 (3)	81 (14)	12 (11)
40-44	26 (1)	5 (4)	16 (5)	0	8 (2)	3 (1)	43 (13)	5 (4)	93 (21)	13 (9)
45-49	16 (1)	1 (1)	9 (3)	1 (1)	4 (1)	0	32 (5)	2	61 (10)	4 (2)
50-54	12	0	11 (2)	0	5	0	11	0	39 (2)	0
55-59	9	0	3	0	4	0	9	2 (2)	25	2 (2)
60-64	15	1	6	1 (1)	3	0	7	0	31	2 (1)
65-69	10	0	3	0	3	0	8	1	24	1
70-74	4	2	1	1	1	0	3	1	9	4
75-79	5	0	0	0	1	0	3	2	9	2
80+	10	9	2	2	0	0	1	1	13	12

( ) : 外国人患者の再掲 Re-count of foreigners  
 HIV : Human Immunodeficiency Virus. M : male patients, F : female patients.

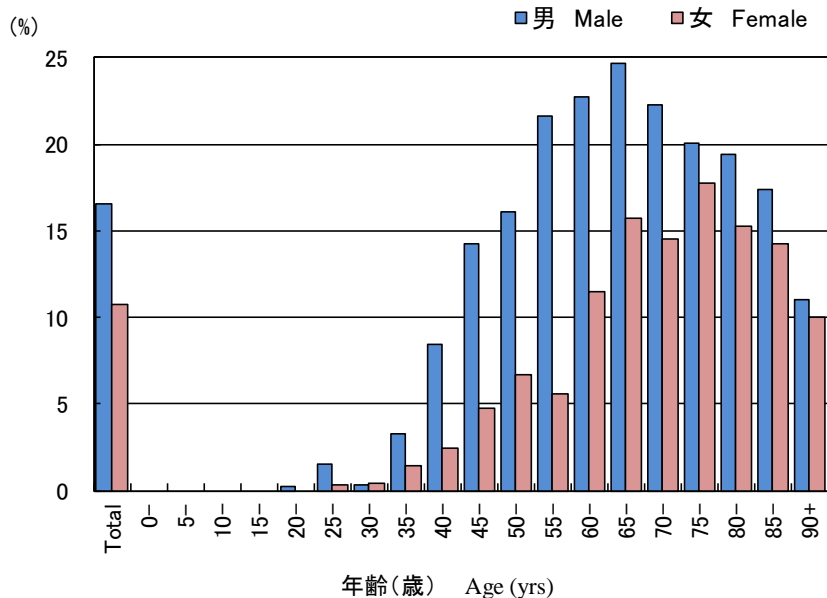


図4 新登録結核患者中「糖尿病合併あり」と報告された患者の割合、性・年齢階層別、2016年  
 Fig.4 Proportion of newly notified tuberculosis patients with diabetes mellitus in each age-group by sex, 2016

表3 新登録肺結核患者から分離培養された結核菌の抗結核薬剤感受性検査結果、治療歴別、2012~2016年  
 Table 3 Drug susceptibility test results among newly notified pulmonary tuberculosis patients, by treatment history, 2012-2016

治療歴、菌検査状況、耐性状況 Treatment history, Culture examination results, Drug susceptibility test results	2012				2013				2014				2015				2016				
	n	%	%	%	n	%	%	%	n	%	%	%	n	%	%	%	n	%	%	%	
<b>総数 Total</b>																					
肺結核 Pulmonary tuberculosis	16,432	100%			15,972	100%			15,149	100%			14,123	100%			13,608	100%			
培養結果把握 Culture result obtained	14,058	85.6			13,311	83.3			12,909	85.2			12,260	86.8			12,255	90.1			
培養陽性 Culture positive	11,261	68.5	100%		10,523	65.9	100%		10,259	67.7	100%		10,035	71.1	100%		9,878	72.6	100%		
感受性結果把握 DST result obtained	8,347		74.1	100%	7,701		73.2	100%	7,645		74.5	100%	7,630		76.0	100%	7,732		78.3	100%	
多剤耐性 MDR	60			0.7	47			0.6	56			0.7	48			0.6	49			0.6	
INH 耐性 Any INH resistance	380			4.6	369			4.8	349			4.6	372			4.9	369			4.8	
RFP耐性 Any RFP resistance	73			0.9	64			0.8	76			1.0	77			1.0	74			1.0	
1剤以上耐性 Any resistance*	810			9.7	757			9.8	749			9.8	767			10.1	741			9.6	
<b>初回治療 New treatment</b>																					
肺結核 Pulmonary tuberculosis	15,040	100%			14,727	100%			13,956	100%			13,102	100%			12,686	100%			
培養結果把握 Culture result obtained	12,882	85.7			12,279	83.4			11,897	85.2			11,394	87.0			11,435	90.1			
培養陽性 Culture positive	10,379	69.0	100%		9,782	66.4	100%		9,523	68.2	100%		9,379	71.6	100%		9,284	73.2	100%		
感受性結果把握 DST result obtained	7,676		74.0	100%	7,166		73.3	100%	7,104		74.6	100%	7,135		76.1	100%	7,278		78.4	100%	
多剤耐性 MDR	38			0.5	31			0.4	40			0.6	33			0.5	37			0.5	
INH 耐性 Any INH resistance	310			4.0	326			4.5	288			4.1	317			4.4	316			4.3	
RFP耐性 Any RFP resistance	46			0.6	42			0.6	58			0.8	58			0.8	56			0.8	
1剤以上耐性 Any resistance*	712			9.3	680			9.5	664			9.3	686			9.6	659			9.1	
<b>再治療 Re-treatment</b>																					
肺結核 Pulmonary tuberculosis	1,094	100%			1,013	100%			968	100%			851	100%			735	100%			
培養結果把握 Culture result obtained	959	87.7			852	84.1			848	87.6			732	86.0			665	90.5			
培養陽性 Culture positive	693	63.3	100%		586	57.8	100%		591	61.1	100%		534	62.7	100%		462	62.9	100%		
感受性結果把握 DST result obtained	555		80.1	100%	435		74.2	100%	449		76.0	100%	412		77.2	100%	358		77.5	100%	
多剤耐性 MDR	22			4.0	16			3.7	15			3.3	14			3.4	12			3.4	
INH 耐性 Any INH resistance	67			12.1	35			8.0	57			12.7	49			11.9	51			14.2	
RFP耐性 Any RFP resistance	26			4.7	22			5.1	17			3.8	18			4.4	16			4.5	
1剤以上耐性 Any resistance*	94			16.9	65			14.9	79			17.6	72			17.5	70			19.6	
<b>治療歴不明 No information about treatment history</b>																					
肺結核 Pulmonary tuberculosis	298	100%			232	100%			225	100%			170	100%			187	100%			
培養結果把握 Culture result obtained	217	72.8			180	77.6			164	72.9			134	78.8			155	82.9			
培養陽性 Culture positive	189	63.4	100%		155	66.8	100%		145	64.4	100%		122	71.8	100%		132	70.6	100%		
感受性結果把握 DST result obtained	116		61.4	100%	100		64.5	100%	92		63.4	100%	83		68.0	100%	96		72.7	100%	
多剤耐性 MDR	0			0.0	0			0.0	1			1.1	1			1.2	0			0.0	
INH 耐性 Any INH resistance	3			2.6	8			8.0	4			4.3	6			7.2	2			2.1	
RFP耐性 Any RFP resistance	1			0.9	0			0.0	1			1.1	1			1.2	2			2.1	
1剤以上耐性 Any resistance*	4			3.4	12			12.0	6			6.5	9			10.8	12			12.5	

DST: Drug susceptibility test MDR: Multi-drug resistant, i.e., resistant to at least INH and RFP INH: isoniazid RFP: rifampicin

感受性結果は重複あり Cases having drug resistance are counted independently by drug.

\*: INH, RFP, SM EBの4剤のうちのいずれかに耐性 resistant to either INH, RFP, SM, or EB

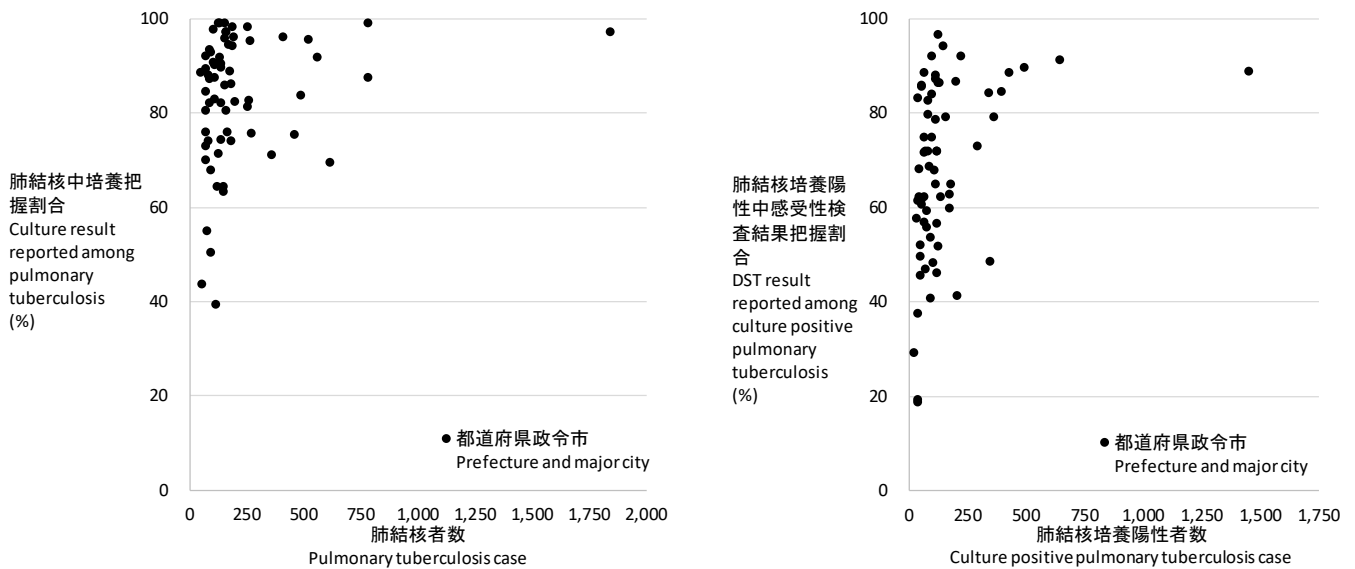
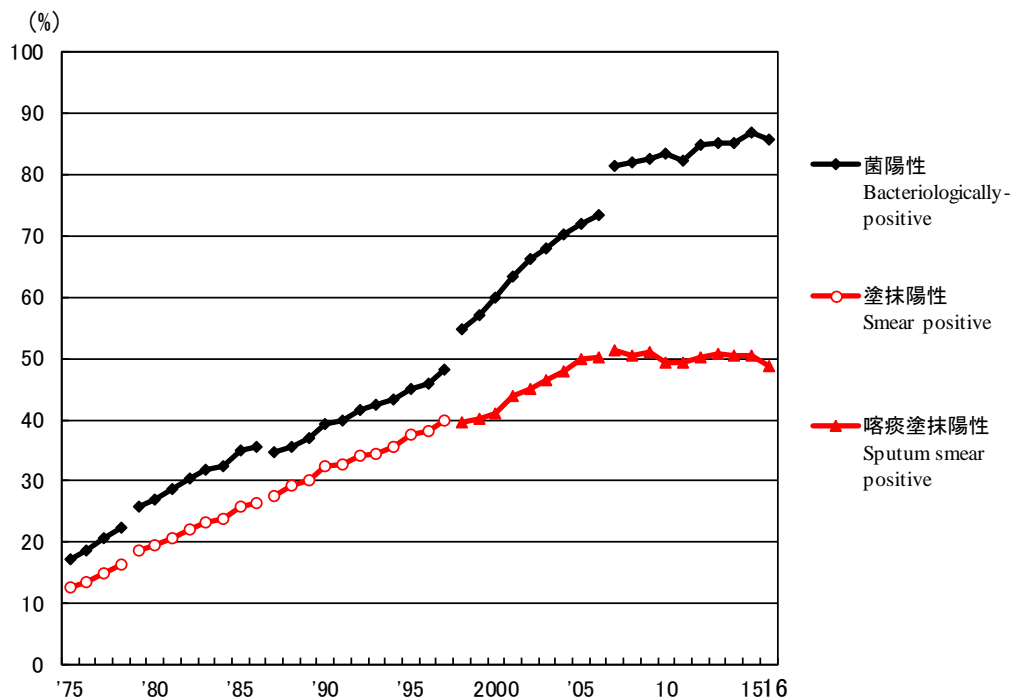


図5 新登録肺結核患者数とその内培養把握割合の散布図(左)、及び新登録肺結核培養陽性者数とその内感受性検査結果把握割合の散布図(右)、都道府県政令指定都市別、2016年

Fig. 5 Scatter plot of culture results reported among pulmonary tuberculosis patients and anti-tuberculosis drug susceptibility test results among newly notified pulmonary tuberculosis patients, by prefecture and major city, 2016



旧 図 新登録肺結核患者中菌陽性割合の推移、1975～2016年

Previous Fig.

Proportion of bacteriologically confirmed cases among newly notified pulmonary tuberculosis patients, 1975-2016

資料と対象 Sources of information and subjects:

結核登録者の定期報告 Annual tuberculosis reports from public health centers

1975-1978: 全結核 All forms of tuberculosis

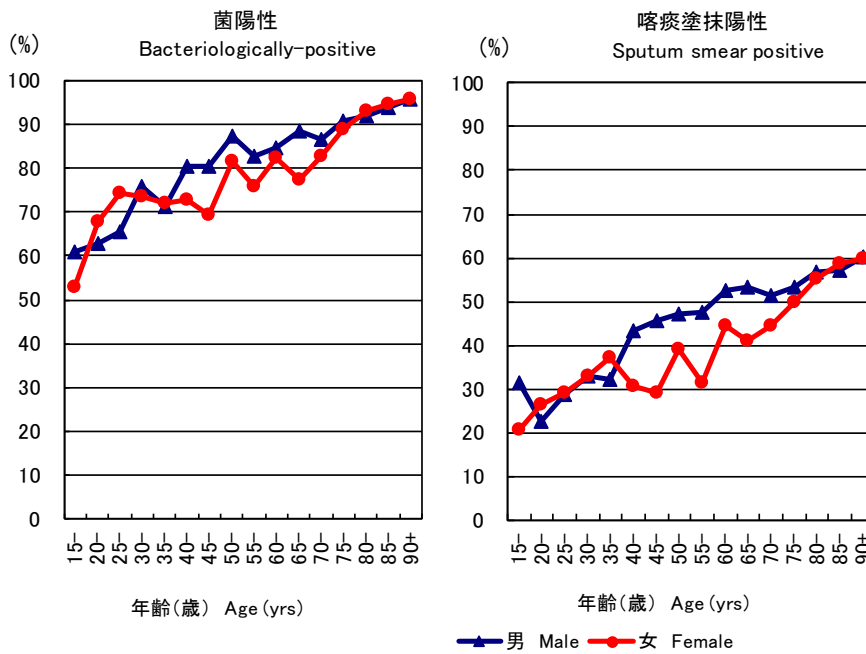
1979-1986: 肺結核 Pulmonary tuberculosis

電算化結核サーベイランスシステム Nationwide computerized tuberculosis surveillance system

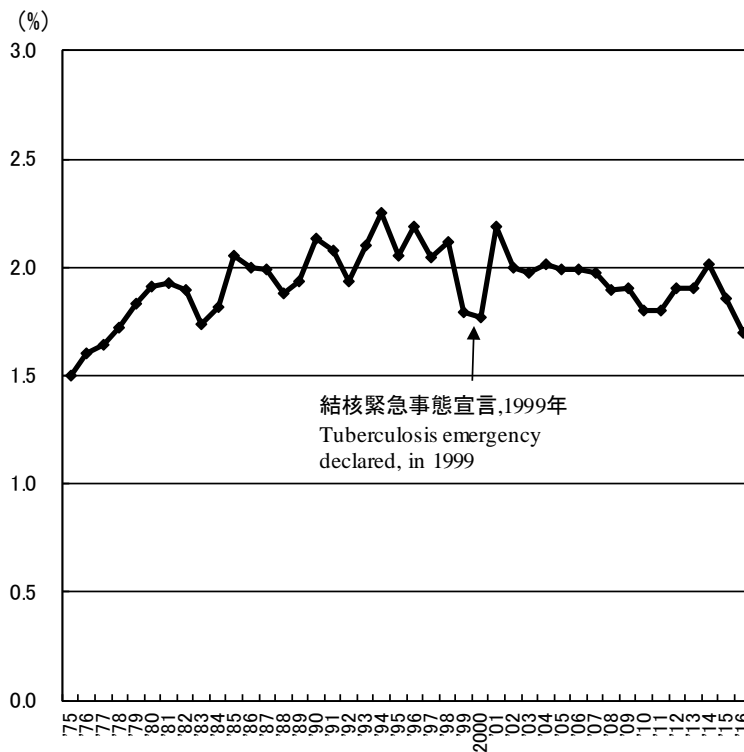
1987-1997: 肺結核 Pulmonary Tuberculosis

1998-2006: 肺結核(活動性分類の変更) Pulmonary tuberculosis (New patient criteria for notification were applied)

2007-2009: 肺結核(核酸増幅法項目の追加) Pulmonary tuberculosis (Item of nucleic acid amplification was added)



旧図 新登録肺結核患者中菌陽性割合、性・年齢5歳階級別、2016年  
 Previous Fig. Proportion of bacteriologically confirmed cases among newly notified pulmonary tuberculosis patients by sex and 5-year age group, 2016



旧図 新登録肺結核患者中胸部X線写真での広汎空洞型割合の推移、1975～2016年  
 Previous Fig. Proportion of far-advanced cavitory cases among newly notified pulmonary Tuberculosis patients, 1975-2016



旧表 性・職業別、30～59歳新登録肺結核患者中有空洞あるいは／かつ喀痰塗抹陽性の割合、2016年  
 Previous table Proportion of cavitory or/and sputum smear positive cases among newly notified pulmonary TB patients aged 30-59 years, 2016

	男 Male							女 Female						
	肺結核 Pulmonary TB	有空洞あるいは 喀痰塗抹陽性			有空洞かつ 喀痰塗抹陽性			肺結核 Pulmonary TB	有空洞あるいは 喀痰塗抹陽性			有空洞かつ 喀痰塗抹陽性		
		Cavitory or sputum smear(+)			Cavitory and sputum smear(+)				Cavitory or sputum smear(+)			Cavitory and sputum smear(+)		
		n	%	Ratio	n	%	Ratio		n	%	Ratio	n	%	Ratio
接客業 Service workers	114	67	58.8	1.9	36	31.6	2.7	84	41	48.8	1.4	15	17.9	1.6
医療職 Medical workers	51	16	31.4	1.0	6	11.8	1.0	211	72	34.1	1.0	24	11.4	1.0
教員・保育士 Teachers/ Nursery nurses	15	6	40.0	1.3	1	6.7	0.6	21	13	61.9	1.8	6	28.6	2.5
他の常用勤労者 Other regular workers	971	462	47.6	1.5	212	21.8	1.9	242	95	39.3	1.2	25	10.3	0.9
他の臨時・日雇 Other temporary/ daily workers	135	87	64.4	2.1	45	33.3	2.8	97	44	45.4	1.3	22	22.7	2.0
他の自営自由 Other self- employed	118	76	64.4	2.1	44	37.3	3.2	23	10	43.5	1.3	3	13.0	1.1
無職 Jobless	308	208	67.5	2.2	107	34.7	3.0	186	92	49.5	1.4	41	22.0	1.9
その他 Others	115	65	56.5	1.8	24	20.9	1.8	166	68	41.0	1.2	22	13.3	1.2
総数 Total	1,827	987	54.0		475	26.0		1,030	435	42.2		158	15.3	

その他: 家事、学生、不明 Others: Houskeepers/ Students/ Unknown  
 Ratio: 医療職の割合に対するその他職業の割合の比 The ratio of each proportion to that of medical workers

旧表 新登録肺結核患者の薬剤感受性検査結果、性・年齢別、2016年および2007～2016年  
 Previous table Drug susceptibility test results among newly notified pulmonary tuberculosis patients, by sex and age group, 2016 and 2007-2016

年齢 Age group	総数 Total										初回治療(再掲) New treatment (Re-count)										
	男 Male					女 Female					男 Male					女 Female					
	感受性結 果把握	多剤耐 性	INH耐 性	RFP耐 性	1剤以 上耐性*	感受性結 果把握	多剤耐 性	INH耐 性	RFP耐 性	1剤以 上耐性*	感受性結 果把握	多剤耐 性	INH耐 性	RFP耐 性	1剤以 上耐性*	感受性結 果把握	多剤耐 性	INH耐 性	RFP耐 性	1剤以 上耐性*	
	DST result obtained	MDR	Any INH resista nce	Any RFP resista nce	Any resista nce	DST result obtained	MDR	Any INH resista nce	Any RFP resista nce	Any resista nce	DST result obtained	MDR	Any INH resista nce	Any RFP resista nce	Any resista nce	DST result obtained	MDR	Any INH resista nce	Any RFP resista nce	Any resista nce	
2016年 2016 Calendar year	総数 Total	4,914	31	247	44	511	2,818	18	122	30	230	4,579	23	213	32	456	2,699	14	103	24	203
0-19	54	1	8	1	10	35	0	5	0	8	53	1	8	1	10	31	0	5	0	7	
20-29	266	4	23	5	47	225	5	16	9	33	258	3	22	4	45	218	4	14	7	30	
30-39	238	2	18	2	36	195	4	16	4	24	228	2	18	2	35	189	3	15	3	23	
40-49	357	2	14	4	43	179	1	10	3	19	331	2	13	4	39	174	1	9	3	18	
50-59	437	3	23	4	52	137	1	6	1	11	417	3	21	3	48	128	1	5	1	10	
60-69	779	6	42	10	86	196	0	6	1	20	735	5	35	8	75	188	0	5	1	18	
70-79	1,002	7	65	9	124	421	0	19	1	33	932	2	51	3	107	405	0	16	0	29	
80+	1,781	6	54	9	113	1,430	7	44	11	82	1,625	5	45	7	97	1,366	5	34	9	68	
2007～2016年 2007-2016 Calendar year	総数 Total	46,604	353	2,361	501	5,486	24,302	189	1,077	260	2,444	42,241	223	1,921	326	4,757	22,810	117	879	172	2,146
0-19	341	7	32	7	63	301	2	26	3	61	326	5	30	5	61	285	2	24	3	56	
20-29	2,346	48	173	60	404	1,998	51	157	68	333	2,246	36	152	46	377	1,910	37	138	50	305	
30-39	2,843	19	185	30	431	2,145	28	141	39	305	2,690	15	174	26	406	2,057	22	126	29	279	
40-49	3,727	32	200	47	515	1,795	18	91	27	231	3,492	22	177	32	463	1,704	10	79	18	211	
50-59	5,299	49	294	78	764	1,496	19	69	26	167	4,909	30	253	49	684	1,413	8	52	14	146	
60-69	8,225	57	444	96	1,097	2,204	12	106	17	266	7,513	38	367	62	950	2,071	6	83	10	230	
70-79	10,206	81	531	105	1,215	4,403	24	183	32	437	9,091	41	394	57	1,010	4,056	10	146	15	378	
80+	13,617	60	502	78	997	9,960	35	304	48	644	11,974	36	374	49	806	9,314	22	231	33	541	
2007～2016年 2007-2016 Calendar year	総数 Total	100%	0.8	5.1	1.1	11.8	100%	0.8	4.4	1.1	10.1	100%	0.5	4.5	0.8	11.3	100%	0.5	3.9	0.8	9.4
0-19	100	2.1	9.4	2.1	18.5	100	0.7	8.6	1.0	20.3	100	1.5	9.2	1.5	18.7	100	0.7	8.4	1.1	19.6	
20-29	100	2.0	7.4	2.6	17.2	100	2.6	7.9	3.4	16.7	100	1.6	6.8	2.0	16.8	100	1.9	7.2	2.6	16.0	
30-39	100	0.7	6.5	1.1	15.2	100	1.3	6.6	1.8	14.2	100	0.6	6.5	1.0	15.1	100	1.1	6.1	1.4	13.6	
40-49	100	0.9	5.4	1.3	13.8	100	1.0	5.1	1.5	12.9	100	0.6	5.1	0.9	13.3	100	0.6	4.6	1.1	12.4	
50-59	100	0.9	5.5	1.5	14.4	100	1.3	4.6	1.7	11.2	100	0.6	5.2	1.0	13.9	100	0.6	3.7	1.0	10.3	
60-69	100	0.7	5.4	1.2	13.3	100	0.5	4.8	0.8	12.1	100	0.5	4.9	0.8	12.6	100	0.3	4.0	0.5	11.1	
70-79	100	0.8	5.2	1.0	11.9	100	0.5	4.2	0.7	9.9	100	0.5	4.3	0.6	11.1	100	0.2	3.6	0.4	9.3	
80+	100	0.4	3.7	0.6	7.3	100	0.4	3.1	0.5	6.5	100	0.3	3.1	0.4	6.7	100	0.2	2.5	0.4	5.8	

DST: Drug susceptibility test. MDR: Multi-drug resistance, i.e., resistant to at least INH and RFP. INH: Isoniazid. RFP: Rifampicin.

\*: 2012年以降はINH, RFP, SM EBの4剤のうちのいずれかに耐性

旧表 新登録肺結核患者の薬剤感受性検査結果および耐性率、性・年齢別、2007～2016年（再掲；外国人）

Previous table Drug susceptibility test results among newly notified pulmonary tuberculosis patients, by sex and age group, 2007-2016 (Re-count of foreigners)

年齢 Age group	総数 Total										初回治療(再掲) New treatment (Re-count)											
	男 Male					女 Female					男 Male					女 Female						
	感受性結果 把握 DST result obtained	多剤耐 性 MDR	INH耐 性 Any INH resista nce	RFP耐 性 Any RFP resista nce	1剤以 上耐性 * Any resista nce	感受性結果 把握 DST result obtained	多剤耐 性 MDR	INH耐 性 Any INH resista nce	RFP耐 性 Any RFP resista nce	1剤以 上耐性 * Any resista nce	感受性結果 把握 DST result obtained	多剤耐 性 MDR	INH耐 性 Any INH resista nce	RFP耐 性 Any RFP resista nce	1剤以 上耐性 * Any resista nce	感受性結果 把握 DST result obtained	多剤耐 性 MDR	INH耐 性 Any INH resista nce	RFP耐 性 Any RFP resista nce	1剤以 上耐性 * Any resista nce		
2007～2016年	2007-2016 Calendar year																					
総数 Total	1447	57	162	65	267	0	1577	73	202	93	318	1374	37	135	46	239	0	1494	54	176	69	282
0-19	87	6	21	6	29	0	57	1	9	2	11	84	4	19	4	27	0	55	1	8	2	10
20-29	729	39	88	45	142	0	704	44	103	57	168	701	28	72	34	128	0	677	33	89	43	150
30-39	252	6	21	7	39	0	397	17	57	19	78	241	5	20	6	37	0	373	13	52	14	71
40-49	124	4	13	5	25	0	224	4	18	6	35	113	0	8	0	18	0	208	1	15	2	30
50-59	82	0	3	0	7	0	85	4	9	5	13	78	0	3	0	7	0	79	4	7	5	10
60-69	72	2	10	2	16	0	45	1	3	2	5	65	2	8	2	14	0	44	1	3	2	5
70-79	53	0	4	0	5	0	27	2	3	2	4	49	0	4	0	5	0	21	1	2	1	2
80+	48	0	2	0	4	0	38	0	0	0	4	43	0	1	0	3	0	37	0	0	0	4
2007～2016年	2007-2016 Calendar year																					
総数 Total	100%	3.9	11.2	4.5	18.5		100%	4.6	12.8	5.9	20.2	100%	2.7	9.8	3.3	17.4		100%	3.6	11.8	4.6	18.9
0-19	100	6.9	24.1	6.9	33.3		100	1.8	15.8	3.5	19.3	100	4.8	22.6	4.8	32.1		100	1.8	14.5	3.6	18.2
20-29	100	5.3	12.1	6.2	19.5		100	6.3	14.6	8.1	23.9	100	4.0	10.3	4.9	18.3		100	4.9	13.1	6.4	22.2
30-39	100	2.4	8.3	2.8	15.5		100	4.3	14.4	4.8	19.6	100	2.1	8.3	2.5	15.4		100	3.5	13.9	3.8	19.0
40-49	100	3.2	10.5	4.0	20.2		100	1.8	8.0	2.7	15.6	100	0.0	7.1	0.0	15.9		100	0.5	7.2	1.0	14.4
50-59	100	0.0	3.7	0.0	8.5		100	4.7	10.6	5.9	15.3	100	0.0	3.8	0.0	9.0		100	5.1	8.9	6.3	12.7
60-69	100	2.8	13.9	2.8	22.2		100	2.2	6.7	4.4	11.1	100	3.1	12.3	3.1	21.5		100	2.3	6.8	4.5	11.4
70-79	100	0.0	7.5	0.0	9.4		100	7.4	11.1	7.4	14.8	100	0.0	8.2	0.0	10.2		100	4.8	9.5	4.8	9.5
80+	100	0.0	4.2	0.0	8.3		100	0.0	0.0	0.0	10.5	100	0.0	2.3	0.0	7.0		100	0.0	0.0	0.0	10.8

DST: Drug susceptibility test. MDR: Multi-drug resistance, i.e., resistant to at least INH and RFP. INH: Isoniazid. RFP: Rifampicin.

\*: 2012年はINH, RFP, SM EBの4剤のうちのいずれかに耐性