

【治療 1】

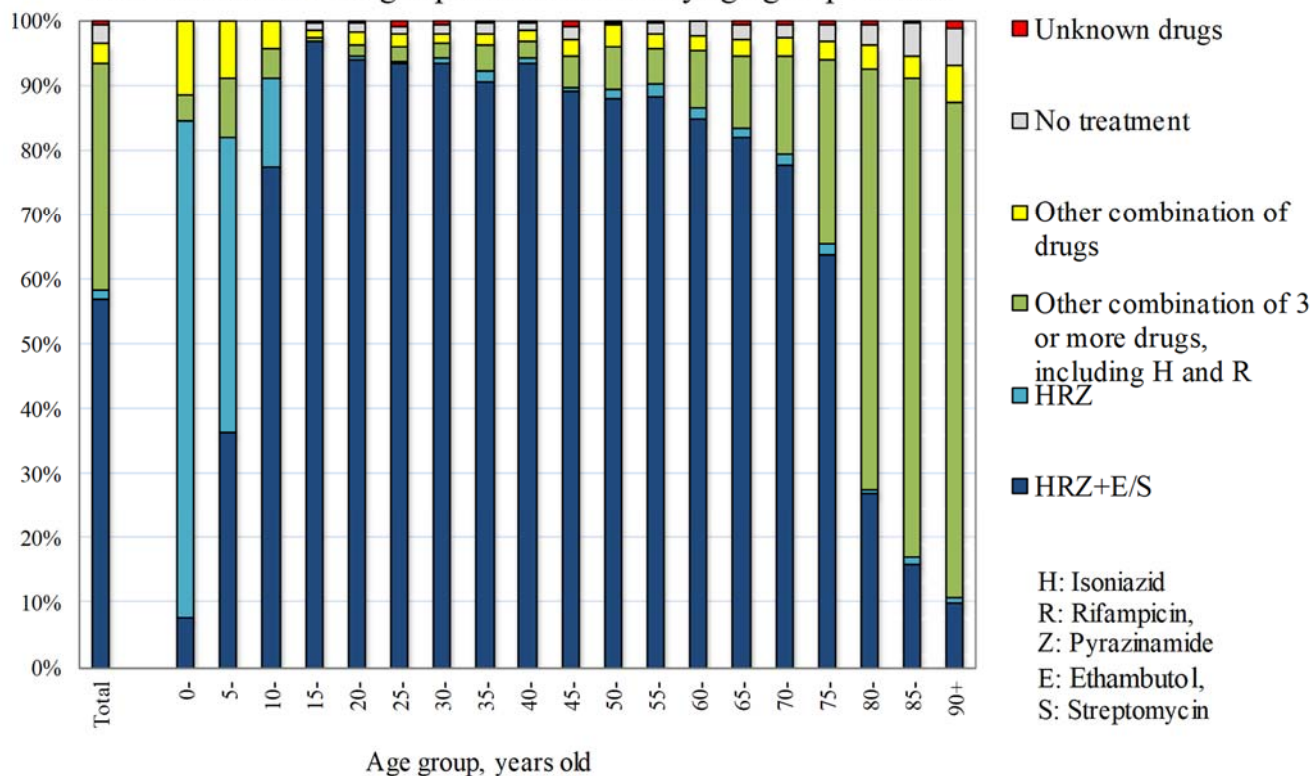
Table 1 再治療患者の年齢階層別・前回治療開始年別患者数、2016

Number of patients with TB on re-treatment, by year when previous TB treatment was initiated and age group, 2016

Year when previous TB treatment initiated	Total	Age group (years)								Previous TB treatment regimen unknown (re-count)
		0-19	20-29	30-39	40-49	50-59	60-69	70-79	80+	
Total	908	12	47	44	67	82	126	186	344	275
~1949	61	0	0	0	0	0	0	6	55	48
1950-59	123	0	0	0	0	0	5	20	98	83
1960-69	50	0	0	0	0	1	2	29	18	30
1970-79	30	0	0	0	1	1	10	6	12	19
1980-89	29	0	0	0	2	7	6	8	6	20
1990-99	48	0	1	3	7	7	7	10	13	26
2000-09	137	5	6	11	19	15	26	24	31	26
2010-15	430	7	40	30	38	51	70	83	111	23
2005-2015 (re-count)										
2005	11	0	0	1	1	1	3	2	3	2
2006	17	1	2	0	1	2	5	2	4	5
2007	18	0	0	2	4	3	1	4	4	1
2008	27	1	2	3	3	5	3	5	5	3
2009	28	2	1	2	4	3	6	3	7	6
2010	28	0	2	1	3	3	5	4	10	4
2011	32	1	4	3	3	6	2	6	7	3
2012	45	2	1	1	7	5	9	6	14	2
2013	76	0	7	7	8	7	6	18	23	4
2014	94	0	4	7	9	12	16	22	24	4
2015	113	2	17	8	4	12	24	20	26	4
2016	42	2	5	3	4	6	8	7	7	2

TB: tuberculosis

Fig.1 新登録結核患者の年齢階層別治療開始時化学療法内容、2016  
Anti-tuberculosis drugs upon notification by age group in 2016



旧表 再治療者の年齢階層別前回治療内容別患者数、2016年

Previous table Number of retreatment tuberculosis patients by previous tuberculosis treatment regimen and age group, 2016

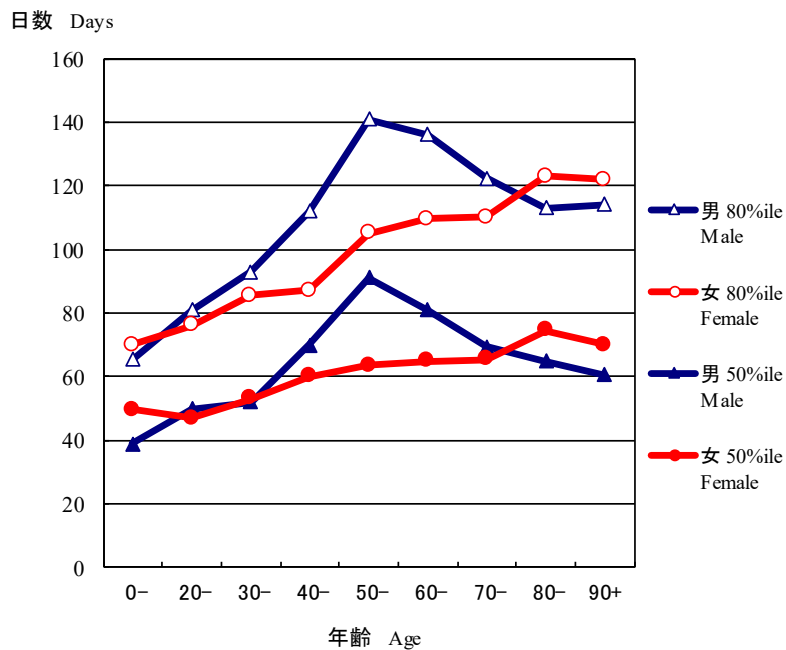
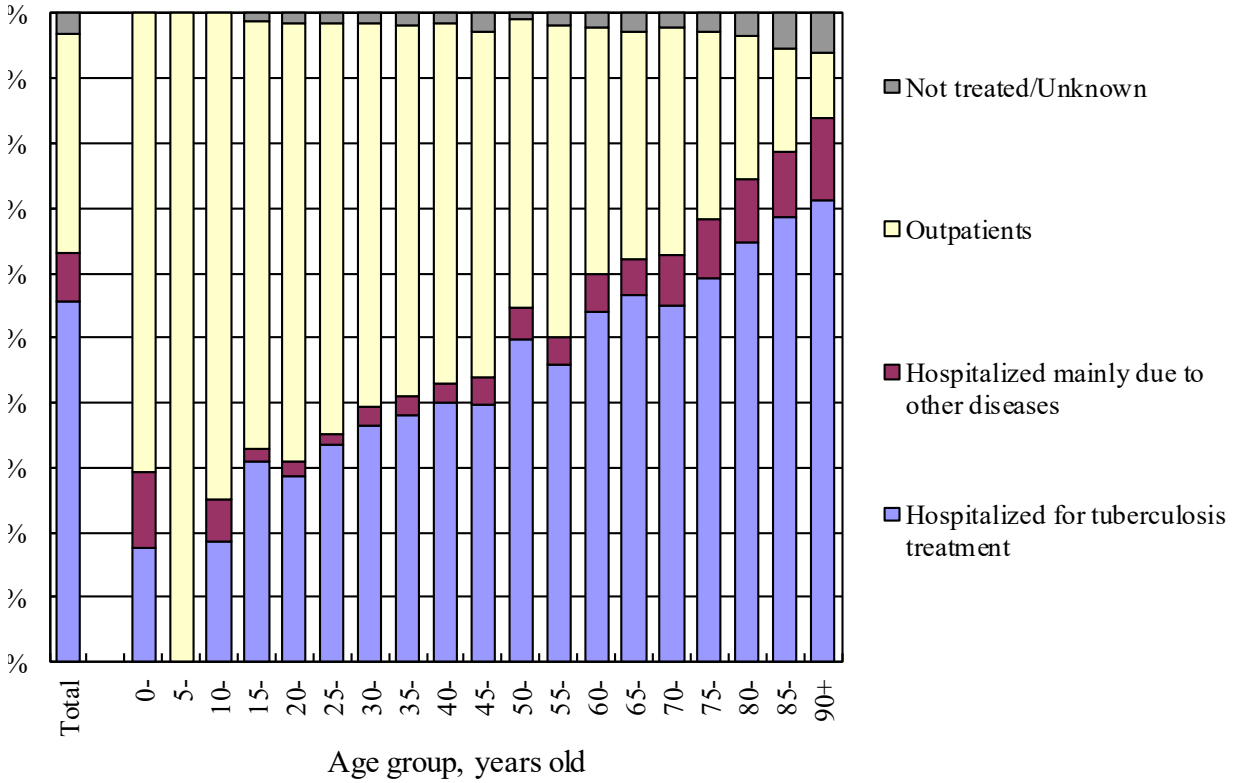
年齢 Age group	再治療者 Retreatment	前回治療内容 Previous treatment regimen				
		HRZ含む治療 Regimen with HRZ	他HR含む治療 Other regimen with HR	その他治療 Other regimen	潜在性結核治療 LTBI treatment	不明 Unknown
総数 Total	908	271	167	95	100	275
0-4	0	0	0	0	0	0
5-9	1	0	0	0	1	0
10-14	1	0	0	0	1	0
15-19	10	2	0	0	8	0
20-24	21	8	1	0	9	3
25-29	26	12	3	0	5	6
30-34	27	15	0	0	6	6
35-39	17	12	0	0	4	1
40-44	29	11	5	0	7	6
45-49	38	17	8	0	8	5
50-54	32	16	4	2	4	6
55-59	50	25	4	1	12	8
60-64	52	23	7	2	9	11
65-69	74	31	15	6	10	12
70-74	80	37	9	10	6	18
75-79	106	31	12	22	3	38
80-84	133	23	39	19	3	49
85-89	123	3	30	28	2	60
90+	88	5	30	5	2	46

H : Isoniazid, R : Rifampicin, Z : Pyrazinamide

LTBI : Latent Tuberculosis Infection

【治療 2】

ig.2 新登録肺結核患者の治療開始時受療状況別割合、年齢階層別、2016  
 roportion of the outpatients and the hospitalized patients by age group in 2016(N=13,608)



旧図 治療開始時結核を主たる理由に入院かつ退院時期情報があつた者について、性・年齢階層別入院期間（中央値および80パーセントイル値）、2015年新登録肺結核喀痰塗抹陽性初回治療者

Previous Fig. Median (50 percentile) and 80 percentile of duration of hospitalization among those hospitalized with tuberculosis and with known discharged day, new sputum-smear positive pulmonary tuberculosis patients in 2015 by sex and age group

旧表 年齢階層別治療開始時入院あるいは他疾患入院の割合(%)、総合患者分類別、2016年新登録結核患者  
 Previous table Proportion (%) hospitalized among newly notified tuberculosis patients in 2016 by age group and patient classification

年齢 Age	肺結核 Pulmonary TB									
	計 Total		喀痰塗抹陽性 Sputum smear positive		その他の結核菌陽性 Other bacillary positive		菌陰性・その他 Bacillary negative /unknown		肺外結核 Extra-pulmonary	
	入院 Ht	他入院 Ho	入院 Ht	他入院 Ho	入院 Ht	他入院 Ho	入院 Ht	他入院 Ho	入院 Ht	他入院 Ho
総数 Total	55.5	7.5	91.3	2.3	25.1	13.7	11.5	9.0	28.4	22.2
0-19	27.9	2.8	88.0	0.0	16.9	4.6	5.0	3.0	20.6	14.7
20-29	31.0	2.1	89.7	0.7	14.4	2.8	4.0	2.3	22.0	8.7
30-39	37.2	3.0	90.1	0.0	12.0	5.7	8.0	2.7	14.5	16.3
40-49	40.0	3.5	90.7	0.5	9.7	5.4	3.5	5.7	14.5	12.8
50-59	47.7	4.5	90.9	1.3	15.5	6.9	10.3	6.9	20.6	13.7
60-69	55.6	5.7	92.6	1.8	21.2	9.3	10.4	10.4	23.0	19.0
70-79	57.5	8.6	91.2	2.4	24.5	15.4	15.2	14.1	26.2	24.2
80-89	66.6	10.1	91.6	2.8	34.5	20.0	26.4	18.1	36.1	26.4
90+	71.2	12.7	91.0	3.9	42.3	25.5	34.4	27.9	39.0	28.3

入院: 結核を主たる理由に入院 Ht: Hospitalized for tuberculosis treatment

他入院: 結核以外の他疾患の治療を主たる理由に入院 Ho: Hospitalized mainly due to other diseases

【治療成績】

Table 2.1 2015年新登録肺結核患者の総合患者分類別によるコホート治療成績  
Treatment outcomes of newly notified patients with pulmonary tuberculosis (PTB) by patient classification,  
2015 year cohort - all PTB patients

	Patients with pulmonary tuberculosis									
	Total	Sputum-smear positive				Other bacteriologically positive	Bacteriologically negative and others			
		New	Re-treatment							
New pulmonary tuberculosis patients	13,971 (100%)	6,630 (100%)	454 (100%)	5,108 (100%)	1,779 (100%)					
Treatment outcomes (*)										
<b>1. Treatment Success</b>	<b>7,378</b>	<b>52.8</b>	<b>3,163</b>	<b>47.7</b>	<b>197</b>	<b>43.4</b>	<b>2,932</b>	<b>57.4</b>	<b>1,086</b>	<b>61.0</b>
Cure	2,034	14.6	1,134	17.1	77	17.0	625	12.2	198	11.1
Treatment completed	5,344	38.3	2,029	30.6	120	26.4	2,307	45.2	888	49.9
Treatment Completed 1	3,642	26.1	1,573	23.7	87	19.2	1,149	22.5	833	46.8
Treatment Completed 2	1,702	12.2	456	6.9	33	7.3	1,158	22.7	55	3.1
<b>2. Died</b>	<b>2,376</b>	<b>17.0</b>	<b>1,508</b>	<b>22.7</b>	<b>85</b>	<b>18.7</b>	<b>674</b>	<b>13.2</b>	<b>109</b>	<b>6.1</b>
<b>3. Treatment failed</b>	<b>60</b>	<b>0.4</b>	<b>43</b>	<b>0.6</b>	<b>2</b>	<b>0.4</b>	<b>11</b>	<b>0.2</b>	<b>4</b>	<b>0.2</b>
<b>4. Lost to follow-up</b>	<b>785</b>	<b>5.6</b>	<b>243</b>	<b>3.7</b>	<b>19</b>	<b>4.2</b>	<b>322</b>	<b>6.3</b>	<b>201</b>	<b>11.3</b>
Lost to follow-up 1	316	2.3	121	1.8	11	2.4	120	2.3	64	3.6
Lost to follow-up 2	469	3.4	122	1.8	8	1.8	202	4.0	137	7.7
<b>5. Transfer out</b>	<b>518</b>	<b>3.7</b>	<b>246</b>	<b>3.7</b>	<b>19</b>	<b>4.2</b>	<b>169</b>	<b>3.3</b>	<b>84</b>	<b>4.7</b>
<b>6. Still on treatment</b>	<b>1,099</b>	<b>7.9</b>	<b>618</b>	<b>9.3</b>	<b>63</b>	<b>13.9</b>	<b>328</b>	<b>6.4</b>	<b>90</b>	<b>5.1</b>
Still on treatment 1	244	1.7	137	2.1	12	2.6	78	1.5	17	1.0
Still on treatment 2	194	1.4	100	1.5	6	1.3	65	1.3	23	1.3
Still on treatment 3	423	3.0	249	3.8	31	6.8	108	2.1	35	2.0
Still on treatment 4	238	1.7	132	2.0	14	3.1	77	1.5	15	0.8
<b>7. Unclassified</b>	<b>1,755</b>	<b>12.6</b>	<b>809</b>	<b>12.2</b>	<b>69</b>	<b>15.2</b>	<b>672</b>	<b>13.2</b>	<b>205</b>	<b>11.5</b>
Unclassified 1	398	2.8	150	2.3	7	1.5	211	4.1	30	1.7
Unclassified 2	1	0.0	0	0.0	0	0.0	0	0.0	1	0.1
Unclassified 3	493	3.5	267	4.0	42	9.3	138	2.7	46	2.6
Unclassified 4	72	0.5	39	0.6	3	0.7	25	0.5	5	0.3
Unclassified 5	791	5.7	353	5.3	17	3.7	298	5.8	123	6.9

\*Treatment outcomes: See definitions in Table 3.

Table 2.2 2015年新登録肺結核患者の総合患者分類別によるコホート治療成績外国出生者全体  
Treatment outcomes of newly notified patients with pulmonary tuberculosis (PTB) by patient classification,  
2015 year cohort - foreign born patients with PTB

	Patients with pulmonary tuberculosis									
	Total	Sputum-smear positive				Other bacteriologically positive	Bacteriologically negative and others			
		New	Re-treatment							
New pulmonary tuberculosis patients	905 (100%)	306 (100%)	8 (100%)	346 (100%)	245 (100%)					
Treatment outcomes (*)										
<b>1. Treatment Success</b>	<b>551</b>	<b>60.9</b>	<b>169</b>	<b>55.2</b>	<b>4</b>	<b>50.0</b>	<b>223</b>	<b>64.5</b>	<b>155</b>	<b>63.3</b>
Cure	140	15.5	62	20.3	1	12.5	42	12.1	35	14.3
Treatment completed	411	45.4	107	35.0	3	37.5	181	52.3	120	49.0
Treatment Completed 1	285	31.5	85	27.8	3	37.5	84	24.3	113	46.1
Treatment Completed 2	126	13.9	22	7.2	0	0.0	97	28.0	7	2.9
<b>2. Died</b>	<b>9</b>	<b>1.0</b>	<b>7</b>	<b>2.3</b>	<b>0</b>	<b>0.0</b>	<b>2</b>	<b>0.6</b>	<b>0</b>	<b>0.0</b>
<b>3. Treatment failed</b>	<b>2</b>	<b>0.2</b>	<b>1</b>	<b>0.3</b>	<b>0</b>	<b>0.0</b>	<b>1</b>	<b>0.3</b>	<b>0</b>	<b>0.0</b>
<b>4. Lost to follow-up</b>	<b>65</b>	<b>7.2</b>	<b>18</b>	<b>5.9</b>	<b>0</b>	<b>0.0</b>	<b>20</b>	<b>5.8</b>	<b>27</b>	<b>11.0</b>
Lost to follow-up 1	22	2.4	10	3.3	0	0.0	5	1.4	7	2.9
Lost to follow-up 2	43	4.8	8	2.6	0	0.0	15	4.3	20	8.2
<b>5. Transfer out</b>	<b>156</b>	<b>17.2</b>	<b>62</b>	<b>20.3</b>	<b>0</b>	<b>0.0</b>	<b>53</b>	<b>15.3</b>	<b>41</b>	<b>16.7</b>
<b>6. Still on treatment</b>	<b>38</b>	<b>4.2</b>	<b>20</b>	<b>6.5</b>	<b>2</b>	<b>25.0</b>	<b>12</b>	<b>3.5</b>	<b>4</b>	<b>1.6</b>
Still on treatment 1	13	1.4	6	2.0	2	25.0	3	0.9	2	0.8
Still on treatment 2	5	0.6	2	0.7	0	0.0	1	0.3	2	0.8
Still on treatment 3	10	1.1	8	2.6	0	0.0	2	0.6	0	0.0
Still on treatment 4	10	1.1	4	1.3	0	0.0	6	1.7	0	0.0
<b>7. Unclassified</b>	<b>84</b>	<b>9.3</b>	<b>29</b>	<b>9.5</b>	<b>2</b>	<b>25.0</b>	<b>35</b>	<b>10.1</b>	<b>18</b>	<b>7.3</b>
Unclassified 1	21	2.3	6	2.0	0	0.0	10	2.9	5	2.0
Unclassified 2	0	0.0	0	0.0	0	0.0	0	0.0	0	0.0
Unclassified 3	16	1.8	9	2.9	2	25.0	4	1.2	1	0.4
Unclassified 4	2	0.2	2	0.7	0	0.0	0	0.0	0	0.0
Unclassified 5	45	5.0	12	3.9	0	0.0	21	6.1	12	4.9

\*Treatment outcomes: See definitions in Table 3.

Table 2.1a Treatment outcome of newly notified pulmonary tuberculosis patients by patient classification, 2015 year cohort - 0-19 years old, all PTB patients

	Pulmonary tuberculosis patients									
	Total	Sputum-smear positive					Other bacteriologically positive	Bacteriologically negative and others		
		New	Retreatment							
New pulmonary tuberculosis patients	168		43		1		61			63
Treatment outcomes (*)										
1. Treatment Success	120	71.4	28	65.1	1	100.0	45	73.8	46	73.0
Cure	31	18.5	10	23.3	1	100.0	12	19.7	8	12.7
Treatment completed	89	53.0	18	41.9	0	0.0	33	54.1	38	60.3
Treatment Completed 1	64	38.1	13	30.2	0	0.0	15	24.6	36	57.1
Treatment Completed 2	25	14.9	5	11.6	0	0.0	18	29.5	2	3.2
2. Died	1	0.6	1	2.3	0	0.0	0	0.0	0	0.0
3. Treatment failed	0	0.0	0	0.0	0	0.0	0	0.0	0	0.0
4. Lost to follow-up	12	7.1	1	2.3	0	0.0	4	6.6	7	11.1
Lost to follow-up 1	5	3.0	1	2.3	0	0.0	1	1.6	3	4.8
Lost to follow-up 2	7	4.2	0	0.0	0	0.0	3	4.9	4	6.3
5. Transfer out	18	10.7	7	16.3	0	0.0	6	9.8	5	7.9
6. Still on treatment	6	3.6	3	7.0	0	0.0	2	3.3	1	1.6
Still on treatment 1	2	1.2	1	2.3	0	0.0	1	1.6	0	0.0
Still on treatment 2	2	1.2	1	2.3	0	0.0	0	0.0	1	1.6
Still on treatment 3	2	1.2	1	2.3	0	0.0	1	1.6	0	0.0
Still on treatment 4	0	0.0	0	0.0	0	0.0	0	0.0	0	0.0
7. Unclassified	11	6.5	3	7.0	0	0.0	4	6.6	4	6.3
Unclassified 1	2	1.2	1	2.3	0	0.0	1	1.6	0	0.0
Unclassified 2	0	0.0	0	0.0	0	0.0	0	0.0	0	0.0
Unclassified 3	1	0.6	1	2.3	0	0.0	0	0.0	0	0.0
Unclassified 4	0	0.0	0	0.0	0	0.0	0	0.0	0	0.0
Unclassified 5	8	4.8	1	2.3	0	0.0	3	4.9	4	6.3

\*Treatment outcomes: See definitions in Table 5.

PTB: pulmonary tuberculosis

Table 2.2a Treatment outcome of newly notified pulmonary tuberculosis patients by patient classification, 2015 year cohort - 0-19 years old, foreign born patients

	Pulmonary tuberculosis patients									
	Total	Sputum-smear positive					Other bacteriologically positive	Bacteriologically negative and others		
		New	Retreatment							
New pulmonary tuberculosis patients	47		16		0		14			17
Treatment outcomes (*)										
1. Treatment Success	30	63.8	9	56.3	0	-	10	71.4	11	64.7
Cure	10	21.3	2	12.5	0	-	4	28.6	4	23.5
Treatment completed	20	42.6	7	43.8	0	-	6	42.9	7	41.2
Treatment Completed 1	13	27.7	4	25.0	0	-	2	14.3	7	41.2
Treatment Completed 2	7	14.9	3	18.8	0	-	4	28.6	0	0.0
2. Died	0	0.0	0	0.0	0	-	0	0.0	0	0.0
3. Treatment failed	0	0.0	0	0.0	0	-	0	0.0	0	0.0
4. Lost to follow-up	2	4.3	1	6.3	0	-	1	7.1	0	0.0
Lost to follow-up 1	1	2.1	1	6.3	0	-	0	0.0	0	0.0
Lost to follow-up 2	1	2.1	0	0.0	0	-	1	7.1	0	0.0
5. Transfer out	10	21.3	4	25.0	0	-	2	14.3	4	23.5
6. Still on treatment	0	0.0	0	0.0	0	-	0	0.0	0	0.0
Still on treatment 1	0	0.0	0	0.0	0	-	0	0.0	0	0.0
Still on treatment 2	0	0.0	0	0.0	0	-	0	0.0	0	0.0
Still on treatment 3	0	0.0	0	0.0	0	-	0	0.0	0	0.0
Still on treatment 4	0	0.0	0	0.0	0	-	0	0.0	0	0.0
7. Unclassified	5	10.6	2	12.5	0	-	1	7.1	2	11.8
Unclassified 1	2	4.3	1	6.3	0	-	1	7.1	0	0.0
Unclassified 2	0	0.0	0	0.0	0	-	0	0.0	0	0.0
Unclassified 3	1	2.1	1	6.3	0	-	0	0.0	0	0.0
Unclassified 4	0	0.0	0	0.0	0	-	0	0.0	0	0.0
Unclassified 5	2	4.3	0	0.0	0	-	0	0.0	2	11.8

\*Treatment outcomes: See definitions in Table 5.

PTB: pulmonary tuberculosis

Table 2.1b Treatment outcome of newly notified pulmonary tuberculosis patients by patient classification, 2015 year cohort - 20~39 years old, all PTB patients

	Pulmonary tuberculosis patients									
	Total	Sputum-smear positive				Other bacteriologically positive	Bacteriologically negative and others			
		New	Retreatment							
New pulmonary tuberculosis patients	1,855	600	36	737	482					
Treatment outcomes (*)										
1. Treatment Success	1,305	70.4	421	70.2	20	55.6	542	73.5	322	66.8
Cure	331	17.8	163	27.2	7	19.4	100	13.6	61	12.7
Treatment completed	974	52.5	258	43.0	13	36.1	442	60.0	261	54.1
Treatment Completed 1	633	34.1	199	33.2	9	25.0	182	24.7	243	50.4
Treatment Completed 2	341	18.4	59	9.8	4	11.1	260	35.3	18	3.7
2. Died	7	0.4	4	0.7	1	2.8	1	0.1	1	0.2
3. Treatment failed	6	0.3	5	0.8	0	0.0	0	0.0	1	0.2
4. Lost to follow-up	124	6.7	32	5.3	2	5.6	43	5.8	47	9.8
Lost to follow-up 1	40	2.2	14	2.3	2	5.6	13	1.8	11	2.3
Lost to follow-up 2	84	4.5	18	3.0	0	0.0	30	4.1	36	7.5
5. Transfer out	200	10.8	71	11.8	4	11.1	68	9.2	57	11.8
6. Still on treatment	67	3.6	28	4.7	4	11.1	22	3.0	13	2.7
Still on treatment 1	20	1.1	10	1.7	2	5.6	4	0.5	4	0.8
Still on treatment 2	12	0.6	5	0.8	0	0.0	3	0.4	4	0.8
Still on treatment 3	18	1.0	9	1.5	1	2.8	6	0.8	2	0.4
Still on treatment 4	17	0.9	4	0.7	1	2.8	9	1.2	3	0.6
7. Unclassified	146	7.9	39	6.5	5	13.9	61	8.3	41	8.5
Unclassified 1	18	1.0	3	0.5	0	0.0	10	1.4	5	1.0
Unclassified 2	0	0.0	0	0.0	0	0.0	0	0.0	0	0.0
Unclassified 3	22	1.2	7	1.2	3	8.3	8	1.1	4	0.8
Unclassified 4	8	0.4	2	0.3	0	0.0	5	0.7	1	0.2
Unclassified 5	98	5.3	27	4.5	2	5.6	38	5.2	31	6.4

\*Treatment outcomes: See definitions in Table 5.

PTB: pulmonary tuberculosis

Table 2.2b Treatment outcome of newly notified pulmonary tuberculosis patients by patient classification, 2015 year cohort - 20~39 years old, foreign born patients

	Pulmonary tuberculosis patients									
	Total	Sputum-smear positive				Other bacteriologically positive	Bacteriologically negative and others			
		New	Retreatment							
New pulmonary tuberculosis patients	657	195	5	266	191					
Treatment outcomes (*)										
1. Treatment Success	412	62.7	115	59.0	3	60.0	176	66.2	118	61.8
Cure	102	15.5	44	22.6	0	0.0	33	12.4	25	13.1
Treatment completed	310	47.2	71	36.4	3	60.0	143	53.8	93	48.7
Treatment Completed 1	216	32.9	59	30.3	3	60.0	68	25.6	86	45.0
Treatment Completed 2	94	14.3	12	6.2	0	0.0	75	28.2	7	3.7
2. Died	0	0.0	0	0.0	0	0.0	0	0.0	0	0.0
3. Treatment failed	0	0.0	0	0.0	0	0.0	0	0.0	0	0.0
4. Lost to follow-up	45	6.8	12	6.2	0	0.0	11	4.1	22	11.5
Lost to follow-up 1	16	2.4	6	3.1	0	0.0	3	1.1	7	3.7
Lost to follow-up 2	29	4.4	6	3.1	0	0.0	8	3.0	15	7.9
5. Transfer out	125	19.0	44	22.6	0	0.0	45	16.9	36	18.8
6. Still on treatment	21	3.2	10	5.1	1	20.0	7	2.6	3	1.6
Still on treatment 1	7	1.1	4	2.1	1	20.0	0	0.0	2	1.0
Still on treatment 2	3	0.5	1	0.5	0	0.0	1	0.4	1	0.5
Still on treatment 3	4	0.6	3	1.5	0	0.0	1	0.4	0	0.0
Still on treatment 4	7	1.1	2	1.0	0	0.0	5	1.9	0	0.0
7. Unclassified	54	8.2	14	7.2	1	20.0	27	10.2	12	6.3
Unclassified 1	15	2.3	3	1.5	0	0.0	8	3.0	4	2.1
Unclassified 2	0	0.0	0	0.0	0	0.0	0	0.0	0	0.0
Unclassified 3	9	1.4	3	1.5	1	20.0	4	1.5	1	0.5
Unclassified 4	0	0.0	0	0.0	0	0.0	0	0.0	0	0.0
Unclassified 5	30	4.6	8	4.1	0	0.0	15	5.6	7	3.7

\*Treatment outcomes: See definitions in Table 5.

PTB: pulmonary tuberculosis

Table 2.1c Treatment outcome of newly notified pulmonary tuberculosis patients by patient classification, 2015 year cohort - 40~59 years old, all PTB patients

	Pulmonary tuberculosis patients									
	Total	Sputum-smear positive				Other bacteriologically positive	Bacteriologically negative and others			
		New	Retreatment							
New pulmonary tuberculosis patients	2,156	908	63	814	371					
Treatment outcomes (*)										
1. Treatment Success	1,505	69.8	610	67.2	32	50.8	597	73.3	266	71.7
Cure	432	20.0	244	26.9	13	20.6	125	15.4	50	13.5
Treatment completed	1,073	49.8	366	40.3	19	30.2	472	58.0	216	58.2
Treatment Completed 1	750	34.8	297	32.7	14	22.2	232	28.5	207	55.8
Treatment Completed 2	323	15.0	69	7.6	5	7.9	240	29.5	9	2.4
2. Died	47	2.2	30	3.3	2	3.2	10	1.2	5	1.3
3. Treatment failed	10	0.5	8	0.9	0	0.0	2	0.2	0	0.0
4. Lost to follow-up	126	5.8	21	2.3	4	6.3	65	8.0	36	9.7
Lost to follow-up 1	46	2.1	16	1.8	1	1.6	20	2.5	9	2.4
Lost to follow-up 2	80	3.7	5	0.6	3	4.8	45	5.5	27	7.3
5. Transfer out	103	4.8	55	6.1	5	7.9	33	4.1	10	2.7
6. Still on treatment	163	7.6	96	10.6	8	12.7	47	5.8	12	3.2
Still on treatment 1	40	1.9	22	2.4	2	3.2	14	1.7	2	0.5
Still on treatment 2	34	1.6	18	2.0	2	3.2	11	1.4	3	0.8
Still on treatment 3	59	2.7	39	4.3	2	3.2	13	1.6	5	1.3
Still on treatment 4	30	1.4	17	1.9	2	3.2	9	1.1	2	0.5
7. Unclassified	202	9.4	88	9.7	12	19.0	60	7.4	42	11.3
Unclassified 1	21	1.0	6	0.7	2	3.2	8	1.0	5	1.3
Unclassified 2	0	0.0	0	0.0	0	0.0	0	0.0	0	0.0
Unclassified 3	49	2.3	25	2.8	6	9.5	9	1.1	9	2.4
Unclassified 4	14	0.6	8	0.9	1	1.6	3	0.4	2	0.5
Unclassified 5	118	5.5	49	5.4	3	4.8	40	4.9	26	7.0

\*Treatment outcomes: See definitions in Table 5.

PTB: pulmonary tuberculosis

Table 2.2c Treatment outcome of newly notified pulmonary tuberculosis patients by patient classification, 2015 year cohort - 40~59 years old, foreign born patients

	Pulmonary tuberculosis patients									
	Total	Sputum-smear positive				Other bacteriologically positive	Bacteriologically negative and others			
		New	Retreatment							
New pulmonary tuberculosis patients	141	60	3	46	32					
Treatment outcomes (*)										
1. Treatment Success	84	59.6	33	55.0	1	33.3	28	60.9	22	68.8
Cure	20	14.2	10	16.7	1	33.3	4	8.7	5	15.6
Treatment completed	64	45.4	23	38.3	0	0.0	24	52.2	17	53.1
Treatment Completed 1	47	33.3	19	31.7	0	0.0	11	23.9	17	53.1
Treatment Completed 2	17	12.1	4	6.7	0	0.0	13	28.3	0	0.0
2. Died	2	1.4	1	1.7	0	0.0	1	2.2	0	0.0
3. Treatment failed	1	0.7	1	1.7	0	0.0	0	0.0	0	0.0
4. Lost to follow-up	13	9.2	3	5.0	0	0.0	5	10.9	5	15.6
Lost to follow-up 1	3	2.1	3	5.0	0	0.0	0	0.0	0	0.0
Lost to follow-up 2	10	7.1	0	0.0	0	0.0	5	10.9	5	15.6
5. Transfer out	11	7.8	7	11.7	0	0.0	3	6.5	1	3.1
6. Still on treatment	11	7.8	5	8.3	1	33.3	4	8.7	1	3.1
Still on treatment 1	4	2.8	1	1.7	1	33.3	2	4.3	0	0.0
Still on treatment 2	2	1.4	1	1.7	0	0.0	0	0.0	1	3.1
Still on treatment 3	3	2.1	2	3.3	0	0.0	1	2.2	0	0.0
Still on treatment 4	2	1.4	1	1.7	0	0.0	1	2.2	0	0.0
7. Unclassified	19	13.5	10	16.7	1	33.3	5	10.9	3	9.4
Unclassified 1	2	1.4	1	1.7	0	0.0	0	0.0	1	3.1
Unclassified 2	0	0.0	0	0.0	0	0.0	0	0.0	0	0.0
Unclassified 3	5	3.5	4	6.7	1	33.3	0	0.0	0	0.0
Unclassified 4	1	0.7	1	1.7	0	0.0	0	0.0	0	0.0
Unclassified 5	11	7.8	4	6.7	0	0.0	5	10.9	2	6.3

\*Treatment outcomes: See definitions in Table 5.

PTB: pulmonary tuberculosis



Table 2.1d Treatment outcome of newly notified pulmonary tuberculosis patients by patient classification, 2015 year cohort - 60~ years old, all PTB patients

	Pulmonary tuberculosis patients									
	Total	Sputum-smear positive				Other bacteriologically positive	Bacteriologically negative and others			
		New	Retreatment							
New pulmonary tuberculosis patients	9,792	5,079	354			3,496	863			
Treatment outcomes (*)										
1. Treatment Success	4,448	45.4	2,104	41.4	144	40.7	1,748	50.0	452	52.4
Cure	1,240	12.7	717	14.1	56	15.8	388	11.1	79	9.2
Treatment completed	3,208	32.8	1,387	27.3	88	24.9	1,360	38.9	373	43.2
Treatment Completed 1	2,195	22.4	1,064	20.9	64	18.1	720	20.6	347	40.2
Treatment Completed 2	1,013	10.3	323	6.4	24	6.8	640	18.3	26	3.0
2. Died	2,321	23.7	1,473	29.0	82	23.2	663	19.0	103	11.9
3. Treatment failed	44	0.4	30	0.6	2	0.6	9	0.3	3	0.3
4. Lost to follow-up	523	5.3	189	3.7	13	3.7	210	6.0	111	12.9
Lost to follow-up 1	225	2.3	90	1.8	8	2.3	86	2.5	41	4.8
Lost to follow-up 2	298	3.0	99	1.9	5	1.4	124	3.5	70	8.1
5. Transfer out	197	2.0	113	2.2	10	2.8	62	1.8	12	1.4
6. Still on treatment	863	8.8	491	9.7	51	14.4	257	7.4	64	7.4
Still on treatment 1	182	1.9	104	2.0	8	2.3	59	1.7	11	1.3
Still on treatment 2	146	1.5	76	1.5	4	1.1	51	1.5	15	1.7
Still on treatment 3	344	3.5	200	3.9	28	7.9	88	2.5	28	3.2
Still on treatment 4	191	2.0	111	2.2	11	3.1	59	1.7	10	1.2
7. Unclassified	1,396	14.3	679	13.4	52	14.7	547	15.6	118	13.7
Unclassified 1	357	3.6	140	2.8	5	1.4	192	5.5	20	2.3
Unclassified 2	1	0.0	0	0.0	0	0.0	0	0.0	1	0.1
Unclassified 3	421	4.3	234	4.6	33	9.3	121	3.5	33	3.8
Unclassified 4	50	0.5	29	0.6	2	0.6	17	0.5	2	0.2
Unclassified 5	567	5.8	276	5.4	12	3.4	217	6.2	62	7.2

\*Treatment outcomes: See definitions in Table 5.

PTB: pulmonary tuberculosis

Table 2.2d Treatment outcome of newly notified pulmonary tuberculosis patients by patient classification, 2015 year cohort - 60~ years old, foreign born patients

	Pulmonary tuberculosis patients									
	Total	Sputum-smear positive				Other bacteriologically positive	Bacteriologically negative and others			
		New	Retreatment							
New pulmonary tuberculosis patients	60	35	0			20	5			
Treatment outcomes (*)										
1. Treatment Success	25	41.7	12	34.3	0	-	9	45.0	4	80.0
Cure	8	13.3	6	17.1	0	-	1	5.0	1	20.0
Treatment completed	17	28.3	6	17.1	0	-	8	40.0	3	60.0
Treatment Completed 1	9	15.0	3	8.6	0	-	3	15.0	3	60.0
Treatment Completed 2	8	13.3	3	8.6	0	-	5	25.0	0	0.0
2. Died	7	11.7	6	17.1	0	-	1	5.0	0	0.0
3. Treatment failed	1	1.7	0	0.0	0	-	1	5.0	0	0.0
4. Lost to follow-up	5	8.3	2	5.7	0	-	3	15.0	0	0.0
Lost to follow-up 1	2	3.3	0	0.0	0	-	2	10.0	0	0.0
Lost to follow-up 2	3	5.0	2	5.7	0	-	1	5.0	0	0.0
5. Transfer out	10	16.7	7	20.0	0	-	3	15.0	0	0.0
6. Still on treatment	6	10.0	5	14.3	0	-	1	5.0	0	0.0
Still on treatment 1	2	3.3	1	2.9	0	-	1	5.0	0	0.0
Still on treatment 2	0	0.0	0	0.0	0	-	0	0.0	0	0.0
Still on treatment 3	3	5.0	3	8.6	0	-	0	0.0	0	0.0
Still on treatment 4	1	1.7	1	2.9	0	-	0	0.0	0	0.0
7. Unclassified	6	10.0	3	8.6	0	-	2	10.0	1	20.0
Unclassified 1	2	3.3	1	2.9	0	-	1	5.0	0	0.0
Unclassified 2	0	0.0	0	0.0	0	-	0	0.0	0	0.0
Unclassified 3	1	1.7	1	2.9	0	-	0	0.0	0	0.0
Unclassified 4	1	1.7	1	2.9	0	-	0	0.0	0	0.0
Unclassified 5	2	3.3	0	0.0	0	-	1	5.0	1	20.0

\*Treatment outcomes: See definitions in Table 5.

PTB: pulmonary tuberculosis

Table 2.1e Treatment outcome of newly notified pulmonary tuberculosis patients by patient classification, 2015 year cohort DM all PTB patients

	Pulmonary tuberculosis patients									
	Total	Sputum-smear positive					Other bacteriologically positive	Bacteriologically negative and others		
		New	Retreatment							
New pulmonary tuberculosis patients	2,067	1,138	85	669	175					
Treatment outcomes (*)										
1. Treatment Success	882	42.7	438	38.5	28	32.9	330	49.3	86	49.1
Cure	235	11.4	140	12.3	11	12.9	65	9.7	19	10.9
Treatment completed	647	31.3	298	26.2	17	20.0	265	39.6	67	38.3
Treatment Completed 1	460	22.3	245	21.5	12	14.1	139	20.8	64	36.6
Treatment Completed 2	187	9.0	53	4.7	5	5.9	126	18.8	3	1.7
2. Died	439	21.2	280	24.6	21	24.7	116	17.3	22	12.6
3. Treatment failed	22	1.1	14	1.2	1	1.2	7	1.0	0	0.0
4. Lost to follow-up	100	4.8	48	4.2	4	4.7	32	4.8	16	9.1
Lost to follow-up 1	57	2.8	32	2.8	3	3.5	15	2.2	7	4.0
Lost to follow-up 2	43	2.1	16	1.4	1	1.2	17	2.5	9	5.1
5. Transfer out	73	3.5	48	4.2	4	4.7	18	2.7	3	1.7
6. Still on treatment	281	13.6	181	15.9	17	20.0	62	9.3	21	12.0
Still on treatment 1	44	2.1	29	2.5	2	2.4	10	1.5	3	1.7
Still on treatment 2	52	2.5	35	3.1	3	3.5	11	1.6	3	1.7
Still on treatment 3	137	6.6	84	7.4	9	10.6	32	4.8	12	6.9
Still on treatment 4	48	2.3	33	2.9	3	3.5	9	1.3	3	1.7
7. Unclassified	270	13.1	129	11.3	10	11.8	104	15.5	27	15.4
Unclassified 1	37	1.8	12	1.1	1	1.2	22	3.3	2	1.1
Unclassified 2	0	0.0	0	0.0	0	0.0	0	0.0	0	0.0
Unclassified 3	65	3.1	35	3.1	5	5.9	17	2.5	8	4.6
Unclassified 4	12	0.6	7	0.6	1	1.2	3	0.4	1	0.6
Unclassified 5	156	7.5	75	6.6	3	3.5	62	9.3	16	9.1

\*Treatment outcomes: See definitions in Table 5.

PTB: pulmonary tuberculosis

Table 2.2e Treatment outcome of newly notified pulmonary tuberculosis patients by patient classification, 2015 year cohort DM foreign born patients

	Pulmonary tuberculosis patients									
	Total	Sputum-smear positive					Other bacteriologically positive	Bacteriologically negative and others		
		New	Retreatment							
New pulmonary tuberculosis patients	41	25	0	11	5					
Treatment outcomes (*)										
1. Treatment Success	24	58.5	14	56.0	0	-	7	63.6	3	60.0
Cure	7	17.1	5	20.0	0	-	1	9.1	1	20.0
Treatment completed	17	41.5	9	36.0	0	-	6	54.5	2	40.0
Treatment Completed 1	13	31.7	8	32.0	0	-	3	27.3	2	40.0
Treatment Completed 2	4	9.8	1	4.0	0	-	3	27.3	0	0.0
2. Died	2	4.9	1	4.0	0	-	1	9.1	0	0.0
3. Treatment failed	2	4.9	1	4.0	0	-	1	9.1	0	0.0
4. Lost to follow-up	1	2.4	1	4.0	0	-	0	0.0	0	0.0
Lost to follow-up 1	0	0.0	0	0.0	0	-	0	0.0	0	0.0
Lost to follow-up 2	1	2.4	1	4.0	0	-	0	0.0	0	0.0
5. Transfer out	8	19.5	7	28.0	0	-	0	0.0	1	20.0
6. Still on treatment	2	4.9	1	4.0	0	-	1	9.1	0	0.0
Still on treatment 1	1	2.4	0	0.0	0	-	1	9.1	0	0.0
Still on treatment 2	0	0.0	0	0.0	0	-	0	0.0	0	0.0
Still on treatment 3	1	2.4	1	4.0	0	-	0	0.0	0	0.0
Still on treatment 4	0	0.0	0	0.0	0	-	0	0.0	0	0.0
7. Unclassified	2	4.9	0	0.0	0	-	1	9.1	1	20.0
Unclassified 1	0	0.0	0	0.0	0	-	0	0.0	0	0.0
Unclassified 2	0	0.0	0	0.0	0	-	0	0.0	0	0.0
Unclassified 3	0	0.0	0	0.0	0	-	0	0.0	0	0.0
Unclassified 4	0	0.0	0	0.0	0	-	0	0.0	0	0.0
Unclassified 5	2	4.9	0	0.0	0	-	1	9.1	1	20.0

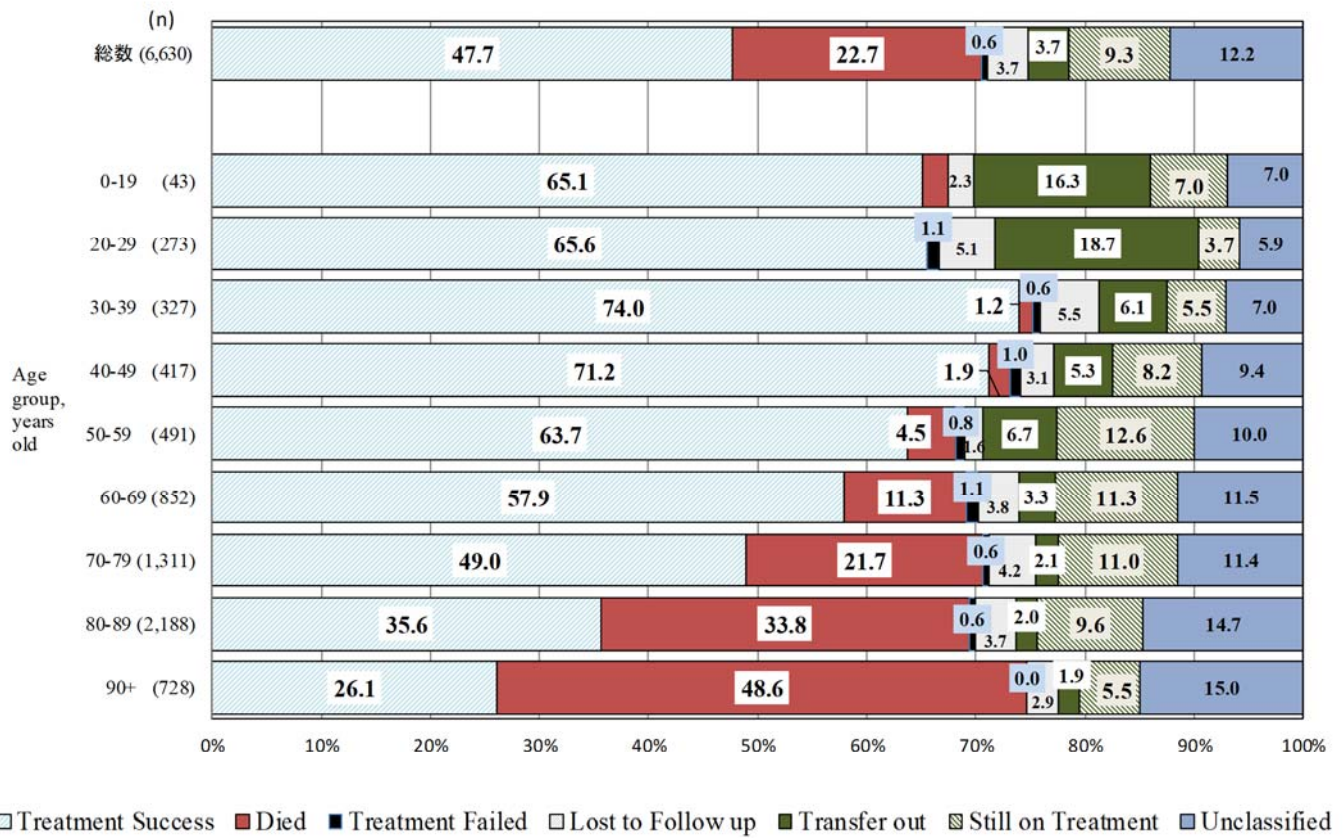
\*Treatment outcomes: See definitions in Table 5.

PTB: pulmonary tuberculosis

Table 3 治療成績区分と定義および新登録喀痰塗抹陽性初回治療肺結核患者の治療成績(率)  
Treatment outcomes of newly notified patients with sputum-smear positive pulmonary tuberculosis, 2007-2015 year cohorts, %

Treatment outcomes	Definition	2007	2008	2009	2010	2011	2012	2013	2014	2015	
		n=	9,421	8,999	8,772	8,242	7,736	7,694	7,600	7,198	6,630
1. Cure	A patient who completed treatment within 12 months and whose sputum culture tests were negative at least two times (one of the negative culture results was within three months before the completion of treatment).	16.9	17.6	20.7	20.1	20.0	18.4	18.6	17.4	17.1	
2. Treatment completed 1	A patient who completed treatment within 12 months but had only one negative sputum culture result.	24.9	26.8	27.2	27.4	20.7	20.9	22.9	23.0	23.7	
3. Treatment completed 2	A patient who completed treatment within 12 months but did not have a negative sputum culture result.	3.8	3.4	3.9	4.5	9.9	10.1	8.0	7.9	6.9	
4. Died	A patient who died for any reason during the course of treatment.	18.4	19.1	19.3	20.8	21.6	22.6	21.6	23.1	22.7	
5. Treatment failed	A patient whose sputum culture was positive at 5 months or later during the course of treatment.	1.0	1.1	0.9	0.7	0.7	0.7	0.6	0.5	0.6	
6. Lost to follow-up 1	A patient whose treatment was interrupted for 60 days (or two consecutive months) or more.	0.7	0.6	0.8	0.6	1.1	1.4	1.7	1.5	1.8	
7. Lost to follow-up 2	A patient whose treatment was stopped by physician's instruction before completing standard treatment.	4.3	3.2	2.9	2.3	2.2	2.3	2.7	2.4	1.8	
8. Transfer out	A patient who has been transferred out of the region where the patient was initially registered.	3.2	2.8	3.3	3.0	3.2	3.0	3.2	3.5	3.7	
9. Still on treatment 1	A patient who stopped INH and/or RFP and was still on treatment after 12 months.	1.7	1.4	2.0	1.6	1.8	1.9	2.2	1.9	2.1	
10. Still on treatment 2*	A patient who has been on treatment with INH and/or RFP and was still on treatment after 12 months due possibly to treatment interruption.	10.3	10.5	8.8	8.3	1.3	1.4	1.6	1.2	1.5	
11. Still on treatment 3	A patient who has been on treatment with INH and/or RFP and was still on treatment after 12 months without treatment interruption.					4.1	4.0	5.0	3.6	3.8	
12. Still on treatment 4	A patient who has been on treatment with INH and/or RFP and was still on treatment after 12 months due to unknown reasons.					3.9	3.2	2.3	1.9	2.0	
13. Unclassified 1	A patient who did not start tuberculosis treatment (due mostly to early death).	1.9	2.2	2.1	2.1	0.7	2.4	2.2	2.2	2.3	
14. Unclassified 2	A patient whose initial treatment regimen was unknown.	4.3	3.9	1.4	1.2	1.0	0.6	0.8	0.0	0.0	
15. Unclassified 3	A patient whose treatment regimen was other than the standard.	2.5	2.7	2.5	2.7	4.1	3.6	3.4	4.1	4.0	
16. Unclassified 4	A patient who stopped INH and/or RFP but completed treatment within 12 months.	1.1	1.1	1.3	1.1	0.4	0.4	0.4	0.5	0.6	
17. Unclassified 5	A patient whose information was insufficient for classifying treatment outcome.	5.1	3.8	2.9	3.5	3.1	3.1	2.8	5.3	5.3	

\*There were two categories of "Still on treatment" until 2010 cohorts. Since 2011, the categories have been divided into four kinds as indicated.  
INH: isoniazid, RFP: rifampicin



2015年新登録肺結核喀痰塗抹陽性初回治療者の年齢階層別コホート法による治療成績 (%)  
 Fig. 3 Treatment outcomes of newly notified sputum-smear positive pulmonary tuberculosis patients by age group, 2015 year cohort (%)

Table 4 2014,2015年における新登録結核患者と潜在性結核感染症登録患者の次年末時登録除外状況および除外理由、総合患者分類別  
Patients deleted from tuberculosis registration by the end of years (in 2015 and in 2016)  
- Patients with tuberculosis patients and LTBI notified in the previous years (in 2014 and in 2015, respectively) -

	Newly notified patients with tuberculosis										Patients with LTBI (Not included in the total) (%)
	Total (%)	Patients with pulmonary tuberculosis						Patients with extra-pulmonary tuberculosis (%)			
		Sub-total (pulmonary tuberculosis) (%)	Sputum-smear positive		Other bacteriologically positive (%)	Bacteriologically negative and others (%)					
			New (%)	Re-treatment (%)							
<b>Newly notified tuberculosis cases in 2014*</b>	<b>19,547 (100)</b>	<b>15,130 (100)</b>	<b>7,198 (100)</b>	<b>491 (100)</b>	<b>5,284 (100)</b>	<b>2,157 (100)</b>	<b>4,417 (100)</b>	<b>7,540 (100)</b>			
Total number of patients deleted from tuberculosis registration by the end of 2014	5,883 (30.1)	4,681 (30.9)	2,678 (37.2)	159 (32.4)	1,436 (27.2)	408 (18.9)	1,202 (27.2)	768 (10.2)			
No need for post-treatment follow-up	29 (0.1)	22 (0.1)	4 (0.1)	2 (0.4)	6 (0.1)	10 (0.5)	7 (0.2)	121 (1.6)			
Died	4,762 (24.4)	3,752 (24.8)	2,264 (31.5)	135 (27.5)	1,116 (21.1)	237 (11.0)	1,010 (22.9)	159 (2.1)			
Tuberculosis-related death	1,501 (7.7)	1,269 (8.4)	971 (13.5)	41 (8.4)	214 (4.0)	43 (2.0)	232 (5.3)	1 (0.0)			
Other causes of death	3,261 (16.7)	2,483 (16.4)	1,293 (18.0)	94 (19.1)	902 (17.1)	194 (9.0)	778 (17.6)	158 (2.1)			
Transfer out	952 (4.9)	792 (5.2)	362 (5.0)	14 (2.9)	270 (5.1)	146 (6.8)	160 (3.6)	412 (5.5)			
Register during follow-up	116 (0.6)	99 (0.7)	45 (0.6)	7 (1.4)	39 (0.7)	8 (0.4)	17 (0.4)	42 (0.6)			
Other reasons	24 (0.1)	16 (0.1)	3 (0.0)	1 (0.2)	5 (0.1)	7 (0.3)	8 (0.2)	34 (0.5)			
<b>Newly notified tuberculosis cases in 2015**</b>	<b>18,071 (100)</b>	<b>13,971 (100)</b>	<b>6,630 (100)</b>	<b>454 (100)</b>	<b>5,108 (100)</b>	<b>1,779 (100)</b>	<b>4,100 (100)</b>	<b>6,645 (100)</b>			
Total number of patients deleted from tuberculosis registration by the end of 2014	5,579 (30.9)	4,413 (31.6)	2,478 (37.4)	153 (33.7)	1,426 (27.9)	356 (20.0)	1,166 (28.4)	1,296 (19.5)			
No need for post-treatment follow-up	29 (0.2)	13 (0.1)	5 (0.1)	0 (0.0)	3 (0.1)	5 (0.3)	16 (0.4)	639 (9.6)			
Died	4,471 (24.7)	3,530 (25.3)	2,090 (31.5)	127 (28.0)	1,127 (22.1)	186 (10.5)	941 (23.0)	183 (2.8)			
Tuberculosis-related death	1,453 (8.0)	1,241 (8.9)	920 (13.9)	58 (12.8)	227 (4.4)	36 (2.0)	212 (5.2)	1 (0.0)			
Other causes of death	3,018 (16.7)	2,289 (16.4)	1,170 (17.6)	69 (15.2)	900 (17.6)	150 (8.4)	729 (17.8)	182 (2.7)			
Transfer out	972 (5.4)	793 (5.7)	356 (5.4)	24 (5.3)	268 (5.2)	145 (8.2)	179 (4.4)	380 (5.7)			
Register during follow-up	91 (0.5)	66 (0.5)	26 (0.4)	1 (0.2)	24 (0.5)	15 (0.8)	25 (0.6)	53 (0.8)			
Other reasons	16 (0.1)	11 (0.1)	1 (0.0)	1 (0.2)	4 (0.1)	5 (0.3)	5 (0.1)	41 (0.6)			

\* Based on the annual report database in 2014. \*\* Based on the annual report database in 2015.  
LTBI : Latent Tuberculosis Infection

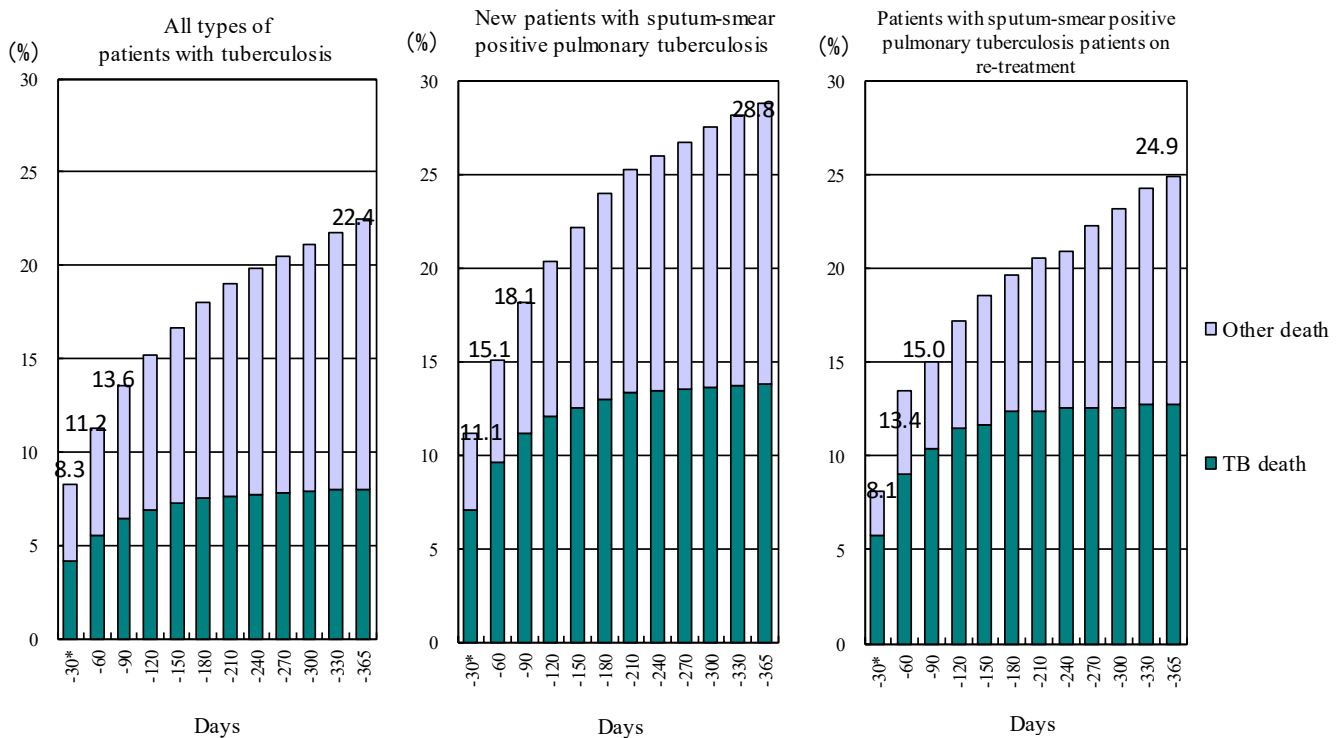


Fig. 4 2015年新登録結核患者中治療開始後1年以内死亡者の時期別・死因別累積死亡割合 (%)  
Cumulative proportion of deaths by duration of treatment - Newly notified patients with tuberculosis in 2015

\* Includes patients who died before the commencement of treatment.  
TB: tuberculosis