

【概況】

人口10万対率  
Rate per 100,000

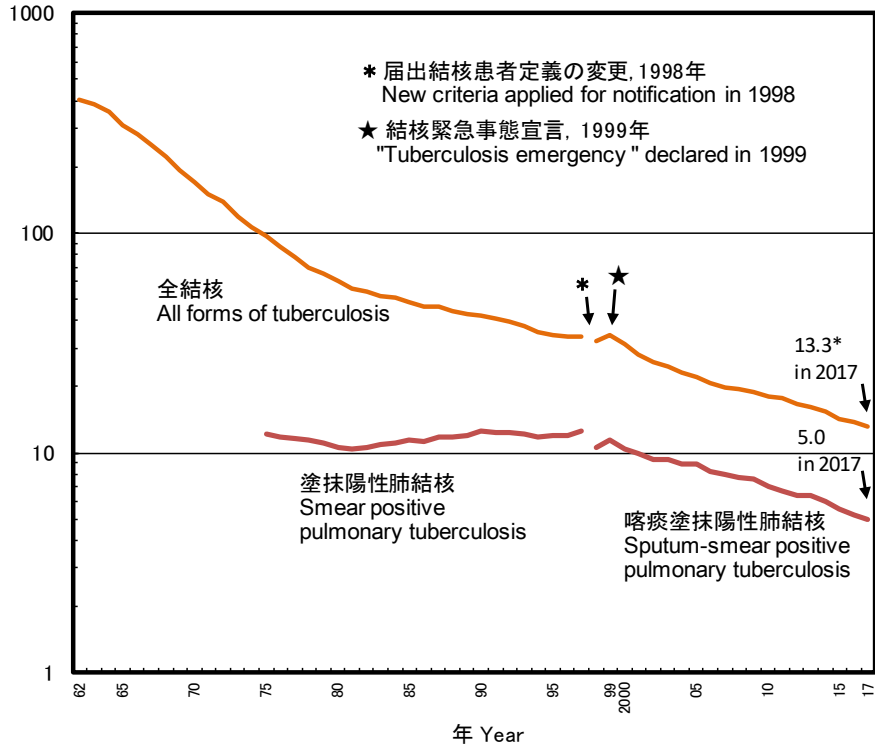


図 1 人口10万対年間新結核患者登録数(登録率)の年次推移, 1962~2017年  
Fig. 1 Annual trend of tuberculosis notification rate (all forms, sputum-smear positive pulmonary tuberculosis) per 100,000 population in Japan, 1962-2017

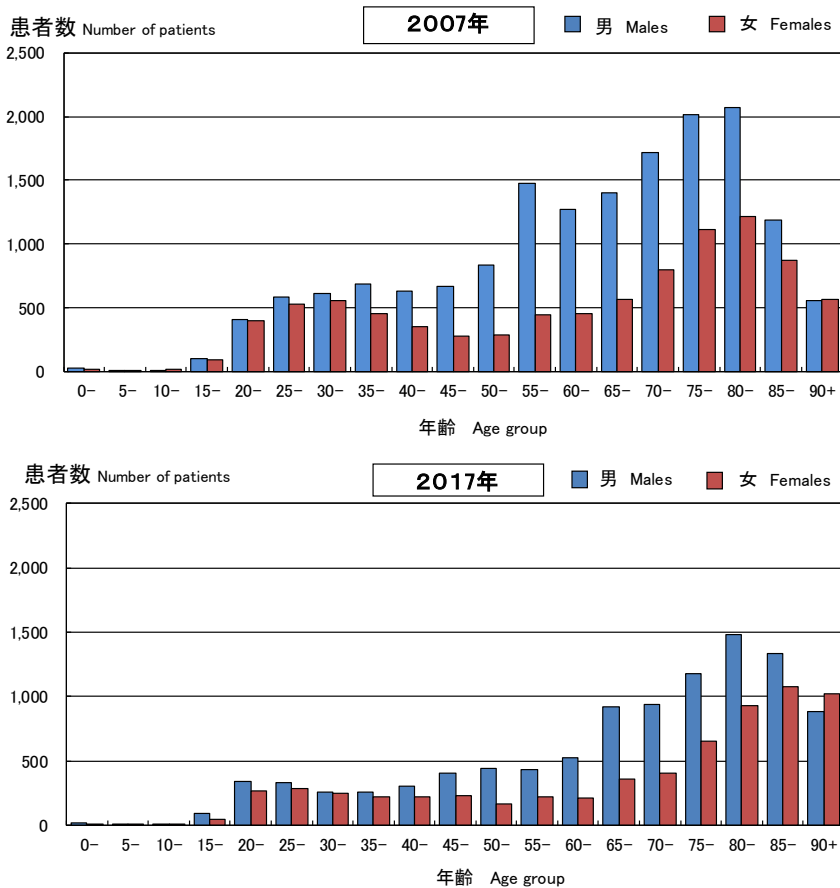


図 2 新登録結核患者数の年齢分布, 性別, 2007年・2017年  
Fig. 2 Age distribution of newly notified tuberculosis patients by sex in Japan, in 2006 and in 2017

表 1 新登録結核患者数(全結核、初回治療・再治療別、肺結核・肺外結核別)、年齢階層別、2013~2017年  
 Table 1 Number of newly notified tuberculosis patients (all forms, new and re-treatment, pulmonary and extra-pulmonary), by age group, in Japan, 2013-2017

年齢階層 Age group	新登録全結核患者数 Tuberculosis notifications, all forms (*1)					新全結核患者登録率(罹患率) Tuberculosis notification rates, all forms (*2)					初回治療結核 New tuberculosis										再治療結核 Re-treatment tuberculosis																																							
	肺結核 Pulmonary tuberculosis										肺結核 Pulmonary tuberculosis										肺外結核 Extra-pulmonary tuberculosis					肺外結核 Extra-pulmonary tuberculosis																																		
	喀痰塗抹陰性肺結核 Sputum-smear negative					その他菌陽性肺結核 Other bacteriologically positive					菌検査結果不明 Bacteriological test results unknown					喀痰塗抹陽性肺結核 Sputum-smear positive					その他菌陽性肺結核 Other bacteriologically positive					菌検査結果不明 Bacteriological test results unknown																																		
	2013	2014	2015	2016	2017	2013	2014	2015	2016	2017	2013	2014	2015	2016	2017	2013	2014	2015	2016	2017	2013	2014	2015	2016	2017	2013	2014	2015	2016	2017	2013	2014	2015	2016	2017	2013	2014	2015	2016	2017																				
総数 Total	20,495	19,615	18,280	17,625	16,789	16.1	15.4	14.4	13.9	13.3	7,584	7,153	6,676	6,281	6,031	5,174	4,937	4,819	4,777	4,645	2,041	1,918	1,638	1,709	1,588	160	173	139	106	87	4,274	4,255	3,976	3,844	3,599	535	498	455	361	328	296	296	264	249	223	163	157	119	115	99	19	17	13	10	10	249	211	181	173	179
0-14	66	49	51	59	59	0.4	0.3	0.3	0.4	0.4	0	1	2	2	4	14	11	12	12	8	26	18	17	20	24	1	4	2	5	5	20	13	16	18	13	0	0	0	1	0	1	0	0	0	1	3	1	1	1	1	0	0	1	0	2	1	1	0	0	1
15-19	165	168	163	190	148	2.7	2.8	2.8	3.1	2.5	44	31	40	45	40	37	54	47	48	47	45	50	37	69	44	4	4	3	4	1	21	15	29	14	16	5	5	1	2	0	1	3	2	5	0	5	5	3	0	0	1	1	0	1	0	2	0	1	2	0
20-29	1,196	1,188	1,127	1,235	1,231	9.1	9.2	9.0	9.8	9.8	345	321	277	269	279	346	356	378	420	423	302	277	271	320	294	15	18	12	19	13	144	164	151	160	180	12	8	15	13	10	16	15	12	11	15	7	20	9	9	6	2	1	0	1	1	7	8	2	13	10
30-39	1,317	1,235	1,101	1,004	987	7.9	7.7	7.1	6.5	6.6	393	323	327	269	289	379	371	313	320	298	261	255	202	207	171	17	16	12	7	8	200	202	192	157	178	19	18	21	13	16	13	14	20	12	7	15	12	2	10	6	1	2	0	0	1	19	22	12	9	13
40-49	1,496	1,440	1,363	1,228	1,159	8.3	7.8	7.5	6.5	6.1	495	453	426	363	348	418	416	396	360	373	227	229	198	198	169	16	20	20	12	8	266	234	243	228	186	28	27	28	23	23	12	18	22	13	20	10	19	15	16	13	2	0	4	1	0	22	24	21	14	19
50-59	1,665	1,514	1,351	1,295	1,268	10.8	9.8	8.8	8.4	8.1	606	550	501	433	414	429	366	357	380	381	207	187	156	151	164	15	24	14	6	8	270	277	234	243	219	57	47	34	20	35	34	23	26	26	15	18	21	5	12	11	3	3	3	5	3	26	16	21	19	18
60-69	2,833	2,597	2,359	2,213	2,024	15.4	14.3	13.1	12.0	11.4	1,045	936	858	792	756	716	656	616	566	536	283	253	241	205	203	29	23	20	26	14	556	547	476	498	408	74	74	77	60	48	41	52	26	23	30	41	23	19	18	13	5	2	3	1	1	43	31	23	24	15
70-79	4,359	4,028	3,757	3,407	3,187	31.4	28.4	26.9	24.5	22.0	1,572	1,465	1,323	1,184	1,169	1,064	961	966	856	830	340	297	257	258	236	30	30	26	6	16	1,081	1,017	974	917	771	110	113	85	68	69	75	65	58	53	35	29	32	28	26	25	4	4	1	0	1	54	44	39	39	35
80-89	5,856	5,753	5,317	5,138	4,822	76.2	72.5	66.0	60.8	55.5	2,426	2,389	2,194	2,095	1,904	1,392	1,309	1,289	1,321	1,267	290	290	216	228	217	32	30	23	19	10	1,354	1,401	1,280	1,219	1,192	184	168	153	120	91	85	85	81	78	69	29	20	28	18	21	1	4	1	0	1	63	57	52	40	50
90+	1,542	1,643	1,691	1,856	1,904	95.6	95.7	92.0	96.3	92.7	658	684	728	829	828	379	437	445	494	482	60	62	53	53	66	1	4	7	2	4	362	385	381	390	436	46	38	41	41	36	18	21	17	28	31	6	4	9	5	3	0	0	0	1	0	12	8	10	13	18

\*1: All forms include new and re-treatment tuberculosis patients.

\*2: 人口10万対率 Rate per 100,000 population

表 2 新登録潜在性結核感染症登録者数、性・年齢階層別、2015～2017年  
Table 2 Newly notified latent tuberculosis infection (LTBI) patients, by sex and age group, in Japan, from 2015 to 2017

年齢 Age group	2015年					2016年					2017年				
	総数 Total	性 Sex		割合 (%)	女/男 Ratio of F/M	総数 Total	性 Sex		割合 (%)	女/男 Ratio of F/M	総数 Total	性 Sex		割合 (%)	女/男 Ratio of F/M
		男 Males	女 Females				男 Males	女 Females				男 Males	女 Females		
総数 Total	6,675	3,046	3,629	100	1.2	7,477	3,605	3,872	100	1.1	7,255	3,374	3,881	100	1.2
0-4	420	182	238	6.3	1.3	419	203	216	5.6	1.1	439	195	244	6.1	1.3
5-9	131	67	64	2.0	1.0	96	48	48	1.3	1.0	119	59	60	1.6	1.0
10-14	110	59	51	1.6	0.9	83	46	37	1.1	0.8	73	36	37	1.0	1.0
15-19	124	55	69	1.9	1.3	162	93	69	2.2	0.7	117	63	54	1.6	0.9
20-24	342	138	204	5.1	1.5	403	189	214	5.4	1.1	363	166	197	5.0	1.2
25-29	404	169	235	6.1	1.4	493	238	255	6.6	1.1	436	211	225	6.0	1.1
30-34	444	189	255	6.7	1.3	445	189	256	6.0	1.4	393	170	223	5.4	1.3
35-39	489	193	296	7.3	1.5	443	185	258	5.9	1.4	425	167	258	5.9	1.5
40-44	499	210	289	7.5	1.4	541	226	315	7.2	1.4	481	194	287	6.6	1.5
45-49	543	216	327	8.1	1.5	607	269	338	8.1	1.3	569	225	344	7.8	1.5
50-54	543	222	321	8.1	1.4	584	239	345	7.8	1.4	542	239	303	7.5	1.3
55-59	520	247	273	7.8	1.1	616	270	346	8.2	1.3	508	214	294	7.0	1.4
60-64	497	243	254	7.4	1.0	578	301	277	7.7	0.9	510	241	269	7.0	1.1
65-69	523	280	243	7.8	0.9	683	382	301	9.1	0.8	680	341	339	9.4	1.0
70+	1,086	576	510	16.3	0.9	1,324	727	597	17.7	0.8	1,600	853	747	22.1	0.9

Ratio of F/M: Ratio of female patients to male patients  
%: proportion

旧表 新登録結核患者数, および潜在性結核感染症治療対象者数、登録月別, 2017年  
Previous table Newly notified tuberculosis cases by registered month, 2017

登録月 Registered month	活動性結核 Active tuberculosis									(別掲) 潜在性結 核感染症 LTBI* on treatment
	総数 All active tuberculosis	肺結核活動性 Active pulmonary tuberculosis							肺外結核 活動性 Extra- pulmonary	
		総数 All active pulmonary tuberculosis	喀痰塗抹陽性 Sputum smear positive			その他結 核菌陽性 Other bacillary positive	菌陰性・ その他 Bacillary negative or bacillary results unknown			
			総数 All sputum smear positive	初回治療 New	再治療 Retreatment					
総数 Total	16,789	13,011	6,359	6,031	328	4,868	1,784	3,778	7,255	
1月 Jan.	1,221	939	463	434	29	344	132	282	501	
2月 Feb.	1,306	1,031	501	467	34	386	144	275	542	
3月 Mar.	1,395	1,092	541	504	37	408	143	303	613	
4月 Apr.	1,323	1,004	510	488	22	371	123	319	533	
5月 May	1,475	1,112	564	533	31	402	146	363	518	
6月 Jun.	1,623	1,273	606	579	27	488	179	350	655	
7月 Jul.	1,425	1,083	533	513	20	391	159	342	554	
8月 Aug.	1,478	1,158	559	537	22	465	134	320	657	
9月 Sep.	1,395	1,092	540	519	21	396	156	303	687	
10月 Oct.	1,394	1,093	539	510	29	396	158	301	711	
11月 Nov.	1,356	1,056	495	463	32	411	150	300	602	
12月 Dec.	1,398	1,078	508	484	24	410	160	320	682	

\* LTBI: Latent Tuberculosis Infection. These are not included in the number of active tuberculosis.

表3.1 新登録結核患者数、結核病類別、性・年齢階層別、1998～2017年  
Table 3.1 Newly notified tuberculosis patients by affected organ, sex and age group, in Japan, from 1998 to 2017

性・年齢 2017年 Sex・Age-group in 2017	全結核 Tuberculosis notifications, all forms	肺結核 Pulmonary tuberculosis				肺外結核 Extra-pulmonary tuberculosis															
		肺 Lungs	気管支 Bronchi	咽頭・ 喉頭 Pharynx / Larynx	粟粒 Miliary	胸膜炎 Pleuritis	膿胸 Empyema	肺門・縦隔 リンパ節 Hilar・ Mediastinal lymph node	他の リンパ節 Other lymph nodes	髄膜炎 Menin- ges	腸 Intes- tines	脊椎 Verte- brae	他の 骨関節 Other joints / bones	腎・尿路 Kidneys / Urinary tracts	性器 Genitals	皮膚 Skins	眼 Eyes	耳 Ears	腹膜炎 Perito- neum	心膜炎 Pericar- dium	他の 臓器 Other organs
総数 Total	16,789	13,469 (80.2)	97 (0.6)	30 (0.2)	687 (4.1)	2,868 (17.1)	31 (0.2)	140 (0.8)	779 (4.6)	164 (1.0)	220 (1.3)	150 (0.9)	91 (0.5)	53 (0.3)	19 (0.1)	80 (0.5)	19 (0.1)	18 (0.1)	178 (1.1)	73 (0.4)	161 (1.0)
男 Male	10,171	8,402 (82.6)	41 (0.4)	13 (0.1)	264 (2.6)	1,894 (18.6)	18 (0.2)	75 (0.7)	258 (2.5)	95 (0.9)	95 (0.9)	64 (0.6)	49 (0.5)	28 (0.3)	12 (0.1)	31 (0.3)	5 (0.0)	8 (0.1)	93 (0.9)	47 (0.5)	80 (0.8)
女 Female	6,618	5,067 (76.6)	56 (0.8)	17 (0.3)	423 (6.4)	974 (14.7)	13 (0.2)	65 (1.0)	521 (7.9)	69 (1.0)	125 (1.9)	86 (1.3)	42 (0.6)	25 (0.4)	7 (0.1)	49 (0.7)	14 (0.2)	10 (0.2)	85 (1.3)	26 (0.4)	81 (1.2)
0-14	59	46 (78.0)	0 (0.0)	0 (0.0)	3 (5.1)	2 (3.4)	0 (0.0)	3 (5.1)	3 (5.1)	2 (3.4)	0 (0.0)	1 (1.7)	2 (3.4)	0 (0.0)	0 (0.0)	1 (1.7)	0 (0.0)	0 (0.0)	0 (0.0)	0 (0.0)	2 (3.4)
15-19	148	135 (91.2)	3 (2.0)	1 (0.7)	3 (2.0)	14 (9.5)	0 (0.0)	0 (0.0)	4 (2.7)	1 (0.7)	2 (1.4)	0 (0.0)	0 (0.0)	0 (0.0)	0 (0.0)	0 (0.0)	0 (0.0)	0 (0.0)	1 (0.7)	0 (0.0)	0 (0.0)
20-29	1,231	1,048 (85.1)	6 (0.5)	1 (0.1)	8 (0.6)	116 (9.4)	0 (0.0)	18 (1.5)	105 (8.5)	9 (0.7)	14 (1.1)	2 (0.2)	8 (0.6)	1 (0.1)	0 (0.0)	5 (0.4)	2 (0.2)	0 (0.0)	11 (0.9)	2 (0.2)	13 (1.1)
30-39	987	809 (82.0)	10 (1.0)	3 (0.3)	18 (1.8)	96 (9.7)	0 (0.0)	21 (2.1)	87 (8.8)	19 (1.9)	10 (1.0)	6 (0.6)	2 (0.2)	5 (0.5)	1 (0.1)	2 (0.2)	2 (0.2)	1 (0.1)	7 (0.7)	2 (0.2)	13 (1.3)
40-49	1,159	961 (82.9)	8 (0.7)	2 (0.2)	11 (0.9)	138 (11.9)	2 (0.2)	16 (1.4)	77 (6.6)	14 (1.2)	28 (2.4)	4 (0.3)	1 (0.1)	7 (0.6)	1 (0.1)	2 (0.2)	2 (0.2)	5 (0.4)	11 (0.9)	0 (0.0)	13 (1.1)
50-59	1,268	1,044 (82.3)	7 (0.6)	0 (0.0)	24 (1.9)	150 (11.8)	1 (0.1)	20 (1.6)	70 (5.5)	15 (1.2)	30 (2.4)	12 (0.9)	10 (0.8)	3 (0.2)	1 (0.1)	3 (0.2)	4 (0.3)	3 (0.2)	16 (1.3)	5 (0.4)	15 (1.2)
60-69	2,024	1,627 (80.4)	10 (0.5)	4 (0.2)	45 (2.2)	267 (13.2)	2 (0.1)	18 (0.9)	116 (5.7)	26 (1.3)	38 (1.9)	19 (0.9)	12 (0.6)	12 (0.6)	3 (0.1)	7 (0.3)	3 (0.1)	2 (0.1)	26 (1.3)	9 (0.4)	21 (1.0)
70-79	3,187	2,459 (77.2)	19 (0.6)	10 (0.3)	123 (3.9)	561 (17.6)	8 (0.3)	32 (1.0)	145 (4.5)	26 (0.8)	51 (1.6)	35 (1.1)	28 (0.9)	17 (0.5)	9 (0.3)	25 (0.8)	3 (0.1)	1 (0.0)	36 (1.1)	27 (0.8)	48 (1.5)
80-89	4,822	3,781 (78.4)	27 (0.6)	6 (0.1)	316 (6.6)	1,068 (22.1)	14 (0.3)	11 (0.2)	140 (2.9)	44 (0.9)	39 (0.8)	59 (1.2)	19 (0.4)	8 (0.2)	3 (0.1)	26 (0.5)	2 (0.0)	6 (0.1)	57 (1.2)	22 (0.5)	30 (0.6)
90+	1,904	1,559 (81.9)	7 (0.4)	3 (0.2)	136 (7.1)	456 (23.9)	4 (0.2)	1 (0.1)	32 (1.7)	8 (0.4)	8 (0.4)	12 (0.6)	9 (0.5)	0 (0.0)	1 (0.1)	9 (0.5)	1 (0.1)	0 (0.0)	13 (0.7)	6 (0.3)	6 (0.3)
年 Year	総数 Total																				
1998	41,033	33,981 (82.8)	-	-	505 (1.2)	5,125 (12.5)	251 (0.6)	136 (0.3)	1,469 (3.6)	154 (0.4)	335 (0.8)	385 (0.9)	328 (0.8)	227 (0.6)	78 (0.2)	100 (0.2)	12 (0.0)	25 (0.1)	-	-	692 (1.7)
1999	43,818	36,190 (82.6)	-	-	603 (1.4)	5,586 (12.7)	221 (0.5)	143 (0.3)	1,538 (3.5)	163 (0.4)	345 (0.8)	334 (0.8)	300 (0.7)	179 (0.4)	96 (0.2)	94 (0.2)	13 (0.0)	28 (0.1)	-	-	684 (1.6)
2000	39,384	32,338 (82.1)	-	-	597 (1.5)	5,108 (13.0)	202 (0.5)	123 (0.3)	1,432 (3.6)	158 (0.4)	356 (0.9)	319 (0.8)	272 (0.7)	181 (0.5)	72 (0.2)	123 (0.3)	16 (0.0)	38 (0.1)	-	-	656 (1.7)
2001	35,489	28,868 (81.3)	-	-	642 (1.8)	4,840 (13.6)	162 (0.5)	102 (0.3)	1,368 (3.9)	177 (0.5)	275 (0.8)	276 (0.8)	274 (0.8)	172 (0.5)	72 (0.2)	104 (0.3)	11 (0.0)	25 (0.1)	-	-	619 (1.7)
2002	32,828	26,472 (80.6)	-	-	626 (1.9)	4,666 (14.2)	152 (0.5)	84 (0.3)	1,269 (3.9)	188 (0.6)	323 (1.0)	299 (0.9)	222 (0.7)	148 (0.5)	66 (0.2)	100 (0.3)	19 (0.1)	29 (0.1)	-	-	544 (1.7)
2003	31,638	25,478 (80.5)	-	-	639 (2.0)	4,539 (14.3)	142 (0.4)	83 (0.3)	1,341 (4.2)	149 (0.5)	276 (0.9)	268 (0.8)	223 (0.7)	144 (0.5)	47 (0.1)	87 (0.3)	15 (0.0)	28 (0.1)	-	-	570 (1.8)
2004	29,736	23,829 (80.1)	-	-	617 (2.1)	4,491 (15.1)	125 (0.4)	70 (0.2)	1,293 (4.3)	160 (0.5)	299 (1.0)	275 (0.9)	220 (0.7)	112 (0.4)	53 (0.2)	95 (0.3)	13 (0.0)	30 (0.1)	-	-	564 (1.9)
2005	28,319	22,655 (80.0)	-	-	585 (2.1)	4,338 (15.3)	115 (0.4)	88 (0.3)	1,151 (4.1)	180 (0.6)	296 (1.0)	233 (0.8)	201 (0.7)	130 (0.5)	37 (0.1)	98 (0.3)	11 (0.0)	33 (0.1)	-	-	536 (1.9)
2006	26,384	20,856 (79.0)	-	-	616 (2.3)	4,192 (15.9)	97 (0.4)	79 (0.3)	1,191 (4.5)	127 (0.5)	263 (1.0)	248 (0.9)	231 (0.9)	112 (0.4)	40 (0.2)	109 (0.4)	9 (0.0)	24 (0.1)	-	-	554 (2.1)
2007	25,311	20,264 (80.1)	108 (0.4)	31 (0.1)	602 (2.4)	4,134 (16.3)	75 (0.3)	57 (0.2)	1,186 (4.7)	153 (0.6)	328 (1.3)	232 (0.9)	190 (0.8)	108 (0.4)	34 (0.1)	92 (0.4)	19 (0.1)	18 (0.1)	92 (0.4)	61 (0.2)	281 (1.1)
2008	24,760	19,780 (79.9)	117 (0.5)	43 (0.2)	570 (2.3)	4,001 (16.2)	78 (0.3)	68 (0.3)	1,194 (4.8)	171 (0.7)	292 (1.2)	273 (1.1)	170 (0.7)	121 (0.5)	34 (0.1)	92 (0.4)	13 (0.1)	29 (0.1)	144 (0.6)	80 (0.3)	181 (0.7)
2009	24,170	19,278 (79.8)	121 (0.5)	36 (0.1)	604 (2.5)	3,940 (16.3)	63 (0.3)	73 (0.3)	1,221 (5.1)	162 (0.7)	321 (1.3)	241 (1.0)	182 (0.8)	100 (0.4)	23 (0.1)	121 (0.5)	26 (0.1)	22 (0.1)	168 (0.7)	88 (0.4)	179 (0.7)
2010	23,261	18,735 (80.5)	127 (0.5)	53 (0.2)	598 (2.6)	3,959 (17.0)	48 (0.2)	74 (0.3)	1,158 (5.0)	138 (0.6)	330 (1.4)	239 (1.0)	159 (0.7)	88 (0.4)	35 (0.2)	97 (0.4)	29 (0.1)	12 (0.1)	154 (0.7)	76 (0.3)	171 (0.7)
2011	22,681	17,969 (79.2)	129 (0.6)	57 (0.3)	695 (3.1)	3,929 (17.3)	52 (0.2)	70 (0.3)	1,199 (5.3)	156 (0.7)	317 (1.4)	250 (1.1)	145 (0.6)	83 (0.4)	22 (0.1)	89 (0.4)	27 (0.1)	21 (0.1)	173 (0.8)	89 (0.4)	187 (0.8)
2012	21,283	16,826 (79.1)	107 (0.5)	46 (0.2)	608 (2.9)	3,653 (17.2)	63 (0.3)	134 (0.6)	1,038 (4.9)	152 (0.7)	348 (1.6)	255 (1.2)	157 (0.7)	82 (0.4)	20 (0.1)	97 (0.5)	34 (0.2)	16 (0.1)	176 (0.8)	80 (0.4)	166 (0.8)
2013	20,495	16,380 (79.9)	131 (0.6)	34 (0.2)	635 (3.1)	3,634 (17.7)	48 (0.2)	128 (0.6)	972 (4.7)	181 (0.9)	298 (1.5)	228 (1.1)	138 (0.7)	74 (0.4)	29 (0.1)	87 (0.4)	22 (0.1)	17 (0.1)	190 (0.9)	87 (0.4)	153 (0.7)
2015	18,280	14,581 (79.8)	119 (0.7)	43 (0.2)	631 (3.5)	3,277 (17.9)	46 (0.3)	128 (0.7)	813 (4.4)	166 (0.9)	248 (1.4)	192 (1.1)	98 (0.5)	73 (0.4)	21 (0.1)	87 (0.5)	20 (0.1)	19 (0.1)	176 (1.0)	69 (0.4)	134 (0.7)
2016	17,825	14,014 (78.5)	119 (0.7)	44 (0.2)	633 (3.6)	3,141 (17.8)	30 (0.2)	121 (0.7)	835 (4.7)	164 (0.9)	264 (1.5)	194 (1.1)	101 (0.6)	83 (0.5)	19 (0.1)	80 (0.5)	25 (0.1)	15 (0.1)	184 (1.0)	81 (0.5)	149 (0.8)
2017	16,789	13,469 (80.2)	97 (0.6)	30 (0.2)	687 (4.1)	2,868 (17.1)	31 (0.2)	140 (0.8)	779 (4.6)	164 (1.0)	220 (1.3)	150 (0.9)	91 (0.5)	53 (0.3)	19 (0.1)	80 (0.5)	19 (0.1)	18 (0.1)	178 (1.1)	73 (0.4)	161 (1.0)

注1: 結核病類は重複あり。 Note1: Cases having multiple organs are counted independently.

注2: 括弧内は各性・年齢階層、登録年の新登録患者数に対する割合(%)。 Note2: Numbers in brackets indicate the proportion out of the total number of newly notified tuberculosis cases (all forms) for each sex and age group.

表3.2 粟粒結核患者数・割合、性・年齢階層別、2004～2017年

Table 3.2 Number and proportio of miliary tuberculosis by age group and sex, 2004-2017

年 year	年齢総数 Age group tota	0～9歳 0-9 yrs		10～19歳 10-19 yrs		20～29歳 20-29 yrs		30～39歳 30-39 yrs		40～49歳 40-49 yrs		50～59歳 50-59 yrs		60～69歳 60-69 yrs		70～79歳 70-79 yrs		80歳以上 80 yrs+		
		数 n	割合(%)	数 n	割合(%)	数 n	割合(%)	数 n	割合(%)	数 n	割合(%)	数 n	割合(%)	数 n	割合(%)	数 n	割合(%)	数 n	割合(%)	
男女計 Total	2004	617 (2.1)		0 (0.0)		6 (1.8)		19 (0.8)		22 (0.8)		24 (1.0)		44 (1.1)		82 (1.8)		199 (2.9)		221 (3.6)
	2005	585 (2.1)		1 (1.3)		3 (0.9)		13 (0.6)		38 (1.4)		25 (1.1)		41 (1.1)		77 (1.8)		180 (2.8)		207 (3.2)
	2006	616 (2.3)		1 (1.9)		1 (0.4)		19 (0.9)		24 (1.0)		27 (1.3)		42 (1.3)		84 (2.2)		173 (2.8)		245 (3.9)
	2007	602 (2.4)		0 (0.0)		2 (0.9)		10 (0.5)		20 (0.9)		23 (1.2)		26 (0.9)		75 (2.0)		190 (3.4)		256 (4.0)
	2008	570 (2.3)		1 (1.4)		1 (0.5)		17 (0.9)		18 (0.8)		21 (1.1)		40 (1.4)		64 (1.7)		162 (2.9)		246 (3.7)
	2009	604 (2.5)		3 (6.4)		2 (0.9)		6 (0.4)		26 (1.2)		25 (1.4)		38 (1.5)		68 (1.9)		164 (3.2)		272 (3.9)
	2010	598 (2.6)		0 (0.0)		2 (0.7)		11 (0.7)		20 (1.0)		22 (1.2)		23 (1.1)		80 (2.2)		139 (2.8)		301 (4.4)
	2011	695 (3.1)		1 (1.9)		2 (1.1)		18 (1.3)		21 (1.2)		28 (1.5)		27 (1.3)		58 (1.8)		155 (3.2)		385 (5.3)
	2012	608 (2.9)		0 (0.0)		2 (1.1)		4 (0.3)		10 (0.7)		20 (1.3)		28 (1.6)		53 (1.8)		147 (3.2)		344 (4.8)
	2013	635 (3.1)		0 (0.0)		4 (2.1)		9 (0.8)		21 (1.6)		15 (1.0)		23 (1.4)		59 (2.1)		151 (3.5)		353 (4.8)
	2014	642 (3.3)		1 (3.1)		2 (1.1)		7 (0.6)		15 (1.2)		12 (0.8)		23 (1.5)		53 (2.0)		133 (3.3)		396 (5.4)
	2015	631 (3.5)		0 (0.0)		2 (1.1)		11 (1.0)		8 (0.7)		24 (1.8)		17 (1.3)		36 (1.5)		153 (4.1)		380 (5.4)
	2016	633 (3.6)		1 (2.7)		0 (0.0)		8 (0.6)		16 (1.6)		12 (1.0)		26 (2.0)		50 (2.3)		135 (4.0)		385 (5.5)
	2017	687 (4.1)		3 (7.3)		3 (1.8)		8 (0.6)		18 (1.8)		11 (0.9)		24 (1.9)		45 (2.2)		123 (3.9)		452 (6.7)
男 Males	2004	282 (1.5)		0 (0.0)		2 (1.3)		10 (0.8)		15 (0.9)		21 (1.3)		32 (1.1)		49 (1.5)		78 (1.7)		75 (2.1)
	2005	269 (1.5)		1 (2.2)		2 (1.2)		7 (0.6)		24 (1.5)		15 (1.0)		23 (0.8)		47 (1.5)		83 (2.0)		67 (1.8)
	2006	309 (1.8)		0 (0.0)		1 (0.9)		12 (1.1)		17 (1.3)		23 (1.6)		34 (1.3)		55 (2.0)		78 (1.9)		89 (2.4)
	2007	250 (1.5)		0 (0.0)		2 (1.8)		6 (0.6)		13 (1.0)		14 (1.1)		16 (0.7)		45 (1.7)		76 (2.0)		78 (2.0)
	2008	241 (1.5)		0 (0.0)		1 (0.9)		13 (1.4)		12 (1.0)		17 (1.4)		26 (1.3)		39 (1.5)		65 (1.8)		68 (1.8)
	2009	211 (1.4)		0 (0.0)		1 (1.0)		2 (0.2)		18 (1.6)		18 (1.5)		21 (1.2)		26 (1.0)		57 (1.7)		68 (1.7)
	2010	232 (1.6)		0 (0.0)		2 (1.3)		7 (0.8)		11 (1.1)		19 (1.6)		14 (0.9)		40 (1.5)		54 (1.7)		85 (2.1)
	2011	283 (2.0)		1 (4.2)		0 (0.0)		12 (1.6)		14 (1.6)		17 (1.5)		18 (1.2)		34 (1.5)		66 (2.1)		121 (2.9)
	2012	243 (1.9)		0 (0.0)		1 (1.0)		4 (0.6)		7 (0.8)		17 (1.7)		22 (1.7)		33 (1.6)		46 (1.6)		113 (2.8)
	2013	234 (1.9)		0 (0.0)		2 (2.0)		2 (0.3)		14 (2.0)		7 (0.8)		12 (1.0)		34 (1.7)		52 (1.8)		111 (2.7)
	2014	249 (2.1)		0 (0.0)		1 (1.1)		3 (0.5)		7 (1.0)		7 (0.8)		9 (0.9)		41 (2.2)		66 (2.5)		115 (2.8)
	2015	231 (2.1)		0 (0.0)		1 (1.1)		6 (1.0)		7 (1.2)		19 (2.3)		11 (1.2)		20 (1.2)		65 (2.6)		102 (2.7)
	2016	246 (2.3)		1 (4.8)		0 (0.0)		5 (0.7)		11 (2.0)		7 (0.9)		14 (1.6)		26 (1.6)		60 (2.7)		122 (3.2)
	2017	264 (2.6)		1 (3.8)		2 (1.9)		3 (0.4)		11 (2.1)		5 (0.7)		17 (1.9)		27 (1.9)		60 (2.8)		138 (3.7)
女 Females	2004	335 (3.2)		0 (0.0)		4 (2.2)		9 (0.7)		7 (0.6)		3 (0.4)		12 (1.2)		33 (2.4)		121 (5.3)		146 (5.5)
	2005	316 (3.1)		0 (0.0)		1 (0.6)		6 (0.5)		14 (1.3)		10 (1.5)		18 (2.0)		30 (2.5)		97 (4.5)		140 (5.3)
	2006	307 (3.3)		1 (4.0)		0 (0.0)		7 (0.7)		7 (0.7)		4 (0.6)		8 (1.0)		29 (2.8)		95 (4.6)		156 (6.1)
	2007	352 (3.9)		0 (0.0)		0 (0.0)		4 (0.4)		7 (0.7)		9 (1.4)		10 (1.4)		30 (2.9)		114 (5.9)		178 (6.7)
	2008	329 (3.6)		1 (3.3)		0 (0.0)		4 (0.4)		6 (0.6)		4 (0.6)		14 (2.0)		25 (2.4)		97 (5.2)		178 (6.4)
	2009	393 (4.3)		3 (10.7)		1 (0.8)		4 (0.5)		8 (0.8)		7 (1.0)		17 (2.3)		42 (4.2)		107 (5.9)		204 (6.7)
	2010	366 (4.2)		0 (0.0)		0 (0.0)		4 (0.6)		9 (1.0)		3 (0.5)		9 (1.5)		40 (4.0)		85 (4.9)		216 (7.3)
	2011	412 (4.7)		0 (0.0)		2 (2.0)		6 (0.9)		7 (0.8)		11 (1.7)		9 (1.5)		24 (2.5)		89 (5.2)		264 (8.5)
	2012	365 (4.4)		0 (0.0)		1 (1.2)		0 (0.0)		3 (0.4)		3 (0.5)		6 (1.2)		20 (2.3)		101 (6.1)		231 (7.1)
	2013	401 (5.0)		0 (0.0)		2 (2.2)		7 (1.2)		7 (1.2)		8 (1.4)		11 (2.1)		25 (3.0)		99 (6.4)		242 (7.4)
	2014	393 (5.2)		1 (6.3)		1 (1.1)		4 (0.7)		8 (1.4)		5 (0.9)		14 (2.8)		12 (1.6)		67 (4.9)		281 (8.7)
	2015	400 (5.6)		0 (0.0)		1 (1.2)		5 (1.0)		1 (0.2)		5 (1.0)		6 (1.4)		16 (2.5)		88 (6.8)		278 (8.8)
	2016	387 (5.5)		0 (0.0)		0 (0.0)		3 (0.6)		5 (1.1)		5 (1.0)		12 (2.9)		24 (3.8)		75 (6.4)		263 (8.1)
	2017	423 (6.4)		2 (13.3)		1 (1.6)		5 (0.9)		7 (1.5)		6 (1.3)		7 (1.8)		18 (3.1)		63 (5.9)		314 (10.4)

注1: 他結核病類との重複あり。 Note1: Cases having multiple organs are counted independently.

注2: 割合は各年齢階層新登録患者数に対する割合。 Note2: % indicate proportion out of the total number of newly notified tuberculosis cases for each age group.

【外国生れ】

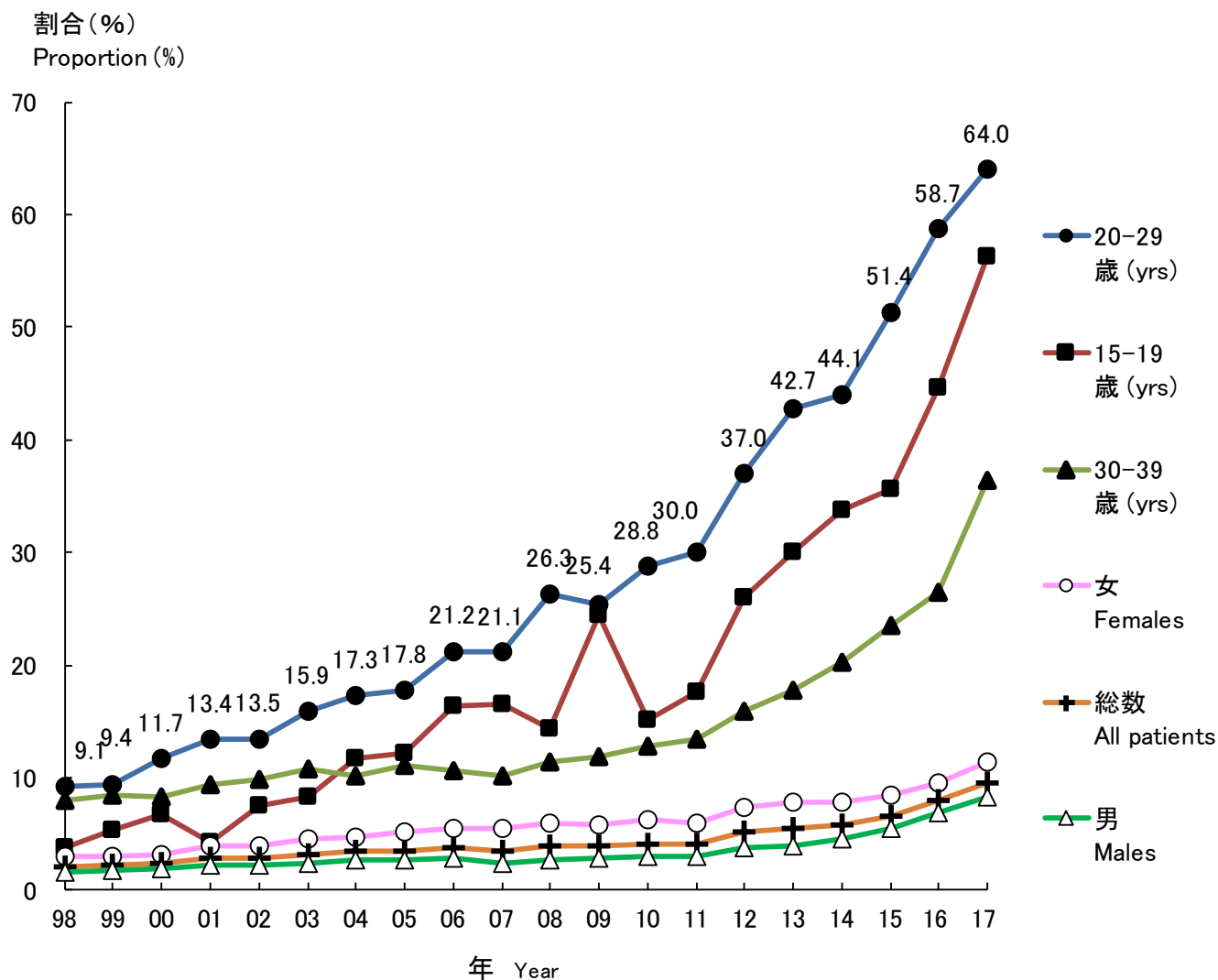


図 3 新登録結核患者に占める外国生まれ結核患者割合の推移, 性別・特定年齢階層別, 1998~2017年  
 Fig. 3 Annual trend of proportion of foreign-borns among newly notified tuberculosis patients, by sex and age group, from 1998 to 2017

割合: 国籍または出生国不明を除く。

Those whose country of birth is unknown are excluded from the numerator.

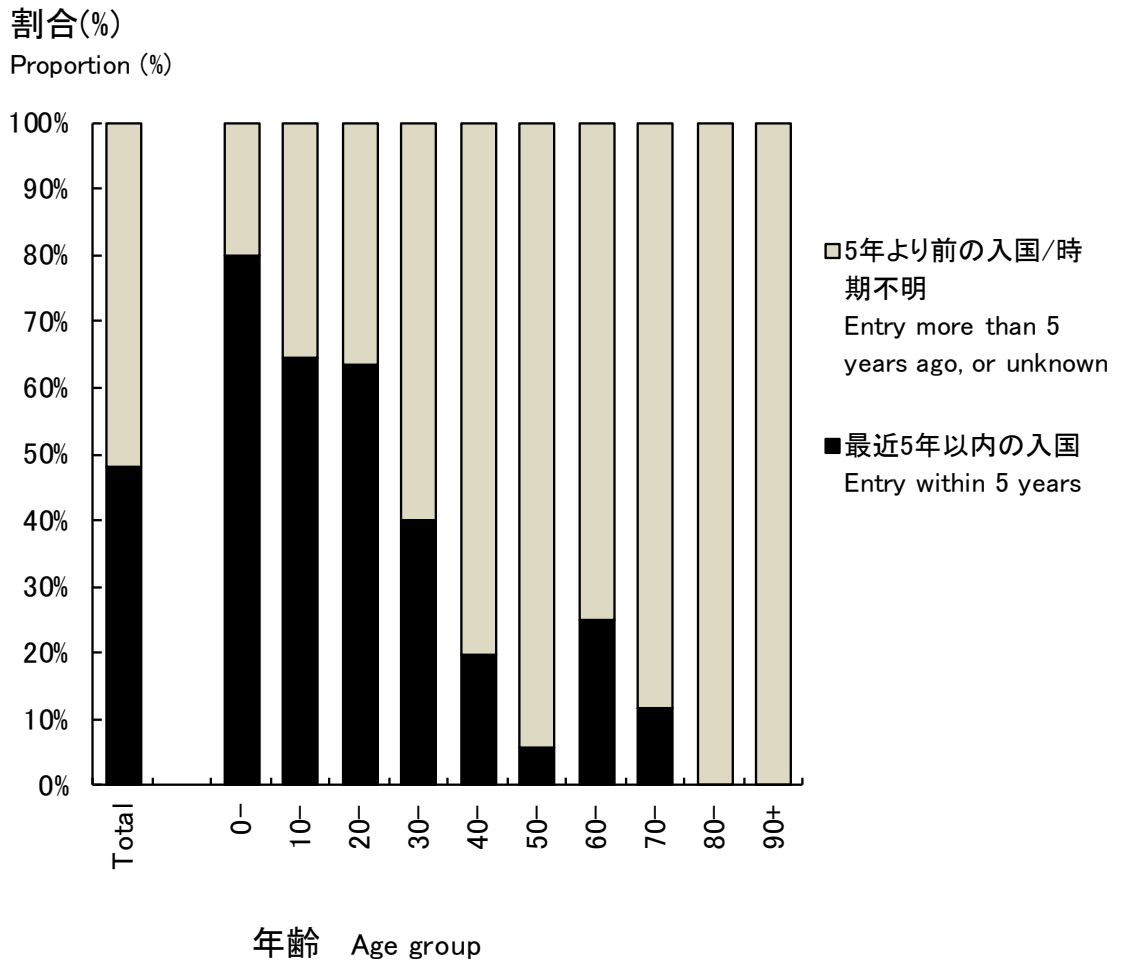


図 4 外国生まれ結核患者の入国時期別割合、年齢階層別、2017年

Fig. 4 Proportion of foreign-born tuberculosis patients, by age group and time of entry to Japan, in 2017

表4.1 新登録全結核患者の発生動向年次推移, 国籍または出生国別, 性別, 1998~2017年

Table 4.1 Annual trend of newly notified tuberculosis patients by nationality or country of birth, and by sex, from 1998 to 2017

暦年 Year	新登録全結核 患者数 Number of newly notified tuberculosis patients, all forms	日本生まれ Born in Japan	外国籍もしくは 外国生まれ Foreign nationalities or Foreign borns (*1)	国籍または 出生国不明 Nationalities or country of birth unknown	外国生まれ 割合 (%) Proportion of foreign borns (%)(*2)	性 Sex (*3)		女-男比 Ratio of Females to Males
						男 Males	女 Females	
1998	41,033	34,382	739	5,912	2.1	365	374	1.0
1999	43,818	37,094	821	5,903	2.2	415	406	1.0
2000	39,384	33,720	837	4,827	2.4	436	401	0.9
2001	35,489	30,305	866	4,318	2.8	442	424	1.0
2002	32,828	28,667	824	3,337	2.8	411	413	1.0
2003	31,638	27,665	906	3,067	3.2	433	473	1.1
2004	29,736	26,205	931	2,600	3.4	479	452	0.9
2005	28,319	25,247	923	2,149	3.5	438	485	1.1
2006	26,384	23,505	920	1,959	3.8	444	476	1.1
2007	25,311	23,451	842	1,018	3.5	364	478	1.3
2008	24,760	23,163	945	652	3.9	416	529	1.3
2009	24,170	22,808	938	424	4.0	414	524	1.3
2010	23,261	21,976	952	333	4.2	424	528	1.2
2011	22,681	21,372	921	388	4.1	416	505	1.2
2012	21,283	19,555	1,069	659	5.2	474	595	1.3
2013	20,495	18,589	1,064	842	5.4	468	596	1.3
2014	19,615	17,727	1,101	787	5.8	531	570	1.1
2015	18,280	16,396	1,164	720	6.6	581	583	1.0
2016	17,625	15,504	1,338	783	7.9	693	645	0.9
2017	16,789	14,533	1,530	726	9.5	804	726	0.9

\*1: 2011年までは外国籍結核患者数、2012年以降外国生まれ結核患者数。

Number of tuberculosis patients with foreign nationalities until 2011, number of foreign-born patients afterwards.

\*2: 2011年までは外国籍患者割合、2012年以降外国生まれ患者割合(国籍または出生国不明を除く)。

Proportion of Tuberculosis patients with foreign nationalities until 2011, proportion of foreign-born patients afterwards, excluding those of unknown nationality or country of birth.

\*3: 外国籍または外国生まれにおける性別。

Sex distribution among foreign nationalities or foreign-borns.



表4.2 新登録外国人結核患者数・割合、年齢階層別、1998～2017年

Table 4.2 Annual trend of foreign-borns by age group, 1998-2017

年 year	年齢 Age group	0～9歳 0-9 yrs		10～19歳 10-19 yrs		20～29歳 20-29 yrs		30～39歳 30-39 yrs		40～49歳 40-49 yrs		50～59歳 50-59 yrs		60～69歳 60-69 yrs		70～79歳 70-79 yrs		80歳以上 80 yrs+	
		総数 Total	数n 割合(%)	数n 割合(%)	数n 割合(%)	数n 割合(%)	数n 割合(%)	数n 割合(%)	数n 割合(%)	数n 割合(%)	数n 割合(%)	数n 割合(%)	数n 割合(%)	数n 割合(%)	数n 割合(%)	数n 割合(%)	数n 割合(%)	数n 割合(%)	
1998	739	6	(0.8)	20	(2.7)	300	(40.6)	215	(29.1)	83	(11.2)	44	(6.0)	23	(3.1)	29	(3.9)	19	(2.6)
1999	821	11	(1.3)	27	(3.3)	319	(38.9)	241	(29.4)	89	(10.8)	54	(6.6)	27	(3.3)	35	(4.3)	18	(2.2)
2000	837	14	(1.7)	26	(3.1)	357	(42.7)	235	(28.1)	92	(11.0)	49	(5.9)	23	(2.7)	27	(3.2)	14	(1.7)
2001	866	4	(0.5)	17	(2.0)	361	(41.7)	249	(28.8)	110	(12.7)	55	(6.4)	27	(3.1)	25	(2.9)	18	(2.1)
2002	824	5	(0.6)	24	(2.9)	345	(41.9)	249	(30.2)	81	(9.8)	47	(5.7)	26	(3.2)	24	(2.9)	23	(2.8)
2003	906	9	(1.0)	25	(2.8)	399	(44.0)	268	(29.6)	98	(10.8)	38	(4.2)	22	(2.4)	27	(3.0)	20	(2.2)
2004	931	4	(0.4)	32	(3.4)	402	(43.2)	250	(26.9)	107	(11.5)	59	(6.3)	28	(3.0)	27	(2.9)	22	(2.4)
2005	923	5	(0.5)	37	(4.0)	378	(41.0)	273	(29.6)	105	(11.4)	62	(6.7)	26	(2.8)	16	(1.7)	21	(2.3)
2006	920	5	(0.5)	34	(3.7)	409	(44.5)	234	(25.4)	113	(12.3)	59	(6.4)	35	(3.8)	11	(1.2)	20	(2.2)
2007	842	6	(0.7)	35	(4.2)	390	(46.3)	224	(26.6)	102	(12.1)	43	(5.1)	15	(1.8)	12	(1.4)	15	(1.8)
2008	945	4	(0.4)	27	(2.9)	468	(49.5)	237	(25.1)	114	(12.1)	41	(4.3)	25	(2.6)	10	(1.1)	19	(2.0)
2009	938	2	(0.2)	50	(5.3)	427	(45.5)	243	(25.9)	103	(11.0)	41	(4.4)	30	(3.2)	20	(2.1)	22	(2.3)
2010	952	5	(0.5)	41	(4.3)	438	(46.0)	242	(25.4)	114	(12.0)	39	(4.1)	35	(3.7)	18	(1.9)	20	(2.1)
2011	921	5	(0.5)	30	(3.3)	419	(45.5)	226	(24.5)	126	(13.7)	53	(5.8)	20	(2.2)	19	(2.1)	23	(2.5)
2012	1,069	4	(0.4)	45	(4.2)	468	(43.8)	237	(22.2)	181	(16.9)	63	(5.9)	33	(3.1)	17	(1.6)	21	(2.0)
2013	1,064	3	(0.3)	52	(4.9)	494	(46.4)	225	(21.1)	147	(13.8)	65	(6.1)	30	(2.8)	25	(2.3)	23	(2.2)
2014	1,101	5	(0.5)	59	(5.4)	511	(46.4)	243	(22.1)	151	(13.7)	71	(6.4)	26	(2.4)	16	(1.5)	19	(1.7)
2015	1,164	3	(0.3)	63	(5.4)	565	(48.5)	252	(21.6)	134	(11.5)	74	(6.4)	27	(2.3)	19	(1.6)	27	(2.3)
2016	1,338	5	(0.4)	89	(6.7)	712	(53.2)	258	(19.3)	139	(10.4)	66	(4.9)	33	(2.5)	15	(1.1)	21	(1.6)
2017	1,530	5	(0.3)	87	(5.7)	774	(50.6)	349	(22.8)	143	(9.3)	89	(5.8)	48	(3.1)	17	(1.1)	18	(1.2)

注1:割合は新登録外国人結核患者総数に対する各年齢階層患者数の割合

Note1: % indicate proportion out of the total number of newly notified foreign-born tuberculosis cases for each age group.

注2: 2011年までは外国国籍患者数。2012年以降は外国生まれ患者数

Note2: "Foreign nationalities" until 2011, "Foreign-born" since 2012.

表5 外国生まれ結核患者及び薬剤耐性結核の数および割合、出生国別、入国時期別 2017年  
Table 5 Number and proportion of foreign-born tuberculosis patients by country of birth and time of entry to Japan, 2017

総数 Total	薬剤耐性 Drug resistance						最近5年以内入国 Entry within 5 years						5年以上前入国/時期不明 Entry more than 5 years ago, or unknown																			
	n	(%)	多剤耐性 MDR	INH 耐性 INH resistance	Any RFP RFP resistance	1 剤以上耐性 Any resistance*	n	(%)	多剤耐性 MDR	INH 耐性 Any INH resistance	RFP耐性 RFP resistance	Any 1 剤以上耐性 Any resistance*	n	(%)	多剤耐性 MDR	INH 耐性 Any INH resistance	RFP耐性 RFP resistance	Any 1 剤以上耐性 Any resistance*														
総数 Total	1,530	(100.0)	27	(100.0)	81	(100.0)	36	(100.0)	142	(100.0)	総数 Total	738	(100.0)	16	(100.0)	45	(100.0)	21	(100.0)	76	(100.0)	総数 Total	792	(100.0)	11	(100.0)	36	(100.0)	15	(100.0)	66	(100.0)
フィリピン Philippines	321	(21.0)	5	(18.5)	10	(12.3)	7	(19.4)	17	(12.0)	ベトナム Vietnam	151	(20.5)	4	(25.0)	20	(44.4)	4	(19.0)	29	(38.2)	フィリピン Philippines	214	(27.0)	2	(18.2)	4	(11.1)	3		9	(13.6)
中国 China	258	(16.9)	6	(22.2)	18	(22.2)	9	(25.0)	32	(22.5)	中国 China	137	(18.6)	2	(12.5)	6	(13.3)	5	(23.8)	15	(19.7)	中国 China	121	(15.3)	4	(36.4)	12	(33.3)	4	(26.7)	17	(25.8)
ベトナム Vietnam	257	(16.8)	6	(22.2)	27	(33.3)	7	(19.4)	46	(32.4)	フィリピン Philippines	107	(14.5)	3	(18.8)	6	(13.3)	4	(19.0)	8	(10.5)	ベトナム Vietnam	106	(13.4)	2	(18.2)	7	(19.4)	3		17	(25.8)
ネパール Nepal	164	(10.7)			2	(2.5)			6	(4.2)	ネパール Nepal	93	(12.6)			1	(2.2)			2	(2.6)	ネパール Nepal	71	(9.0)			1	(2.8)			4	(6.1)
インドネシア Indonesia	121	(7.9)			3	(3.7)			5	(3.5)	インドネシア Indonesia	83	(11.2)			2	(4.4)			4	(5.3)	インドネシア Indonesia	38	(4.8)			1	(2.8)			1	(1.5)
ミャンマー Myanmar	80	(5.2)	5	(18.5)	7	(8.6)	6	(16.7)	10	(7.0)	ミャンマー Myanmar	52	(7.0)	3	(18.8)	3	(6.7)	4	(19.0)	6	(7.9)	韓国 Republic of Korea	38	(4.8)			3	(8.3)			4	(6.1)
韓国 Republic of Korea	46	(3.0)	1	(3.7)	4	(4.9)	1	(2.8)	5	(3.5)	モンゴル Mongolia	14	(1.9)			1	(2.2)			2	(2.6)	ミャンマー Myanmar	28	(3.5)	2	(18.2)	4	(11.1)	2		4	(6.1)
タイ Thailand	36	(2.4)							1	(0.7)	カンボジア Cambodia	13	(1.8)									タイ Thailand	24	(3.0)							1	(1.5)
インド India	28	(1.8)			1	(1.2)			1	(0.7)	タイ Thailand	12	(1.6)									インド India	18	(2.3)								
カンボジア Cambodia	20	(1.3)			1	(1.2)			1	(0.7)	インド India	10	(1.4)			1	(2.2)			1	(1.3)	ブラジル Brazil	15	(1.9)								
モンゴル Mongolia	19	(1.2)			1	(1.2)			2	(1.4)	その他 Others	49	(6.6)	4	(25.0)	5	(11.1)	4	(19.0)	7	(9.2)	ペルー Peru	10	(1.3)								
ブラジル Brazil	17	(1.1)							1	(0.7)	その他 Others	17	(2.3)							2	(2.6)	その他 Others	48	(6.1)	1	(9.1)	2	(5.6)	2	(13.3)	4	(6.1)
ペルー Peru	12	(0.8)									国名不明 Unknown	17	(2.3)							2	(2.6)	国名不明 Unknown	61	(7.7)			2	(5.6)	1	(6.7)	5	(7.6)
バングラデシュ Bangladesh	11	(0.7)																														
その他 Others	62	(4.1)	4	(14.8)	5	(6.2)	5	(13.9)	8	(5.6)																						
国名不明 Unknown	78	(5.1)			2	(2.5)	1	(2.8)	7	(4.9)																						

国名: 10名以上患者発生届けのあった国名を掲載 Only those countries with more than ten tuberculosis cases are listed.

MDR: Multi-drug resistant, i.e., resistant to at least INH and RFP INH: isoniazid RFP: rifampicin

\*: INH, RFP, SM EBの4剤のうちのいずれかに耐性 resistant to either INH, RFP, SM, or EB

表6 職業分類別外国生まれ結核患者数、性別・年齢階層別、2017年  
Table 6 Occupation of foreign-born tuberculosis patients by sex and age group, in Japan, in 2017

年齢 Age group	総数 Total	接客業 Service trade workers	医療職 Health care workers	教員・ 保育士 Teacher s/ Nursery staff	乳幼児 ・児童 Infants / Children	生徒・ 学生 Student s	他常用 労働 者 Other regular employee s	他臨時 雇 ・日雇 Other temporar y/day laborer	他自営・ 自由業 Other self- employe d	家事 従業者 Houseke epers	無職・ その他 Unemplo -yed/ Others	不明 Unknow n
	(%)	(%)	(%)	(%)	(%)	(%)	(%)	(%)	(%)	(%)	(%)	(%)
総数 Total	1,530	62 (4)	40 (3)	7 (0)	12 (1)	455 (30)	466 (30)	126 (8)	28 (2)	28 (2)	245 (16)	61 (4)
男 Males	804	20 (2)	12 (1)	5 (1)	5 (1)	284 (35)	265 (33)	57 (7)	18 (2)	1 (0)	109 (14)	28 (3)
女 Females	726	42 (6)	28 (4)	2 (0)	7 (1)	171 (24)	201 (28)	69 (10)	10 (1)	27 (4)	136 (19)	33 (5)
0-14	11	—	—	—	10 (91)	—	—	—	—	—	—	—
15-19	81	1 (1)	1 (1)	—	2 (2)	59 (73)	6 (7)	3 (4)	—	2 (2)	6 (7)	1 (1)
20-24	422	7 (2)	7 (2)	—	—	237 (56)	105 (25)	23 (5)	1 (0)	1 (0)	24 (6)	15 (4)
25-29	352	9 (3)	8 (2)	1 (0)	—	115 (33)	133 (38)	29 (8)	1 (0)	4 (1)	44 (13)	8 (2)
30-34	213	16 (8)	7 (3)	3 (1)	—	31 (15)	77 (36)	22 (10)	2 (1)	7 (3)	36 (17)	12 (6)
35-39	136	11 (8)	3 (2)	1 (1)	—	11 (8)	50 (37)	20 (15)	9 (7)	5 (4)	20 (15)	6 (4)
40-44	83	7 (8)	7 (8)	2 (2)	—	1 (1)	38 (46)	11 (13)	1 (1)	1 (1)	13 (16)	2 (2)
45-49	60	5 (8)	2 (3)	—	—	—	23 (38)	5 (8)	2 (3)	4 (7)	16 (27)	3 (5)
50-54	54	4 (7)	2 (4)	—	—	—	17 (31)	7 (13)	3 (6)	2 (4)	13 (24)	5 (9)
55-59	35	2 (6)	1 (3)	—	—	—	9 (26)	3 (9)	3 (9)	2 (6)	11 (31)	4 (11)
60+	83	—	2 (2)	—	—	—	8 (10)	3 (4)	—	—	61 (73)	5 (6)

旧表 外国人新登録結核患者の発生動向, 暦年別, 年齢階層別, 1998~2017年  
 Previous table Trend of newly notified foreign nationals with TB by year and age group, 1998-2017

暦年 Year	外国人 All foreigners	年齢 Age group							20歳代 割合(%) Percentage of 20-29 yrs in total
		0-14	15-19	20-29	30-39	40-49	50-59	60+	
1998	739	11	15	300	215	83	44	71	40.6
1999	821	13	25	319	241	89	54	80	38.9
2000	837	16	24	357	235	92	49	64	42.7
2001	866	6	15	361	249	110	55	70	41.7
2002	824	6	23	345	249	81	47	73	41.9
2003	906	12	22	399	268	98	38	69	44.0
2004	931	6	30	402	250	107	59	77	43.2
2005	923	9	33	378	273	105	62	63	41.0
2006	920	6	33	409	234	113	59	66	44.5
2007	842	9	32	390	224	102	43	42	46.3
2008	945	5	26	468	237	114	41	54	49.5
2009	938	3	49	427	243	103	41	72	45.5
2010	952	9	37	438	242	114	39	73	46.0
2011	921	8	27	419	226	126	53	62	45.5
2012	1069	7	42	468	237	181	63	71	43.8
2013	1064	7	48	494	225	147	65	78	46.4
2014	1101	8	56	511	243	151	71	61	46.4
2015	1164	9	57	565	252	134	74	73	48.5
2016	1338	12	82	712	258	139	66	69	53.2
2017	1530	11	81	774	349	143	89	83	50.6

2011年までは外国籍結核患者数、2012年以降外国生まれ結核患者数

Number of tuberculosis patients with foreign nationalities until 2011, number of foreign-born patients afterwards.

旧表 都道府県・政令指定都市別外国人結核患者数, 2017年  
Previous table Distribution of foreign nationals with tuberculosis by prefecture and designated city, 2017

		新登録患者数 Newly notified patients	外国生まれ Foreign born	割合 Proportion (%)
全国	Japan	16,789	1530	9.1
仙台市	Sendai city	98	22	22.4
福岡市	Fukuoka city	191	36	18.8
岡山市	Okayama city	80	14	17.5
群馬県	Gunma	184	31	16.8
浜松市	Hamamatsu city	88	14	15.9
東京都	Tokyo	2,213	341	15.4
愛知県	Aichi	655	96	14.7
名古屋市	Nagoya city	419	61	14.6
相模原市	Sagamihara city	70	10	14.3
岐阜県	Gifu	313	44	14.1
香川県	Kagawa	139	18	12.9
茨城県	Ibaraki	323	41	12.7
静岡県	Shizuoka	240	30	12.5
栃木県	Tochigi	228	28	12.3
広島県	Hiroshima	212	25	11.8
宮城県	Miyagi	69	8	11.6
三重県	Mie	219	25	11.4
長野県	Nagano	168	19	11.3
千葉市	Chiba city	128	14	10.9
福島県	Fukushima	138	15	10.9
滋賀県	Shiga	166	18	10.8
埼玉県	Saitama	757	82	10.8
神奈川県	Kanagawa	347	37	10.7
静岡市	Shizuoka city	96	9	9.4
岡山県	Okayama	132	12	9.1
福井県	Fukui	90	8	8.9
石川県	Ishikawa	138	12	8.7
千葉県	Chiba	629	54	8.6
富山県	Toyama	118	10	8.5
神戸市	Kobe city	302	25	8.3
広島市	Hiroshima city	109	9	8.3
横浜市	Yokohama city	509	41	8.1
さいたま市	Saitama city	174	14	8.0
新潟県	Niigata	113	9	8.0
愛媛県	Ehime	147	11	7.5
沖縄県	Okinawa	226	16	7.1
川崎市	Kawasaki city	217	15	6.9
福岡県	Fukuoka	336	23	6.8
大阪市	Osaka city	880	53	6.0
京都市	Kyoto city	235	14	6.0
山梨県	Yamanashi	68	4	5.9
山口県	Ymaguchi	171	10	5.8
熊本県	Kumamoto	157	9	5.7

外国人患者が5.5%以上(国籍不明を含む)の県・市を掲載。政令指定都市は県に含まず(別掲) □  
Those prefectures and designated cities with 5% or more tuberculosis cases with foreign nationals are listed. □

The figures of prefectures do not include those cases registered to designated cities in the respective prefecture, if applicable. □

E.g., the figure of Kanagawa prefecture does not include those of Yokohama and Kawasaki cities.