

【患者発見】

表1 新登録結核患者の発見方法、2007～2017年
Table1 Proportion of mode of detection among newly notified tuberculosis patients, 2007-2017

年 Year	新登録患者 Newly notified TB patients		個別健診 Individual medical checkup		定期健診 Mass screening						接触者健診 Contact examination				医療機関 Medical institutions						その他 Others		不明 Unknown					
	n	%	n	%	学校 Schools		住民 Residents		職場 Employees		施設 Facilities		家族 Family		その他 Others		有症状受診(*1) Outpatients with TB symptoms(*1)		入院中 Inpatients with other diseases		通院中 Outpatients with other diseases		n	%	n	%		
					n	%	n	%	n	%	n	%	n	%	n	%	n	%	n	%								
2007	25,311		537	2.1	217	0.9	636	2.5	1,931	7.6	145	0.6	355	1.4	370	1.5	16,997	67.2	2,031	8.0	1,611	6.4	340	1.3	141	0.6		
2008	24,760		639	2.6	195	0.8	486	2.0	1,877	7.6	144	0.6	325	1.3	410	1.7	15,347	62.0	2,681	10.8	2,100	8.5	316	1.3	240	1.0		
2009	24,170		611	2.5	197	0.8	550	2.3	1,749	7.2	136	0.6	324	1.3	311	1.3	14,864	61.5	2,752	11.4	2,220	9.2	301	1.2	155	0.6		
2010	23,261		507	2.2	244	1.0	544	2.3	1,618	7.0	128	0.6	313	1.3	350	1.5	13,901	59.8	2,792	12.0	2,305	9.9	333	1.4	226	1.0		
2011	22,681		470	2.1	188	0.8	497	2.2	1,531	6.8	126	0.6	354	1.6	482	2.1	13,177	58.1	2,916	12.9	2,515	11.1	330	1.5	95	0.4		
2012	21,283		409	1.9	163	0.8	498	2.3	1,424	6.7	121	0.6	315	1.5	374	1.8	12,284	57.7	2,941	13.8	2,312	10.9	357	1.7	85	0.4		
2013	20,495		413	2.0	172	0.8	455	2.2	1,246	6.1	89	0.4	314	1.5	333	1.6	11,978	58.4	2,745	13.4	2,306	11.3	336	1.6	108	0.5		
2014	19,615		344	1.8	201	1.0	404	2.1	1,221	6.2	92	0.5	303	1.5	333	1.7	11,441	58.3	2,591	13.2	2,210	11.3	328	1.7	147	0.7		
2015	18,280		319	1.7	192	1.1	359	2.0	1,147	6.3	78	0.4	248	1.4	263	1.4	10,556	57.7	2,630	14.4	2,043	11.2	144	0.8	127	0.7		
2016	17,625		319	1.8	250	1.4	355	2.0	1,056	6.0	98	0.6	211	1.2	409	2.3	10,073	57.2	2,471	14.0	1,971	11.2	146	0.8	98	0.6		
2017	16,789		331	2.0	259	1.5	336	2.0	1,088	6.5	70	0.4	256	1.5	323	1.9	9,338	55.6	2,528	15.1	1,900	11.3	150	0.9	73	0.4		
2017年 Age group																												
0～9	41		1	2.4	1	2.4	0	0.0	0	0.0	0	0.0	23	56.1	3	7.3	11	26.8	2	4.9	0	0.0	0	0.0	0	0.0	0	0.0
10～19	166		9	5.4	45	27.1	0	0.0	9	5.4	0	0.0	24	14.5	10	6.0	61	36.7	1	0.6	2	1.2	1	0.6	1	0.6	1	0.6
20～29	1,231		36	2.9	191	15.5	1	0.1	233	18.9	1	0.1	19	1.5	76	6.2	595	48.3	17	1.4	13	1.1	9	0.7	5	0.4	5	0.4
30～39	987		30	3.0	18	1.8	5	0.5	209	21.2	0	0.0	24	2.4	45	4.6	575	58.3	22	2.2	34	3.4	7	0.7	4	0.4	4	0.4
40～49	1,159		46	4.0	3	0.3	22	1.9	258	22.3	6	0.5	32	2.8	44	3.8	614	53.0	35	3.0	73	6.3	7	0.6	5	0.4	5	0.4
50～59	1,268		35	2.8	0	0.0	21	1.7	214	16.9	9	0.7	34	2.7	44	3.5	673	53.1	82	6.5	117	9.2	18	1.4	5	0.4	5	0.4
60～69	2,024		46	2.3	0	0.0	65	3.2	137	6.8	7	0.3	41	2.0	39	1.9	1,087	53.7	241	11.9	306	15.1	29	1.4	10	0.5	10	0.5
70～79	3,187		56	1.8	0	0.0	111	3.5	27	0.8	10	0.3	29	0.9	26	0.8	1,730	54.3	569	17.9	565	17.7	36	1.1	14	0.4	14	0.4
80～89	4,822		51	1.1	1	0.0	94	1.9	1	0.0	28	0.6	28	0.6	25	0.5	2,819	58.5	1,062	22.0	639	13.3	36	0.7	21	0.4	21	0.4
90～	1,904		21	1.1	0	0.0	17	0.9	0	0.0	9	0.5	2	0.1	11	0.6	1,173	61.6	497	26.1	151	7.9	7	0.4	8	0.4	8	0.4

TB: tuberculosis

*1 有症状:咳・痰・血痰・喀血等の「呼吸器症状」や、喘鳴、胸痛、背部痛、息切れ、発熱、寝汗、全身倦怠、体重減少等の「その他の症状」を有する場合。

TB symptoms: Respiratory symptoms such as cough, sputum expectoration, bloody sputum, and hemoptysis; and other symptoms such as wheezing, chest pain, back pain, dyspnea, fever, night sweating, fatigue tendency, and weight loss. Total number: 68 cases of group examination, 69 cases of health diagnosis.

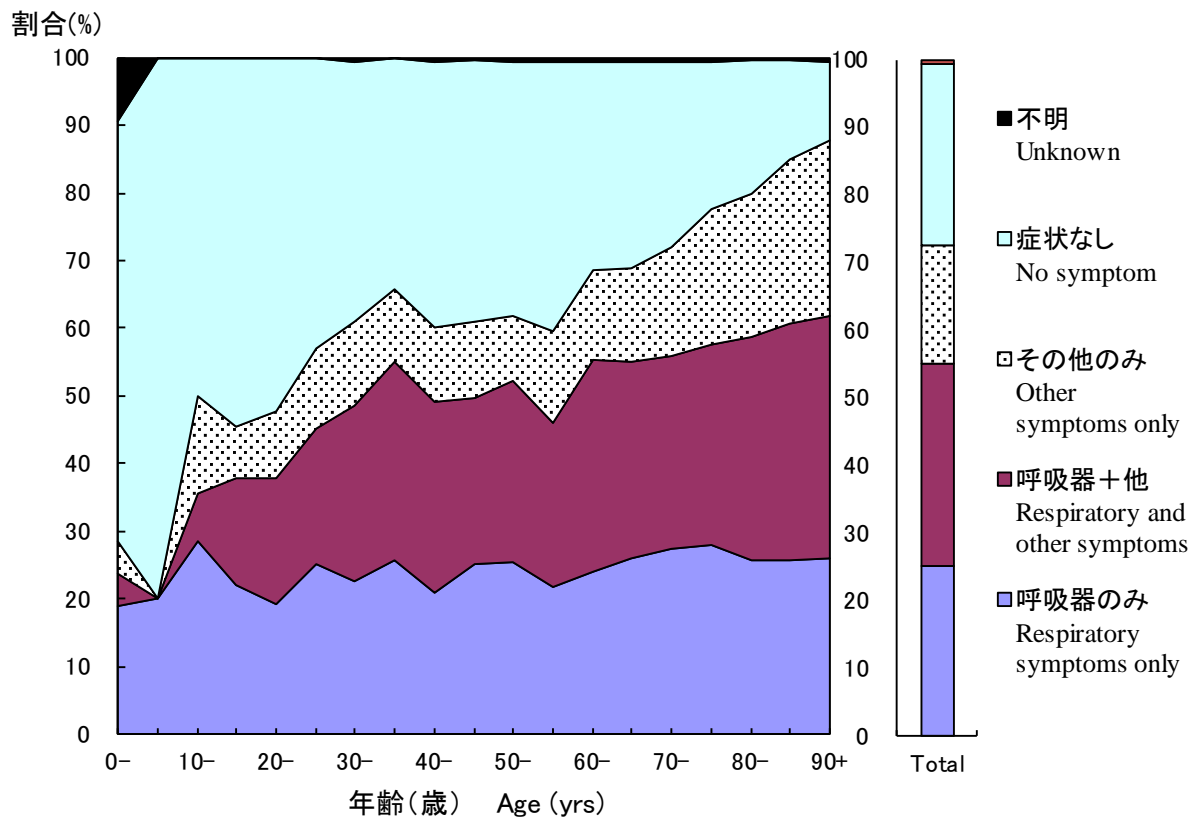


図1 新登録肺結核中 年齢5歳階層別症状の有無、2017年

Fig.1 Proportion of symptoms among newly notified pulmonary tuberculosis patients by 5- years age group, in 2017

呼吸器症状は咳、痰、血痰、喀血を含む。その他の症状は喘鳴、胸痛、背部痛、息切れ、発熱、寝汗、全身倦怠、体重減少を含む。

Respiratory symptoms include cough, sputum expectoration, bloody sputum, and hemoptysis. Other symptoms include wheezing, chest pain, back pain, dyspnea, fever, night sweating, fatigue tendency, and weight loss.

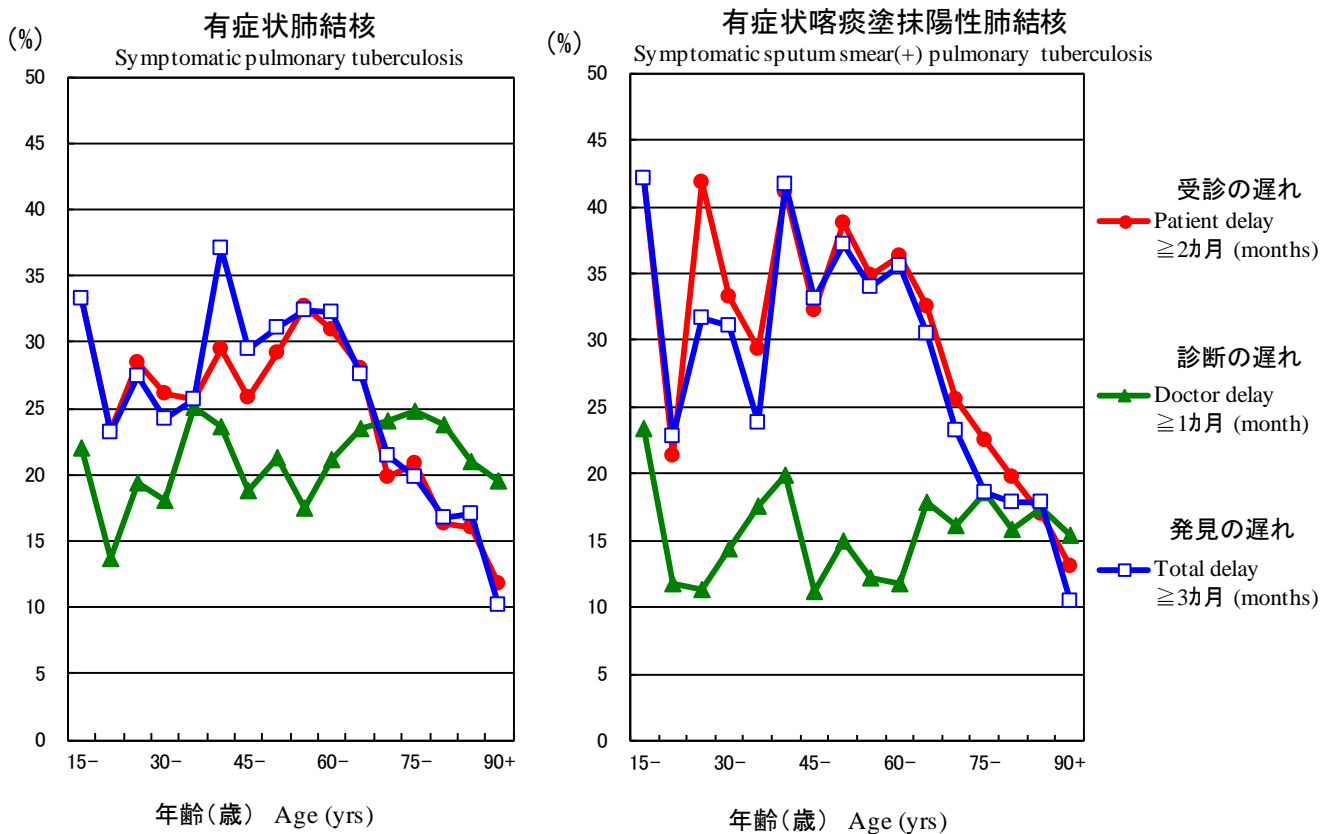


図2 新登録有症状肺結核中年齢5歳階層別発見の遅れの割合、2017年

Fig.2 Proportion of patient delay, doctor delay and total delay among symptomatic pulmonary tuberculosis patients by 5-year age group, in 2017

受診の遅れ:「発病の時期」(結核の症状が初めて自覚された時期)から「初診の時期」(結核による症状を訴えて初めて医療機関を受診した時期)までの期間が2カ月以上である場合。

Patient delay: time interval from the onset of symptoms to the first visit to a medical institution of 2 months or longer

診断の遅れ:「初診の時期」から「診断の時期」(結核と診断された時期)までの期間が1カ月以上である場合。

Doctor delay: time interval from the first visit to a medical institution to the diagnosis of tuberculosis of 1 month or longer

発見の遅れ:「発病の時期」から「診断の時期」までの期間が3カ月以上である場合。

Total delay: time interval from the onset of symptoms to the diagnosis of tuberculosis is 3 months or longer

旧表 新登録結核患者の発見方法、年齢階層別、2017年
Previous table Proportion of mode of detection among newly notified TB patients by age group, 2017

年齢階層 Age groups	新登録患者 Newly notified TB patients	個別健診 Individual medical checkup	定期健診 Mass screening				接触者健診 Contact examination		医療機関 Medical institutions			その他 Others	不明 Unknown
			学校 Schools	住民 Residents	職場 Employees	施設 Facilities	家族 Family	その他 Others	有症状受診 Outpatients with TB symptoms (*1)	入院中 Inpatients with other diseases	通院中 Outpatients with other diseases		
全結核 All forms of TB	n	%	%	%	%	%	%	%	%	%	%	%	%
総数 Total	16,789	2.0	1.5	2.0	6.5	0.4	1.5	1.9	55.6	15.1	11.3	0.9	0.4
0-14	59	3.4	5.1	0.0	0.0	0.0	47.5	8.5	30.5	3.4	1.7	0.0	0.0
15-19	148	5.4	29.1	0.0	6.1	0.0	12.8	5.4	36.5	0.7	0.7	0.7	0.7
20-24	609	3.1	23.8	0.2	17.1	0.0	1.3	7.1	40.2	1.1	1.1	0.8	0.5
25-29	622	2.7	7.4	0.0	20.7	0.2	1.8	5.3	56.3	1.6	1.0	0.6	0.3
30-34	505	3.2	3.0	0.2	21.0	0.0	1.8	5.3	56.4	2.4	3.8	1.0	0.4
35-39	482	2.9	0.6	0.8	21.4	0.0	3.1	3.7	60.2	2.1	3.1	0.4	0.4
40-44	525	3.0	0.6	2.5	24.2	0.0	2.9	3.8	53.5	3.0	4.8	0.8	0.4
45-49	634	4.7	0.0	1.4	20.7	0.9	2.7	3.8	52.5	3.0	7.6	0.5	0.5
50-54	612	2.8	0.0	1.5	19.6	0.7	2.3	3.8	53.4	6.7	6.9	1.0	0.2
55-59	656	2.7	0.0	1.8	14.3	0.8	3.0	3.2	52.7	6.3	11.4	1.8	0.6
60-64	741	2.4	0.0	2.3	10.3	0.5	2.6	2.7	54.3	9.9	12.3	1.3	0.5
65-69	1,283	2.2	0.0	3.7	4.8	0.2	1.7	1.5	53.4	13.1	16.8	1.5	0.5
70-74	1,353	1.8	0.0	4.1	1.6	0.4	1.4	0.9	52.8	15.6	19.3	1.0	0.5
75-79	1,834	1.7	0.0	3.1	0.3	0.3	0.5	0.8	55.4	19.5	16.6	1.2	0.4
80-84	2,408	1.1	0.0	2.7	0.0	0.5	0.7	0.6	56.5	21.0	15.4	0.7	0.3
85-89	2,414	1.0	0.0	1.2	0.0	0.7	0.4	0.4	60.4	23.1	11.1	0.7	0.5
90+	1,904	1.1	0.0	0.9	0.0	0.5	0.1	0.6	61.6	26.1	7.9	0.4	0.4
(再掲) 喀痰塗抹陽性肺結核 (Re-count) Sputum smear positive pulmonary TB													
総数 Total	6,359	1.3	0.7	1.6	4.2	0.4	0.6	0.6	63.6	15.4	10.0	0.6	0.3
0-14	4	0.0	0.0	0.0	0.0	0.0	25.0	0.0	50.0	25.0	0.0	0.0	0.0
15-19	40	2.5	32.5	0.0	5.0	0.0	5.0	0.0	47.5	2.5	2.5	0.0	0.0
20-24	137	2.9	18.2	0.0	19.0	0.0	1.5	1.5	54.0	0.7	1.5	0.0	0.0
25-29	152	2.0	2.0	0.0	11.2	0.0	1.3	1.3	79.6	0.7	1.3	0.0	0.0
30-34	137	1.5	0.7	0.0	15.3	0.0	0.7	0.7	73.0	1.5	4.4	0.7	0.0
35-39	168	2.4	0.0	0.0	13.7	0.0	1.8	1.2	72.6	3.6	3.0	0.6	0.6
40-44	161	0.6	0.6	1.9	19.3	0.0	0.6	0.6	68.9	0.6	3.7	1.9	0.6
45-49	210	3.3	0.0	1.9	18.6	0.5	1.4	1.9	64.8	1.9	3.8	0.5	0.5
50-54	213	2.8	0.0	1.4	13.6	0.9	1.9	1.4	61.0	8.5	5.2	1.9	0.0
55-59	236	1.3	0.0	1.7	12.7	0.8	0.8	0.4	65.7	3.0	9.3	1.7	0.8
60-64	319	1.6	0.0	1.3	7.5	0.6	1.6	1.3	64.6	8.8	10.3	1.3	0.3
65-69	485	2.1	0.0	2.7	3.7	0.2	0.8	0.6	60.6	14.0	12.2	2.1	0.2
70-74	498	1.2	0.0	2.4	1.4	0.4	0.4	0.4	60.6	15.7	15.9	0.2	0.6
75-79	740	1.4	0.0	2.4	0.4	0.4	0.0	0.3	61.2	20.3	12.7	0.5	0.3
80-84	983	0.7	0.0	2.2	0.0	0.2	0.2	0.3	62.3	19.7	13.5	0.2	0.3
85-89	1,012	0.7	0.1	1.0	0.0	0.6	0.1	0.4	64.4	21.0	10.9	0.2	0.2
90+	864	1.0	0.0	1.0	0.0	0.7	0.0	0.3	64.6	24.2	7.3	0.2	0.5

TB: tuberculosis

*1 有症状: 咳・痰・血痰・喀血等の「呼吸器症状」や、喘鳴、胸痛、背部痛、息切れ、発熱、寝汗、全身倦怠、体重減少等の「その他の症状」を有する場合。

TB symptoms: Respiratory symptoms such as cough, sputum expectoration, bloody sputum, and hemoptysis; and other symptoms such as wheezing, chest pain, back pain, dyspnea, fever, night sweating, fatigue tendency, and weight loss.

旧表改訂 新登録結核患者数、職業・性・年齢階層別、2017年
Previous table Number of newly notified TB patients by occupation, sex and age group, 2017

性/年齢	総数	接客業	看護師 /保健師	医師	他医療 従事者	教員/ 保育士	生徒/ 学生	他常用 勤労者	他臨時 /日雇	他自営/ 自由業	家事従 事者	保育園児/ 幼稚園児/ 他の乳幼児	無職/ 他	不明
Sex/Age group	Total	Service workers	Nurses/P ublic health nurses	Medical doctors	Other medical workers	Teachers/ nurses	Pupils/St udents	Other regular workers	Other temporar y/daily workers	Other self- employed	Housekee pers	Infants/ Little children	Jobless/ Others	Unknown
男 Male	10,171	237	16	33	81	34	366	1,801	326	536	9	20	6,450	262
0-14	33	-	-	-	-	-	11	-	-	-	-	20	2	-
15-19	96	1	-	-	1	-	80	4	3	-	1	-	6	-
20-24	343	13	3	-	6	-	174	96	20	3	-	-	17	11
25-29	334	19	2	4	7	2	72	165	23	2	-	-	31	7
30-39	514	41	5	5	25	6	25	266	20	40	-	-	60	21
40-49	709	27	4	4	17	9	2	407	39	58	-	-	121	21
50-59	877	38	1	6	12	13	1	437	50	92	1	-	195	31
60-69	1,451	56	1	4	9	3	1	332	100	119	-	-	763	63
70-79	2,119	34	-	5	3	-	0	78	60	136	1	-	1,748	54
80+	3,695	8	-	5	1	1	0	16	11	86	6	-	3,507	54
女 Female	6,618	200	200	5	199	48	241	554	194	95	227	11	4,497	147
0-14	26	-	-	-	-	-	13	-	-	-	-	11	2	-
15-19	52	4	-	-	2	-	39	2	-	-	1	-	3	1
20-24	266	17	18	-	10	6	117	63	7	1	1	-	16	10
25-29	288	30	23	-	16	4	47	91	19	2	6	-	39	11
30-39	473	50	54	1	39	10	22	127	44	8	31	-	74	13
40-49	450	39	50	2	49	12	2	117	40	11	35	-	69	24
50-59	391	25	42	1	49	10	0	84	24	18	33	-	83	22
60-69	573	22	13	-	25	6	0	57	37	19	42	-	338	14
70-79	1,068	11	-	1	8	-	1	10	20	28	48	-	921	20
80+	3,031	2	-	-	1	-	0	3	3	8	30	-	2,952	32

旧表 職業別、20～59歳新登録肺結核患者の発見方法別割合、2017年
Previous table Proportion of mode of detection among newly notified pulmonary TB patients aged 20-59 years by occupation, 2017

	肺結核 Pulmonary TB patients	個別健 診 Individual medical checkup	定期健診 Mass screening			接触者健診 Contact examination		医療機関 Clinics/Hospitals			その他/ 不明 Others/Un known
			住民 Residents	職場 Employe es	学校/施 設 Schools/F acilities	家族 Family	その他 Others	有症状 受診(*2) Outpatient s with TB symptoms	入院中 with other diseases	通院中 with other diseases	
総数 Total	3,919	3.5	1.2	23.3	5.8	2.7	5.2	47.4	3.0	4.7	3.3
接客業 Service workers	264	3.6	1.2	22.7	0.8	2.4	3.6	58.3	2.4	3.2	1.6
医療関係者 Medical workers(*1)	321	2.1	0.0	35.9	0.8	1.9	15.5	38.1	1.9	1.6	2.1
教員・保育士 Teachers/ Nursery nurses	45	5.8	0.0	46.2	0.0	1.9	1.9	36.5	0.0	5.8	1.9
学生 Students	406	3.6	0.0	1.8	50.1	0.8	7.4	28.2	0.5	0.5	7.1
他の常用勤労者 Other regular workers	1,571	3.1	0.8	37.3	0.5	2.7	4.2	42.3	2.1	5.1	1.8
他の臨時・日雇 Other temporary/ daily workers	295	2.2	1.3	19.9	0.0	4.8	3.5	59.7	3.5	3.0	2.2
他の自営自由業 Other self-employed	151	4.7	2.6	6.8	0.5	3.7	1.6	61.1	3.7	10.5	4.7
家事 Housekeepers	103	7.1	9.5	4.8	0.0	4.8	1.2	57.1	6.0	8.3	1.2
無職 Jobless/ Others	648	4.0	2.4	0.6	1.8	3.8	3.0	62.8	7.9	8.1	5.5
不明 Unknown	115	5.9	0.5	13.6	0.9	1.8	3.6	59.5	3.6	4.1	6.4

*1 医療関係者：看護師・保健師・助産師、医師、その他医療職含む。

Medical workers include nurses, public health nurses, medical doctors and dentists, physical therapists, occupational therapists, medical technologists, radiographers, and co-medicals.

*2 有症状：咳・痰・血痰・喀血等の「呼吸器症状」や、喘鳴、胸痛、背部痛、息切れ、発熱、寝汗、全身倦怠、体重減少等の「その他の症状」を有する場合。
TB symptoms: Respiratory symptoms such as cough, sputum expectoration, bloody sputum, and hemoptysis; and other symptoms such as wheezing, chest pain, back pain, dyspnea, fever, night sweating, fatigue tendency, and weight loss.

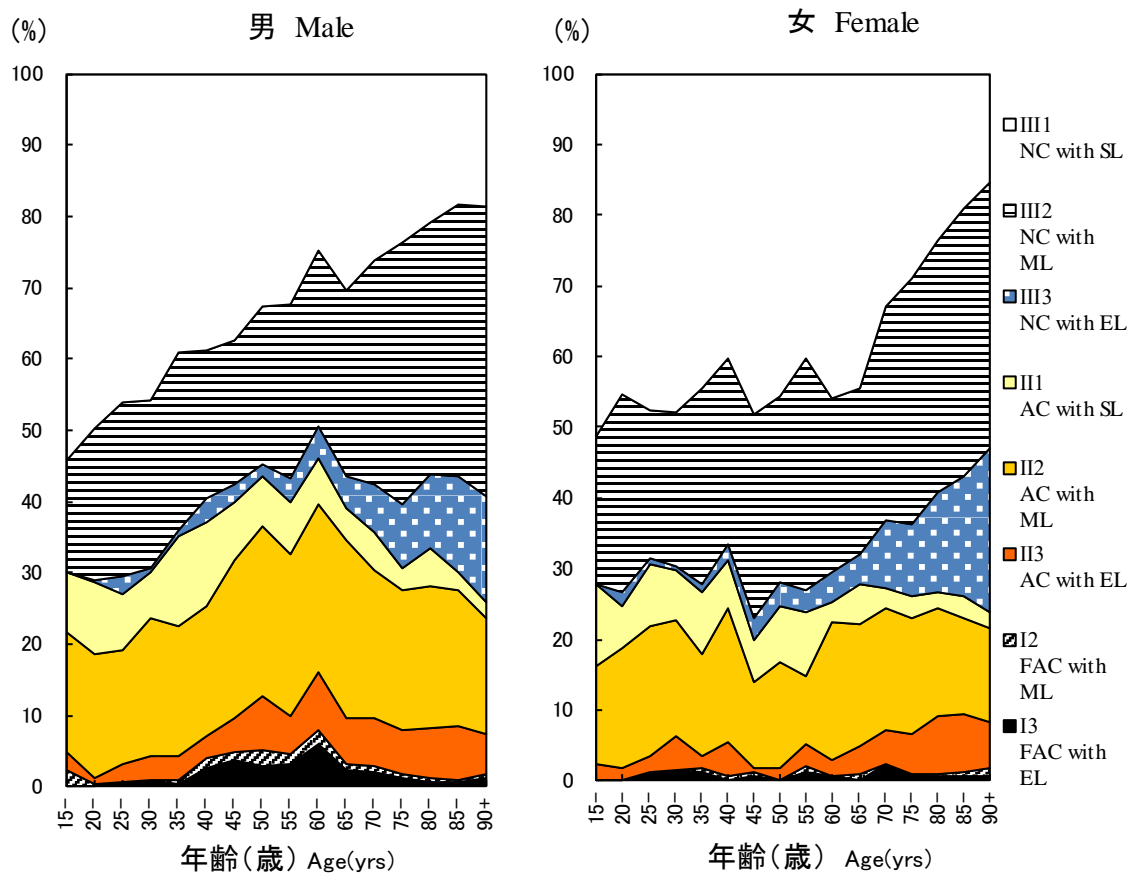


図3 新登録肺結核患者中胸部X線写真学会分類別所見割合、性・年齢5歳階級別、2017年
 Fig.3 Proportion of cases classified by X-ray classification by sex and 5-yearage group, 2017
 NC : Non-cavitory SL : Slight lesion AC : Advanced cavitory ML : Moderate lesion
 FAC: Far-advance cavitory EL : Extensive lesion

表2 新登録結核患者中「HIV合併あり」と報告された患者数、性・年齢階層別、2017年および2007～2017年
Table 2 Number of newly notified tuberculosis patients with HIV infection, by sex and age group, 2017 and 2007-2017

年齢階層 Age group	喀痰塗抹陽性 Sputum smear positive		他結核菌陽性 Other bacteriologically positive		菌陰性結核 Bacteriologically-negative		肺外結核 Extra-pulmonary		総数 Total		
	男 M	女 F	男 M	女 F	男 M	女 F	男 M	女 F	男 M	女 F	
2017年 2017 Calendar year											
総計 Total	6 (1)	7 (2)	6 (1)	1 (1)	1	0	9 (3)	4 (3)	22 (5)	12 (6)	
0-19	0	0	0	0	0	0	0	0	0	0	
20-24	1 (1)	0	0	0	0	0	0	0	1 (1)	0	
25-29	0	1 (1)	1	0	0	0	2 (1)	0	3 (1)	1 (1)	
30-34	0	0	1	1 (1)	0	0	2 (1)	0	3 (1)	1 (1)	
35-39	0	1	0	0	0	0	0	2 (2)	0	3 (2)	
40-44	1	1	0	0	0	0	0	2 (1)	1	3 (1)	
45-49	0	1 (1)	2 (1)	0	1	0	0	0	3 (1)	1 (1)	
50-54	0	1	1	0	0	0	3 (1)	0	4 (1)	1	
55-59	0	0	1	0	0	0	1	0	2	0	
60-64	2	0	0	0	0	0	0	0	2	0	
65-69	0	0	0	0	0	0	1	0	1	0	
70-74	1	0	0	0	0	0	0	0	1	0	
75-79	0	1	0	0	0	0	0	0	0	1	
80+	1	1	0	0	0	0	0	0	1	1	
2007～2017年 2007-2017 Calendar year											
総計 Total	165 (17)	37 (18)	91 (21)	13 (9)	40 (5)	9 (7)	196 (37)	28 (15)	492 (80)	87 (49)	
0-19	1 (1)	0	0	0	0	0	2	0	3 (1)	0	
20-24	6 (4)	0	4 (3)	0	1 (1)	1 (1)	1	1	12 (8)	2 (1)	
25-29	10 (5)	6 (5)	2 (1)	1 (1)	1 (1)	2 (2)	13 (3)	1 (1)	26 (10)	10 (9)	
30-34	13 (3)	4 (4)	12 (1)	4 (3)	2	1 (1)	24 (8)	4 (2)	51 (12)	13 (10)	
35-39	23 (2)	4 (3)	18 (5)	3 (3)	6	2 (2)	34 (7)	6 (5)	81 (14)	15 (13)	
40-44	27 (1)	6 (4)	16 (5)	0 (0)	8 (2)	3 (1)	43 (13)	7 (5)	94 (21)	16 (10)	
45-49	16 (1)	2 (2)	11 (4)	1 (1)	5 (1)	0	32 (5)	2	64 (11)	5 (3)	
50-54	12	1	12 (2)	0	5	0	14 (1)	0	43 (3)	1	
55-59	9	0	4	0	4	0	10	2 (2)	27	2 (2)	
60-64	17	1	6	1 (1)	3	0	7	0	33	2 (1)	
65-69	10	0	3	0	3	0	9	1	25	1	
70-74	5	2	1	1	1	0	3	1	10	4	
75-79	5	1	0	0	1	0	3	2	9	3	
80+	11	10	2	2	0	0	1	1	14	13	

(): 外国人患者の再掲 Re-count of foreigners

HIV : Human Immunodeficiency Virus. M : male patients, F : female patients.

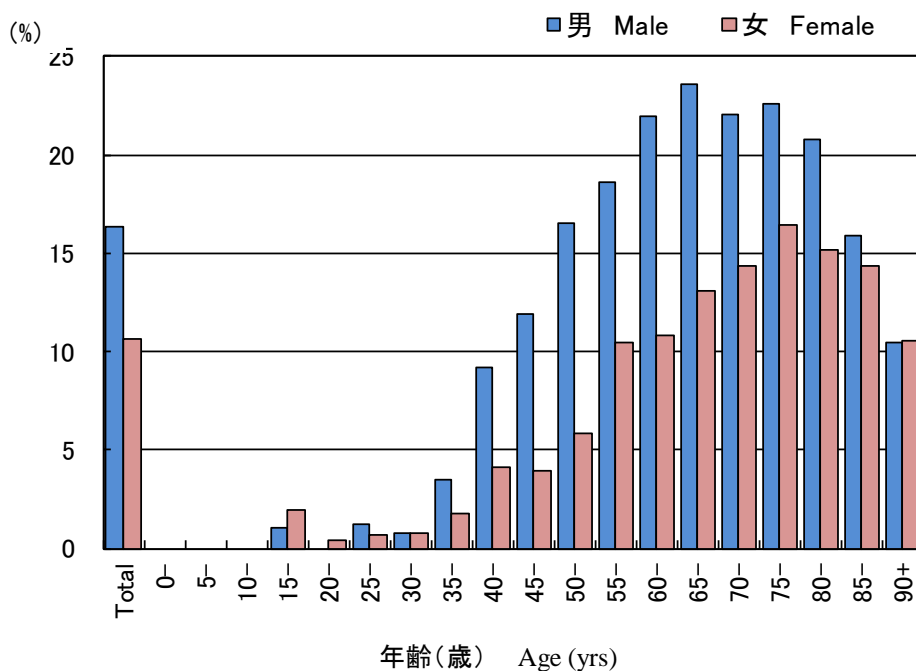


図4 新登録結核患者中「糖尿病合併あり」と報告された患者の割合、性・年齢階層別、2017年
Fig.4 Proportion of newly notified tuberculosis patients with diabetes mellitus in each age-group by sex, 2017

表3 新登録肺結核患者から分離培養された結核菌の抗結核薬剤感受性検査結果、治療歴別、2012～2017年
Table 3 Drug susceptibility test results among newly notified pulmonary tuberculosis patients, by treatment history, 2012-2017

治療歴、菌検査状況、耐性状況 Treatment history, Culture examination results, Drug susceptibility test results	2012				2013				2014				2015				2016				2017			
	n	%	%	%	n	%	%	%	n	%	%	%	n	%	%	%	n	%	%	%	n	%	%	%
総数 Total																								
肺結核 Pulmonary tuberculosis	16,432	100%			15,972	100%			15,149	100%			14,123	100%			13,608	100%			13,011	100%		
培養結果把握 Culture result obtained	14,058	85.6			13,311	83.3			12,909	85.2			12,260	86.8			12,255	90.1			11,764	90.4		
培養陽性 Culture positive	11,261	68.5	100%		10,523	65.9	100%		10,259	67.7	100%		10,035	71.1	100%		9,878	72.6	100%		9,580	73.6	100%	
感受性結果把握 DST result obtained	8,347		74.1	100%	7,701		73.2	100%	7,645		74.5	100%	7,630		76.0	100%	7,732		78.3	100%	7,891		82.4	100%
多剤耐性 MDR	60			0.7	47			0.6	56			0.7	48			0.6	49			0.6	52			0.7
INH 耐性 Any INH resistance	380			4.6	369			4.8	349			4.6	372			4.9	369			4.8	383			4.9
RFP耐性 Any RFP resistance	73			0.9	64			0.8	76			1.0	77			1.0	74			1.0	80			1.0
1剤以上耐性 Any resistance*	810			9.7	757			9.8	749			9.8	767			10.1	741			9.6	853			10.8
初回治療 New treatment																								
肺結核 Pulmonary tuberculosis	15,040	100%			14,727	100%			13,956	100%			13,102	100%			12,686	100%			12,174	100%		
培養結果把握 Culture result obtained	12,882	85.7			12,279	83.4			11,897	85.2			11,394	87.0			11,435	90.1			11,018	90.5		
培養陽性 Culture positive	10,379	69.0	100%		9,782	66.4	100%		9,523	68.2	100%		9,379	71.6	100%		9,284	73.2	100%		9,030	74.2	100%	
感受性結果把握 DST result obtained	7,676		74.0	100%	7,166		73.3	100%	7,104		74.6	100%	7,135		76.1	100%	7,278		78.4	100%	7,434		82.3	100%
多剤耐性 MDR	38			0.5	31			0.4	40			0.6	33			0.5	37			0.5	41			0.6
INH 耐性 Any INH resistance	310			4.0	326			4.5	288			4.1	317			4.4	316			4.3	338			4.5
RFP耐性 Any RFP resistance	46			0.6	42			0.6	58			0.8	58			0.8	56			0.8	62			0.8
1剤以上耐性 Any resistance*	712			9.3	680			9.5	664			9.3	686			9.6	659			9.1	773			10.4
再治療 Re-treatment																								
肺結核 Pulmonary tuberculosis	1,094	100%			1,013	100%			968	100%			851	100%			735	100%			660	100%		
培養結果把握 Culture result obtained	959	87.7			852	84.1			848	87.6			732	86.0			665	90.5			605	91.7		
培養陽性 Culture positive	693	63.3	100%		586	57.8	100%		591	61.1	100%		534	62.7	100%		462	62.9	100%		423	64.1	100%	
感受性結果把握 DST result obtained	555		80.1	100%	435		74.2	100%	449		76.0	100%	412		77.2	100%	358		77.5	100%	362		85.6	100%
多剤耐性 MDR	22			4.0	16			3.7	15			3.3	14			3.4	12			3.4	9			2.5
INH 耐性 Any INH resistance	67			12.1	35			8.0	57			12.7	49			11.9	51			14.2	36			9.9
RFP耐性 Any RFP resistance	26			4.7	22			5.1	17			3.8	18			4.4	16			4.5	15			4.1
1剤以上耐性 Any resistance*	94			16.9	65			14.9	79			17.6	72			17.5	70			19.6	65			18.0
治療歴不明 No information about treatment history																								
肺結核 Pulmonary tuberculosis	298	100%			232	100%			225	100%			170	100%			187	100%			177	100%		
培養結果把握 Culture result obtained	217	72.8			180	77.6			164	72.9			134	78.8			155	82.9			141	79.7		
培養陽性 Culture positive	189	63.4	100%		155	66.8	100%		145	64.4	100%		122	71.8	100%		132	70.6	100%		127	71.8	100%	
感受性結果把握 DST result obtained	116		61.4	100%	100		64.5	100%	92		63.4	100%	83		68.0	100%	96		72.7	100%	95		74.8	100%
多剤耐性 MDR	0			0.0	0			0.0	1			1.1	1			1.2	0			0.0	2			2.1
INH 耐性 Any INH resistance	3			2.6	8			8.0	4			4.3	6			7.2	2			2.1	9			9.5
RFP耐性 Any RFP resistance	1			0.9	0			0.0	1			1.1	1			1.2	2			2.1	3			3.2
1剤以上耐性 Any resistance*	4			3.4	12			12.0	6			6.5	9			10.8	12			12.5	15			15.8

DST: Drug susceptibility test MDR: Multi-drug resistant, i.e., resistant to at least INH and RFP INH: isoniazid RFP: rifampicin

感受性結果は重複あり Cases having drug resistance are counted independently by drug.

*: INH, RFP, SM EBの4剤のうちのいずれかに耐性 resistant to either INH, RFP, SM, or EB

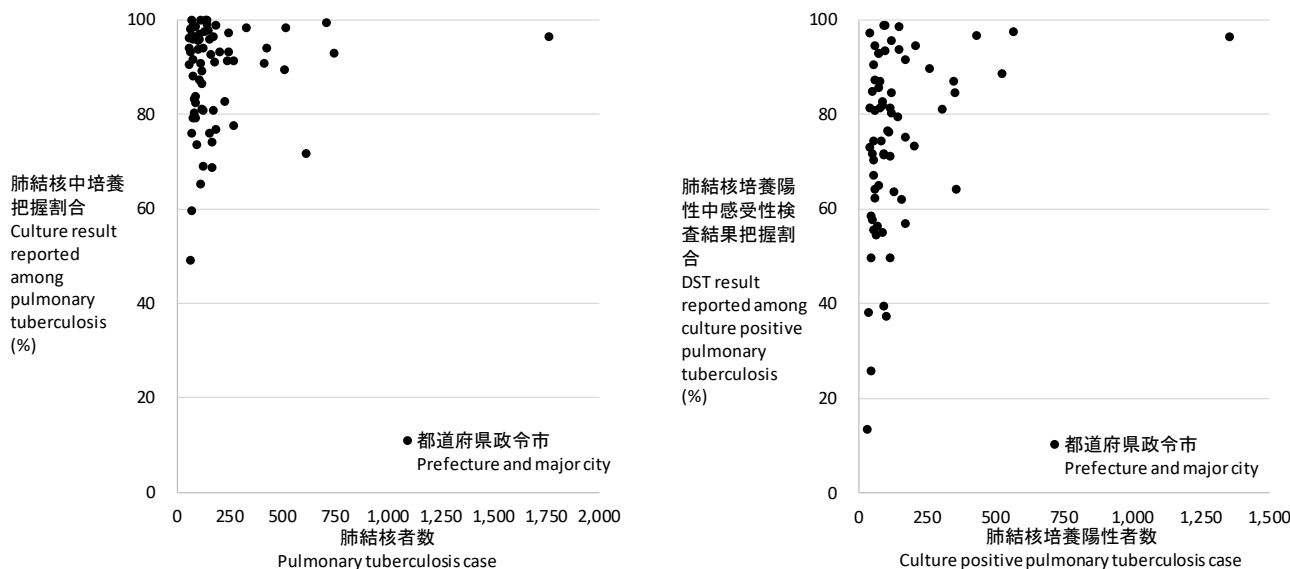
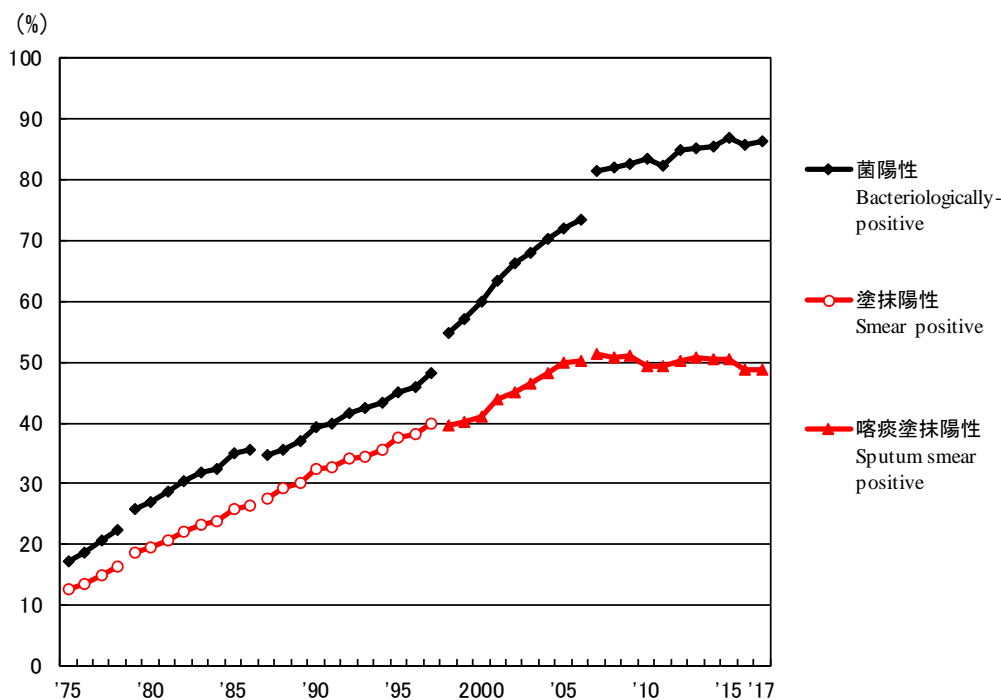


図5 新登録肺結核患者数とその内培養把握割合の散布図(左)、及び新登録肺結核培養陽性者数とその内感受性検査結果把握割合の散布図(右)、都道府県政令指定都市別、2017年

Fig. 5 Scatter plot of culture results reported among pulmonary tuberculosis patients and anti-tuberculosis drug susceptibility test results among newly notified pulmonary tuberculosis patients, by prefecture and major city, 2017



旧図 新登録肺結核患者中菌陽性割合の推移、1975～2017年

Previous Fig

Proportion of bacteriologically confirmed cases among newly notified pulmonary tuberculosis patients, 1975-2017

資料と対象 Sources of information and subjects:

結核登録者の定期報告 Annual tuberculosis reports from public health centers

1975-1978: 全結核 All forms of tuberculosis

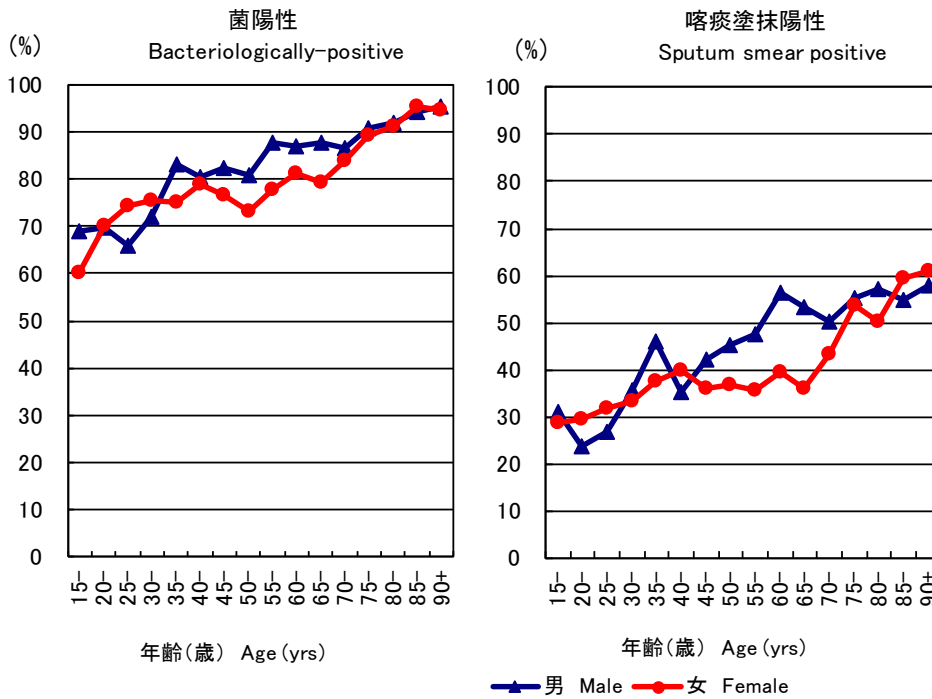
1979-1986: 肺結核 Pulmonary tuberculosis

電算化結核サーベイランスシステム Nationwide computerized tuberculosis surveillance system

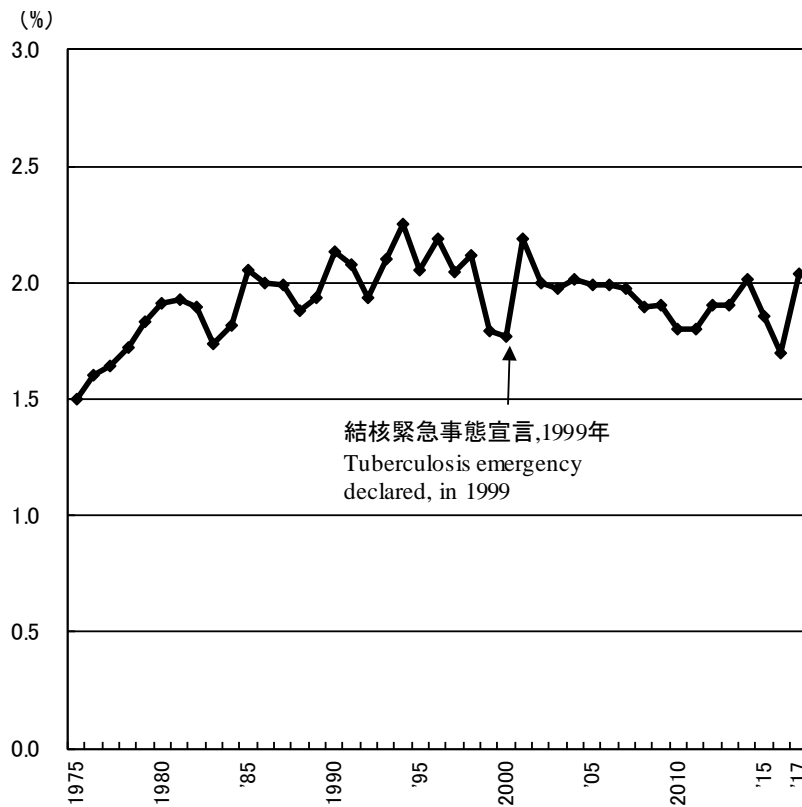
1987-1997: 肺結核 Pulmonary Tuberculosis

1998-2006: 肺結核(活動性分類の変更) Pulmonary tuberculosis (New patient criteria for notification were applied)

2007-2009: 肺結核(核酸増幅法項目の追加) Pulmonary tuberculosis (Item of nucleic acid amplification was added)



旧図 新登録肺結核患者中菌陽性割合、性・年齢5歳階級別、2017年
 Previous Fig. Proportion of bacteriologically confirmed cases among newly notified pulmonary tuberculosis patients by sex and 5-year age group, 2017



旧図 新登録肺結核患者中胸部X線写真での広汎空洞型割合の推移、1975~2017年
 Previous Fig. Proportion of far-advanced cavitory cases among newly notified pulmonary Tuberculosis patients, 1975-2017

旧表 性・職業別、30～59歳新登録肺結核患者中有空洞あるいは／かつ喀痰塗抹陽性の割合、2017年
 Previous table Proportion of cavitory or/and sputum smear positive cases among newly notified pulmonary TB patients aged 30-59 years, 2017

	男 Male								女 Female							
	肺結核 Pulmonary TB	有空洞あるいは 喀痰塗抹陽性 Cavitory or sputum smear(+)			有空洞かつ 喀痰塗抹陽性 Cavitory and sputum smear(+)			肺結核 Pulmonary TB	有空洞あるいは 喀痰塗抹陽性 Cavitory or sputum smear(+)			有空洞かつ 喀痰塗抹陽性 Cavitory and sputum smear(+)				
		n	%	Ratio	n	%	Ratio		n	%	Ratio	n	%	Ratio		
接客業 Service workers	87	51	58.6	1.4	32	36.8	1.8	91	44	48.4	1.2	21	23.1	2.4		
医療職 Medical workers	72	31	43.1	1.0	15	20.8	1.0	228	93	40.8	1.0	22	9.6	1.0		
教員・保育士 Teachers/ Nursery nurses	19	6	31.6	0.7	4	21.1	1.0	23	9	39.1	1.0	4	17.4	1.8		
他の常用勤労者 Other regular workers	926	432	46.7	1.1	196	21.2	1.0	265	105	39.6	1.0	34	12.8	1.3		
他の臨時・日雇 Other temporary/ daily workers	92	65	70.7	1.6	39	42.4	2.0	82	44	53.7	1.3	9	11.0	1.1		
他の自営自由 Other self- employed	158	96	60.8	1.4	60	38.0	1.8	25	10	40.0	1.0	3	12.0	1.2		
無職 Jobless	290	182	62.8	1.5	96	33.1	1.6	147	77	52.4	1.3	49	33.3	3.5		
その他 Others	120	68	56.7	1.3	31	25.8	1.2	156	71	45.5	1.1	32	20.5	2.1		
総数 Total	1,764	931	52.8		473	26.8		1,017	453	44.5		174	17.1			

その他:家事、学生、不明 Others:Houskeepers/ Students/ Unknown

Ratio: 医療職の割合に対するその他職業の割合の比 The ratio of each proportion to that of medical workers

旧表 新登録肺結核患者の薬剤感受性検査結果、性・年齢別、2017年および2007～2017年
 Previous table Drug susceptibility test results among newly notified pulmonary tuberculosis patients, by sex and age group, 2017 and 2007-2017

年齢 Age group	総数 Total										初回治療(再掲) New treatment (Re-count)										
	男 Male					女 Female					男 Male				女 Female						
	感受性結 果把握 DST result obtained	多剤耐 性 MDR	INH耐 性 Any resista nce	RFP耐 性 Any resista nce	1剤以 上耐性* Any resista nce	感受性結 果把握 DST result obtained	多剤耐 性 MDR	INH耐 性 Any resista nce	RFP耐 性 Any resista nce	1剤以 上耐性* Any resista nce	感受性結 果把握 DST result obtained	多剤耐 性 MDR	INH耐 性 Any resista nce	RFP耐 性 Any resista nce	1剤以 上耐性* Any resista nce	感受性結 果把握 DST result obtained	多剤耐 性 MDR	INH耐 性 Any resista nce	RFP耐 性 Any resista nce	1剤以 上耐性* Any resista nce	
2017年 2017 Calendar year	総数 Total	5,042	34	261	54	584	2,849	18	122	26	269	4,711	29	231	42	528	2,723	12	107	20	245
	0-19	53	3	6	3	11	27	0	3	0	6	51	2	5	2	10	27	0	3	0	6
	20-29	282	7	30	10	52	260	4	23	6	52	270	6	28	8	49	250	2	21	4	48
	30-39	243	6	15	10	45	201	4	15	6	33	231	4	13	8	42	197	3	14	5	31
	40-49	373	4	24	8	48	205	2	8	3	17	351	4	24	5	43	197	2	8	3	15
	50-59	467	2	28	3	71	145	3	10	4	19	442	2	28	3	68	134	1	8	2	16
	60-69	769	3	37	5	87	229	1	9	1	22	724	2	31	4	78	215	1	8	1	20
	70-79	1,045	4	55	8	134	453	1	17	1	41	983	4	49	6	121	439	1	15	1	39
	80+	1,810	5	66	7	136	1,329	3	37	5	79	1,659	5	53	6	117	1,264	2	30	4	70
2007～2017年 2007-2017 Calendar year	総数 Total	51,646	387	2,622	555	6,070	27,151	207	1,199	286	2,713	46,952	252	2,152	368	5,285	25,533	129	986	192	2,391
	0-19	394	10	38	10	74	328	2	29	3	67	377	7	35	7	71	312	2	27	3	62
	20-29	2,628	55	203	70	456	2,258	55	180	74	385	2,516	42	180	54	426	2,160	39	159	54	353
	30-39	3,086	25	200	40	476	2,346	32	156	45	338	2,921	19	187	34	448	2,254	25	140	34	310
	40-49	4,100	36	224	55	563	2,000	20	99	30	248	3,843	26	201	37	506	1,901	12	87	21	226
	50-59	5,766	51	322	81	835	1,641	22	79	30	186	5,351	32	281	52	752	1,547	9	60	16	162
	60-69	8,994	60	481	101	1,184	2,433	13	115	18	288	8,237	40	398	66	1,028	2,286	7	91	11	250
	70-79	11,251	85	586	113	1,349	4,856	25	200	33	478	10,074	45	443	63	1,131	4,495	11	161	16	417
	80+	15,427	65	568	85	1,133	11,289	38	341	53	723	13,633	41	427	55	923	10,578	24	261	37	611
2007～2017年 2007-2017 Calendar year	総数 Total	100%	0.7	5.1	1.1	11.8	100%	0.8	4.4	1.1	10.0	100%	0.5	4.6	0.8	11.3	100%	0.5	3.9	0.8	9.4
	0-19	100	2.5	9.6	2.5	18.8	100	0.6	8.8	0.9	20.4	100	1.9	9.3	1.9	18.8	100	0.6	8.7	1.0	19.9
	20-29	100	2.1	7.7	2.7	17.4	100	2.4	8.0	3.3	17.1	100	1.7	7.2	2.1	16.9	100	1.8	7.4	2.5	16.3
	30-39	100	0.8	6.5	1.3	15.4	100	1.4	6.6	1.9	14.4	100	0.7	6.4	1.2	15.3	100	1.1	6.2	1.5	13.8
	40-49	100	0.9	5.5	1.3	13.7	100	1.0	5.0	1.5	12.4	100	0.7	5.2	1.0	13.2	100	0.6	4.6	1.1	11.9
	50-59	100	0.9	5.6	1.4	14.5	100	1.3	4.8	1.8	11.3	100	0.6	5.3	1.0	14.1	100	0.6	3.9	1.0	10.5
	60-69	100	0.7	5.3	1.1	13.2	100	0.5	4.7	0.7	11.8	100	0.5	4.8	0.8	12.5	100	0.3	4.0	0.5	10.9
	70-79	100	0.8	5.2	1.0	12.0	100	0.5	4.1	0.7	9.8	100	0.4	4.4	0.6	11.2	100	0.2	3.6	0.4	9.3
	80+	100	0.4	3.7	0.6	7.3	100	0.3	3.0	0.5	6.4	100	0.3	3.1	0.4	6.8	100	0.2	2.5	0.3	5.8

DST: Drug susceptibility test. MDR: Multi-drug resistance, i.e., resistant to at least INH and RFP. INH: Isoniazid. RFP: Rifampicin.

*: 2012年以降はINH, RFP, SM EBの4剤のうちのいずれかに耐性

旧表 新登録肺結核患者の薬剤感受性検査結果および耐性率、性・年齢別、2007～2017年（再掲；外国人）

Previous table Drug susceptibility test results among newly notified pulmonary tuberculosis patients, by sex and age group, 2007-2017 (Re-count of foreigners)

年齢 Age group	総数 Total										初回治療(再掲) New treatment (Re-count)									
	男 Male					女 Female					男 Male					女 Female				
	感受性結果 把握 DST result obtained	多剤耐性 MDR	INH耐性 Any INH resistance	RFP耐性 Any RFP resistance	1剤以上耐性* Any resistance	感受性結果 把握 DST result obtained	多剤耐性 MDR	INH耐性 Any INH resistance	RFP耐性 Any RFP resistance	1剤以上耐性* Any resistance	感受性結果 把握 DST result obtained	多剤耐性 MDR	INH耐性 Any INH resistance	RFP耐性 Any RFP resistance	1剤以上耐性* Any resistance	感受性結果 把握 DST result obtained	多剤耐性 MDR	INH耐性 Any INH resistance	RFP耐性 Any RFP resistance	1剤以上耐性* Any resistance
2007～2017年	2007-2017 Calendar year																			
総数 Total	1781	72	205	86	336	1876	82	231	104	374	1692	49	174	63	302	1781	60	202	77	333
0-19	117	9	26	9	37	66	1	10	2	13	113	6	23	6	34	64	1	9	2	12
20-29	903	46	111	55	179	854	48	120	62	199	867	34	93	42	162	821	35	104	46	178
30-39	313	10	30	14	54	466	19	62	22	89	300	8	28	12	50	442	15	57	17	82
40-49	149	5	15	6	27	261	5	20	7	39	137	1	10	1	20	244	2	17	3	34
50-59	98	0	5	0	9	102	5	12	6	18	93	0	5	0	9	93	4	9	5	13
60-69	90	2	11	2	20	53	1	3	2	6	81	2	9	2	18	51	1	3	2	6
70-79	58	0	4	0	5	30	3	4	3	6	53	0	4	0	5	24	2	3	2	4
80+	53	0	3	0	5	44	0	0	0	4	48	0	2	0	4	42	0	0	0	4
2007～2017年	2007-2017 Calendar year																			
総数 Total	100%	4.0	11.5	4.8	18.9	100%	4.4	12.3	5.5	19.9	100%	2.9	10.3	3.7	17.8	100%	3.4	11.3	4.3	18.7
0-19	100	7.7	22.2	7.7	31.6	100	1.5	15.2	3.0	19.7	100	5.3	20.4	5.3	30.1	100	1.6	14.1	3.1	18.8
20-29	100	5.1	12.3	6.1	19.8	100	5.6	14.1	7.3	23.3	100	3.9	10.7	4.8	18.7	100	4.3	12.7	5.6	21.7
30-39	100	3.2	9.6	4.5	17.3	100	4.1	13.3	4.7	19.1	100	2.7	9.3	4.0	16.7	100	3.4	12.9	3.8	18.6
40-49	100	3.4	10.1	4.0	18.1	100	1.9	7.7	2.7	14.9	100	0.7	7.3	0.7	14.6	100	0.8	7.0	1.2	13.9
50-59	100	0.0	5.1	0.0	9.2	100	4.9	11.8	5.9	17.6	100	0.0	5.4	0.0	9.7	100	4.3	9.7	5.4	14.0
60-69	100	2.2	12.2	2.2	22.2	100	1.9	5.7	3.8	11.3	100	2.5	11.1	2.5	22.2	100	2.0	5.9	3.9	11.8
70-79	100	0.0	6.9	0.0	8.6	100	10.0	13.3	10.0	20.0	100	0.0	7.5	0.0	9.4	100	8.3	12.5	8.3	16.7
80+	100	0.0	5.7	0.0	9.4	100	0.0	0.0	0.0	9.1	100	0.0	4.2	0.0	8.3	100	0.0	0.0	0.0	9.5

DST: Drug susceptibility test. MDR: Multi-drug resistance, i.e., resistant to at least INH and RFP. INH: Isoniazid. RFP: Rifampicin.

*: 2012年はINH, RFP, SM EBの4剤のうちのいずれかに耐性