

【患者発見】

表1 新登録結核患者の発見方法、2007～2018年  
Table1 Proportion of mode of detection among newly notified tuberculosis patients, 2007-2018

年 Year	新登録患者 Newly notified TB patients	個別健診 Individual medical checkup		定期健診 Mass screening								接触者健診 Contact examination				医療機関 Medical institutions						その他 Others		不明 Unknown	
				学校 Schools		住民 Residents		職場 Employees		施設 Facilities		家族 Family		その他 Others		有症状受診(*1) Outpatients with TB symptoms(*1)		入院中 Inpatients with other diseases		通院中 Outpatients with other diseases					
				n	%	n	%	n	%	n	%	n	%	n	%	n	%	n	%	n	%				
2007	25,311	537	2.1	217	0.9	636	2.5	1,931	7.6	145	0.6	355	1.4	370	1.5	16,997	67.2	2,031	8.0	1,611	6.4	340	1.3	141	0.6
2008	24,760	639	2.6	195	0.8	486	2.0	1,877	7.6	144	0.6	325	1.3	410	1.7	15,347	62.0	2,681	10.8	2,100	8.5	316	1.3	240	1.0
2009	24,170	611	2.5	197	0.8	550	2.3	1,749	7.2	136	0.6	324	1.3	311	1.3	14,864	61.5	2,752	11.4	2,220	9.2	301	1.2	155	0.6
2010	23,261	507	2.2	244	1.0	544	2.3	1,618	7.0	128	0.6	313	1.3	350	1.5	13,901	59.8	2,792	12.0	2,305	9.9	333	1.4	226	1.0
2011	22,681	470	2.1	188	0.8	497	2.2	1,531	6.8	126	0.6	354	1.6	482	2.1	13,177	58.1	2,916	12.9	2,515	11.1	330	1.5	95	0.4
2012	21,283	409	1.9	163	0.8	498	2.3	1,424	6.7	121	0.6	315	1.5	374	1.8	12,284	57.7	2,941	13.8	2,312	10.9	357	1.7	85	0.4
2013	20,495	413	2.0	172	0.8	455	2.2	1,246	6.1	89	0.4	314	1.5	333	1.6	11,978	58.4	2,745	13.4	2,306	11.3	336	1.6	108	0.5
2014	19,615	344	1.8	201	1.0	404	2.1	1,221	6.2	92	0.5	303	1.5	333	1.7	11,441	58.3	2,591	13.2	2,210	11.3	328	1.7	147	0.7
2015	18,280	319	1.7	192	1.1	359	2.0	1,147	6.3	78	0.4	248	1.4	263	1.4	10,556	57.7	2,630	14.4	2,043	11.2	144	0.8	127	0.7
2016	17,625	319	1.8	250	1.4	355	2.0	1,056	6.0	98	0.6	211	1.2	409	2.3	10,073	57.2	2,471	14.0	1,971	11.2	146	0.8	98	0.6
2017	16,789	331	2.0	259	1.5	336	2.0	1,088	6.5	70	0.4	256	1.5	323	1.9	9,338	55.6	2,528	15.1	1,900	11.3	150	0.9	73	0.4
2018	15,590	290	1.9	226	1.4	288	1.8	1,077	6.9	74	0.5	239	1.5	314	2.0	8,617	55.3	2,317	14.9	1,798	11.5	139	0.9	56	0.4
2018年																									
Age group																									
0～9	30	0	0.0	1	3.3	0	0.0	0	0.0	0	0.0	15	50.0	4	13.3	6	20.0	0	0.0	0	0.0	3	10.0	0	0.0
10～19	179	3	1.7	40	22.3	0	0.0	9	5.0	0	0.0	25	14.0	18	10.1	69	38.5	2	1.1	3	1.7	0	0.0	0	0.0
20～29	1,273	25	2.0	168	13.2	3	0.2	304	23.9	5	0.4	11	0.9	92	7.2	566	44.5	17	1.3	17	1.3	7	0.5	4	0.3
30～39	885	27	3.1	15	1.7	6	0.7	206	23.3	3	0.3	29	3.3	26	2.9	499	56.4	17	1.9	36	4.1	4	0.5	7	0.8
40～49	1,034	32	3.1	1	0.1	13	1.3	240	23.2	3	0.3	30	2.9	44	4.3	532	51.5	41	4.0	70	6.8	11	1.1	2	0.2
50～59	1,150	42	3.7	0	0.0	14	1.2	169	14.7	6	0.5	23	2.0	47	4.1	634	55.1	77	6.7	103	9.0	14	1.2	8	0.7
60～69	1,704	50	2.9	1	0.1	39	2.3	127	7.5	7	0.4	39	2.3	34	2.0	918	53.9	182	10.7	251	14.7	29	1.7	11	0.6
70～79	2,995	52	1.7	0	0.0	114	3.8	22	0.7	12	0.4	27	0.9	26	0.9	1,649	55.1	511	17.1	528	17.6	25	0.8	12	0.4
80～89	4,534	45	1.0	0	0.0	78	1.7	0	0.0	21	0.5	30	0.7	16	0.4	2,638	58.2	1,012	22.3	637	14.0	31	0.7	7	0.2
90～	1,806	14	0.8	0	0.0	21	1.2	0	0.0	17	0.9	10	0.6	7	0.4	1,106	61.2	458	25.4	153	8.5	15	0.8	5	0.3

TB: tuberculosis

\*1 有症状:咳・痰・血痰・喀血等の「呼吸器症状」や、喘鳴、胸痛、背部痛、息切れ、発熱、寝汗、全身倦怠、体重減少等の「その他の症状」を有する場合。

TB symptoms: Respiratory symptoms such as cough, sputum expectoration, bloody sputum, and hemoptysis; and other symptoms such as wheezing, chest pain, back pain, dyspnea, fever, night sweating, fatigue tendency, and weight loss. Total number: 92 group examinations, 63 registered health examinations.

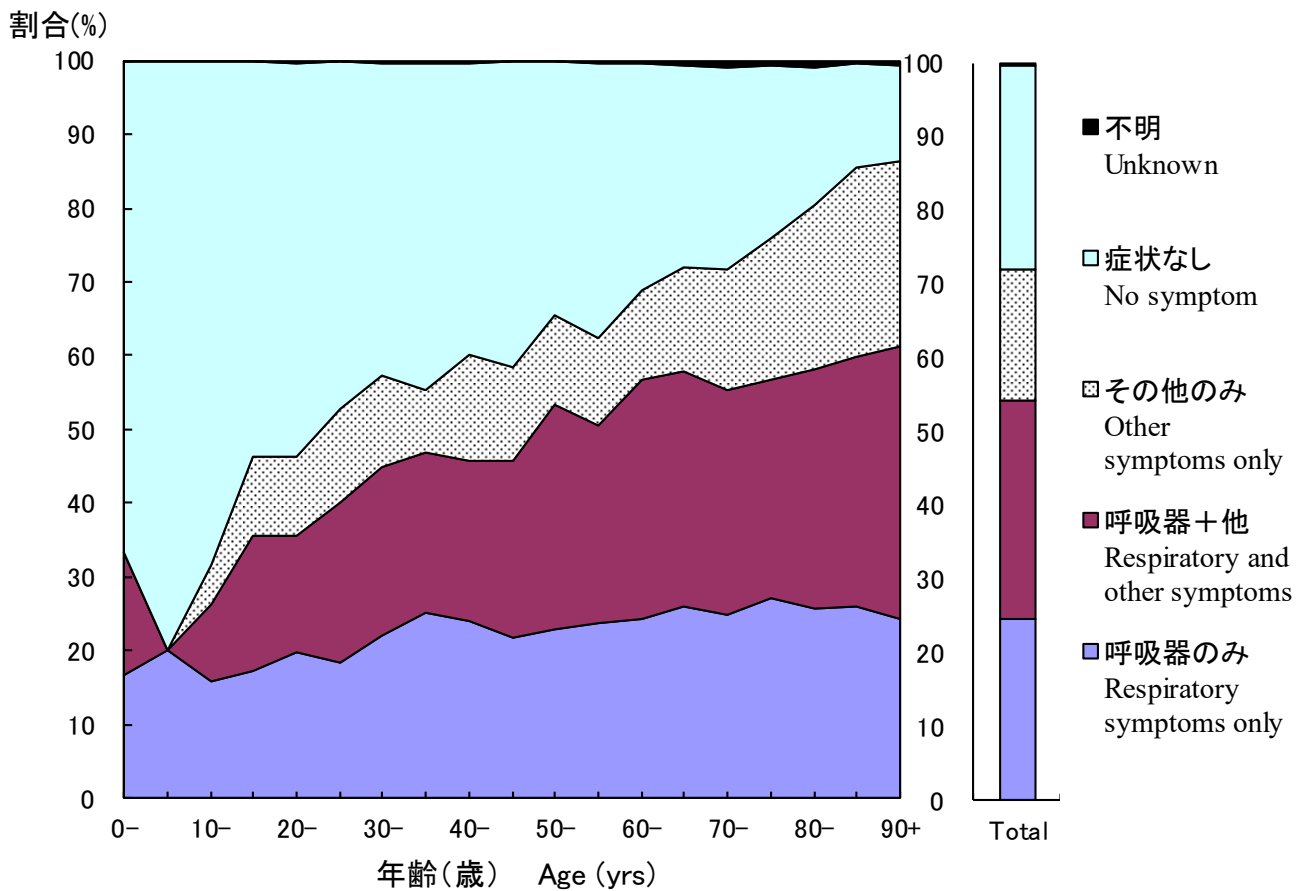


図1 新登録肺結核中年齢5歳階層別症状の有無、2018年

Fig.1 Proportion of symptoms among newly notified pulmonary tuberculosis patients by 5- years age group, in 2018

呼吸器症状は咳，痰，血痰，喀血を含む。その他の症状は喘鳴，胸痛，背部痛，息切れ，発熱，寝汗，全身倦怠，体重減少を含む。

Respiratory symptoms include cough, sputum expectoration, bloody sputum, and hemoptysis. Other symptoms include wheezing, chest pain, back pain, dyspnea, fever, night sweating, fatigue tendency, and weight loss.

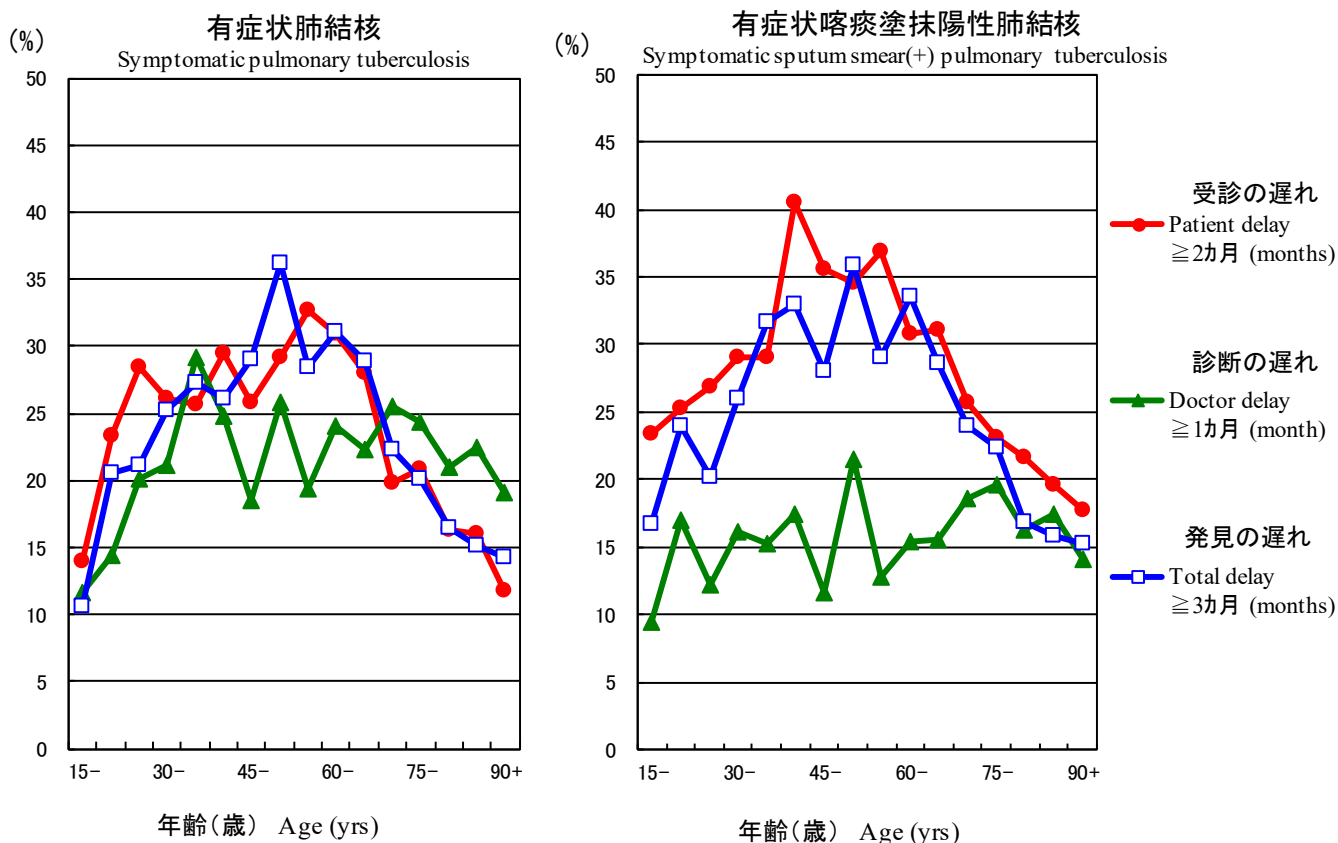


図2 新登録有症状肺結核中年齢5歳階層別発見の遅れの割合、2018年

Fig.2 Proportion of patient delay, doctor delay and total delay among symptomatic pulmonary tuberculosis patients by 5-year age group, in 2018

受診の遅れ:「発病の時期」(結核の症状が初めて自覚された時期)から「初診の時期」(結核による症状を訴えて初めて医療機関を受診した時期)までの期間が2カ月以上である場合。

Patient delay: time interval from the onset of symptoms to the first visit to a medical institution of 2 months or longer

診断の遅れ:「初診の時期」から「診断の時期」(結核と診断された時期)までの期間が1カ月以上である場合。

Doctor delay: time interval from the first visit to a medical institution to the diagnosis of tuberculosis of 1 month or longer

発見の遅れ:「発病の時期」から「診断の時期」までの期間が3カ月以上である場合。

Total delay: time interval from the onset of symptoms to the diagnosis of tuberculosis is 3 months or longer

旧表 新登録結核患者の発見方法、年齢階層別、2018年  
Previous table Proportion of mode of detection among newly notified TB patients by age group, 2018

年齢階層 Age groups	新登録患者 Newly notified TB patients	個別健診 Individual medical checkup	定期健診 Mass screening				接触者健診 Contact examination		医療機関 Medical institutions			その他 Others	不明 Unknown
			学校 Schools	住民 Residents	職場 Employees	施設 Facilities	家族 Family	その他 Others	有症状受診 Outpatients with TB symptoms (*1)	入院中 Inpatients with other diseases	通院中 Outpatients with other diseases		
全結核 All forms of TB	<i>n</i>	%	%	%	%	%	%	%	%	%	%	%	%
総数 Total	15,590	1.9	1.4	1.8	6.9	0.5	1.5	2.0	55.3	14.9	11.5	0.9	0.4
0-14	51	0.0	7.8	0.0	0.0	0.0	51.0	9.8	23.5	0.0	0.0	5.9	0.0
15-19	158	1.9	23.4	0.0	5.7	0.0	8.9	10.8	39.9	1.3	1.9	0.0	0.0
20-24	654	2.6	17.9	0.2	17.3	0.6	1.4	8.1	43.6	0.6	1.2	0.9	0.3
25-29	619	1.3	8.2	0.3	30.9	0.2	0.3	6.3	45.4	2.1	1.5	0.2	0.3
30-34	460	3.5	2.8	0.2	22.4	0.0	2.0	3.7	57.8	1.5	3.5	0.4	0.4
35-39	425	2.6	0.5	1.2	24.2	0.7	4.7	2.1	54.8	2.4	4.7	0.5	1.2
40-44	433	4.8	0.2	1.4	24.5	0.5	2.3	4.4	49.7	2.3	7.2	0.9	0.0
45-49	601	1.8	0.0	1.2	22.3	0.2	3.3	4.2	52.7	5.2	6.5	1.2	0.3
50-54	557	4.3	0.0	1.4	15.8	0.4	1.1	4.5	55.7	5.6	8.8	0.9	0.4
55-59	593	3.0	0.0	1.0	13.7	0.7	2.9	3.7	54.6	7.8	9.1	1.5	1.0
60-64	642	3.6	0.2	1.7	11.5	0.0	2.8	1.4	56.2	8.1	11.8	0.8	0.8
65-69	1,062	2.5	0.0	2.6	5.0	0.7	2.0	2.4	52.4	12.2	16.5	2.3	0.6
70-74	1,253	1.9	0.0	3.8	1.3	0.3	1.0	1.3	55.8	14.9	17.8	1.0	0.6
75-79	1,742	1.6	0.0	3.8	0.3	0.5	0.9	0.6	54.5	18.6	17.5	0.7	0.3
80-84	2,170	1.0	0.0	2.4	0.0	0.3	0.8	0.3	56.7	20.9	16.1	0.9	0.2
85-89	2,364	1.0	0.0	1.1	0.0	0.6	0.5	0.4	59.5	23.6	12.2	0.5	0.1
90+	1,806	0.8	0.0	1.2	0.0	0.9	0.6	0.4	61.2	25.4	8.5	0.8	0.3
(再掲) 喀痰塗抹陽性肺結核 (Re-count) Sputum smear positive pulmonary TB													
総数 Total	5,781	1.4	0.6	1.2	4.6	0.4	0.5	0.5	63.2	15.6	10.1	0.7	0.3
0-14	4	0.0	0.0	0.0	0.0	0.0	0.0	0.0	100.0	0.0	0.0	0.0	0.0
15-19	40	5.0	17.5	0.0	5.0	0.0	2.5	10.0	55.0	2.5	0.0	0.0	0.0
20-24	141	1.4	11.3	0.0	12.1	0.0	0.0	3.5	63.8	0.7	0.7	1.4	0.0
25-29	155	1.3	5.8	0.0	21.3	0.0	0.0	2.6	61.3	3.2	0.6	0.0	0.0
30-34	138	2.9	1.4	0.0	15.2	0.0	0.0	0.0	76.8	0.0	1.4	0.0	0.0
35-39	121	0.8	0.0	0.0	13.2	0.0	2.5	1.7	76.9	3.3	0.8	0.0	0.8
40-44	127	5.5	0.0	0.8	23.6	0.8	0.8	0.0	58.3	0.8	7.9	0.0	0.0
45-49	194	1.0	0.0	1.5	19.6	0.0	1.0	0.0	67.0	3.1	4.6	1.0	0.0
50-54	200	2.0	0.0	0.5	11.5	0.0	0.0	1.0	73.5	2.5	6.5	0.0	1.0
55-59	217	0.5	0.0	1.4	12.4	0.9	0.9	0.5	65.9	8.3	6.0	1.8	0.5
60-64	265	1.9	0.0	0.0	9.8	0.0	0.8	0.4	67.5	6.4	9.4	0.8	1.1
65-69	428	1.9	0.0	1.2	5.1	0.5	0.5	0.7	61.9	13.6	11.4	1.6	0.9
70-74	464	1.9	0.0	1.9	1.1	0.0	0.4	0.0	64.0	14.9	14.0	0.6	0.4
75-79	637	1.7	0.0	2.5	0.6	0.6	0.8	0.3	57.9	19.3	14.6	0.9	0.2
80-84	882	1.1	0.0	1.9	0.0	0.3	0.6	0.1	62.6	18.9	13.3	0.6	0.2
85-89	975	0.8	0.0	0.6	0.0	0.6	0.4	0.4	59.2	24.8	12.3	0.4	0.1
90+	793	0.8	0.0	0.8	0.0	1.0	0.3	0.1	64.7	23.5	8.3	0.4	0.3

TB: tuberculosis

\*1 有症状: 咳・痰・血痰・喀血等の「呼吸器症状」や、喘鳴、胸痛、背部痛、息切れ、発熱、寝汗、全身倦怠、体重減少等の「その他の症状」を有する場合。

TB symptoms: Respiratory symptoms such as cough, sputum expectoration, bloody sputum, and hemoptysis; and other symptoms such as wheezing, chest pain, back pain, dyspnea, fever, night sweating, fatigue tendency, and weight loss.

旧表改訂 新登録結核患者数、職業・性・年齢階層別、2018年  
Previous table Number of newly notified TB patients by occupation, sex and age group, 2018

性/年齢	総数	接客業	看護師 /保健師	医師	他医療 従事者	教員/ 保育士	生徒/ 学生	他常用 勤労者	他臨時 /日雇	他自営/ 自由業	家事従 事者	保育園児/ 幼稚園児/ 他の乳幼児	無職/ 他	不明
Sex/Age group	Total	Service workers	Nurses/P ublic health nurses	Medical doctors	Other medical workers	Teachers/ Nursery nurses	Pupils/St udents	Other regular workers	Other temporar y/daily workers	Other self- employed	Housekee pers	Infants/ Little children	Jobless/ Others	Unknown
男 Male	9,263	200	13	26	60	27	350	1,810	345	430	9	16	5,789	188
0-14	32	0	0	0	0	0	15	0	0	0	0	16	1	0
15-19	88	1	0	0	0	0	71	10	1	0	0	0	5	0
20-24	372	3	2	0	6	0	173	136	13	1	0	0	33	5
25-29	351	17	0	2	8	2	70	187	21	8	0	0	30	6
30-39	467	33	4	1	18	5	18	275	39	20	1	0	42	11
40-49	639	35	4	2	8	5	3	382	35	53	0	0	99	13
50-59	777	38	0	9	11	7	0	390	60	60	1	0	179	22
60-69	1,209	41	2	3	7	8	0	321	105	103	1	0	574	44
70-79	1,930	23	1	2	2	0	0	98	61	115	0	0	1,584	44
80+	3,398	9	0	7	0	0	0	11	10	70	6	0	3,242	43
女 Female	6,327	175	155	8	165	33	253	581	188	95	192	7	4,374	101
0-14	19	0	0	0	0	0	11	0	0	0	0	7	1	0
15-19	70	2	0	0	3	0	52	4	1	0	1	0	7	0
20-24	282	19	12	0	8	5	118	72	13	0	2	0	29	4
25-29	268	9	12	1	8	10	57	107	16	3	10	0	29	6
30-39	418	38	34	2	39	8	15	125	37	7	27	0	70	16
40-49	395	44	54	3	30	3	0	118	44	7	24	0	59	9
50-59	373	24	29	1	41	4	0	84	30	16	23	0	106	15
60-69	495	20	14	1	31	3	0	44	24	22	34	0	287	15
70-79	1,065	18	0	0	5	0	0	23	19	19	54	0	910	17
80+	2,942	1	0	0	0	0	0	4	4	21	17	0	2,876	19

旧表 職業別、20～59歳新登録肺結核患者の発見方法別割合、2018年  
Previous table Proportion of mode of detection among newly notified pulmonary TB patients aged 20-59 years by occupation, 2018

	肺結核 Pulmonary TB patients	個別健 診 Individual medical checkup	定期健診 Mass screening			接触者健診 Contact examination		医療機関 Clinics/Hospitals			その他/ 不明 Others/Un known
			住民 Residents	職場 Employe es	学校/施 設 Schools/F acilities	家族 Family	その他 Others	有症状 受診(*2) Outpatient s with TB symptoms	入院中 Inpatients with other diseases	通院中 Outpatients with other diseases	
総数 Total	3,505	3.3	1.0	25.2	5.6	2.5	5.7	45.5	2.9	4.4	3.8
接客業 Service workers	208	4.3	1.0	25.0	0.5	2.4	1.9	57.2	1.4	4.3	1.9
医療関係者 Medical workers(*1)	285	1.4	0.4	37.9	0.7	2.1	10.2	38.6	0.0	6.3	2.5
教員・保育士 Teachers/Nursery nurses	41	2.4	0.0	39.0	0.0	4.9	12.2	36.6	2.4	0.0	2.4
学生 Students	403	2.5	0.7	2.2	43.9	0.5	9.4	29.0	0.2	0.5	10.9
他の常用勤労者 Other regular workers	1,517	2.8	0.5	38.5	0.2	2.7	5.7	41.8	2.1	3.8	1.8
他の臨時・日雇 Other temporary/ daily workers	241	3.3	1.7	22.8	0.0	2.9	8.3	52.3	1.7	4.6	2.5
他の自営自由業 Other self-employed	141	9.9	5.0	8.5	0.0	2.1	0.0	61.7	4.3	5.7	2.8
家事 Housekeepers	59	8.5	3.4	6.8	0.0	0.0	0.0	61.0	1.7	16.9	1.7
無職 Jobless/ Others	533	3.8	1.7	6.9	2.3	3.9	3.0	56.3	9.6	6.6	6.0
不明 Unknown	77	2.6	0.0	9.1	0.0	2.6	1.3	66.2	2.6	5.2	10.4

\*1 医療関係者：看護師・保健師・助産師，医師，その他医療職含む。

Medical workers include nurses, public health nurses, medical doctors and dentists, physical therapists, occupational therapists, medical technologists, radiographers, and co-medicals.

\*2 有症状：咳・痰・血痰・喀血等の「呼吸器症状」や、喘鳴、胸痛、背部痛、息切れ、発熱、寝汗、全身倦怠、体重減少等の「その他の症状」を有する場合。  
TB symptoms: Respiratory symptoms such as cough, sputum expectoration, bloody sputum, and hemoptysis; and other symptoms such as wheezing, chest pain, back pain, dyspnea, fever, night sweating, fatigue tendency, and weight loss.

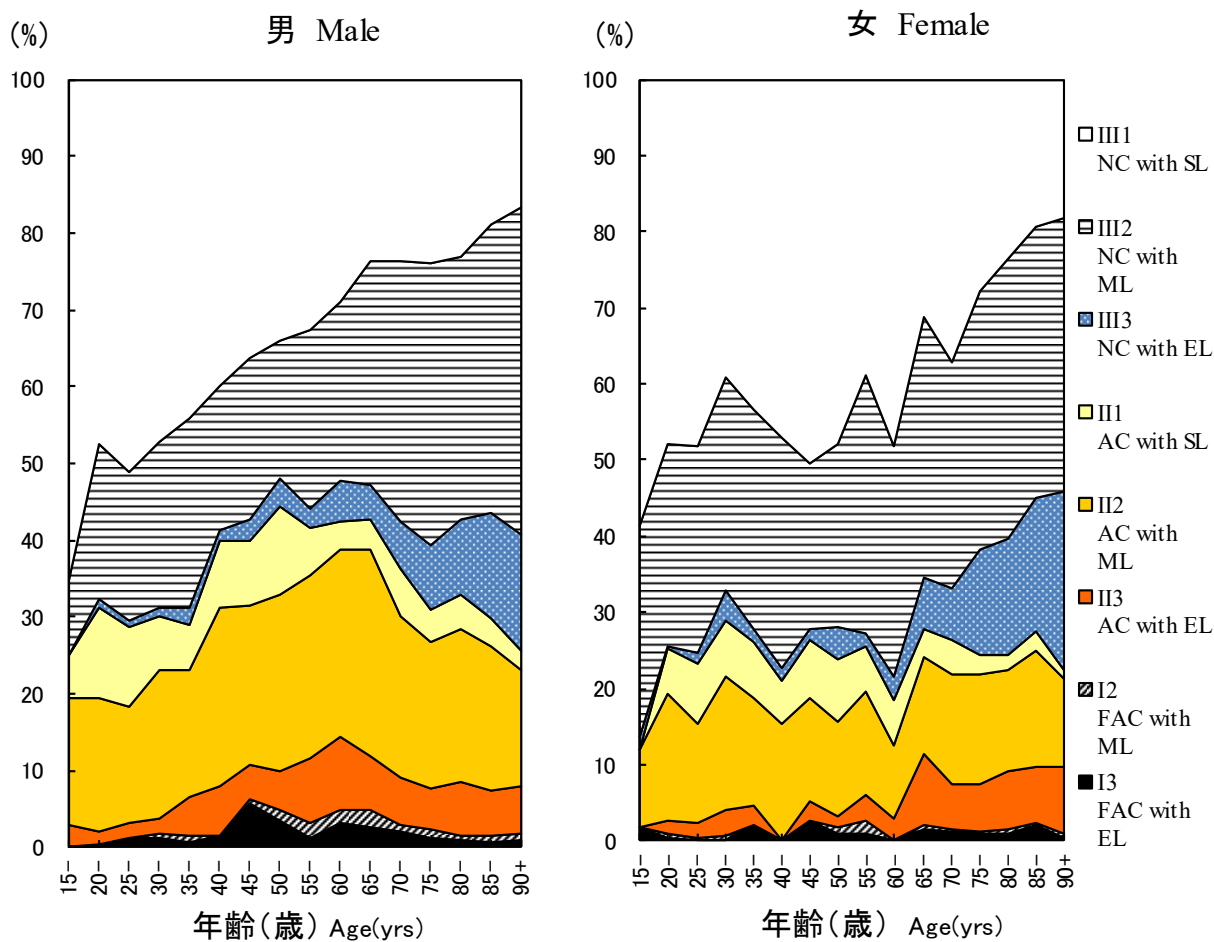


图3 新登録肺結核患者中胸部X線写真学会分類別所見割合，性・年齢5 歳階級別，2018 年  
 Fig.3 Proportion of cases classified by X-ray classification by sex and 5-yearage group, 2018

NC : Non-cavitary SL : Slight lesion AC : Advanced cavitary ML : Moderate lesion  
 FAC: Far-advance cavitary EL : Extensive lesion

表2 新登録結核患者中「HIV合併あり」と報告された患者数、性・年齢階層別、2018年および2007～2018年  
 Table 2 Number of newly notified tuberculosis patients with HIV infection, by sex and age group, 2018 and 2007—2018

年齢階層 Age group	喀痰塗抹陽性 Sputum smear positive		他結核菌陽性 Other bacteriologic ally- positive		菌陰性結核 Bacteriologically- negative		肺外結核 Extra-pulmonary		総数 Total		
	男 M	女 F	男 M	女 F	男 M	女 F	男 M	女 F	男 M	女 F	
2018年 2018 Calendar year											
総計 Total	9 (2)	6 (2)	6 (2)	2 (1)	5 (3)	1	13 (5)	2 (1)	33 (12)	11 (4)	
0-19	0	0	0	0	1 (1)	0	0	0	1 (1)	0	
20-24	0	0	0	0	0	0	1 (1)	0	1 (1)	0	
25-29	0	0	0	0	0	0	0	0	0	0	
30-34	0	1 (1)	0	0	2 (2)	0	3 (2)	1 (1)	5 (4)	2 (2)	
35-39	2	0	1 (1)	0	0	0	1 (1)	0	4 (2)	0	
40-44	2	0	0	0	0	0	1 (1)	0	3 (1)	0	
45-49	1	1 (1)	1 (1)	0	1	0	3	0	6 (1)	1 (1)	
50-54	2 (1)	0	0	2 (1)	0	0	1	0	3 (1)	2 (1)	
55-59	0	0	0	0	0	0	0	0	0	0	
60-64	0	0	0	0	0	0	0	0	0	0	
65-69	0	0	2	0	1	0	1	0	4	0	
70-74	1 (1)	1	1	0	0	0	1	1	3 (1)	2	
75-79	1	0	0	0	0	0	0	0	1	0	
80+	0	3	1	0	0	1	1	0	2	4	
2007～2018年 2007-2018 Calendar year											
総計 Total	174 (19)	43 (20)	0	97 (23)	15 (10)	45 (8)	10 (7)	209 (42)	30 (16)	525 (92)	98 (53)
0-19	1 (1)	0	0	0	0	1 (1)	0	2	0	4 (2)	0
20-24	6 (4)	0	0	4 (3)	0	1 (1)	1 (1)	2 (1)	1	13 (9)	2 (1)
25-29	10 (5)	6 (5)	0	2 (1)	1 (1)	1 (1)	2 (2)	13 (3)	1 (1)	26 (10)	10 (9)
30-34	13 (3)	5 (5)	0	12 (1)	4 (3)	4 (2)	1 (1)	27 (10)	5 (3)	56 (16)	15 (12)
35-39	25 (2)	4 (3)	0	19 (6)	3 (3)	6	2 (2)	35 (8)	6 (5)	85 (16)	15 (13)
40-44	29 (1)	6 (4)	0	16 (5)	0	8 (2)	3 (1)	44 (14)	7 (5)	97 (22)	16 (10)
45-49	17 (1)	3 (3)	0	12 (5)	1 (1)	6 (1)	0	35 (5)	2	70 (12)	6 (4)
50-54	14 (1)	1	0	12 (2)	2 (1)	5	0	15 (1)	0	46 (4)	3 (1)
55-59	9	0	0	4	0	4	0	10	2 (2)	27	2 (2)
60-64	17	1	0	6	1 (1)	3	0	7	0	33	2 (1)
65-69	10	0	0	5	0	4	0	10	1	29	1
70-74	6 (1)	3	0	2	1	1	0	4	2	13 (1)	6
75-79	6	1	0	0	0	1	0	3	2	10	3
80+	11	13	0	3	2	0	1	2	1	16	17

( ): 外国人患者の再掲 Re-count of foreigners

HIV : Human Immunodeficiency Virus. M : male patients, F : female patients.

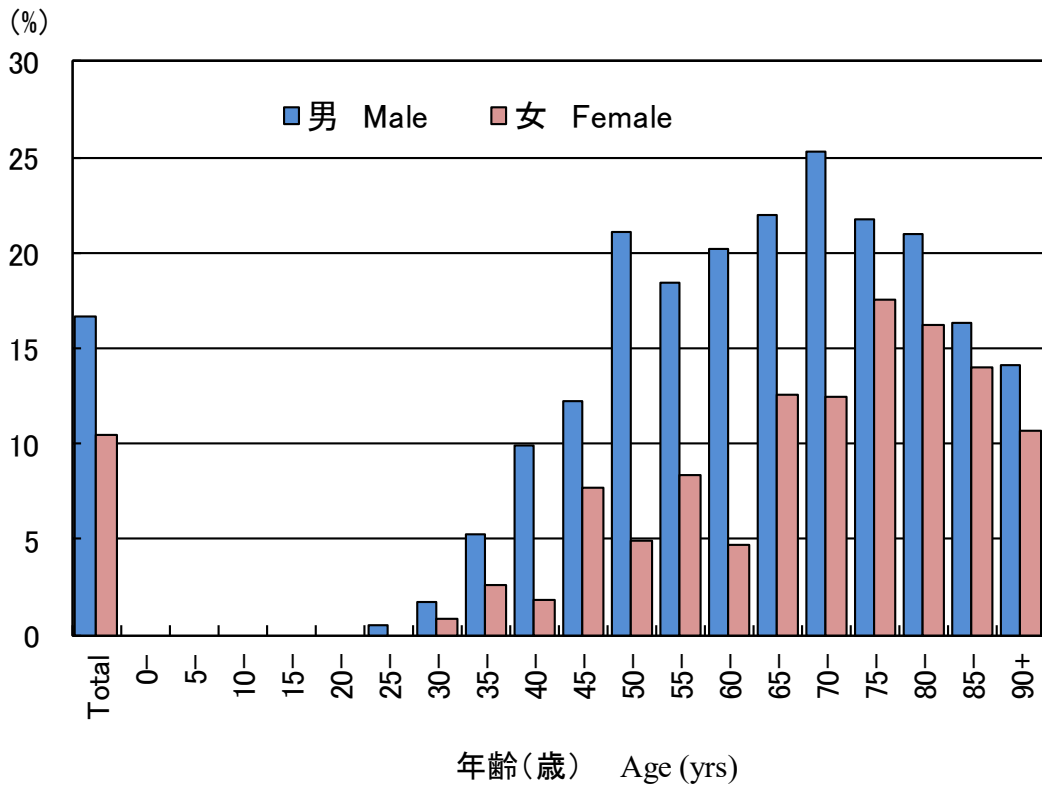


図4 新登録結核患者中「糖尿病合併あり」と報告された患者の割合、性・年齢階層別、2018年  
 Fig.4 Proportion of newly notified tuberculosis patients with diabetes mellitus in each age-group by sex, 2018



表3 新登録肺結核患者から分離培養された結核菌の抗結核薬剤感受性検査結果、治療歴別、2012～2018年  
Table 3 Drug susceptibility test results among newly notified pulmonary tuberculosis patients, by treatment history, 2012—2018

治療歴、菌検査状況、耐性状況 Treatment history, Culture examination results, Drug susceptibility test results	2012				2013				2014				2015				2016				2017				2018							
	n	%	%	%	n	%	%	%	n	%	%	%	n	%	%	%	n	%	%	%	n	%	%	%	n	%	%	%				
<b>総数 Total</b>																																
肺結核 Pulmonary tuberculosis	16,432	100%			15,972	100%			15,149	100%			14,123	100%			13,608	100%			13,011	100%			12,033	100%						
培養結果把握 Culture result obtained	14,058	85.6			13,311	83.3			12,909	85.2			12,260	86.8			12,255	90.1			11,764	90.4			11,070	92.0						
培養陽性 Culture positive	11,261	68.5	100%		10,523	65.9	100%		10,259	67.7	100%		10,035	71.1	100%		9,878	72.6	100%		9,580	73.6	100%		9,016	74.9	100%					
感受性結果把握 DST result obtained	8,347		74.1	100%	7,701		73.2	100%	7,645		74.5	100%	7,630		76.0	100%	7,732		78.3	100%	7,891		82.4	100%	7,570		84.0	100%				
多剤耐性 MDR	60			0.7	47			0.6	56			0.7	48			0.6	49			0.6	52			0.7	55			0.7				
INH 耐性 Any INH resistance	380			4.6	369			4.8	349			4.6	372			4.9	369			4.8	383			4.9	377			5.0				
RFP耐性 Any RFP resistance	73			0.9	64			0.8	76			1.0	77			1.0	74			1.0	80			1.0	87			1.1				
1剤以上耐性 Any resistance*	810			9.7	757			9.8	749			9.8	767			10.1	741			9.6	853			10.8	781			10.3				
<b>初回治療 New treatment</b>																																
肺結核 Pulmonary tuberculosis	15,040	100%			14,727	100%			13,956	100%			13,102	100%			12,686	100%			12,174	100%			11,298	100%						
培養結果把握 Culture result obtained	12,882	85.7			12,279	83.4			11,897	85.2			11,394	87.0			11,435	90.1			11,018	90.5			10,405	92.1						
培養陽性 Culture positive	10,379	69.0	100%		9,782	66.4	100%		9,523	68.2	100%		9,379	71.6	100%		9,284	73.2	100%		9,030	74.2	100%		8,536	75.6	100%					
感受性結果把握 DST result obtained	7,676		74.0	100%	7,166		73.3	100%	7,104		74.6	100%	7,135		76.1	100%	7,278		78.4	100%	7,434		82.3	100%	7,171		84.0	100%				
多剤耐性 MDR	38			0.5	31			0.4	40			0.6	33			0.5	37			0.5	41			0.6	41			0.6				
INH 耐性 Any INH resistance	310			4.0	326			4.5	288			4.1	317			4.4	316			4.3	338			4.5	331			4.6				
RFP耐性 Any RFP resistance	46			0.6	42			0.6	58			0.8	58			0.8	56			0.8	62			0.8	68			0.9				
1剤以上耐性 Any resistance*	712			9.3	680			9.5	664			9.3	686			9.6	659			9.1	773			10.4	717			10.0				
<b>再治療 Re-treatment</b>																																
肺結核 Pulmonary tuberculosis	1,094	100%			1,013	100%			968	100%			851	100%			735	100%			660	100%			575	100%						
培養結果把握 Culture result obtained	959	87.7			852	84.1			848	87.6			732	86.0			665	90.5			605	91.7			532	92.5						
培養陽性 Culture positive	693	63.3	100%		586	57.8	100%		591	61.1	100%		534	62.7	100%		462	62.9	100%		423	64.1	100%		365	63.5	100%					
感受性結果把握 DST result obtained	555		80.1	100%	435		74.2	100%	449		76.0	100%	412		77.2	100%	358		77.5	100%	362		85.6	100%	323		88.5	100%				
多剤耐性 MDR	22			4.0	16			3.7	15			3.3	14			3.4	12			3.4	9			2.5	11			3.4				
INH 耐性 Any INH resistance	67			12.1	35			8.0	57			12.7	49			11.9	51			14.2	36			9.9	41			12.7				
RFP耐性 Any RFP resistance	26			4.7	22			5.1	17			3.8	18			4.4	16			4.5	15			4.1	16			5.0				
1剤以上耐性 Any resistance*	94			16.9	65			14.9	79			17.6	72			17.5	70			19.6	65			18.0	58			18.0				
<b>治療歴不明 No information about treatment history</b>																																
肺結核 Pulmonary tuberculosis	298	100%			232	100%			225	100%			170	100%			187	100%			177	100%			160	100%						
培養結果把握 Culture result obtained	217	72.8			180	77.6			164	72.9			134	78.8			155	82.9			141	79.7			133	83.1						
培養陽性 Culture positive	189	63.4	100%		155	66.8	100%		145	64.4	100%		122	71.8	100%		132	70.6	100%		127	71.8	100%		115	71.9	100%					
感受性結果把握 DST result obtained	116		61.4	100%	100		64.5	100%	92		63.4	100%	83		68.0	100%	96		72.7	100%	95		74.8	100%	76		66.1	100%				
多剤耐性 MDR	0			0.0	0			0.0	1			1.1	1			1.2	0			0.0	2			2.1	3			3.9				
INH 耐性 Any INH resistance	3			2.6	8			8.0	4			4.3	6			7.2	2			2.1	9			9.5	5			6.6				
RFP耐性 Any RFP resistance	1			0.9	0			0.0	1			1.1	1			1.2	2			2.1	3			3.2	3			3.9				
1剤以上耐性 Any resistance*	4			3.4	12			12.0	6			6.5	9			10.8	12			12.5	15			15.8	6			7.9				

DST: Drug susceptibility test MDR : Multi-drug resistant, i.e., resistant to at least INH and RFP INH: isoniazid RFP: rifampicin

感受性結果は重複あり Cases having drug resistance are counted independently by drug.

\*: INH, RFP, SM EBの4剤のうちいずれかに耐性 resistant to either INH, RFP, SM, or EB

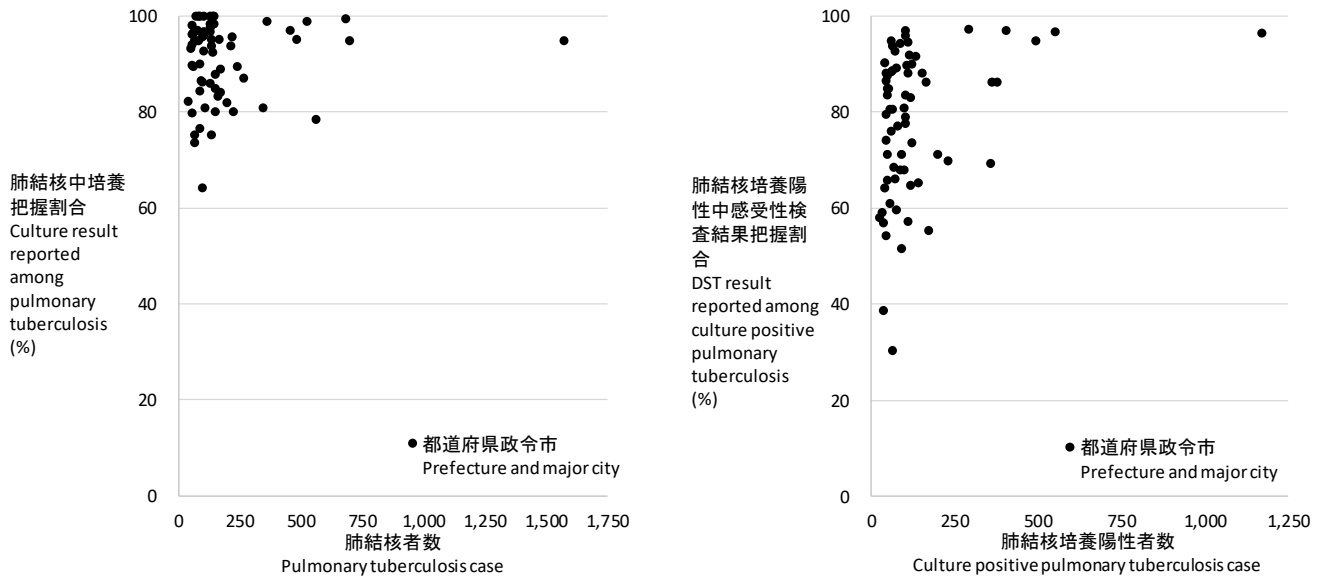
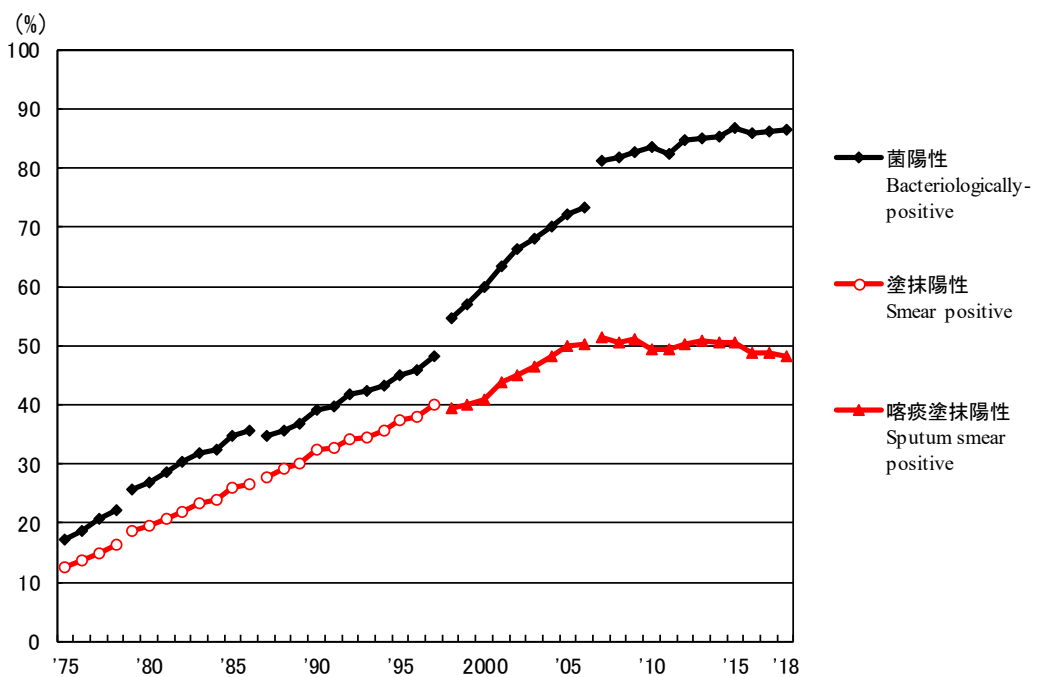


図5 新登録肺結核患者数とその内培養把握割合の散布図(左)、及び新登録肺結核培養陽性者数とその内感受性検査結果把握割合の散布図(右)、都道府県政令指定都市別、2018年

Fig. 5 Scatter plot of culture results reported among pulmonary tuberculosis patients and anti-tuberculosis drug susceptibility test results among newly notified pulmonary tuberculosis patients, by prefecture and major city, 2018



旧 図 新登録肺結核患者中菌陽性割合の推移、1975～2018年

Previous Fig

Proportion of bacteriologically confirmed cases among newly notified pulmonary tuberculosis patients, 1975-2018

資料と対象 Sources of information and subjects:

結核登録者の定期報告 Annual tuberculosis reports from public health centers

1975-1978: 全結核 All forms of tuberculosis

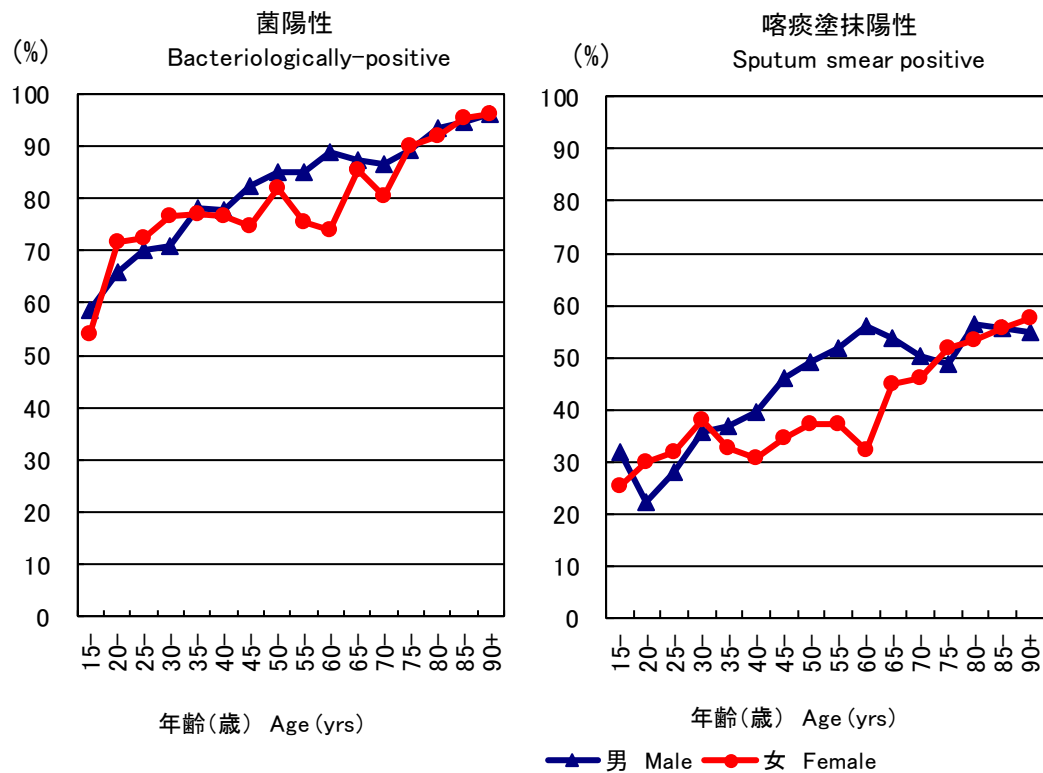
1979-1986: 肺結核 Pulmonary tuberculosis

電算化結核サーベイランスシステム Nationwide computerized tuberculosis surveillance system

1987-1997: 肺結核 Pulmonary Tuberculosis

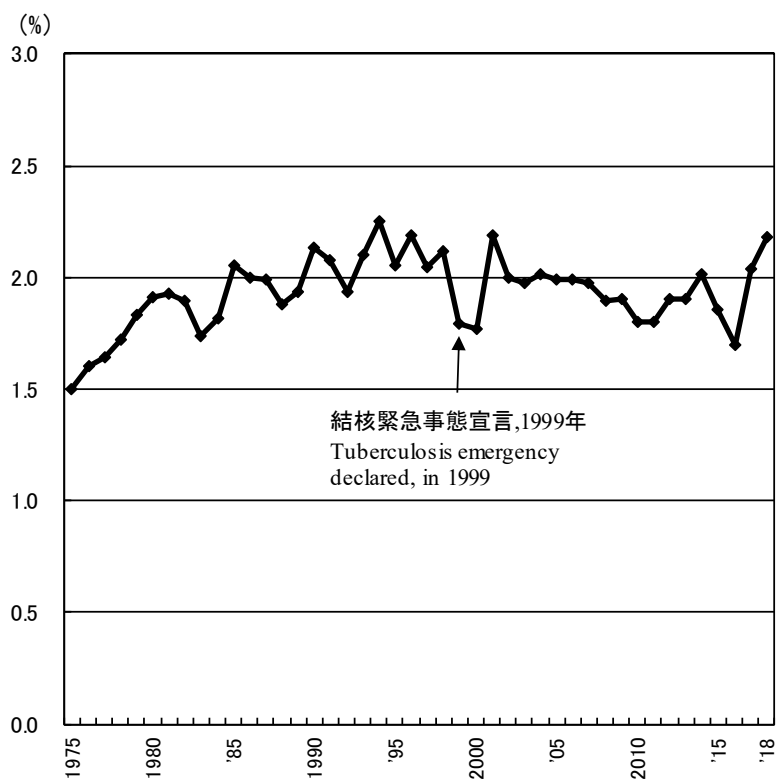
1998-2006: 肺結核(活動性分類の変更) Pulmonary tuberculosis (New patient criteria for notification were applied)

2007-2009: 肺結核(核酸増幅法項目の追加) Pulmonary tuberculosis (Item of nucleic acid amplification was added)



旧 図 新登録肺結核患者中菌陽性割合、性・年齢5歳階級別、2018年  
Previous Fig.

Proportion of bacteriologically confirmed cases among newly notified pulmonary tuberculosis patients by sex and 5-year age group, 2018



旧 図 新登録肺結核患者中胸部X線写真での広汎空洞型割合の推移、1975~2018年

Previous Fig. Proportion of far-advanced cavitory cases among newly notified pulmonary Tuberculosis patients, 1975-2018

旧表 性・職業別、30～59歳新登録肺結核患者中有空洞あるいは／かつ喀痰塗抹陽性の割合、2018年  
 Previous table Proportion of cavitory or/and sputum smear positive cases among newly notified pulmonary TB patients aged 30-59 years, 2018

	男 Male								女 Female							
	肺結核 Pulmonary TB	有空洞あるいは 喀痰塗抹陽性 Cavitory or sputum smear(+)			有空洞かつ 喀痰塗抹陽性 Cavitory and sputum smear(+)			肺結核 Pulmonary TB	有空洞あるいは 喀痰塗抹陽性 Cavitory or sputum smear(+)			有空洞かつ 喀痰塗抹陽性 Cavitory and sputum smear(+)				
		n	%	Ratio	n	%	Ratio		n	%	Ratio	n	%	Ratio		
接客業 Service workers	87	52	59.8	2.3	29	33.3	3.3	79	43	54.4	1.6	16	20.3	2.2		
医療職 Medical workers	49	13	26.5	1.0	5	10.2	1.0	183	61	33.3	1.0	17	9.3	1.0		
教員・保育士 Teachers/ Nursery nurses	13	5	38.5	1.4	1	7.7	0.8	12	4	33.3	1.0	2	16.7	1.8		
他の常用勤労者 Other regular workers	860	431	50.1	1.9	208	24.2	2.4	244	103	42.2	1.3	33	13.5	1.5		
他の臨時・日雇 Other temporary/ daily workers	110	67	60.9	2.3	45	40.9	4.0	81	52	64.2	1.9	16	19.8	2.1		
他の自営自由 Other self- employed	109	66	60.6	2.3	39	35.8	3.5	21	12	57.1	1.7	3	14.3	1.5		
無職 Jobless	241	157	65.1	2.5	95	39.4	3.9	147	65	44.2	1.3	24	16.3	1.8		
その他 Others	77	28	36.4	1.4	16	20.8	2.0	113	50	44.2	1.3	25	22.1	2.4		
総数 Total	1,546	819	53.0		438	28.3		880	390	44.3		136	15.5			

その他:家事、学生、不明 Others:Houskeepers/ Students/ Unknown

Ratio: 医療職の割合に対するその他職業の割合の比 The ratio of each proportion to that of medical workers

旧表 新登録肺結核患者の薬剤感受性検査結果、性・年齢別、2018年および2007～2018年  
 Previous table Drug susceptibility test results among newly notified pulmonary tuberculosis patients, by sex and age group, 2018 and 2007-2018

年齢 Age group	総数 Total										初回治療(再掲) New treatment (Re-count)										
	男 Male					女 Female					男 Male					女 Female					
	感受性結 果把握 DST result obtained	多剤耐 性 MDR	INH耐 性 Any resista nce	RFP耐 性 Any resista nce	1剤以 上耐性 * Any resista nce	感受性結 果把握 DST result obtained	多剤耐 性 MDR	INH耐 性 Any resista nce	RFP耐 性 Any resista nce	1剤以 上耐性 * Any resista nce	感受性 結果把 握 DST result obtained	多剤耐 性 MDR	INH耐 性 Any resista nce	RFP耐 性 Any resista nce	1剤以 上耐性 * Any resista nce	感受性 結果把 握 DST result obtained	多剤耐 性 MDR	INH耐 性 Any resista nce	RFP耐 性 Any resista nce	1剤以 上耐性 * Any resista nce	
2018年 2018 Calendar year	総数 Total	4,732	28	234	57	507	2,838	27	143	30	274	4,461	20	205	44	462	2,710	21	126	24	255
	0-19	37	0	2	2	12	29	0	1	0	2	35	0	2	2	12	26	0	1	0	2
	20-29	323	8	34	11	59	256	10	21	11	40	305	5	30	6	52	246	7	17	8	36
	30-39	211	5	19	6	35	191	9	25	9	34	203	5	19	6	34	186	7	22	7	31
	40-49	323	3	17	7	36	151	1	8	1	16	310	3	15	7	34	145	1	8	1	16
	50-59	414	5	23	12	55	146	1	14	3	23	391	1	17	8	49	135	0	11	2	19
	60-69	683	2	27	8	71	206	5	16	5	25	638	2	22	7	62	195	5	14	5	23
	70-79	947	0	46	3	104	452	1	24	1	48	902	0	40	2	96	436	1	24	1	48
	80+	1,794	5	66	8	135	1,407	0	34	0	86	1,677	4	60	6	123	1,341	0	29	0	80
2007～2018年 2007-2018 Calendar year	総数 Total	56,378	415	2,856	612	6,577	29,989	234	1,342	316	2,987	51,413	272	2,357	412	5,747	28,243	150	1,112	216	2,646
	0-19	431	10	40	12	86	357	2	30	3	69	412	7	37	9	83	338	2	28	3	64
	20-29	2,951	63	237	81	515	2,514	65	201	85	425	2,821	47	210	60	478	2,406	46	176	62	389
	30-39	3,297	30	219	46	511	2,537	41	181	54	372	3,124	24	206	40	482	2,440	32	162	41	341
	40-49	4,423	39	241	62	599	2,151	21	107	31	264	4,153	29	216	44	540	2,046	13	95	22	242
	50-59	6,180	56	345	93	890	1,787	23	93	33	209	5,742	33	298	60	801	1,682	9	71	18	181
	60-69	9,677	62	508	109	1,255	2,639	18	131	23	313	8,875	42	420	73	1,090	2,481	12	105	16	273
	70-79	12,198	85	632	116	1,453	5,308	26	224	34	526	10,976	45	483	65	1,227	4,931	12	185	17	465
	80+	17,221	70	634	93	1,268	12,696	38	375	53	809	15,310	45	487	61	1,046	11,919	24	290	37	691
2007～2018年 2007-2018 Calendar year	総数 Total	100%	0.7	5.1	1.1	11.7	100%	0.8	4.5	1.1	10.0	100%	0.5	4.6	0.8	11.2	100%	0.5	3.9	0.8	9.4
	0-19	100	2.3	9.3	2.8	20.0	100	0.6	8.4	0.8	19.3	100	1.7	9.0	2.2	20.1	100	0.6	8.3	0.9	18.9
	20-29	100	2.1	8.0	2.7	17.5	100	2.6	8.0	3.4	16.9	100	1.7	7.4	2.1	16.9	100	1.9	7.3	2.6	16.2
	30-39	100	0.9	6.6	1.4	15.5	100	1.6	7.1	2.1	14.7	100	0.8	6.6	1.3	15.4	100	1.3	6.6	1.7	14.0
	40-49	100	0.9	5.4	1.4	13.5	100	1.0	5.0	1.4	12.3	100	0.7	5.2	1.1	13.0	100	0.6	4.6	1.1	11.8
	50-59	100	0.9	5.6	1.5	14.4	100	1.3	5.2	1.8	11.7	100	0.6	5.2	1.0	13.9	100	0.5	4.2	1.1	10.8
	60-69	100	0.6	5.2	1.1	13.0	100	0.7	5.0	0.9	11.9	100	0.5	4.7	0.8	12.3	100	0.5	4.2	0.6	11.0
	70-79	100	0.7	5.2	1.0	11.9	100	0.5	4.2	0.6	9.9	100	0.4	4.4	0.6	11.2	100	0.2	3.8	0.3	9.4
	80+	100	0.4	3.7	0.5	7.4	100	0.3	3.0	0.4	6.4	100	0.3	3.2	0.4	6.8	100	0.2	2.4	0.3	5.8

DST: Drug susceptibility test. MDR: Multi-drug resistance, i.e., resistant to at least INH and RFP. INH: Isoniazid. RFP: Rifampicin.

\*: 2012年以降はINH, RFP, SM EBの4剤のうちのいずれかに耐性

旧表 新登録肺結核患者の薬剤感受性検査結果および耐性率、性・年齢別、2007～2018年（再掲；外国人）

Previous table Drug susceptibility test results among newly notified pulmonary tuberculosis patients, by sex and age group, 2007-2018 (Re-count of foreigners)

年齢 Age group	総数 Total										初回治療(再掲) New treatment (Re-count)									
	男 Male					女 Female					男 Male				女 Female					
	感受性結果 把握 DST result obtained	多剤耐性 MDR	INH耐性 Any resistance	RFP耐性 Any resistance	1剤以上耐性* Any resistance	感受性結果 把握 DST result obtained	多剤耐性 MDR	INH耐性 Any resistance	RFP耐性 Any resistance	1剤以上耐性* Any resistance	感受性結果 把握 DST result obtained	多剤耐性 MDR	INH耐性 Any resistance	RFP耐性 Any resistance	1剤以上耐性* Any resistance	感受性結果 把握 DST result obtained	多剤耐性 MDR	INH耐性 Any resistance	RFP耐性 Any resistance	1剤以上耐性* Any resistance
2007～2018年	2007-2018 Calendar year																			
総数 Total	2144	84	252	104	412	2212	99	277	123	441	2034	57	215	75	369	2102	74	243	93	395
0-19	132	9	28	11	43	81	1	11	2	15	127	6	25	8	40	78	1	10	2	14
20-29	1,123	54	140	66	223	1,021	57	136	72	229	1,073	39	118	48	199	983	42	118	54	206
30-39	361	13	38	18	65	553	25	82	28	113	345	11	36	16	61	527	20	75	22	104
40-49	179	5	17	6	32	283	6	22	8	41	167	1	12	1	25	265	3	19	4	36
50-59	116	1	6	1	11	129	5	17	7	25	110	0	5	0	10	116	4	13	6	19
60-69	101	2	13	2	24	59	2	5	3	8	91	2	11	2	22	56	2	5	3	8
70-79	67	0	6	0	7	36	3	4	3	6	61	0	5	0	6	30	2	3	2	4
80+	65	0	4	0	7	50	0	0	0	4	60	0	3	0	6	47	0	0	0	4
2007～2018年	2007-2018 Calendar year																			
総数 Total	100%	3.9	11.8	4.9	19.2	100%	4.5	12.5	5.6	19.9	100%	2.8	10.6	3.7	18.1	100%	3.5	11.6	4.4	18.8
0-19	100	6.8	21.2	8.3	32.6	100	1.2	13.6	2.5	18.5	100	4.7	19.7	6.3	31.5	100	1.3	12.8	2.6	17.9
20-29	100	4.8	12.5	5.9	19.9	100	5.6	13.3	7.1	22.4	100	3.6	11.0	4.5	18.5	100	4.3	12.0	5.5	21.0
30-39	100	3.6	10.5	5.0	18.0	100	4.5	14.8	5.1	20.4	100	3.2	10.4	4.6	17.7	100	3.8	14.2	4.2	19.7
40-49	100	2.8	9.5	3.4	17.9	100	2.1	7.8	2.8	14.5	100	0.6	7.2	0.6	15.0	100	1.1	7.2	1.5	13.6
50-59	100	0.9	5.2	0.9	9.5	100	3.9	13.2	5.4	19.4	100	0.0	4.5	0.0	9.1	100	3.4	11.2	5.2	16.4
60-69	100	2.0	12.9	2.0	23.8	100	3.4	8.5	5.1	13.6	100	2.2	12.1	2.2	24.2	100	3.6	8.9	5.4	14.3
70-79	100	0.0	9.0	0.0	10.4	100	8.3	11.1	8.3	16.7	100	0.0	8.2	0.0	9.8	100	6.7	10.0	6.7	13.3
80+	100	0.0	6.2	0.0	10.8	100	0.0	0.0	0.0	8.0	100	0.0	5.0	0.0	10.0	100	0.0	0.0	0.0	8.5

DST: Drug susceptibility test. MDR: Multi-drug resistance, i. e., resistant to at least INH and RFP. INH: Isoniazid. RFP: Rifampicin.

\*: 2012年はINH, RFP, SM EBの4剤のうちのいずれかに耐性