

【治療 1】

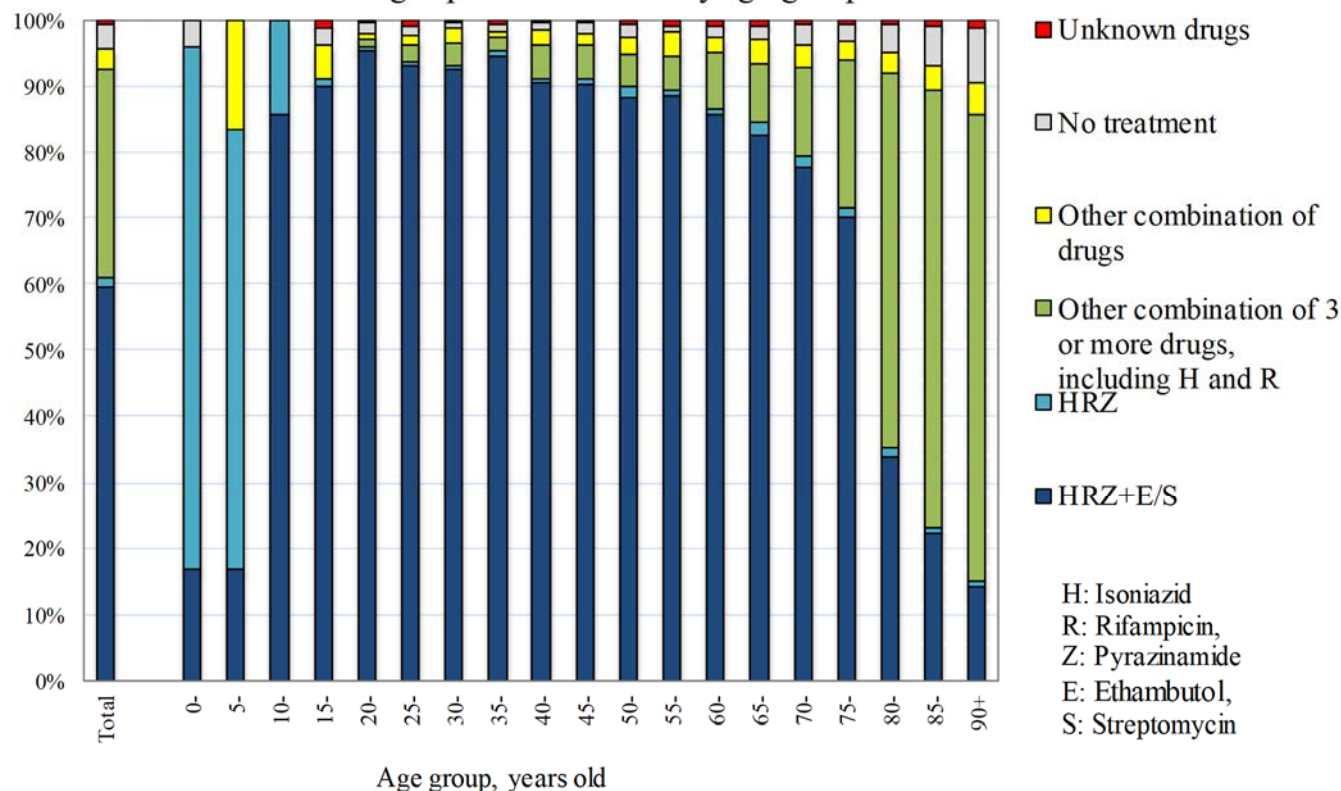
Table 1 再治療患者の年齢階層別・前回治療開始年別患者数、2018

Number of patients with TB on re-treatment, by year when previous TB treatment was initiated and age group, 2018

Year when previous TB treatment initiated	Total	Age group (years)								Previous TB treatment regimen unknown (re-count)
		0-19	20-29	30-39	40-49	50-59	60-69	70-79	80+	
Total	732	9	45	39	57	72	109	137	264	189
~1949	36	0	0	0	0	0	0	2	34	23
1950-59	79	0	0	0	0	0	3	12	64	40
1960-69	57	0	0	0	0	1	6	25	25	39
1970-79	19	0	0	0	0	1	8	6	4	12
1980-89	14	0	0	0	0	3	4	2	5	11
1990-99	32	0	2	1	7	7	2	6	7	11
2000-09	89	2	3	7	14	13	15	18	17	20
2010-17	406	7	40	31	36	47	71	66	108	33
2005-2017 (re-count)										
2005	7	0	0	1	1	1	1	3	0	1
2006	13	0	0	0	3	4	0	3	3	5
2007	9	0	1	2	0	1	2	1	2	1
2008	11	0	0	0	2	3	2	2	2	3
2009	12	0	0	2	1	0	3	3	3	1
2010	21	0	1	3	3	3	4	2	5	1
2011	18	0	2	2	2	2	2	1	7	3
2012	24	1	2	0	1	2	3	8	7	3
2013	29	2	2	2	2	5	11	2	3	4
2014	33	1	0	1	1	7	8	3	12	2
2015	57	2	4	5	2	6	7	10	21	6
2016	95	0	9	9	10	11	13	15	28	8
2017	98	0	14	7	6	8	21	19	23	5
2018	31	1	6	2	9	3	2	6	2	1

TB: tuberculosis

Fig.1 新登録結核患者の年齢階層別治療開始時化学療法内容、2018
Anti-tuberculosis drugs upon notification by age group in 2018



旧表 再治療者の年齢階層別前回治療内容別患者数、2018年

Previous table Number of retreatment tuberculosis patients by previous tuberculosis treatment regimen and age group, 2018

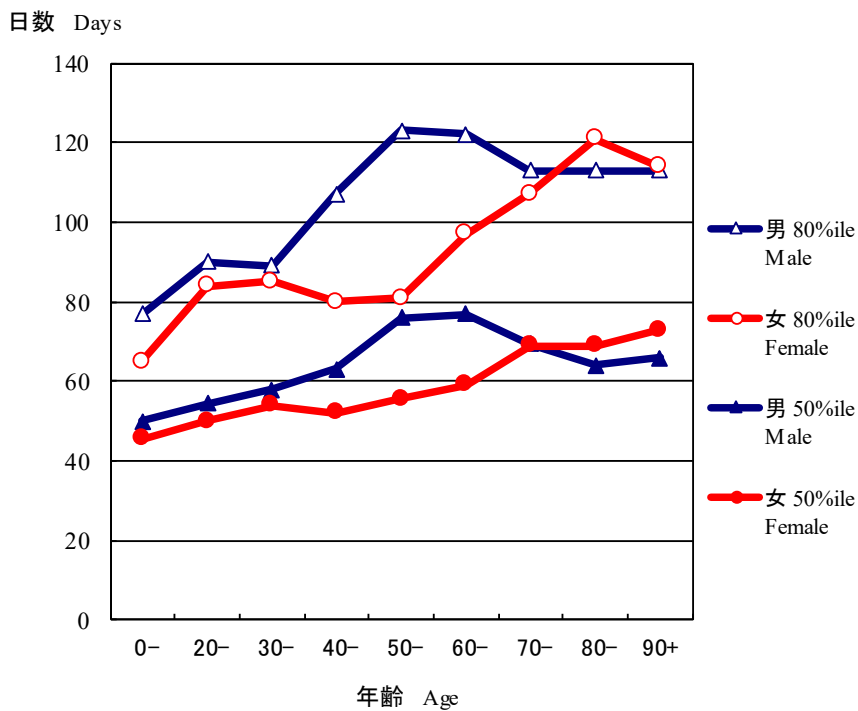
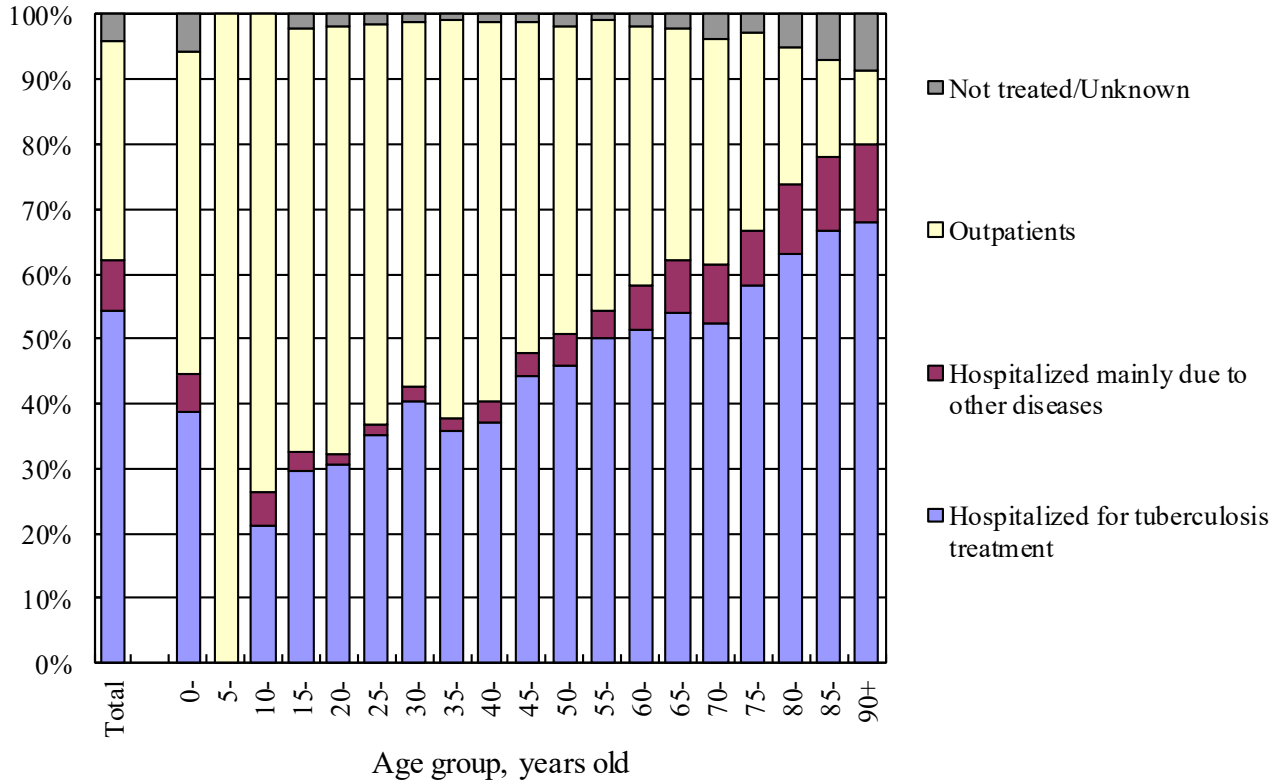
年齢 Age group	再治療者 Retreatment	前回治療内容 Previous treatment regimen					不明 Unknown
		HRZ含む治療 Regimen with HRZ	他HR含む治療 Other regimen with HR	その他治療 Other regimen	潜在性結核治療 LTBI treatment		
総数 Total	732	224	147	87	85	189	
0-4	0	0	0	0	0	0	
5-9	0	0	0	0	0	0	
10-14	0	0	0	0	0	0	
15-19	9	1	1	0	6	1	
20-24	21	12	0	0	7	2	
25-29	24	14	2	0	3	5	
30-34	26	13	4	1	3	5	
35-39	13	4	2	1	4	2	
40-44	22	10	5	0	4	3	
45-49	35	15	4	1	10	5	
50-54	37	17	4	1	8	7	
55-59	35	14	8	3	5	5	
60-64	38	17	7	2	3	9	
65-69	71	27	9	6	12	17	
70-74	57	20	12	7	4	14	
75-79	80	26	13	13	6	22	
80-84	100	20	24	23	7	26	
85-89	106	8	34	17	2	45	
90+	58	6	18	12	1	21	

H : Isoniazid, R : Rifampicin, Z : Pyrazinamide

LTBI : Latent Tuberculosis Infection

【治療 2】

Fig.2 新登録肺結核患者の治療開始時受療状況別割合、年齢階層別、2018
 Proportion of the outpatients and the hospitalized patients by age group in 2018(N=12,033)



旧図 治療開始時結核を主たる理由に入院かつ退院時期情報があった者について、性・年齢階層別入院期間（中央値および80パーセントイル値）、2017年新登録肺結核喀痰塗抹陽性初回治療者

Previous Fig. Median (50 percentile) and 80 percentile of duration of hospitalization among those hospitalized with tuberculosis and with known discharged day, new sputum-smear positive pulmonary tuberculosis patients in 2017 by sex and age group

旧表 年齢階層別治療開始時入院あるいは他疾患入院の割合(%)、総合患者分類別、2018年新登録結核患者
 Previous table Proportion (%) hospitalized among newly notified tuberculosis patients in 2018 by age group and patient classification

年齢 Age	肺結核 Pulmonary TB									
	計 Total		喀痰塗抹陽性 Sputum smear positive		その他の結核菌陽性 Other bacillary positive		菌陰性・その他 Bacillary negative /unknown		肺外結核 Extra-pulmonary	
	入院 Ht	他入院 Ho	入院 Ht	他入院 Ho	入院 Ht	他入院 Ho	入院 Ht	他入院 Ho	入院 Ht	他入院 Ho
総数 Total	48.5	11.1	90.6	2.4	25.7	13.5	7.7	11.0	28.7	22.4
0-19	0.4	0.1	0.6	0.0	0.2	0.0	0.5	0.2	0.3	0.1
20-29	2.5	0.2	4.7	0.0	1.4	0.2	1.0	0.3	0.9	0.4
30-39	1.9	0.2	4.2	0.0	0.5	0.2	0.5	0.3	0.7	0.6
40-49	2.3	0.4	5.1	0.1	0.7	0.4	0.2	0.4	0.7	0.8
50-59	3.1	0.6	6.6	0.1	1.0	0.5	0.4	0.9	1.5	1.3
60-69	5.1	1.1	10.9	0.2	1.9	1.3	0.5	1.7	2.1	1.9
70-79	9.2	2.5	17.3	0.6	4.6	2.5	1.6	2.9	5.3	5.4
80-89	16.8	4.4	28.7	0.9	10.3	5.7	2.3	3.6	12.3	8.6
90+	7.3	1.8	12.4	0.5	5.1	2.7	0.6	0.8	4.8	3.1

入院: 結核を主たる理由に入院 Ht: Hospitalized for tuberculosis treatment

他入院: 結核以外の他疾患の治療を主たる理由に入院 Ho: Hospitalized mainly due to other diseases

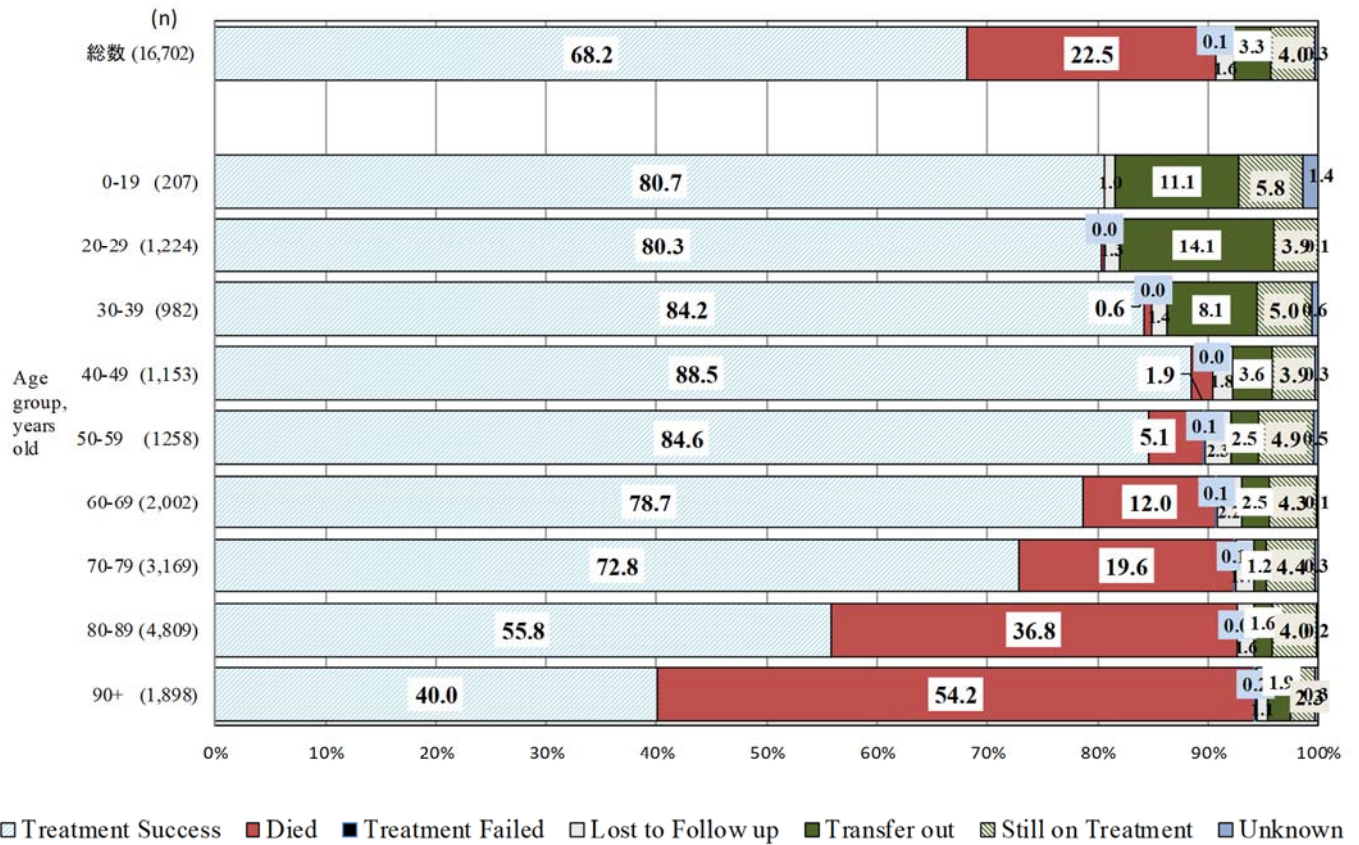
【治療成績】

Table 2 2016,2017年における新登録結核患者と潜在性結核感染症登録患者の次年末時登録除外状況および除外理由、総合患者分類別
 Patients deleted from tuberculosis registration by the end of years (in 2017 and in 2018)
 - Patients with tuberculosis patients and LTBI notified in the previous years (in 2016 and in 2017, respectively) -

	Newly notified patients with tuberculosis															
	Patients with pulmonary tuberculosis										Patients with LTBI					
	Total (%)	Sub-total (pulmonary tuberculosis) (%)		Sputum-smear positive		Other bacteriologically positive (%)	Bacteriologically negative and others (%)		extra-pulmonary tuberculosis (%)	(Not included in the total) (%)						
			New (%)	Re-treatment (%)												
Newly notified tuberculosis cases in 2016*	17,539	(100)	13,579	(100)	6,291	(100)	365	(100)	5,031	(100)	1,892	(100)	3,960	(100)	7,454	(100)
Total number of patients deleted from tuberculosis registration by the end of 2017	5,584	(31.8)	4,432	(32.6)	2,422	(38.5)	132	(36.2)	1,469	(29.2)	409	(21.6)	1,152	(29.1)	3,089	(41.4)
No need for post-treatment follow-up	27	(0.2)	13	(0.1)	4	(0.1)	1	(0.3)	3	(0.1)	5	(0.3)	14	(0.4)	2,385	(32.0)
Died	4,411	(25.1)	3,476	(25.6)	2,041	(32.4)	108	(29.6)	1,127	(22.4)	200	(10.6)	935	(23.6)	219	(2.9)
Tuberculosis-related death	1,321	(7.5)	1,077	(7.9)	808	(12.8)	41	(11.2)	188	(3.7)	40	(2.1)	244	(6.2)	1	(0.0)
Other causes of death	3,090	(17.6)	2,399	(17.7)	1,233	(19.6)	67	(18.4)	939	(18.7)	160	(8.5)	691	(17.4)	218	(2.9)
Transfer out	1,036	(5.9)	857	(6.3)	336	(5.3)	19	(5.2)	312	(6.2)	190	(10.0)	179	(4.5)	373	(5.0)
Register during follow-up	83	(0.5)	66	(0.5)	36	(0.6)	4	(1.1)	17	(0.3)	9	(0.5)	17	(0.4)	61	(0.8)
Other reasons	27	(0.2)	20	(0.1)	5	(0.1)	0	(0.0)	10	(0.2)	5	(0.3)	7	(0.2)	51	(0.7)
Newly notified tuberculosis cases in 2017**	16,702	(100)	12,973	(100)	6,030	(100)	331	(100)	4,887	(100)	1,725	(100)	3,729	(100)	7,239	(100)
Total number of patients deleted from tuberculosis registration by the end of 2018	5,427	(32.5)	4,247	(32.7)	2,279	(37.8)	104	(31.4)	1,469	(30.1)	395	(22.9)	1,180	(31.6)	3,817	(52.7)
No need for post-treatment follow-up	44	(0.3)	18	(0.1)	5	(0.1)	1	(0.3)	9	(0.2)	3	(0.2)	26	(0.7)	3,150	(43.5)
Died	4,261	(25.5)	3,314	(25.5)	1,902	(31.5)	82	(24.8)	1,125	(23.0)	205	(11.9)	947	(25.4)	244	(3.4)
Tuberculosis-related death	1,322	(7.9)	1,077	(8.3)	810	(13.4)	23	(6.9)	211	(4.3)	33	(1.9)	245	(6.6)	2	(0.0)
Other causes of death	2,939	(17.6)	2,237	(17.2)	1,092	(18.1)	59	(17.8)	914	(18.7)	172	(10.0)	702	(18.8)	242	(3.3)
Transfer out	1,017	(6.1)	825	(6.4)	333	(5.5)	13	(3.9)	309	(6.3)	170	(9.9)	192	(5.1)	324	(4.5)
Register during follow-up	80	(0.5)	69	(0.5)	34	(0.6)	6	(1.8)	20	(0.4)	9	(0.5)	11	(0.3)	49	(0.7)
Other reasons	25	(0.1)	21	(0.2)	5	(0.1)	2	(0.6)	6	(0.1)	8	(0.5)	4	(0.1)	50	(0.7)

* Based on the annual report database in 2017. ** Based on the annual report database in 2018.

LTBI : Latent Tuberculosis Infection



2017年新登録患者の2018年末治療成績 (%)

Fig. 3 Treatment outcomes of newly notified tuberculosis patients by age group, 2017 year cohort (%)

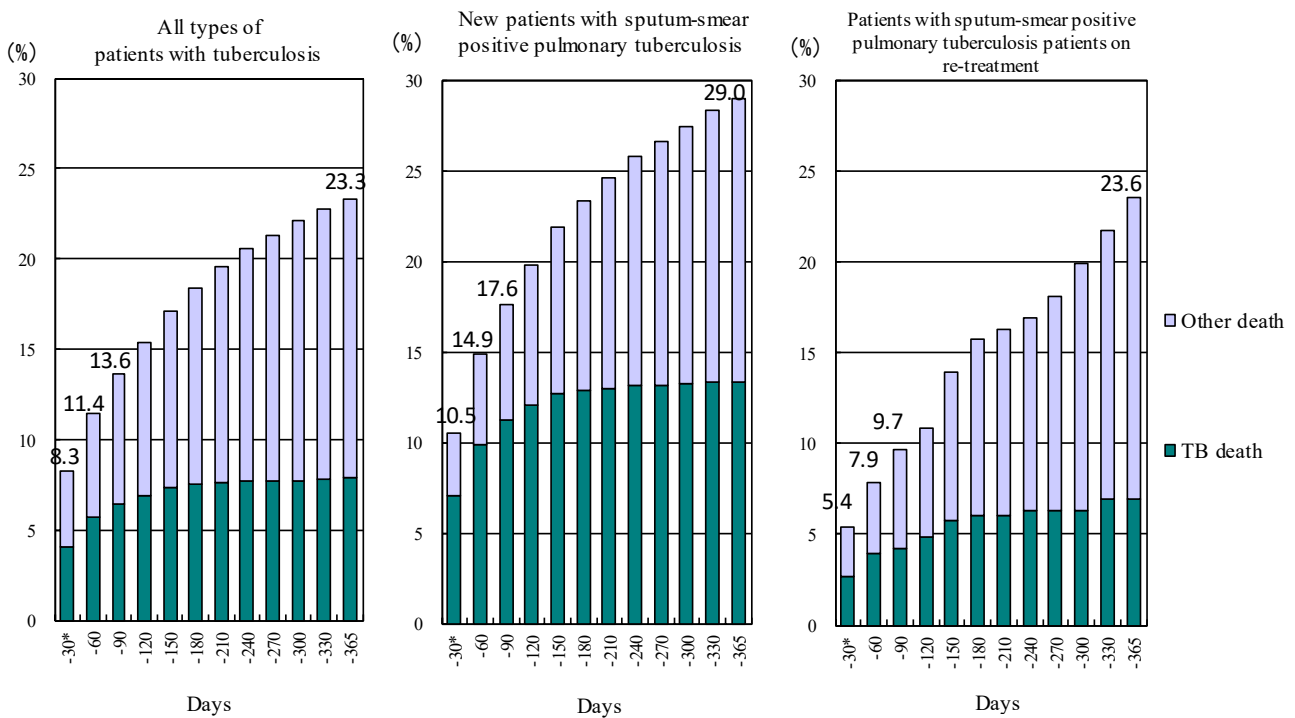


Fig. 4 2017年新登録結核患者中治療開始後1年以内死亡者の時期別・死因別累積死亡割合 (%)

Cumulative proportion of deaths by duration of treatment - Newly notified patients with tuberculosis in 2017

* Includes patients who died before the commencement of treatment.

TB: tuberculosis