

【概況】

人口10万対率  
Rate per 100,000

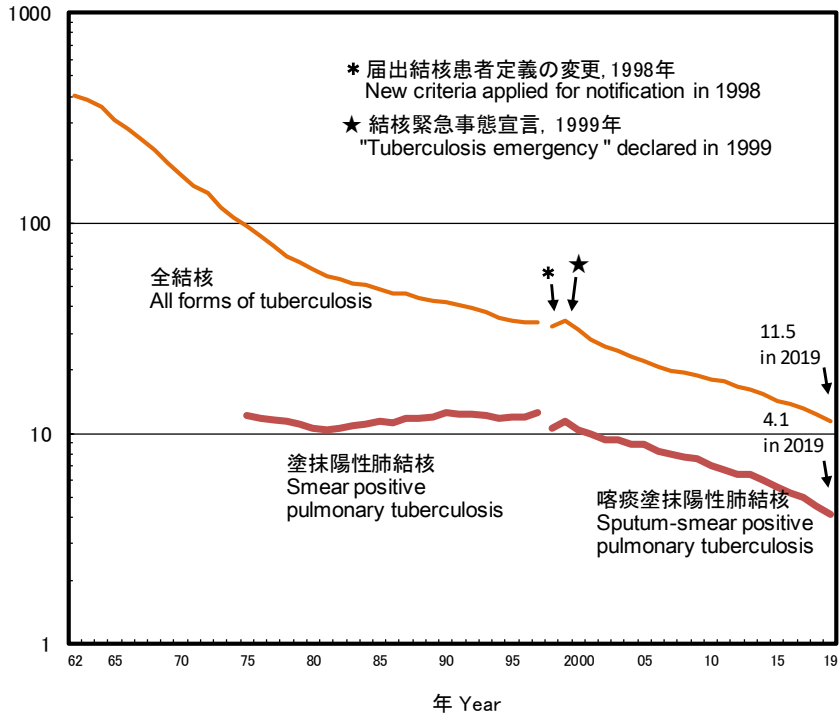


図 1 人口10万対年間新結核患者登録数(登録率)の年次推移, 1962~2019年  
Fig. 1 Annual trend of tuberculosis notification rate (all forms, sputum-smear positive pulmonary tuberculosis) per 100,000 population in Japan, 1962-2019

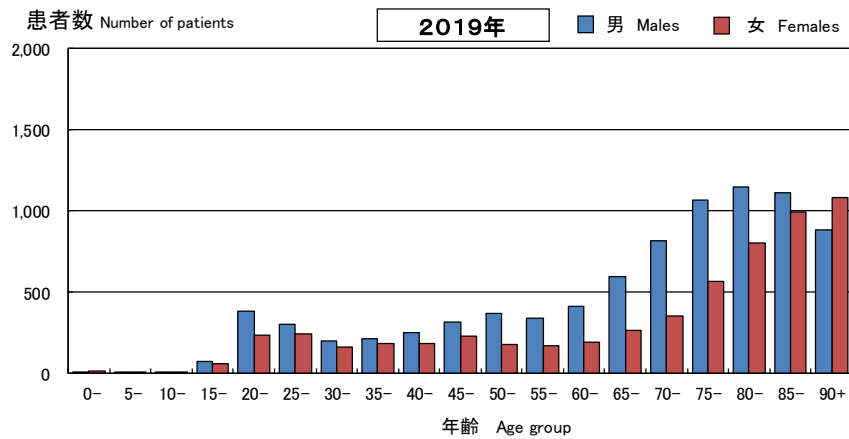
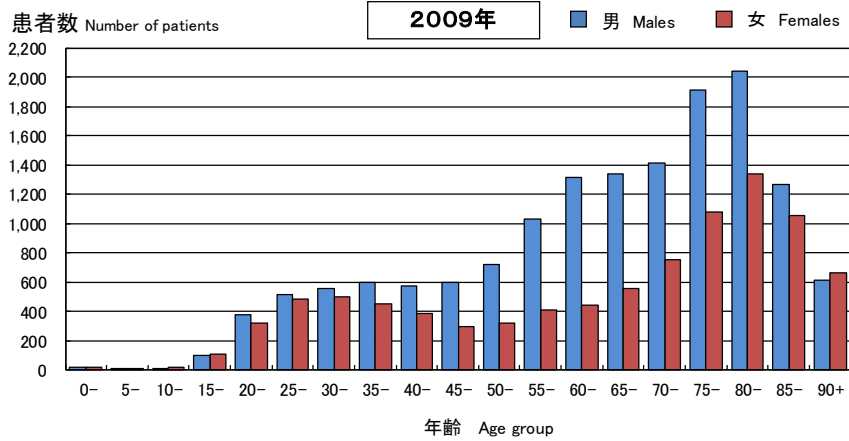


図 2 新登録結核患者数の年齢分布, 性別, 2009年・2019年  
Fig. 2 Age distribution of newly notified tuberculosis patients by sex in Japan, in 2009 and in 2019

表 1 新登録結核患者数(全結核、初回治療・再治療別、肺結核・肺外結核別), 年齢階層別, 2013~2019年

Table 1 Number of newly notified tuberculosis patients (all forms, new and re-treatment, pulmonary and extra-pulmonary), by age group, in Japan, 2013-2019

年齢階層 Age group	新登録全結核患者数 Tuberculosis notifications, all forms (*1)		新全結核患者登録率(罹患率) Tuberculosis notification rates, all forms (*2)		初回治療結核 New tuberculosis																																												
					肺結核 Pulmonary tuberculosis															菌検査結果不明 Bacteriological test results unknown					肺外結核 Extra-pulmonary tuberculosis																								
					喀痰塗抹陽性肺結核 Sputum-smear positive					喀痰塗抹陰性肺結核 Sputum-smear negative																																							
										その他菌陽性肺結核 Other bacteriologically positive					喀痰塗抹陰性・他肺結核 Other sputum-smear negative																																		
2013	2014	2015	2016	2017	2018	2019	2013	2014	2015	2016	2017	2018	2019	2013	2014	2015	2016	2017	2018	2019	2013	2014	2015	2016	2017	2018	2019	2013	2014	2015	2016	2017	2018	2019															
総数 Total	20,495	19,615	18,280	17,625	16,789	15,590	14,460	16.1	15.4	14.4	13.9	13.3	12.3	11.5	7,584	7,153	6,676	6,281	6,031	5,485	####	5,174	4,937	4,819	4,777	4,645	4,417	4,193	2,041	1,918	1,638	1,709	1,588	1,474	1,322	160	173	139	106	87	82	71	4,274	4,255	3,976	3,844	3,599	3,400	3,241
0-14	66	49	51	59	59	51	38	0.4	0.3	0.3	0.4	0.4	0.3	0.2	0	1	2	2	4	4	0	14	11	12	12	8	7	6	26	18	17	20	24	27	18	1	4	2	5	5	4	1	20	13	16	18	13	9	13
15-19	165	168	163	190	148	158	142	2.7	2.8	2.8	3.1	2.5	2.7	2.4	44	31	40	45	40	39	38	37	54	47	48	47	34	43	45	50	37	69	44	54	39	4	4	3	4	1	2	0	21	15	29	14	16	20	19
20-29	1,196	1,188	1,127	1,235	1,231	1,273	1,164	9.1	9.2	9.0	9.8	9.8	10.1	9.2	345	321	277	269	279	278	285	346	356	378	420	423	444	414	302	277	271	320	294	311	232	15	18	12	19	13	10	8	144	164	151	160	180	185	190
30-39	1,317	1,235	1,101	1,004	987	885	767	7.9	7.7	7.1	6.5	6.6	6.0	5.4	393	323	327	269	289	250	194	379	371	313	320	298	276	256	261	255	202	207	171	163	133	17	16	12	7	8	4	6	200	202	192	157	178	153	141
40-49	1,496	1,440	1,363	1,228	1,159	1,034	985	8.3	7.8	7.5	6.5	6.1	5.5	5.3	495	453	426	363	348	307	287	418	416	396	360	373	306	301	227	229	188	198	169	157	149	16	20	20	12	8	5	10	266	234	243	228	186	202	182
50-59	1,665	1,514	1,351	1,295	1,268	1,150	1,054	10.8	9.8	8.8	8.4	8.1	7.2	6.5	606	550	501	433	414	394	340	429	366	357	380	381	308	290	207	187	156	151	164	134	147	15	24	14	6	8	3	7	270	277	234	243	219	239	199
60-69	2,833	2,597	2,359	2,213	2,024	1,704	1,472	15.4	14.3	13.1	12.0	11.4	10.0	9.1	1,045	936	858	792	756	638	494	716	656	616	566	536	455	431	283	253	241	205	203	171	159	29	23	20	26	14	9	12	556	547	476	498	408	322	289
70-79	4,359	4,028	3,757	3,407	3,187	2,995	2,810	31.4	28.4	26.9	24.5	22.0	19.7	17.6	1,572	1,465	1,323	1,184	1,169	1,049	976	1,064	961	966	856	830	809	796	340	297	257	258	236	232	177	30	30	26	6	16	25	12	1,081	1,017	974	917	771	743	695
80-89	5,856	5,753	5,317	5,138	4,822	4,534	4,061	76.2	72.5	66.0	60.8	55.5	51.2	45.4	2,426	2,389	2,194	2,095	1,904	1,758	####	1,392	1,309	1,289	1,321	1,267	1,229	1,094	290	290	216	228	217	179	199	32	30	23	19	10	15	14	1,354	1,401	1,280	1,219	1,192	1,147	1,082
90+	1,542	1,643	1,691	1,856	1,904	1,806	1,967	95.6	95.7	92.0	96.3	92.7	82.8	85.2	658	684	728	829	828	768	839	379	437	445	494	482	549	562	60	62	53	53	66	46	69	1	4	7	2	4	5	1	382	385	381	390	436	380	431

\*1: All forms include new and re-treatment tuberculosis patients.

\*2: 人口10万対率 Rate per 100,000 population

年齢階層 Age group	喀痰塗抹陽性肺結核 Sputum-smear positive		再治療結核 Re-treatment tuberculosis															菌検査結果不明 Bacteriological test results unknown					肺外結核 Extra-pulmonary tuberculosis												
			肺結核 Pulmonary tuberculosis																																
			喀痰塗抹陰性肺結核 Sputum-smear negative																																
			その他菌陽性肺結核 Other bacteriologically positive					喀痰塗抹陰性・他肺結核 Other sputum-smear negative																											
2013	2014	2015	2016	2017	2018	2019	2013	2014	2015	2016	2017	2018	2019	2013	2014	2015	2016	2017	2018	2019	2013	2014	2015	2016	2017	2018	2019								
総数 Total	535	498	455	361	328	296	265	296	296	264	249	223	188	189	163	157	119	115	99	85	80	19	17	13	10	10	6	8	249	211	181	173	179	157	125
0-14	0	0	0	1	0	0	0	1	0	0	0	1	0	0	3	1	1	1	1	0	0	0	0	1	0	2	0	0	1	1	0	0	1	0	0
15-19	5	5	1	2	0	1	0	1	3	2	5	0	4	0	5	5	3	0	0	3	2	1	1	0	1	0	1	0	2	0	1	2	0	0	1
20-29	12	8	15	13	10	18	11	16	15	12	11	15	11	13	7	20	9	9	6	6	3	2	1	0	1	1	1	1	7	8	2	13	10	9	7
30-39	19	18	21	13	16	9	5	13	14	20	12	7	11	12	15	12	2	10	6	8	8	1	2	0	0	1	1	1	19	22	12	9	13	10	11
40-49	28	27	28	23	23	14	21	12	18	22	13	20	11	14	10	19	15	16	13	9	8	2	0	4	1	0	2	0	22	24	21	14	19	21	13
50-59	57	47	34	20	35	23	24	34	23	26	26	15	18	17	18	21	5	12	11	13	10	3	3	3	5	3	0	3	26	16	21	19	18	18	17
60-69	74	74	77	60	48	55	31	41	52	26	23	30	26	29	41	23	19	18	13	9	14	5	2	3	1	1	1	0	43	31	23	24	15	18	13
70-79	110	113	85	68	69	52	59	75	65	58	53	35	38	50	29	32	28	26	25	21	21	4	4	1	0	1	0	1	54	44	39	39	35	26	23
80-89	184	168	153	120	91	99	82	85	85	81	78	69	54	37	29	20	28	18	21	11	9	1	4	1	0	1	0	0	63	57	52	40	50	42	31
90+	46	38	41	41	36	25	32	18	21	17	28	31	15	17	6	4	9	5	3	5	5	0	0	0	1	0	0	2	12	8	10	13	18	13	9

表 2 新登録潜在性結核感染症登録者数、性・年齢階層別、2017～2019年  
 Table 2 Newly notified latent tuberculosis infection (LTBI) patients, by sex and age group, in Japan, from 2017 to 2019

年齢 Age group	2017年					2018年					2019年				
	総数 Total	性 Sex		割合 (%)	女/男 Ratio of F/M	総数 Total	性 Sex		割合 (%)	女/男 Ratio of F/M	総数 Total	性 Sex		割合 (%)	女/男 Ratio of F/M
		男 Males	女 Females				男 Males	女 Females				男 Males	女 Females		
総数 Total	7,255	3,374	3,881	100	1.2	7,414	3,551	3,863	100	1.1	7,684	3,707	3,977		1.1
0-4	439	195	244	6.1	1.3	425	182	243	5.7	1.3	411	181	230	5.3	1.3
5-9	119	59	60	1.6	1.0	103	51	52	1.4	1.0	62	27	35	0.8	1.3
10-14	73	36	37	1.0	1.0	69	34	35	0.9	1.0	53	28	25	0.7	0.9
15-19	117	63	54	1.6	0.9	164	90	74	2.2	0.8	124	67	57	1.6	0.9
20-24	363	166	197	5.0	1.2	469	237	232	6.3	1.0	449	226	223	5.8	1.0
25-29	436	211	225	6.0	1.1	489	240	249	6.6	1.0	418	188	230	5.4	1.2
30-34	393	170	223	5.4	1.3	450	208	242	6.1	1.2	342	145	197	4.5	1.4
35-39	425	167	258	5.9	1.5	351	157	194	4.7	1.2	408	173	235	5.3	1.4
40-44	481	194	287	6.6	1.5	470	187	283	6.3	1.5	489	209	280	6.4	1.3
45-49	569	225	344	7.8	1.5	481	204	277	6.5	1.4	536	220	316	7.0	1.4
50-54	542	239	303	7.5	1.3	538	216	322	7.3	1.5	615	254	361	8.0	1.4
55-59	508	214	294	7.0	1.4	483	203	280	6.5	1.4	530	234	296	6.9	1.3
60-64	510	241	269	7.0	1.1	518	256	262	7.0	1.0	504	265	239	6.6	0.9
65-69	680	341	339	9.4	1.0	636	380	256	8.6	0.7	643	365	278	8.4	0.8
70+	1,600	853	747	22.1	0.9	1,768	906	862	23.8	1.0	2,100	1,125	975	27.3	0.9

Ratio of F/M: Ratio of female patients to male patients  
 %: proportion

旧表 新登録結核患者数, および潜在性結核感染症治療対象者数、登録月別、2019年  
 Previous table Newly notified tuberculosis cases by registered month, 2019

登録月 Registered month	活動性結核 Active tuberculosis								(別掲) 潜在性結 核感染症 LTBI* on treatment	
	総数 All active tuberculosis	肺結核活動性 Active pulmonary tuberculosis						菌陰性・ その他 Bacillary negative or bacillary results unknown		肺外結核 活動性 Extra- pulmonary
		喀痰塗抹陽性 Sputum smear positive			その他結 核菌陽性 Other bacillary positive					
		総数 All sputum smear positive	初回治療 New	再治療 Retreatment						
総数 Total	14,460	11,094	5,231	4,966	265	4,382	1,481	3,366	7,684	
1月 Jan.	1,107	888	439	420	19	329	120	219	485	
2月 Feb.	1,150	905	404	379	25	364	137	245	589	
3月 Mar.	1,208	912	442	410	32	347	123	296	680	
4月 Apr.	1,303	982	463	440	23	383	136	321	702	
5月 May	1,175	889	415	389	26	358	116	286	697	
6月 Jun.	1,208	926	435	423	12	361	130	282	677	
7月 Jul.	1,386	1,067	482	464	18	453	132	319	707	
8月 Aug.	1,292	982	483	459	24	385	114	310	696	
9月 Sep.	1,143	877	408	383	25	337	132	266	619	
10月 Oct.	1,156	897	431	416	15	366	100	259	629	
11月 Nov.	1,175	892	423	405	18	349	120	283	580	
12月 Dec.	1,157	877	406	378	28	350	121	280	623	

\* LTBI: Latent Tuberculosis Infection. These are not included in the number of active tuberculosis.

表 3.1 新登録結核患者数, 結核病類別, 性・年齢階層別, 1998～2019年  
 Table 3.1 Newly notified tuberculosis patients by affected organ, sex and age group, in Japan, from 1998 to 2019

性・年齢 2019年 Sex Age-group in 2019	全結核 Tuberculosis notifications, all forms	肺結核 Pulmonary tuberculosis		肺外結核 Extra-pulmonary tuberculosis																	
		肺 Lungs	気管支 Bronchi	咽頭・ 喉頭 Pharynx / Larynx	粟粒 Miliary	胸膜炎 Pleurais	膿胸 Empyema	肺門・縦隔 リンパ節 Hilar・ Mediastinal lymph node	他の リンパ節 Other lymph nodes	髄膜炎 Menin- ges	腸 Intes- tines	脊椎 Verte- brae	他の 骨関節 Other joints / bones	腎・尿路 Kidneys / Urinary tracts	性器 Genitals	皮膚 Skins	眼 Eyes	耳 Ears	腹膜炎 Perito- neum	心膜炎 Pericar- dium	他の 臓器 Other organs
総数 Total	14,460	11,584 (80.1)	76 (0.5)	24 (0.2)	639 (4.4)	2,671 (18.5)	28 (0.2)	111 (0.8)	669 (4.6)	137 (0.9)	227 (1.6)	135 (0.9)	73 (0.5)	51 (0.4)	18 (0.1)	63 (0.4)	25 (0.2)	12 (0.1)	152 (1.1)	50 (0.3)	125 (0.9)
男 Male	8,521	7,005 (82.2)	30 (0.4)	5 (0.1)	244 (2.9)	1,755 (20.6)	17 (0.2)	56 (0.7)	204 (2.4)	88 (1.0)	106 (1.2)	57 (0.7)	30 (0.4)	34 (0.4)	11 (0.1)	16 (0.2)	17 (0.2)	3 (0.0)	71 (0.8)	37 (0.4)	70 (0.8)
女 Female	5,939	4,579 (77.1)	46 (0.8)	19 (0.3)	395 (6.7)	916 (15.4)	11 (0.2)	55 (0.9)	465 (7.8)	49 (0.8)	121 (2.0)	78 (1.3)	43 (0.7)	17 (0.3)	7 (0.1)	47 (0.8)	8 (0.1)	9 (0.2)	81 (1.4)	13 (0.2)	55 (0.9)
0-14	38	27 (71.1)	1 (2.6)	0 (0.0)	3 (7.9)	2 (5.3)	0 (0.0)	6 (15.8)	4 (10.5)	0 (0.0)	0 (0.0)	0 (0.0)	0 (0.0)	0 (0.0)	0 (0.0)	0 (0.0)	0 (0.0)	0 (0.0)	0 (0.0)	0 (0.0)	0 (0.0)
15-19	142	126 (88.7)	2 (1.4)	0 (0.0)	1 (0.7)	14 (9.9)	0 (0.0)	3 (2.1)	5 (3.5)	2 (1.4)	1 (0.7)	0 (0.0)	0 (0.0)	0 (0.0)	0 (0.0)	0 (0.0)	0 (0.0)	0 (0.0)	1 (0.7)	0 (0.0)	0 (0.0)
20-29	1,164	983 (84.5)	6 (0.5)	3 (0.3)	15 (1.3)	101 (8.7)	1 (0.1)	22 (1.9)	106 (9.1)	5 (0.4)	18 (1.5)	7 (0.6)	3 (0.3)	2 (0.2)	1 (0.1)	4 (0.3)	3 (0.3)	0 (0.0)	10 (0.9)	2 (0.2)	12 (1.0)
30-39	767	625 (81.5)	6 (0.8)	3 (0.4)	12 (1.6)	86 (11.2)	4 (0.5)	13 (1.7)	67 (8.7)	9 (1.2)	18 (2.3)	7 (0.9)	4 (0.5)	3 (0.4)	2 (0.3)	2 (0.3)	5 (0.7)	3 (0.4)	8 (1.0)	1 (0.1)	7 (0.9)
40-49	985	804 (81.6)	12 (1.2)	4 (0.4)	17 (1.7)	125 (12.7)	1 (0.1)	11 (1.1)	65 (6.6)	10 (1.0)	24 (2.4)	10 (1.0)	4 (0.4)	8 (0.8)	2 (0.2)	6 (0.6)	6 (0.6)	2 (0.2)	9 (0.9)	0 (0.0)	7 (0.7)
50-59	1,054	856 (81.2)	5 (0.5)	2 (0.2)	21 (2.0)	131 (12.4)	0 (0.0)	9 (0.9)	56 (5.3)	20 (1.9)	27 (2.6)	10 (0.9)	3 (0.3)	5 (0.5)	2 (0.2)	6 (0.6)	3 (0.3)	0 (0.0)	12 (1.1)	2 (0.2)	12 (1.1)
60-69	1,472	1,198 (81.4)	3 (0.2)	2 (0.1)	35 (2.4)	202 (13.7)	5 (0.3)	14 (1.0)	77 (5.2)	27 (1.8)	30 (2.0)	11 (0.7)	12 (0.8)	13 (0.9)	6 (0.4)	6 (0.4)	2 (0.1)	0 (0.0)	14 (1.0)	3 (0.2)	12 (0.8)
70-79	2,810	2,178 (77.5)	18 (0.6)	4 (0.1)	118 (4.2)	519 (18.5)	5 (0.2)	20 (0.7)	149 (5.3)	34 (1.2)	56 (2.0)	33 (1.2)	15 (0.5)	13 (0.5)	2 (0.1)	13 (0.5)	5 (0.2)	6 (0.2)	49 (1.7)	19 (0.7)	35 (1.2)
80-89	4,061	3,152 (77.6)	18 (0.4)	4 (0.1)	286 (7.0)	992 (24.4)	11 (0.3)	13 (0.3)	108 (2.7)	22 (0.5)	44 (1.1)	46 (1.1)	25 (0.6)	6 (0.1)	2 (0.0)	19 (0.5)	0 (0.0)	0 (0.0)	36 (0.9)	22 (0.5)	31 (0.8)
90+	1,967	1,635 (83.1)	5 (0.3)	2 (0.1)	131 (6.7)	499 (25.4)	1 (0.1)	0 (0.0)	32 (1.6)	8 (0.4)	9 (0.5)	11 (0.6)	7 (0.4)	1 (0.1)	1 (0.1)	7 (0.4)	1 (0.1)	1 (0.1)	13 (0.7)	1 (0.1)	9 (0.5)
年 Year	総数 Total																				
1998	41,033	33,981 (82.8)	-	-	505 (1.2)	5,125 (12.5)	251 (0.6)	136 (0.3)	1,469 (3.6)	154 (0.4)	335 (0.8)	385 (0.9)	328 (0.8)	227 (0.6)	78 (0.2)	100 (0.2)	12 (0.0)	25 (0.1)	-	-	692 (1.7)
1999	43,818	36,190 (82.6)	-	-	603 (1.4)	5,586 (12.7)	221 (0.5)	143 (0.3)	1,538 (3.5)	163 (0.4)	345 (0.8)	334 (0.8)	300 (0.7)	179 (0.4)	96 (0.2)	94 (0.2)	13 (0.0)	28 (0.1)	-	-	684 (1.6)
2000	39,384	32,338 (82.1)	-	-	597 (1.5)	5,108 (13.0)	202 (0.5)	123 (0.3)	1,432 (3.6)	158 (0.4)	356 (0.9)	319 (0.8)	272 (0.7)	181 (0.5)	72 (0.2)	123 (0.3)	16 (0.0)	38 (0.1)	-	-	656 (1.7)
2001	35,489	28,868 (81.3)	-	-	642 (1.8)	4,840 (13.6)	162 (0.5)	102 (0.3)	1,368 (3.9)	177 (0.5)	275 (0.8)	276 (0.8)	274 (0.8)	172 (0.5)	72 (0.2)	104 (0.3)	11 (0.0)	25 (0.1)	-	-	619 (1.7)
2002	32,828	26,472 (80.6)	-	-	626 (1.9)	4,666 (14.2)	152 (0.5)	84 (0.3)	1,269 (3.9)	188 (0.6)	323 (1.0)	299 (0.9)	222 (0.7)	148 (0.5)	66 (0.2)	100 (0.3)	19 (0.1)	29 (0.1)	-	-	544 (1.7)
2003	31,638	25,478 (80.5)	-	-	639 (2.0)	4,539 (14.3)	142 (0.4)	83 (0.3)	1,341 (4.2)	149 (0.5)	276 (0.9)	268 (0.8)	223 (0.7)	144 (0.5)	47 (0.1)	87 (0.3)	15 (0.0)	28 (0.1)	-	-	570 (1.8)
2004	29,736	23,829 (80.1)	-	-	617 (2.1)	4,491 (15.1)	125 (0.4)	70 (0.2)	1,293 (4.3)	160 (0.5)	299 (1.0)	275 (0.9)	220 (0.7)	112 (0.4)	53 (0.2)	95 (0.3)	13 (0.0)	30 (0.1)	-	-	564 (1.9)
2005	28,319	22,655 (80.0)	-	-	585 (2.1)	4,338 (15.3)	115 (0.4)	88 (0.3)	1,151 (4.1)	180 (0.6)	296 (1.0)	233 (0.8)	201 (0.7)	130 (0.5)	37 (0.1)	98 (0.3)	11 (0.0)	33 (0.1)	-	-	536 (1.9)
2006	26,384	20,856 (79.0)	-	-	616 (2.3)	4,192 (15.9)	97 (0.4)	79 (0.3)	1,191 (4.5)	127 (0.5)	263 (1.0)	248 (0.9)	231 (0.9)	112 (0.4)	40 (0.2)	109 (0.4)	9 (0.0)	24 (0.1)	-	-	554 (2.1)
2007	25,311	20,264 (80.1)	108 (0.4)	31 (0.1)	602 (2.4)	4,134 (16.3)	75 (0.3)	57 (0.2)	1,186 (4.7)	153 (0.6)	328 (1.3)	232 (0.9)	190 (0.8)	108 (0.4)	34 (0.1)	92 (0.4)	19 (0.1)	18 (0.1)	92 (0.4)	61 (0.2)	281 (1.1)
2008	24,760	19,780 (79.9)	117 (0.5)	43 (0.2)	570 (2.3)	4,001 (16.2)	78 (0.3)	68 (0.3)	1,194 (4.8)	171 (0.7)	292 (1.2)	273 (1.1)	170 (0.7)	121 (0.5)	34 (0.1)	92 (0.4)	13 (0.1)	29 (0.1)	144 (0.6)	80 (0.3)	181 (0.7)
2009	24,170	19,278 (79.8)	121 (0.5)	36 (0.1)	604 (2.5)	3,940 (16.3)	63 (0.3)	73 (0.3)	1,221 (5.1)	162 (0.7)	321 (1.3)	241 (1.0)	182 (0.8)	100 (0.4)	23 (0.1)	121 (0.5)	26 (0.1)	22 (0.1)	168 (0.7)	88 (0.4)	179 (0.7)
2010	23,261	18,735 (80.5)	127 (0.5)	53 (0.2)	598 (2.6)	3,959 (17.0)	48 (0.2)	74 (0.3)	1,158 (5.0)	138 (0.6)	330 (1.4)	239 (1.0)	159 (0.7)	88 (0.4)	35 (0.2)	97 (0.4)	29 (0.1)	12 (0.1)	154 (0.7)	76 (0.3)	171 (0.7)
2011	22,681	17,969 (79.2)	129 (0.6)	57 (0.3)	695 (3.1)	3,929 (17.3)	52 (0.2)	70 (0.3)	1,199 (5.3)	156 (0.7)	317 (1.4)	250 (1.1)	145 (0.6)	83 (0.4)	22 (0.1)	89 (0.4)	27 (0.1)	21 (0.1)	173 (0.8)	89 (0.4)	187 (0.8)
2012	21,283	16,826 (79.1)	107 (0.5)	46 (0.2)	608 (2.9)	3,653 (17.2)	63 (0.3)	134 (0.6)	1,038 (4.9)	152 (0.7)	348 (1.6)	255 (1.2)	157 (0.7)	82 (0.4)	20 (0.1)	97 (0.5)	34 (0.2)	16 (0.1)	176 (0.8)	80 (0.4)	166 (0.8)
2014	19,615	15,586 (79.5)	100 (0.5)	37 (0.2)	642 (3.3)	3,421 (17.4)	41 (0.2)	137 (0.7)	978 (5.0)	184 (0.9)	281 (1.4)	212 (1.1)	132 (0.7)	68 (0.3)	15 (0.1)	101 (0.5)	30 (0.2)	15 (0.1)	207 (1.1)	67 (0.3)	153 (0.8)
2015	18,280	14,581 (79.8)	119 (0.7)	43 (0.2)	631 (3.5)	3,277 (17.9)	46 (0.3)	128 (0.7)	813 (4.4)	166 (0.9)	248 (1.4)	192 (1.1)	98 (0.5)	73 (0.4)	21 (0.1)	87 (0.5)	20 (0.1)	19 (0.1)	176 (1.0)	69 (0.4)	134 (0.7)
2016	17,625	14,014 (79.5)	119 (0.7)	44 (0.2)	633 (3.6)	3,141 (17.8)	30 (0.2)	121 (0.7)	835 (4.7)	164 (0.9)	264 (1.5)	194 (1.1)	101 (0.6)	83 (0.5)	19 (0.1)	80 (0.5)	25 (0.1)	15 (0.1)	184 (1.0)	81 (0.5)	149 (0.8)
2017	16,789	13,469 (80.2)	97 (0.6)	30 (0.2)	687 (4.1)	2,868 (17.1)	31 (0.2)	140 (0.8)	779 (4.6)	164 (1.0)	220 (1.3)	150 (0.9)	91 (0.5)	53 (0.3)	19 (0.1)	80 (0.5)	19 (0.1)	18 (0.1)	178 (1.1)	73 (0.4)	161 (1.0)
2018	15,590	12,505 (80.2)	84 (0.5)	31 (0.2)	616 (4.0)	2,640 (16.9)	27 (0.2)	107 (0.7)	761 (4.9)	150 (1.0)	228 (1.5)	155 (1.0)	97 (0.6)	67 (0.4)	16 (0.1)	79 (0.5)	21 (0.1)	10 (0.1)	148 (0.9)	65 (0.4)	129 (0.8)
2019	14,460	11,584 (80.1)	76 (0.5)	24 (0.2)	639 (4.4)	2,671 (18.5)	28 (0.2)	111 (0.8)	669 (4.6)	137 (0.9)	227 (1.6)	135 (0.9)	73 (0.5)	51 (0.4)	18 (0.1)	63 (0.4)	25 (0.2)	12 (0.1)	152 (1.1)	50 (0.3)	125 (0.9)

注1: 結核病類は重複あり。 Note 1: Cases having multiple organs are counted independently.  
 注2: 括弧内は各性・年齢階層、登録年の新登録患者数に対する割合(%)。 Note 2: Numbers in brackets indicate the proportion out of the total number of newly notified tuberculosis cases (all forms) for each sex and age group.

表 3.2 粟粒結核患者数・割合、性・年齢階層別、2004～2019年

Table 3.2 Number and proportio of miliary tuberculosis by age group and sex, 2004-2019

年 year	年齢総数 Age group total		0～9歳 0-9 yrs	10～19歳 10-19 yrs	20～29歳 20-29 yrs	30～39歳 30-39 yrs	40～49歳 40-49 yrs	50～59歳 50-59 yrs	60～69歳 60-69 yrs	70～79歳 70-79 yrs	80歳以上 80 yrs+	
	数	割合(%)	数	割合(%)	数	割合(%)	数	割合(%)	数	割合(%)	数	割合(%)
	n	%	n	%	n	%	n	%	n	%	n	%
男女計 Total	2004	617 (2.1)	0 (0.0)	6 (1.8)	19 (0.8)	22 (0.8)	24 (1.0)	44 (1.1)	82 (1.8)	199 (2.9)	221 (3.6)	
	2005	585 (2.1)	1 (1.3)	3 (0.9)	13 (0.6)	38 (1.4)	25 (1.1)	41 (1.1)	77 (1.8)	180 (2.8)	207 (3.2)	
	2006	616 (2.3)	1 (1.9)	1 (0.4)	19 (0.9)	24 (1.0)	27 (1.3)	42 (1.3)	84 (2.2)	173 (2.8)	245 (3.9)	
	2007	602 (2.4)	0 (0.0)	2 (0.9)	10 (0.5)	20 (0.9)	23 (1.2)	26 (0.9)	75 (2.0)	190 (3.4)	256 (4.0)	
	2008	570 (2.3)	1 (1.4)	1 (0.5)	17 (0.9)	18 (0.8)	21 (1.1)	40 (1.4)	64 (1.7)	162 (2.9)	246 (3.7)	
	2009	604 (2.5)	3 (6.4)	2 (0.9)	6 (0.4)	26 (1.2)	25 (1.4)	38 (1.5)	68 (1.9)	164 (3.2)	272 (3.9)	
	2010	598 (2.6)	0 (0.0)	2 (0.7)	11 (0.7)	20 (1.0)	22 (1.2)	23 (1.1)	80 (2.2)	139 (2.8)	301 (4.4)	
	2011	695 (3.1)	1 (1.9)	2 (1.1)	18 (1.3)	21 (1.2)	28 (1.5)	27 (1.3)	58 (1.8)	155 (3.2)	385 (5.3)	
	2012	608 (2.9)	0 (0.0)	2 (1.1)	4 (0.3)	10 (0.7)	20 (1.3)	28 (1.6)	53 (1.8)	147 (3.2)	344 (4.8)	
	2013	635 (3.1)	0 (0.0)	4 (2.1)	9 (0.8)	21 (1.6)	15 (1.0)	23 (1.4)	59 (2.1)	151 (3.5)	353 (4.8)	
	2014	642 (3.3)	1 (3.1)	2 (1.1)	7 (0.6)	15 (1.2)	12 (0.8)	23 (1.5)	53 (2.0)	133 (3.3)	396 (5.4)	
	2015	631 (3.5)	0 (0.0)	2 (1.1)	11 (1.0)	8 (0.7)	24 (1.8)	17 (1.3)	36 (1.5)	153 (4.1)	380 (5.4)	
	2016	633 (3.6)	1 (2.7)	0 (0.0)	8 (0.6)	16 (1.6)	12 (1.0)	26 (2.0)	50 (2.3)	135 (4.0)	385 (5.5)	
	2017	687 (4.1)	3 (7.3)	3 (1.8)	8 (0.6)	18 (1.8)	11 (0.9)	24 (1.9)	45 (2.2)	123 (3.9)	452 (6.7)	
	2018	616 (4.0)	1 (3.3)	2 (1.1)	13 (1.0)	11 (1.2)	16 (1.5)	23 (2.0)	41 (2.4)	120 (4.0)	389 (6.1)	
	2019	639 (4.4)	2 (7.4)	2 (1.3)	15 (1.3)	12 (1.6)	17 (1.7)	21 (2.0)	35 (2.4)	118 (4.2)	417 (6.9)	
男 Males	2004	282 (1.5)	0 (0.0)	2 (1.3)	10 (0.8)	15 (0.9)	21 (1.3)	32 (1.1)	49 (1.5)	78 (1.7)	75 (2.1)	
	2005	269 (1.5)	1 (2.2)	2 (1.2)	7 (0.6)	24 (1.5)	15 (1.0)	23 (0.8)	47 (1.5)	83 (2.0)	67 (1.8)	
	2006	309 (1.8)	0 (0.0)	1 (0.9)	12 (1.1)	17 (1.3)	23 (1.6)	34 (1.3)	55 (2.0)	78 (1.9)	89 (2.4)	
	2007	250 (1.5)	0 (0.0)	2 (1.8)	6 (0.6)	13 (1.0)	14 (1.1)	16 (0.7)	45 (1.7)	76 (2.0)	78 (2.0)	
	2008	241 (1.5)	0 (0.0)	1 (0.9)	13 (1.4)	12 (1.0)	17 (1.4)	26 (1.3)	39 (1.5)	65 (1.8)	68 (1.8)	
	2009	211 (1.4)	0 (0.0)	1 (1.0)	2 (0.2)	18 (1.6)	18 (1.5)	21 (1.2)	26 (1.0)	57 (1.7)	68 (1.7)	
	2010	232 (1.6)	0 (0.0)	2 (1.3)	7 (0.8)	11 (1.1)	19 (1.6)	14 (0.9)	40 (1.5)	54 (1.7)	85 (2.1)	
	2011	283 (2.0)	1 (4.2)	0 (0.0)	12 (1.6)	14 (1.6)	17 (1.5)	18 (1.2)	34 (1.5)	66 (2.1)	121 (2.9)	
	2012	243 (1.9)	0 (0.0)	1 (1.0)	4 (0.6)	7 (0.8)	17 (1.7)	22 (1.7)	33 (1.6)	46 (1.6)	113 (2.8)	
	2013	234 (1.9)	0 (0.0)	2 (2.0)	2 (0.3)	14 (2.0)	7 (0.8)	12 (1.0)	34 (1.7)	52 (1.8)	111 (2.7)	
	2014	249 (2.1)	0 (0.0)	1 (1.1)	3 (0.5)	7 (1.0)	7 (0.8)	9 (0.9)	41 (2.2)	66 (2.5)	115 (2.8)	
	2015	231 (2.1)	0 (0.0)	1 (1.1)	6 (1.0)	7 (1.2)	19 (2.3)	11 (1.2)	20 (1.2)	65 (2.6)	102 (2.7)	
	2016	246 (2.3)	1 (4.8)	0 (0.0)	5 (0.7)	11 (2.0)	7 (0.9)	14 (1.6)	26 (1.6)	60 (2.7)	122 (3.2)	
	2017	264 (2.6)	1 (3.8)	2 (1.9)	3 (0.4)	11 (2.1)	5 (0.7)	17 (1.9)	27 (1.9)	60 (2.8)	138 (3.7)	
	2018	258 (2.8)	0 (0.0)	2 (2.0)	9 (1.2)	9 (1.9)	11 (2.7)	18 (2.3)	26 (2.2)	56 (2.9)	127 (3.7)	
	2019	244 (2.9)	1 (8.3)	1 (1.2)	12 (1.7)	6 (1.4)	14 (2.4)	15 (2.1)	16 (1.6)	62 (3.3)	117 (3.7)	
女 Females	2004	335 (3.2)	0 (0.0)	4 (2.2)	9 (0.7)	7 (0.6)	3 (0.4)	12 (1.2)	33 (2.4)	121 (5.3)	146 (5.5)	
	2005	316 (3.1)	0 (0.0)	1 (0.6)	6 (0.5)	14 (1.3)	10 (1.5)	18 (2.0)	30 (2.5)	97 (4.5)	140 (5.3)	
	2006	307 (3.3)	1 (4.0)	0 (0.0)	7 (0.7)	7 (0.7)	4 (0.6)	8 (1.0)	29 (2.8)	95 (4.6)	156 (6.1)	
	2007	352 (3.9)	0 (0.0)	0 (0.0)	4 (0.4)	7 (0.7)	9 (1.4)	10 (1.4)	30 (2.9)	114 (5.9)	178 (6.7)	
	2008	329 (3.6)	1 (3.3)	0 (0.0)	4 (0.4)	6 (0.6)	4 (0.6)	14 (2.0)	25 (2.4)	97 (5.2)	178 (6.4)	
	2009	393 (4.3)	3 (10.7)	1 (0.8)	4 (0.5)	8 (0.8)	7 (1.0)	17 (2.3)	42 (4.2)	107 (5.9)	204 (6.7)	
	2010	366 (4.2)	0 (0.0)	0 (0.0)	4 (0.6)	9 (1.0)	3 (0.5)	9 (1.5)	40 (4.0)	85 (4.9)	216 (7.3)	
	2011	412 (4.7)	0 (0.0)	2 (2.0)	6 (0.9)	7 (0.8)	11 (1.7)	9 (1.5)	24 (2.5)	89 (5.2)	264 (8.5)	
	2012	365 (4.4)	0 (0.0)	1 (1.2)	0 (0.0)	3 (0.4)	3 (0.5)	6 (1.2)	20 (2.3)	101 (6.1)	231 (7.1)	
	2013	401 (5.0)	0 (0.0)	2 (2.2)	7 (1.2)	7 (1.2)	8 (1.4)	11 (2.1)	25 (3.0)	99 (6.4)	242 (7.4)	
	2014	393 (5.2)	1 (6.3)	1 (1.1)	4 (0.7)	8 (1.4)	5 (0.9)	14 (2.8)	12 (1.6)	67 (4.9)	281 (8.7)	
	2015	400 (5.6)	0 (0.0)	1 (1.2)	5 (1.0)	1 (0.2)	5 (1.0)	6 (1.4)	16 (2.5)	88 (6.8)	278 (8.8)	
	2016	387 (5.5)	0 (0.0)	0 (0.0)	3 (0.6)	5 (1.1)	5 (1.0)	12 (2.9)	24 (3.8)	75 (6.4)	263 (8.1)	
	2017	423 (6.4)	2 (13.3)	1 (1.6)	5 (0.9)	7 (1.5)	6 (1.3)	7 (1.8)	18 (3.1)	63 (5.9)	314 (10.4)	
	2018	358 (5.7)	1 (10.0)	0 (0.0)	4 (0.7)	2 (0.5)	5 (1.3)	5 (1.3)	15 (3.0)	64 (6.0)	262 (8.9)	
	2019	395 (6.7)	1 (6.7)	1 (1.5)	3 (0.6)	6 (1.7)	3 (0.7)	6 (1.7)	19 (4.1)	56 (6.1)	300 (10.4)	

注1: 他結核病類との重複あり。 Note1: Cases having multiple organs are counted independently.

注2: 割合は各年齢階層新登録患者数に対する割合。 Note2: % indicate proportion out of the total number of newly notified tuberculosis cases for each age group.

【外国生れ】

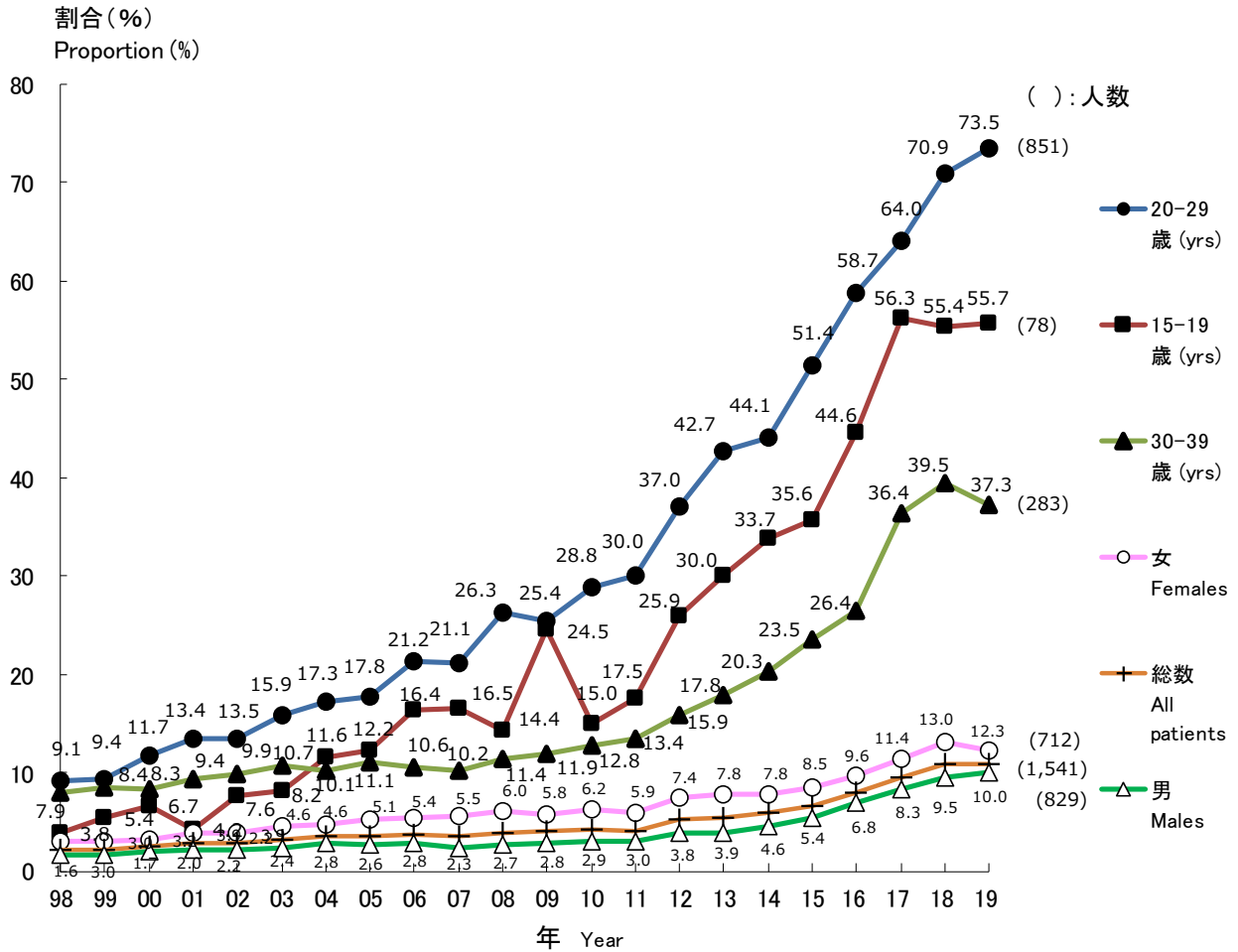


図 3 新登録結核患者に占める外国生まれ結核患者割合の推移, 性別・特定年齢階層別, 1998~2019年  
 Fig. 3 Annual trend of proportion of foreign-born among newly notified tuberculosis patients, by sex and age group, from 1998 to 2019

割合: 国籍または出生国不明を除く。

Those whose country of birth is unknown are excluded from the numerator.

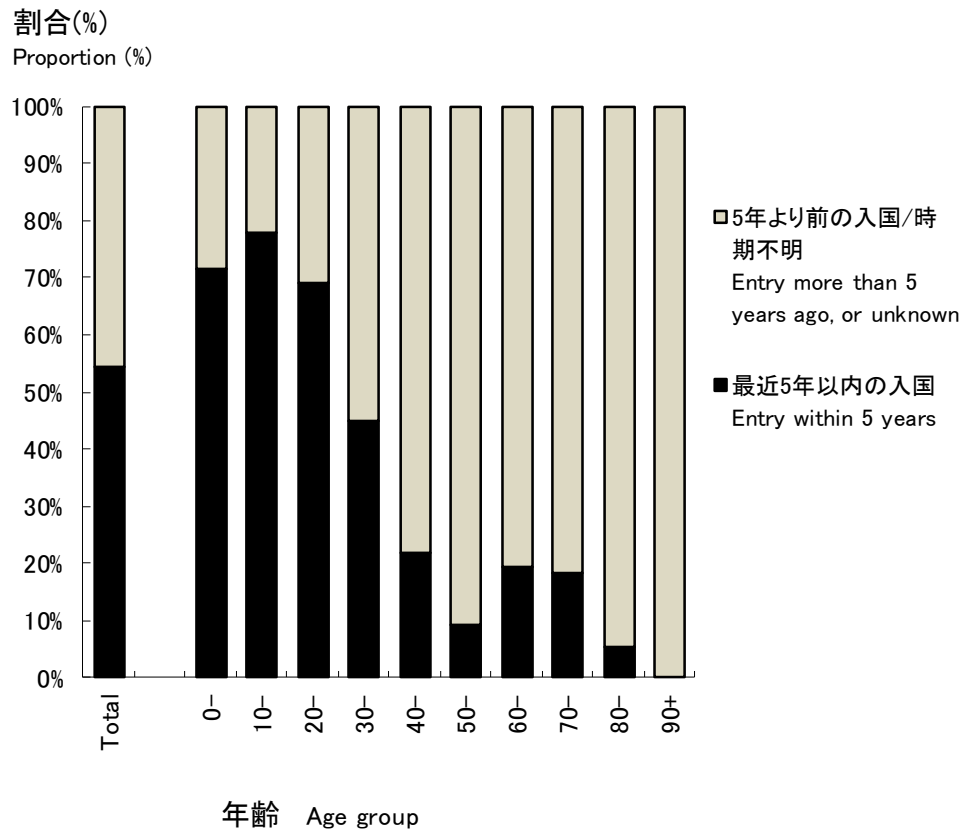


図4 外国生まれ結核患者の入国時期別割合、年齢階層別、2019年  
Fig. 4 Proportion of foreign-born tuberculosis patients, by age group and time of entry to Japan, in 2019

表 4.1 新登録全結核患者の発生動向年次推移, 国籍または出生国別, 性別, 1998~2019年  
 Table 4.1 Annual trend of newly notified tuberculosis patients by nationality or country of birth, and by sex, from 1998 to 2019

暦年 Year	新登録全結核 患者数 Number of newly notified tuberculosis patients, all forms	日本生まれ Born in Japan	外国籍もしくは 外国生まれ Foreign nationalities or Foreign borns (*1)	国籍または 出生国不明 Nationalities or country of birth unknown	外国生まれ 割合 (%) Proportion of foreign borns (%)(*2)	性 Sex (*3)		女-男比 Ratio of Females to Males
						男 Males	女 Females	
1998	41,033	34,382	739	5,912	2.1	365	374	1.0
1999	43,818	37,094	821	5,903	2.2	415	406	1.0
2000	39,384	33,720	837	4,827	2.4	436	401	0.9
2001	35,489	30,305	866	4,318	2.8	442	424	1.0
2002	32,828	28,667	824	3,337	2.8	411	413	1.0
2003	31,638	27,665	906	3,067	3.2	433	473	1.1
2004	29,736	26,205	931	2,600	3.4	479	452	0.9
2005	28,319	25,247	923	2,149	3.5	438	485	1.1
2006	26,384	23,505	920	1,959	3.8	444	476	1.1
2007	25,311	23,451	842	1,018	3.5	364	478	1.3
2008	24,760	23,163	945	652	3.9	416	529	1.3
2009	24,170	22,808	938	424	4.0	414	524	1.3
2010	23,261	21,976	952	333	4.2	424	528	1.2
2011	22,681	21,372	921	388	4.1	416	505	1.2
2012	21,283	19,555	1,069	659	5.2	474	595	1.3
2013	20,495	18,589	1,064	842	5.4	468	596	1.3
2014	19,615	17,727	1,101	787	5.8	531	570	1.1
2015	18,280	16,396	1,164	720	6.6	581	583	1.0
2016	17,625	15,504	1,338	783	7.9	693	645	0.9
2017	16,789	14,533	1,530	726	9.5	804	726	0.9
2018	15,590	13,570	1,667	353	10.9	860	807	0.9
2019	14,460	12,567	1,541	352	10.9	829	712	0.9

\*1: 2011年までは外国籍結核患者数、2012年以降外国生まれ結核患者数。  
 Number of tuberculosis patients with foreign nationalities until 2011, number of foreign-born patients afterwards.

\*2: 2011年までは外国籍患者割合、2012年以降外国生まれ患者割合(国籍または出生国不明を除く)。  
 Proportion of Tuberculosis patients with foreign nationalities until 2011, proportion of foreign-born patients afterwards, excluding those of unknown nationality or country of birth.

\*3: 外国籍または外国生まれにおける性別。  
 Sex distribution among foreign nationalities or foreign-borns.



表 4.2 新登録外国人結核患者数・割合、年齢階層別、1998～2019年  
Table 4.2 Annual trend of foreign-borns by age group, 1998–2019

年 year	年齢 Age group	0～9歳 0-9 yrs	10～19歳 10-19 yrs	20～29歳 20-29 yrs	30～39歳 30-39 yrs	40～49歳 40-49 yrs	50～59歳 50-59 yrs	60～69歳 60-69 yrs	70～79歳 70-79 yrs	80歳以上 80 yrs+
	総数 Total	数n 割合(%)	数n 割合(%)	数n 割合(%)	数n 割合(%)	数n 割合(%)	数n 割合(%)	数n 割合(%)	数n 割合(%)	数n 割合(%)
1998	739	6 (0.8)	20 (2.7)	300 (40.6)	215 (29.1)	83 (11.2)	44 (6.0)	23 (3.1)	29 (3.9)	19 (2.6)
1999	821	11 (1.3)	27 (3.3)	319 (38.9)	241 (29.4)	89 (10.8)	54 (6.6)	27 (3.3)	35 (4.3)	18 (2.2)
2000	837	14 (1.7)	26 (3.1)	357 (42.7)	235 (28.1)	92 (11.0)	49 (5.9)	23 (2.7)	27 (3.2)	14 (1.7)
2001	866	4 (0.5)	17 (2.0)	361 (41.7)	249 (28.8)	110 (12.7)	55 (6.4)	27 (3.1)	25 (2.9)	18 (2.1)
2002	824	5 (0.6)	24 (2.9)	345 (41.9)	249 (30.2)	81 (9.8)	47 (5.7)	26 (3.2)	24 (2.9)	23 (2.8)
2003	906	9 (1.0)	25 (2.8)	399 (44.0)	268 (29.6)	98 (10.8)	38 (4.2)	22 (2.4)	27 (3.0)	20 (2.2)
2004	931	4 (0.4)	32 (3.4)	402 (43.2)	250 (26.9)	107 (11.5)	59 (6.3)	28 (3.0)	27 (2.9)	22 (2.4)
2005	923	5 (0.5)	37 (4.0)	378 (41.0)	273 (29.6)	105 (11.4)	62 (6.7)	26 (2.8)	16 (1.7)	21 (2.3)
2006	920	5 (0.5)	34 (3.7)	409 (44.5)	234 (25.4)	113 (12.3)	59 (6.4)	35 (3.8)	11 (1.2)	20 (2.2)
2007	842	6 (0.7)	35 (4.2)	390 (46.3)	224 (26.6)	102 (12.1)	43 (5.1)	15 (1.8)	12 (1.4)	15 (1.8)
2008	945	4 (0.4)	27 (2.9)	468 (49.5)	237 (25.1)	114 (12.1)	41 (4.3)	25 (2.6)	10 (1.1)	19 (2.0)
2009	938	2 (0.2)	50 (5.3)	427 (45.5)	243 (25.9)	103 (11.0)	41 (4.4)	30 (3.2)	20 (2.1)	22 (2.3)
2010	952	5 (0.5)	41 (4.3)	438 (46.0)	242 (25.4)	114 (12.0)	39 (4.1)	35 (3.7)	18 (1.9)	20 (2.1)
2011	921	5 (0.5)	30 (3.3)	419 (45.5)	226 (24.5)	126 (13.7)	53 (5.8)	20 (2.2)	19 (2.1)	23 (2.5)
2012	1,069	4 (0.4)	45 (4.2)	468 (43.8)	237 (22.2)	181 (16.9)	63 (5.9)	33 (3.1)	17 (1.6)	21 (2.0)
2013	1,064	3 (0.3)	52 (4.9)	494 (46.4)	225 (21.1)	147 (13.8)	65 (6.1)	30 (2.8)	25 (2.3)	23 (2.2)
2014	1,101	5 (0.5)	59 (5.4)	511 (46.4)	243 (22.1)	151 (13.7)	71 (6.4)	26 (2.4)	16 (1.5)	19 (1.7)
2015	1,164	3 (0.3)	63 (5.4)	565 (48.5)	252 (21.6)	134 (11.5)	74 (6.4)	27 (2.3)	19 (1.6)	27 (2.3)
2016	1,338	5 (0.4)	89 (6.7)	712 (53.2)	258 (19.3)	139 (10.4)	66 (4.9)	33 (2.5)	15 (1.1)	21 (1.6)
2017	1,530	5 (0.3)	87 (5.7)	774 (50.6)	349 (22.8)	143 (9.3)	89 (5.8)	48 (3.1)	17 (1.1)	18 (1.2)
2018	1,667	4 (0.2)	95 (5.7)	896 (53.7)	344 (20.6)	151 (9.1)	91 (5.5)	35 (2.1)	23 (1.4)	28 (1.7)
2019	1,541	7 (0.5)	81 (5.3)	851 (55.2)	283 (18.4)	147 (9.5)	76 (4.9)	41 (2.7)	27 (1.8)	28 (1.8)

注1:割合は新登録外国人結核患者総数に対する各年齢階層患者数の割合

Note1: % indicate proportion out of the total number of newly notified foreign-born tuberculosis cases for each age group.

注2: 2011年までは外国国籍患者数。2012年以降は外国生まれ患者数

Note2: "Foreign nationalities" until 2011, "Foreign-born" since 2012.

表 5 外国生まれ結核患者及び薬剤耐性結核の数および割合, 出生国別, 入国時期別 2019年  
Table 5 Number and proportion of foreign-born tuberculosis patients by country of birth and time of entry to Japan, 2019

総数 Total	薬剤耐性 Drug resistance					最近5年以内入国 Entry within 5 years		薬剤耐性 Drug resistance														
	n	(%)	多剤耐性 MDR	INH 耐性 INH resistance	Any RFP 耐性 Any RFP resistance	1 剤以上耐性 Any resistance*	n	(%)	多剤耐性 MDR	INH 耐性 Any INH resistance	RFP 耐性 RFP resistance	Any 1 剤以上耐性 Any resistance*										
総数 Total	1,541	(100.0)	21	(100.0)	86	(100.0)	23	(100.0)	126	(100.0)	総数 Total	836	(100.0)	15	(100.0)	44	(100.0)	17	(100.0)	68	(100.0)	
ベトナム Vietnam	331	(21.5)	6	(28.6)	24	(27.9)	6	(26.1)	36	(28.6)	ベトナム Vietnam	248	(29.7)	6	(40.0)	20	(45.5)	6	(35.3)	30	(44.1)	
フィリピン Philippines	308	(20.0)	1	(4.8)	14	(16.3)	1	(4.3)	18	(14.3)	中国 China	128	(15.3)	7	(46.7)	12	(27.3)	8	(47.1)	17	(25.0)	
中国 China	253	(16.4)	11	(52.4)	22	(25.6)	12	(52.2)	30	(23.8)	インドネシア Indonesia	112	(13.4)					1	(5.9)	2	(2.9)	
インドネシア Indonesia	160	(10.4)			4	(4.7)	1	(4.3)	8	(6.3)	フィリピン Philippines	107	(12.8)	1	(6.7)	3	(6.8)	1	(5.9)	3	(4.4)	
ネパール Nepal	146	(9.5)			1	(1.2)			3	(2.4)	ネパール Nepal	80	(9.6)							1	(1.5)	
ミャンマー Myanmar	53	(3.4)	1	(4.8)	4	(4.7)	1	(4.3)	7	(5.6)	ミャンマー Myanmar	36	(4.3)			2	(4.5)			3	(4.4)	
韓国 Republic of Korea	36	(2.3)			3	(3.5)			4	(3.2)	インド India	18	(2.2)			1	(2.3)			1	(1.5)	
インド India	32	(2.1)			1	(1.2)			1	(0.8)	カンボジア Cambodia	16	(1.9)							1	(1.5)	
タイ Thailand	26	(1.7)							1	(0.8)	モンゴル Mongolia	13	(1.6)			1	(2.3)			4	(5.9)	
カンボジア Cambodia	24	(1.6)							1	(0.8)	タイ Thailand	13	(1.6)									
ブラジル Brazil	23	(1.5)			1	(1.2)			1	(0.8)	ブータン Bhutan	10	(1.2)			1	(2.3)			1	(1.5)	
モンゴル Mongolia	16	(1.0)			1	(1.2)			4	(3.2)	その他 Others	48	(5.7)	1	(6.7)	4	(9.1)	1	(5.9)	5	(7.4)	
バングラデシュ Bangladesh	11	(0.7)			2	(2.3)			2	(1.6)	国名不明 Unknown	7	(0.8)									
ブータン Bhutan	10	(0.6)			1	(1.2)			1	(0.8)												
パキスタン Pakistan	10	(0.6)																				
その他 Others	61	(4.0)	2	(9.5)	5	(5.8)	2	(8.7)	6	(4.8)												
国名不明 Unknown	41	(2.7)			3	(3.5)			3	(2.4)												

国名: 10名以上患者発生届けのあった国名を掲載 Only those countries with more than ten tuberculosis cases are listed.

MDR: Multi-drug resistant, i.e., resistant to at least INH and RFP INH: isoniazid RFP: rifampicin

\*: INH, RFP, SM EBの4剤のうちのいずれかに耐性 resistant to either INH, RFP, SM, or EB

5年以上前入国/時期不明 Entry more than 5 years ago, or unknown	薬剤耐性 Drug resistance									
	n	(%)	多剤耐性 MDR	INH 耐性 Any INH resistance	RFP 耐性 Any RFP resistance	1 剤以上耐性 Any resistance*				
総数 Total	705	(100.0)	7	(100.0)	45	(100.0)	7	(100.0)	58	(100.0)
フィリピン Philippines	201	(28.5)			11	(24.4)			15	(25.9)
中国 China	125	(17.7)	4	(57.1)	11	(24.4)	4	(57.1)	13	(22.4)
ベトナム Vietnam	83	(11.8)			5	(11.1)			6	(10.3)
ネパール Nepal	66	(9.4)			1	(2.2)			2	(3.4)
インドネシア Indonesia	48	(6.8)			4	(8.9)			6	(10.3)
韓国 Republic of Korea	31	(4.4)			3	(6.7)			4	(6.9)
ブラジル Brazil	18	(2.6)			1	(2.2)			1	(1.7)
ミャンマー Myanmar	17	(2.4)	2	(28.6)	3	(6.7)	2	(28.6)	4	(6.9)
インド India	14	(2.0)								
タイ Thailand	13	(1.8)							1	(1.7)
その他 Others	55	(7.8)	1	(14.3)	3	(6.7)	1	(14.3)	3	(5.2)
国名不明 Unknown	34	(4.8)			3	(6.7)			3	(5.2)

表 6 職業分類別外国生まれ結核患者数、性別・年齢階層別、2019年  
 Table 6 Occupation of foreign-born tuberculosis patients by sex and age group, in Japan, in 2019

年齢 Age group	総数 Total	接客業 Service trade workers	医療職 Health care workers	教員・ 保育士 Teacher s / Nursery staff	乳幼児 ・児童 Infants / Children	生徒・ 学生 Student s	他常用 勤 労者 Other regular employe es	他臨時 雇 ・日雇 Other temporar y/day laborer	他自営・ 自由業 Other self- employe d	家事 従業者 Houseke epers	無職・ その他 Unemplo -yed / Others	不明 Unknow n
		(%)	(%)	(%)	(%)	(%)	(%)	(%)	(%)	(%)	(%)	(%)
総数 Total	1,541 (100)	63 (4)	26 (2)	1 (0)	9 (1)	395 (26)	569 (37)	94 (6)	14 (1)	38 (2)	290 (19)	42 (3)
男 Males	829 (100)	23 (3)	5 (1)	0 (0)	6 (1)	243 (29)	346 (42)	45 (5)	9 (1)	2 (0)	127 (15)	23 (3)
女 Females	712 (100)	40 (6)	21 (3)	1 (0)	3 (0)	152 (21)	223 (31)	49 (7)	5 (1)	36 (5)	163 (23)	19 (3)
0-14	10 (100)	0 -	0 -	0 -	8 (80)	0 -	0 -	0 -	0 -	0 -	2 (20)	0 -
15-19	78 (100)	2 (3)	0 -	0 -	1 (1)	57 (73)	5 (6)	2 (3)	0 -	0 -	9 (12)	2 (3)
20-24	476 (100)	10 (2)	9 (2)	0 -	0 -	208 (44)	160 (34)	20 (4)	0 -	5 (1)	56 (12)	8 (2)
25-29	375 (100)	9 (2)	4 (1)	1 (0)	0 -	105 (28)	177 (47)	18 (5)	0 -	3 (1)	47 (13)	11 (3)
30-34	174 (100)	11 (6)	1 (1)	0 -	0 -	18 (10)	83 (48)	18 (10)	2 (1)	6 (3)	31 (18)	4 (2)
35-39	109 (100)	12 (11)	1 (1)	0 -	0 -	5 (5)	45 (41)	16 (15)	1 (1)	9 (8)	16 (15)	4 (4)
40-44	77 (100)	9 (12)	5 (6)	0 -	0 -	2 (3)	31 (40)	7 (9)	0 -	7 (9)	13 (17)	3 (4)
45-49	70 (100)	4 (6)	1 (1)	0 -	0 -	0 -	34 (49)	3 (4)	4 (6)	4 (6)	19 (27)	1 (1)
50-54	47 (100)	4 (9)	2 (4)	0 -	0 -	0 -	12 (26)	5 (11)	2 (4)	2 (4)	15 (32)	5 (11)
55-59	29 (100)	2 (7)	2 (7)	0 -	0 -	0 -	10 (34)	2 (7)	1 (3)	0 -	12 (41)	0 -
60+	96 (100)	0 -	1 (1)	0 -	0 -	0 -	12 (13)	3 (3)	4 (4)	2 (2)	70 (73)	4 (4)

旧表 外国人新登録結核患者の発生動向, 暦年別, 年齢階層別, 1998~2019年  
 Previous table Trend of newly notified foreign nationals with TB by year and age group, 1998-2019

暦年 Year	外国人 All foreigners	年齢 Age group							20歳代割 合(%) Percentage of 20-29 yrs in total
		0-14	15-19	20-29	30-39	40-49	50-59	60+	
1998	739	11	15	300	215	83	44	71	40.6
1999	821	13	25	319	241	89	54	80	38.9
2000	837	16	24	357	235	92	49	64	42.7
2001	866	6	15	361	249	110	55	70	41.7
2002	824	6	23	345	249	81	47	73	41.9
2003	906	12	22	399	268	98	38	69	44.0
2004	931	6	30	402	250	107	59	77	43.2
2005	923	9	33	378	273	105	62	63	41.0
2006	920	6	33	409	234	113	59	66	44.5
2007	842	9	32	390	224	102	43	42	46.3
2008	945	5	26	468	237	114	41	54	49.5
2009	938	3	49	427	243	103	41	72	45.5
2010	952	9	37	438	242	114	39	73	46.0
2011	921	8	27	419	226	126	53	62	45.5
2012	1069	7	42	468	237	181	63	71	43.8
2013	1064	7	48	494	225	147	65	78	46.4
2014	1101	8	56	511	243	151	71	61	46.4
2015	1164	9	57	565	252	134	74	73	48.5
2016	1338	12	82	712	258	139	66	69	53.2
2017	1530	11	81	774	349	143	89	83	50.6
2018	1667	12	87	896	344	151	91	86	53.7
2019	1541	10	78	851	283	147	76	96	55.2

2011年までは外国籍結核患者数、2012年以降外国生まれ結核患者数

Number of tuberculosis patients with foreign nationalities until 2011, number of foreign-born patients afterwards.

旧表 都道府県・政令指定都市別外国人結核患者数, 2019年  
Previous table Distribution of foreign nationals with tuberculosis by prefecture and designated city, 2019

	新登録患者数 Newly notified patients	外国生まれ Foreign born	割合 Proportion (%)
全国 Japan	14,460	1,541	10.7
福岡市 Fukuoka city	205	67	32.7
岡山市 Okayama city	72	15	20.8
三重県 Mie	167	33	19.8
愛知県 Aichi	602	116	19.3
群馬県 Gunma	156	30	19.2
静岡県 Shizuoka	199	38	19.1
岐阜県 Gifu	290	51	17.6
岡山県 Okayama	114	19	16.7
栃木県 Tochigi	188	31	16.5
名古屋市 Nagoya city	422	65	15.4
浜松市 Hamamatsu city	86	13	15.1
石川県 Ishikawa	100	15	15.0
茨城県 Ibaraki	299	43	14.4
千葉県 Chiba	588	84	14.3
東京都 Tokyo	1810	256	14.1
静岡市 Shizuoka city	72	10	13.9
富山県 Toyama	101	14	13.9
仙台市 Sendai city	76	10	13.2
千葉市 Chiba city	109	14	12.8
長野県 Nagano	156	20	12.8
熊本県 Kumamoto	102	13	12.7
福島県 Fukushima	128	16	12.5
さいたま市 Saitama city	143	17	11.9
鳥取県 Tottori	43	5	11.6
大分県 Oita	151	17	11.3
埼玉県 Saitama	643	72	11.2
京都市 Kyouto city	221	23	10.4
広島市 Hiroshima city	99	10	10.1
神戸市 Kobe city	262	26	9.9
広島県 Hiroshima	185	18	9.7
滋賀県 Shiga	149	14	9.4
山梨県 Yamanashi	77	7	9.1
神奈川県 Kanagawa	334	30	9.0
愛媛県 Ehime	112	10	8.9
佐賀県 Saga	108	9	8.3
北九州市 Kitakyushu city	137	11	8.0
新潟県 Niigata	114	9	7.9
横浜市 Yokohama city	412	30	7.3
山形県 Ymagata	83	6	7.2
青森県 Aomori	112	8	7.1
大阪市 Osaka city	701	50	7.1
川崎市 Kawasaki city	184	13	7.1
福岡県 Fukuoka	272	19	7.0
沖縄県 Okinawa	176	12	6.8
宮城県 Miyagi	92	6	6.5
高知県 Kochi	77	5	6.5
香川県 Kagawa	99	6	6.1
岩手県 Iwate	83	5	6.0

外国人患者が6.0%以上(国籍不明を含む)の県・市を掲載。政令指定都市は県に含まず(別掲)  
Those prefectures and designated cities with 6% or more tuberculosis cases with foreign nationals are listed.

The figures of prefectures do not include those cases registered to designated cities in the respective prefecture, if applicable.

E.g., the figure of Kanagawa prefecture does not include those of Yokohama and Kawasaki cities.