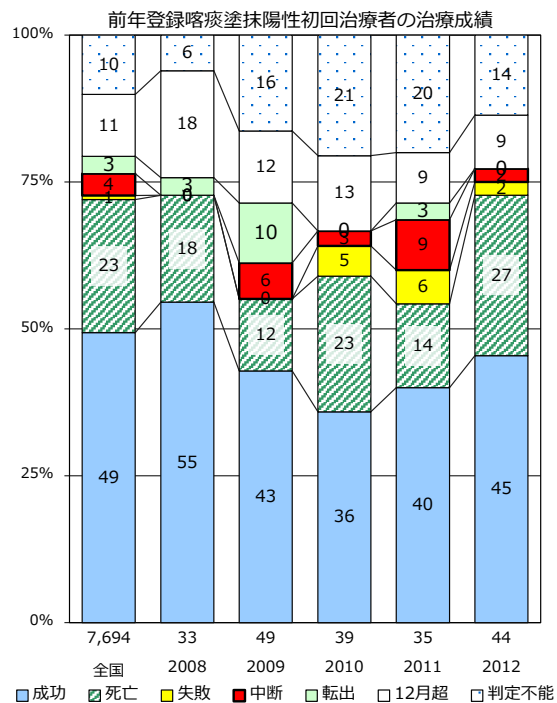
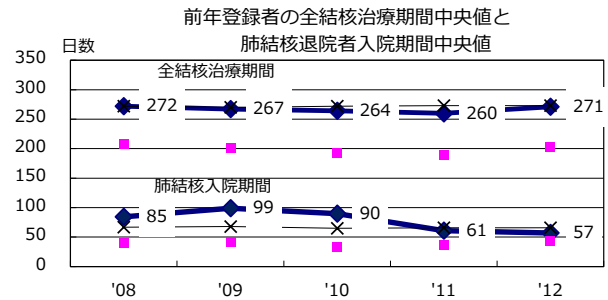
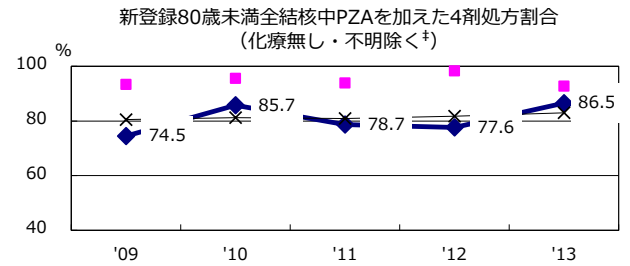
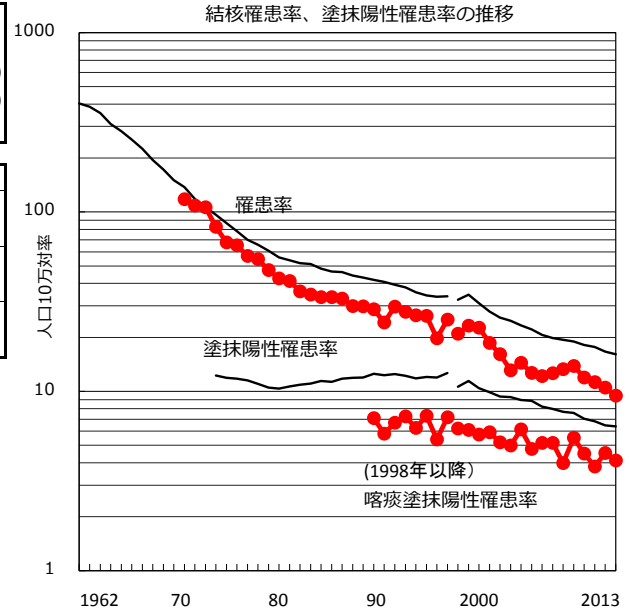
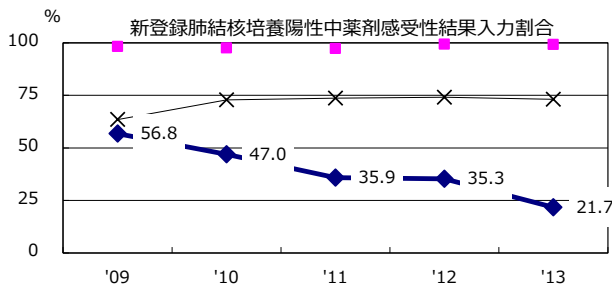
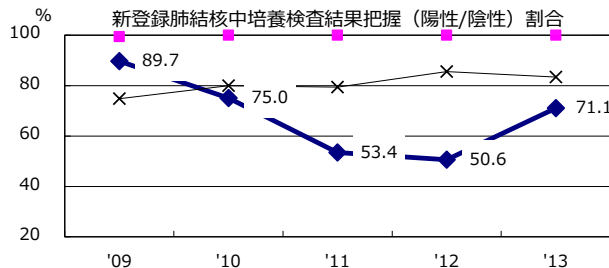
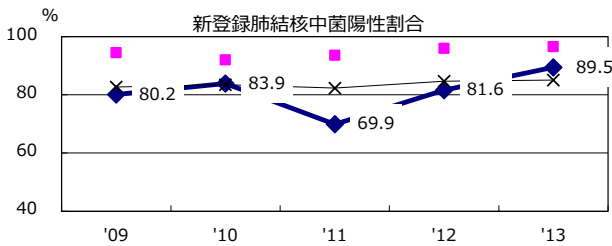
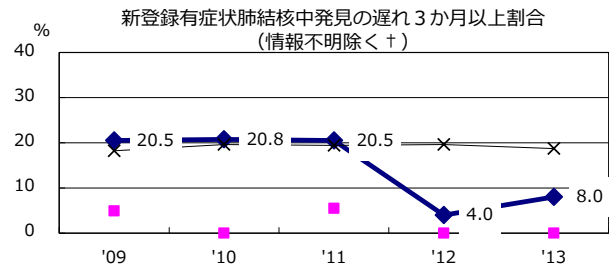
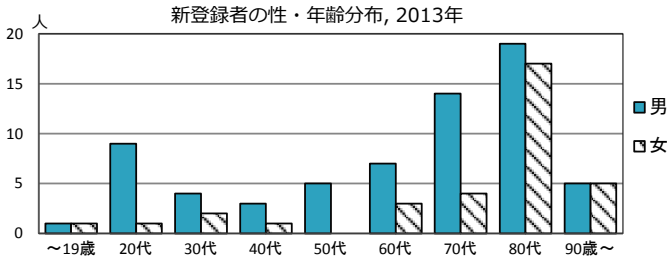


人口	1,068,511	人	(全国)
新登録中外国人	10	名	9.9% (5.2%)
新登録中ホームレス経験あり	1	名	1.0% (1.3%)
新登録30-59歳男中無職かつ生保	0	名	0.0% (8.9%)

	'09	'10	'11	'12	'13
新登録数	143	125	118	111	101
人口10万対率	13.8	12.0	11.2	10.5	9.5
新登録肺結核喀痰塗抹陽性数	57	47	40	48	44
人口10万対率	5.5	4.5	3.8	4.5	4.1
潜在性結核	22	41	62	59	46
人口10万対率	2.1	3.9	5.9	5.6	4.3



+ 発見の遅れ情報不明(%) '09 59.8 '10 31.2 '11 44.3 '12 61.5 '13 53.7

\* 化療無し・不明(%) '09 2.0 '10 0.0 '11 3.8 '12 4.3 '13 5.5