

図1 新登録肺結核患者中菌陽性割合の推移、1975～2010年

Figure 1 Proportion of bacteriologically confirmed cases among newly notified pulmonary tuberculosis patients, 1975-2010

資料と対象 Sources of information and subjects:

結核登録者の定期報告 Annual tuberculosis reports from public health centers

1975-1978: 全結核 All forms of tuberculosis

1979-1986: 肺結核 Pulmonary tuberculosis

電算化結核サーベイランスシステム Nationwide computerized tuberculosis surveillance system

1987-1997: 肺結核 Pulmonary Tuberculosis

1998-2006: 肺結核(活動性分類の変更) Pulmonary tuberculosis (New patient criteria for notification were applied)

2007-2009: 肺結核(核酸増幅法項目の追加) Pulmonary tuberculosis (Item of nucleic acid amplification was added)

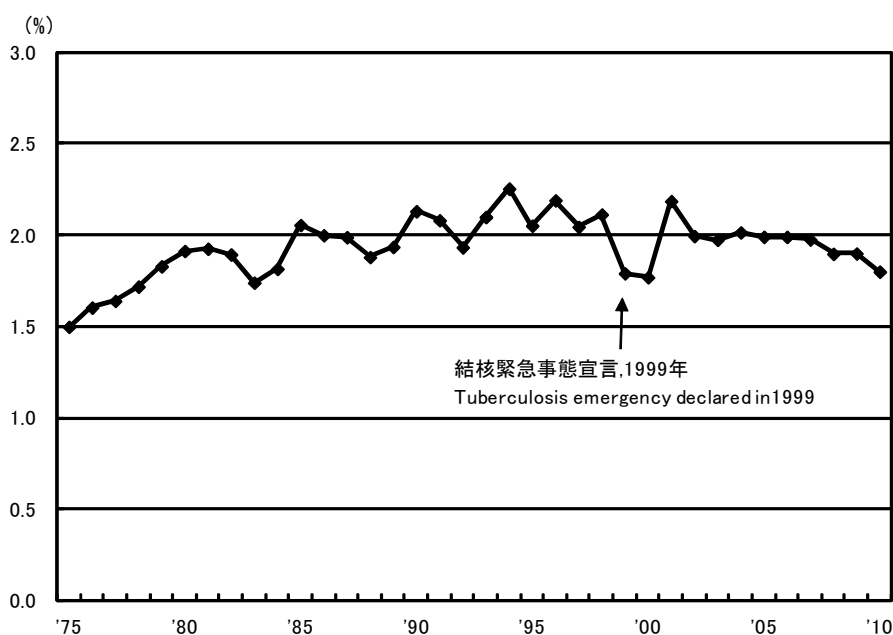


図2 新登録肺結核患者中胸部X線写真での広汎空洞型割合の推移、1975～2010年

Figure 2 Proportion of far-advanced cavitory cases among newly notified pulmonary tuberculosis patients, 1975-2010

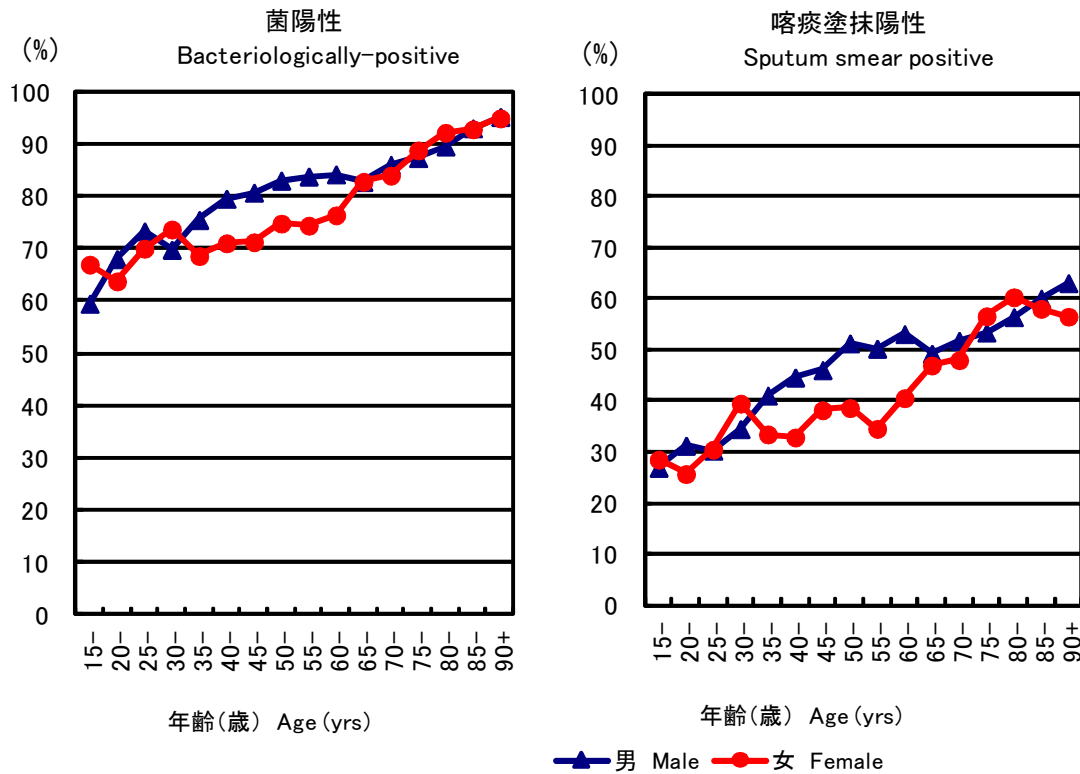


图3 新登録肺結核患者中菌陽性割合、性・年齢5歳階級別、2010年  
 Figure 3 Proportion of bacteriologically confirmed cases among newly notified pulmonary tuberculosis patients by sex and 5-year age group, 2010

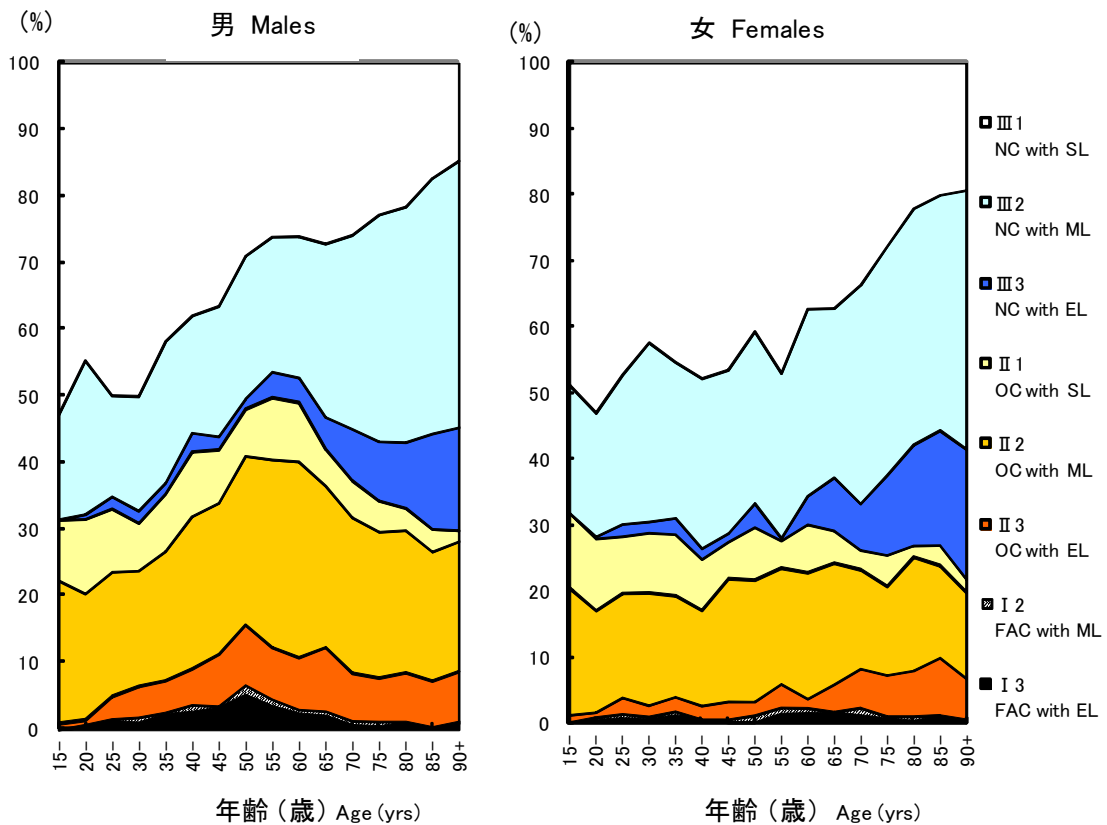


图4 新登録肺結核患者中胸部X線写真学会分類別所見割合、性・年齢5歳階級別、2010年  
 Figure 4 Proportion of cases classified by chest radiography Gakkai classification by sex and 5-year age

NC : Non-cavitory                      SL : Slight lesion  
 OC : Other cavitory                    ML : Moderate lesion  
 FAC: Far-advance cavitory           EL : Extensive lesion

表 性・職業別、30～59歳新登録肺結核患者中有空洞あるいは／かつ喀痰塗抹陽性の割合、2010年  
 Table Proportion of cavitary or/and sputum smear positive cases among newly notified pulmonary TB patients aged 30-59 years, 2010

	男 Mail								女 Female					
	肺結核 Pulmonary TB	有空洞あるいは 喀痰塗抹陽性 Cavitary or sputum smear(+)			有空洞かつ 喀痰塗抹陽性 Cavitary and sputum smear(+)			肺結核 Pulmonary TB	有空洞あるいは 喀痰塗抹陽性 Cavitary or sputum smear(+)			有空洞かつ 喀痰塗抹陽性 Cavitary and sputum smear(+)		
		n	%	Ratio	n	%	Ratio		n	%	Ratio	n	%	Ratio
接客業 Service workers	186	112	60.2	1.5	64	34.4	2.1	135	72	53.3	1.4	32	23.7	2.1
医療職 Medical workers	67	27	40.3	1.0	11	16.4	1.0	271	103	38.0	1.0	31	11.4	1.0
教員・保育士 Teachers/ Nursery nurses	24	9	37.5	0.9	3	12.5	0.8	25	14	56.0	1.5	4	16.0	1.4
他の常用勤労者 Other regular workers	1,606	801	49.9	1.2	428	26.7	1.6	392	161	41.1	1.1	52	13.3	1.2
他の臨時・日雇 Other temporary/ daily workers	213	143	67.1	1.7	86	40.4	2.5	156	78	50.0	1.3	29	18.6	1.6
他の自営自由 Other self- employed	267	174	65.2	1.6	98	36.7	2.2	57	37	64.9	1.7	16	28.1	2.5
無職 Jobless	765	488	63.8	1.6	282	36.9	2.2	307	168	54.7	1.4	68	22.1	1.9
その他 Others	112	43	38.4	1.0	23	20.5	1.3	290	126	43.4	1.1	38	13.1	1.1
総数 Total	3,240	1,797	55.5		995	30.7		1,633	759	46.5		270	16.5	

その他: 家事、学生、不明 Others: Houskeepers/ Students/ Unknown

Ratio: 医療職の割合に対するその他割合の比 The ratio of each proportion to that of medical workers

表1 新登録結核患者中「HIV合併あり」と報告された患者数、性・年齢階層別、2010年および2007～2010年  
 Table 1 Number of newly notified tuberculosis patients with HIV infection, by sex and age group, 2010 and 2007-2010

年齢階層 Age group	喀痰塗抹陽性 Sputum smear positive		他結核菌陽性 Other bacteriologically-positive		菌陰性結核 Bacteriologically-negative		肺外結核 Extra-pulmonary		総数 Total	
	男 M	女 F	男 M	女 F	男 M	女 F	男 M	女 F	男 M	女 F
2010年 2010 Calendar year										
総計 Total	18 (2)	1 (1)	12 (2)	1	6 (1)	0	13 (5)	2	49 (10)	4 (1)
0-19	0	0	0	0	0	0	0	0	0	0
20-24	0	0	0	0	0	0	0	0	0	0
25-29	2 (1)	1 (1)	0	0	0	0	1 (1)	0	3 (2)	1 (1)
30-34	1 (1)	0	3	1	0	0	2 (2)	1	6 (3)	2
35-39	3	0	2 (1)	0	0	0	2	0	7 (1)	0
40-44	2	0	2 (1)	0	3 (1)	0	3 (1)	0	10 (3)	0
45-49	1	0	3	0	0	0	4 (1)	0	8 (1)	0
50-54	4	0	1	0	0	0	0	0	5	0
55-59	1	0	0	0	0	0	1	0	2	0
60-64	1	0	1	0	1	0	0	0	3	0
65-69	2	0	0	0	0	0	0	0	2	0
70-74	0	0	0	0	1	0	0	0	1	0
75-79	1	0	0	0	1	0	0	1	2	1
80+	0	0	0	0	0	0	0	0	0	0
2007～2010年 2007-2010 Calendar year										
総計 Total	66 (6)	9 (8)	36 (7)	4 (3)	21 (1)	2 (1)	81 (18)	10 (6)	204 (32)	25 (18)
0-19	1 (1)	0	0	0	0	0	0	0	1 (1)	0
20-24	2 (1)	0	0	0	0	0	1	1	3 (1)	1
25-29	4 (2)	2 (2)	1 (1)	1 (1)	0	0	6 (1)	0	11 (4)	3 (3)
30-34	7 (2)	4 (4)	5	2 (1)	1	1 (1)	10 (4)	2 (1)	23 (6)	9 (7)
35-39	12	1 (1)	12 (4)	1 (1)	4	0	13 (3)	2 (2)	41 (7)	4 (4)
40-44	14	1 (1)	7 (2)	0	6 (1)	1	20 (8)	3 (2)	47 (11)	5 (3)
45-49	6	0	3	0	2	0	15 (2)	0	26 (2)	0
50-54	6	0	4	0	2	0	5	0	17	0
55-59	3	0	1	0	3	0	5	1 (1)	12	1 (1)
60-64	4	1	2	0	1	0	3	0	10	1
65-69	5	0	0	0	0	0	0	0	5	0
70-74	0	0	1	0	1	0	1	0	3	0
75-79	2	0	0	0	1	0	2	1	5	1
80+	0	0	0	0	0	0	0	0	0	0

( ): 外国人患者の再掲 Re-count of foreigners

HIV: Human Immunodeficiency Virus. M: male patients, F: female patients.

(%)

■ 男 Male ■ 女 Female

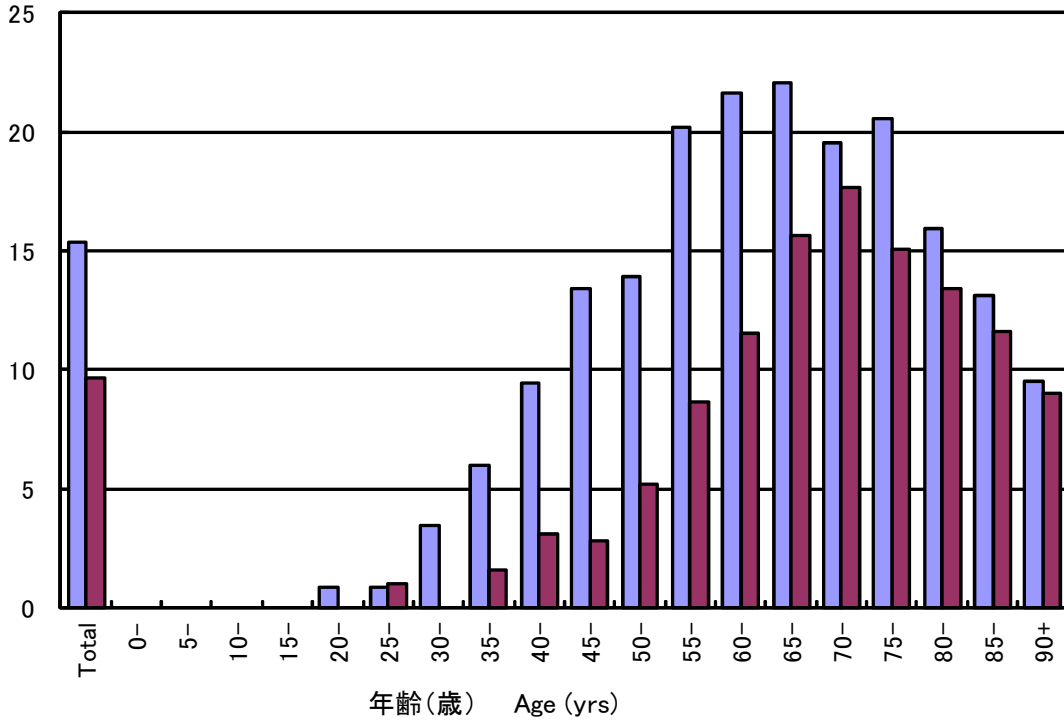


図 新登録結核患者中「糖尿病合併あり」と報告された患者の割合、性・年齢階層別、2010年  
Figure Proportion of newly notified tuberculosis patients with diabetes mellitus in each age-group by sex, 2010

表2 新登録肺結核患者から分離培養された結核菌の抗結核薬剤感受性検査結果、治療歴別、2007~2010年  
Table 2 Drug susceptibility test results among newly notified pulmonary tuberculosis patients, by treatment history, 2007-2010

治療歴、菌検査状況、耐性状況 Treatment history, Culture examination results, Drug susceptibility test results	2007					2008					2009					2010				
	n	%	%	%	%	n	%	%	%	%	n	%	%	%	%	n	%	%	%	%
<b>総数 Total</b>																				
<b>肺結核 Pulmonary tuberculosis</b>	19,893	100%				19,393	100%				18,912	100%				18,328	100%			
培養結果把握 Culture results obtained	12,690	63.8	100%			12,087	62.3	100%			14,146	74.8	100%			14,656	80.0	100%		
培養陽性 Culture positive	9,983	50.2	78.7	100%		9,480	48.9	78.4	100%		10,902	57.6	77.1	100%		11,495	62.7	78.4	100%	
感受性結果把握 DST results obtained	4,173			41.8	100%	4,332			45.7	100%	6,920			63.5	100%	8,380			72.9	100%
多剤耐性 MDR	50			1.2	48	1.1			56	0.8	68			0.8	68	0.8			0.8	0.8
INH耐性 Any INH resistance	258			6.2	211	4.9			346	5.0	396			5.0	396	4.7			4.7	4.7
RFP耐性 Any RFP resistance	72			1.7	64	1.5			80	1.2	95			1.2	95	1.1			1.1	1.1
1剤以上耐性 Any resistance	628			15.0	550	12.7			903	13.0	1,025			12.2	1,025	12.2			12.2	12.2
<b>初回治療 New treatment</b>																				
肺結核 Pulmonary tuberculosis	18,220	100%				17,515	100%				17,125	100%				16,481	100%			
培養結果把握 Culture results obtained	11,602	63.7	100%			10,845	61.9	100%			12,801	74.8	100%			13,164	79.9	100%		
培養陽性 Culture positive	9,148	50.2	78.8	100%		8,540	48.8	78.7	100%		9,899	57.8	77.3	100%		10,374	62.9	78.8	100%	
感受性結果把握 DST results obtained	3,752			41.0	100%	3,885			45.5	100%	6,276			63.4	100%	7,553			72.8	100%
多剤耐性 MDR	23			0.6	28	0.7			34	0.5	38			0.5	38	0.5			0.5	0.5
INH耐性 Any INH resistance	194			5.2	163	4.2			276	4.4	311			4.4	311	4.1			4.1	4.1
RFP耐性 Any RFP resistance	36			1.0	39	1.0			50	0.8	56			0.8	56	0.7			0.7	0.7
1剤以上耐性 Any resistance	516			13.8	470	12.1			780	12.4	876			12.4	876	11.6			11.6	11.6
<b>再治療 Re-treatment</b>																				
肺結核 Pulmonary tuberculosis	1,409	100%				1,542	100%				1,468	100%				1,461	100%			
培養結果把握 Culture results obtained	946	67.1	100%			1,059	68.7	100%			1,134	77.2	100%			1,217	83.3	100%		
培養陽性 Culture positive	713	50.6	75.4	100%		779	50.5	73.6	100%		830	56.5	73.2	100%		885	60.6	72.7	100%	
感受性結果把握 DST results obtained	376			52.7	100%	391			50.2	100%	559			67.3	100%	694			78.4	100%
多剤耐性 MDR	27			7.2	20	5.1			20	3.6	27			3.6	27	3.9			3.9	3.9
INH耐性 Any INH resistance	63			16.8	48	12.3			65	11.6	79			11.6	79	11.4			11.4	11.4
RFP耐性 Any RFP resistance	36			9.6	24	6.1			28	5.0	36			5.0	36	5.2			5.2	5.2
1剤以上耐性 Any resistance	107			28.5	75	19.2			112	20.0	132			20.0	132	19.0			19.0	19.0
<b>治療歴不明 No information about treatment history</b>																				
肺結核 Pulmonary tuberculosis	264	100%				336	100%				319	100%				386	100%			
培養結果把握 Culture results obtained	142	53.8	100%			183	54.5	100%			211	66.1	100%			275	71.2	100%		
培養陽性 Culture positive	122	46.2	85.9	100%		161	47.9	88.0	100%		173	54.2	82.0	100%		236	61.1	85.8	100%	
感受性結果把握 DST results obtained	45			36.9	100%	56			34.8	100%	85			49.1	100%	133			56.4	100%
多剤耐性 MDR	0			0.0	0	0.0			2	2.4	3			2.4	3	4.5			4.5	4.5
INH耐性 Any INH resistance	1			2.2	0	1.8			2	2.4	3			2.4	3	2.3			2.3	2.3
RFP耐性 Any RFP resistance	0			0.0	1	8.9			11	12.9	17			12.9	17	12.8			12.8	12.8
1剤以上耐性 Any resistance	5			11.1	5	5			5	12.9	17			12.9	17	12.8			12.8	12.8

DST: Drug susceptibility test. MDR: Multi-drug resistant, i.e., resistant to at least INH and RFP. INH: Isoniazid. RFP: Rifampicin.  
感受性結果は重複あり。Cases having drug resistance are counted independently by drug.

表3 新登録肺結核患者の薬剤感受性検査結果、性・年齢階層別、2010年および2007～2010年

Table 3 Drug susceptibility test results among newly notified pulmonary tuberculosis patients, by sex and age group, 2010 and 2007-2010

年齢階層 Age group	総数 Total										初回治療(再掲) New treatment (Re-count)									
	男 Males					女 Females					男 Males					女 Females				
	感受性結果把握	多剤耐性	INH耐性	RFP耐性	1剤以上耐性	感受性結果把握	多剤耐性	INH耐性	RFP耐性	1剤以上耐性	感受性結果把握	多剤耐性	INH耐性	RFP耐性	1剤以上耐性	感受性結果把握	多剤耐性	INH耐性	RFP耐性	1剤以上耐性
DST results obtained	MDR	Any INH resistance	Any RFP resistance	Any resistance	DST results obtained	MDR	Any INH resistance	Any RFP resistance	Any resistance	DST results obtained	MDR	Any INH resistance	Any RFP resistance	Any resistance	DST results obtained	MDR	Any INH resistance	Any RFP resistance	Any resistance	
2010年 2010 Calendar year																				
総数 Total	5,649	43	277	57	720	2,731	25	119	38	305	5,012	26	217	35	615	2,541	12	94	21	261
0-19	47	2	3	2	10	43		3	0	6	45	2	3	2	10	42		3	0	6
20-29	296	4	15	4	52	221	6	20	7	40	288	3	12	3	49	209	3	17	4	36
30-39	379	1	21	2	54	313	3	14	7	42	361	1	21	2	52	298	2	12	4	36
40-49	456	6	27	7	63	191	3	10	6	29	418	3	22	4	56	177	1	8	4	26
50-59	677	5	40	8	95	184	1	8	2	19	616	2	31	3	81	177	1	7	1	17
60-69	1,090	4	51	8	164	277	2	12	3	34	979	3	47	6	152	261	1	10	1	29
70-79	1,251	15	61	19	153	541	6	25	7	64	1,067	10	40	12	115	503	3	18	4	56
80+	1,453	6	59	7	129	961	4	27	6	71	1,238	2	41	3	100	874	2	19	3	55
2007～2010年 2007-2010 Calendar year																				
総数 Total	16,131	138	824	198	2,148	7,674	84	387	113	958	14,364	79	641	116	1,821	7,102	44	303	65	821
0-19	112	2	7	2	26	107	1	10	1	20	109	2	7	2	26	101	1	9	1	18
20-29	878	15	50	20	150	709	19	58	25	132	844	12	44	16	142	672	12	50	17	120
30-39	1,157	8	72	15	184	870	10	53	19	135	1,091	5	66	12	171	828	7	46	12	120
40-49	1,352	12	81	15	206	612	11	39	16	101	1,255	6	70	8	181	579	7	35	12	94
50-59	2,231	24	119	37	342	537	7	29	9	73	2,048	14	99	22	302	500	1	20	3	63
60-69	3,079	24	177	38	466	764	9	44	10	111	2,761	15	147	21	403	707	3	29	3	88
70-79	3,542	36	177	48	454	1,497	15	67	17	172	3,027	17	112	22	346	1,357	6	46	8	140
80+	3,780	17	141	23	320	2,578	12	87	16	214	3,229	8	96	13	250	2,358	7	68	9	178
2007～2010年 2007-2010 Calendar year																				
総数 Total	100%	0.9	5.1	1.2	13.3	100%	1.1	5.0	1.5	12.5	100%	0.5	4.5	0.8	12.7	100%	0.6	4.3	0.9	11.6
0-19	100	1.8	6.3	1.8	23.2	100	0.9	9.3	0.9	18.7	100	1.8	6.4	1.8	23.9	100	1.0	8.9	1.0	17.8
20-29	100	1.7	5.7	2.3	17.1	100	2.7	8.2	3.5	18.6	100	1.4	5.2	1.9	16.8	100	1.8	7.4	2.5	17.9
30-39	100	0.7	6.2	1.3	15.9	100	1.1	6.1	2.2	15.5	100	0.5	6.0	1.1	15.7	100	0.8	5.6	1.4	14.5
40-49	100	0.9	6.0	1.1	15.2	100	1.8	6.4	2.6	16.5	100	0.5	5.6	0.6	14.4	100	1.2	6.0	2.1	16.2
50-59	100	1.1	5.3	1.7	15.3	100	1.3	5.4	1.7	13.6	100	0.7	4.8	1.1	14.7	100	0.2	4.0	0.6	12.6
60-69	100	0.8	5.7	1.2	15.1	100	1.2	5.8	1.3	14.5	100	0.5	5.3	0.8	14.6	100	0.4	4.1	0.4	12.4
70-79	100	1.0	5.0	1.4	12.8	100	1.0	4.5	1.1	11.5	100	0.6	3.7	0.7	11.4	100	0.4	3.4	0.6	10.3
80+	100	0.4	3.7	0.6	8.5	100	0.5	3.4	0.6	8.3	100	0.2	3.0	0.4	7.7	100	0.3	2.9	0.4	7.5

DST: Drug susceptibility test. MDR: Multi-drug resistance, i.e., resistant to at least INH and RFP. INH: Isoniazid. RFP: Rifampicin.

表4 新登録肺結核患者の薬剤感受性検査結果および耐性率、性・年齢階層別、2007～2010年（再掲;外国人）

Table 4 Drug susceptibility test results among newly notified pulmonary tuberculosis patients, by sex and age group, 2010 and 2007-2010 (Re-count of foreigners)

年齢階層 Age group	総数 Total										初回治療(再掲) New treatment (Re-count)									
	男 Male					女 Female					男 Male					女 Female				
	感受性結果把握	多剤耐性	INH耐性	RFP耐性	1剤以上耐性	感受性結果把握	多剤耐性	INH耐性	RFP耐性	1剤以上耐性	感受性結果把握	多剤耐性	INH耐性	RFP耐性	1剤以上耐性	感受性結果把握	多剤耐性	INH耐性	RFP耐性	1剤以上耐性
DST results obtained	MDR	Any INH resistance	Any RFP resistance	Any resistance	DST results obtained	MDR	Any INH resistance	Any RFP resistance	Any resistance	DST results obtained	MDR	Any INH resistance	Any RFP resistance	Any resistance	DST results obtained	MDR	Any INH resistance	Any RFP resistance	Any resistance	
2007～2010年 2007-2010 Calendar year																				
総数 Total	364	15	29	18	66	435	24	55	32	104	345	10	20	13	59	405	17	46	23	90
0-19	14	1	2	1	6	16	1	2	1	20	14	1	2	1	6	15	1	1	1	1
20-29	165	11	17	14	31	196	17	32	22	60	160	8	11	11	28	187	12	27	16	54
30-39	79	2	5	2	11	114	3	9	5	19	77	1	4	1	10	104	1	7	2	16
40-49	41	1	5	1	11	56	1	7	2	14	37	0	3	0	8	51	1	7	2	13
50-59	21	0	0	0	1	21	0	2	0	3	18	0	0	0	1	18	0	1	0	1
60-69	18	0	0	0	5	14	1	2	1	3	15	0	0	0	5	14	1	2	1	3
70-79	15	0	0	0	1	8	1	1	1	2	14	0	0	0	1	7	1	1	1	1
80+	11	0	0	0	0	10	0	0	0	1	10	0	0	0	0	9	0	0	0	1
2007～2010年 2007-2010 Calendar year																				
総数 Total	100%	4.1	8.0	4.9	18.1	100%	5.5	12.6	7.4	23.9 #	100%	2.9	5.8	3.8	17.1	100%	4.2	11.4	5.7	22.2
0-19	100	7.1	14.3	7.1	42.9	100	6.3	12.5	6.3	12.5	100	7.1	14.3	7.1	42.9	100	6.7	14.4	6.7	6.7
20-29	100	6.7	10.3	8.5	18.8	100	8.7	16.3	11.2	30.6	100	5.0	6.9	6.9	17.5	100	6.4	14.4	8.6	28.9
30-39	100	2.5	6.3	2.5	13.9	100	2.6	7.9	4.4	16.7	100	1.3	5.2	1.3	13.0	100	1.0	6.7	1.9	15.4
40-49	100	2.4	12.2	2.4	26.8	100	1.8	12.5	3.6	25.0	100	0.0	8.1	0.0	21.6	100	2.0	13.7	3.9	25.5
50-59	100	0.0	0.0	0.0	4.8	100	0.0	9.5	0.0	14.3	100	0.0	0.0	0.0	5.6	100	0.0	5.6	0.0	5.6
60-69	100	0.0	0.0	0.0	27.8	100	7.1	14.3	7.1	21.4	100	0.0	0.0	0.0	33.3	100	7.1	14.3	7.1	21.4
70-79	100	0.0	0.0	0.0	6.7	100	12.5	12.5	12.5	25.0	100	0.0	0.0	0.0	7.1	100	14.3	14.3	14.3	14.3
80+	100	0.0	0.0	0.0	0.0	100	0.0	0.0	0.0	10.0	100	0.0	0.0	0.0	0.0	100	0.0	0.0	0.0	11.1

DST: Drug susceptibility test. MDR: Multi-drug resistance, i.e., resistant to at least INH and RFP. INH: Isoniazid. RFP: Rifampicin.