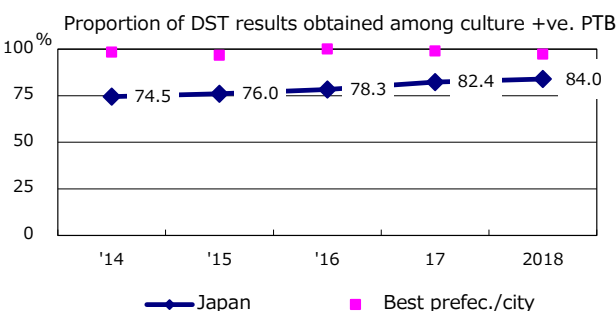
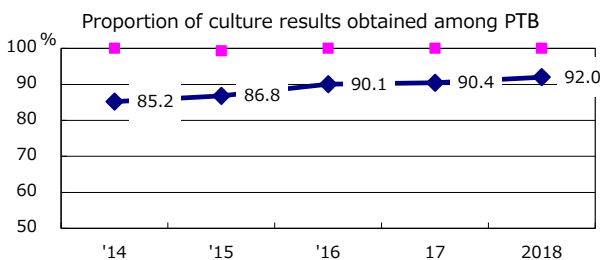
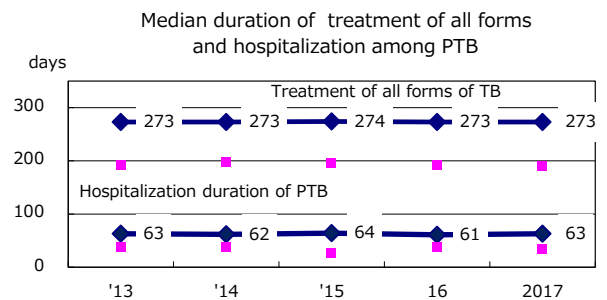
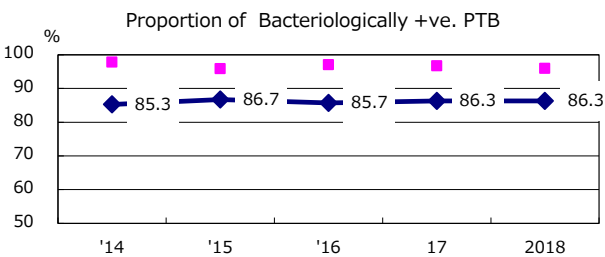
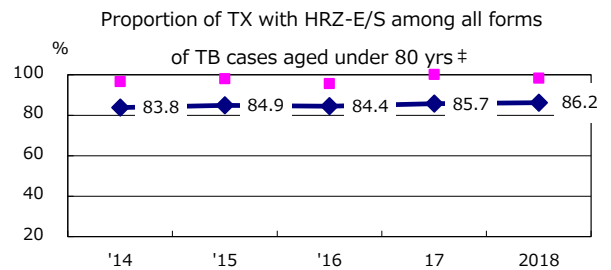
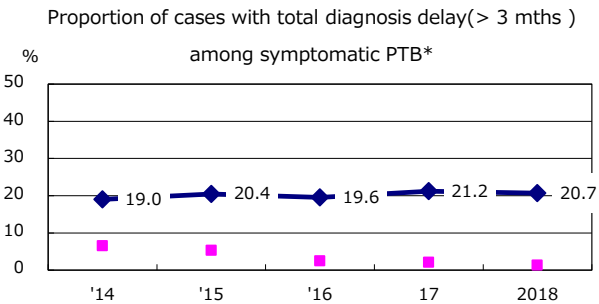
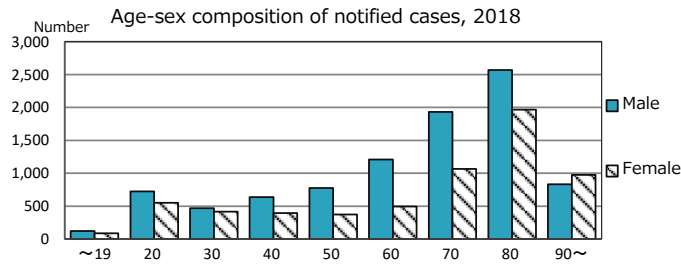
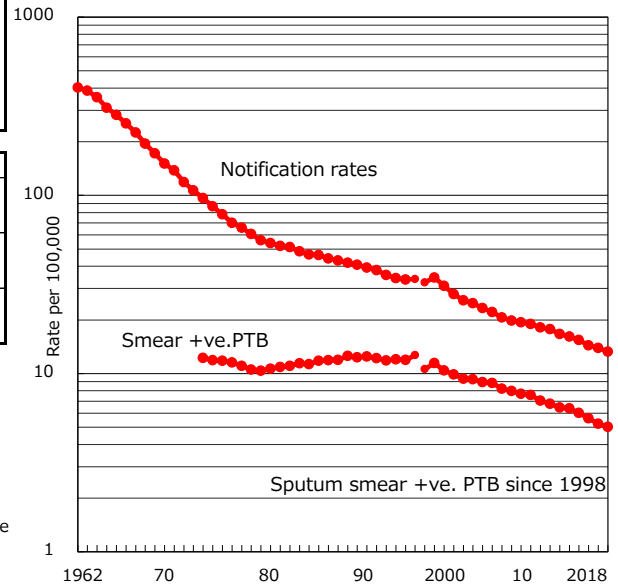


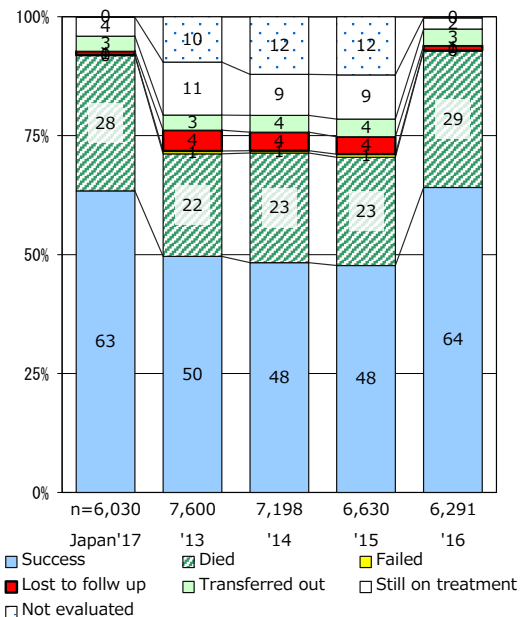
TB statistics in 2018 ( Population in Japan 126,443,180 )	
Among newly notified :	
Foreign borns	1,667 10.7%
TB cases with homeless history	139 0.9%
Male aged 35-59, without job and receiving public assistance	137 7.3%

Trends	'14	'15	'16	17	2018
Notified cases	19,615	18,280	17,625	16,789	15,590
Rate per 100,000 population	15.4	14.4	13.9	13.3	12.3
Sputum smear +ve. PTB	7,651	7,131	6,642	6,359	5,781
Rate per 100,000 population	6.0	5.6	5.2	5.0	4.6
Latent Tuberculosis Infection	7,562	6,675	7,477	7,255	7,414
Rate per 100,000 population	6.0	5.3	5.9	5.7	5.9

Trends of TB notification rates, all forms and smear +ve.PTB



Treatment outcomes of new sputum smear +ve.TB



PTB : pulmonary TB

† Excluding unknown delay(%)	'14	'15	'16	17	2018
	37.7	36.5	32.9	33.0	27.5

‡ Excluding unknown Tx(%)	'14	'15	'16	17	2018
	2.7	2.6	2.5	2.7	2.6