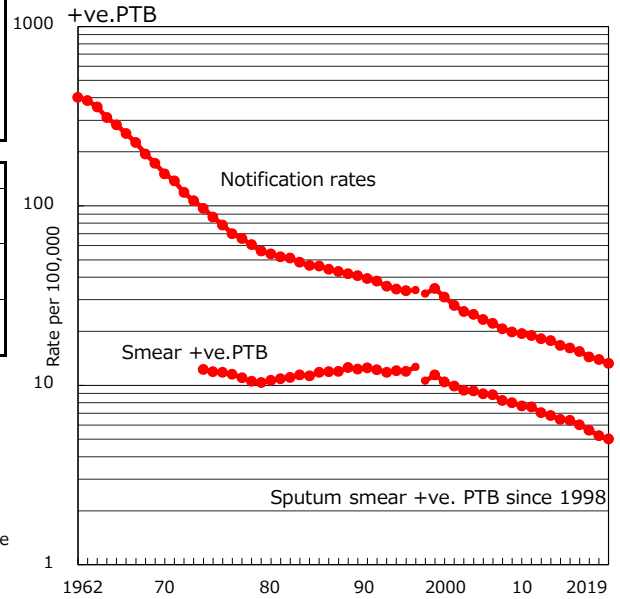


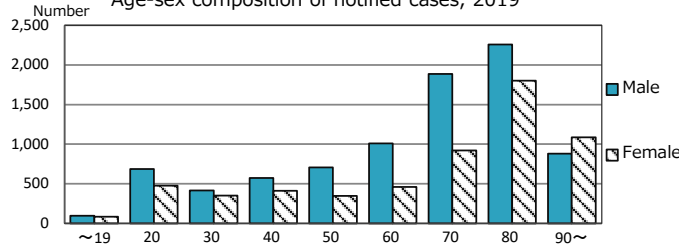
TB statistics in 2019 (Population in Japan 126,166,948)	
Among newly notified :	
Foreign borns	1,541 10.7%
TB cases with homeless history	132 0.9%
Male aged 35-59, without job and receiving public assistance	109 6.4%

Trends	'15	'16	'17	'18	2019
Notified cases	18,280	17,625	16,789	15,590	14,460
Rate per 100,000 population	14.4	13.9	13.3	12.3	11.5
Sputum smear +ve. PTB	7,131	6,642	6,359	5,781	5,505
Rate per 100,000 population	5.6	5.2	5.0	4.6	4.1
Latent Tuberculosis Infection	6,675	7,477	7,255	7,414	7,684
Rate per 100,000 population	5.3	5.9	5.7	5.9	6.1

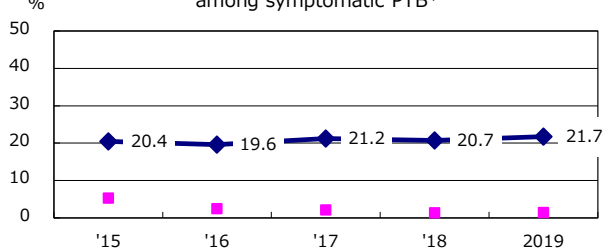
Trends of TB notification rates, all forms and smear



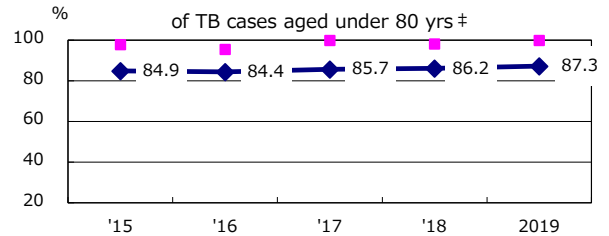
Age-sex composition of notified cases, 2019



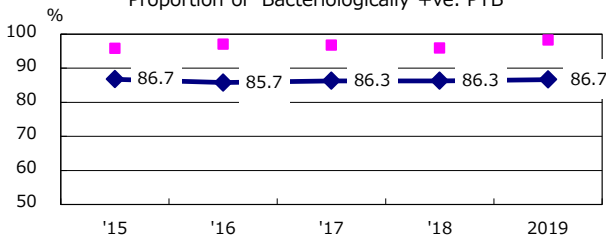
Proportion of cases with total diagnosis delay (> 3 mths) among symptomatic PTB*



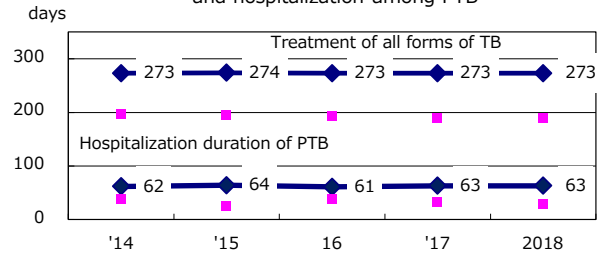
Proportion of TX with HRZ-E/S among all forms of TB cases aged under 80 yrs †



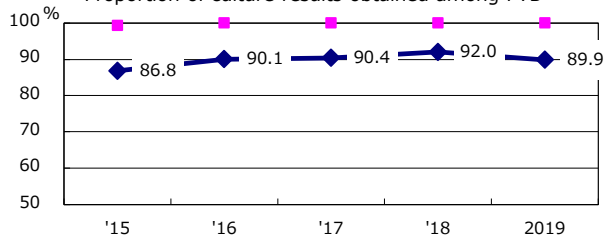
Proportion of Bacteriologically +ve. PTB



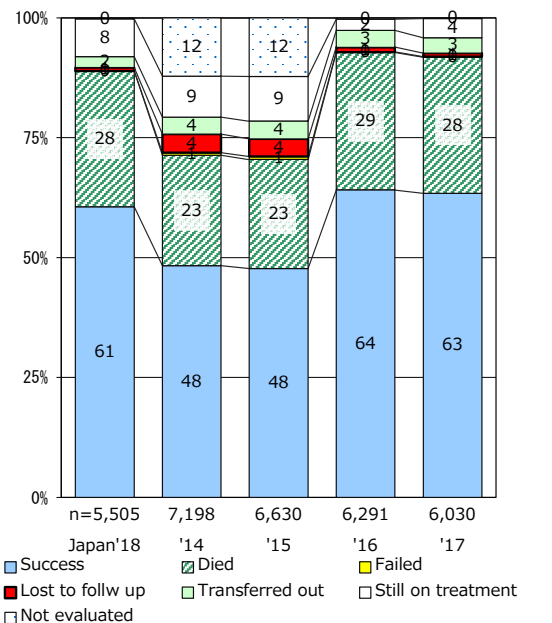
Median duration of treatment of all forms and hospitalization among PTB



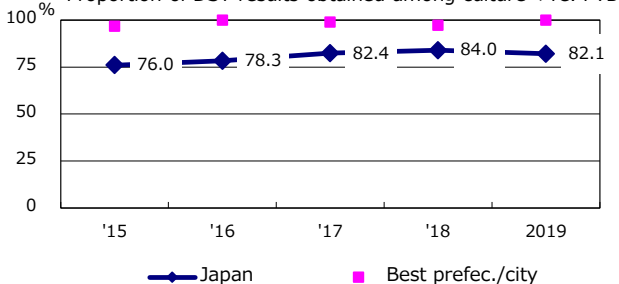
Proportion of culture results obtained among PTB



Treatment outcomes of new sputum smear +ve.TB



Proportion of DST results obtained among culture +ve. PTB



PTB : pulmonary TB

*Excluding unknown delay(%)	'15	'16	'17	'18	2019
	36.5	32.9	33.0	27.5	30.5

† Excluding unknown Tx(%)	'15	'16	'17	'18	2019
	2.6	2.5	2.7	2.6	3.2