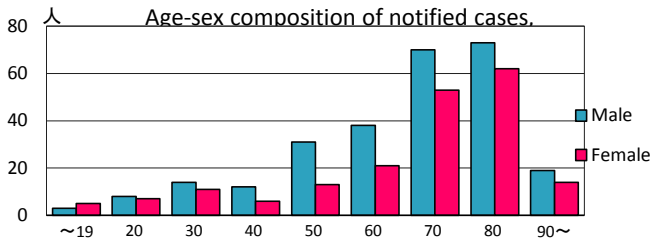
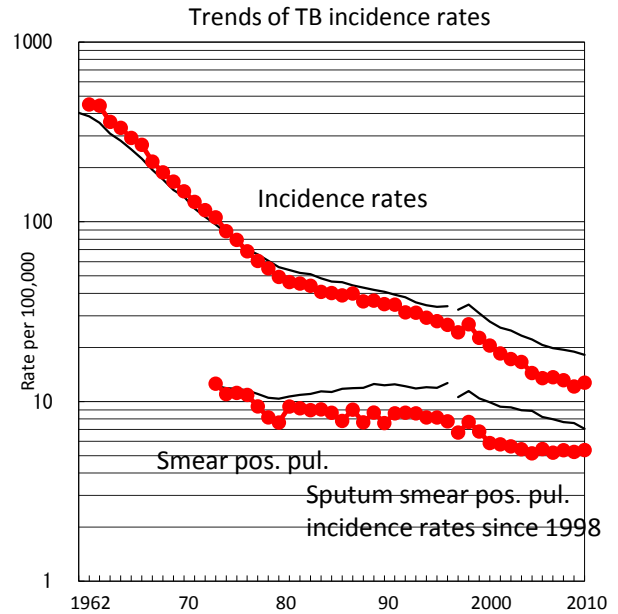
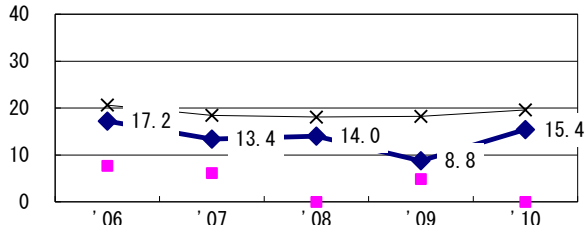


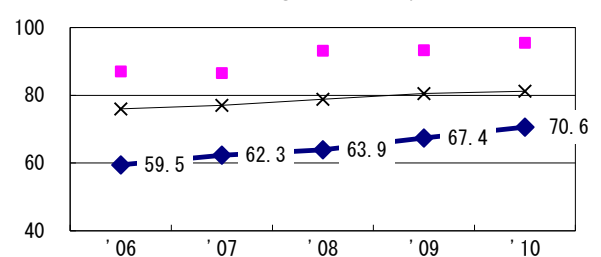
| TB statistics in 2010 | | | | | |
|--|-----------|------|------|---------|------|
| Population | 3,611,231 | | | (Japan) | |
| Foreign borns | 7 | 1.5% | | (4.1%) | |
| TB patients with homeless history | 0 | 0.0% | | (1.4%) | |
| Jobless TB patients getting public assistance, proportion among male TB patients aged 35-59yrs | 4 | 7.0% | | (10.8%) | |
| Trends | '06 | '07 | '08 | '09 | '10 |
| Notified cases | 501 | 502 | 478 | 437 | 460 |
| Rate per 100,000 | 13.5 | 13.7 | 13.1 | 12.1 | 12.7 |
| Sputum smear pos. pul. cases | 202 | 191 | 195 | 189 | 194 |
| Rate per 100,000 | 5.4 | 5.2 | 5.4 | 5.2 | 5.4 |



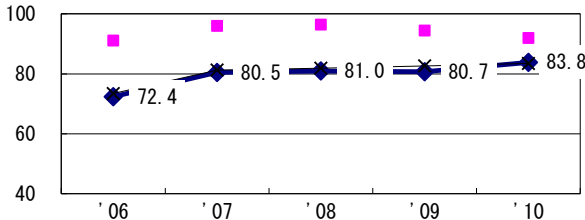
Proportion of cases with long case finding delay (>3M) among symptomatic pul. TB †



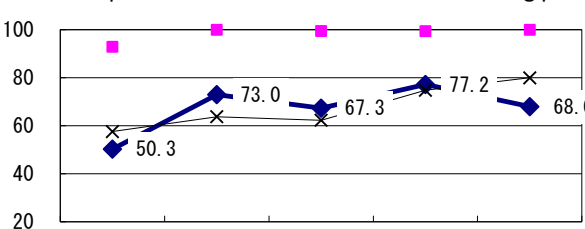
Proportion of Tx with HRZ-E/S among all forms of TB cases aged under 80 yrs ‡



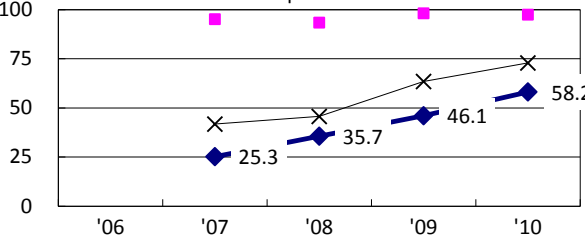
Proportion of bacillary cases among pul. TB



Proportion of culture results obtained among pul. TB

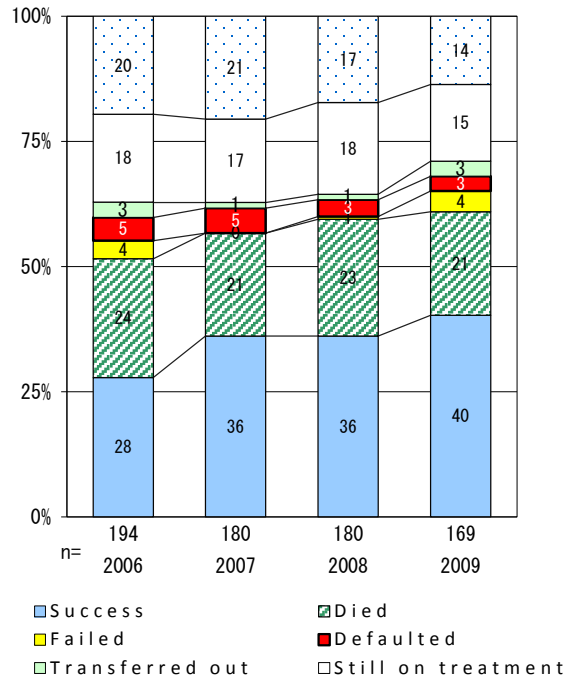


Proportion of DST results obtained among culture pos. pul. TB



—◆— Hokkaido —■— Best prefec./city —×— Japan

Treatment outcomes of new sputum smear-pos. pul. cases registered in 2006-2009



| | '06 | '07 | '08 | '09 | '10 | Year of registration | '07 | '08 | '09 | Japan |
|-----------------------------|------|------|------|------|------|---|-----|-----|-----|-------|
| †Excluding unknown delay(%) | 4.6 | 16.4 | 21.4 | 20.2 | 26.4 | Median days of treatment (all forms) | 287 | 279 | 280 | (270) |
| ‡Excluding unknown Tx (%) | 12.9 | 9.7 | 10.5 | 5.5 | 4.5 | Median days of hospitalization (pul.TB) | 66 | 82 | 77 | (68) |