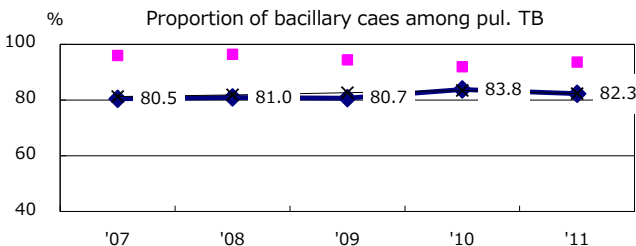
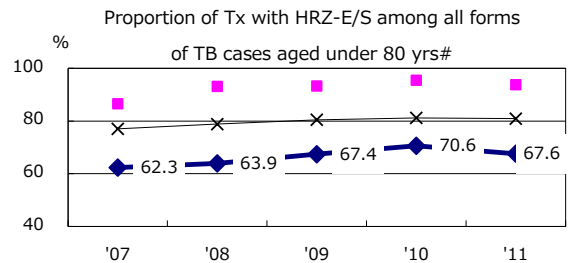
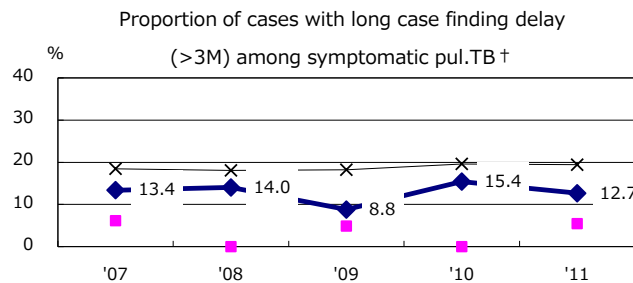
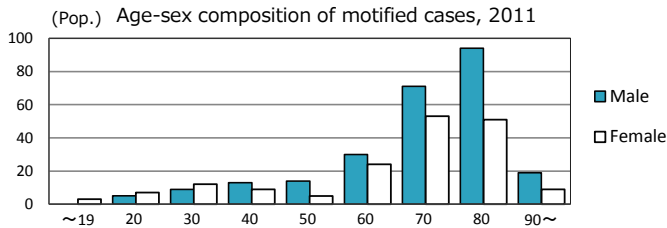
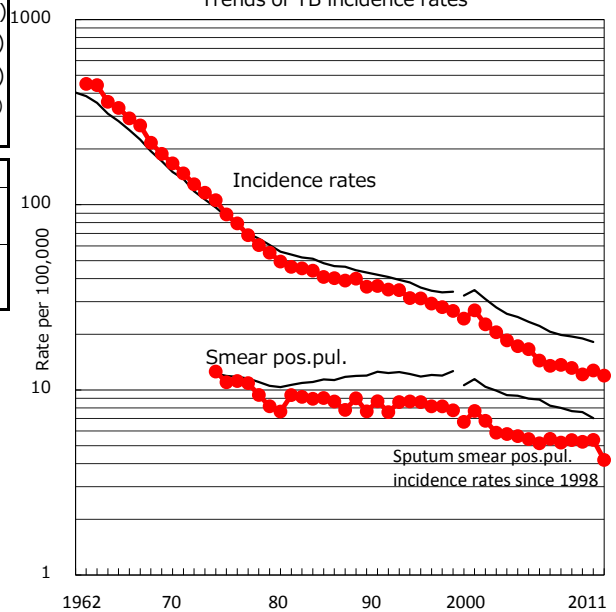
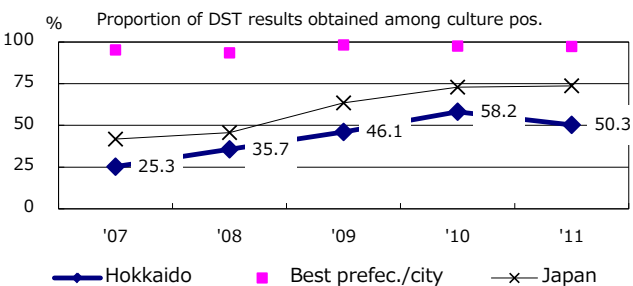
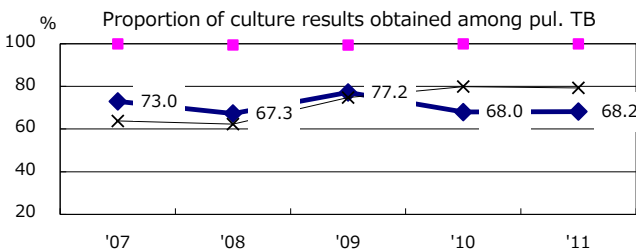
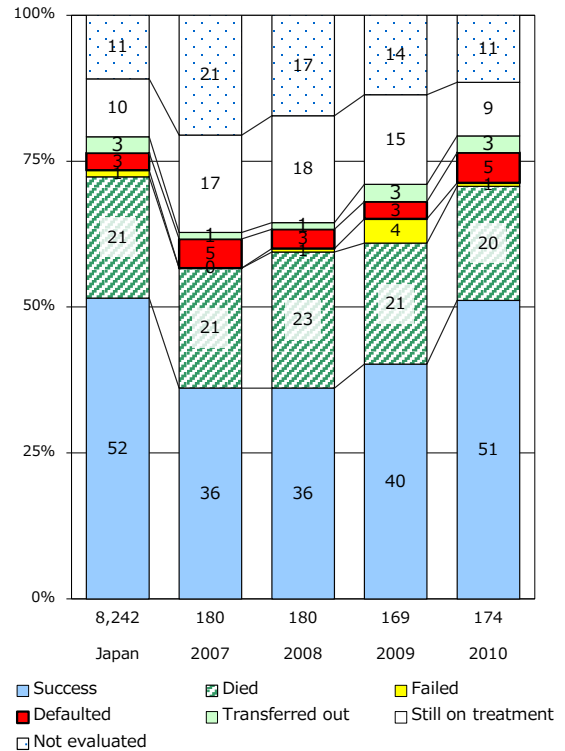


TB statistics in 2011		
Population	3,581,337	(Japan)
Foreign borns	5	1.2% (4.1%)
TB patients with homeless history	0	0.0% (1.4%)
Jobless TB patients getting public assistance, proportion among male TB patients aged 35-59 yrs	4	11.1% (10.6%)

Trends	'07	'08	'09	'10	'11
Notified cases	502	478	437	460	428
Rate per 100,000	13.7	13.1	12.1	12.7	12.0
Sputum smear pos. pul. cases	191	195	189	194	150
Rate per 100,000	5.2	5.4	5.2	5.4	4.2



Treatment outcomes of new sputum smear-pos. cases registered in 2007-2010



	'07	'08	'09	'10	'11	Year of registration	'07	'08	'09	'10	Japan
† Excluding unknown delay(%)	16.4	21.4	20.2	26.4	28.4	Median days of treatment (all forms)	287	279	280	274	(272)
# Excluding unknown Tx(%)	9.7	10.5	5.5	4.5	4.3	Median days of hospitalization (pul. TB)	66	82	77	83	(65)