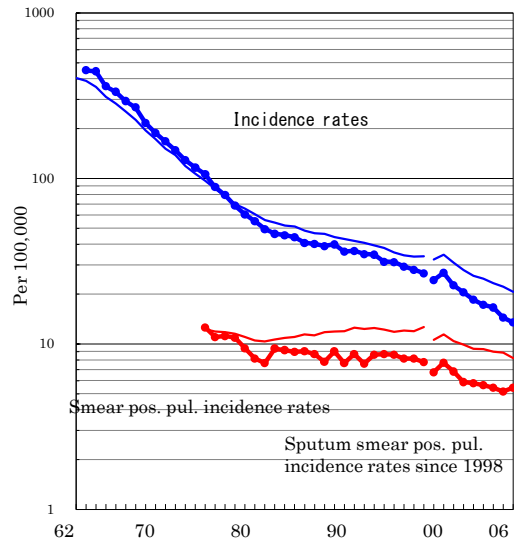


Hokkaido

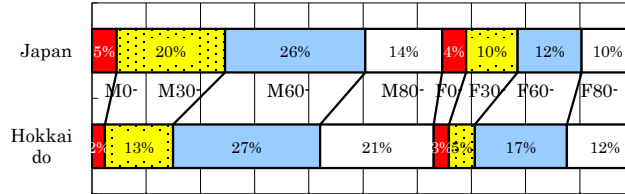
TB statistics in 2006		
Population	3,712,094	Hokkaido (Japan)
Foreigners' TB	4	0.8% (3.5%)
Estimated homeless TB among male cases aged 30-59 yrs	4	6.3% (8.9%)

Trends	02	03	04	05	06
Notified cases	708	655	627	540	501
Rate per 100,000	18.5	17.2	16.6	14.4	13.5
Sputum smear pos. pul. cases	221	214	205	193	202
Rate per 100,000	5.8	5.6	5.4	5.2	5.4

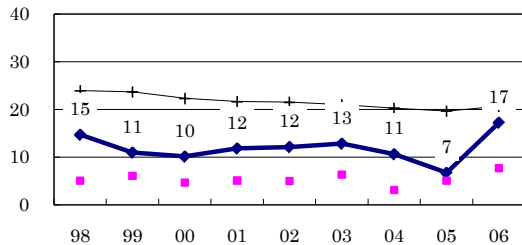
Trends of TB incidence rates



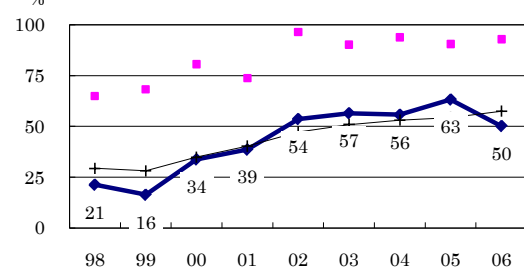
Age-sex composition of notified cases, 2006



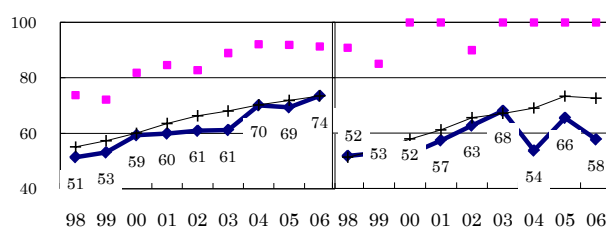
Proportion of cases with long diagnosis delay (>3M) among symptomatic pul. cases



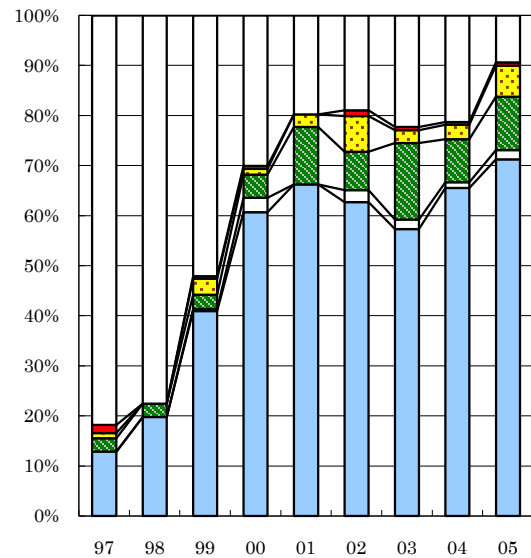
Proportion of positive or negative culture results among pulmonary cases



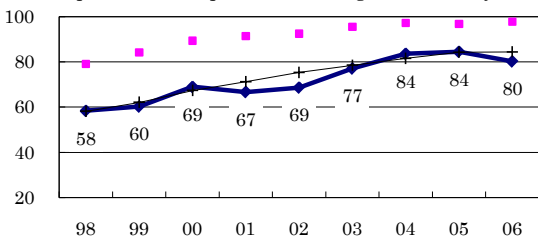
Proportion of bacillary cases among pulmonary cases



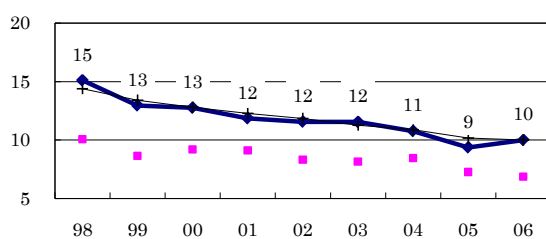
Treatment outcomes of new sputum smear-positive cases, 1997-2005 cohorts



Proportion of treatment with HRZ-E/S among new sputum smear-positive cases aged under 80 yrs



Estimated average treatment duration



Completed Others Died Failed Defaulted Unknown

	n=	187	187	215	173	157	169	157	174	160
Completed	13	20	41	61	66	63	57	66	71	
Others	0	0	0	3	0	2	2	1	2	
Died	3	3	3	5	11	8	15	9	11	
Failed	1	0	3	1	3	7	3	3	6	
Defaulted	2	0	0	1	0	1	1	1	1	
Unknown	82	78	52	30	20	19	22	21	9	