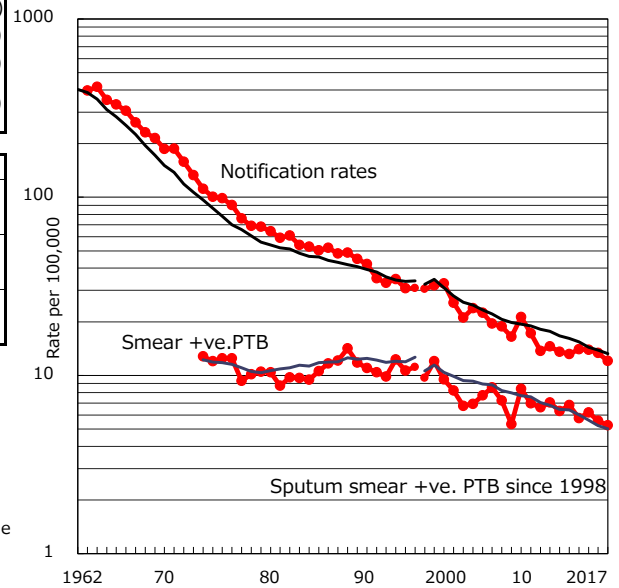


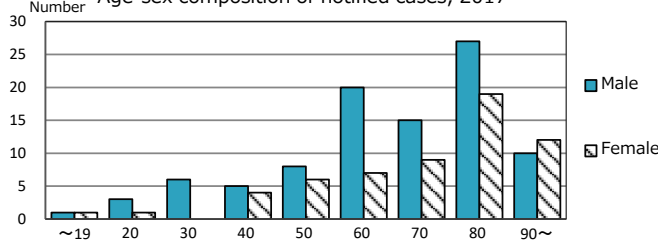
TB statistics in 2017 ( Population in Aomori 1,278,490 )	
Among newly notified :	(Japan)
Foreign borns	4 2.6% (9.1%)
TB cases with homeless history	0 0.0% (0.9%)
Male aged 35-59, without job and receiving public assistance	1 5.3% (7.3%)

Trends	'13	'14	'15	'16	2017
Notified cases	176	185	182	171	154
Rate per 100,000 population	13.2	14.0	13.9	13.4	12.0
Sputum smear +ve. PTB	91	76	81	72	67
Rate per 100,000 population	6.8	5.8	6.2	5.6	5.2
Latent Tuberculosis Infection	131	180	114	121	143
Rate per 100,000 population	9.8	13.6	8.7	9.5	11.2

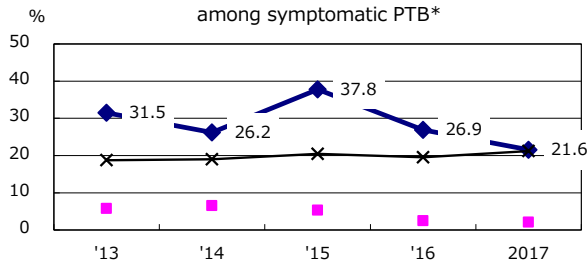
Trends of TB notification rates, all forms and smear +ve.PTB



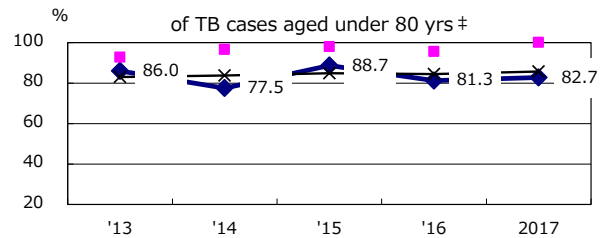
Age-sex composition of notified cases, 2017



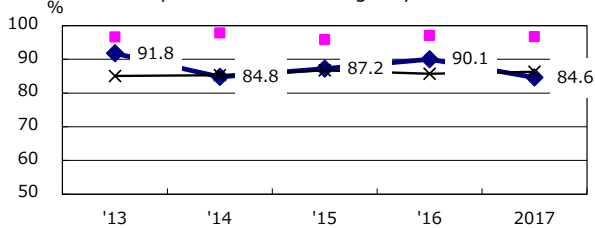
Proportion of cases with total diagnosis delay (> 3 mths) among symptomatic PTB\*



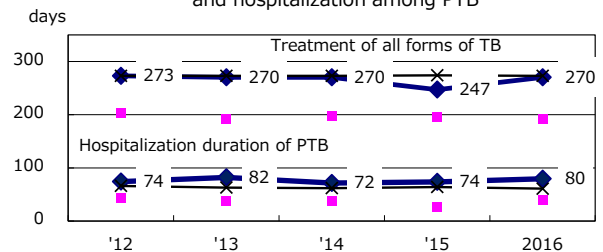
Proportion of TX with HRZ-E/S among all forms



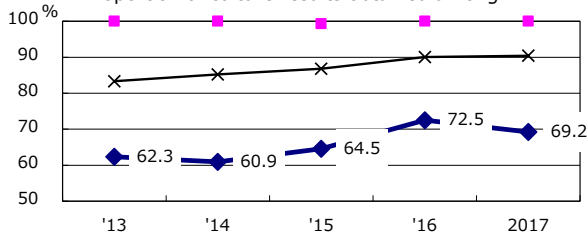
Proportion of Bacteriologically +ve. PTB



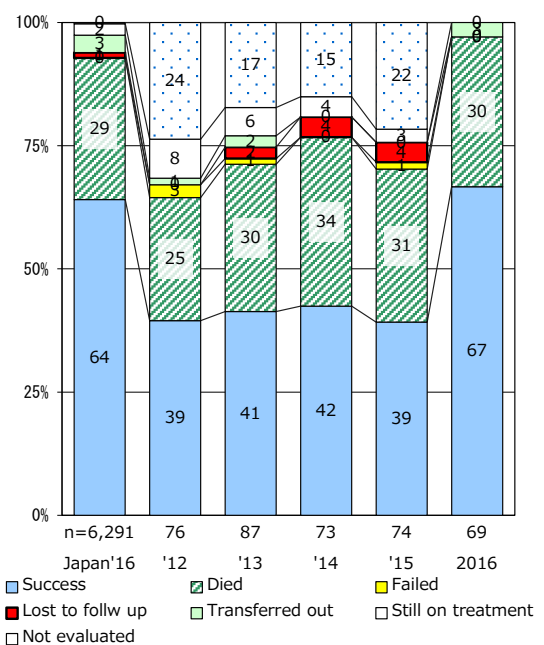
Median duration of treatment of all forms and hospitalization among PTB



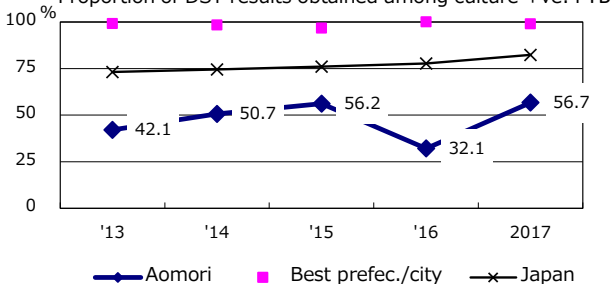
Proportion of culture results obtained among PTB



Treatment outcomes of new sputum smear +ve.TB



Proportion of DST results obtained among culture +ve. PTB



PTB : pulmonary TB

† Excluding unknown delay(%)	'13	'14	'15	'16	2017
	47.1	60.0	57.1	38.5	46.9

‡ Excluding unknown Tx(%)	'13	'14	'15	'16	2017
	6.1	0.0	0.9	2.4	5.8