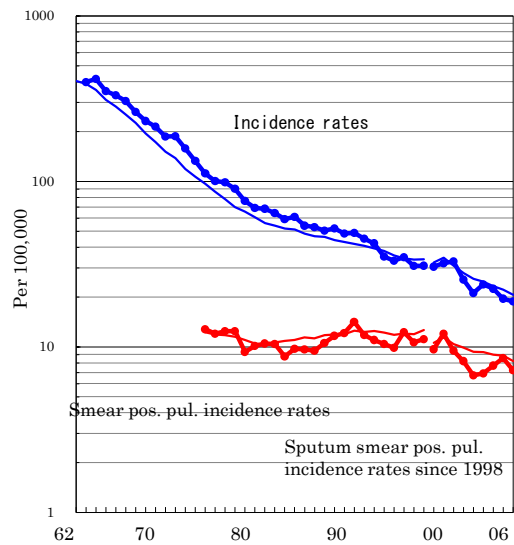


# Aomori

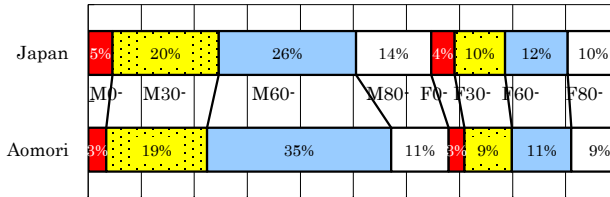
TB statistics in 2006		
Population	1,422,566	Aomori (Japan)
Foreigners' TB	1	0.4% (3.5%)
Estimated homeless TB among male cases aged 30-59 yrs	3	5.9% (8.9%)

Trends	02	03	04	05	06
Notified cases	310	348	326	281	268
Rate per 100,000	21.1	23.8	22.4	19.6	18.8
Sputum smear pos. pul. cases	99	101	112	123	103
Rate per 100,000	6.7	6.9	7.7	8.6	7.2

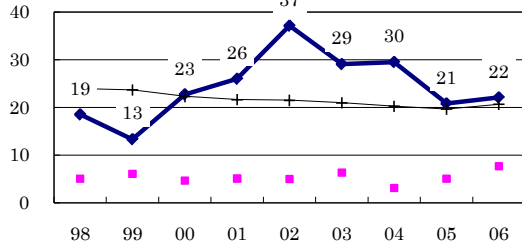
Trends of TB incidence rates



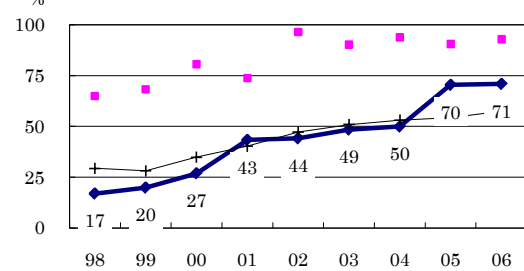
Age-sex composition of notified cases, 2006



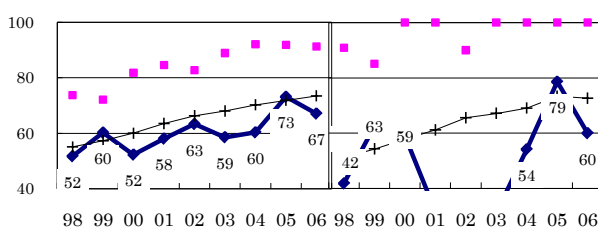
Proportion of cases with long diagnosis delay (>3M) among symptomatic pul. cases



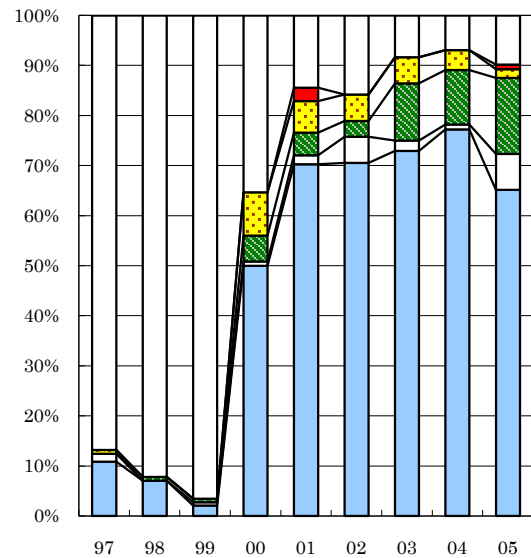
Proportion of positive or negative culture results among pulmonary cases



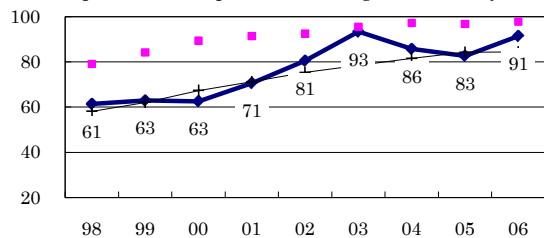
Proportion of bacillary cases among pulmonary cases



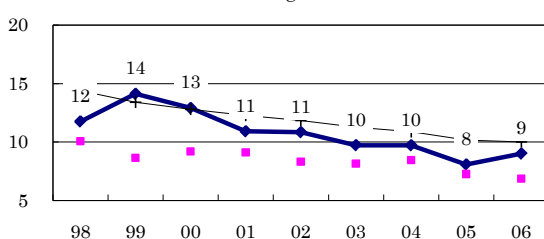
Treatment outcomes of new sputum smear-positive cases, 1997-2005 cohorts



Proportion of treatment with HRZ-E/S among new sputum smear-positive cases aged under 80 yrs



Estimated average treatment duration



Completed Others Died Failed Defaulted Unknown

	n=	129	128	145	116	111	95	96	101	112
Completed	11	7	2	50	70	71	73	77	77	65
Others	2	0	1	1	2	5	2	1	7	7
Died	0	1	1	5	5	3	11	11	15	15
Failed	1	0	0	9	6	5	5	4	2	2
Defaulted	0	0	0	0	3	0	0	0	1	1
Unknown	87	92	97	35	14	16	8	7	10	10