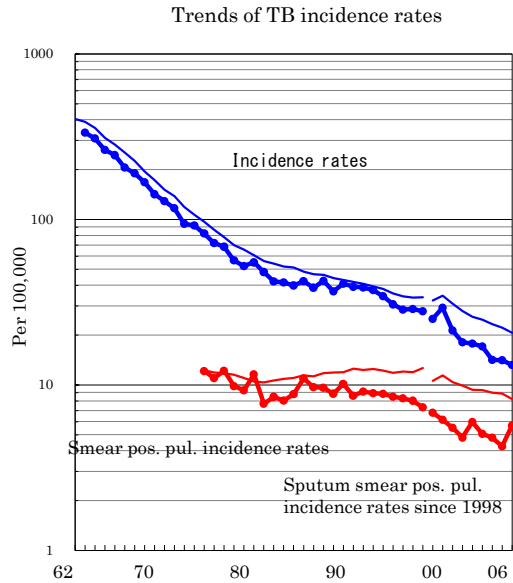
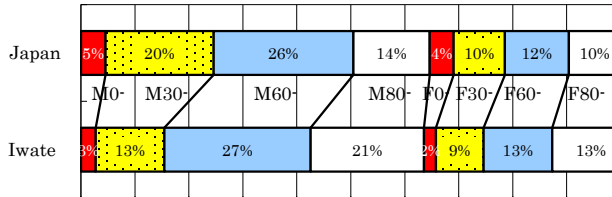


# Iwate

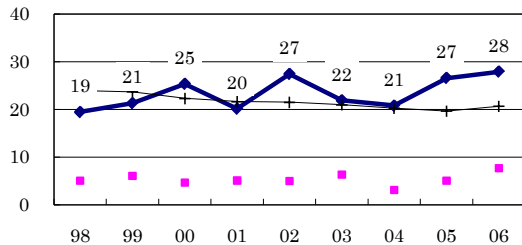
TB statistics in 2006		
Population	1,374,838	Iwate (Japan)
Foreigners' TB	2	1.1% (3.5%)
Estimated homeless TB among male cases aged 30-59 yrs	0	0.0% (8.9%)

Trends	02	03	04	05	06
Notified cases	250	239	197	195	181
Rate per 100,000	17.8	17.1	14.1	14.1	13.2
Sputum smear pos. pul. cases	84	71	67	59	78
Rate per 100,000	6.0	5.1	4.8	4.3	5.7

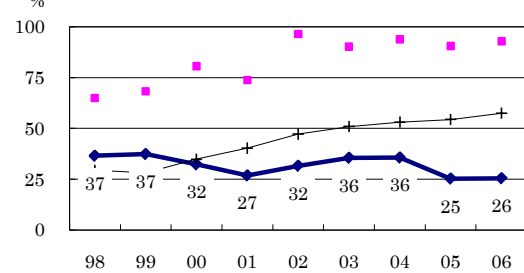
Age-sex composition of notified cases, 2006



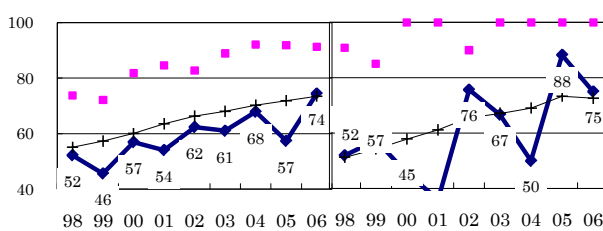
Proportion of cases with long diagnosis delay (>3M) among symptomatic pul. cases



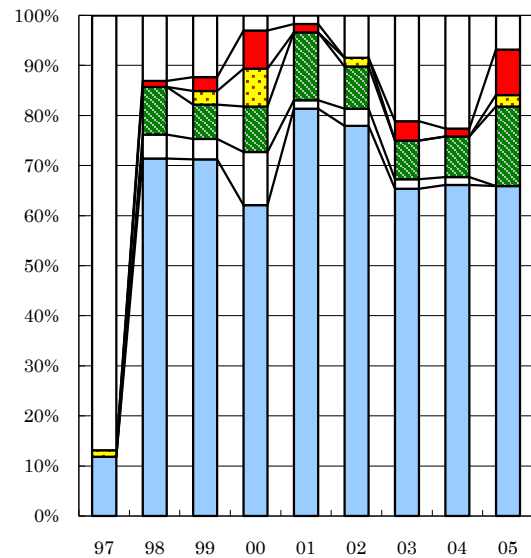
Proportion of positive or negative culture results among pulmonary cases



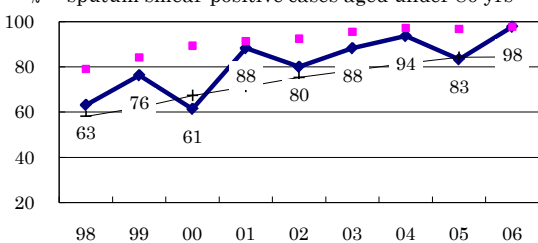
Proportion of bacillary cases among pulmonary cases



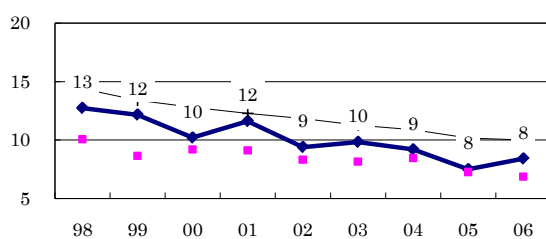
Treatment outcomes of new sputum smear-positive cases, 1997-2005 cohorts



Proportion of treatment with HRZ-E/S among new sputum smear-positive cases aged under 80 yrs



Estimated average treatment duration



Completed Others Died Failed Defaulted Unknown

	n=	76	84	73	66	59	59	52	62	44
Completed	12	71	71	62	81	78	65	66	66	66
Others	0	5	4	11	2	3	2	2	0	0
Died	0	10	7	9	14	8	8	8	16	16
Failed	1	0	3	8	0	2	0	0	2	2
Defaulted	0	1	3	8	2	0	4	2	9	9
Unknown	87	13	12	3	2	8	21	23	7	7