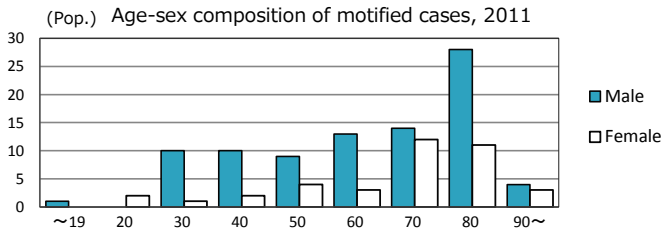
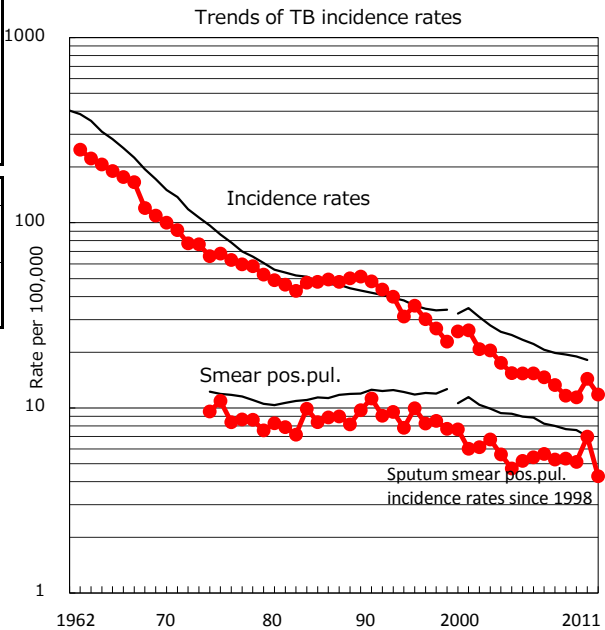
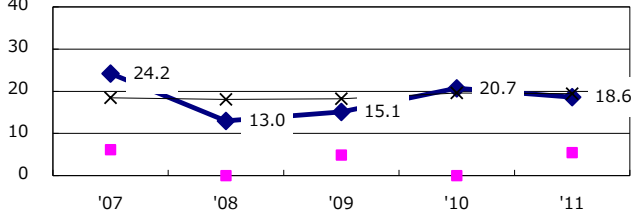


TB statistics in 2011		
Population	1,074,858	(Japan)
Foreign borns	0	0.0% (4.1%)
TB patients with homeless history	0	0.0% (1.4%)
Jobless TB patients getting public assistance, proportion among male TB patients aged 35-59 yrs	2	6.9% (10.6%)

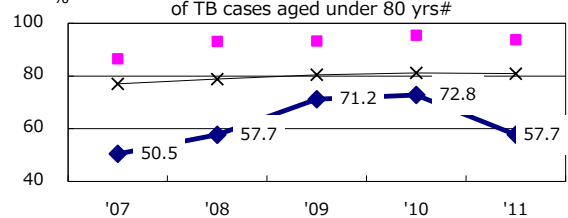
Trends	'07	'08	'09	'10	'11
Notified cases	149	129	125	156	127
Rate per 100,000	13.3	11.6	11.4	14.4	11.8
Sputum smear pos. pul. cases	59	59	56	76	46
Rate per 100,000	5.3	5.3	5.1	7.0	4.3



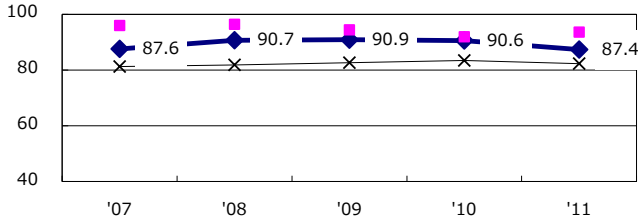
Proportion of cases with long case finding delay (>3M) among symptomatic pul. TB †



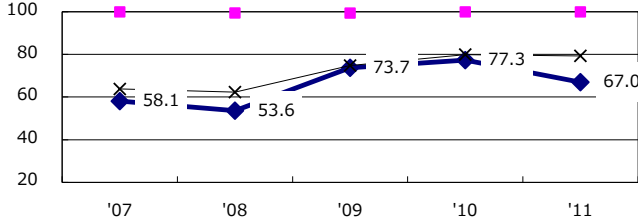
Proportion of Tx with HRZ-E/S among all forms of TB cases aged under 80 yrs#



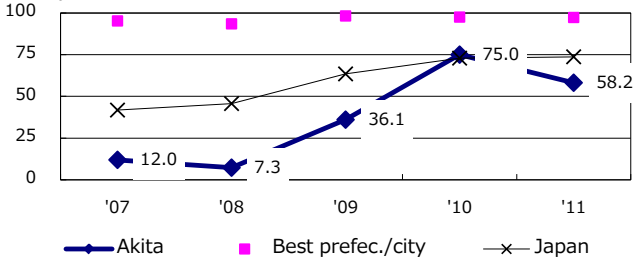
Proportion of bacillary cases among pul. TB



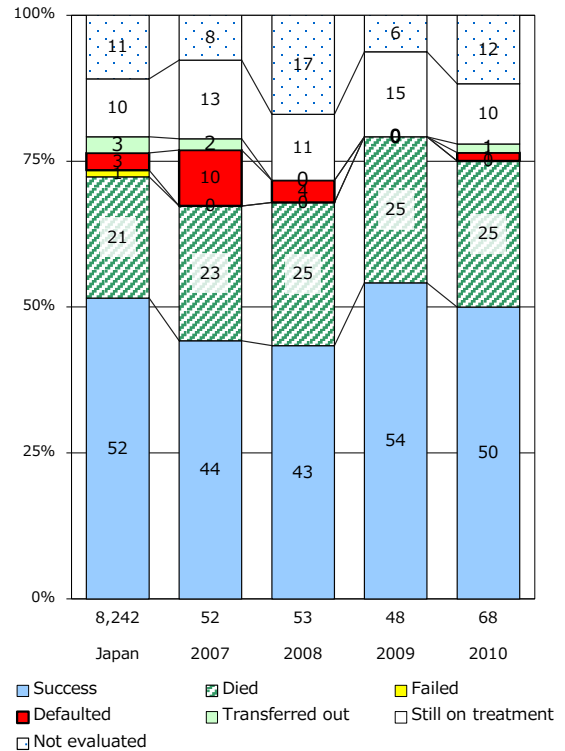
Proportion of culture results obtained among pul. TB



Proportion of DST results obtained among culture pos.



Treatment outcomes of new sputum smear-pos. cases registered in 2007-2010



	'07	'08	'09	'10	'11	Year of registration	'07	'08	'09	'10	Japan
† Excluding unknown delay(%)	15.1	28.0	32.1	42.0	35.8	Median days of treatment (all forms)	280	285	289	277	(272)
#Excluding unknown Tx(%)	2.8	4.9	4.3	4.7	12.3	Median days of hospitalization (pul.TB)	78	68	73	73	(65)