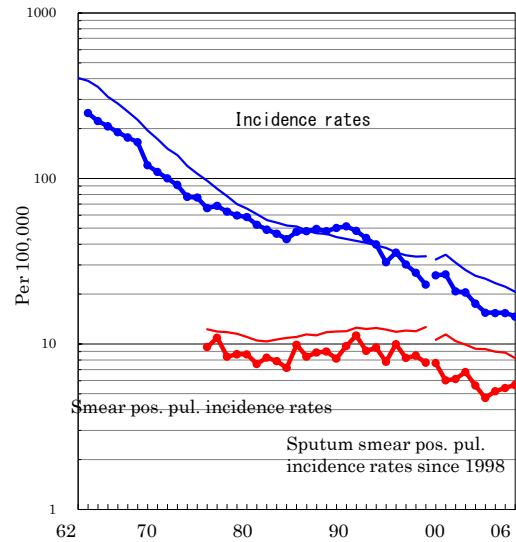


# Akita

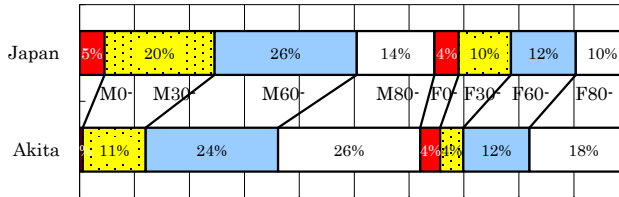
TB statistics in 2006		
Population	1,133,794	Akita (Japan)
Foreigners' TB	3	1.8% (3.5%)
Estimated homeless TB among male cases aged 30-59 yrs	0	0.0% (8.9%)

Trends	02	03	04	05	06
Notified cases	206	180	178	176	166
Rate per 100,000	17.5	15.4	15.4	15.4	14.6
Sputum smear pos. pul. cases	66	55	60	62	64
Rate per 100,000	5.6	4.7	5.2	5.4	5.6

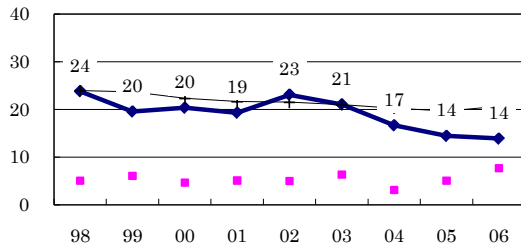
Trends of TB incidence rates



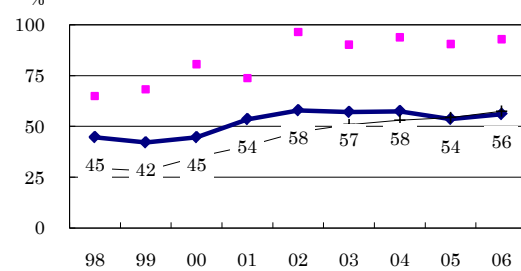
Age-sex composition of notified cases, 2006



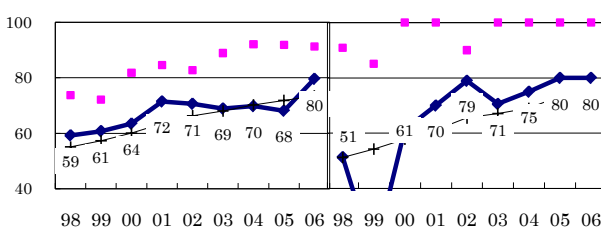
Proportion of cases with long diagnosis delay (>3M) among symptomatic pul. cases



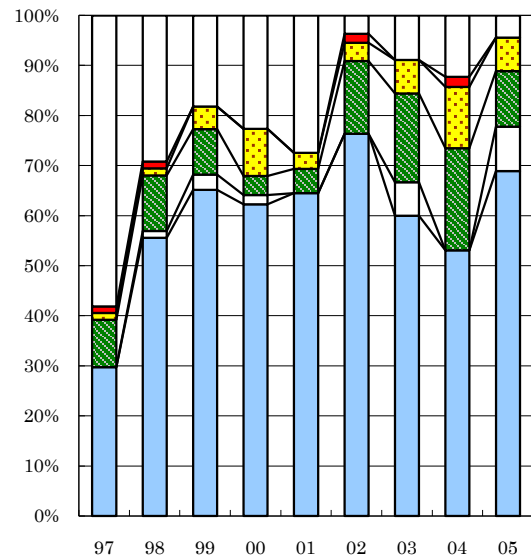
Proportion of positive or negative culture results among pulmonary cases



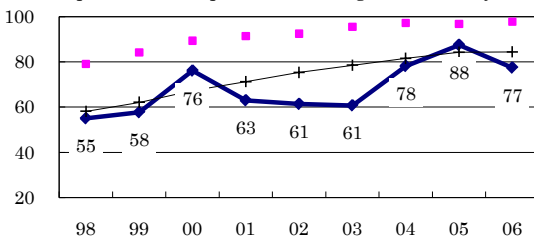
Proportion of bacillary cases among pulmonary cases



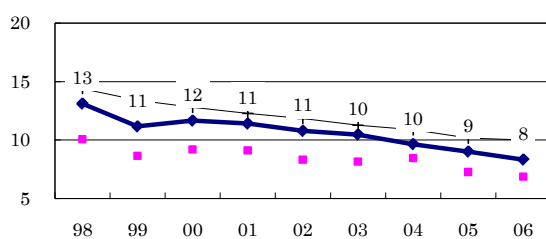
Treatment outcomes of new sputum smear-positive cases, 1997-2005 cohorts



Proportion of treatment with HRZ-E/S among new sputum smear-positive cases aged under 80 yrs



Estimated average treatment duration



Completed Others Died Failed Defaulted Unknown

n=	74	72	66	53	62	55	45	49	45
Completed	30	56	65	62	65	76	60	53	69
Others	0	1	3	2	0	0	7	0	9
Died	9	11	9	4	5	15	18	20	11
Failed	1	1	5	9	3	4	7	12	7
Defaulted	1	1	0	0	0	2	0	2	0
Unknown	58	29	18	23	27	4	9	12	4