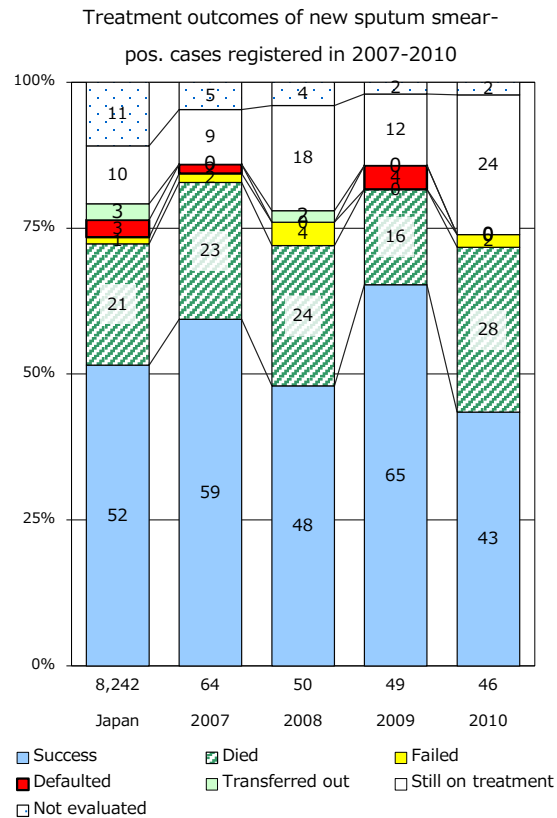
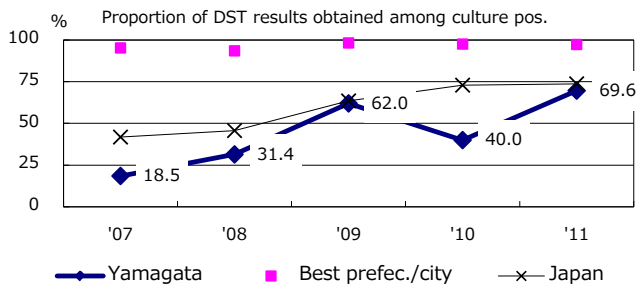
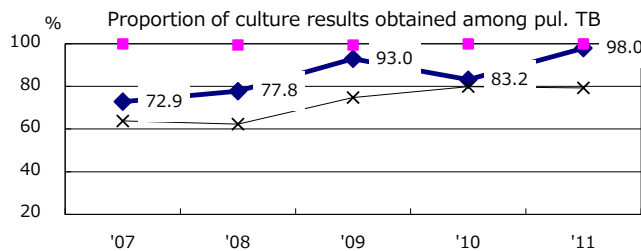
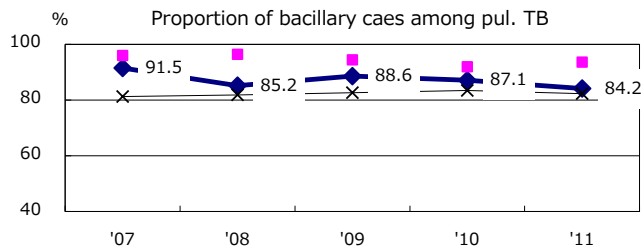
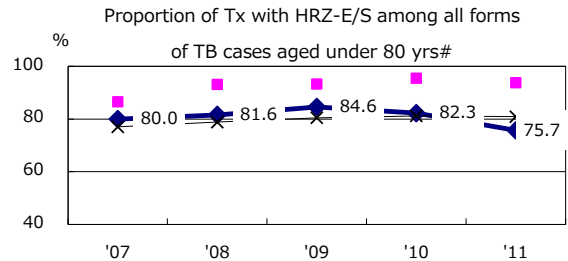
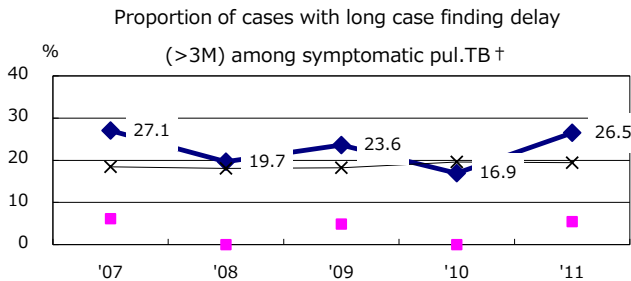
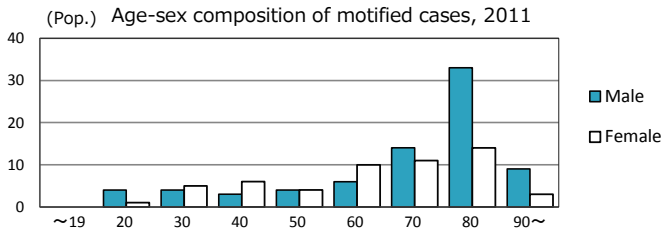
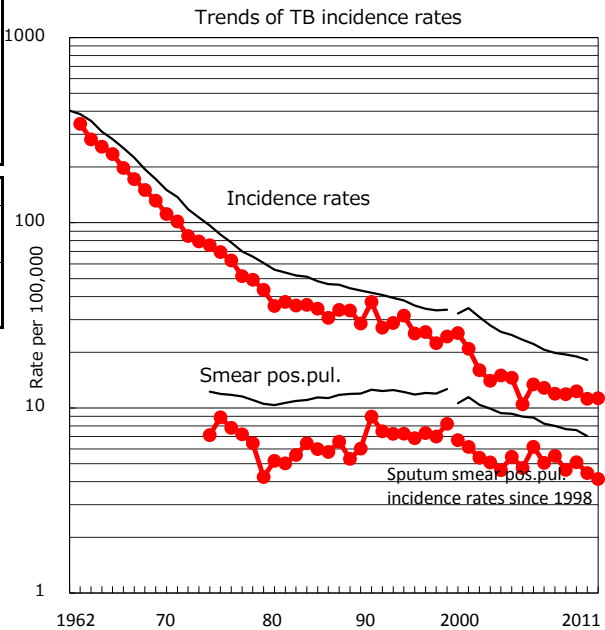


TB statistics in 2011		
Population	1,161,214	(Japan)
Foreign borns	3	2.3% (4.1%)
TB patients with homeless history	1	0.8% (1.4%)
Jobless TB patients getting public assistance, proportion among male TB patients aged 35-59 yrs	0	0.0% (10.6%)

Trends	'07	'08	'09	'10	'11
Notified cases	143	141	145	131	131
Rate per 100,000	11.9	11.9	12.3	11.2	11.3
Sputum smear pos. pul. cases	66	55	60	52	48
Rate per 100,000	5.5	4.6	5.1	4.4	4.1



	'07	'08	'09	'10	'11	Year of registration	'07	'08	'09	'10	Japan
† Excluding unknown delay(%)	13.3	26.5	15.3	25.3	25.8	Median days of treatment (all forms)	278	275	276	278	(272)
# Excluding unknown Tx(%)	5.6	5.4	1.3	8.8	2.8	Median days of hospitalization (pul. TB)	96	134	153	123	(65)