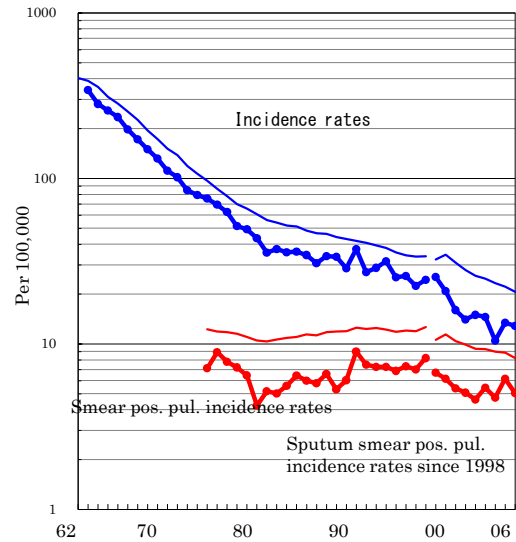


Yamagata

TB statistics in 2006		
Population	1,207,501	Yamagata (Japan)
Foreigners' TB	4	2.6% (3.5%)
Estimated homeless TB among male cases aged 30-59 yrs	0	0.0% (8.9%)

Trends	02	03	04	05	06
Notified cases	185	179	128	163	155
Rate per 100,000	15.0	14.6	10.5	13.4	12.8
Sputum smear pos. pul. cases	57	67	58	75	61
Rate per 100,000	4.6	5.4	4.7	6.2	5.1

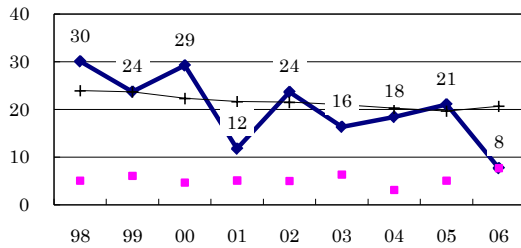
Trends of TB incidence rates



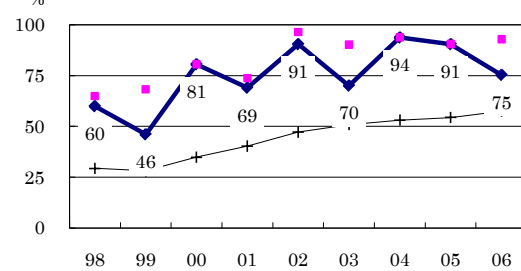
Age-sex composition of notified cases, 2006

	M10-	M30-	M60-	M80-	F0-30-	F60-	F80-
Japan	5%	20%	26%	14%	4%	10%	12%
Yamagata	9%	7%	19%	35%	9%	12%	11%

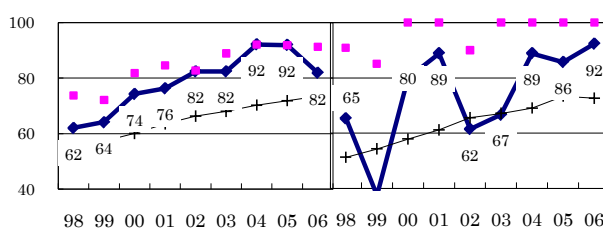
Proportion of cases with long diagnosis delay (>3M) among symptomatic pul. cases



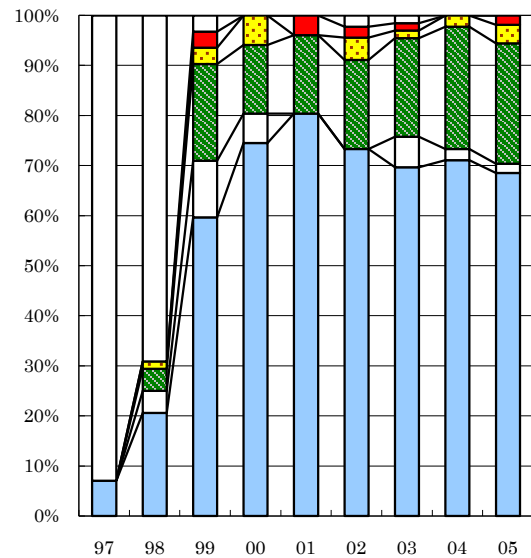
Proportion of positive or negative culture results among pulmonary cases



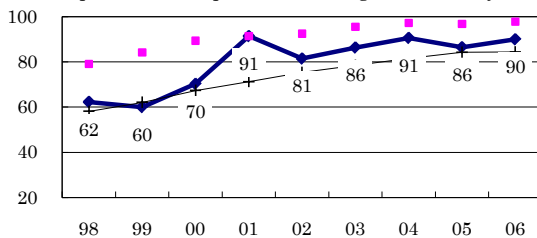
Proportion of bacillary cases among pulmonary cases



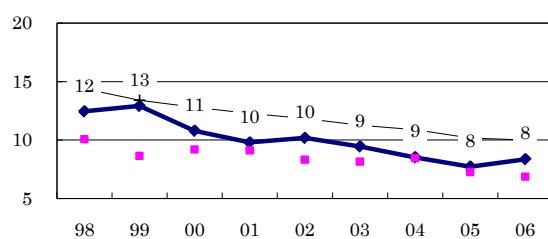
Treatment outcomes of new sputum smear-positive cases, 1997-2005 cohorts



Proportion of treatment with HRZ-E/S among new sputum smear-positive cases aged under 80 yrs



Estimated average treatment duration



Completed Others Died Failed Defaulted Unknown

n=	71	68	62	51	51	45	66	45	54
Completed	7	21	60	75	80	73	70	71	69
Others	0	4	11	6	0	0	6	2	2
Died	0	4	19	14	16	18	20	24	24
Failed	0	1	3	6	0	4	2	2	4
Defaulted	0	0	3	0	4	2	2	0	2
Unknown	93	69	3	0	0	2	2	0	0

—◆— Yamagata —■— Best prefecture/city —+— Japan