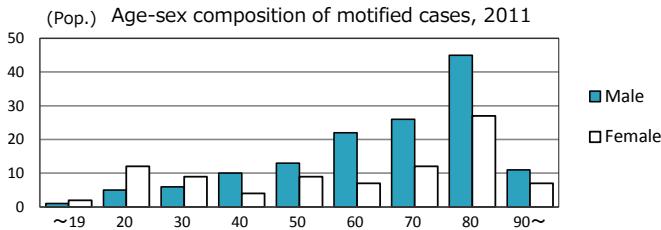
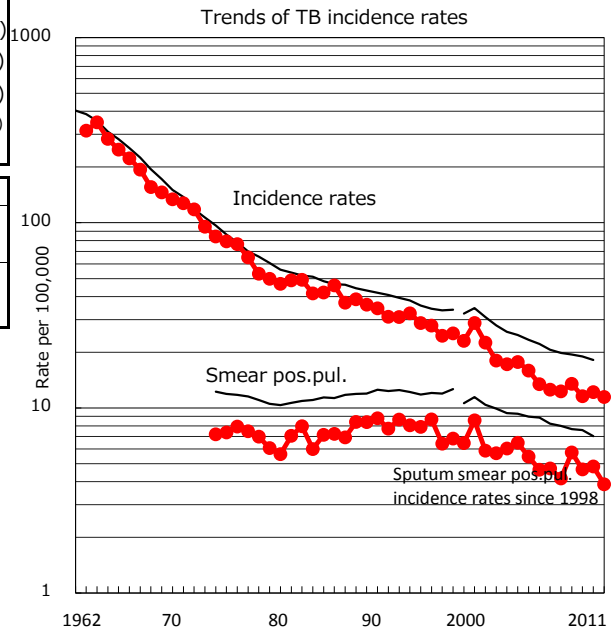
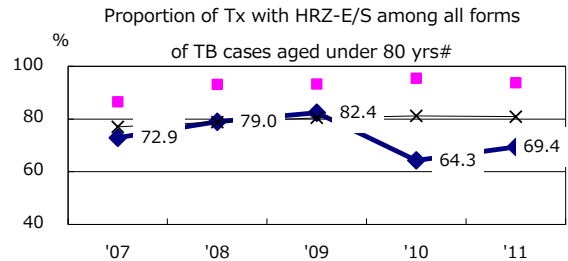
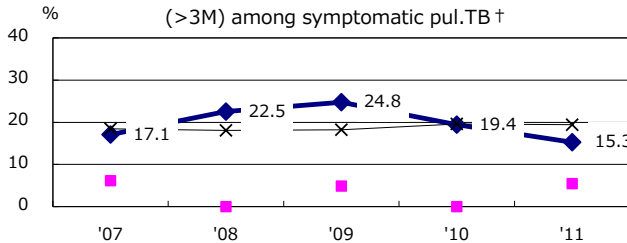


TB statistics in 2011		
Population	1,989,834	(Japan)
Foreign borns	1	0.4% (4.1%)
TB patients with homeless history	0	0.0% (1.4%)
Jobless TB patients getting public assistance, proportion among male TB patients aged 35-59 yrs	2	6.9% (10.6%)

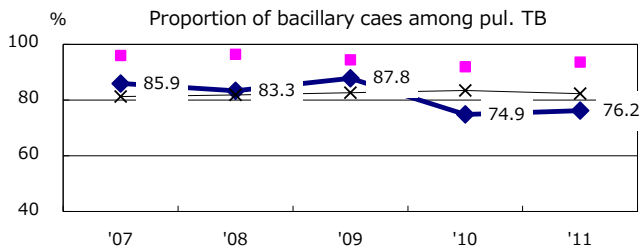
Trends	'07	'08	'09	'10	'11
Notified cases	254	277	236	247	228
Rate per 100,000	12.3	13.5	11.6	12.2	11.5
Sputum smear pos. pul. cases	86	118	95	98	77
Rate per 100,000	4.2	5.7	4.7	4.8	3.9



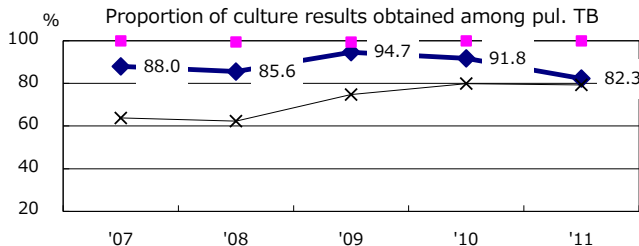
Proportion of cases with long case finding delay (>3M) among symptomatic pul. TB †



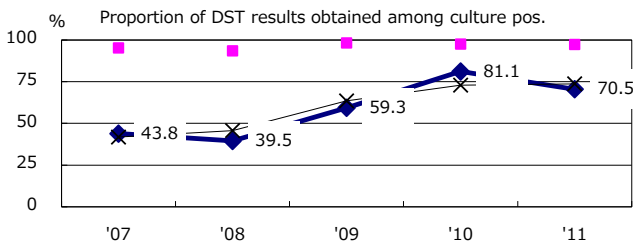
Proportion of bacillary caes among pul. TB



Proportion of culture results obtained among pul. TB

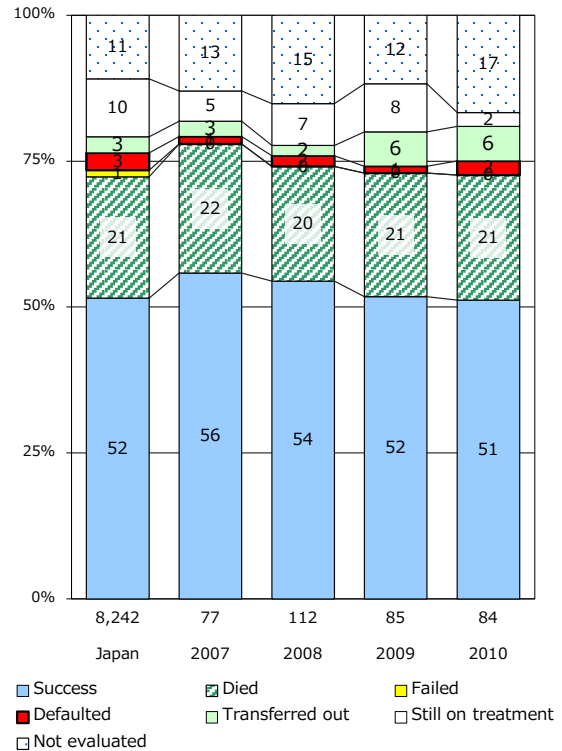


Proportion of DST results obtained among culture pos.



—◆— Fukushima ■ Best prefec./city —×— Japan

Treatment outcomes of new sputum smear-pos. cases registered in 2007-2010



	'07	'08	'09	'10	'11	Year of registration	'07	'08	'09	'10	Japan
† Excluding unknown delay(%)	18.2	16.0	28.3	34.5	47.8	Median days of treatment (all forms)	268	267	276	272	(272)
#Excluding unknown Tx(%)	5.1	6.9	2.4	1.3	2.9	Median days of hospitalization (pul.TB)	85	89	95	75	(65)