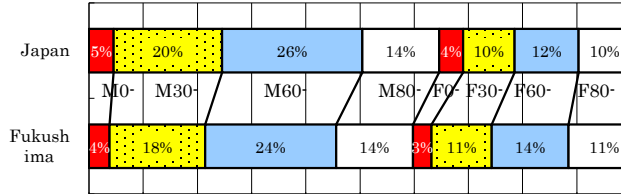


Fukushima

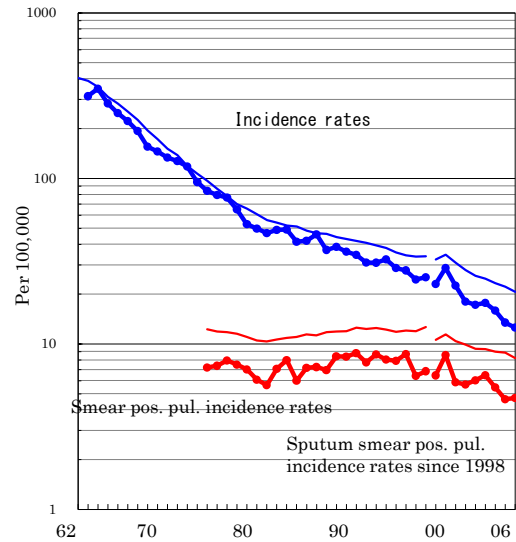
TB statistics in 2006		
Population	2,079,808	Fukushima (Japan)
Foreigners' TB	10	3.8% (3.5%)
Estimated homeless TB among male cases aged 30-59 yrs	4	8.7% (8.9%)

Trends	02	03	04	05	06
Notified cases	365	374	335	281	261
Rate per 100,000	17.2	17.7	15.9	13.4	12.5
Sputum smear pos. pul. cases	128	137	115	97	98
Rate per 100,000	6.0	6.5	5.5	4.6	4.7

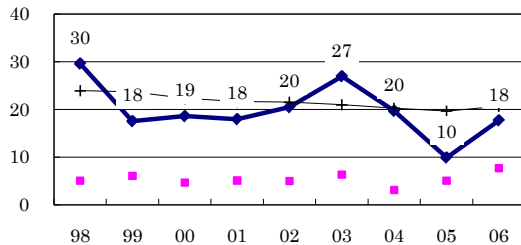
Age-sex composition of notified cases, 2006



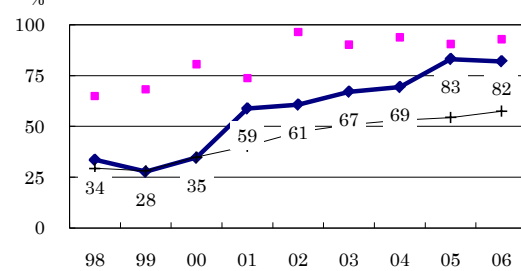
Trends of TB incidence rates



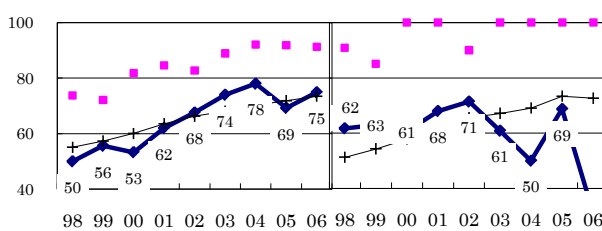
Proportion of cases with long diagnosis delay (>3M) among symptomatic pul. cases



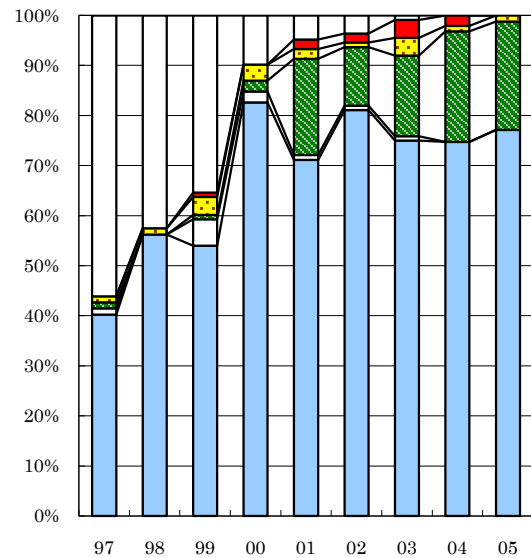
Proportion of positive or negative culture results among pulmonary cases



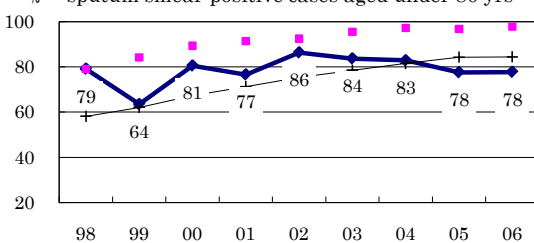
Proportion of bacillary cases among pulmonary cases



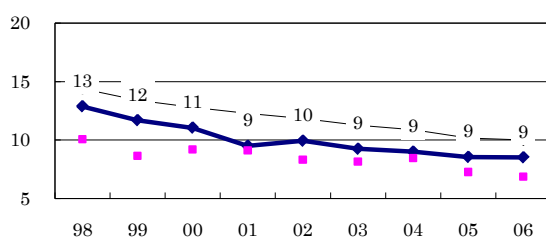
Treatment outcomes of new sputum smear-positive cases, 1997-2005 cohorts



Proportion of treatment with HRZ-E/S among new sputum smear-positive cases aged under 80 yrs



Estimated average treatment duration



Legend for Treatment outcomes: Completed, Others, Died, Failed, Defaulted, Unknown

	n=	82	80	113	92	104	111	112	95	83
Completed	40	56	54	83	71	81	75	75	77	77
Others	1	0	5	2	1	1	1	0	0	0
Died	1	0	1	2	19	12	16	22	22	22
Failed	1	1	4	3	2	1	4	1	1	1
Defaulted	0	0	1	0	2	2	4	2	0	0
Unknown	56	43	35	10	5	4	1	0	0	0