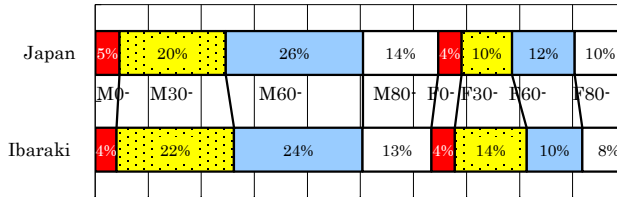


# Ibaraki

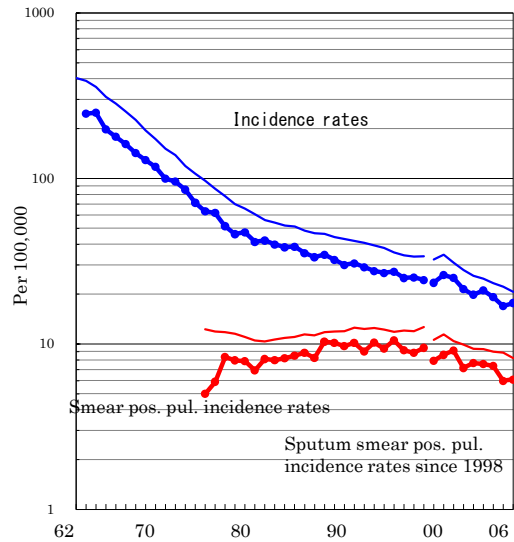
TB statistics in 2006		
Population	2,971,716	Ibaraki (Japan)
Foreigners' TB	25	4.8% (3.5%)
Estimated homeless TB among male cases aged 30-59 yrs	5	4.3% (8.9%)

Trends	02	03	04	05	06
Notified cases	592	629	572	503	524
Rate per 100,000	19.8	21.0	19.1	16.9	17.6
Sputum smear pos. pul. cases	229	226	220	178	181
Rate per 100,000	7.7	7.6	7.4	6.0	6.1

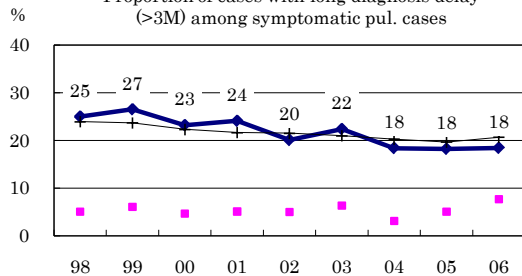
Age-sex composition of notified cases, 2006



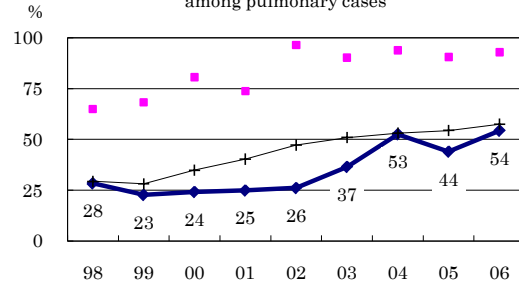
Trends of TB incidence rates



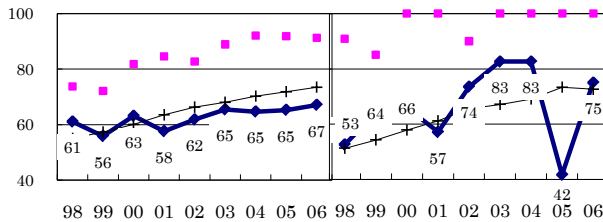
Proportion of cases with long diagnosis delay (>3M) among symptomatic pul. cases



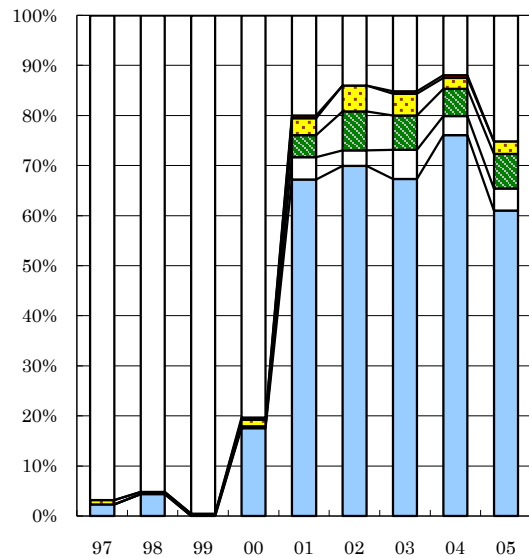
Proportion of positive or negative culture results among pulmonary cases



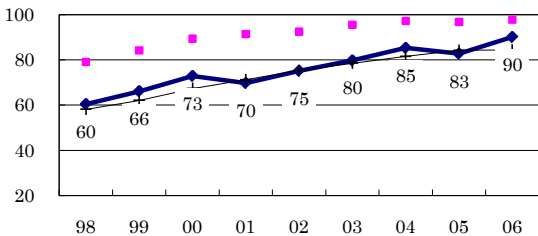
Proportion of bacillary cases among pulmonary cases



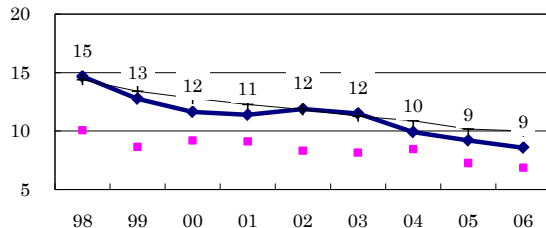
Treatment outcomes of new sputum smear-positive cases, 1997-2005 cohorts



Proportion of treatment with HRZ-E/S among new sputum smear-positive cases aged under 80 yrs



Estimated average treatment duration



Completed Others Died Failed Defaulted Unknown

	n= 219	207	223	234	180	193	205	184	159
Completed	2	4	0	18	67	70	67	76	61
Others	0	0	0	0	4	3	6	4	4
Died	0	0	0	0	4	8	7	5	7
Failed	1	0	0	1	3	5	4	2	3
Defaulted	0	0	0	0	1	0	0	1	0
Unknown	97	95	100	80	20	14	15	12	25