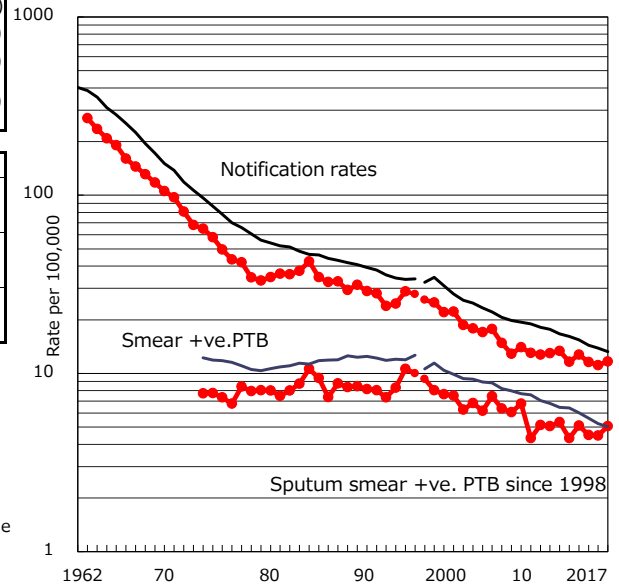


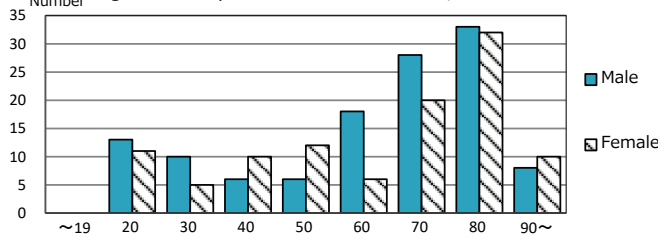
TB statistics in 2017 (Population in Tochigi 1,956,910)	
Among newly notified : (Japan)	
Foreign borns	28 12.3% (9.1%)
TB cases with homeless history	0 0.0% (0.9%)
Male aged 35-59, without job and receiving public assistance	0 0.0% (7.3%)

Trends	'13	'14	'15	'16	2017
Notified cases	231	252	229	218	228
Rate per 100,000 population	11.6	12.7	11.6	11.1	11.7
Sputum smear +ve. PTB	86	101	89	88	99
Rate per 100,000 population	4.3	5.1	4.5	4.5	5.1
Latent Tuberculosis Infection	73	76	51	75	50
Rate per 100,000 population	3.7	3.8	2.6	3.8	2.6

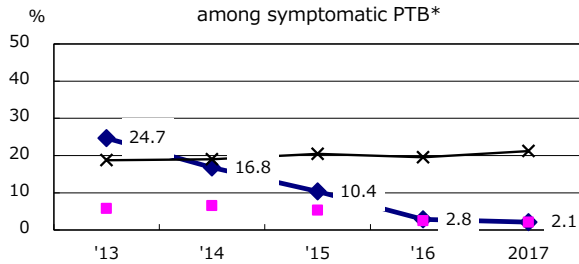
Trends of TB notification rates, all forms and smear +ve.PTB



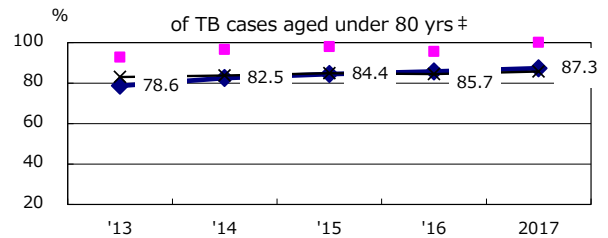
Age-sex composition of notified cases, 2017



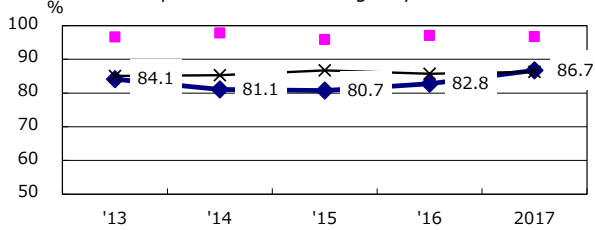
Proportion of cases with total diagnosis delay(> 3 mths) among symptomatic PTB*



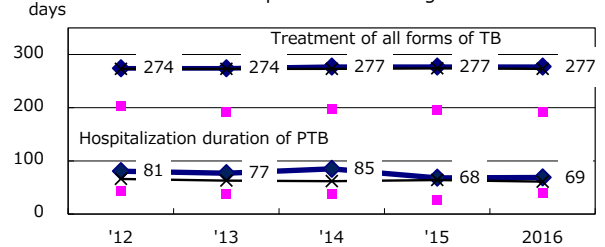
Proportion of TX with HRZ-E/S among all forms of TB cases aged under 80 yrs †



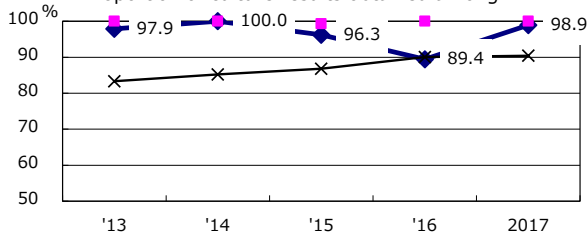
Proportion of Bacteriologically +ve. PTB



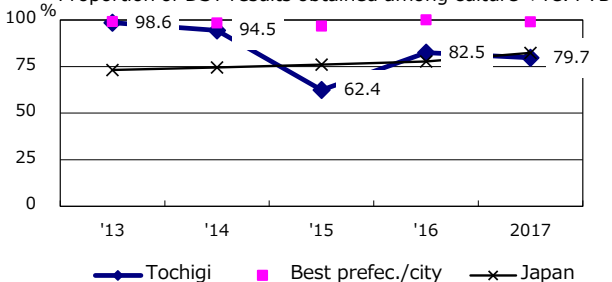
Median duration of treatment of all forms and hospitalization among PTB



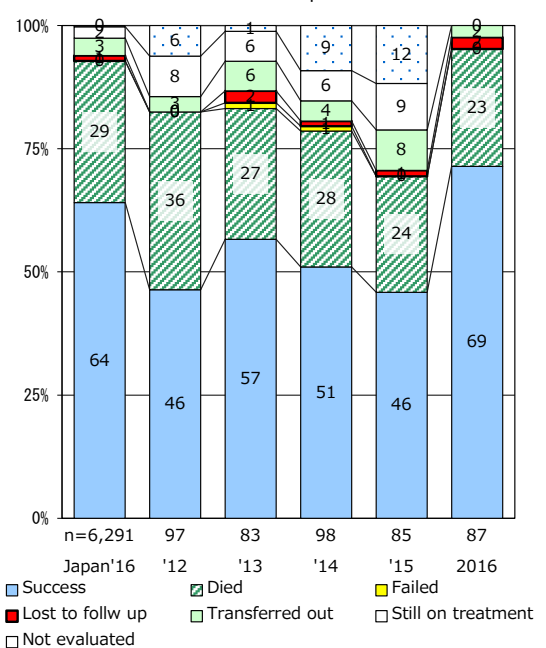
Proportion of culture results obtained among PTB



Proportion of DST results obtained among culture +ve. PTB



Treatment outcomes of new sputum smear +ve.TB



PTB : pulmonary TB

† Excluding unknown delay(%)	'13	'14	'15	'16	2017
	2.5	18.5	44.2	48.6	26.9

‡ Excluding unknown Tx(%)	'13	'14	'15	'16	2017
	1.4	3.5	2.2	0.0	2.1