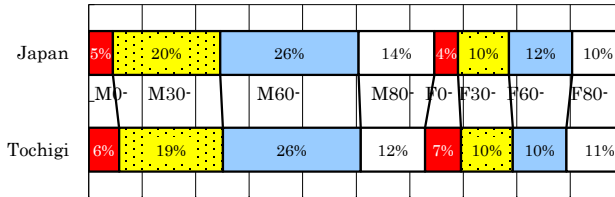


Tochigi

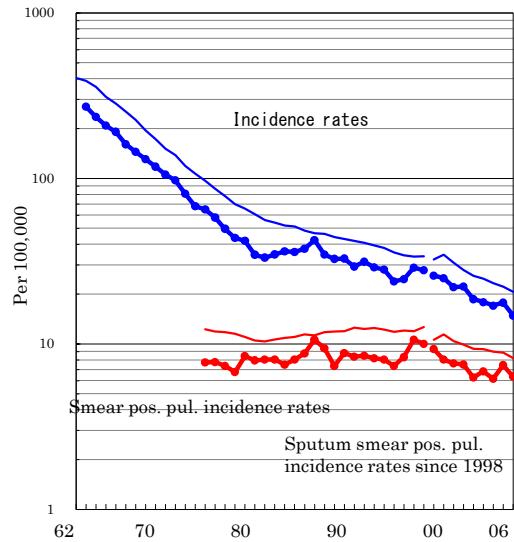
TB statistics in 2006		
Population	2,015,197	Tochigi (Japan)
Foreigners' TB	21	7.0% (3.5%)
Estimated homeless TB among male cases aged 30-59 yrs	0	0.0% (8.9%)

Trends	02	03	04	05	06
Notified cases	375	360	343	358	299
Rate per 100,000	18.7	17.9	17.0	17.8	14.8
Sputum smear pos. pul. cases	126	137	124	150	128
Rate per 100,000	6.3	6.8	6.2	7.4	6.4

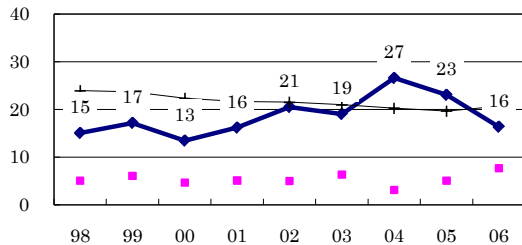
Age-sex composition of notified cases, 2006



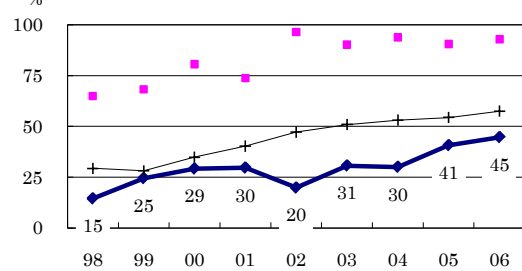
Trends of TB incidence rates



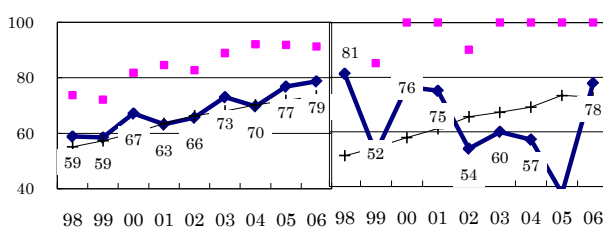
Proportion of cases with long diagnosis delay (>3M) among symptomatic pul. cases



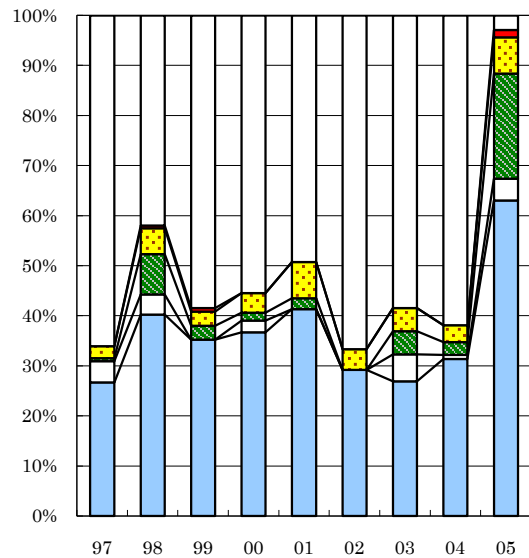
Proportion of positive or negative culture results among pulmonary cases



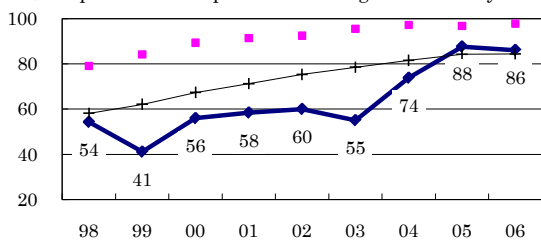
Proportion of bacillary cases among pulmonary cases



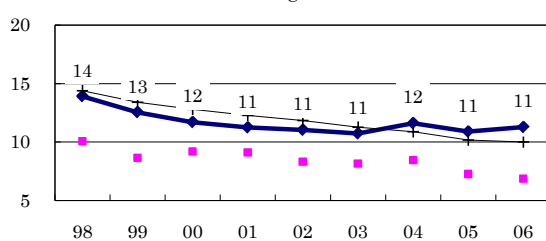
Treatment outcomes of new sputum smear-positive cases, 1997-2005 cohorts



Proportion of treatment with HRZ-E/S among new sputum smear-positive cases aged under 80 yrs



Estimated average treatment duration



	97	98	99	00	01	02	03	04	05
n=	165	174	142	128	138	120	130	118	138
Completed	27	40	35	37	41	29	27	31	63
Others	4	4	0	2	0	0	5	1	4
Died	1	8	3	2	2	0	5	3	21
Failed	2	5	3	4	7	4	5	3	7
Defaulted	0	1	1	0	0	0	0	0	1
Unknown	66	42	58	55	49	67	58	62	3

—●— Tochigi —■— Best prefecture/city —+— Japan