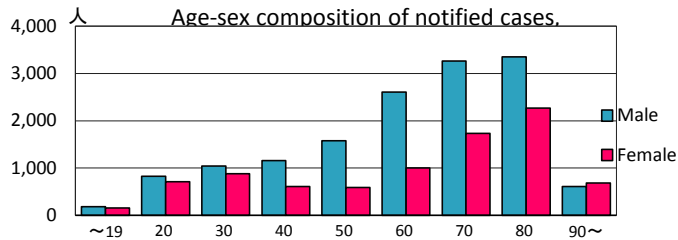
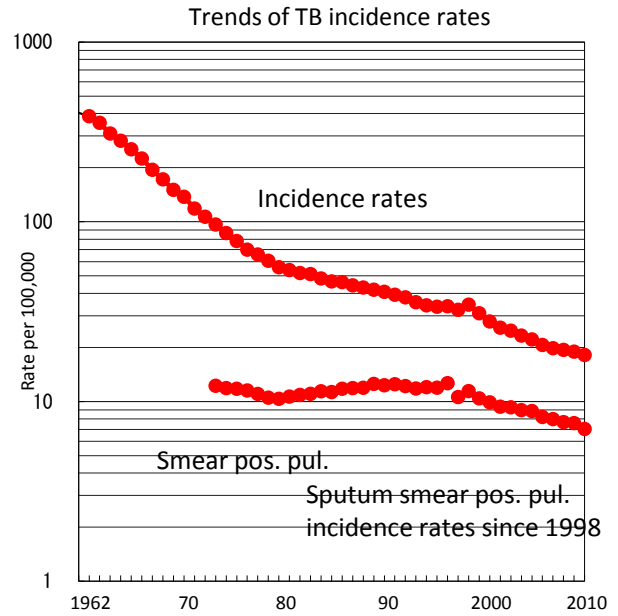
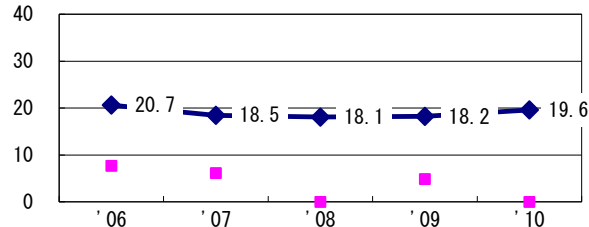


Japan

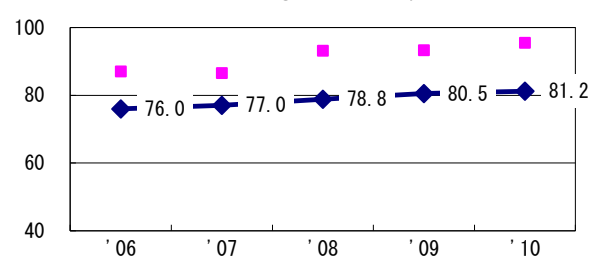
TB statistics in 2010					
Population	128,056,026				
Foreign borns	952	4.1%			
TB patients with homeless history	333	1.4%			
Jobless TB patients getting public assistance	409	10.8%			
Trends	'06	'07	'08	'09	'10
Notified cases	26,384	25,311	24,760	24,170	23,261
Rate per 100,000	20.6	19.8	19.4	19.0	18.2
Sputum smear pos. pul. cases	10,492	10,204	9,809	9,675	9,019
Rate per 100,000	8.2	8.0	7.7	7.6	7.0



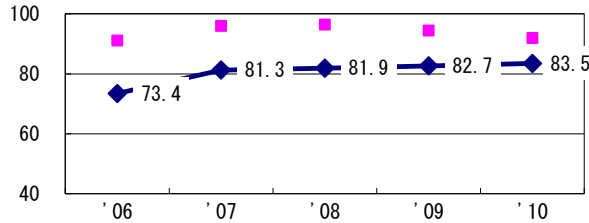
Proportion of cases with long case finding delay (>3M) among symptomatic pul. TB †



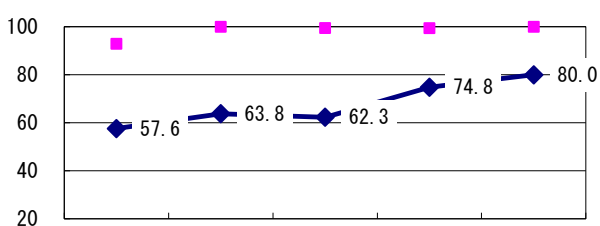
Proportion of Tx with HRZ-E/S among all forms of TB cases aged under 80 yrs ‡



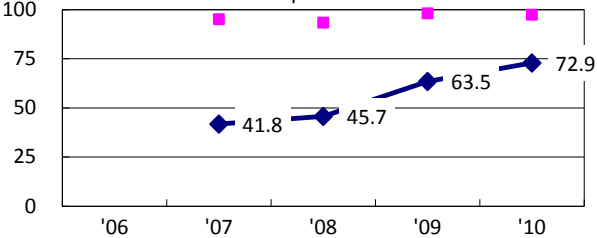
Proportion of bacillary cases among pul. TB



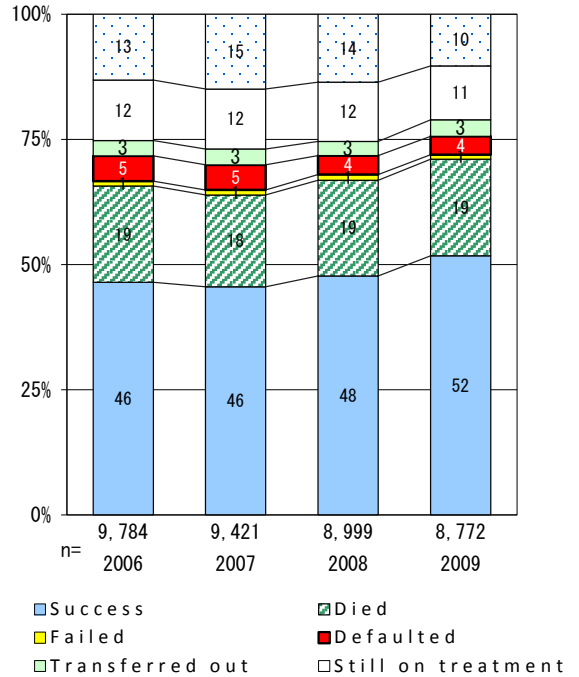
Proportion of culture results obtained among pul. TB



Proportion of DST results obtained among culture pos. pul. TB



Treatment outcomes of new sputum smear-pos. pul. cases registered in 2006-2009



	'06	'07	'08	'09	'10	Year of registration	'07	'08	'09
†Excluding unknown delay(%)	11.2	26.7	36.9	38.2	34.1	Median days of treatment (all forms)	273	272	270
‡Excluding unknown Tx (%)	7.3	5.7	5.8	4.4	2.8	Median days of hospitalization (pul.TB)	65	67	68