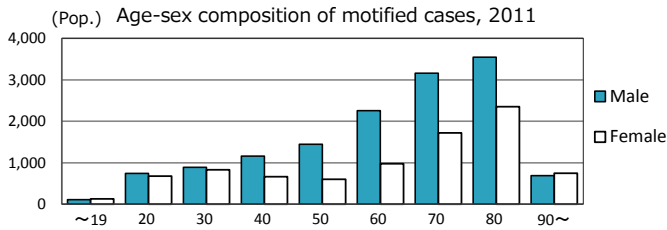
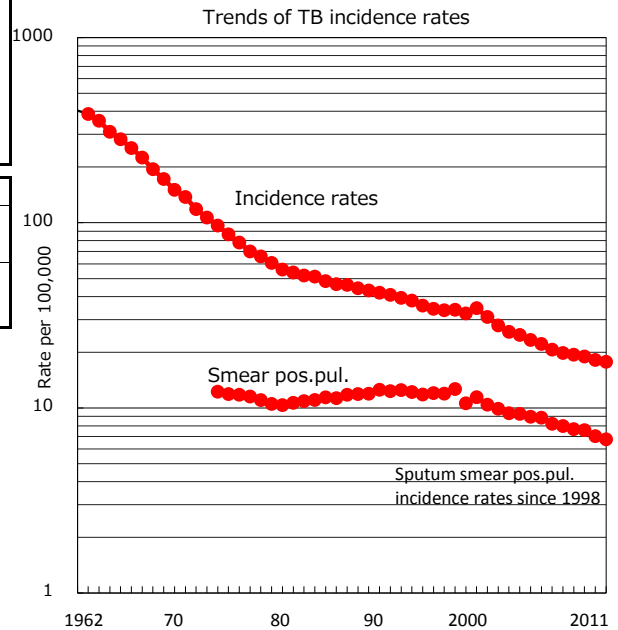
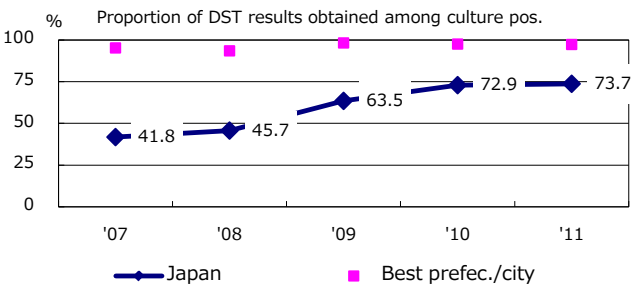
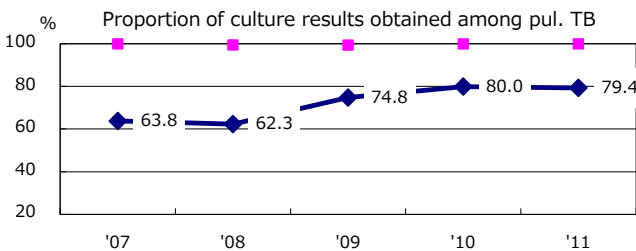
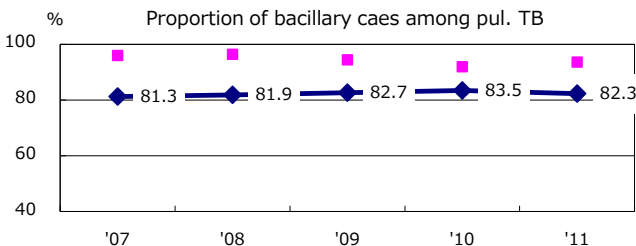
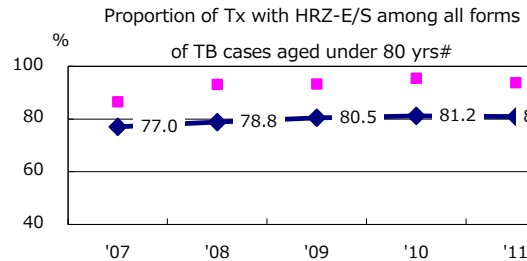
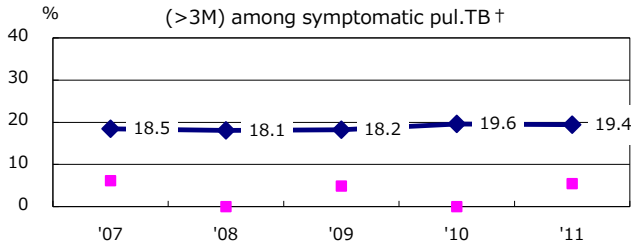


TB statistics in 2011			
Population	127,798,704		
Foreign borns	921	4.1%	
TB patients with homeless history	319	1.4%	
Jobless TB patients getting public assistance, proportion among male TB patients aged 35-59 yrs	370	10.6%	

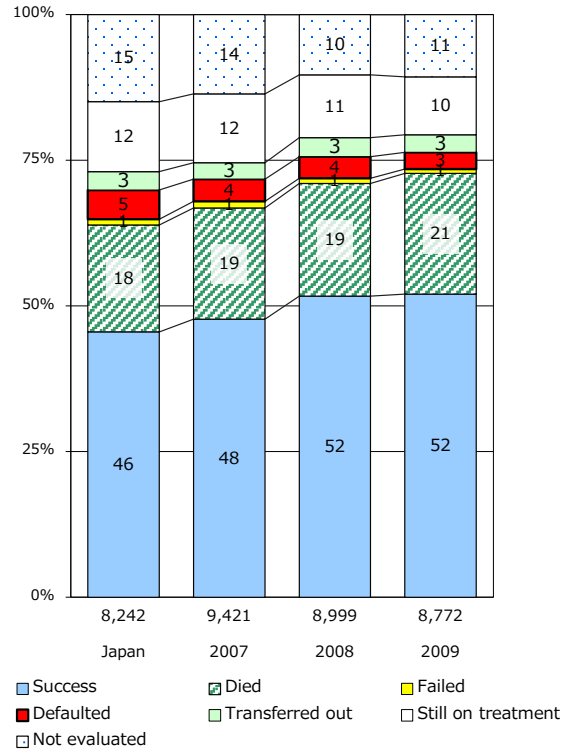
Trends	'07	'08	'09	'10	'11
Notified cases	25,311	24,760	24,170	23,261	22,681
Rate per 100,000	19.8	19.4	19.0	18.2	17.7
Sputum smear pos. pul. cases	10,204	9,809	9,675	9,019	8,654
Rate per 100,000	8.0	7.7	7.6	7.0	6.8



Proportion of cases with long case finding delay (>3M) among symptomatic pul. TB †



Treatment outcomes of new sputum smear-positive cases registered in 2007-2010



	'07	'08	'09	'10	'11	Year of registration	'07	'08	'09	'10
† Excluding unknown delay(%)	26.7	36.9	38.2	34.1	32.6	Median days of treatment (all forms)	273	272	270	272
# Excluding unknown Tx(%)	5.7	5.8	4.4	2.8	2.8	Median days of hospitalization (pul.TB)	65	67	68	65