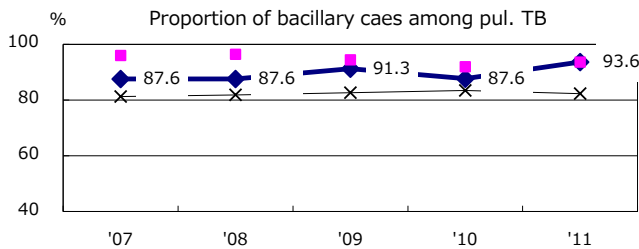
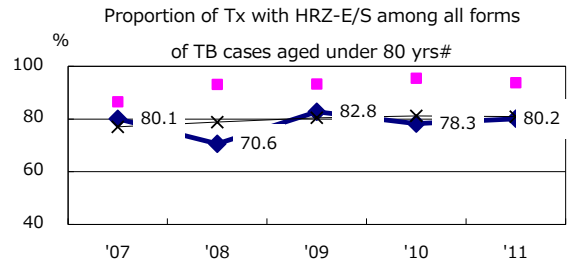
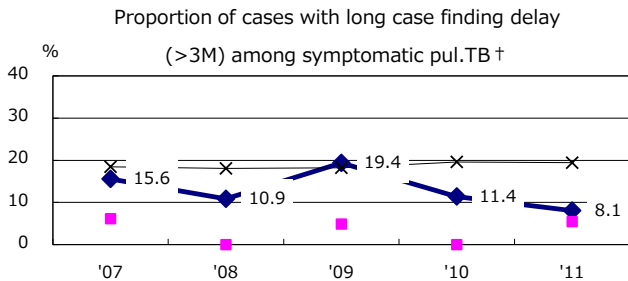
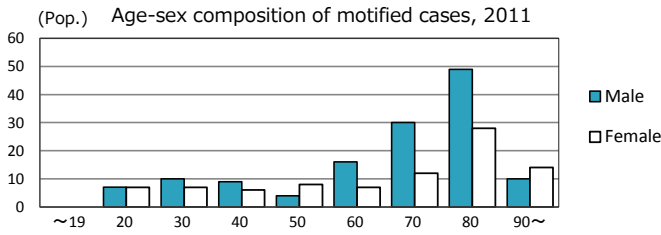
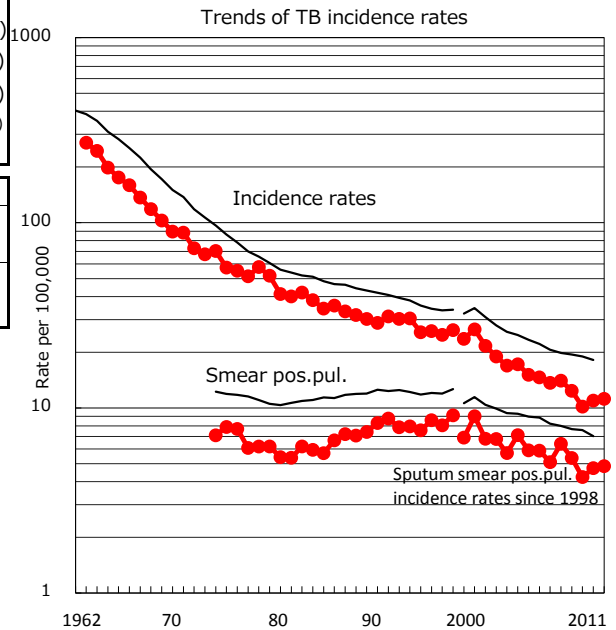
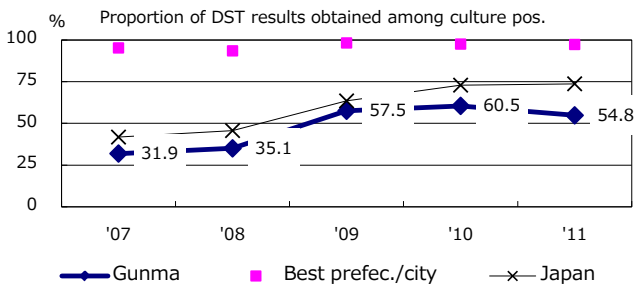
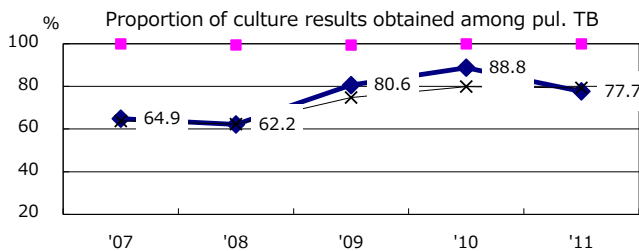
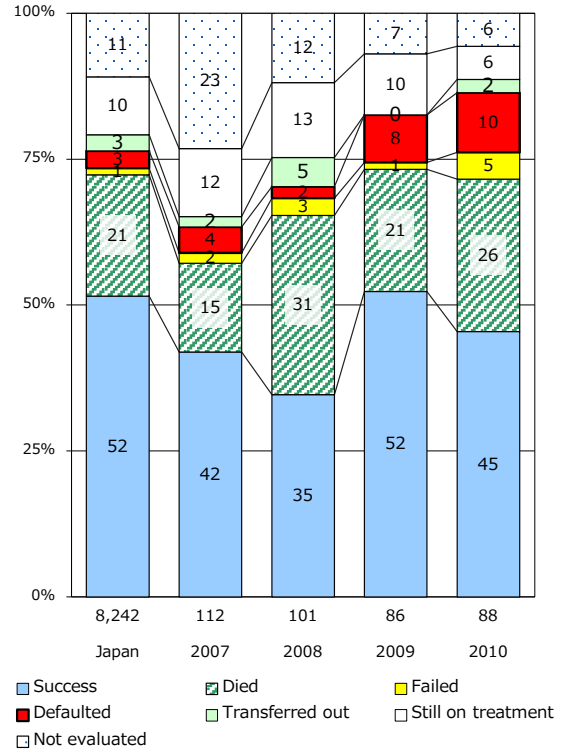


TB statistics in 2011				
Population	2,000,514			(Japan)
Foreign borns	11	4.9%	(4.1%)	
TB patients with homeless history	2	0.9%	(1.4%)	
Jobless TB patients getting public assistance, proportion among male TB patients aged 35-59 yrs	1	4.3%	(10.6%)	

Trends	'07	'08	'09	'10	'11
Notified cases	283	249	204	220	224
Rate per 100,000	14.0	12.4	10.2	11.0	11.2
Sputum smear pos. pul. cases	129	108	85	95	97
Rate per 100,000	6.4	5.4	4.2	4.7	4.8



Treatment outcomes of new sputum smear-pos. cases registered in 2007-2010



	'07	'08	'09	'10	'11	Year of registration	'07	'08	'09	'10	Japan
† Excluding unknown delay(%)	35.1	36.6	25.2	19.8	22.7	Median days of treatment (all forms)	275	282	273	269	(272)
# Excluding unknown Tx(%)	7.2	2.4	1.6	2.3	1.6	Median days of hospitalization (pul. TB)	73	82	85	99	(65)