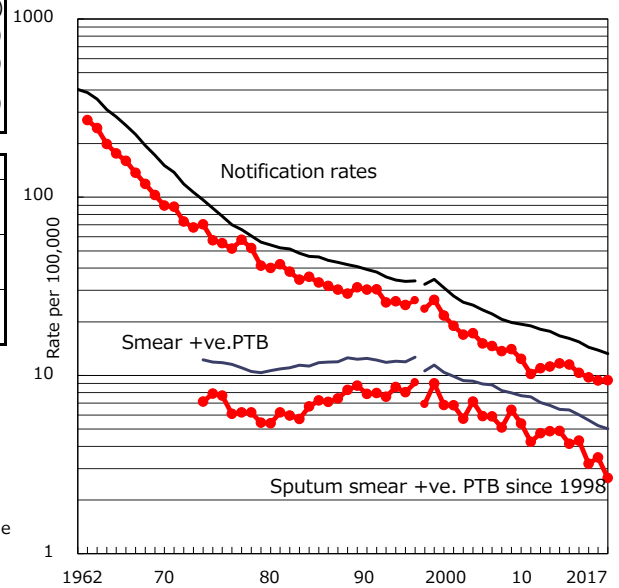


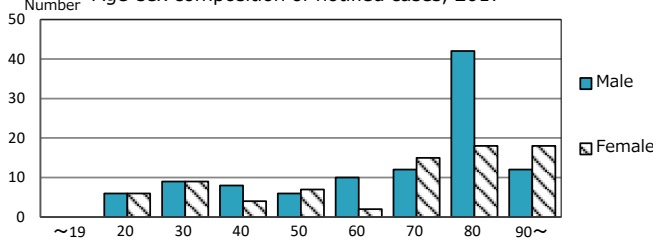
TB statistics in 2017 (Population in Gunma		1,959,831)
Among newly notified : (Japan)		
Foreign borns	31	16.8% (9.1%)
TB cases with homeless history	3	1.6% (0.9%)
Male aged 35-59, without job and receiving public assistance	1	4.3% (7.3%)

Trends	'13	'14	'15	'16	2017
Notified cases	228	204	192	183	184
Rate per 100,000 population	11.5	10.3	9.7	9.3	9.4
Sputum smear +ve. PTB	82	85	63	68	52
Rate per 100,000 population	4.1	4.3	3.2	3.5	2.7
Latent Tuberculosis Infection	56	74	79	81	81
Rate per 100,000 population	2.8	3.7	4.0	4.1	4.1

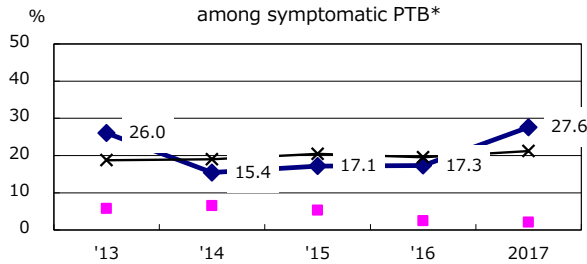
Trends of TB notification rates, all forms and smear +ve.PTB



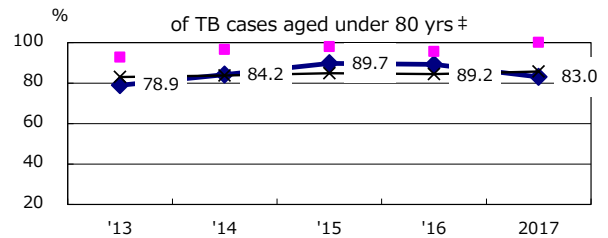
Age-sex composition of notified cases, 2017



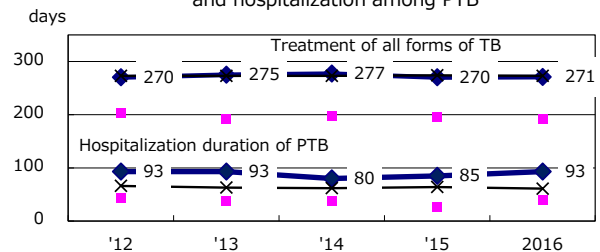
Proportion of cases with total diagnosis delay (> 3 mths) among symptomatic PTB*



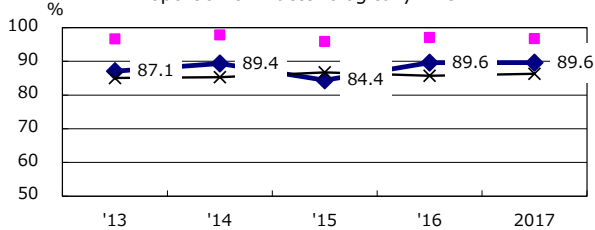
Proportion of TX with HRZ-E/S among all forms



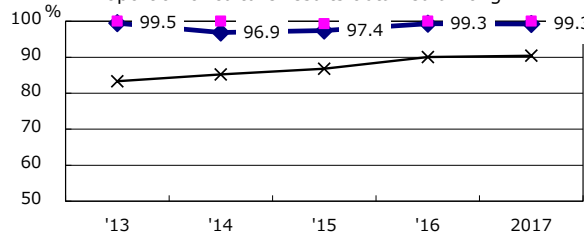
Median duration of treatment of all forms and hospitalization among PTB



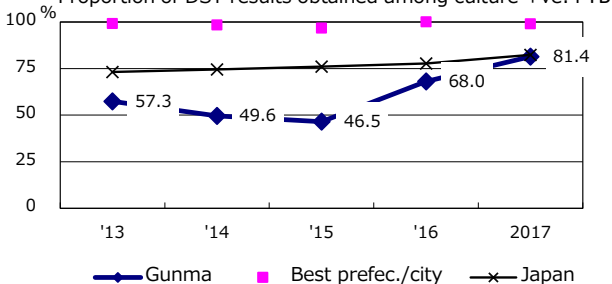
Proportion of Bacteriologically +ve. PTB



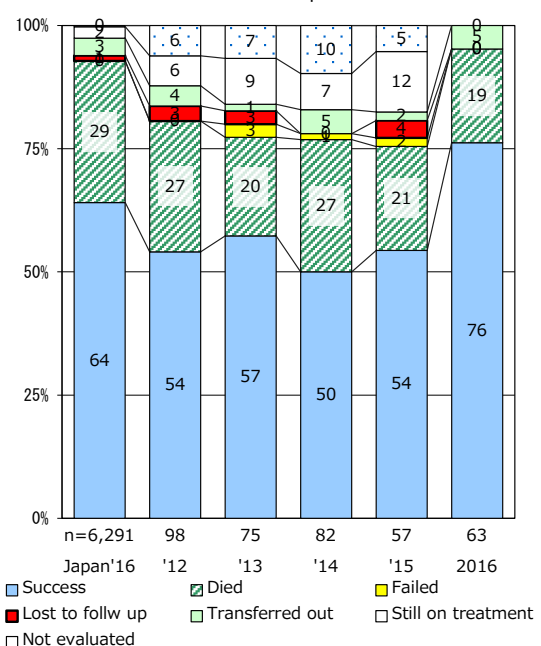
Proportion of culture results obtained among PTB



Proportion of DST results obtained among culture +ve. PTB



Treatment outcomes of new sputum smear +ve.TB



PTB : pulmonary TB

† Excluding unknown delay(%)	'13	'14	'15	'16	2017
	8.2	4.7	6.3	11.7	6.3

‡ Excluding unknown Tx(%)	'13	'14	'15	'16	2017
	3.8	2.4	2.7	4.3	0.0