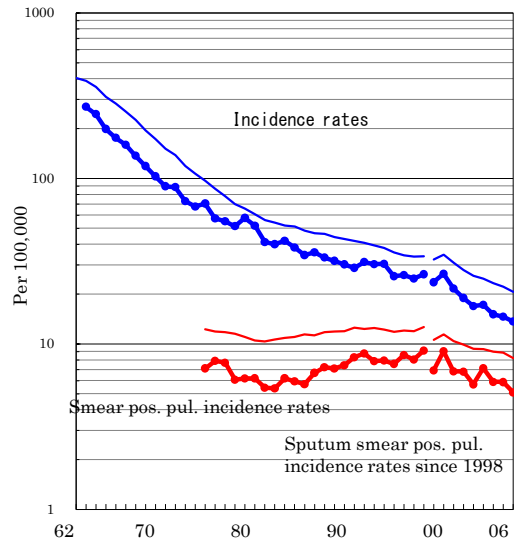


Gunma

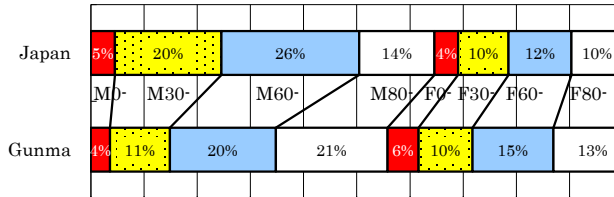
TB statistics in 2006		
Population	2,020,643	Gunma (Japan)
Foreigners' TB	28	10.1% (3.5%)
Estimated homeless TB among male cases aged 30-59 yrs	2	6.5% (8.9%)

Trends	02	03	04	05	06
Notified cases	344	350	307	296	276
Rate per 100,000	16.9	17.2	15.1	14.6	13.7
Sputum smear pos. pul. cases	116	145	120	119	103
Rate per 100,000	5.7	7.1	5.9	5.9	5.1

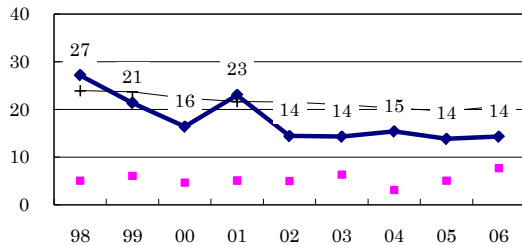
Trends of TB incidence rates



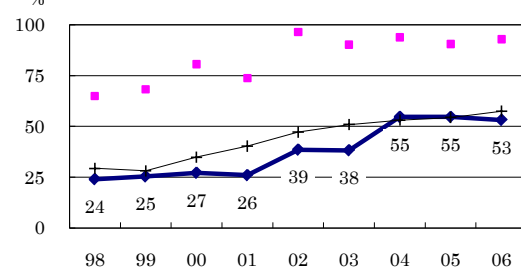
Age-sex composition of notified cases, 2006



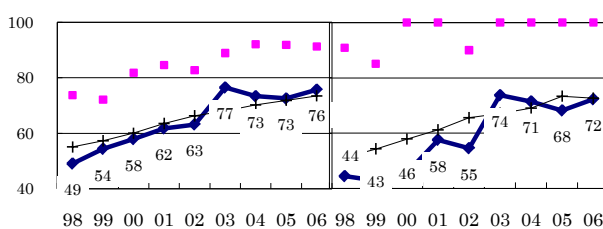
Proportion of cases with long diagnosis delay (>3M) among symptomatic pul. cases



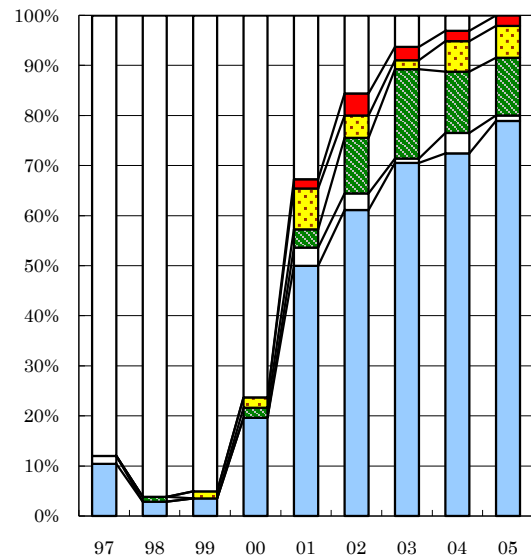
Proportion of positive or negative culture results among pulmonary cases



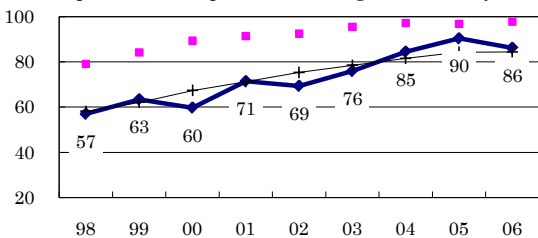
Proportion of bacillary cases among pulmonary cases



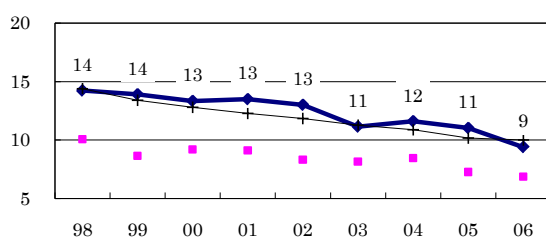
Treatment outcomes of new sputum smear-positive cases, 1997-2005 cohorts



Proportion of treatment with HRZ-E/S among new sputum smear-positive cases aged under 80 yrs



Estimated average treatment duration



Completed Others Died Failed Defaulted Unknown

	n=	125	105	142	97	110	90	112	98	95
Completed		10	3	4	20	50	61	71	72	79
Others		2	0	0	0	4	3	1	4	1
Died		0	1	0	2	4	11	18	12	12
Failed		0	0	1	2	8	4	2	6	6
Defaulted		0	0	0	0	2	4	3	2	2
Unknown		88	96	95	76	33	16	6	3	0