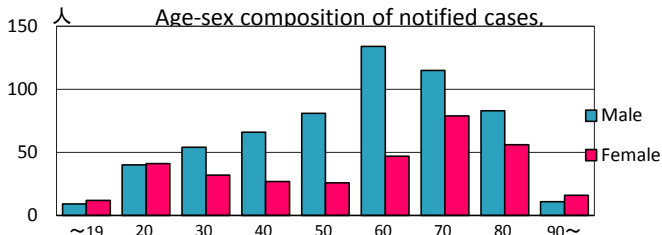
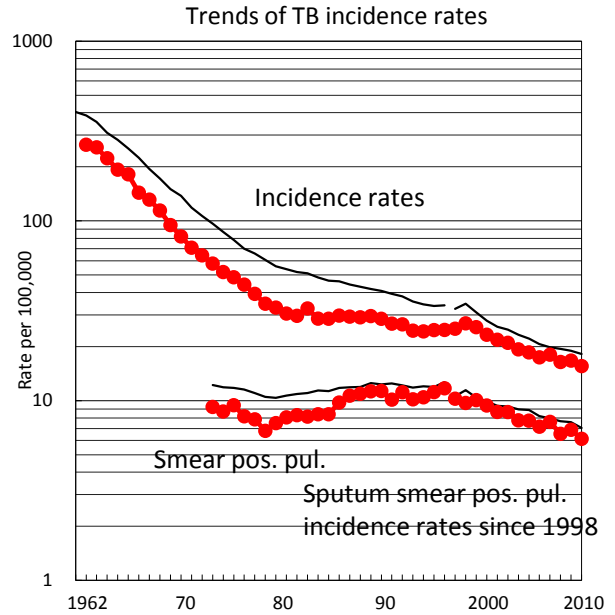
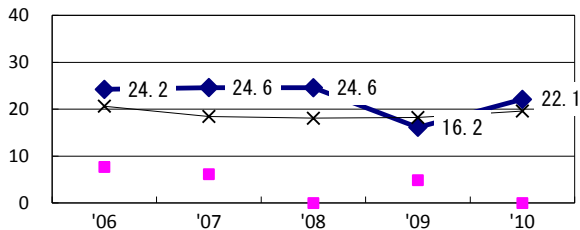


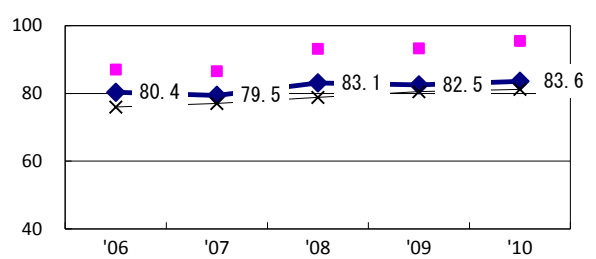
TB statistics in 2010					
Population	5,964,029	(Japan)			
Foreign borns	35	3.8%	(4.1%)		
TB patients with homeless history	17	1.8%	(1.4%)		
Jobless TB patients getting public assistance, proportion among male TB patients aged 35-59 yrs	12	6.0%	(10.8%)		
Trends	'06	'07	'08	'09	'10
Notified cases	1,026	1,062	969	987	929
Rate per 100,000	17.4	18.0	16.4	16.7	15.6
Sputum smear pos. pul. cases	422	449	386	407	366
Rate per 100,000	7.2	7.6	6.5	6.9	6.1



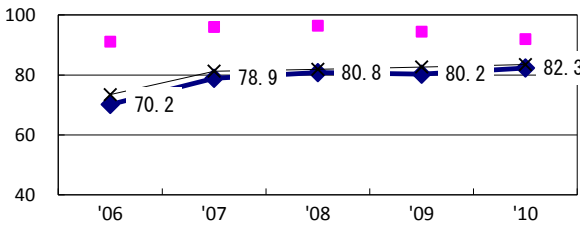
Proportion of cases with long case finding delay (>3M) among symptomatic pul. TB †



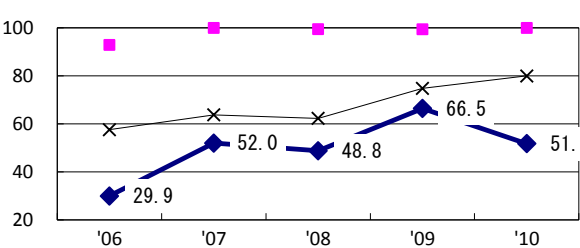
Proportion of Tx with HRZ-E/S among all forms of TB cases aged under 80 yrs*



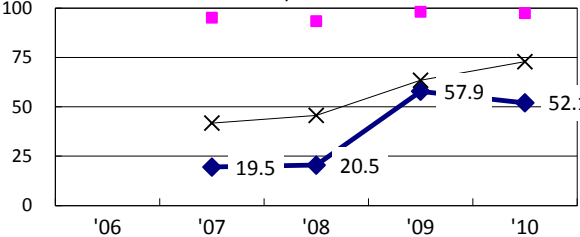
Proportion of bacillary cases among pul. TB



Proportion of culture results obtained among pul. TB

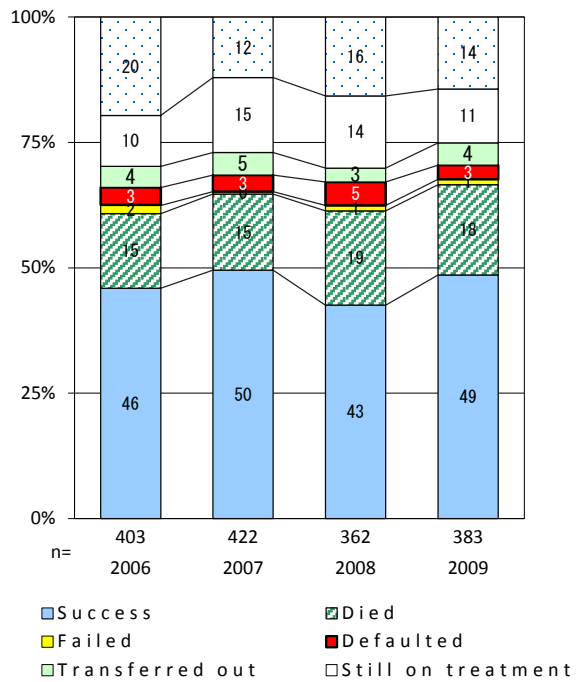


Proportion of DST results obtained among culture pos. pul. TB



◆ Saitama ■ Best prefec./city × Japan

Treatment outcomes of new sputum smear-pos. pul. cases registered in 2006-2009



	'06	'07	'08	'09	'10	Year of registration	'07	'08	'09	Japan
†Excluding unknown delay(%)	44.0	35.6	58.4	46.1	50.2	Median days of treatment (all forms)	274	272	263	(270)
‡Excluding unknown Tx (%)	15.3	5.7	7.8	4.3	5.6	Median days of hospitalization (pul.TB)	57	57	60	(68)