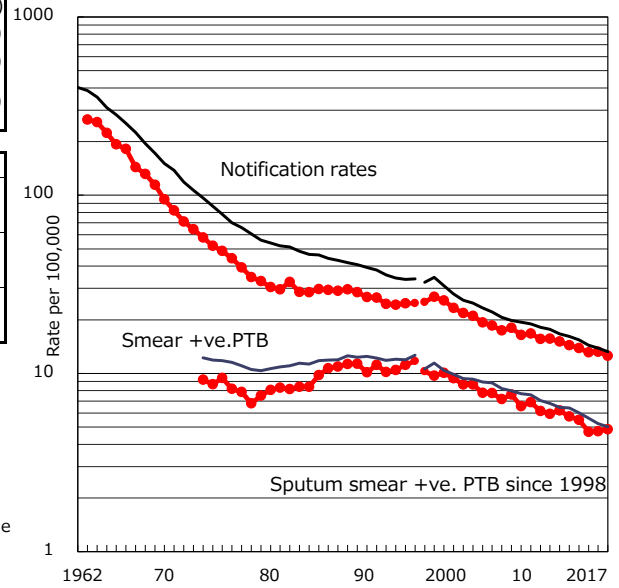


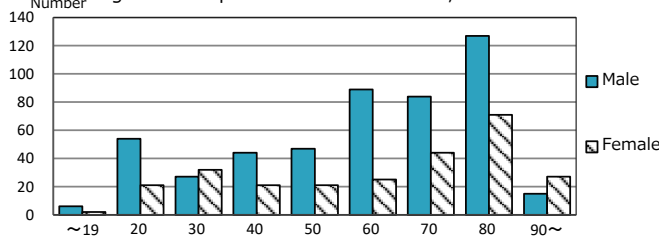
| | |
|---|-----------------|
| TB statistics in 2017 (Population in Saitama 6,019,124) | |
| Among newly notified : (Japan) | |
| Foreign borns | 82 10.8% (9.1%) |
| TB cases with homeless history | 3 0.4% (0.9%) |
| Male aged 35-59,without job and receiving public assistance | 6 5.1% (7.3%) |

| Trends | '13 | '14 | '15 | '16 | 2017 |
|-------------------------------|------|------|------|------|------|
| Notified cases | 860 | 830 | 787 | 797 | 757 |
| Rate per 100,000 population | 14.4 | 13.9 | 13.1 | 13.2 | 12.6 |
| Sputum smear +ve. PTB | 342 | 328 | 282 | 284 | 292 |
| Rate per 100,000 population | 5.7 | 5.5 | 4.7 | 4.7 | 4.9 |
| Latent Tuberculosis Infection | 376 | 413 | 372 | 459 | 453 |
| Rate per 100,000 population | 6.3 | 6.9 | 6.2 | 7.6 | 7.5 |

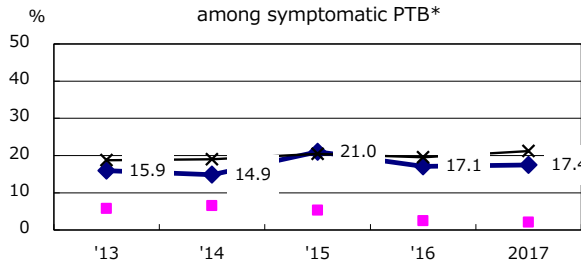
Trends of TB notification rates, all forms and smear +ve.PTB



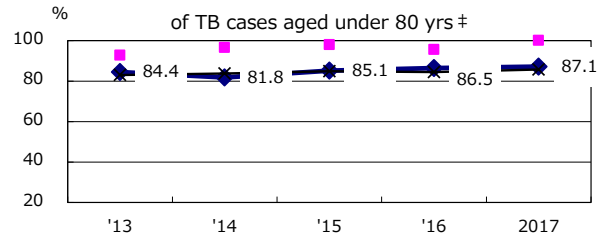
Age-sex composition of notified cases, 2017



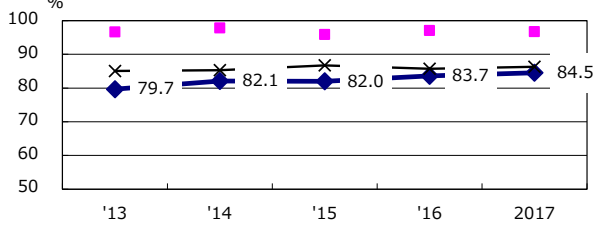
Proportion of cases with total diagnosis delay(> 3 mths) among symptomatic PTB*



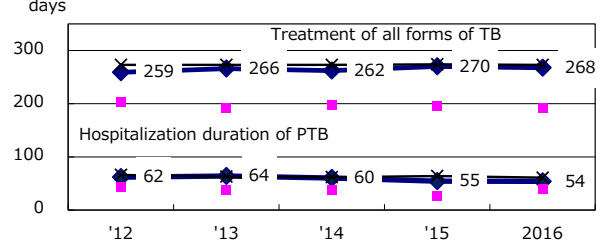
Proportion of TX with HRZ-E/S among all forms of TB cases aged under 80 yrs †



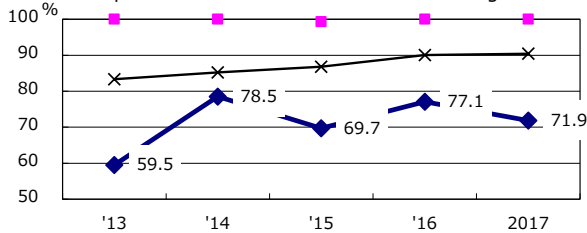
Proportion of Bacteriologically +ve. PTB



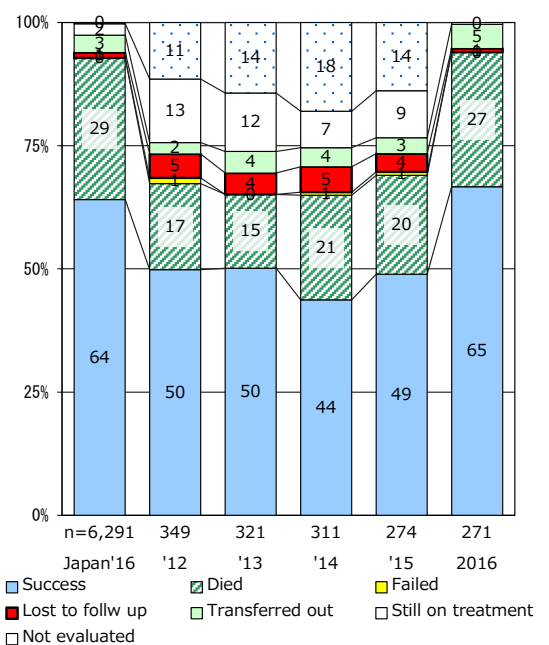
Median duration of treatment of all forms and hospitalization among PTB



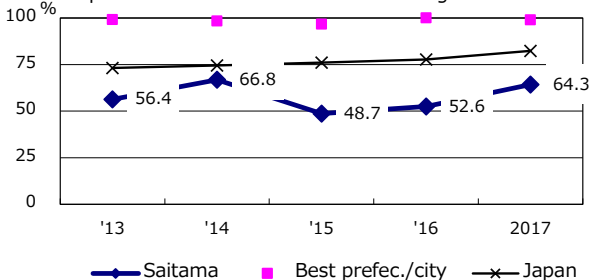
Proportion of culture results obtained among PTB



Treatment outcomes of new sputum smear +ve.TB



Proportion of DST results obtained among culture +ve. PTB



PTB : pulmonary TB

| | | | | | |
|------------------------------|------|------|------|------|------|
| † Excluding unknown delay(%) | '13 | '14 | '15 | '16 | 2017 |
| | 54.4 | 60.9 | 70.7 | 70.1 | 69.1 |

| | | | | | |
|---------------------------|-----|-----|-----|-----|------|
| ‡ Excluding unknown Tx(%) | '13 | '14 | '15 | '16 | 2017 |
| | 6.0 | 1.4 | 4.3 | 2.1 | 8.3 |