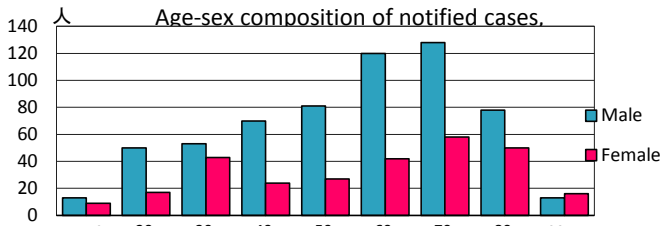
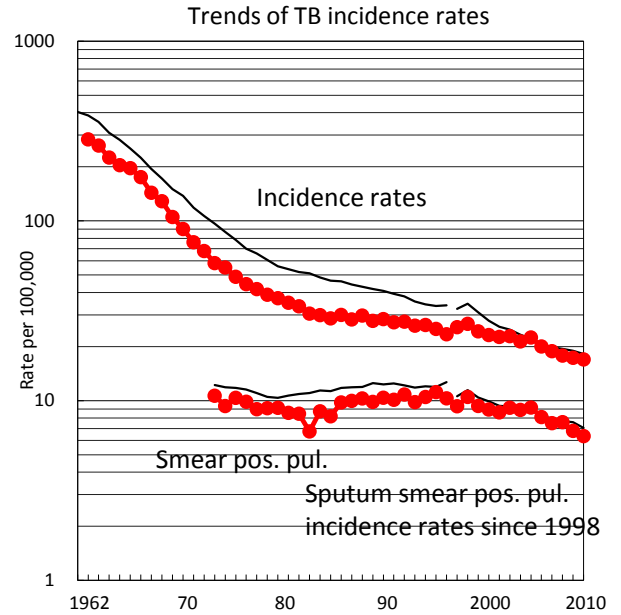
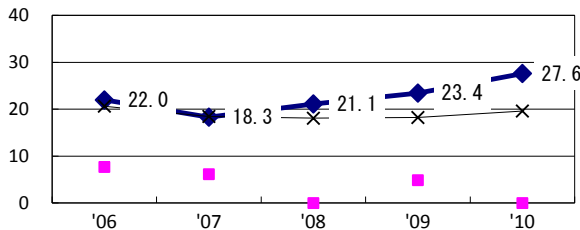


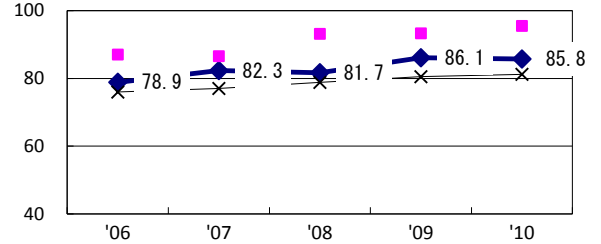
TB statistics in 2010					
Population	5,258,662			(Japan)	
Foreign borns	47	5.3%		(4.1%)	
TB patients with homeless history	22	2.5%		(1.4%)	
Jobless TB patients getting public assistance, proportion among male TB patients aged 35-59 yrs	13	6.4%		(10.8%)	
Trends	'06	'07	'08	'09	'10
Notified cases	1,030	973	922	898	892
Rate per 100,000	20.0	18.9	17.8	17.3	17.0
Sputum smear pos. pul. cases	417	387	393	352	334
Rate per 100,000	8.1	7.5	7.6	6.8	6.4



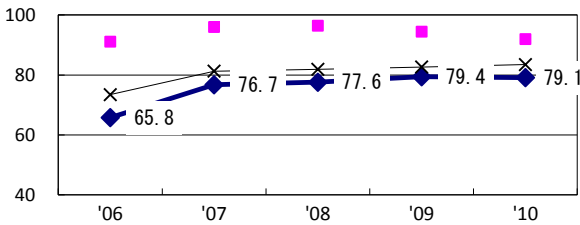
Proportion of cases with long case finding delay (>3M) among symptomatic pul. TB †



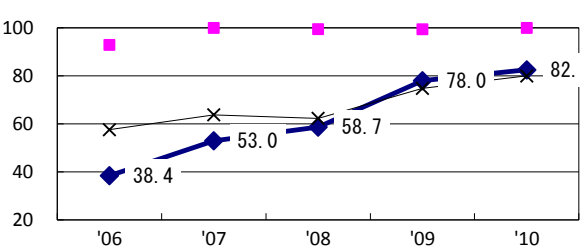
Proportion of Tx with HRZ-E/S among all forms of TB cases aged under 80 yrs*



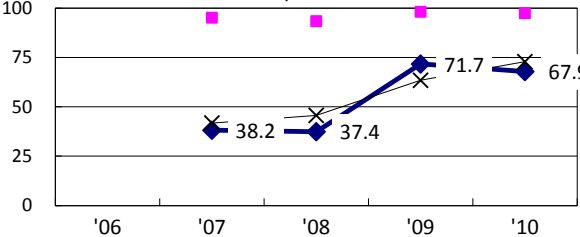
Proportion of bacillary cases among pul. TB



Proportion of culture results obtained among pul. TB

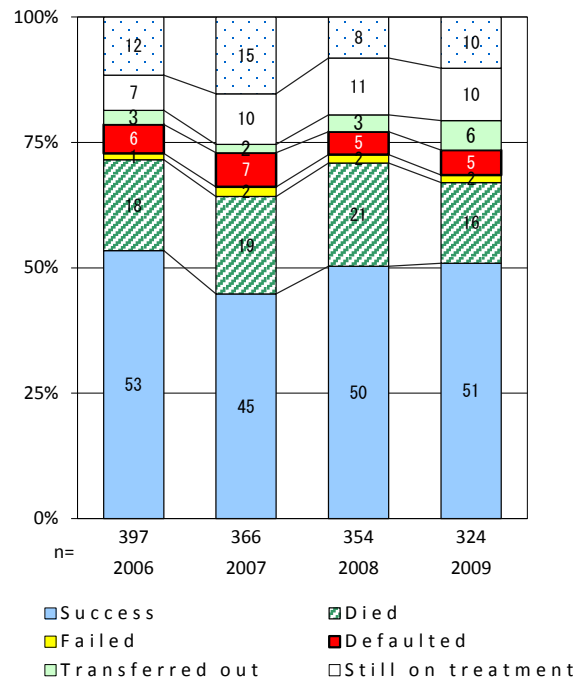


Proportion of DST results obtained among culture pos. pul. TB



◆ Chiba ■ Best prefec./city × Japan

Treatment outcomes of new sputum smear-pos. pul. cases registered in 2006-2009



	'06	'07	'08	'09	'10	Year of registration	'07	'08	'09	Japan
†Excluding unknown delay(%)	10.6	37.9	54.7	59.7	53.1	Median days of treatment (all forms)	236	246	212	(270)
‡Excluding unknown Tx (%)	5.2	3.0	3.5	1.4	2.6	Median days of hospitalization (pul.TB)	59	60	64	(68)