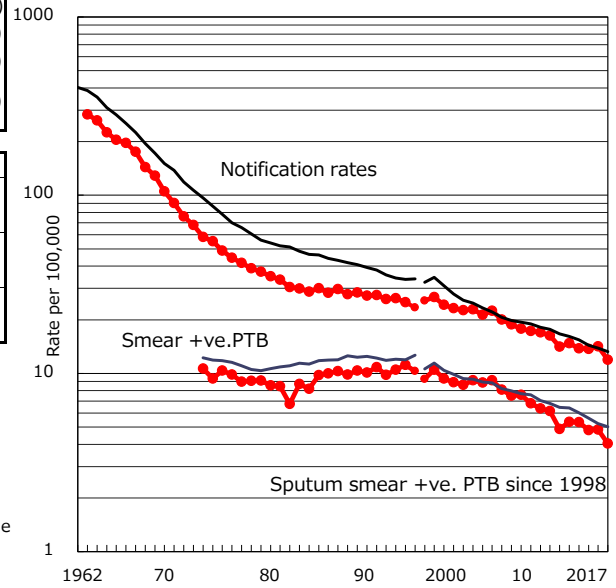


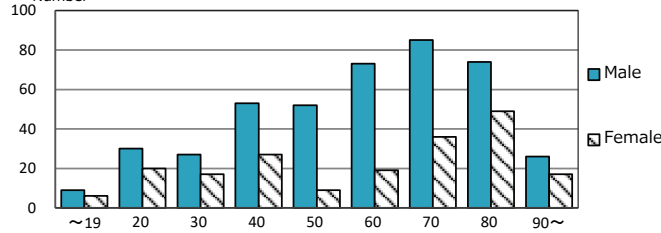
TB statistics in 2017 (Population in Chiba		5,270,473)
Among newly notified :		(Japan)
Foreign borns	54	8.6% (9.1%)
TB cases with homeless history	3	0.5% (0.9%)
Male aged 35-59, without job and receiving public assistance	6	4.5% (7.3%)

Trends	'13	'14	'15	'16	2017
Notified cases	772	722	721	748	629
Rate per 100,000 population	14.8	13.8	13.7	14.2	11.9
Sputum smear +ve. PTB	279	279	252	255	213
Rate per 100,000 population	5.3	5.3	4.8	4.8	4.0
Latent Tuberculosis Infection	277	354	276	426	370
Rate per 100,000 population	5.3	6.8	5.3	8.1	7.0

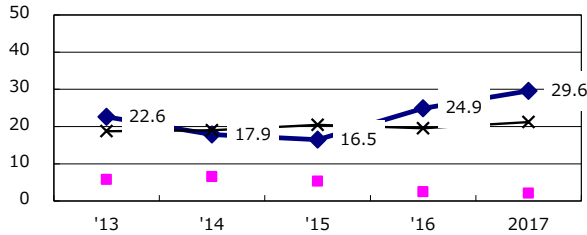
Trends of TB notification rates, all forms and smear +ve.PTB



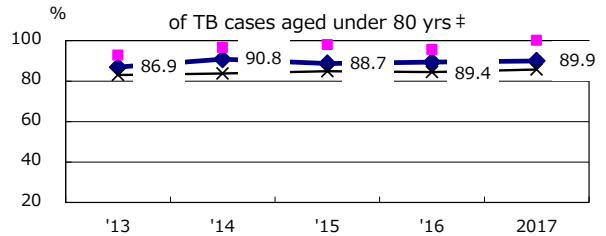
Age-sex composition of notified cases, 2017



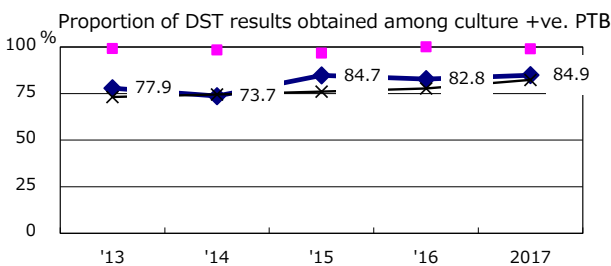
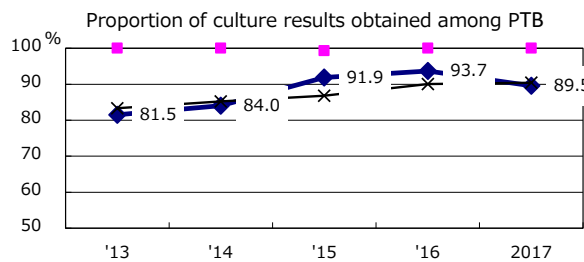
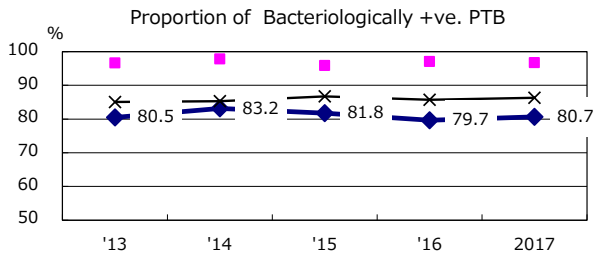
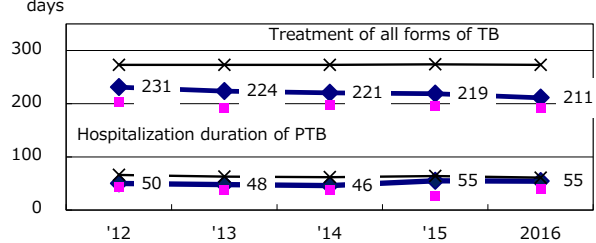
Proportion of cases with total diagnosis delay(> 3 mths) among symptomatic PTB*



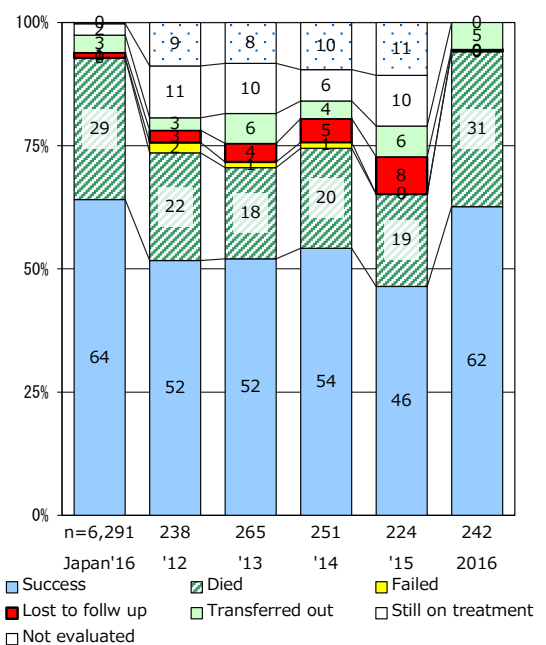
Proportion of TX with HRZ-E/S among all forms



Median duration of treatment of all forms and hospitalization among PTB



Treatment outcomes of new sputum smear +ve.TB



PTB : pulmonary TB

† Excluding unknown delay(%)	'13	'14	'15	'16	2017
	35.3	40.4	34.8	27.2	34.4

‡ Excluding unknown Tx(%)	'13	'14	'15	'16	2017
	2.4	3.0	1.7	1.6	1.9