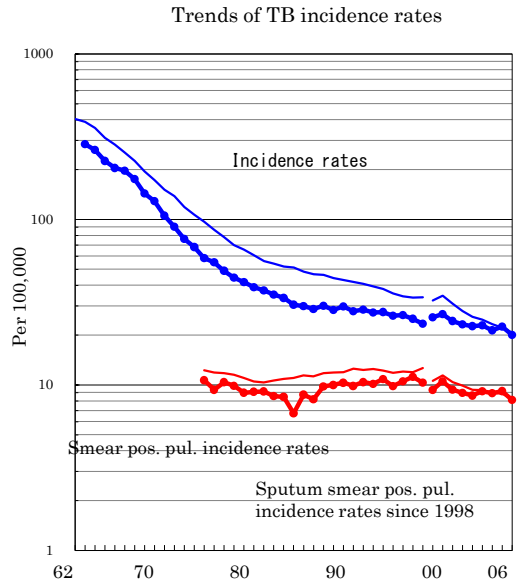
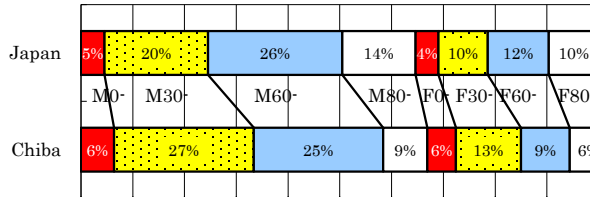


Chiba

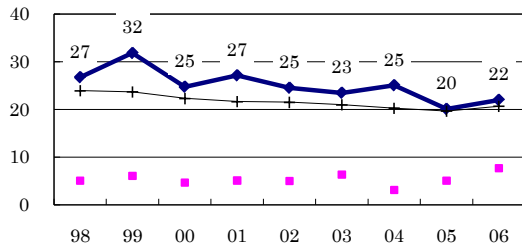
TB statistics in 2006		
Population	5,143,251	Chiba (Japan)
Foreigners' TB	32	3.1% (3.5%)
Estimated homeless TB among male cases aged 30-59 yrs	15	5.4% (8.9%)

Trends	02	03	04	05	06
Notified cases	1,152	1,168	1,094	1,153	1,030
Rate per 100,000	22.6	22.9	21.4	22.5	20.0
Sputum smear pos. pul. cases	438	467	455	470	417
Rate per 100,000	8.6	9.1	8.9	9.2	8.1

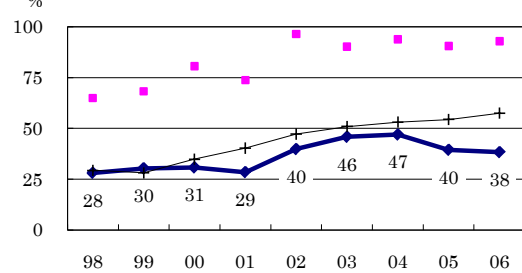
Age-sex composition of notified cases, 2006



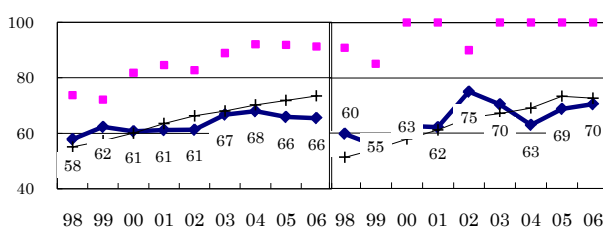
Proportion of cases with long diagnosis delay (>3M) among symptomatic pul. cases



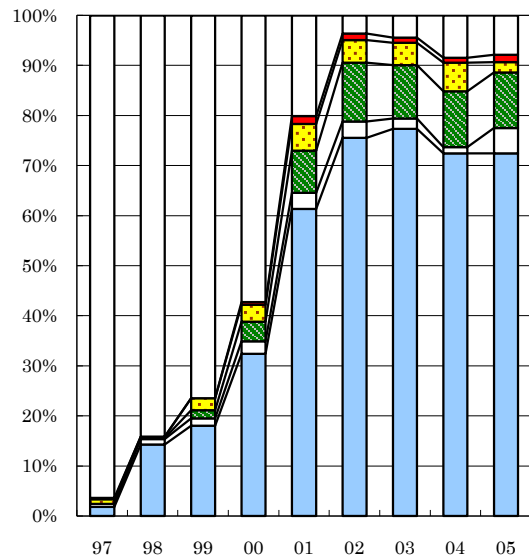
Proportion of positive or negative culture results among pulmonary cases



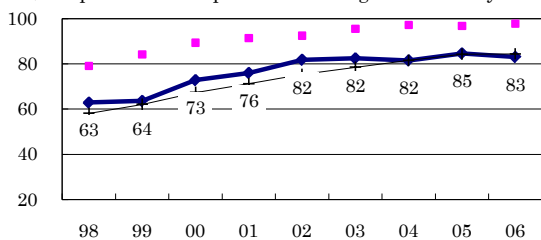
Proportion of bacillary cases among pulmonary cases



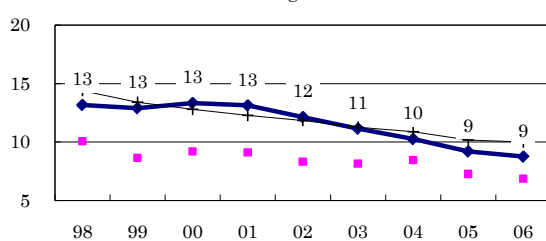
Treatment outcomes of new sputum smear-positive cases, 1997-2005 cohorts



Proportion of treatment with HRZ-E/S among new sputum smear-positive cases aged under 80 yrs



Estimated average treatment duration



Completed Others Died Failed Defaulted Unknown

	n=	332	378	421	358	378	307	384	403	396
Completed	2	14	18	32	61	76	77	72	72	72
Others	1	1	1	3	3	3	2	1	1	5
Died	0	0	2	4	8	12	11	11	11	11
Failed	1	0	2	3	5	5	4	6	2	2
Defaulted	0	0	0	1	2	1	1	1	1	2
Unknown	96	84	76	57	20	4	4	8	8	8