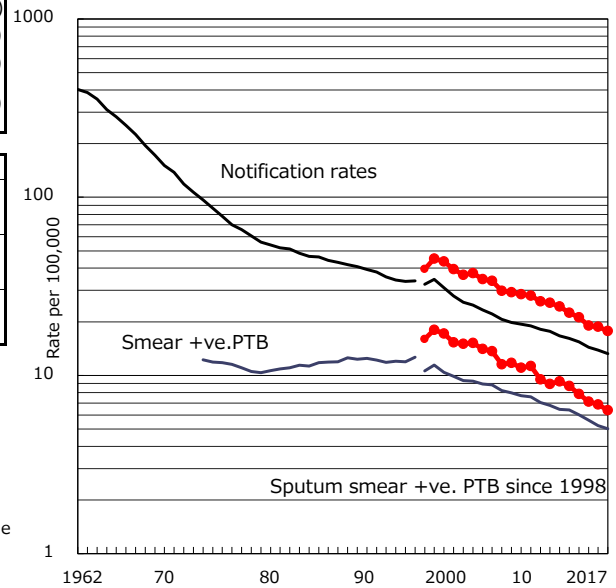


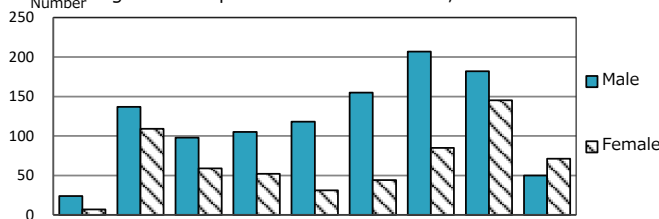
TB statistics in 2017 ( Population in Tokyo 23 ku 9,446,571 )	
Among newly notified : (Japan)	
Foreign borns	286 17.0% (9.1%)
TB cases with homeless history	44 2.6% (0.9%)
Male aged 35-59, without job and receiving public assistance	29 9.0% (7.3%)

Trends	'13	'14	'15	'16	2017
Notified cases	2,034	1,937	1,761	1,774	1,679
Rate per 100,000 population	22.5	21.2	19.1	18.8	17.8
Sputum smear +ve. PTB	791	719	658	643	603
Rate per 100,000 population	8.7	7.9	7.1	6.8	6.4
Latent Tuberculosis Infection	666	766	674	793	672
Rate per 100,000 population	7.4	8.4	7.3	8.4	7.1

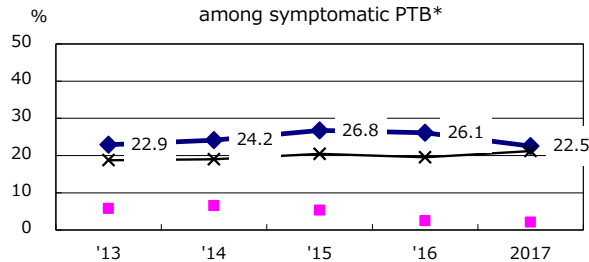
Trends of TB notification rates, all forms and smear +ve.PTB



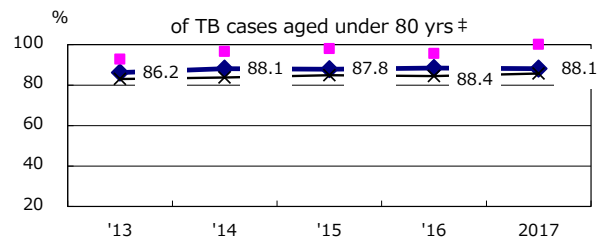
Age-sex composition of notified cases, 2017



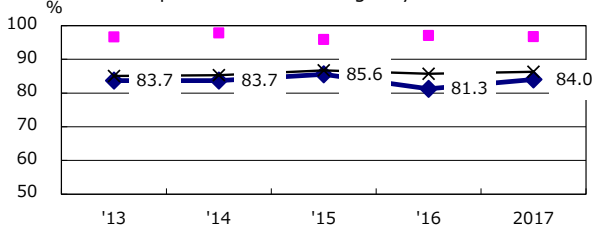
Proportion of cases with total diagnosis delay (> 3 mths) among symptomatic PTB\*



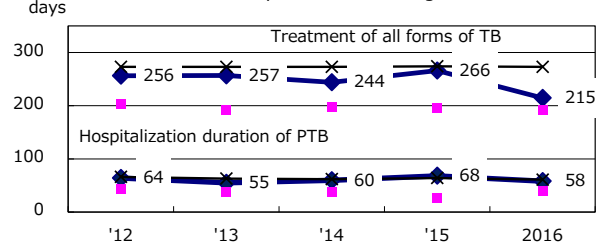
Proportion of TX with HRZ-E/S among all forms



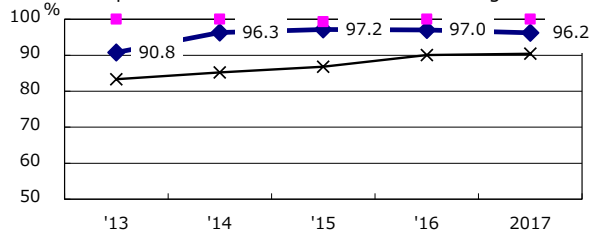
Proportion of Bacteriologically +ve. PTB



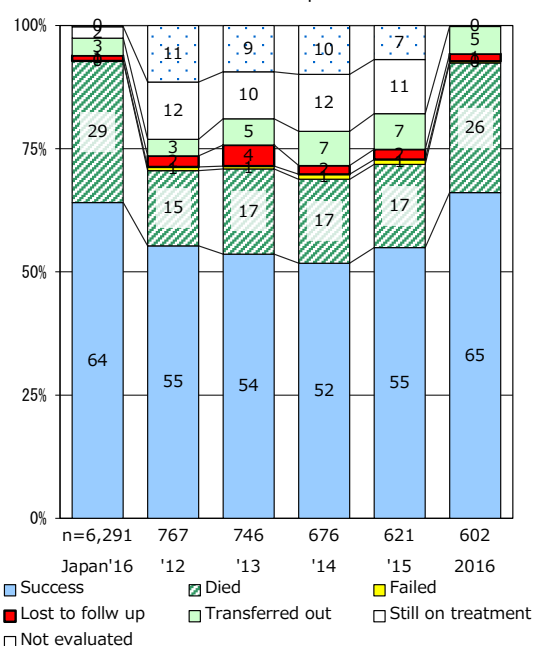
Median duration of treatment of all forms and hospitalization among PTB



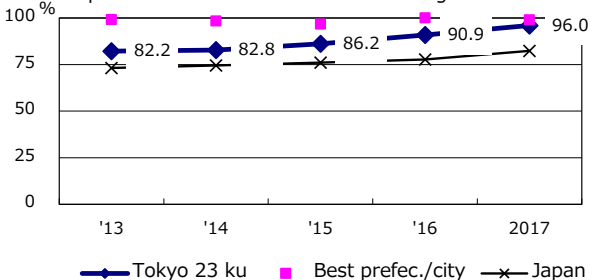
Proportion of culture results obtained among PTB



Treatment outcomes of new sputum smear +ve.TB



Proportion of DST results obtained among culture +ve. PTB



PTB : pulmonary TB

† Excluding unknown delay(%)	'13	'14	'15	'16	2017
	43.7	51.1	35.4	46.3	43.0

‡ Excluding unknown Tx(%)	'13	'14	'15	'16	2017
	2.8	3.1	3.7	3.0	3.3