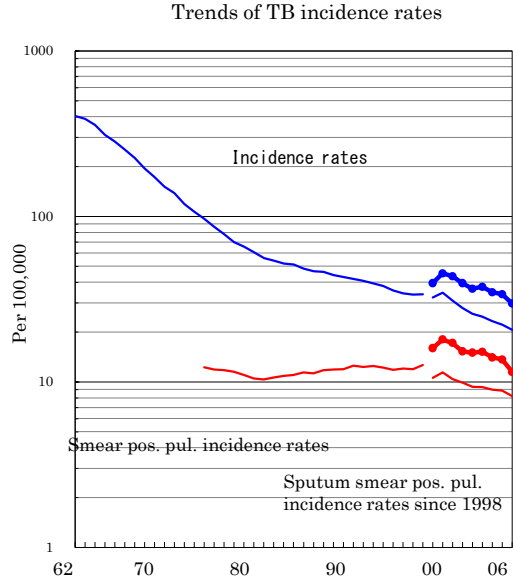
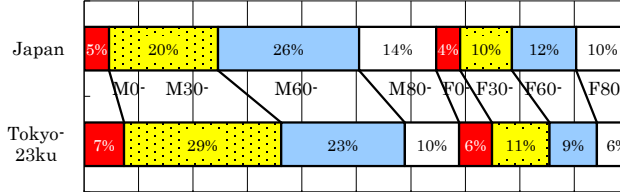


# Tokyo-23ku (The part of Tokyo)

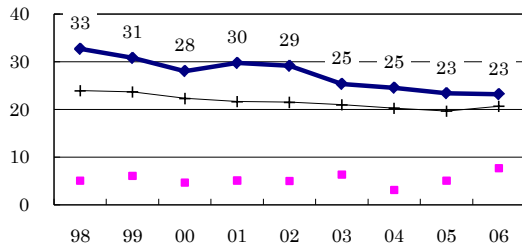
TB statistics in 2006		
Population	8,535,792	Tokyo-23ku (Japan)
Foreigners' TB	156	6.1% (3.5%)
Estimated homeless TB among male cases aged 30-59 yrs	105	14.3% (8.9%)

Trends	02	03	04	05	06
Notified cases	3,032	3,129	2,915	2,874	2,542
Rate per 100,000	36.6	37.5	34.7	33.9	29.8
Sputum smear pos. pul. cases	1,245	1,268	1,180	1,159	983
Rate per 100,000	15.0	15.2	14.1	13.7	11.5

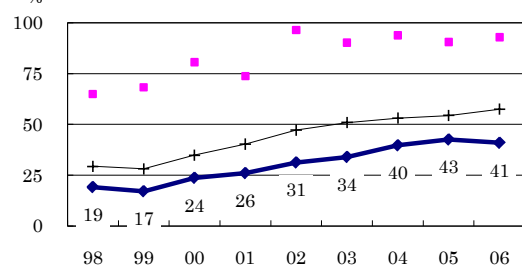
Age-sex composition of notified cases, 2006



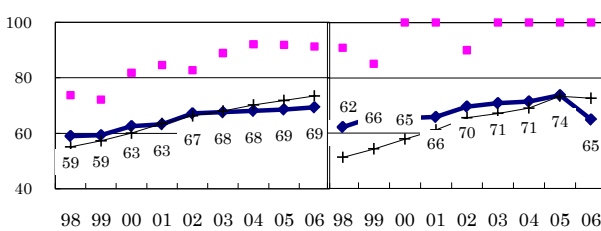
Proportion of cases with long diagnosis delay (>3M) among symptomatic pul. cases



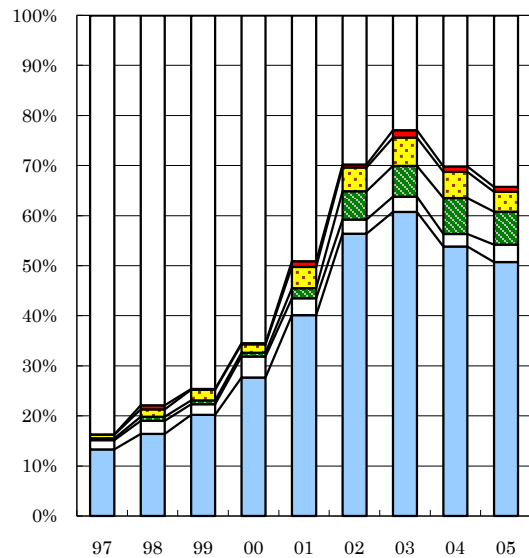
Proportion of positive or negative culture results among pulmonary cases



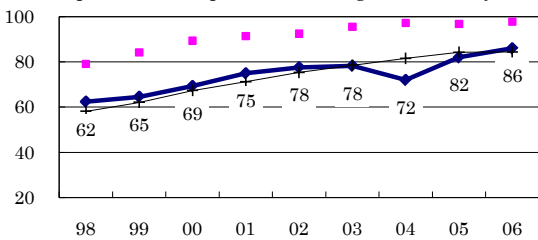
Proportion of bacillary cases among pulmonary cases



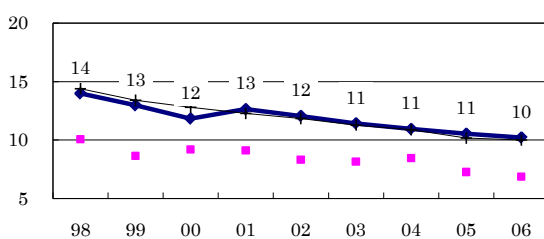
Treatment outcomes of new sputum smear-positive cases, 1997-2005 cohorts



Proportion of treatment with HRZ-E/S among new sputum smear-positive cases aged under 80 yrs



Estimated average treatment duration



—●— Tokyo-23ku    —■— Best prefecture/city    —+— Japan

	n = 1,135	1,005	1,004	904	798	846	815	806	806
Completed	13	16	20	28	40	56	61	54	51
Others	2	3	2	4	3	3	3	2	3
Died	0	1	1	1	2	6	6	7	7
Failed	1	1	2	2	4	5	6	5	4
Defaulted	0	1	0	0	1	1	1	1	1
Unknown	84	78	75	65	49	30	23	30	34