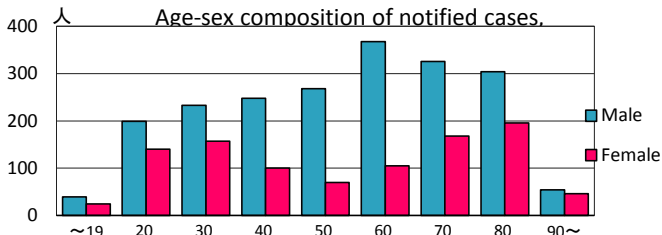
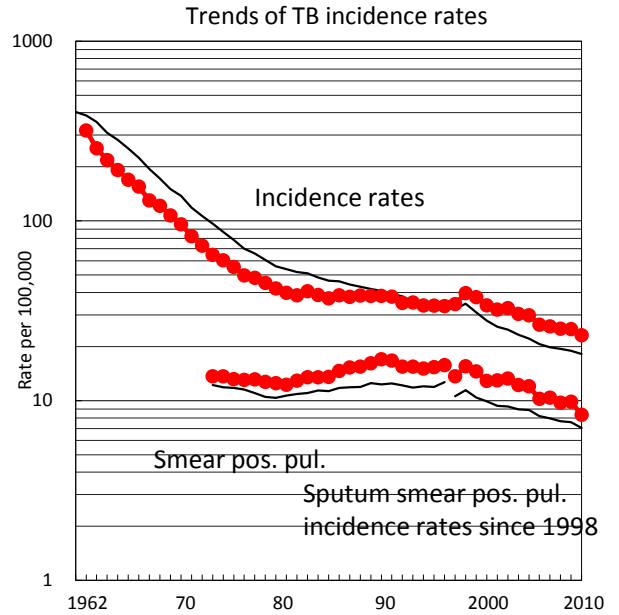
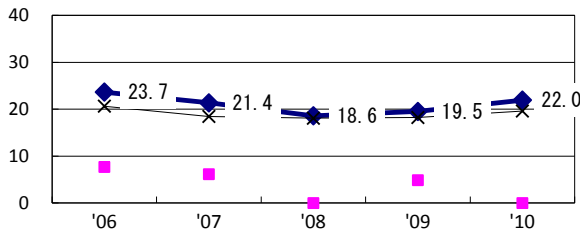


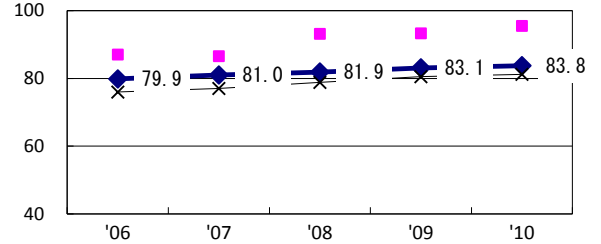
TB statistics in 2010					
Population	13,161,751			(Japan)	
Foreign borns	211	6.9%	(4.1%)		
TB patients with homeless history	150	4.9%	(1.4%)		
Jobless TB patients getting public assistance, proportion among male TB patients aged 35-59 yrs	103	13.8%	(10.8%)		
Trends	'06	'07	'08	'09	'10
Notified cases	3,351	3,305	3,228	3,219	3,045
Rate per 100,000	26.5	25.9	25.1	25.0	23.1
Sputum smear pos. pul. cases	1,297	1,326	1,251	1,270	1,099
Rate per 100,000	10.2	10.4	9.7	9.9	8.3



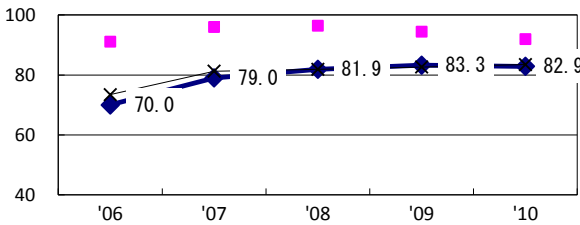
Proportion of cases with long case finding delay (>3M) among symptomatic pul. TB †



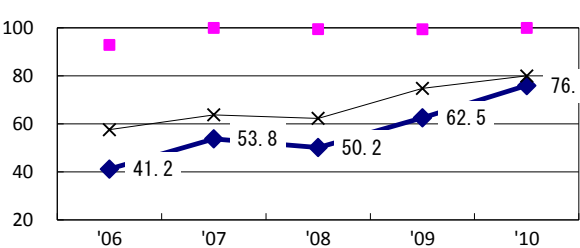
Proportion of Tx with HRZ-E/S among all forms of TB cases aged under 80 yrs\*



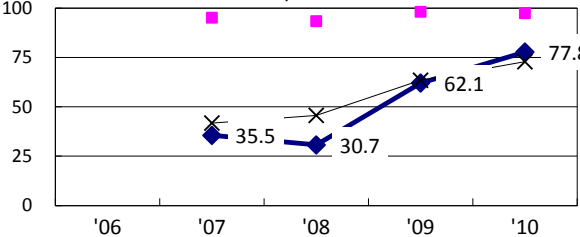
Proportion of bacillary cases among pul. TB



Proportion of culture results obtained among pul. TB

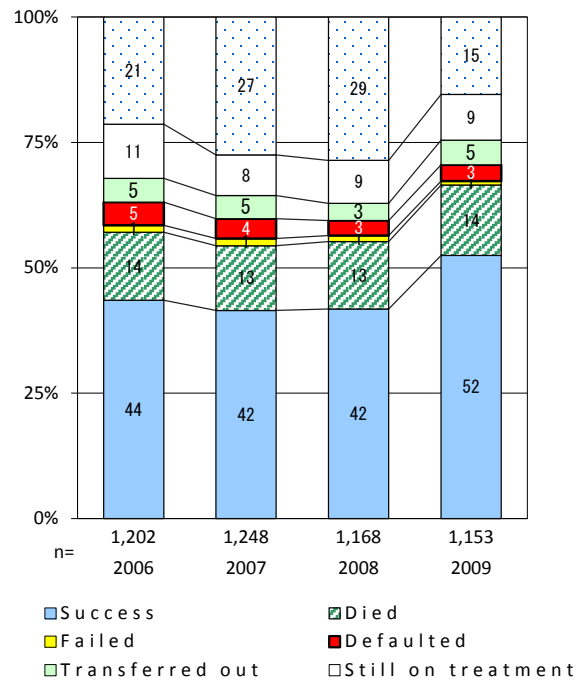


Proportion of DST results obtained among culture pos. pul. TB



◆ Tokyo    ■ Best prefec./city    × Japan

Treatment outcomes of new sputum smear-pos. pul. cases registered in 2006-2009



	'06	'07	'08	'09	'10	Year of registration	'07	'08	'09	Japan
†Excluding unknown delay(%)	19.2	41.6	57.0	64.1	43.3	Median days of treatment (all forms)	267	263	253	(270)
‡Excluding unknown Tx (%)	19.4	14.3	16.2	15.9	4.4	Median days of hospitalization (pul.TB)	65	68	68	(68)