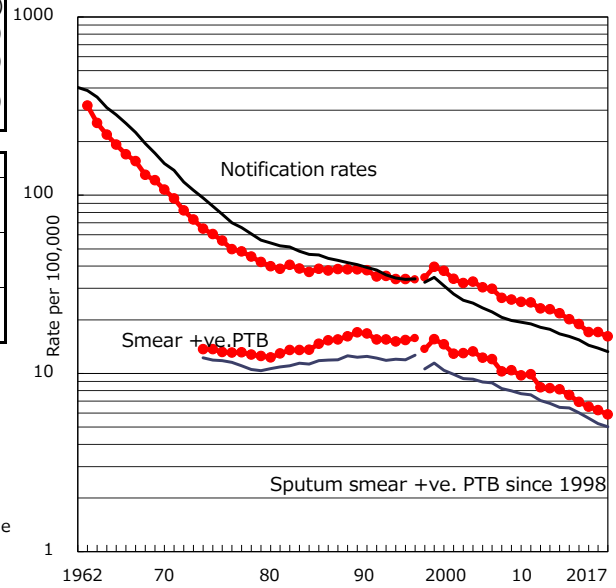


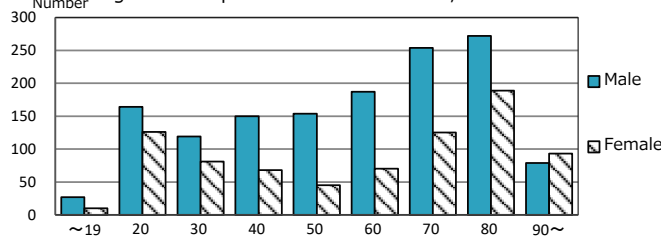
TB statistics in 2017 ( Population in Tokyo 13,723,799 )	
Among newly notified : (Japan)	
Foreign borns	341 15.4% (9.1%)
TB cases with homeless history	48 2.2% (0.9%)
Male aged 35-59, without job and receiving public assistance	34 8.0% (7.3%)

Trends	'13	'14	'15	'16	2017
Notified cases	2,671	2,533	2,306	2,340	2,213
Rate per 100,000 population	20.1	18.9	17.1	17.1	16.1
Sputum smear +ve. PTB	1,006	927	877	848	807
Rate per 100,000 population	7.6	6.9	6.5	6.2	5.9
Latent Tuberculosis Infection	987	1,060	920	1,020	948
Rate per 100,000 population	7.4	7.9	6.8	7.4	6.9

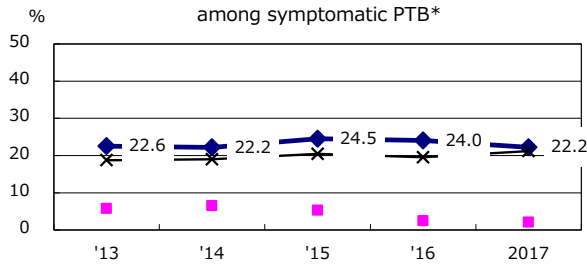
Trends of TB notification rates, all forms and smear +ve.PTB



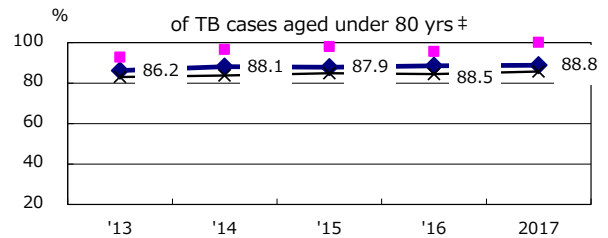
Age-sex composition of notified cases, 2017



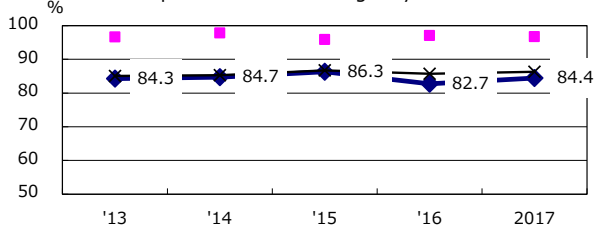
Proportion of cases with total diagnosis delay(> 3 mths) among symptomatic PTB\*



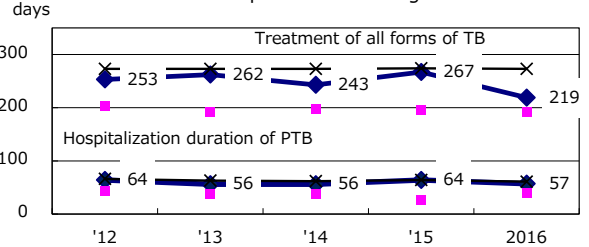
Proportion of TX with HRZ-E/S among all forms



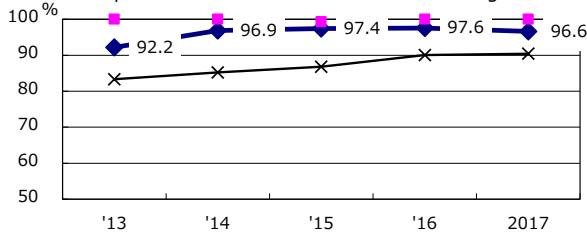
Proportion of Bacteriologically +ve. PTB



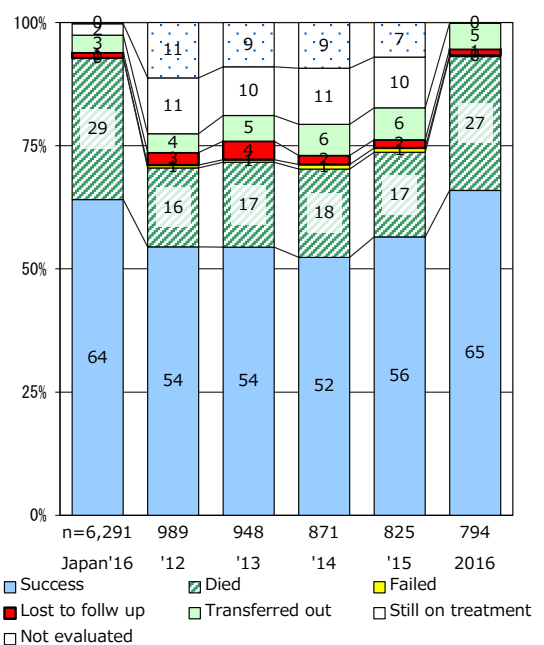
Median duration of treatment of all forms and hospitalization among PTB



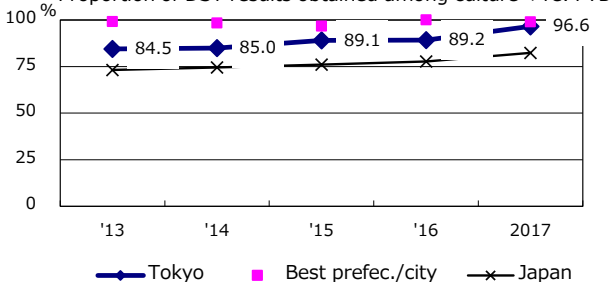
Proportion of culture results obtained among PTB



Treatment outcomes of new sputum smear +ve.TB



Proportion of DST results obtained among culture +ve. PTB



PTB : pulmonary TB

† Excluding unknown delay(%)	'13	'14	'15	'16	2017
	38.5	43.4	28.9	35.7	35.1

‡ Excluding unknown Tx(%)	'13	'14	'15	'16	2017
	2.9	3.0	3.0	2.6	2.8