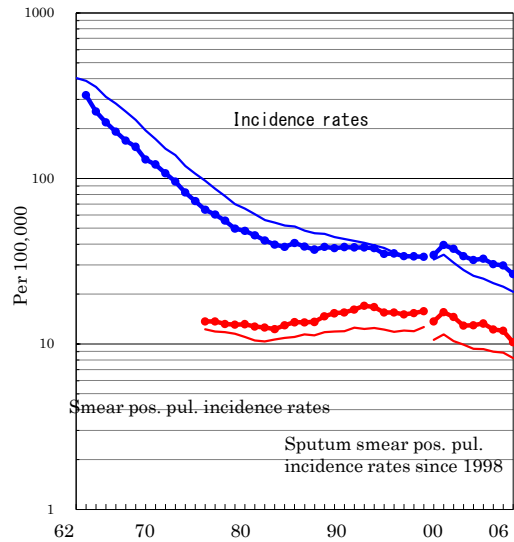


Tokyo

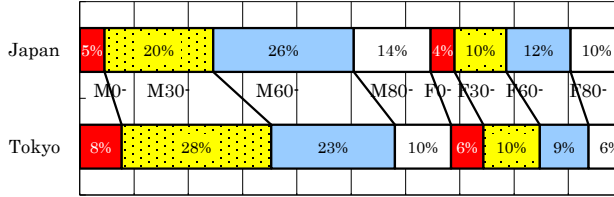
TB statistics in 2006		
Population	12,659,172	Tokyo (Japan)
Foreigners' TB	179	5.3% (3.5%)
Estimated homeless TB among male cases aged 30-59 yrs	118	12.8% (8.9%)

Trends	02	03	04	05	06
Notified cases	3,926	4,029	3,764	3,753	3,351
Rate per 100,000	32.1	32.7	30.4	29.9	26.5
Sputum smear pos. pul. cases	1,585	1,635	1,513	1,513	1,297
Rate per 100,000	13.0	13.3	12.2	12.0	10.2

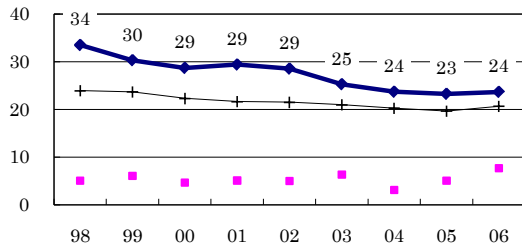
Trends of TB incidence rates



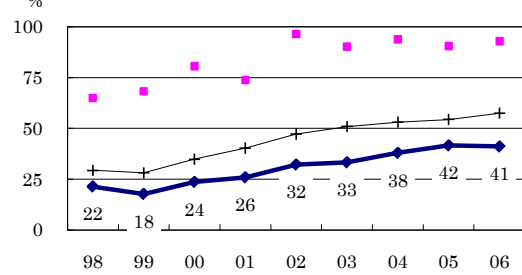
Age-sex composition of notified cases, 2006



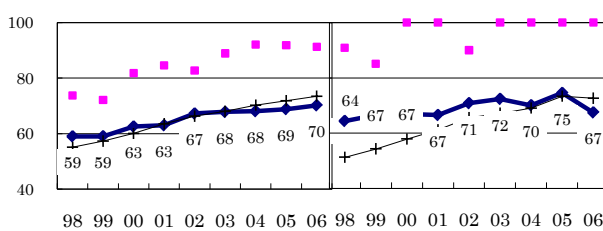
Proportion of cases with long diagnosis delay (>3M) among symptomatic pul. cases



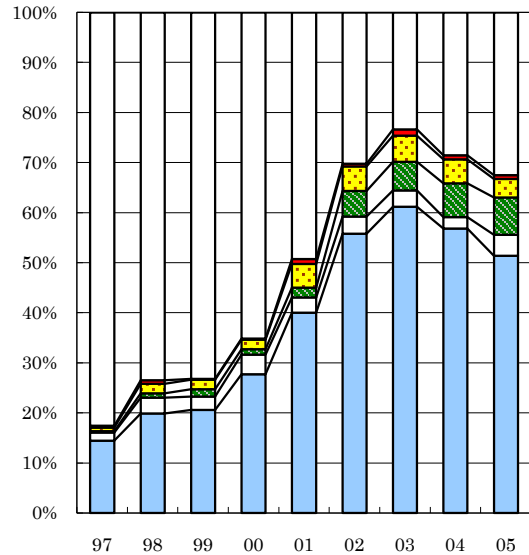
Proportion of positive or negative culture results among pulmonary cases



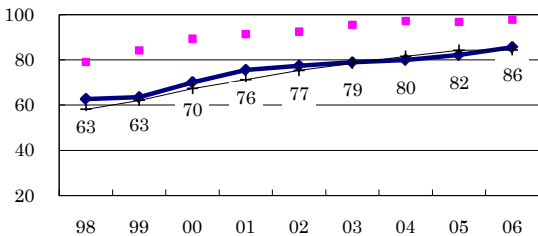
Proportion of bacillary cases among pulmonary cases



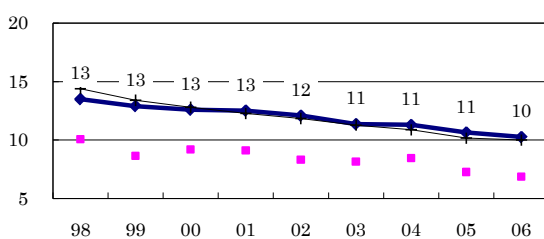
Treatment outcomes of new sputum smear-positive cases, 1997-2005 cohorts



Proportion of treatment with HRZ-E/S among new sputum smear-positive cases aged under 80 yrs



Estimated average treatment duration



	97	98	99	00	01	02	03	04	05
Completed	14	20	21	28	40	56	61	57	51
Others	2	3	3	4	3	3	3	2	4
Died	0	1	1	1	2	5	6	7	7
Failed	1	2	2	2	5	5	5	5	4
Defaulted	0	1	0	0	1	1	1	1	1
Unknown	83	74	73	65	49	30	23	29	33

—●— Tokyo —■— Best prefecture/city —+— Japan